

The very finest in Archery



3261 Flushing Rd. Flint 4, Mich.

DARTON, Inc.
ARCHERY DIVISION



DARTON Thunderbird



The Most Exclusive Bow Made
(a limited production bow)

Specifications

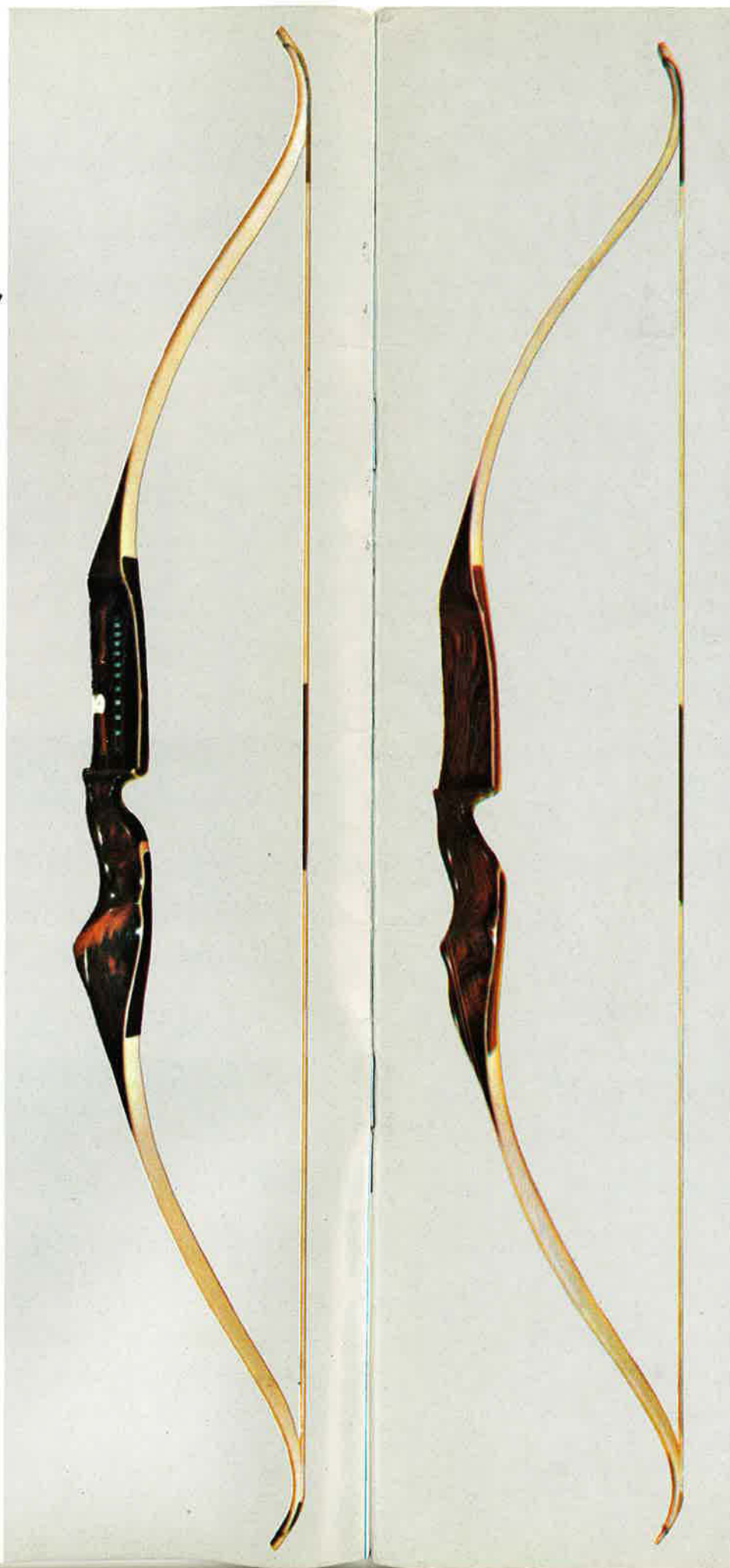
Length — 68", 70" Ladies — 66"
Weighed at — 28" Ladies — 26"

Available Draw Weight — up to 50#

Material — Brazilian rosewood handle;
limbs faced and backed with
white epoxy glass fibre.

Features — Built-in sight, checkering on
grip, form-fitting thumb rest,
and a beautiful leather case
customized for this bow.

Price \$200.00
Available right or left hand. Please specify.



DARTON Electra



The Perfect Tournament Bow

Specifications

Length — 66", 68" Ladies — 64"
Weighed at — 28" Ladies — 26"

Available Draw Weight — up to 50#

Material — Brazilian rosewood handle,
limbs faced and backed with
white epoxy glass fibre.

Features — Flat surface for hand with
checkering, precision balance.

Price \$115.00
Available right or left hand. Please specify.





DARTON
Dynamic



A target bow with a delicate touch — yet solid accuracy

Length — 68" Ladies — 64"

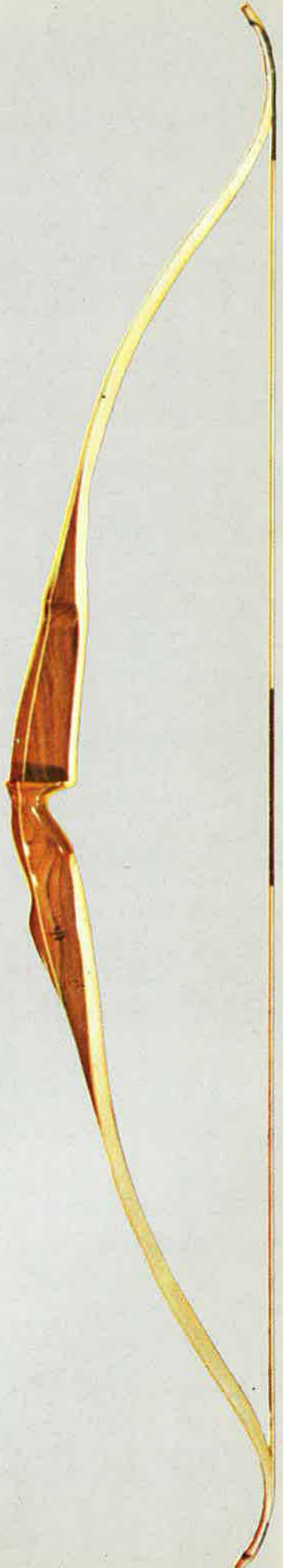
Weighed at — 28" Ladies — 26"

Available Draw Weight — up to 50#

Material — Bubinga wood handle, limbs faced and backed with white epoxy glass fibre.

Features — Full, flat comfortable grip. The 64" is the ideal ladies bow.

Price \$79.95
 Available right or left hand. Please specify.



DARTON
Fury



A True Hunting Bow

Length — 56", 60"

Weighed at — 28"*

Available Draw Weight — up to 60#

Material — Bubinga wood, limbs faced and backed with hunter brown epoxy glass fibre.

Features — This bow is designed for shooting heavier hunting arrows. It has a full, flat grip and is short in length for ease in handling in the bush.

Price \$59.95
 Available right or left hand. Please specify.

*The 56" bow has a recommended maximum draw of 29", the 60" a maximum of 31".






Classic



The Pace-Setter for Hunting and Tournament Shooters

Length — 58", 62", 66"

Weighed at — 28"*

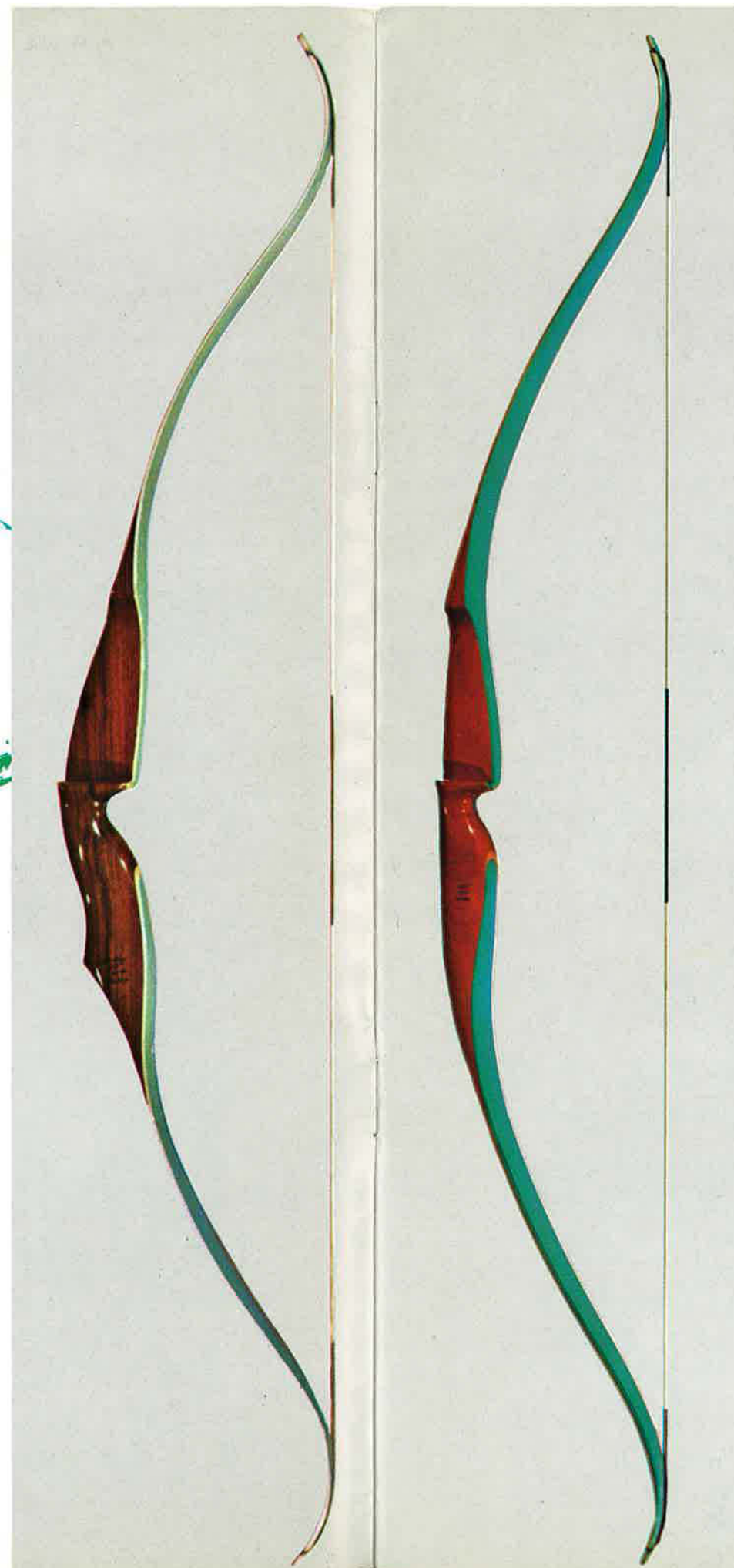
Available Draw Weight — up to 60#

Material — Walnut wood handle, limbs faced with light green and backed with white epoxy glass fibre.

Features — A full, flat grip for good hand position. This bow is accurate for game and field events.

Price \$44.95
Available right or left hand. Please specify.

*The 58" bow has a recommended maximum draw of 29", the 62" bow at a 30" draw, and the 66" bow at a 31" draw.





Valiant



A combination target and field bow

Length — 64"

Weighed at — 28"

Available Draw Weight — up to 50#

Material — Cherrywood handle, limbs faced and backed with light green epoxy glass fibre.

Features — A full grip with thumb rest and a 7" sight window.

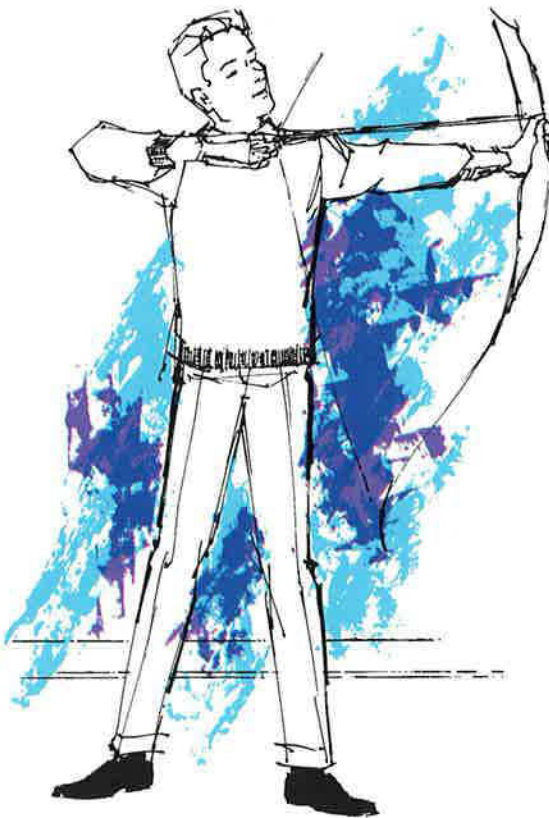
Price \$34.95
Available right or left hand. Please specify.



64"
 29"
 1P208



DARTON
Clipper



A Bow That Features Economy and Quality for Archers

Length — 62"

Weighed at — 28"

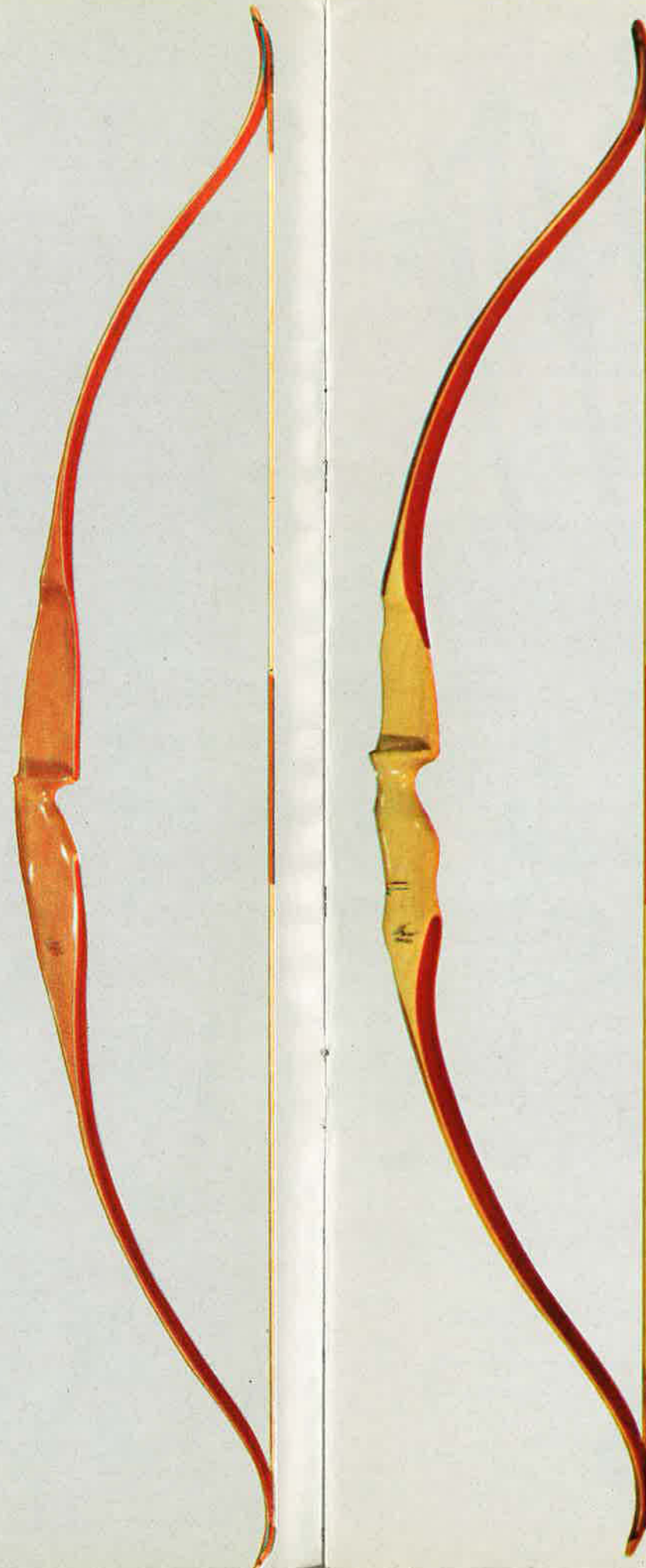
Available Draw Weight — up to 45#

Material — Cherry wood handle, limbs faced and backed with epoxy glass fibre.

Features — A full sized bow with standard grip and large sight window that assures the accuracy and feel of a higher priced bow.

Price \$24.95

Available right or left hand. Please specify.




DARTON
Dart



Designed for those Archers with a short draw

Length — 50"

Weighed at — 24" maximum, recommended draw 26"

Available Draw Weight — 15# to 30# at 24" draw

Material — Maple wood handle, faced and backed with epoxy glass fibre.

Features — This bow is a scaled down model of the full draw bows. Ideal for those with a short draw and young people.

Price \$19.95

Specify right or left.

Available right or left hand. Please specify.

All Darton bows are designed for peak performance at the suggested draw length. Performance will vary beyond the draw length recommended.



Arrows



Ideal for amateurs, enthusiasts
and the professional.

PRACTICE TARGET ARROWS FOR THE NEW ARCHER
Full color shaft with a 3" fletch, plastic nock, and a metal point. Available in 24", 26", and 28" length with a 5/16" diameter shaft.
200-A \$3.00 doz.

PRACTICE FIELD ARROW
A fully dipped shaft of 5/16" diameter with multi-cresting, non-skid field point and a 4" fletch. Available in 26" or 28" length with either diameter shaft.
201-A \$4.80 doz.

MATCHED PRACTICE TARGET ARROWS
A white shaft of 5/16" diameter with a 3" fletch, matching crest and contrasting stripes. Spined 30-40 pounds and available in 24", 26" and 28" lengths.
202-A \$5.00 doz.

MATCHED PRACTICE FIELD AND HUNTING ARROWS
A 11/32" diameter white shaft with multi-crest, contrasting stripes and a 5" fletch. The shafts are spined at 40-50 pounds and 51-60 pounds.
203-A (Field) \$7.20 doz.
203-AH (Hi-Precision) \$10.95 doz.
203-AB (Bob-Kin) \$10.95 doz.
203-AR (Razorhead) \$12.90 doz.

All wooden practice arrows are packed in 1/2 gross display cartons. There is an additional charge of 50¢ per dozen for smaller quantities.

EXTRA MATCHED TARGET ARROWS
A 5/16" diameter white cedar shaft with contrasting crest and striping. A 3" fletch is standard. Please specify length of arrow and weight of bow.
204-A \$10.50 doz.

MATCHED FIELD AND HUNTING ARROWS
A 5/16" or 11/32" diameter cedar shaft with a full dip of either white and an attractive crest; or olive drab. A 5" spiral fletch is standard. Please specify length of arrow and weight of bow when ordering.
205-A (Field) \$ 9.95 doz.
205-AH (Hi-Precision) \$13.75 doz.
205-AB (Bob-Kin) \$13.75 doz.
205-AR (Razorhead) \$15.70 doz.
205-AP (No Point) \$ 9.95 doz.

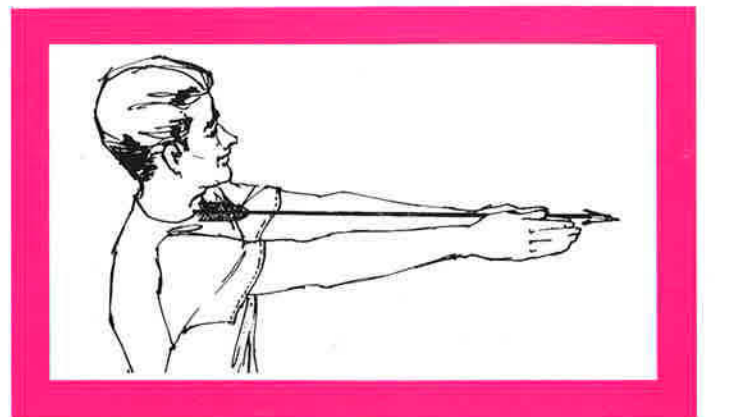
SELECTING CORRECT ARROW LENGTH

Hold yardstick at center of chest as shown. Your draw is measurement at fingertips.

EXTRA MATCHED CUSTOM FIELD AND HUNTING ARROWS
The highest quality wooden arrow available. A 5/16" or 11/32" diameter select cedar shaft with a full dip of white lacquer, beautifully crested and finished. Clear dyed feathers are used with a 5" spiral fletch. Please specify length of arrow and weight of bow when ordering.
206-AH (Field) \$13.50 doz.
206-AH (Hi-Precision) \$15.95 doz.
206-AB (Bob-Kin) \$15.95 doz.
206-AR (Razorhead) \$17.90 doz.
206-AP (No Point) \$12.00 doz.

MICRO-FLITE ARROWS FOR TARGET AND FIELD
A durable arrow that encourages precision shooting because it is permanently straight. Custom multi color crest with a spiral or straight fletching of clear dyed feathers. Specify length of arrow and weight of bow when ordering.
207-AT (Target) \$27.50 doz.
207-AF (Field) \$28.30 doz.
101-G (Micro-Flite glass shafts, 31" in length) \$12.60 doz.
102-G (Nock inserts) \$ 1.60 doz.
103-G (Target Points) \$ 2.00 doz.
104-G (Hunting inserts) \$ 2.40 doz.

EASTON ALUMINUM ARROWS
"The ultimate in accuracy", which is the No. 1 requirement of any tournament archer. It is one more way of saying "Easton aluminum arrows". Available in either 24srt-x or xx75 shafts with custom cresting and a spiral or straight fletch of clear dyed feathers.
208-AX (24srt-x Target) \$29.50 doz.
208-AXX (xx75 Target) \$34.50 doz.
111-X (24srt-x shafts only) \$20.80 doz.
111-XX (xx75 shafts only) \$25.80 doz.
112-X (24srt-x shafts cut to length and pointed) \$22.00 doz.
112-XX (xx75 shafts cut to length and pointed) \$27.00 doz.
113-X (Insert target points only) \$ 3.80 doz.



Arm Guards

Darton armguards have been designed to give maximum protection yet are light enough to give plenty of freedom when used. All the armguards are easily put on and resist riding up or down on the arm. Quality leathers, strong construction and excellent workmanship are featured.



AG-50



AG-45



AG-40



AG-131



AG-30



AG-20



AG-10



THE COMANCHE

This open-end, single seam glove fits to perfection. Elastic, adjustable wrist strap. Small, medium, large and extra large.

G-56 \$2.00

THE PROFESSIONAL III

This arm guard can be trimmed at seam to nestle at wrist or flexible enough to curve with the wrist. Single steel spine between leather and suede lining. Easy adjustment with 3 elastic straps.

AG-50 \$3.50

THE MARQUETTE

Vented closed-finger glove designed in soft leather. Small, medium, large, extra large.

G-55 \$1.75

THE HUNTER I

Three separate spring-steel spines bound between top-grain leather and soft suede lining. Three leather straps with buckles allow complete adjustment.

AG-45 \$3.25

THE JUAN

A vented closed-finger glove, with elastic wrist strap to allow for easy flexing of your fingers. Small, medium, large, extra large.

G-53C Cowhide Tanned — \$1.75
G-53H Horsehide Tanned — \$2.50

THE HUNTER II

Three adjustable elastic straps with patented fasteners secure this full-protection guard to the arm. Top grain leather, soft suede lining, three spring-steel spines.

AG-40 \$3.00

THE TANTOR

Featuring open-end finger sheaths and elastic wrist strap that keeps glove in place. Small, medium, large and extra large.

G-54C Cowhide Tanned — \$1.50
G-54H Horsehide Tanned — \$2.00

THE TARGET

Firm leather yet flexible, with six metal hooks for quick lacing with the elastic cord for snug fit. Easily slipped on and off.

AG-131 \$2.25

THE PROFESSIONAL I

Light-weight with added protection of a single steel spine, this two-strap professional model provides top grain leather and suede lining.

AG-30 \$2.00

MARSHALL TAB

The Marshall-style tab, has the lower half of soft suede and the upper face of smooth leather lock-stitched together. Specify Large, Medium, or Small when ordering.

T-101C Cowhide Tanned — \$.75
T-101H Horsehide Tanned — \$1.00

THE APACHE

An all leather, open end glove with an adjustable elastic wrist strap. Small, medium and large.

G-50 \$1.00

THE PROFESSIONAL II

Narrow design, with one spring-steel spine sewn between top grain leather and soft suede lining. Two elastic straps, patented fasteners.

AG-20 \$1.25

WESTERN TAB

Top grade leather, with smooth release surface, for those who prefer the Western style. Specify Large or Small.

T-105 \$.30

KWIK-KLASP

Special design permits this leather armguard to be put on or taken off in an instant, with elastic bands and single hook fastener.

AG-10 \$.75

TAB

Smooth elk or cordovan-tanned release surface for "hair-trigger" control. Specify Large or Small when ordering.

T-103 \$.30



G-56



G-55



G-53C
G-53H



G-54C
G-54H



G-50



T-101C
T-101H



T-105



T-103

Gloves and Tabs

Original in design . . . Darton gloves are carefully crafted from selected tanned leathers. These gloves are constructed to fit the hand and will stay on without slipping out of position. Perfection of fit is "designed in" whichever style you choose. Darton also has a fine selection of tabs.

TAB

Styled and shaped like the Marshall Tab with smooth release surface.

Available extra small only.

T-100 \$.25



T-100

Quivers

The Darton leather goods are crafted not only for their appearance but also for utility and use. The finest top grain leathers have been expertly selected and careful attention has been given to the workmanship in each piece manufactured. The Darton emblem stands for originality in design . . . and quality of product.



B-572



B-586



B-498



B-496

THE HASTINGS

A distinguished quiver, styled to carry twenty-five arrows in three compartments. Broad, adjustable shoulder strap held in position by a quick-snap side strap. Big pleated, zipper pocket.

B-572 \$19.95

THE CELTIC

The Celtic will carry 20 arrows in divided cut away top. Zipper pocket for accessories, pencil holder, adjustable strap and provision for securing quiver to your leg. Rings for cleaning tassel.

S-700 \$12.95

THE HUNTER

Comfortable with two-tone styling, and two compartments, with room for twenty arrows. Both shoulder straps adjust to hold your quiver in correct position. Zippered accessory pocket.

B-586 \$17.95

THE AGINCOURT

Ideal for target or field shooting. Divided compartment will hold 12 arrows. Pocket for cigarettes, pencil and score card plus rings for cleaning tassel. Adjustable strap for comfort. Also available in black.

S-600 \$7.95

THE POITIERS

This beautifully crafted, two-tone shoulder quiver carries twenty arrows in its two compartments.

B-498 \$14.95

THE SUSSEX

Styled in supple leather with zippered accessory pocket; carries 20 arrows in separate compartments. Adjustable belt clamp for easy, natural fit.

S-500 \$5.95

THE CRECY

Carries fifteen arrows without crowding. Arrow divider, broad shoulder strap for easy fit, zippered accessory pocket.

B-496 \$9.95

THE TARGETEER

Styled in waterproof leatherette, this side quiver adjusts to your preference. Carries 20 arrows in two compartments.

S-275 \$2.50



B-497



B-400



B-277



B-274

Back Quivers

All leather goods available in white on special order.

THE CRECY TOURNAMENT

Compact design to carry fifteen arrows without crowding, arrow divider, broad easy shoulder strap and handsome trim.

B-497 \$8.50

THE SAXON

The Saxon carries twenty arrows in its two compartments — and those essential accessories in the pleated snap-pocket. Adjustable shoulder strap for comfortable fit.

B-400 \$5.95

THE HUNTSMAN

A belt-slung quiver, especially designed for shorter arrows. Tough, plastic covered waterproof material with leather loop, swivel ring, and spring-steel clip.

S-262 \$.85

THE WOODSMAN

This twenty-arrow shoulder quiver is made of tough, plastic-coated waterproof material, with leather shoulder strap, trim, and heavy plastic bottom. Shoulder strap has adjustable buckle.

B-277 \$3.00

THE HUNTSMAN

A belt-slung quiver, especially designed for shorter arrows. Tough, plastic covered waterproof material, with leather loop and heavy leather bottom.

S-260 \$.75

THE ARCHER

Styled of tough, plastic-covered waterproof material. Top-grain leather trim, adjustable strap and heavy plastic bottom. Designed to serve as a second quiver, carries sixteen arrows.

B-274 \$2.00

BELT POUCH

Ideal for tips, extra strings, glove, string saver, and all your field supplies. Styled in soft, supple leather. It can be easily attached to a side quiver. Available in White or Brown.

P-395 \$3.95

Side Quivers Holster Quivers

The holster quiver is one of the most versatile. It uses advantages of both the side and hip quiver. Ideal for all around use, this style permits freedom of movement both indoor or outdoor.

THE ROYAL

This handsome black leather quiver is available either tooled or plain. It features a plastic tackle box in the utility pocket and double thickness of leather at your side. Arrow separators and tie down. Holds 8 arrows.

H-200 \$9.95

THE REGENCY

Available in either tooled or plain black leather. This holster style quiver features a tackle pocket, arrow separators, and tie down. Holds 8 arrows.

H-100 \$5.95



S-700



S-600



S-500



H-100

S-275

Pocket Quivers

POCKET QUIVER

This style has a hinged snap pocket of its own for bowstrings, other accessories. Two arrow compartments, carrying four arrows. Sewed and riveted.

B-129 \$2.50

POCKET QUIVER

Slips in back pocket, with loop snapping over belt. Carries four arrows. Divider strap.

B-139 \$1.50



S-271



S-262



S-260



P-395



BOW TIP PROTECTOR AND STRING SAVER

Designed in durable, elk tanned leather with double lock-stitch sewing. Reinforced elastic band.

S-75 \$7.95



FIELD POINT

Machine steel with 5 degree tapered, drilled.

10-PT
5/16" 100 gr. doz. \$.80
per hundred \$5.50

11-PT
11/32" 125 gr. doz. \$.80
per hundred \$5.50



TAPERED HOLE BLUNT

20-PT
5/16" 100 gr. doz. \$.80

21-PT
11/32" 125 gr. doz. \$.80



PARALLED HOLE TARGET

30-PT
5/16" doz. \$.60 — per hundred \$4.50

31-PT
11/32" doz. \$.60 — per hundred \$4.50



HI-PRECISION

40-BH
5/16" 110 gr. doz. \$3.75

41-BH
11/32" 125 gr. doz. \$3.75



BOD-KIN

50-BH
5/16" - 90 gr. doz. \$3.95

51-BH
11/32" - 112 gr. doz. \$3.95



STRING SERVER AND THREAD

Serves the bow string fast and easy. A new design on this helpful tool.

SS-1 tool and thread \$1.50

SERVING THREAD

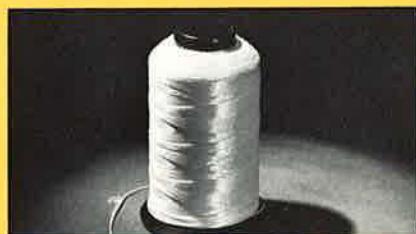
Colors: Scarlet, green, brown and orange.

10-ST \$.45

BOW STRING MATERIAL

Dacron 1100/2 type B, bonded and pre-waxed, 4oz. spool.

11-DB \$2.50



**ARROW REST
90° FEATHER**

8-A1 \$.50

**VERTICAL
FEATHER REST**

8-A2 \$.50

WOODEN SHAFTS

Matched to spine and weight.

121-W (5/16" or 11/32" dia.) doz. \$4.00

FERR-L-TITE CEMENTS

Liquid.

1-C \$.60

Hot Melt Stick

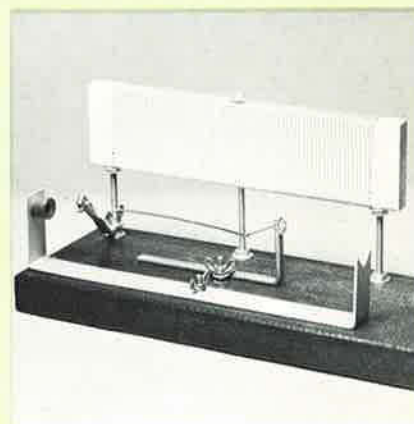
2-C \$.45



TAPER TOOL KIT

Tool holder and six inserts — you can cut 5 degree point taper and 11 degree nock taper for shafts from 1/4" to 3/8" in size.

9-A \$3.50



FEATHER BURNER

The Eastern Trimmer is a thoroughly designed, accurate, and fully tested feather trimmer. The switch and all adjustments are easily reached. This burner will trim feathers up to 6 inches.

51-D \$5.50

Trimming Wire
51-DW (3 to package) \$.50



FLETCHING JIG

The Eastern Fletcher is a precision tool that will meet all the requirements of the archer. Arrows, either straight or tapered, may be fletched. Nock sizes from 3/16" to 3/8", and shaft sizes from 1/4" to 3/8".

52-D \$5.50



BOW CASE

Brown vinyl, flannel-lined bow case with zipper that extends half way. Fully padded.

BC-150 \$ 7.50

BOW CASE

Black leather-grain vinyl completely pile-lined and padded.

BC-175 \$13.95

BOW CASE

One of the finest bow cases on the market today. This top grain leather case has a full length, heavy duty zipper, a handle and is completely fleece lined for protection of delicate finishes. 6" x 72".

BC-200 \$29.95



BOW CASE

Heavy weight Canton Flannel, with ties, to fit and protect any style of bow. Fully bound. 72" length only.

BC-100 \$1.50

BOW CASE

Heavy weight Canton Flannel, 6" wide by 72" long to carry the modern curved bows.

BC-120 \$1.85

Warranty

Due to the continuing effort of Darton, Inc. to improve its products, we reserve the right to make changes in prices, materials and models . . . also to discontinue models. Each Darton bow is fully guaranteed, should any failure occur within a period of 6 months from date of purchase, provided it shows no evidence of mishandling or abuse. Should a failure occur after 6 months and within 3 years from the date of purchase, replacement or repair will be made on a basis whereby the owner will pay for the use he has had from the bow at the following rate: 6 months to 1 year, 30% of list purchase price; 1 year to 1 1/2 years, 50% of list purchase price; 1 1/2 years to 3 years, 80% of list purchase price. To insure prompt service you should send the bow directly to Darton along with a letter explaining nature of claim, etc. Dealers are not authorized to make replacements or adjustments.



LITHO IN U.S.A.



3261 FLUSHING ROAD
FLINT 4, MICHIGAN

DARTON, Inc.
ARCHERY DIVISION