

# Box Score Report

TMHS vs Dickinson - Dec 9, 2022 - L 52-62

## Period Stats

Team	1	2	Final
TMHS	26	26	52
DHS	37	25	62

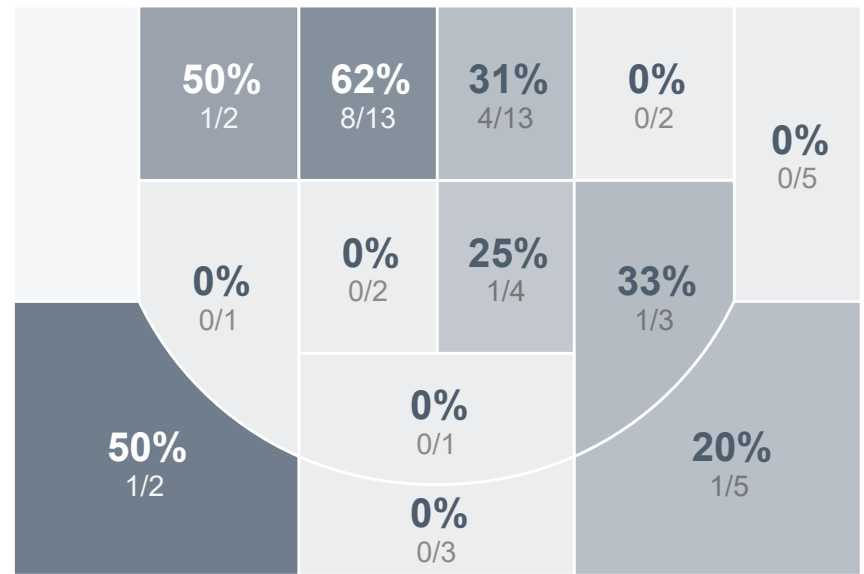
## Team Stats

	TMHS	DHS
Field Goal %	30.4%	32.8%
Effective Field Goal %	32.1%	34.3%
2FG Made/Attempted	15/41	20/55
2FG%	36.6%	36.4%
3FG Made/Attempted	2/15	2/12
3FG%	13.3%	16.7%
FT Made/Attempted	16/35	16/26
Free Throw Percentage	45.7%	61.5%
Points Per Possession	0.63	0.76
Transition Points	4	6
Points Off Turnovers	12	22
Second Chance Points	8	6
Points in the Paint	26	36
Offensive Rebounds	15	10
Defense Rebounds	36	25
Assists	10	10
Deflections	8	16
Steals	7	12
Blocks	3	3
Turnovers	25	12
Personal Fouls	21	24
Charges Taken	0	0

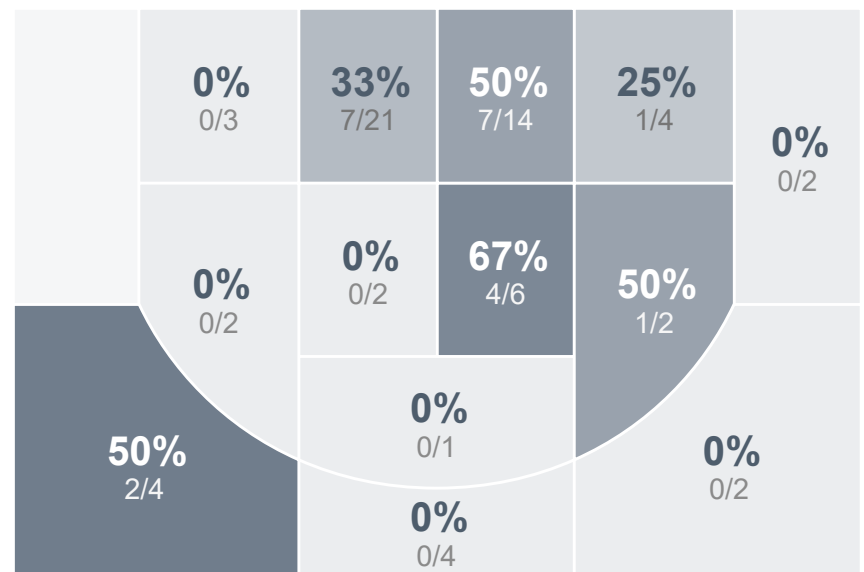
## Run Graph




## Girls Varsity Basketball



## Dickinson High School



## Girls Varsity Basketball's Player Stats

Name	Pts	FG	3FG	FT	+/-	MINS	OREB	DREB	AST	DEFL	STL	BLK	TO	FOUL	CHG
#1 Amya Gourneau	13	3/15	1/4	6/10	- 4	37	1	11	5	1	3	0	8	3	0
 #5 Unknown Athlete	2	1/5	0/1	0/2	- 19	30	0	2	0	1	1	0	1	1	0
#10 Irelei Zerr	5	1/5	0/1	3/7	- 19	28	4	5	0	0	0	0	1	0	0
#12 Giselle Vandal	0	0/5	0/4	0/0	- 7	27	1	1	2	2	0	0	4	3	0
#23 Gracie LaRocque	0	0/1	0/0	0/0	- 8	5	0	1	0	0	0	0	1	0	0
#24 Akealyes Azure	4	1/5	0/2	2/4	+ 4	11	1	0	0	1	0	0	0	1	0
#25 Sydnee Bruce	2	1/3	0/0	0/0	+ 5	17	0	4	2	2	3	1	3	3	0
#30 Quinn Laducer	14	7/9	0/0	0/4	+ 4	18	3	1	0	0	0	0	1	5	0
#33 Tiyahna Trottier	12	3/8	1/3	5/8	- 6	21	3	4	1	1	0	2	6	5	0

## Dickinson High School's Player Stats

Name	Pts	FG	3FG	FT	+/-	MINS	OREB	DREB	AST	DEFL	STL	BLK	TO	FOUL	CHG
#2 Emily Ash	20	5/15	1/3	9/12	+ 10	39	1	4	1	0	2	0	3	4	0
#5 Baylee Berg	2	1/1	0/0	0/0	- 5	34	0	5	0	0	1	0	1	3	0
#11 Lauren Selle	0	0/1	0/0	0/0	+ 7	23	2	0	0	1	0	0	1	1	0
#12 Abbey Dutke	3	1/4	1/3	0/0	+ 9	14	1	1	0	0	1	1	1	0	0
#13 Jazmin Barry	2	1/3	0/0	0/0	+ 1	7	1	0	0	0	0	0	1	2	0
#15 Braelynn Farnsworth	2	0/3	0/2	2/2	+ 4	10	0	1	1	1	0	0	2	3	0
#20 Caton Percy	14	6/20	0/3	2/7	- 3	25	0	1	6	7	5	0	3	4	0
#22 Kinzie Hoff	10	4/12	0/1	2/3	+ 16	23	2	3	1	3	2	1	0	4	0
#23 Sadie Stevenson	9	4/8	0/0	1/2	+ 11	22	2	8	1	4	1	1	0	3	0