



South Harborcreek United Methodist Church

7929 McGill Road, Harborcreek PA | (814) 899-5962 | SHUMHH@aol.com
www.southharborcreekumc.org | FB: South Harborcreek UMC | App: SHUMC

In-Person & Online Service @10AM | Children's Sunday School @10:30AM | Nursery Available For Parents & Children

Thursday, February 19, 2026

Pastor - J. Tim Hoover
Youth Director - Sue Tiegs
Music/Media Director - Linda Morey
Administrative Assistant - Katie Sadler
Building Facilitator - Mary Montgomery

Council Chair - Jim Loeffler
Secretary - Stephanie Kraft
Finance - Chuck Myers
Trustees - Joel Stewart
Staff Parish - Diane Senger

Council on Ministries - LeAnne Morton
Youth - Lia Hackenberg
Treasurer - Linda Stewart
Young Adults -
Lay Leader -

The Kingdom of Heaven: Yes There Will Be Weeds | Sunday Service 02/22/26

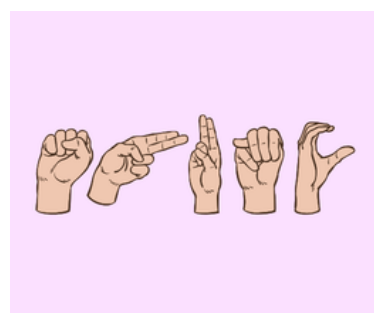


Have you ever thought about the “Kingdom of Heaven?” What will it be like; what can we expect; and what should we look for? Over the Lenten Season we will look at what the Bible has to say about the “Kingdom of Heaven.”

We often wonder at the evil in this world, yet in Matthew 13 Jesus tells a parable that there will be weeds planted among the good crops. God did not plant evil, but the enemy does.

The enemy desires nothing less than for us to doubt the goodness and holiness of God. This week we will look at what God says about being with us always and how to deal with the evil in this world.

You Are Always Welcome Here! Check Out Our Resources!



We welcome everyone and that includes both the Hard-of-Hearing and Deaf. Sign language interpretation during our Sunday service is available upon request. Please let the office know by the Thursday prior to your attendance and we will have arrangements made.



In our push toward total inclusion, we have Sunday bulletins available in Spanish now. We ask that you only take one if needed so those who are in need can have plenty available. Gracias!



We have small groups for you to join here at South Harborcreek. There's a group here that meets your needs! Check out our calendar or ask around to find out where you fit. You belong here!



We would like to gather updated contact information from you for our membership services! This will allow us to better track givings for our end of year statement process. This Sunday we will have contact cards in each bulletin with the necessary information. Please fill them out and turn them in. If you have any questions, please see Chuck Myers or Brenda Rodland.



This Sunday's Pre-k through 4th grade lesson, titled "God Is In First Place", will teach us that God deserves first place in our lives and will focus on Mark 10:17-27.



We are looking for SATB singers for an Easter Anthem for the 10:00am service on Easter, April 5. Practices begin on March 1 after church for about 20 minutes. Please plan to make as many practices as possible. There is a sign-up sheet in the Narthex. Any further questions can be directed to Linda Morey.



Elna's Bible Study is currently reading through "Imagine The God Of Heaven" by John Burke. They meet at 9:30am in the multi-purpose room on Tuesdays. All are welcome!



Christa Craven is hosting a Bible study on Tuesdays at 6pm where they will read "Why Did Jesus Have To Die?" by Adam Hamilton. This group is open to all.



The Administrative Board meeting that had been previously scheduled for Monday, February 16, is now being postponed until Monday, March 16. HOWEVER, there will be a brief Administrative Board meeting on Sunday, February 22, to discuss and vote on matters regarding Servant Keeper. Please plan on attending. If you are unable to, please reach out to Pastor Tim, Jim Loeffler or the church office. Thank you.



Join us Saturday, March 7th at 6:30pm for our Women of Worship's annual dessert auction! This years "Cabin Fever Buster" event will be fun for the whole family! We ask that you bring your favorite hors d'oeuvres to share and come ready to bid on some yummy treats! This years proceeds will go towards the SHUMC Mission Trips. Questions about this event or anything W.o.W related can be directed to Kris Loeffler or Diane Senger.



Are you looking for spiritual encouragement in your fitness journey? Join Bethany Brady and Julia Stranahan in their new Bible study group that will begin meeting on February 23 at 6:45pm at the church. This group will meet weekly as they read "The Body Tithes" devotional book. If you are interested in joining please reach out to either Bethany or Julia.



Mark your calendars for the 2026 Erie-Meadville District Conference on Saturday, April 25 at 2pm. The conference will be at Saegertown UMC.



If you have a new Bible Study, an event, or any other update that you would like sent to the church body - please contact the church office to get your message out in the Blast, Bulletin or mass email! Just send your request and adequate details to shumhh@aol.com and we'll take care of the rest!


2026 Winter Youth Activities

DATE	EVENT	STUDENT	SCHOOL	TIME
3/15/26	Jr. Philharmonic	Jonny Shaffstall	Strong Vincent	3PM
5/3/25	Jr. Philharmonic	Jonny Shaffstall	Strong Vincent	3PM


If you have any updated schedules for upcoming sports and activities, please send them to the office so we as a church can support our children and youth.

A Glance At The Next Two Months..

FEBRUARY 2025

SUN	MON	TUE	WED	THU	FRI	SAT
1  Communion	2	3 9:30AM Elna's Sm Grp 5:30PM Pastor Tim's Wesleyan Sm Grp 6PM Christa Craven Bible Study 6:30PM Band of Brothers	4 6:30AM Men's Study	5 6PM Praise Rehearsal 6:30PM Sweet & Salty Bible Study	6	7 1-3PM Shawl Ministry
8  Donut Sunday After Church: Soup-er Ball Sunday	9 6PM Council on Ministries Meeting	10 9:30AM Elna's Sm Grp 5:30PM Pastor Tim's Wesleyan Sm Grp 6PM Christa Craven Bible Study 6:30PM Band of Brothers	11 6:30AM Men's Study	12 6PM Praise Rehearsal 6:30PM Sweet & Salty Bible Study	13	14
15	16	17 9:30AM Elna's Sm Grp 5:30PM Pastor Tim's Wesleyan Sm Grp 6PM Christa Craven Bible Study 6:30PM Band of Brothers	18 6:30AM Men's Study	19 6PM Praise Rehearsal 6:30PM Sweet & Salty Bible Study	20	21
22 After Church Admin Council Mtg.	23 6:45-8PM Julia Stranahan and Bethany Brady Bible Study	24 9:30AM Elna's Sm Grp 5:30PM Pastor Tim's Wesleyan Sm Grp 6PM Christa Craven Bible Study 6:30PM Band of Brothers	25 6:30AM Men's Study	26 6PM Praise Rehearsal 6:30PM Sweet & Salty Bible Study	27	28

MARCH 2025

SUN	MON	TUE	WED	THU	FRI	SAT
1  Communion	2 6:45-8PM Julia Stranahan and Bethany Brady Bible Study	3 9:30AM Elna's Sm Grp 5:30PM Pastor Tim's Wesleyan Sm Grp 6PM Christa Craven Bible Study 6:30PM Band of Brothers	4 6:30AM Men's Study	5 6PM Praise Rehearsal 6:30PM Sweet & Salty Bible Study	6	7 1-3PM Shawl Ministry 6:30PM W.o.W. Cabin Fever Buster
8  Donut Sunday	9 6:45-8PM Julia Stranahan and Bethany Brady Bible Study	10 9:30AM Elna's Sm Grp 5:30PM Pastor Tim's Wesleyan Sm Grp 6PM Christa Craven Bible Study 6:30PM Band of Brothers	11 6:30AM Men's Study	12 6PM Praise Rehearsal 6:30PM Sweet & Salty Bible Study	13	14
15	16 6:30PM Admin Council Mtg. 6:45-8PM Julia Stranahan and Bethany Brady Bible Study	17 9:30AM Elna's Sm Grp 5:30PM Pastor Tim's Wesleyan Sm Grp 6PM Christa Craven Bible Study 6:30PM Band of Brothers	18 6:30AM Men's Study	19 6PM Praise Rehearsal 6:30PM Sweet & Salty Bible Study	20	21
22	23 6:45-8PM Julia Stranahan and Bethany Brady Bible Study	24 9:30AM Elna's Sm Grp 5:30PM Pastor Tim's Wesleyan Sm Grp 6PM Christa Craven Bible Study 6:30PM Band of Brothers	25 6:30AM Men's Study	26 6PM Praise Rehearsal 6:30PM Sweet & Salty Bible Study	27	28
29	30 6:45-8PM Julia Stranahan and Bethany Brady Bible Study	31 9:30AM Elna's Sm Grp 5:30PM Pastor Tim's Wesleyan Sm Grp 6PM Christa Craven Bible Study 6:30PM Band of Brothers				

“And when you fast, do not look gloomy like the hypocrites, for they disfigure their faces that their fasting may be seen by others. Truly, I say to you, they have received their reward. But when you fast, anoint your head and wash your face, that your fasting may not be seen by others but by your Father who is in secret. And your Father who sees in secret will reward you.”

Matthew 6:16-18