



# SHERIFF JAMES R. CLARKE JR.



## Annual Report

2  
0  
2  
4

17110 MONUMENT CIRCLE  
ISLE OF WIGHT, VIRGINIA 23397

**EMERGENCY**  
**911**



Non-Emergency  
757-357-2151



[WWW.IOWSO.COM](http://WWW.IOWSO.COM)

# **JAMES R. CLARKE JR., SHERIFF**

**Once again I am honored to serve the citizens of Isle of Wight County. This past year our office has experienced positive growth. That growth translates directly to our ability to offer you the highest level of service.**



**Our office strives to work hand-in-hand with community members. This collaborative approach ensures that your voices are heard and considered, leading to effective solutions.**

**By embracing and leveraging technology, the Sheriff's Office can enhance safety measures and improve communication, making us more adaptable to change. Prioritizing transparency and mutual respect will help build a stronger, more cohesive community where everyone feels valued and empowered to contribute.**

**Together, we can create a secure future that benefits all residents of Isle of Wight County.**



## **CODE OF HONOR**

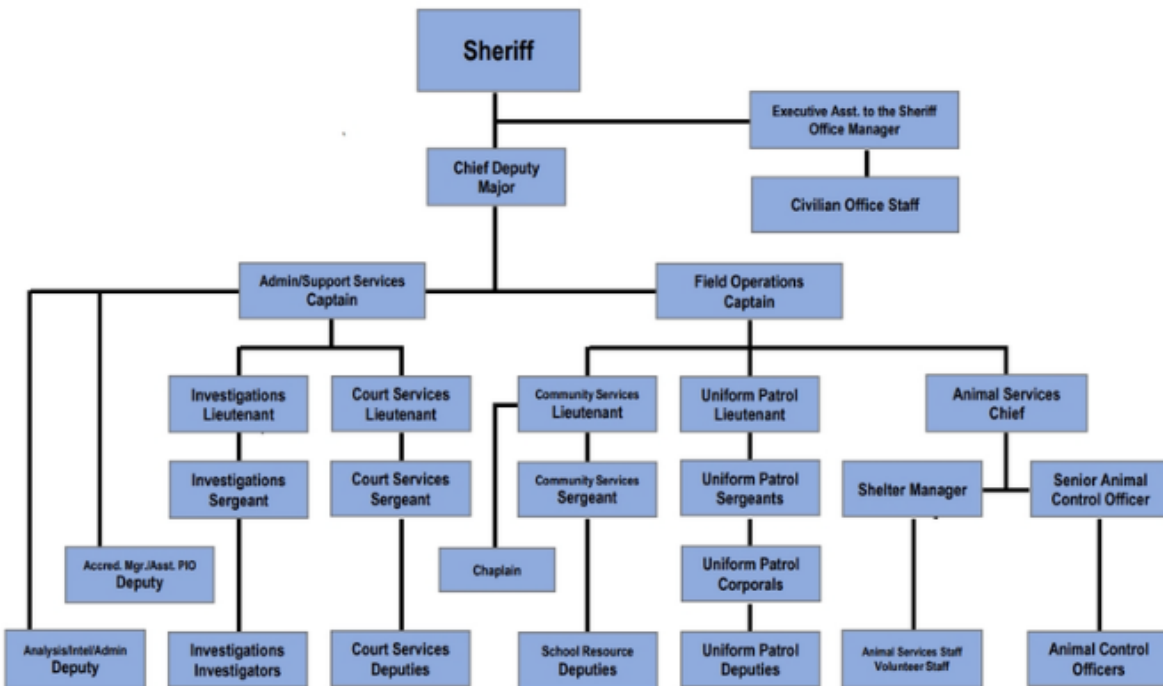
**ON MY HONOR, I WILL NEVER  
BETRAY MY BADGE, MY INTEGRITY,  
MY CHARACTER OR THE PUBLIC TRUST.  
I WILL ALWAYS HAVE THE COURAGE TO HOLD MYSELF  
AND OTHERS ACCOUNTABLE FOR OUR ACTIONS.  
I WILL ALWAYS UPHOLD THE CONSTITUTION, MY  
COMMUNITY, AND THE  
AGENCY I SERVE.**

## **MISSION STATEMENT**

**THE ISLE OF WIGHT COUNTY  
SHERIFF'S OFFICE IS DEDICATED  
TO PROTECTING THE LIVES,  
PROPERTY, AND RIGHTS OF ALL  
CITIZENS WE HAVE THE HONOR OF  
SERVING.**

# • ORGANIZATIONAL CHART

Isle of Wight County Sheriff's Office Organization Chart



DRAFT-2 eff 12/15/24

## DIVISIONS



**Uniform Patrol**



**Administrative**



**Community Services**



**Investigations**



**Animal Services**



**Court Services**

# EXECUTIVE STAFF



MAJOR JOSEPH WILLARD  
CHIEF DEPUTY



CAPTAIN THOMAS POTTER  
ADMINISTRATIVE/SUPPORT  
SERVICES



CAPTAIN RYAN ACEY  
FIELD OPERATIONS  
(12/01/2024 - present)



CAPTAIN RONALD BRYAN  
(RET. 11/30/2024)  
ADMINISTRATIVE SERVICES  
EMERGENCY COMMUNICATION  
CENTER DIRECTOR



# COMMAND STAFF



LIEUTENANT DONNIE BROWN  
COURT SERVICES



LIEUTENANT SUSAN MORGAN  
INVESTIGATIONS



LIEUTENANT RYAN ACEY  
COMMUNITY SERVICES

2024

Promoted to Captain

12/01/2024



LIEUTENANT ADAM COFIELD  
UNIFORM PATROL

# COMMUNITY SERVICES

The Community Services Division was established in December 2021. It is led by Lieutenant Ryan Acey and overseen by Sergeant Grayson Craun. This division takes on various responsibilities, including community relations, recruitment, the Chaplaincy Program, and the School Resource Officer Program. The Isle of Wight County Sheriff's Office is deeply dedicated to fostering a robust relationship with our community. Throughout this year, the Sheriff's Office has actively participated in numerous community events. Highlights include K9 demonstrations for schools and clubs, police car displays for birthday celebrations, community festivals, rock wall entertainment, Citizen Response to Active Shooter Event courses, and several career days.

Additionally, the Sheriff's Office has made significant efforts to ensure the safety of our senior citizens by delivering presentations at local AARP Association meetings, and churches. These educational sessions focus on fraud awareness and safety for the elderly population. We also collaborate with Project Lifesaver to provide tracking devices at no cost to eligible individuals. Furthermore, the Sheriff's Office partners with local organizations such as Parks and Recreation, Human Resources, and the Commission on Aging by participating in events with informational tables and giveaways. Every deputy is dedicated to strengthening this vital connection with our community during their shifts. We recognize that our work would be impossible without the unwavering support of our community!

# COURT SERVICES

2024 has seen many changes and upgrades in Court Services which have led to improved operations within the division.

- Added an additional two deputies to concentrate on court responsibilities, providing increased support during legal proceedings.
- Deputy Jennifer Rios was reassigned from the schools to Courts Services Division,
- The court schedule has been reorganized to offer more court days in the Circuit Court.
- A camera was installed in the deputys work room to enhance security and monitoring capabilities.
- Work room reorganization to help accommodate more personnel, fostering better workflow and teamwork.
- Three adjustable computer monitor stands were installed, enhancing usability and creating additional space for deputies while seated.
- Sergeant Mike Tuck moved from the deputies' work room to an independent space.
- The gun boxes from Sgt. Tuck's office has been relocated to improve accessibility and enhance security measures.
- An inventory of all keys assigned to the holding cells area and the Court building was conducted. The keys were tested and categorized to ensure proper accountability.
- Six new clients were enrolled in Project Lifesaver.



# INVESTIGATIONS

The Investigations Division is commanded by Lieutenant Susan Morgan and supervised by Sergeant Alex Johnson. There are five deputies assigned as investigators.

The Multi-Disciplinary Team actively assesses calls for service to ensure all cases are handled effectively. Investigators from the IOW Sheriff's Office pursue numerous leads across various specialties within the unit, often convening to discuss cases for collaborative responses and interventions. These cases encompass child sexual abuse, severe physical abuse and neglect, violent crimes, and fraud. Additionally, the unit collaborates with other law enforcement agencies to address crime on a regional scale. Investigator Sean Lacy and Investigator Matthew Van Wassen serve as Task Force Officers (TFO) on a Federal Task Force managed by the Department of Homeland Security Investigations. This task force allows the Sheriff's Office to operate across jurisdictional boundaries and leverage federal resources for cases in Isle of Wight County.

Investigator Mike Haskins and Investigator Donald Edwards are part of the Meherrin Drug Task Force. This Task Force consists of agents from various agencies, including the Virginia State Police, investigators from the Isle of Wight County Sheriff's Office, detectives from the Southampton Sheriff's Office, the Franklin Police Department, the Emporia Police Department, and the Smithfield Police Department. In 2024, the Task Force handled 34 felony cases, resulting in 34 arrests and the execution of 6 search warrants.

## INVESTIGATIONS cont.

The illegal narcotics seized included fentanyl, ecstasy, cocaine, methamphetamine, OxyContin, Adderall, crack cocaine, and marijuana, along with firearms. The total street value of the seized items was \$34,168.00. The Sheriff's Office Gang Unit was established to monitor gang activity in the county. Since its inception, the unit has filed multiple charges relating to gang participation and has classified dozens of individuals as street gang members and outlaw motorcycle gang members. Additionally, investigators have provided assistance to NCIS and neighboring jurisdictions in crimes related to gangs, including homicides and robberies.

The Digital Forensics Unit and Lab continues to grow and work child sexual abuse cases. Digital Forensic Investigators had multiple electronic devices to examine from each of these cases to include cellphones, computers, hard drives, thumb drives, and GPS devices. Isle of Wight County Sheriff's Office Digital Investigators also examine electronics involving child sexual abuse material for other jurisdictions that need this service to further their investigations. Investigators Lacy and Van Wassen continue their work with the Southern Virginia Internet Crimes Against Children (SOVA-ICAC) Task Force and the National Center for Missing and Exploited Children (NCMEC) to investigate child pornography and exploitation cases. These investigators continue to work closely with our regional, state, and federal partners to protect the children of Isle of Wight County. In 2024, Inv. Lacy examined 52 devices, and K9 Pixel was deployed 17 times. Inv. Van Wassen examined 78 devices.

# UNIFORM PATROL

The Patrol Division consists of 33 deputies dedicated to providing 24-hour law enforcement services to the residents of Isle of Wight County.

The Patrol Division Commander is Lieutenant Adam Cofield, who is supported by Sergeants Thomas Deacon, Eric Bertram, Josh Bunch, and Adam Cornwell. Additionally, Corporals Beale, Hancock, Smith, Patton, Warren, and Marshall aid in supervision.

Patrol deputies actively monitor the county and respond to both emergency and routine calls. They conduct daily patrol checks of neighborhoods, businesses, and schools, while also being responsible for criminal and traffic crash investigations. Besides offering law enforcement services, they also engage with the community to prevent crime, address traffic issues proactively, and collaborate with local organizations to tackle community concerns.



- **K9 Hades**
- **German Shepherd**
- **Female**
- **Patrol Explosives**



# ANIMAL SERVICES

- Successfully hosted two affordable rabies and microchip clinics in collaboration with Banfield Pet Hospital and Pennies 4 Paws, with no cost to the county.
- Implemented a new records management system that has enhanced the overall capability to manage and store essential animal records in and out of the facility.
- Continued collaboration with various animal care agencies to hold multiple adoption events at the Isle of Wight County Animal Services Facility.
- Welcomed 1,328 animals into the facility, reflecting a 43% increase from 2023.
- Achieved 551 adoptions, marking a 128% increase from the previous year.
- Reduced euthanasia rates by 46% compared to 2023.
- Successfully transferred 368 animals, a 75% increase from last year.
- Expanded partnerships with additional animal care organizations.
- Responded to 1,583 service calls.
- Rescued 41 dogs, 5 wolf hybrids, and 7 horses from unsuitable living conditions.

Isle of Wight County Animal Services is proud to collaborate with local groups and organizations, including the 4H Club, Westside Elementary, Nansemond Suffolk Academy, Windsor High School, and Isle of Wight Academy, to engage children in community service through field trips and special projects.

Animals received	1,328
Animals returned to owners	121
Animals adopted	551
Animals Transferred	368
Animals Euthanized	67

# AWARDS AND RECOGNITIONS



**Deputy of the Year - Isle of Wight Ruritan Club**  
*Investigator Rashiem Franklin*



**Lifetime MADD Award**  
*Corporal Chad Beale*



**Top Cop - Greater Hampton Roads Crime line**  
*Investigator Rashiem Franklin*



**Deputy of the Quarter 1**  
*Deputy Lucy Lacore*



**Deputy of the Quarter 2**  
*Deputy Tyler Ezell*



**Deputy of the Quarter 3**  
*Deputy Carlo Moore*



**FBI-NA Weight Lifting Award**  
*Lieutenant Ryan Acey*



**Windsor High School "Inspire" Isle Award**  
*SRO Deputy Natalie Mathews*

- **K9 Mack**
- **Bloodhound**
- **Male**
- **Track/Trail**



# PERSONNEL AND TRAINING

**DEPUTY 1ST CLASS MATHEW FORNI AND K9 MAX**  
Certified in Narcotics Detection and Courier.



**SENIOR INVESTIGATOR KAREN HANLEY**  
became the first deputy in agency history to  
Successfully certify as a Polygraph Examiner.

**SERGEANT THOMAS DEACON**  
completed the 18th Annual Leadership  
Institute.



**SRO DEPUTY TYLER MCGOOGAN**  
became a D.A.R.E. Instructor

**LIEUTENANT RYAN ACEY**  
Complete the 291st session of the Federal  
Bureau of Investigation, National Academy.



## **AGENCY-WIDE REFRESHER AND RECERTIFICATION TRAINING :**

- ✓ Active Shooter
- ✓ Emergency Vehicle Operations
- ✓ Tactical Baton
- ✓ TASER
- ✓ Pepper Spray/OC
- ✓ Firearms
- ✓ Use of Force



# COMMUNITY ACTIVITIES

**COMMISSION ON AGING  
SWEETHEART BALL**

**ISLE OF WIGHT SCHOOL WIDE  
DR. SEUSS DAY  
READ ACROSS AMERICA**

**ISLE OF WIGHT/WINDSOR/SMITHFIELD  
PARADES**

**NATIONAL POLICE WEEK  
HONORING FALLEN OFFICERS  
AND THEIR FAMILIES**

**VIRGINIA SHERIFF'S INSTITUTE  
\$ 1000 SCHOLARSHIP PRESENTED**

**TOYS-FOR-TOTS AND IOW FOSTER FAMILIES  
BARK-IN-THE-PARK**

**NATIONAL NIGHT OUT  
COMMUNITY AWARENESS**

**SPECIAL OLYMPICS  
LAW ENFORCEMENT TORCH RUN**

**LARP CLUB PLAY  
ENCOURAGING FAMILY AND OUTDOOR PLAY**

**TRUNK-OR-TREAT  
EVENTS**

**PARKS AND RECREATION  
HOLIDAY LUNCHEON**

# PROMOTIONS AND RETIREMENTS

## Promotions in 2024

**SERGEANT ADAM COFIELD**  
promoted to Lieutenant

**CORPORAL THOMAS DEACON**  
promoted to Sergeant

**DEPUTY ANTHONY PATTON**  
promoted to Corporal

**DEPUTY RUSSELL WARREN**  
promoted to Corporal

**DEPUTY GEORGE SMITH**  
promoted to Corporal

**INVESTIGATOR 1ST CLASS KAREN HANLEY**  
promoted to Senior Investigator

**DEPUTY ALECIA PAUL**  
promoted to Deputy 1st Class

**DEPUTY ANDREW PARSAIN**  
promoted to Deputy 1st Class

**DEPUTY ROBERT CRAWFORD**  
promoted to Deputy 1st Class

**DEPUTY EDMUND COOK**  
promoted to Deputy 1st Class

## Retired in 2024

Timothy Phipps

Paul Krohn

Morgan Hanks

Roy Richards

Ronald Bryan



- **K9 Max**
- **German Shepard**
- **Male**
- **Narcotics and Tracking**

# STATISTICS

## Isle of Wight County Sheriff's Office • Monthly Activity Report - CY 2024

STATISTICAL INFO YTD TO LAST MONTH COMPLETED-

2024

01.05.25

	MEAN (AVG)	MEDIAN	HIGHEST	LOWEST
<b>Calls for Service</b>				
Law Enforcement	3,556	3,522	4,254	2,862
Animal Services	156	131	240	101
GRAND TOTAL	3,712	3,653	4,421	2,963
School Checks (num)	32	29	87	10
School Checks (time H:M)	21:11	18:08	55:53	5:26
False Alarms	4	5	10	0
Escorts	4	3	10	1
Proactive CFS Count	2,728	2,742	3,364	2,048
Proactive CFS % total	73.31%	75.08%	76.66%	68.71%
<b>Traffic</b>				
Traffic Stops	255	241	325	130
Traffic Summons	163	161	230	37
Traffic Warnings	#DIV/0!	#NUM!	0	0
Traffic Crashes	66	65	90	50
<b>Criminal Process</b>				
Misdemeanor Charges	76	80	93	59
Felony Charges	40	33	56	30
Total Charges	117	112	138	95
<b>Civil Process</b>				
Writ- Levy	2	1	4	0
Writ- Repo	1	3	3	0
Evictions	15	20	23	5
All Other Civil	1,185	1,214	1,377	930
GRAND TOTAL	867	908	994	694
<b>Other</b>				
Gun Permits	77	83	99	43
Fingerprints (non crim.)	24	18	52	11
Reports (IBR)	58	52	80	41
Reports (Non-IBR)	175	173	202	140
ECO/TDO (num)	8	9	19	3
ECO/TDO (time hhh:mm)	142:22	120:48	432:52	7:49
Domestic Assault Arrests	7	7	12	2
Elder Crime Victims	19	15	24	14

Totals may change between reporting periods due to ongoing investigations, case updates, error correction, and late reporting.



# STATISTICS cont.

## Isle of Wight County Sheriff's Office • Monthly Activity Report - CY 2024

01.05.25	JAN	FEB	MAR	APR	MAY	JUN	JUL	AUG	SEP	OCT	NOV	DEC	2024 YTD	2023 YTD	% chng
<b>Calls for Service</b>															
Law Enforcement	3,711	3,169	3,604	3,506	3,263	3,657	4,254	3,572	4,164	3,580	2,862	3,333	42,675	42,106	1.35%
Animal Services	150	138	175	174	240	191	167	123	147	155	101	111	1,872	1,583	18.26%
<b>GRAND TOTAL</b>	<b>3,861</b>	<b>3,307</b>	<b>3,779</b>	<b>3,680</b>	<b>3,503</b>	<b>3,848</b>	<b>4,421</b>	<b>3,695</b>	<b>4,311</b>	<b>3,735</b>	<b>2,963</b>	<b>3,444</b>	<b>44,547</b>	<b>43,689</b>	<b>1.96%</b>
<b>School Checks (num)</b>															
School Checks (time H:M)	17:43	27:02	18:34	19:09	25:00	5:26	6:15	7:36	55:53	32:52	20:13	18:33	254:21	257:30	-1.22%
False Alarms	1	4	0	1	4	10	1	6	9	3	5	9	53	36	47.22%
Escorts	5	2	2	6	4	4	7	10	2	5	4	1	52	71	-26.76%
Proactive CFS Count	2,893	2,412	2,775	2,725	2,407	2,738	3,364	2,786	3,305	2,690	2,048	2,591	32,734	32,344	1.21%
Proactive CFS % total	74.93%	72.94%	73.43%	74.05%	68.71%	71.15%	76.09%	75.40%	76.66%	72.02%	69.12%	75.23%	73.48%	74.03%	-0.74%
<b>Traffic</b>															
Traffic Stops	201	249	274	220	282	308	325	297	291	203	130	280	3,060	3,123	-2.02%
Traffic Summons	117	162	202	136	153	178	230	205	212	114	37	205	1,951	2,310	-15.54%
Traffic Warnings													1,401	1,139	23.00%
Traffic Crashes	69	50	69	54	64	63	57	54	71	85	90	61	787	863	-8.81%
<b>Criminal Process</b>															
Misdemeanor Charges	93	67	88	59	82	76	93	80	83	68	59	66	914	882	3.63%
Felony Charges	32	48	36	36	56	30	41	47	35	35	56	33	485	412	17.72%
<b>Total Charges</b>	<b>125</b>	<b>115</b>	<b>124</b>	<b>95</b>	<b>138</b>	<b>106</b>	<b>134</b>	<b>127</b>	<b>118</b>	<b>103</b>	<b>115</b>	<b>99</b>	<b>1,399</b>	<b>1,294</b>	<b>8.11%</b>
Service Pending												392	392	165	137.58%
Expired-Returned Unserved													39	15	160.00%
<b>Civil Process</b>															
Writ- Levy	1	2	1	1	1	1	4	2	1	4	0	1	19	9	111.11%
Writ- Repo	3	1	0	0	2	0	0	1	2	1	1	2	13	15	-13.33%
Evictions	17	15	18	9	22	8	16	15	11	5	16	23	175	141	24.11%
All Other Civil	1,283	1,177	1,097	1,191	1,294	1,139	1,377	1,234	1,150	1,202	930	1,145	14,219	11,948	19.01%
<b>GRAND TOTAL</b>	<b>940</b>	<b>903</b>	<b>726</b>	<b>920</b>	<b>924</b>	<b>780</b>	<b>994</b>	<b>943</b>	<b>819</b>	<b>880</b>	<b>694</b>	<b>876</b>	<b>10,399</b>	<b>12,113</b>	<b>-14.15%</b>
<b>Other</b>															
Gun Permits	92	70	99	66	43	58	75	82	91	91	88	73	928	940	-1.28%
Fingerprints (non crim.)	14	21	52	20	17	11	21	46	11	21	35	22	291	239	21.76%
Reports (IBR)	63	55	57	64	51	80	51	75	57	49	49	41	692	677	2.22%
Reports (Non-IBR)	192	162	193	202	175	201	151	160	186	179	140	153	2,094	2,014	3.97%
ECO/TDO (num)	7	9	9	19	11	6	7	4	5	11	3	10	101	101	0.00%
ECO/TDO (time hh:mm)	81:13	71:36	193:36	432:52	213:19	141:41	109:53	88:16	77:56	129:54	7:49	160:22	1708:33	1547:04	10.44%
Domestic Assault Arrests	4	2	12	6	2	9	8	8	9	6	5	9	80	83	-3.61%
Elder Crime Victims	15	22	19	24	16	20	20	20	20	14	19	15	224	221	1.36%

REVISED- 01.05.25

Totals may change between reporting periods due to ongoing investigations, case updates, error correction, and late reporting.

## SCHOOL CHECKS CALENDER YTD 2024

SCHOOL	COUNT	TIME hh:mm	% COUNT	% TIME
Carrollton Elementary School	50	29:21	12.9%	11.5%
Carrsville Elementary School	70	38:23	18.0%	15.1%
Georgie D Tyler Middle School	27	20:09	6.9%	7.9%
Hardy Elementary School	47	32:48	12.1%	12.9%
Isle Of Wight Academy	1	0:28	0.3%	0.2%
Smithfield High School	40	27:49	10.3%	10.9%
Smithfield Middle School	25	15:33	6.4%	6.1%
Westside Elementary School	22	21:32	5.7%	8.5%
Windsor Elementary School	46	22:57	11.8%	9.0%
Windsor High School	61	45:16	15.7%	17.8%
<b>Grand Total</b>	<b>389</b>	<b>254:21</b>	<b>100.0%</b>	<b>100.0%</b>
<b>Average time on message</b>		<b>0:39</b>		

Note: These times only reflect actions of -NON- SRO Personnel

# STATISTICS cont.

## Isle of Wight County Sheriff's Office Select Group A Index Crimes 2024 (w/ 2023 comparison)

*This data excluded crime reports made to the town police departments (Smithfield PD and Windsor PD); however, they may include crimes that occurred within those self reporting jurisdictions if those crimes were specifically reported to and investigated by IOWSO.*

	Homicide 21A		Rape 11A		Robbery 120		Ag Assault 13A		Burglary 220		Larceny 23		MV Theft 240		Arson 260		TOTALS		
	2023	2024	2023	2024	2023	2024	2023	2024	2023	2024	2023	2024	2023	2024	2023	2024	23 TOT	24 TOT	% Change
	1	0	0	0	0	0	1	2	0	2	17	10	1	0	0	0	20	14	
	0	0	1	0	0	0	3	6	0	1	10	7	1	1	0	0	15	15	
	0	0	0	0	0	0	0	3	0	2	3	11	0	1	1	0	4	17	
	1	0	0	0	0	0	3	2	1	2	14	12	1	0	0	0	20	16	
	0	0	0	0	0	0	3	3	0	0	12	13	1	1	0	0	16	17	
	0	0	0	0	0	0	6	0	0	0	17	22	2	7	0	0	25	29	
	0	0	0	0	0	0	4	0	2	1	11	13	4	4	0	0	21	18	
	0	0	0	0	0	0	3	7	0	2	14	10	4	0	0	0	21	19	
	0	0	0	0	0	1	2	2	2	0	6	16	1	1	0	0	11	20	
	0	0	0	0	1	1	4	3	2	2	11	13	0	0	1	0	19	19	
	1	0	0	0	0	0	2	2	2	0	11	4	1	1	1	0	18	7	
	0	0	0	0	0	0	0	4	1	1	9	9	0	1	0	0	10	15	
YTD TOTAL	3	0	1	0	1	2	31	34	10	13	135	140	16	17	3	0	200	206	3.0%
% Change		-100.0%		-100.0%		100.0%		9.7%		30.0%		3.7%		6.3%		N/A		3.0%	
CRIMES AGAINST PERSONS 2024										CRIMES AGAINST PROPERTY 2024									
36										170									
2023										2023									
36										164									
TOTAL 2024										TOTAL 2023									
206										200									
0.0%										3.7%									

NOTICE: THE DATA IN THIS REPORT IS DYNAMIC AND MAY CHANGE AS CASES ARE RECLASSIFIED, RECORDS EXPUNGED, OR ERRORS CORRECTED

SOURCE: IOWSO RMS DATA AS OF 03.21.24 FOR ALL 2023 DATA AND 01.05.25 FOR 2024 DATA  
ISLE OF WIGHT COUNTY SHERIFF'S OFFICE //PWN-55

- K9 Nova
- Dutch Shepherd
- Female
- ExplosivesDetection





# STATISTICS cont.

## CALLS FOR SERVICE - 2024

RANK	NATURE	COUNT	% TOTAL
1	PATROL CHECK	16,073	36.08%
2	CIVIL PAPER	4,985	11.19%
3	BUILDING CHECK	3,491	7.84%
4	TRAFFIC STOP	3,061	6.87%
5	BUSINESS CHECK	2,540	5.70%
6	ANIMAL COMPLAINT	1,854	4.16%
7	CITIZEN ASSIST	1,844	4.14%
8	SUSPICIOUS PERS./VEH/ACTIVITY	1,025	2.30%
9	PAPER SERVICE	846	1.90%
10	TRAFFIC CRASH	747	1.68%
11	ASSIST OTHER JURISDICTION	725	1.63%
12	DISABLED VEHICLE	620	1.39%
13	ALARM - BURGLARY	578	1.30%
14	POLICE INVESTIGATIONS	460	1.03%
15	RECKLESS DRIVING	394	0.88%
16	SCHOOL CHECK	389	0.87%
17	WELFARE CHECK	350	0.79%
18	TRAFFIC HAZARD	319	0.72%
19	MEDICAL CALL	318	0.71%
20	COMMUNITY RELATIONS	242	0.54%
21	DOMESTIC - VERBAL ONLY	239	0.54%
22	LARCENY	174	0.39%
23	DISTURBANCE-LOUD NOISE	152	0.34%
24	K-9 DEPLOYMENT	137	0.31%
25	BE ON THE LOOKOUT	129	0.29%
26	ANIMAL COMPLAINT	126	0.28%
27	DESTRUCTION OF PROPERTY	124	0.28%
28	SHOTS FIRED INVESTIGATION	121	0.27%
29	JUVENILE ISSUE	119	0.27%
30	BUSINESS ASSIST	115	0.26%
31	FRAUD	114	0.26%
32	911 HANG UP	107	0.24%
33	FIRE RELATED ASSIST	107	0.24%
34	TRESPASS	107	0.24%
35	DOMESTIC ASSAULT	105	0.24%
36	PSYCHIATRIC PROBLEMS	100	0.22%
37	EVICITION	96	0.22%
38	OFFICER INFORMATION	78	0.18%
39	EMERGENCY PROTECTIVE ORDER	65	0.15%
40	PROJECT LIFESAVER	64	0.14%
41	DISORDERLY INDIVIDUAL	63	0.14%
42	DIRECT PATROL	60	0.13%
43	THREATS	58	0.13%
44	TEMPORARY DETENTION ORDER	57	0.13%
45	ASSAULT	54	0.12%
46	HARRASSMENT	54	0.12%
47	DRIVING UNDER THE INFLUENCE	52	0.12%
48	POLICE ESCORT	52	0.12%
49	FOOT PATROL	50	0.11%
50	PRISONER TRANSPORT	48	0.11%

RANK	NATURE	COUNT	% TOTAL
51	EMERGENCY CUSTODY ORDER	44	0.10%
52	DISPUTE (NON-FAMILY)	43	0.10%
53	HIT AND RUN	40	0.09%
54	HOUSE CHECK	39	0.09%
55	DRUG OFFENSES	34	0.08%
56	FOUND PROPERTY	33	0.07%
57	TRAFFIC CONTROL	31	0.07%
58	ABANDONED VEHICLE	27	0.06%
59	CIVIL MATTER	27	0.06%
60	PARKING VIOLATION	26	0.06%
61	SEX OFFENSES	23	0.05%
62	ARCING WIRES DOWN POWER LINES	22	0.05%
63	MISSING PERSON	22	0.05%
64	RUNAWAY	21	0.05%
65	STOLEN VEHICLE	21	0.05%
66	ALARM - MEDICAL	19	0.04%
67	BURGLARY - RESIDENTIAL	18	0.04%
68	OVERDOSE	17	0.04%
69	POSSIBLE DOA	17	0.04%
70	PROTECTIVE ORDER VIOLATION	16	0.04%
71	PERSONAL PROTECTIVE ORDER	15	0.03%
72	SHOPLIFTING	15	0.03%
73	FLOCK ALERT/HIT	14	0.03%
74	UNAUTHORIZED USE OF AUTO	14	0.03%
75	DRUNK IN PUBLIC-INTOXICATED	13	0.03%
76	FIGHT IN PROGRESS	12	0.03%
77	ILLEGAL DUMPING	11	0.02%
78	LOST PROPERTY	11	0.02%
79	NEIGHBOR DISPUTE	11	0.02%
80	ALARM - UNK TYPE	10	0.02%
81	ASSIST BOATER	10	0.02%
82	WEAPONS OFFENSES	10	0.02%
83	ALARM - ROBBERY	9	0.02%
84	CHILD OR ANIMAL LOCKED IN CAR	7	0.02%
85	RECOVER STOLEN PROPERTY	7	0.02%
86	BURGLARY - COMMERCIAL	6	0.01%
87	FINGERPRINTS	6	0.01%
88	ATTEMPT SUICIDE	4	0.01%
89	CHILD ABUSE OR NEGLECT	4	0.01%
90	OTHER/UNKNOWN PROBLEM	4	0.01%
91	POLICE ASSIST RESCUE SQUAD	4	0.01%
92	TRANSPORT - CITIZEN/OTHER	4	0.01%
93	INDUSTRIAL ACCIDENT	3	0.01%
94	REPOSSESSION	3	0.01%
95	SUICIDE	3	0.01%
96	BOMB/BOMB THREAT	2	0.00%
97	ALL OTHERS	7	0.02%
	<b>TOTAL</b>	<b>44,547</b>	<b>100%</b>
	<b>TOP TEN</b>	<b>36,466</b>	<b>81.86%</b>
	<b>01.03.25</b>		

RANK	CFS BY ZONE YTD 2024	COUNT	% TOTAL
1			
2	IOW4	17,236	38.7%
3	IOW1	9,645	21.7%
4	IOW2	5,580	12.5%
5	IOW3	5,426	12.2%
6	SMIT	3,433	7.7%
7	WIND	1,902	4.3%
8	IOW9	948	2.1%
9	IOW0	283	0.6%
10	BOLO	94	0.2%
T	<b>TOTAL</b>	<b>44,547</b>	<b>100.0%</b>





















# Thank You

**The members of the Isle of Wight County Sheriff's office wish to express our heartfelt appreciation for the incredible support and partnership our community provides. Your trust and cooperation are the cornerstones of our efforts to maintain a safe and secure environment for everyone in Isle of Wight County.**

**Whether through your active participation in community events, your willingness to report suspicious activity, or your simple act of being a good neighbor, your contributions make a real difference in our shared mission of public safety.**

