

Easy  
**SpringPlus**  
CORDLESS SHADE SYSTEM

***Roller Shade  
Installation Instructions***



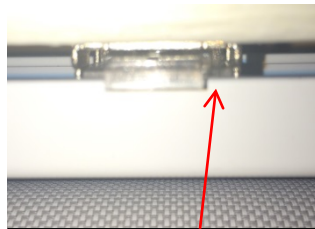
## Installation Instructions

### 1-1/4" (32mm) Single System (Inside & Outside Mount)

Step 8. Install Mounting Brackets & Headrail (Mounting brackets should be installed every 18" starting from no more than 2" in from the end of the headrail)

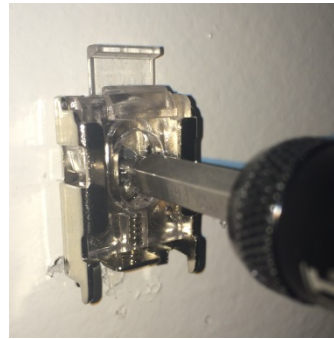
#### For Headrail RE0080110

Inside Mount



Headrail clipped into mounting bracket

Outside Mount

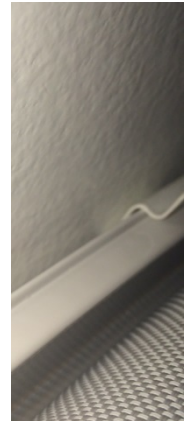


#### For Headrail RE0080810

Inside Mount



Outside Mount

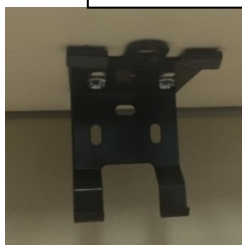


#### For Cassette 100 & 120

Cassette 120 shown

Mounting brackets for Cassette 100 are slightly different

Inside Mount



Outside Mount

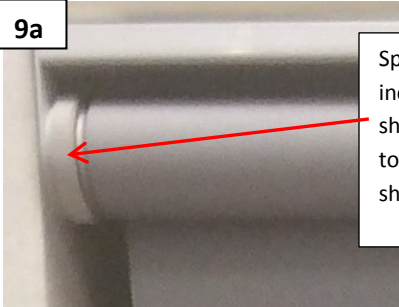


**Step 9. To Adjust spring and stop:**

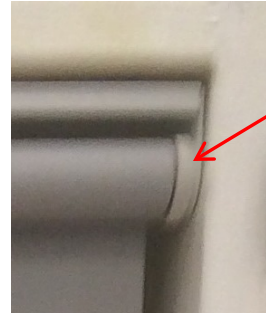
**9a. Brackets with adjuster wheel**

**9b. Brackets without adjuster wheel**

**9a**



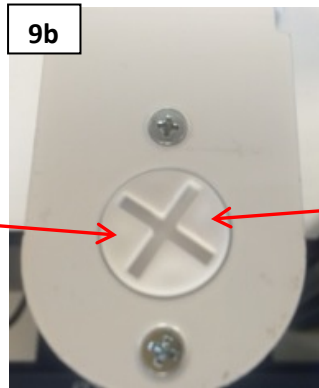
Spring: Turn Clockwise to increase the speed of the shade, and counterclockwise to reduce the speed the shade goes up.



Stop: Turn Clockwise to lower stop, and counterclockwise to raise stop.

**9b**

Spring: Use screwdriver and turn Clockwise to increase the speed of the shade, and counterclockwise to reduce the speed the shade goes up.



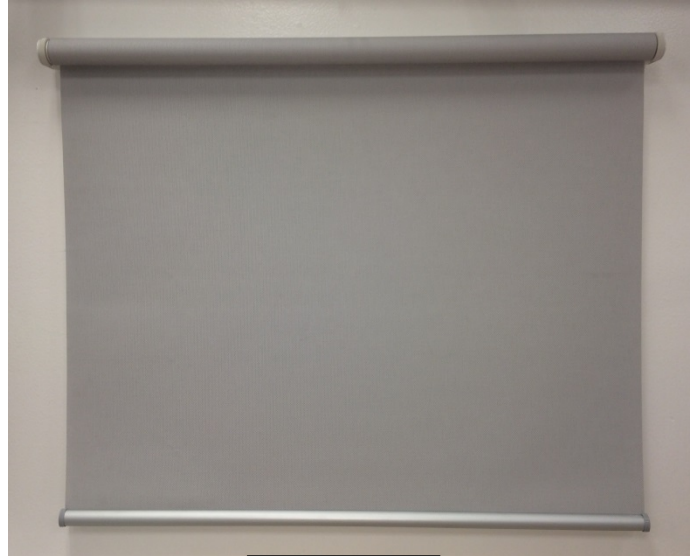
Stop: Use screwdriver and turn Clockwise to lower stop, and counterclockwise to raise stop.

**Installed Shade**

*Single Shade Shown*



Inside Mount



Outside Mount

***Cassette System***

