



16,500 Sq.Ft. for Lease

26395 Northline Commerce Dr.

Listing ID:

Status:

Active

Property Type:

Industrial For Lease

Industrial Type:

Flex Space

Contiguous Space:

57,200 SF

Total Available:

16,500 SF

Lease Rate:

Lease Type:

Loading:

3 Docks, 3 Doors

Ceiling:

20 - 22 ft.

Office SF:

1,286 SF

Drive-In Bays:

3 Bay



Overview/Comments

For lease by owner. 16,500 sq.ft. of Light Industrial available with 3 truck wells and 3 grade level overhead doors. Gross lease. We pay for building taxes, insurance, landscaping, and snow removal. Call Rea Construction for a tour at 734-946-8730.

Visit our website at <http://www.rea-construction.net>.

More Information Online

WWW.REACONSTRUCTION.NET

General Information

Tax ID/APN:	263960770	Building Name:	Northline Commerce Park
Industrial Type:	Cold Storage, Flex Space, Industrial-Business Park, Manufacturing, Mixed Use, Light Industrial, Warehouse/Distribution	Building/Unit Size (RSF):	16,500 SF
		Usable Size (USF):	16,500 SF
Zoning:	Light Industrial	Land Area:	25 Acres

Available Space

Suite/Unit Number:	608-610	Conference Rooms:	0
Space Available:	16,500 SF	Offices:	2
Minimum Divisible:	16,500 SF	Office SF:	1,286 SF
Maximum Contiguous:	57,200 SF	Kitchen/Breakroom:	Yes
Space Description:	1,286 sq.ft. of office with 15,214 sq.ft. of shop.	Parking Spaces:	24
Space Type:	Relet	Loading Docks:	3
Date Available:	11-01-2025	Loading Doors:	3
Lease Rate:		Drive In Bays:	3
Lease Type:	Modified Gross	Ceiling Height:	22
Rent Escalators:	Fixed Lease	Clear Height:	20

Area & Location

Property Located Between:	Beech Daly and Inkster
Highway Access:	I94
Airports:	DTW

Building Related

Tenancy:	Multiple Tenants	Year Renovated:	2004
Total Number of Buildings:	7	Roof Type:	Flat
Number of Stories:	1	Construction/Siding:	Block
Office Space SF:	1,286 SF	Parking Type:	Surface
Property Condition:	Good	Total Parking Spaces:	24
Year Built:	2001	Column Spacing:	40

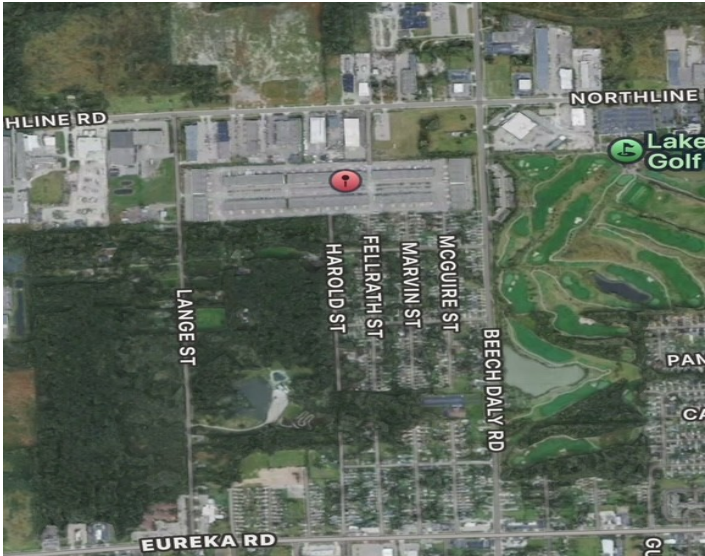
Passenger Elevators:	0	X-Phase:	3 208
Freight Elevators:	0	Heat Type:	Natural Gas, Suspended Radiant Heaters
Sprinklers:	Wet	Heat Source:	Central
Amps:	200	Lighting:	Metal Halide
Volts:	480	Internet Access:	Cable

Land Related

Zoning Description:	Light Industrial
Water Service:	Municipal
Sewer Type:	Municipal

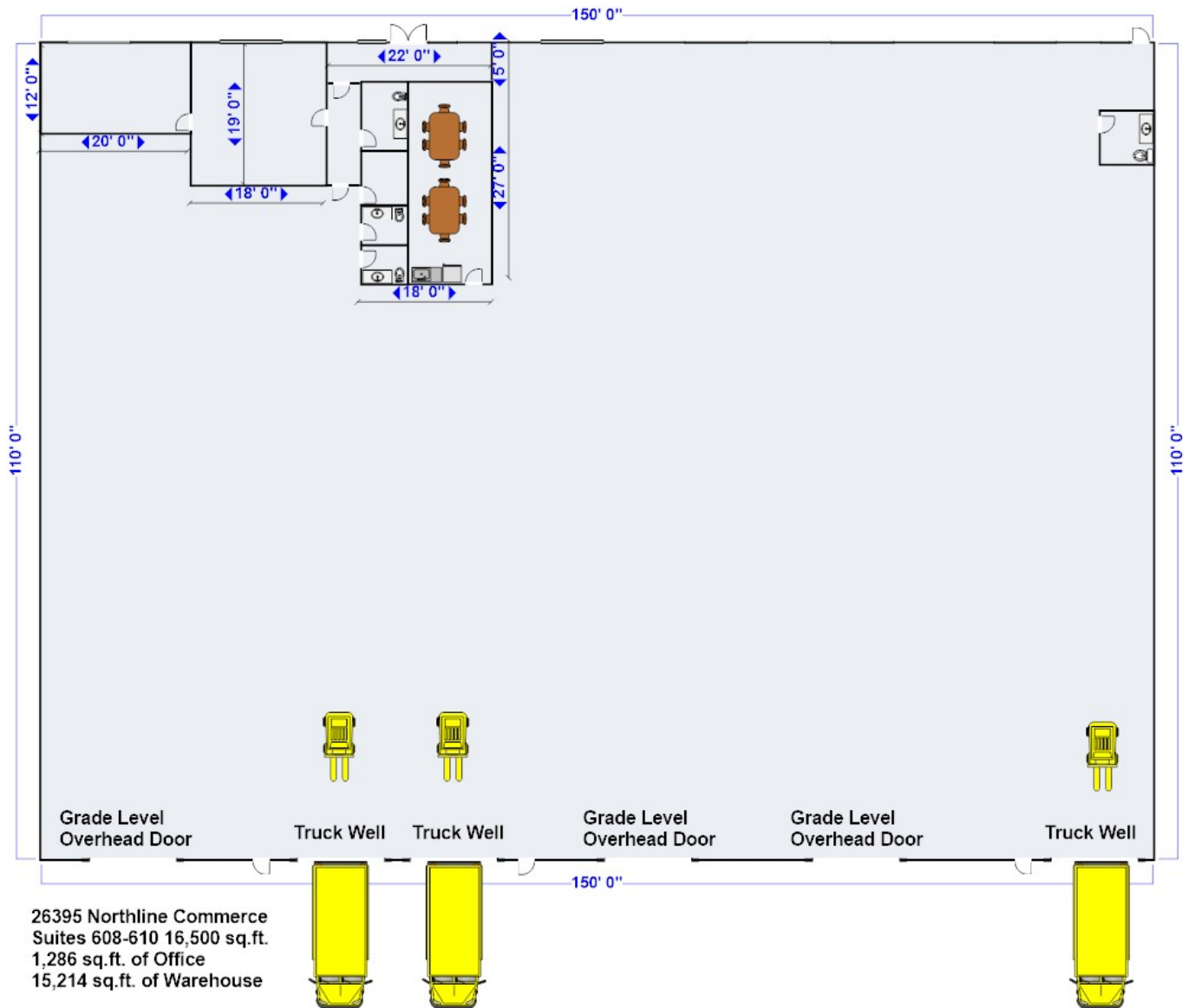
Location

Address:	26395 Northline Commerce Dr. Taylor Mi. 48180	MSA:	Detroit-Warren-Dearborn
County:	Wayne	Submarket:	Airport District



Property Images





Property Contacts



Salvatore Giordano
Rea Construction

734-946-8730 [0]