

PARTS IN THIS VIEW ARE ROTATED  
OUT OF POSITION FOR CLARITY  
ASSEMBLE PER VIEW A-A  
SHOWN ON SHEET 2

NOTES:

1. ALL DIMENSIONS EXCEPT CLEARANCES GIVEN INCH PSIG  
MILLIMETERS ; BAR .
2. VALVE CANNOT BE OPENED WITHOUT OIL PRESSURE.
3. NUMBER TURNS TO STROKE VALVE 39.
4. ALL CLEARANCES DIAMETRICAL AND INCHES ONLY UNLESS OTHERWISE NOTED.
5. VALVE SHALL BE HYDROSTATICALLY TESTED AT 2250 PSIG (180 BAR) FOR STRENGTH AND POROSITY. AND AT 1350 PSIG (90 BAR) FOR SEAT TIGHTNESS.
6. PARTS LIST NP2151, 14795. VALVE OPERATING & MAINTENANCE INSTRUCTIONS GC-135. FASTENER REMOVAL & TORQUE INSTRUCTIONS GC-268. PIPING RECOMMENDATIONS GC-119. RECOMMENDED PREVENTIVE MAINTENANCE INSTRUCTIONS GC-277.

NOTES CONT'D:

7. ALL STEAM FLANGE GASKET FACES SHALL HAVE PHONOGRAPHIC OR CONCENTRIC FINISH 125 TO 250 MICROINCHES, 24 TO 40 SERRATIONS PER INCH OF UNIFORM DEPTH. CUTTING TOOL .06 RADII OR LARGER.

NOTES CONT'D:

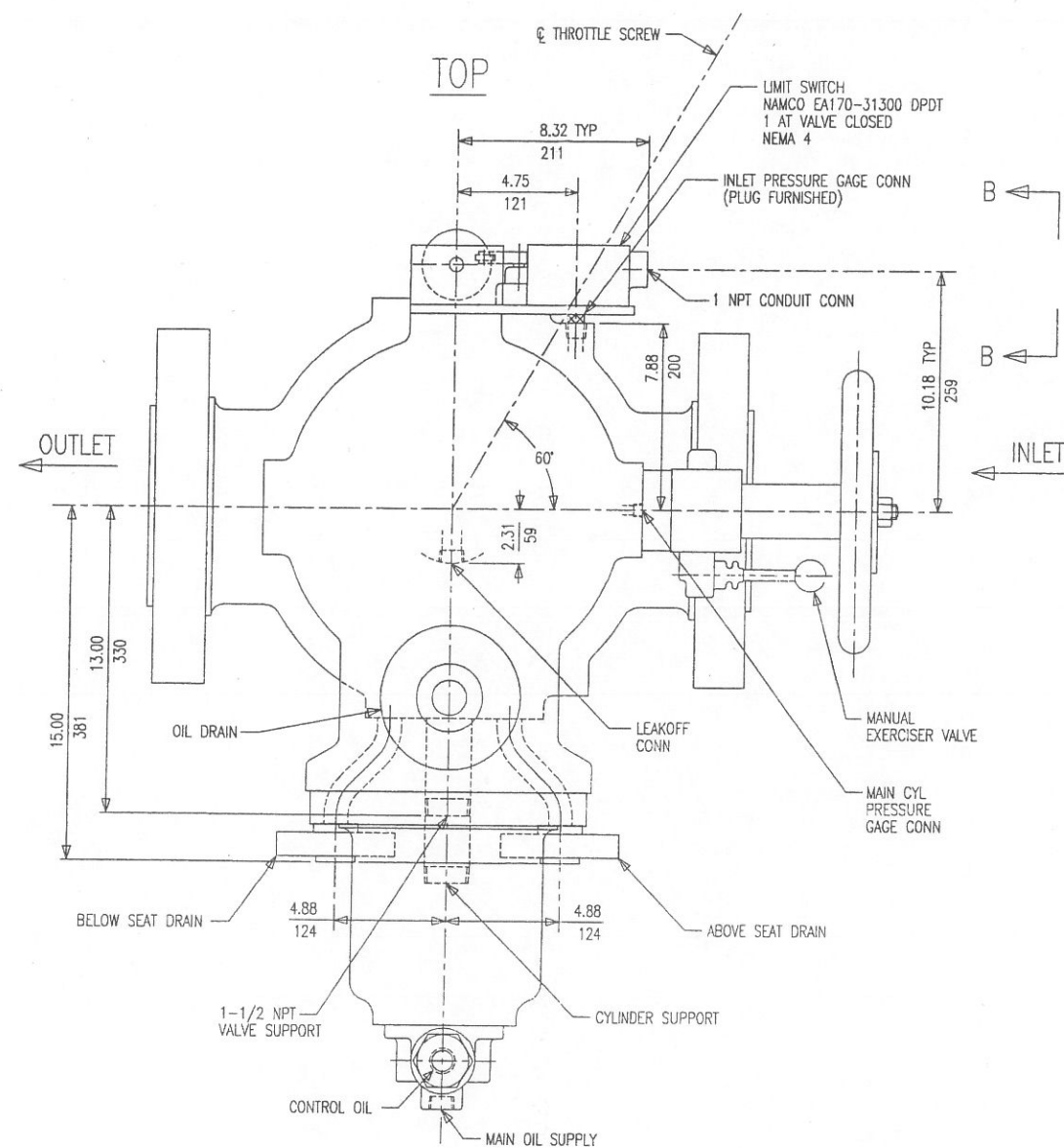
8. CORROSION RESISTANT LINKAGE FOR OUTDOOR INSTALLATION.

JO	CUSTOMER	CUST ORDER NO	QTY	STEAM CONDITIONS	CONTROL OIL PRESS	MAIN OIL PRESS	REMARKS
16551	TUTHILL CORP	4500181528	(1) ONE	PRESS 850 MAXIMUM OPERATING	TEMP 750°F DESIGN	NORM 15 TRIP 5 RESET 10 NORM 100 TRIP 30-45 RESET 11-12 RELAY POP-UP	

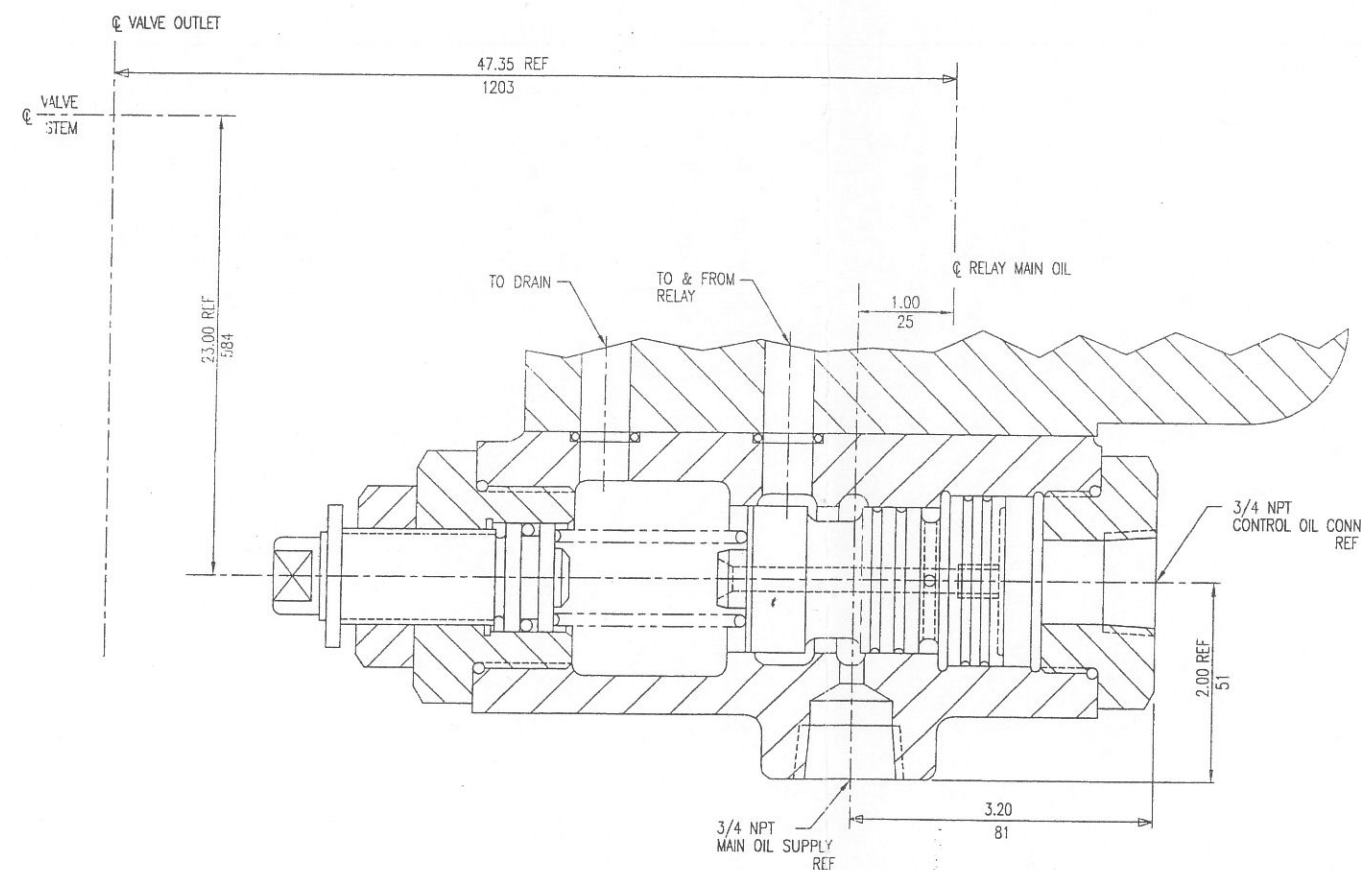
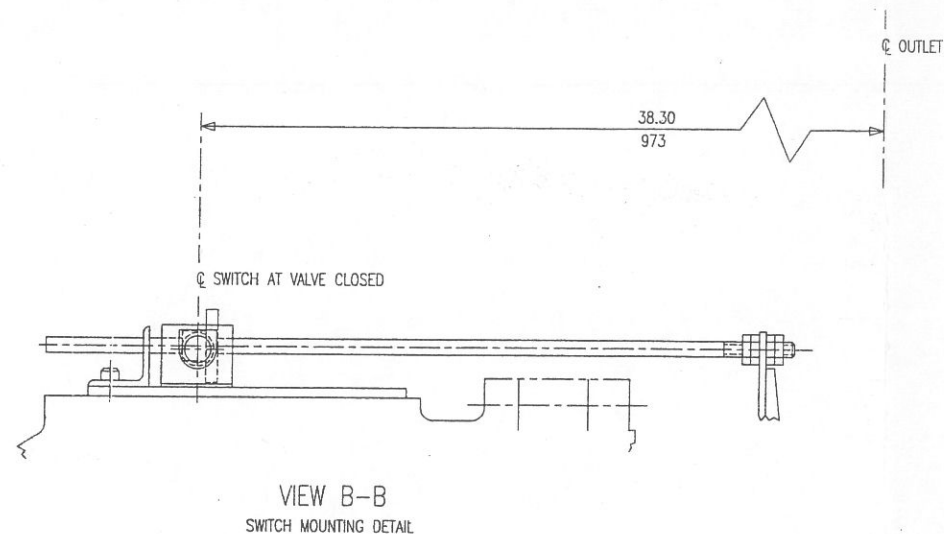
DATE DRAWN 6-13-2001 TRACED RMH CHECKED WAR APPROVED WAR ORDER NO 01-16551 APPD	NPS 6 CLASS 900 TRIP THROTTLE VALVE INVERTED OIL OPERATED 13.00 DIA CYL NPS 6 CL 900 INLET NPS 6 CL 900 OUTLET HARD PACKING, SINGLE LEAKOFF, BACKSEAT, MANUAL EXERCISER, DOUBLE PISTON RELAY, STRAINER, TEMPORARY SCREEN, (1) SWITCH, LP CONTROL RELAY SCALE= NONE CIN-X	GIMPEL YARWAY CORPORATION BLUE BELL, PA. CODE IDENT NO 93591 DRAWING NUMBER P7618 REV SHT 1 OF 2
--	--	---

CERTIFIED  
1 2101





**VIEW A-A  
ASSEMBLE PER THIS VIEW**



**LOW-PRESSURE CONTROL RELAY DETAIL**

CAN BE ROTATED IN 45° INCREMENTS  
ABOUT C OF MAIN OIL RELAY  
SCALE 1/1

DATE 6-13-2001	RMH	NPS 6 CLASS 900 TRIP THROTTLE VALVE INVERTED OIL OPERATED 13.00 DIA CYL NPS 6 CL 900 INLET NPS 6 CL 900 OUTLET HARD PACKING, SINGLE LEAKOFF, BACKSEAT, MANUAL EXERCISER, DOUBLE PISTON RELAY, STRAINER, TEMPORARY SCREEN, (1) SWITCH, LP CONTROL RELAY	GIMPEL YARWAY CORPORATION BLUE BELL, PA. CODE IDENT NO 93591
DRAWN TRACED CHECKED APPROVED ORDER NO APPD	WAR WAR 01-16551	SCALE= 1/4	DRAWING NUMBER P7618
		WT ACTUAL	REV

NSV 55