

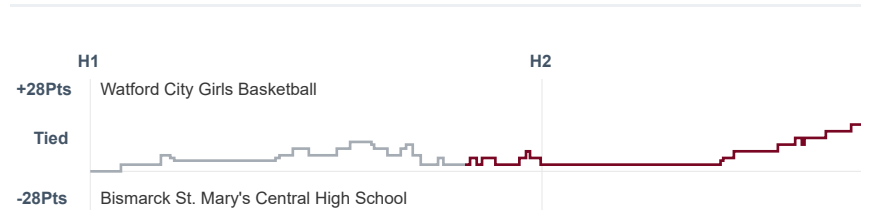
# Box Score Report

WCHS vs SMCHS - Feb 9, 2021 - W 61-36

## Period Stats

Team	1	2	Final
<b>WCHS</b>	<b>26</b>	<b>35</b>	<b>61</b>
SMCHS	24	12	36

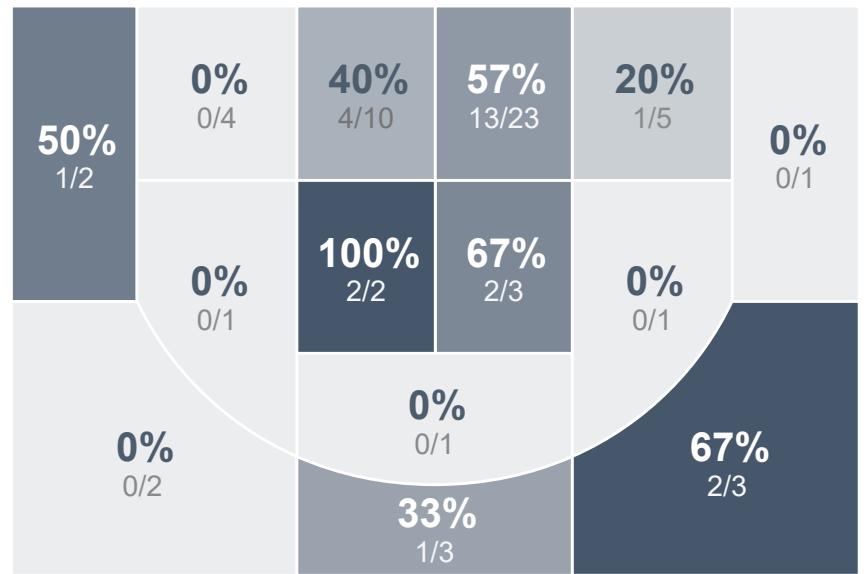
## Run Graph



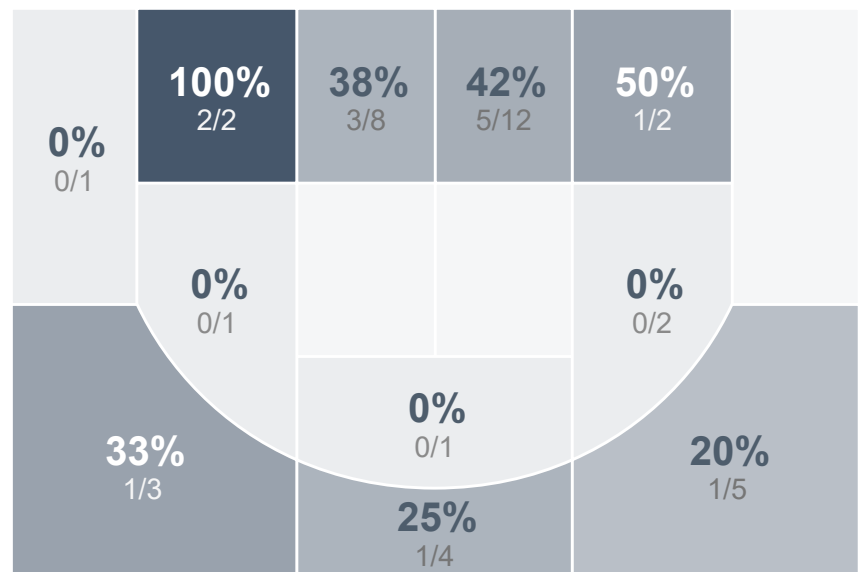
## Team Stats

	WCHS	SMCHS
Field Goal %	42.6%	34.1%
Effective Field Goal %	45.9%	37.8%
2FG Made/Attempted	22/50	11/28
2FG%	44.0%	39.3%
3FG Made/Attempted	4/11	3/13
3FG%	36.4%	23.1%
FT Made/Attempted	5/5	5/5
Free Throw Percentage	100.0%	100.0%
Points Per Possession	0.96	0.58
Transition Points	12	2
Points Off Turnovers	30	5
Second Chance Points	15	2
Points in the Paint	42	16
Offensive Rebounds	17	5
Defense Rebounds	22	17
Assists	16	9
Deflections	7	9
Steals	13	6
Blocks	4	1
Turnovers	17	24
Personal Fouls	9	7
Charges Taken	0	0

## Watford City Girls Basketball



## Bismarck St. Mary's Central High School



## Watford City Girls Basketball's Player Stats

Name	Pts	FG	3FG	FT	+/-	MINS	OREB	DREB	AST	DEFL	STL	BLK	TO	FOUL	CHG
#1 Hayley Ogle	8	3/7	0/2	2/2	+ 35	25	2	3	2	0	3	0	3	3	0
#2 Jaelyn Ogle	0	0/1	0/0	0/0	- 3	2	0	0	0	1	0	0	1	0	0
#4 Kymber-Lee McGorman	0	0/0	0/0	0/0	0	1	0	0	0	0	0	0	0	0	0
#5 Jessica Mogen	6	2/3	2/2	0/0	+ 22	28	2	4	3	1	1	1	2	0	0
#11 Gracen Breitbach	3	1/2	1/2	0/0	+ 11	19	0	2	2	0	1	0	1	1	0
#12 Emma Mogen	2	1/7	0/1	0/0	+ 24	31	1	1	3	2	3	2	2	0	0
#14 Akira Hogue	0	0/0	0/0	0/0	- 3	2	0	0	0	0	0	0	0	0	0
#22 Jordyn Peterson	0	0/0	0/0	0/0	- 3	2	0	2	0	0	0	0	0	0	0
#23 Audrey Fowler	0	0/0	0/0	0/0	0	1	0	1	0	0	0	0	0	0	0
#24 Ashley Holen	19	9/22	0/1	1/1	+ 17	27	3	2	3	0	1	0	4	1	0
#40 Madison Spacher	19	8/16	1/3	2/2	+ 17	26	5	4	3	1	4	1	1	1	0
#50 Riley Faller	4	2/3	0/0	0/0	+ 8	18	2	1	0	2	0	0	2	3	0

## Bismarck St. Mary's Central High School's Player Stats

Name	Pts	FG	3FG	FT	+/-	MINS	OREB	DREB	AST	DEFL	STL	BLK	TO	FOUL	CHG
#0 Gabbi Mann	5	2/6	1/2	0/0	+ 1	9	0	0	0	1	0	0	0	0	0
#2 Lydia Spies	9	3/7	1/3	2/2	- 23	30	1	4	1	1	1	0	7	1	0
#4 Grace Vetter	0	0/1	0/0	0/0	- 11	14	0	0	0	0	0	0	3	2	0
#10 Brooke Haas	3	1/8	1/4	0/0	- 18	26	1	4	1	1	0	1	3	1	0
#11 Peyton Goldade	0	0/0	0/0	0/0	+ 1	2	0	0	0	0	0	0	0	0	0
#13 Lexi Gerving	0	0/3	0/2	0/0	- 20	19	2	0	2	4	1	0	5	0	0
#14 Allison Jackson	4	1/1	0/0	2/2	- 7	11	0	0	1	0	1	0	1	0	0
#20 Josie Armstrong	3	1/3	0/0	1/1	- 17	18	0	0	2	0	1	0	1	0	0
#22 Mykie Messer	12	6/10	0/2	0/0	- 23	31	1	4	2	1	2	0	3	2	0
#24 Eden Schlinger	0	0/1	0/0	0/0	- 9	19	0	1	0	1	0	0	1	1	0
#32 Abby Seamands	0	0/1	0/0	0/0	+ 1	2	0	0	0	0	0	0	0	0	0
#33 Grace Grimm	0	0/0	0/0	0/0	0	2	0	2	0	0	0	0	0	0	0