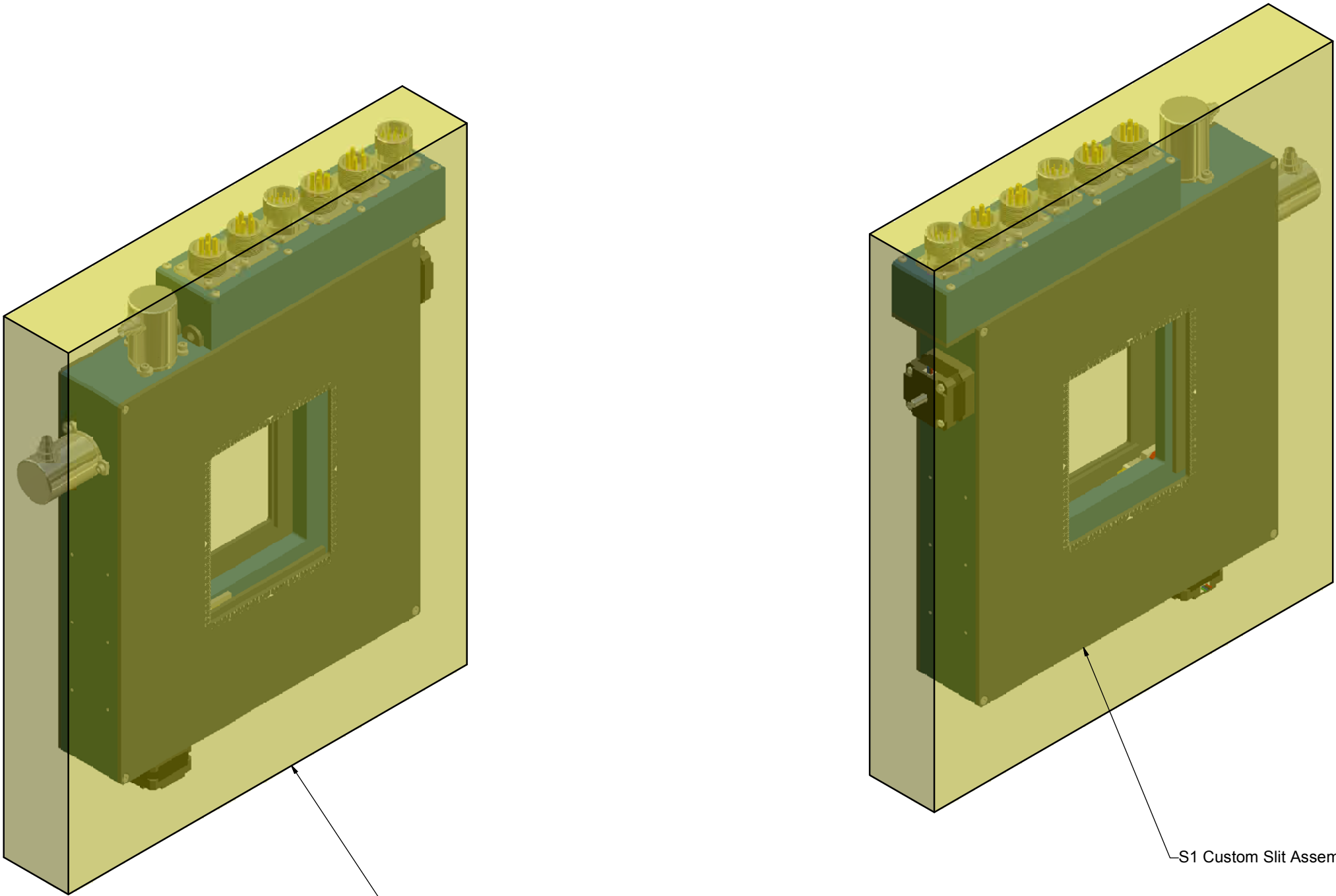


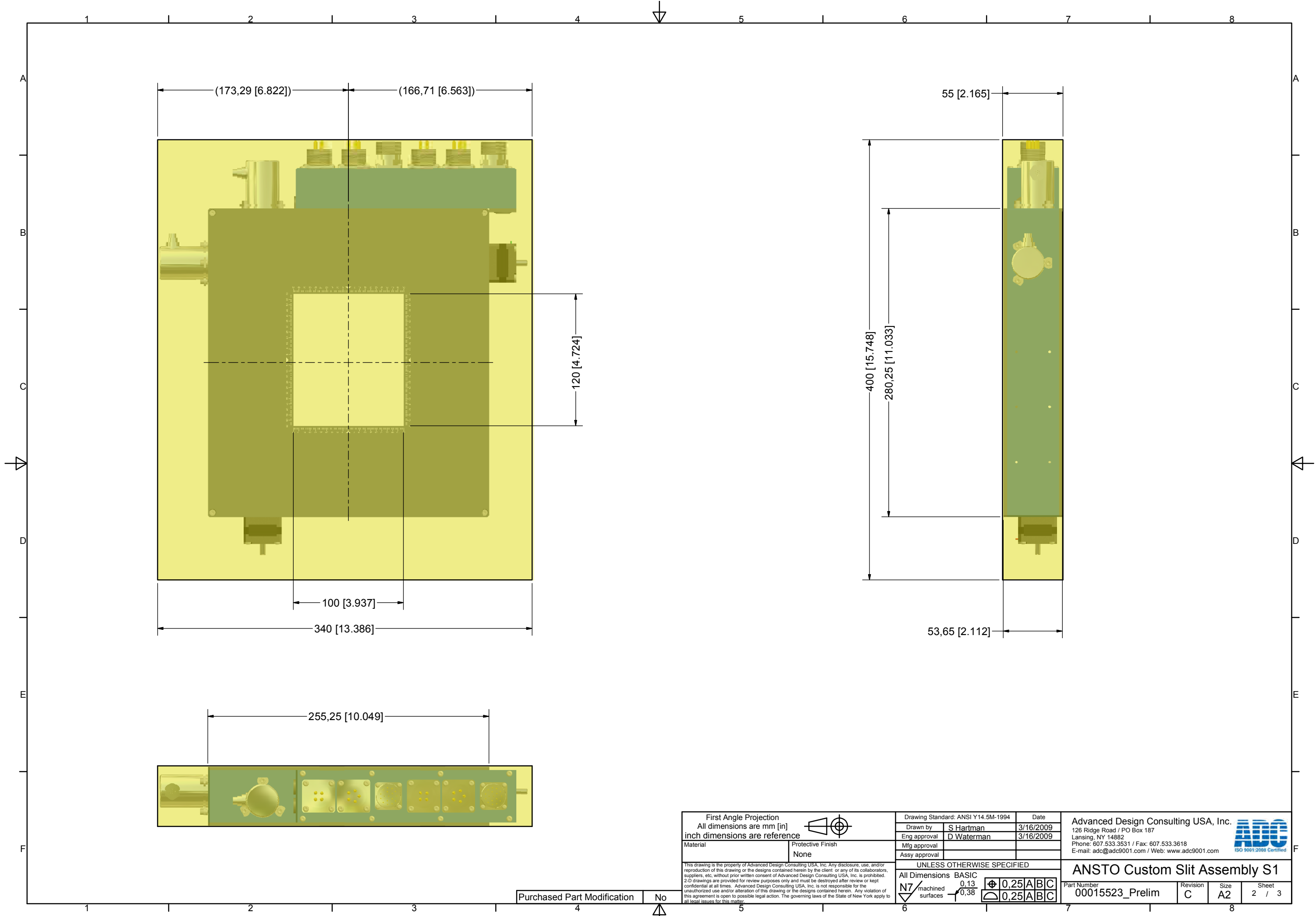
REVISION HISTORY				
ZONE	REV	DESCRIPTION	DATE	APPROVED
n/a	A	Preliminary Release; For Review Only	3/16/2009	S Hartman
all	B	Changed Covers and Connector Mounting	3/19/2009	S Hartman
all	C	Changed Encoder Connectors; Extended Body 5mm To Accommodate Limits	3/30/2009	S Hartman







Customer Specified Space Constraints

S1 Custom Slit Assembly

First Angle Projection All dimensions are mm [in] inch dimensions are reference		Drawing Standard: ANSI Y14.5M-1994		Date
		Drawn by	S Hartman	3/16/2009
Material		Eng approval	D Waterman	3/16/2009
		Mfg approval		
		Assy approval		
Protective Finish None		UNLESS OTHERWISE SPECIFIED		
		All Dimensions BASIC		
Purchased Part Modification		N7 machined surfaces	0.13 0.38	\varnothing 0.25 A B C
				0.25 A B C
No		Advanced Design Consulting USA, Inc. 126 Ridge Road / PO Box 187 Lansing, NY 14882 Phone: 607.533.3531 / Fax: 607.533.3618 E-mail: adc@adc9001.com / Web: www.adc9001.com		ADO ISO 9001:2008 Certified
		ANSTO Custom Slit Assembly S1		
		Part Number	Revision	Size
		00015523_Prelim	C	A2
				Sheet
				1 / 3



First Angle Projection All dimensions are mm [in] inch dimensions are reference			Drawing Standard: ANSI Y14.5M-1994		Date	Advanced Design Consulting USA, Inc. 126 Ridge Road / PO Box 187 Lansing, NY 14882 Phone: 607.533.3531 / Fax: 607.533.3618 E-mail: adc@adc9001.com / Web: www.adc9001.com						
Material	Protective Finish None		Eng approval D Waterman		3/16/2009	Mfg approval		3/16/2009				
		Assy approval										
UNLESS OTHERWISE SPECIFIED												
All Dimensions BASIC			ANST Custom Slit Assembly S1									
N7/machined surfaces			0.13 0.38		 0.25 A B C  0.25 A B C			Part Number 00015523_Prelim		Revision C	Size A2	Sheet 2 / 3

Advanced Design Consulting USA, Inc.
126 Ridge Road / PO Box 187
Lansing, NY 14882
Phone: 607.533.3531 / Fax: 607.533.3618
E-mail: adc@adc9001.com / Web: www.adc9001.com



ANSTO Custom Slit Assembly S1

