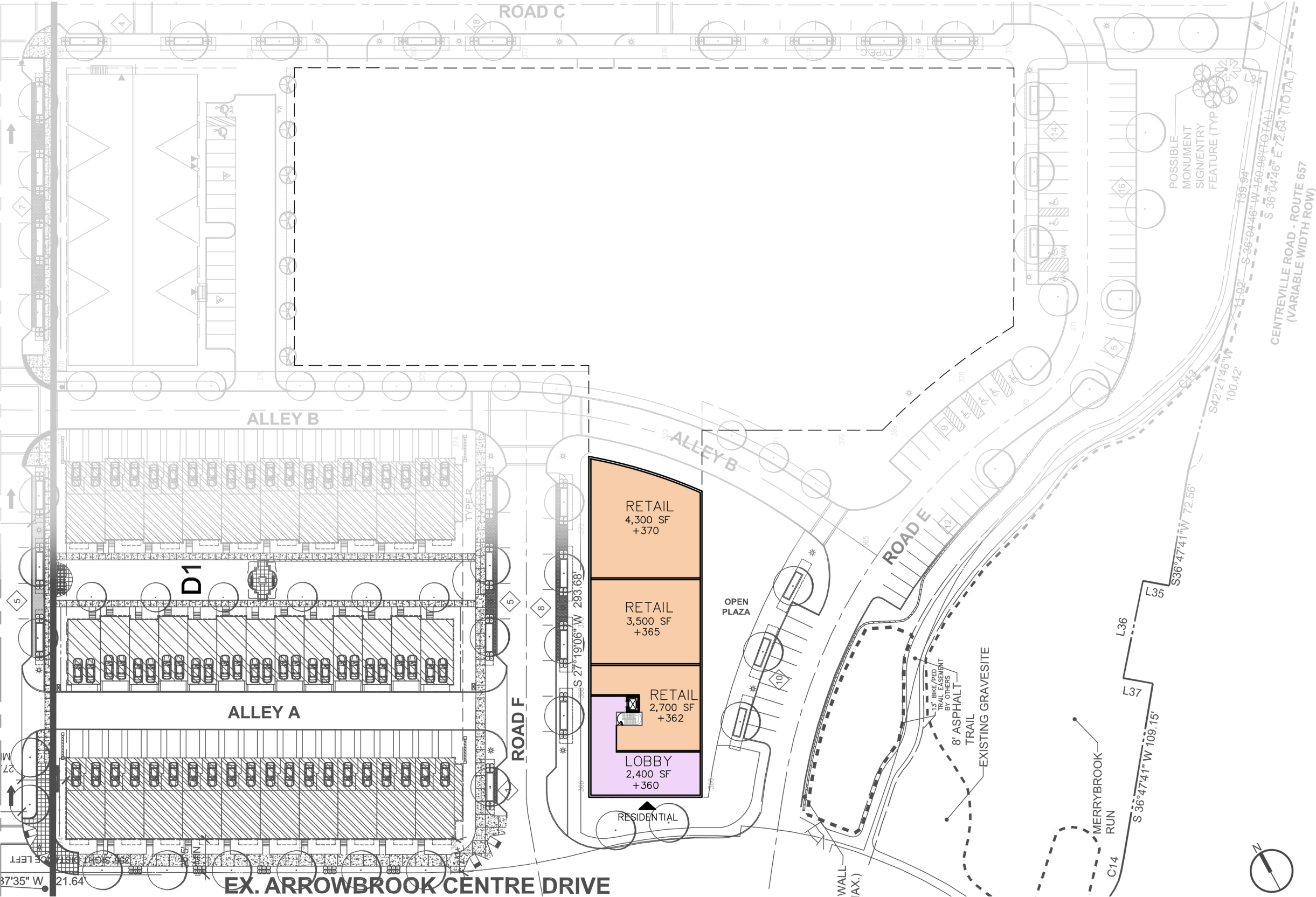




ARROWBROOK CENTRE D2 MULTI-FAMILY RESIDENTIAL

ARROWBROOK CENTRE D2 / D3 MULTI-FAMILY RESIDENTIAL



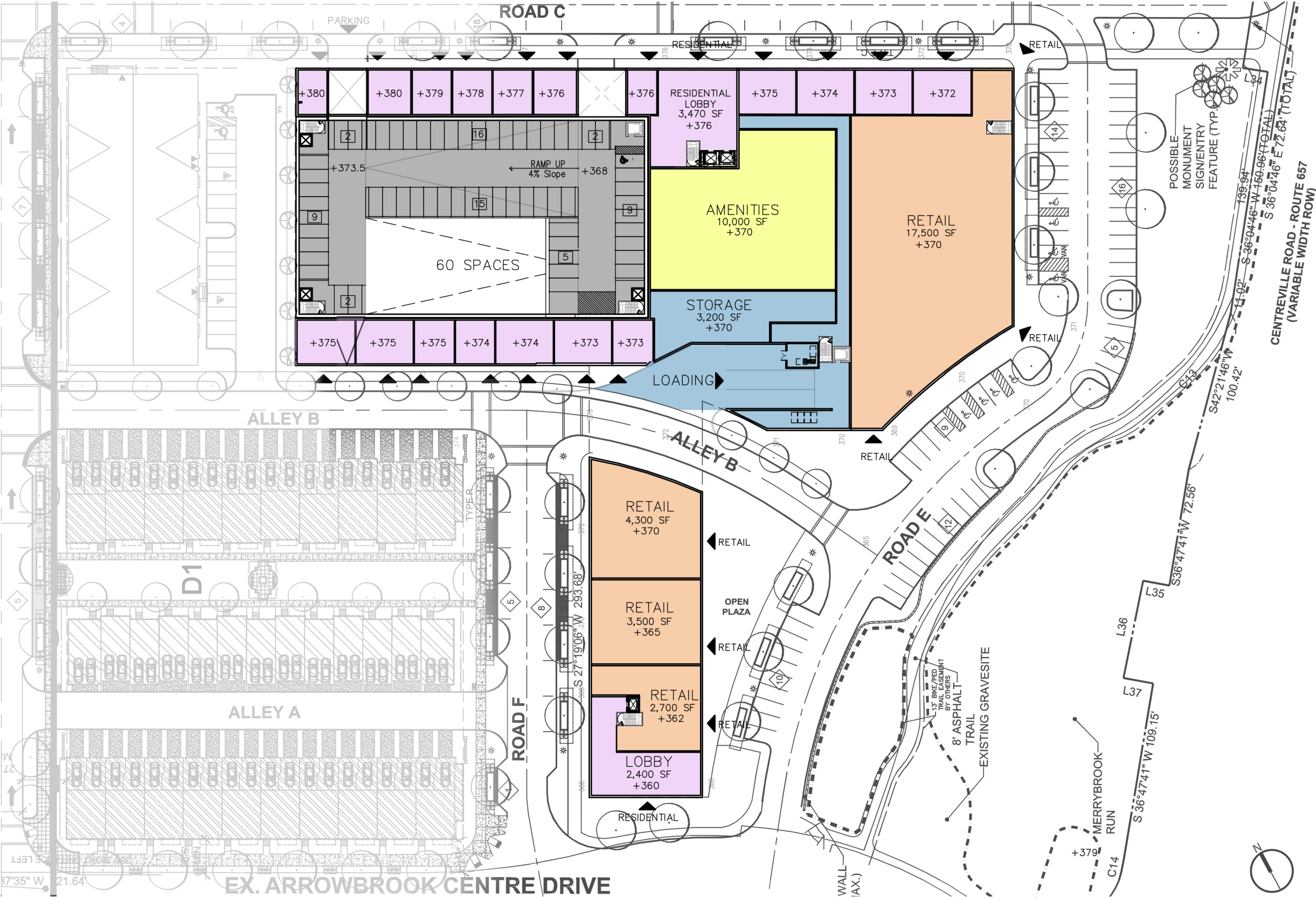
D2 RESIDENTIAL			
FLOOR	RESIDENTIAL (SF)	UNITS (#)	RETAIL (SF)
1 (+370)	37,400	18	28,000
2	-	-	-
3 (+390)	69,750	69	-
4 (+400.66)	69,750	69	-
5 (+411.32)	69,750	69	-
6 (+421.98)	69,750	69	-
7 (+432.64)	69,750	66	-
TOTAL	385,032	360	28,500

D2 PARKING			
FLOOR	PROVIDED	RESIDENTIAL REQ.	RETAIL REQ.
1 (+368)	60	-	-
2 (+379)	81	-	-
3 (+390)	88	-	-
4 (+400.66)	88	-	-
5 (+411.32)	88	-	-
6 (+421.98)	88	-	-
7 (+432.64)	88	-	-
TOTAL	581	486	168
ON GRADE	92	-	-
RESIDENTIAL PARKING REQUIRED:		360 UNITS X 1.35= 486 SPACES	
RESIDENTIAL PARKING PROVIDED:		486 PARKING SPACES	
RETAIL PARKING REQUIRED:		(28,000SF / 1000) X 6 SPACES = 168 SPACES	
RETAIL PARKING PROVIDED:		95 SPACES IN GARAGE + 73 SPACES ON GRADE	
EXCESS PROVIDED PARKING:		19 SPACES ON GRADE	

- AMENITIES
- RESIDENTIAL / LOBBY
- RETAIL
- BLD BOH / SERVICE
- RESIDENTIAL PARKING
- RETAIL PARKING



ARROWBROOK CENTRE D2 / D3 MULTI-FAMILY RESIDENTIAL



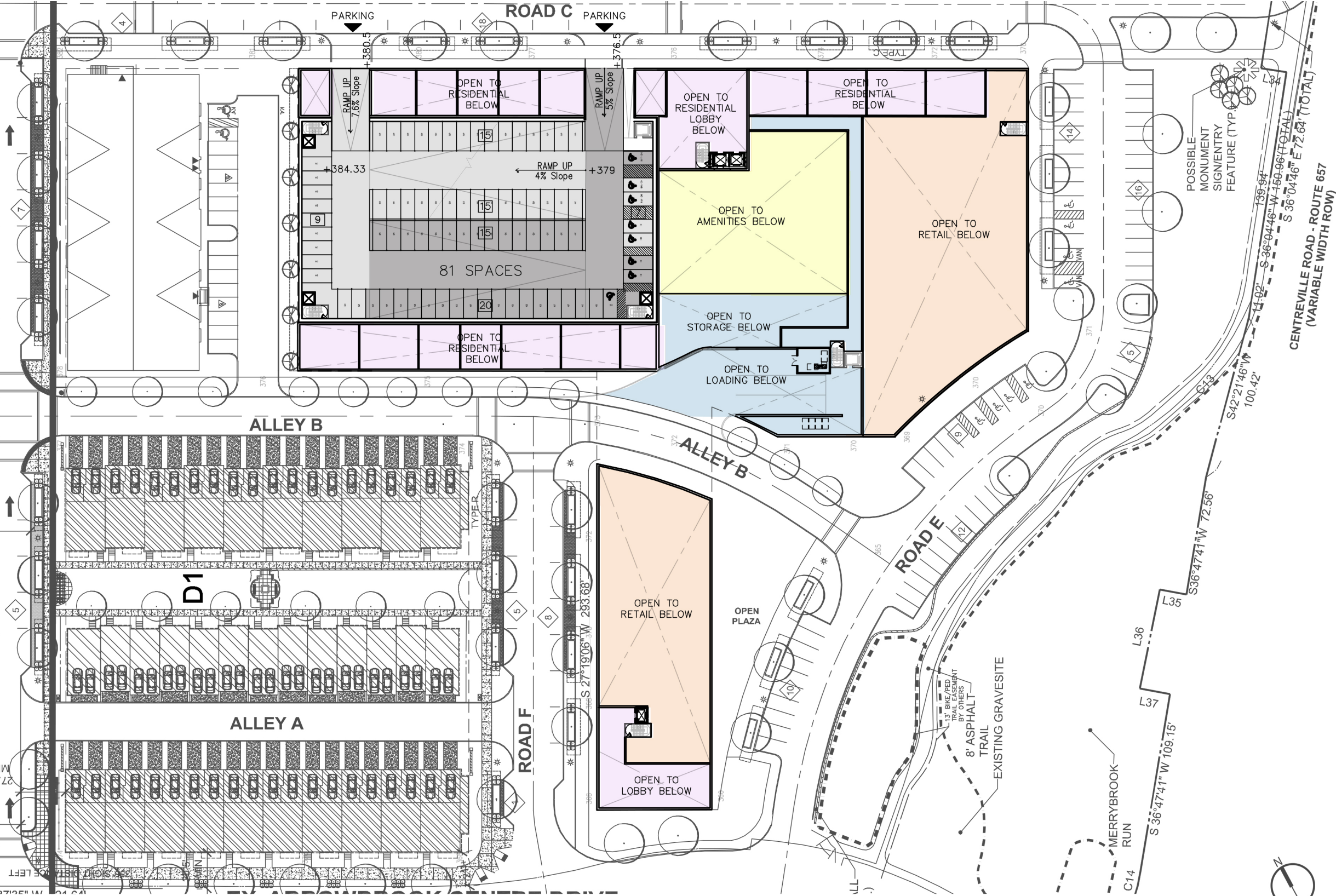
D2 RESIDENTIAL			
FLOOR	RESIDENTIAL (SF)	UNITS (#)	RETAIL (SF)
1 (+370)	37,400	18	28,000
2	-	-	-
3 (+390)	69,750	69	-
4 (+400.66)	69,750	69	-
5 (+411.32)	69,750	69	-
6 (+421.98)	69,750	69	-
7 (+432.64)	69,750	66	-
TOTAL	385,032	360	28,500

D2 PARKING			
FLOOR	PROVIDED	RESIDENTIAL REQ.	RETAIL REQ.
1 (+368)	60	-	-
2 (+379)	81	-	-
3 (+390)	88	-	-
4 (+400.66)	88	-	-
5 (+411.32)	88	-	-
6 (+421.98)	88	-	-
7 (+432.64)	88	-	-
TOTAL	581	486	168
ON GRADE	92	-	-
RESIDENTIAL PARKING REQUIRED: 360 UNITS X 1.35= 486 SPACES RESIDENTIAL PARKING PROVIDED: 486 PARKING SPACES RETAIL PARKING REQUIRED: (28,000SF / 1000) X 6 SPACES = 168 SPACES RETAIL PARKING PROVIDED: 95 SPACES IN GARAGE + 73 SPACES ON GRADE EXCESS PROVIDED PARKING: 19 SPACES ON GRADE			

- AMENITIES
- RESIDENTIAL / LOBBY
- RETAIL
- BLD BOH / SERVICE
- RESIDENTIAL PARKING
- RETAIL PARKING



ARROWBROOK CENTRE D2 / D3 MULTI-FAMILY RESIDENTIAL



D2 RESIDENTIAL			
FLOOR	RESIDENTIAL (SF)	UNITS (#)	RETAIL (SF)
1 (+370)	37,400	18	28,000
2	-	-	-
3 (+390)	69,750	69	-
4 (+400.66)	69,750	69	-
5 (+411.32)	69,750	69	-
6 (+421.98)	69,750	69	-
7 (+432.64)	69,750	66	-
TOTAL	385,032	360	28,500

D2 PARKING			
FLOOR	PROVIDED	RESIDENTIAL REQ.	RETAIL REQ.
1 (+368)	60	-	-
2 (+379)	81	-	-
3 (+390)	88	-	-
4 (+400.66)	88	-	-
5 (+411.32)	88	-	-
6 (+421.98)	88	-	-
7 (+432.64)	88	-	-
TOTAL	581	486	168
ON GRADE	92	-	-

RESIDENTIAL PARKING REQUIRED:

RESIDENTIAL PARKING PROVIDED:

RETAIL PARKING REQUIRED:

RETAIL PARKING PROVIDED:

EXCESS PROVIDED PARKING:

360 UNITS X 1.35= 486 SPACES

486 PARKING SPACES

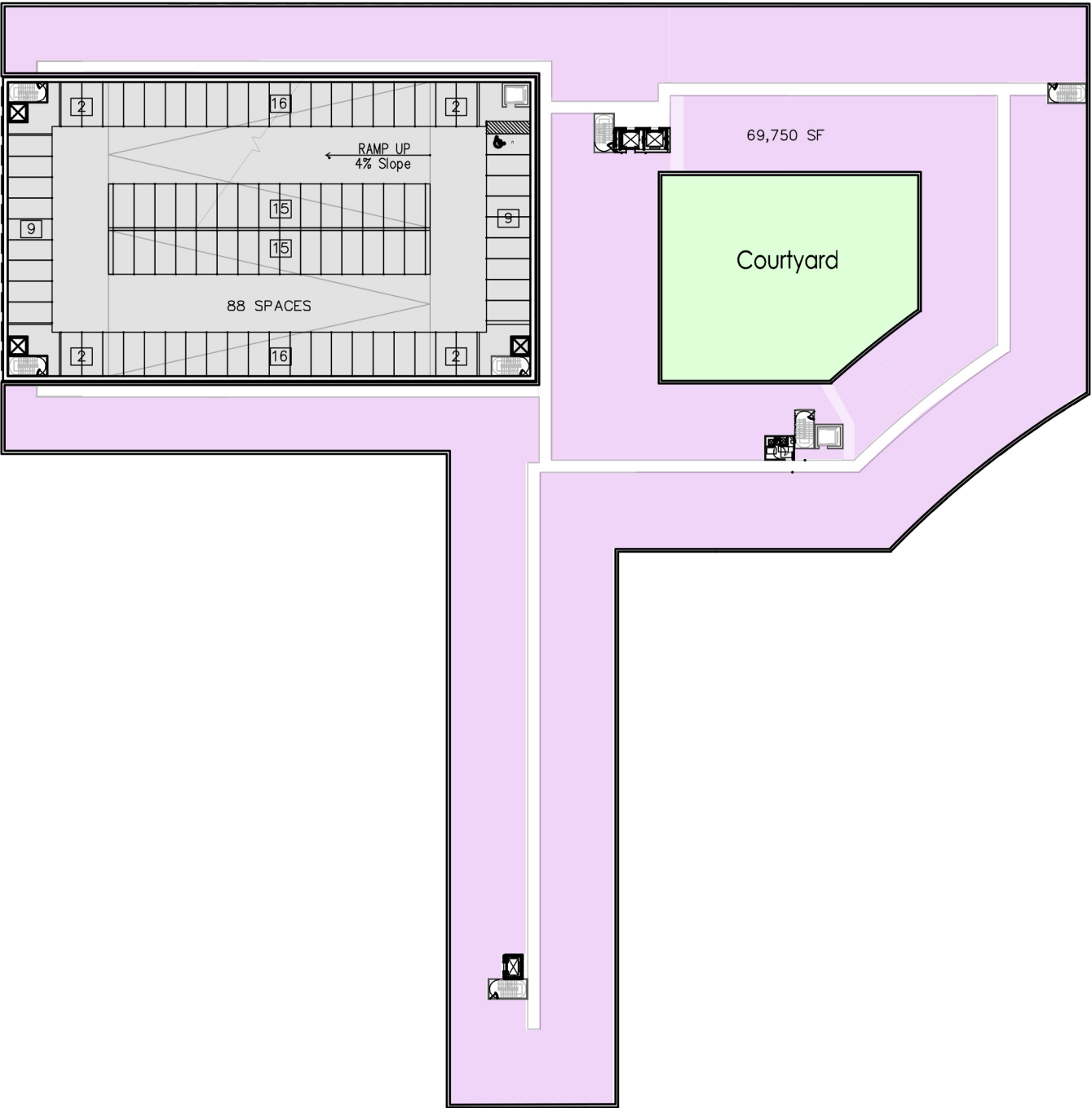
(28,000SF / 1000) X 6 SPACES = 168 SPACES

95 SPACES IN GARAGE + 73 SPACES ON GRADE

19 SPACES ON GRADE

- AMENITIES
- RESIDENTIAL / LOBBY
- RETAIL
- BLD BOH / SERVICE
- RESIDENTIAL PARKING
- RETAIL PARKING



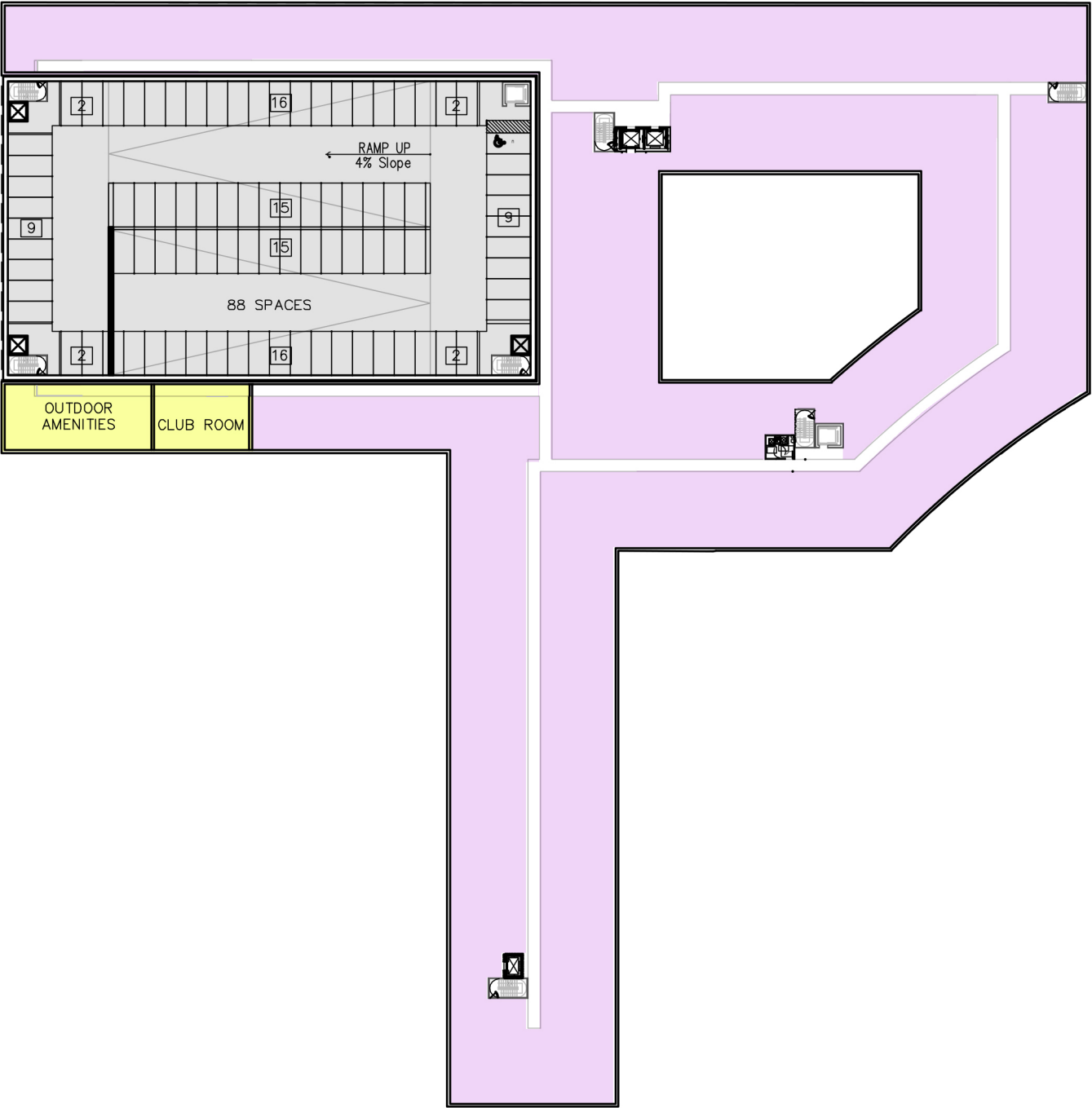


D2 RESIDENTIAL			
FLOOR	RESIDENTIAL (SF)	UNITS (#)	RETAIL (SF)
1 (+370)	37,400	18	28,000
2	-	-	-
3 (+390)	69,750	69	-
4 (+400.66)	69,750	69	-
5 (+411.32)	69,750	69	-
6 (+421.98)	69,750	69	-
7 (+432.64)	69,750	66	-
TOTAL	385,032	360	28,500

D2 PARKING			
FLOOR	PROVIDED	RESIDENTIAL REQ.	RETAIL REQ.
1 (+368)	60	-	-
2 (+379)	81	-	-
3 (+390)	88	-	-
4 (+400.66)	88	-	-
5 (+411.32)	88	-	-
6 (+421.98)	88	-	-
7 (+432.64)	88	-	-
TOTAL	581	486	168
ON GRADE	92	-	-
RESIDENTIAL PARKING REQUIRED: 360 UNITS X 1.35= 486 SPACES RESIDENTIAL PARKING PROVIDED: 486 PARKING SPACES RETAIL PARKING REQUIRED: (28,000SF / 1000) X 6 SPACES = 168 SPACES RETAIL PARKING PROVIDED: 95 SPACES IN GARAGE + 73 SPACES ON GRADE EXCESS PROVIDED PARKING: 19 SPACES ON GRADE			

- AMENITIES
- RESIDENTIAL / LOBBY
- RETAIL
- BLD BOH / SERVICE
- RESIDENTIAL PARKING
- RETAIL PARKING





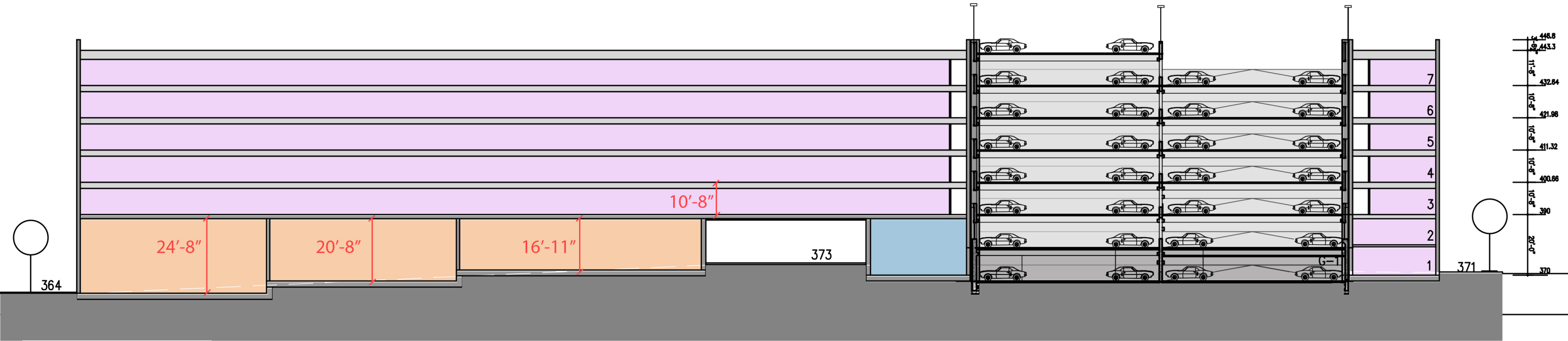
D2 RESIDENTIAL			
FLOOR	RESIDENTIAL (SF)	UNITS (#)	RETAIL (SF)
1 (+370)	37,400	18	28,000
2	-	-	-
3 (+390)	69,750	69	-
4 (+400.66)	69,750	69	-
5 (+411.32)	69,750	69	-
6 (+421.98)	69,750	69	-
7 (+432.64)	69,750	66	-
TOTAL	385,032	360	28,500

D2 PARKING			
FLOOR	PROVIDED	RESIDENTIAL REQ.	RETAIL REQ.
1 (+368)	60	-	-
2 (+379)	81	-	-
3 (+390)	88	-	-
4 (+400.66)	88	-	-
5 (+411.32)	88	-	-
6 (+421.98)	88	-	-
7 (+432.64)	88	-	-
TOTAL	581	486	168
ON GRADE	92	-	-
RESIDENTIAL PARKING REQUIRED: 360 UNITS X 1.35= 486 SPACES			
RESIDENTIAL PARKING PROVIDED: 486 PARKING SPACES			
RETAIL PARKING REQUIRED: (28,000SF / 1000) X 6 SPACES = 168 SPACES			
RETAIL PARKING PROVIDED: 95 SPACES IN GARAGE + 73 SPACES ON GRADE			
EXCESS PROVIDED PARKING: 19 SPACES ON GRADE			

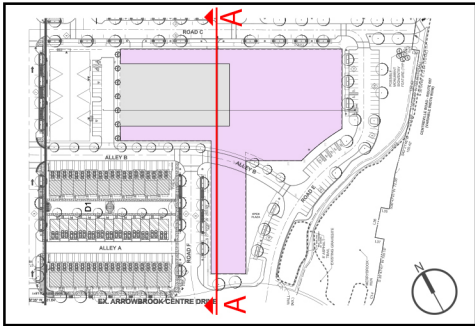
- AMENITIES
- RESIDENTIAL / LOBBY
- RETAIL
- BLD BOH / SERVICE
- RESIDENTIAL PARKING
- RETAIL PARKING



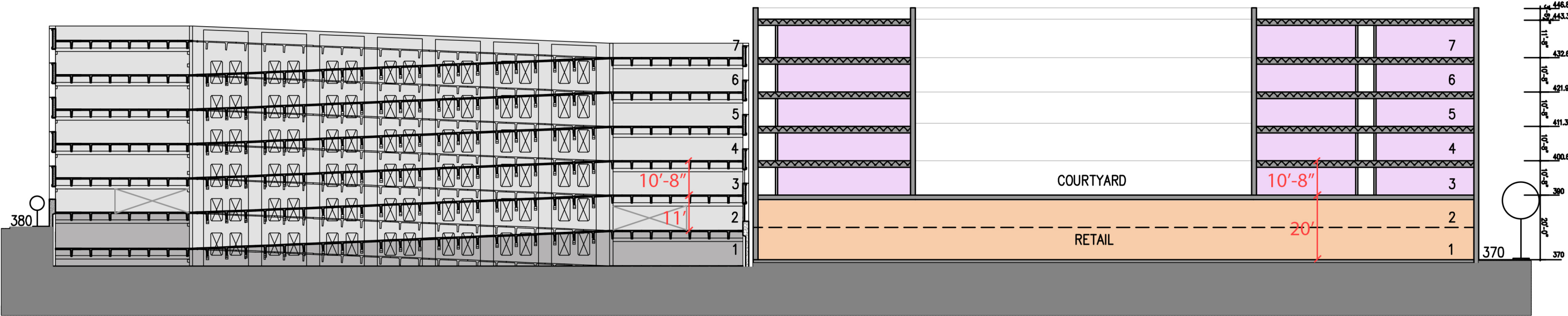




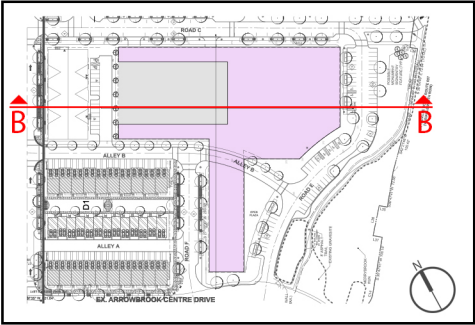
SECTION A



- AMENITIES
- RESIDENTIAL / LOBBY
- RETAIL
- BLD BOH / SERVICE
- RESIDENTIAL PARKING
- RETAIL PARKING



SECTION B



- AMENITIES
- RESIDENTIAL / LOBBY
- RETAIL
- BLD BOH / SERVICE
- RESIDENTIAL PARKING
- RETAIL PARKING