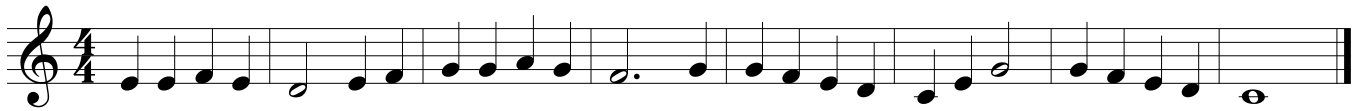


Sight Singing 3 Requirements

Practice examples for students to pass from SS2 to SS3

MELODY: Given a DO pitch, students must sing an eight-bar melody in 4/4 in C Major with solfeg syllables AND hand signs. The melody will start on a pitch other than DO, use quarter, half, dotted-half, and whole note rhythms, and include leaps between do, mi, and so.

PRACTICE EXAMPLES:



RHYTHM: Students must perform an eight-bar rhythm in 4/4 or 3/4 using rhythm syllables (ta, ti-ti, tikka-tikka). Sixteenth, eighth, quarter, half, dotted-half, and whole notes may be used. Quarter, half, and whole rests may be used.

PRACTICE EXAMPLES:

