

SMALL DIAMETER REMOVABLE CORE CAM LOCKS



55803

- Removable core locks allows the core to be removed without having to remove the lock
- Stocked in dull black
- Includes 1-1/4" cam

MFG #	SIZE	KEYWAY	EZ #
55803J353 11A KA560	5/8"	KA 560	074467
55803J353 11A KD	5/8"	KD	074466

SMALL DIAMETER REMOVABLE CORE DRAWER LOCKS



- Removable core locks allows the core to be removed without having to remove the lock
- Stocked in dull black
- Drawer locks are for 15/16" material thicknesses with a 3/8" bolt

MFG #	SIZE	KEYWAY	EZ #
970 353 01KA560	11/16"	KA 560	074465
970 353 01KD	11/16"	KD	074464

DRAWER LOCK



- N54G brass milled key
- 5 disc tumbler plug with 200 combinations
- 5/8" bolt throw
- 1-7/16" hole centres, 2" wide overall
- 7/8" material thickness

MFG #	FINISH	KEYING	EZ #
980 03 51KD	Polished Brass	KD	076174
980 14 11KA560	Bright Nickle	KA 560	074462
980 14 11KA566	Bright Nickle	KA 566	074463
980 14 11KA549	Bright Nickle	KA 549	074461
980 14 11KD	Bright Nickle	KD	074460

FILE CABINET LOCKS



4700



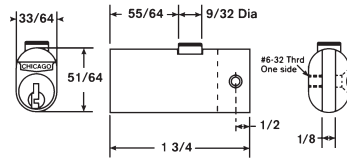
4701

MFG #	KEYING	LENGTH	BOLT	EZ #
4700 14 11KA549	KA 549	1-3/4"	Round	074453
4700 14 11KA560	KA 560	1-3/4"	Round	074454
4700 14 11KA566	KA 566	1-3/4"	Round	074455
4700 14 11KD	KD	1-3/4"	Round	074452
4701 14 11KA549	KA 549	2"	Square	074457
4701 14 11KA560	KA 560	2"	Square	074458
4701 14 11 KA566	KA 566	2"	Square	074459
4701 14 11KD	KD	2"	Square	074456

FILE CABINET LOCKS



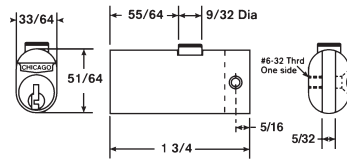
5001



- Four pin tumbler plug
- Die cast barrel with die cast bolt
- Other models have round bolt
- Two keys per lock



5001LP

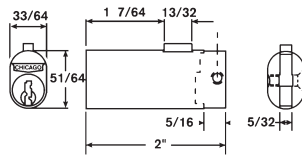


- 5002LP**
- Has rectangular bolt

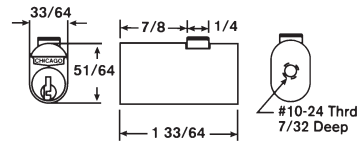
- CEXP19**
- Fireproof
 - Finish: Satin chrome



5002LP



EXP-19DC

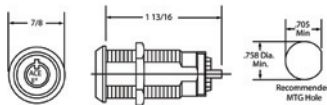


MFG #	LENGTH	BOLT	KEYING	EZ #
C5001 50L KA1X20	1-3/4"	Round	Keyed Alike KA1X20	002529
C5001 50L KD	1-3/4"	Round	Keyed Different	002530
C5001LP KA1X20	1-3/4"	Round	Keyed Alike KA1X20	002527
C5001LP KD	1-3/4"	Round	Keyed Different	002528
C5002LP KD	2"	Square	Keyed Different	002534
C5002LP KA1X20 99332	2"	Square	Keyed Alike KA1X20	026195
CEXP19 KA5X75	1-1/2"	Round	Keyed Alike KA5X75	091429
CEXP19DC KD	1-1/2"	Round	Keyed Different	002418

SINGLE POLE SINGLE THROW SWITCH LOCK



- Ace II® lock assembly
- Off only - momentary
- Contact configuration: SPST
- 7 amps @ 28 VAC / VDC
- Electrical life: 6,000 cycles @ max. load
- Contact resistance: 50 milli ohms initial maximum
- Bright chrome finish
- Two keys per lock
- Master - keying not available

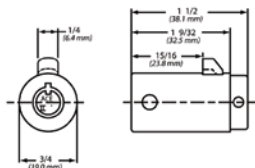


MFG #	EZ #
C4073 70DC KD	074966

"T" HANDLE CYLINDER LOCKS



- 7 pin tumbler Ace II®
- Brass locking bolt
- Set screw hole for anti-pull feature when used in "T" handle with set screw feature
- Standard finish: Chrome
- The "T" handle units both screw-in and cam-latching are available by special order



MFG #	KEYING	EZ #
C425519RL KASP802	Keyed Alike KASP802	077114
C425519RL KD	Keyed Different	002526

C

PIN SLIDING DOOR LOCKS



C8142



C8140

C8142

- For sliding wood doors
- Requires 7/8" diameter hole
- Keys together with pin tumbler locks using D4291 or 1069L key blank

C8140

- For sliding glass doors (showcase)
- Keys together with pin tumbler locks using D4291 or 1069L key blank

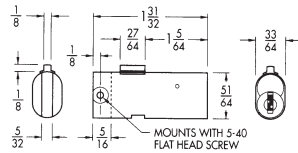
MFG #	TYPE	KEYING	EZ #
C8140 26D KA103	Showcase	KA 103	027243
C8140 26D KD	Showcase	KD	011275
C8142 26D KA103	Wood Doors	KA 103	027245
C8142 26D KD	Wood Doors	KD	011276

C

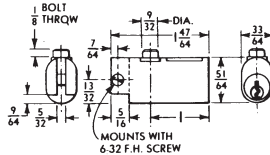
PIN & DISC FILE CABINET LOCKS



C8046



C8150



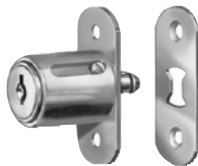
- C8046: Uses 1866-13 key blank
- C8150: Keys together with pin tumbler locks using D4291 or 1069L key blank

MFG #	TYPE	BOLT	KEYING	EZ #
CYLINDER LENGTH: 2"				
C8046KA151MK250	Wafer	Square	KA 151 MK	036829
C8046KA156	Wafer	Square	KA 156 MK	036834
C8046KD MK250	Wafer	Square	KD MK	036828
CYLINDER LENGTH: 1-3/4"				
C8150 26D KD	Pin	Square	KA 103	011282

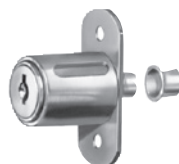
DISC TUMBLER SLIDING WOOD SLIDING DOOR LOCKS



P42051



C8042



C8043

- Requires a 7/8" diameter hole in front door for cylinder
- C8042: Push in cylinder, key turn engages bolt behind strike
- C8043: Pushing in cylinder locks doors, key removable in both locked and unlocked positions
- C8042, C8043 use D8785 or 1069N key blank
- P42051 use 1866-13 key blank

MFG #	TYPE	KEYING	FINISH	EZ #
CYLINDER LENGTH: 7/8"				
P42051KA151	Plunger	KA 151 MK	Chrome	036800
P42051P KA152	Plunger	KA 152 MK	Chrome	036801
P42051P KA153	Plunger	KA 153 MK	Chrome	036802
P42051KA154	Plunger	KA 154 MK	Chrome	036803
P42051P KA155	Plunger	KA 155 MK	Chrome	036804
P42051P KA156	Plunger	KA 156 MK	Chrome	036805
P42051P KD(K02)	Plunger	KD MK	Chrome	036798
C8042 26D KAC189A	90° Turn	KA C189A	Chrome	085386
C8042 26D KD	90° Turn	KD	Chrome	011231
CYLINDER LENGTH: 1"				
C8043 26D KA C415A	Plunger	KA C415A	Chrome	028096
C8043 26D KAC413A	Plunger	KA C413A	Chrome	041654