

THE MAJESTIC

3 Bedrooms / 2 Baths

(Floorplan Shown in Frame Version)

Block: Living Area 1890 sf • Total Area 2604 sf
(Frame elevation not available in all communities.)

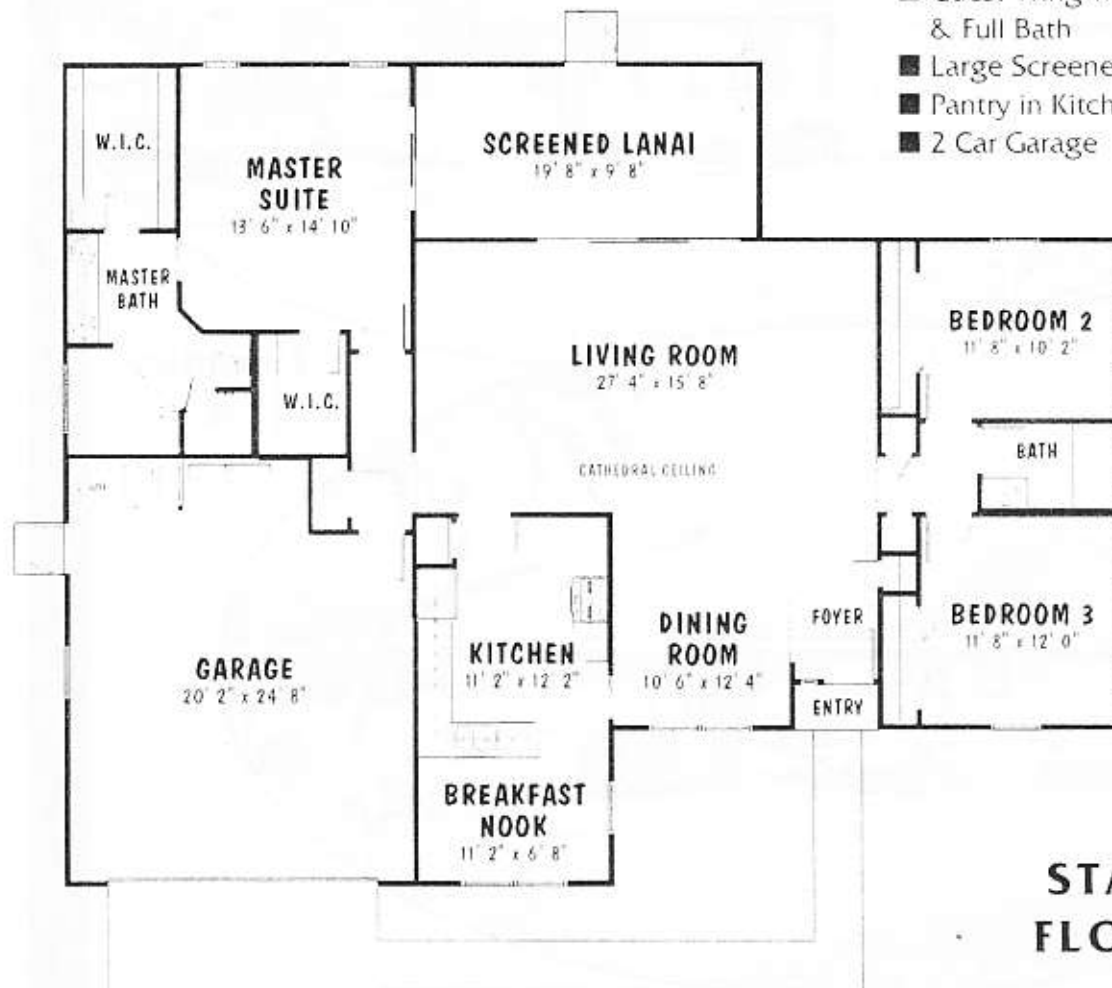
Classic in style and grand in scale, the Majestic offers more than enough space and all the amenities you will need for formal entertaining. It also provides just the right touches for those quieter, more private times.

You'll find a Breakfast Nook and a formal Dining Room just off the Kitchen. The Living Room is spacious and features a cathedral ceiling. The Living Room and the Master Suite open to a large, casual Screened Lanai in the rear.

Finally, the Master Suite offers everything from double walk-in closets to a garden tub and a separate shower.

HIGHLIGHTS

- 3 Bedroom / 2 Bath Split Plan
- Cathedral Ceiling in Living Room
- Large Breakfast Nook & Formal Dining Room
- Two Walk-In Closets, Garden Tub & Double Vanities in Master Suite
- Guest Wing with 2 Bedrooms & Full Bath
- Large Screened Lanai
- Pantry in Kitchen
- 2 Car Garage



STANDARD FLOORPLAN

Pringle Development • So. Hwy. 27, 26600 Ace Ave., Leesburg, FL 34748 • 1 (800) 325-4471 • (352) 365-2303 • www.pringle.com
Pringle Construction Company: CG C056993 Builder of custom homes at Riverside, Scottish Highlands, Highland Lakes, Royal Highlands, Royal Harbor, Legacy of Leesburg and other fine communities.

Because we continually strive to find new ways to improve and change our homes, we reserve the right to change specifications, brands, and architectural details without notice. Dimensions may also vary from those shown in this sales literature and some features depicted may not be included as standard when you buy your home.

