

SALOGA'S RESUBDIVISION

OF LOTS 195, 196, 197 AND 198 OF BLACK WALNUT TRAILS
UNIT NO. 6 BEING A RESUBDIVISION OF PART OF WINDSTONE
UNIT ONE IN THE VILLAGE OF SUGAR GROVE, KANE COUNTY, ILLINOIS.

1999K121025

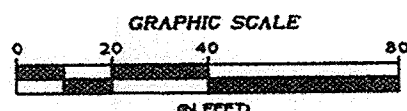
FILED FOR RECORD
KANE COUNTY, ILL.

1999 DEC 27 PM 2:30

Lynda M. Rouse
RECORDER

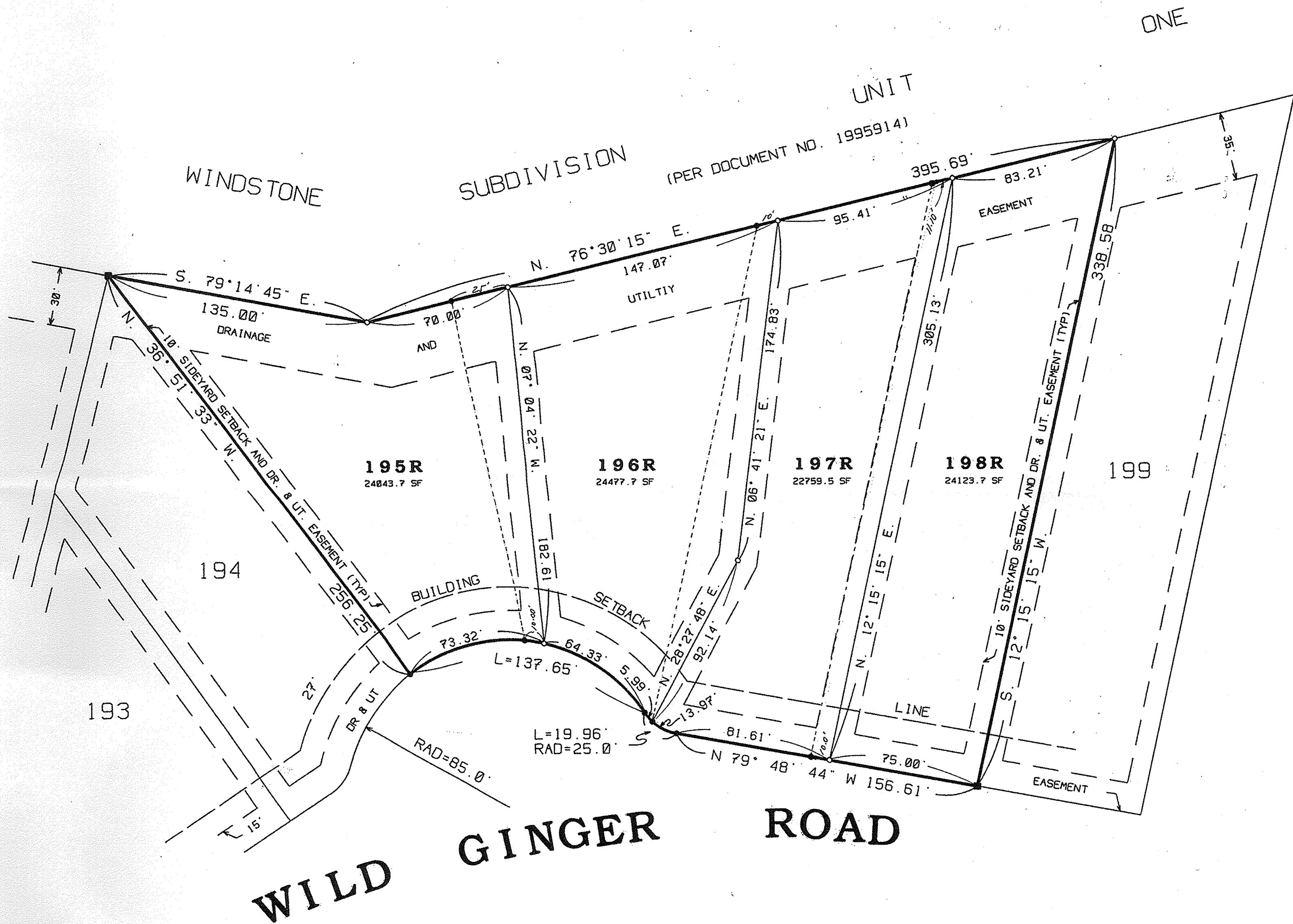


SCALE 1" = 40'



LEGEND

- SET CONCRETE MONUMENT
- SET IRON STAKE
- FOUND IRON STAKE
- OLD LOT LINE



An easement is hereby reserved for and granted to NORTHERN ILLINOIS GAS COMPANY, its successors and assigns ("NI-Gas") to install, operate, maintain, repair, replace and remove, facilities used in connection with the transmission and distribution of natural gas in, over, under, across, along and upon the surface of the property shown on this plat marked "Easement," "Common Area or Areas" and streets and alleys, whether public or private, and the property designated in the Declaration of Condominium and/or on this plat as "Common Elements," together with the right to install required service connections over or under the surface of each lot and Common Area or Areas to serve improvements thereon, or on adjacent lots, and Common Area or Areas, and to serve other property, adjacent or otherwise, and the right to remove obstructions, including but not limited to, trees, bushes, roots and fences, as may be reasonably required incident to the rights herein given, and the right to enter upon the property for all such purposes. Obstructions shall not be placed over NI-Gas' facilities or in, upon or over the property identified on this plat for utility purposes without the prior written consent of NI-Gas. After installation of any such facilities, the grade of the property shall not be altered in a manner so as to interfere with the proper operation and maintenance thereof.

The term "Common Elements" shall have that meaning set forth for such term in Section 605/2(e) of the "Condominium Property Act" (Illinois Compiled Statutes, Ch. 765, Sec. 605/2(e)), as amended from time to time.

The term "Common Area or Areas" is defined as a lot, parcel or area of real property, including real property surfaced with interior driveways and walkways, the beneficial use and enjoyment of which is reserved in whole as an appurtenance to the separately owned lots, parcels or areas within the property, even though such areas may be designated on this plat by other terms.

REVISED NOVEMBER 12, 1999

R.B & ASSOCIATES
4 WEST MAIN STREET
PLANO, ILLINOIS 60545
(630) 552-7452