



COILED TUBING TOOL PRODUCT CATALOG

APRIL 1, 2017



Table of Contents

VLK02 – FIELD SERVICEABLE INTERNAL FRAC CONNECTOR	3
VLK08 – EXTERNAL SLIP CONNECTOR	5
VLK11 – CT STRAIGHT BAR.....	6
VLK12 – SPIRAL JETTING NOZZLE	7
VLK13 – TORQUE LIMITING ROLL ON CONNECTOR.....	8
VLK14 – INTERNAL DIMPLE CONNECTOR	9
VLK15 – FIELD SERVICEABLE TORQUE LIMITING ROLL ON CONNECTOR.....	10
VLK16 – FIELD SERVICEABLE INTERNAL DIMPLE CONNECTOR.....	12
VLK17 – DOUBLE FLAPPER CHECK VALVE	14
VLK18 – REVERSE CIRCULATION JETTING NOZZLE.....	15
VLK19 – BALL CHECK VALVE	16
VLK22 – MULE SHOE NOZZLE.....	17
VLK24 – EXTERNAL DIMPLE CONNECTOR.....	18
VLK24A – EXTERNAL DIMPLE CONNECTOR WITH PROTECTION SLEEVE	19
VLK26 –CT NO GO	20
VLK27 – STATIC PORTED JETTING NOZZLE.....	21
VLK28 – FLUTED CENTRALIZER	22
VLK33 – TUBE X TUBE ROLL ON CONNECTOR.....	23
VLK34 – TORQUE THRU SHEAR CONNECTOR.....	24
VLK35 – CT HANDLING/HANGOFF CLAMP.....	25
VLK36 – SURFACE FILTER.....	26
VLK37 – CHEMICAL INJECTION CHECK VALVE	27
VLK38 – CHEMICAL INJECTION MANDREL.....	28
VLK39 – SHEAR DISCONNECT	29
VLK40 – BOW SPRING CENTRALIZER.....	30
VLK41 – TUBING/CASING SCRAPER	31
VLK45 – CT CROSSOVERS	32
VLK47 – KICK OFF TOOL	33
VLK50 – CT SPIRAL VENTURI TOOL.....	34



Table of Contents cont'd

VLK53 – DOWNHOLE FILTER.....	35
VLK55 – LOCKING SWIVEL/QUICK CONNECT	36
VLK59 – DIRECTIONAL SPIRAL JETTING NOZZLE	37
VLK66 – CT INDEX TOOL.....	38
VLK73 – CT CUP TOOL.....	39
VLK74 – MEMORY GAUGE CARRIER.....	40
DON'T SEE WHAT YOU NEED.....	42
CONTACT INFORMATION.....	43



VLK02 FIELD SERVICEABLE INTERNAL FRAC CONNECTOR

INTERNAL FRAC CONNECTOR – Developed for quick connector replacement for service companies required to change connectors due to seal integrity during large frac jobs. No need to cut tubing just to replace seals. Simply unthread....repack.....go back to work.

Faster coil preparation of seal surface than most other manufacturers resulting in quicker rig up times and better seal quality.

Seals can be removed/replaced in minutes. Reducing valuable rig/operating time replacing connectors. Damaged seals no longer an issue.

One connector only is needed to work with almost all wall thickness of coil. Connector is not dependent on the wall thickness. Seal pack can be interchanged to work with the wall thickness of your tubing.

***Connector is fully field serviceable without removing from coil tubing.**



Field Serviceable – First truly “field serviceable” coiled tubing connector. Design actually allows you to replace the seals of the connector without removing from the tubing.

-ELIMINATE THE NEED TO “REMAKE” CONNECTION IS SEAL FAILURE/DAMAGE
PREVENTS COIL FLUIDS FROM FREEZING DURING CONNECTOR MAKE-UP

-REDUCES SEAL FAILURE (LESS SEAM REMOVAL REQUIRED)

-REDUCES MAKE UP TIME (LESS SEAM REMOVAL REQUIRED)

-REDUCES TUBING CUT OFF IF SEAL FAILURE OCCURS (REDUCE DAMAGE TO CONNECTOR DURING TUBING REMOVAL)

-CONNECTOR SEAL AREA LESS SUSCEPTIBLE TO DAMAGE DURING TUBING REMOVAL (PROLONGS THE LIFE OF THE CONNECTOR)

Compressible Seal Pack – Reduces the need to have “size specific” connectors for each wall size tubing. Also ideal for repetitive high pressure cycles. Uses both internal tubing pressure and external well pressure to aid sealing.

-USE THE SAME CONNECTOR FOR **ALL** WALL SIZE TUBING

-REDUCE INVENTORY BY NOT NEEDING DIFFERENT SIZE CONNECTORS FOR THE SAME SIZE TUBING

-REDUCE FIELD MISTAKES BY HAVING THE WRONG SIZE CONNECTOR

Tubing Removal Slots – Allows cutting tools to remove dimpled tubing from connector easily.

-USE THE SAME CONNECTOR OVER AND OVER WITH LESS DAMAGE FROM TUBING REMOVAL

-DAMAGE OCCURRING FROM CUTTING TOOLS DURING TUBING REMOVAL IS MIMIMIZED AND DOES NOT AFFECT THE SEAL INTEGRITY OF THE CONNECTOR UNLIKE MOST OTHER MANUFACTURERS.



VLK08 EXTERNAL SLIP CONNECTOR

EXTERNAL SLIP CONNECTOR – Tool for standard coiled tubing operations using external mechanical sealing for a “limited restriction” connection.

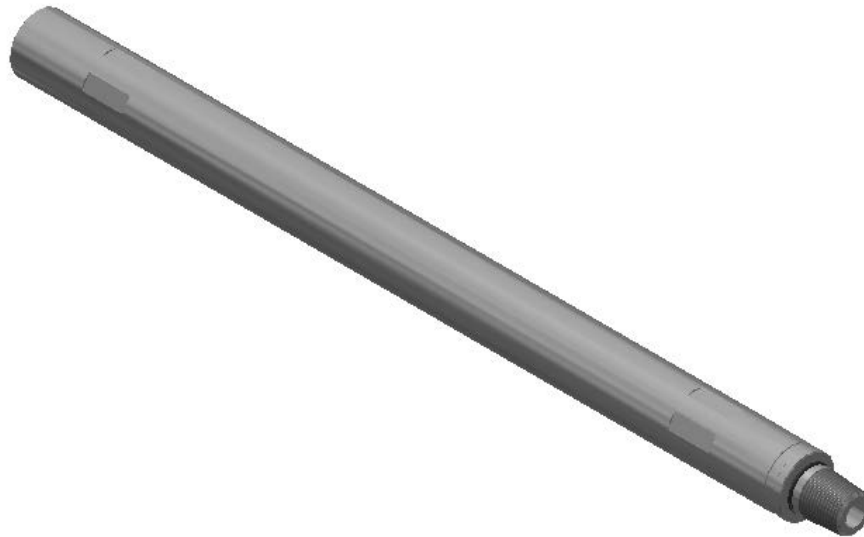
Faster coil preparation of seal surface than most other manufacturers resulting in quicker rig up times and better seal quality.

Seals can be removed/replaced in minutes. Reducing valuable rig/operating time replacing connectors. Damaged seals no longer an issue. Coil tubing freeze up during connector changes eliminated.

***“Sub Saver”** protects bottom sub from abrasive fluid erosion prolonging life of the tool.

***Unique seal design** accommodates coil tubing that is undersize/oversize, oval led, or damaged due to injector marking.

***Connector is fully field serviceable** without removing slips from housing



VLK11 CT STRAIGHT BAR

STRAIGHT BAR – Straight/Extension tool used to go through restrictions where the curvature of coiled tubing may cause hang-ups.

Standard extension lengths are (shoulder to shoulder):

- 12"/24"/36"/48"
- Large bore to reduce flow restrictions
- *Custom lengths may be ordered (extra charges may apply)*



VLK12
SPIRAL JETTING NOZZLE
Patent Pending

SPIRAL JETTING NOZZLE – NON - Rotating jetting nozzle used for standard well cleanouts of sand, scale, wax, and other restrictions affecting well flow.

Pulsating, Spiral jets clean 360 degrees of the inside of tubulars without causing damage.

No rotating parts to stall out, wear out, or require special service to operate. Requires lower pump pressures to achieve full cleanout effects.

Fluid path causes “Spiral” vortex below tool to agitate debris removed from tubular wall which aids in the cleanout.

Interchangeable nozzle head can easily be replaced for different jetting actions or replacement due to fluid erosion.



VLK13 TORQUE LIMITING ROLL ON CONNECTOR

CT ROLL ON CONNECTOR – Coiled Tubing Connector where the coiled tubing is “rolled or pressed” into the grooves of the connector to form a connection able to withstand the pull forces of the tubing. Connector also transmits any torsional (rotation) forces from “downhole” tools to the tubing.

Faster/Safer coil preparation of seal surface than most other manufacturers resulting in quicker rig up times and better seal quality. Available in most coiled tubing sizes depending on required bore diameter. Available standard tool connection threads are AMMT, PAC, REG. Customer specified tool connection threads and wall thicknesses available (extra charges may apply). Also available (and recommended) in tubing x tubing connectors.

Weld Groove – is incorporated into the torsional rigidity of the roll on connection. Small to Medium torsion is applied directly to the tubing through the weld seam. Groove also allows tubing to be cut off connector with less damage. Extending the life of the connector.



VLK14 INTERNAL DIMPLE CONNECTOR

INTERNAL DIMPLE CONNECTOR – Coiled Tubing Connector where the coiled tubing is “dimpled or pressed” into the round dimples of the connector to form a joint able to withstand the pull forces of the tubing. Connector also transmits any torsional (rotation) forces from “downhole” tools to the tubing.

Faster/Safer coil preparation of seal surface than most other manufacturers resulting in quicker rig up times and better seal quality. Available in most coiled tubing sizes depending on required bore diameter. Also available (and recommended) in tubing x tubing connectors.



VLK15 FIELD SERVICEABLE TORQUE LIMITING ROLL ON CONNECTOR

FIELD SERVICEABLE ROLL ON CONNECTOR – Connector allows access to damaged or worn out seal pack in the event of improper installation.

****One connector only is needed to work with almost all wall thickness of coil. Connector is not dependent on the wall thickness. Seal pack can be interchanged to work with the wall thickness of your tubing.**

Faster coil preparation of seal surface than most other manufacturers resulting in quicker rig up times and better seal quality.

Seals can be removed/replaced in minutes. Reducing valuable rig/operating time replacing connectors. Damaged seals no longer an issue.



Field Serviceable – First truly “field serviceable” coiled tubing connector. Design actually allows you to replace the seals of the connector without removing from the tubing.

-ELIMINATE THE NEED TO “REMAKE” CONNECTION IS SEAL FAILURE/DAMAGE

PREVENTS COIL FLUIDS FROM FREEZING DURING CONNECTOR MAKE-UP

-REDUCES SEAL FAILURE (LESS SEAM REMOVAL REQUIRED)

-REDUCES MAKE UP TIME (LESS SEAM REMOVAL REQUIRED)

-REDUCES TUBING CUT OFF IF SEAL FAILURE OCCURS (REDUCE DAMAGE TO CONNECTOR DURING TUBING REMOVAL)

-CONNECTOR SEAL AREA LESS SUSCEPTIBLE TO DAMAGE DURING TUBING REMOVAL (PROLONGS THE LIFE OF THE CONNECTOR)

Compressible Seal Pack – Reduces the need to have “size specific” connectors for each wall size tubing.

-USE THE SAME CONNECTOR FOR **ALL** WALL SIZE TUBING

-REDUCE INVENTORY BY NOT NEEDING DIFFERENT SIZE CONNECTORS FOR THE SAME SIZE TUBING

-REDUCE FIELD MISTAKES BY HAVING THE WRONG SIZE CONNECTOR

-REDUCE CONNECTOR REPLACEMENT DUE TO COIL REMOVAL

**ALSO AVAILABLE IN DIMPLE CONNECTOR. REFER TO PRODUCT VLK16*



VLK16 FIELD SERVICEABLE DIMPLE CONNECTOR

FIELD SERVICEABLE DIMPLE CONNECTOR – Connector allows access to damaged or worn out seal pack in the event of improper installation.

****One connector only is needed to work with almost all wall thickness of coil. Connector is not dependent on the wall thickness. Seal pack can be interchanged to work with the wall thickness of your tubing.**

Faster coil preparation of seal surface than most other manufacturers resulting in quicker rig up times and better seal quality.

Seals can be removed/replaced in minutes. Reducing valuable rig/operating time replacing connectors. Damaged seals no longer an issue.



Field Serviceable – First truly “field serviceable” coiled tubing connector. Design actually allows you to replace the seals of the connector without removing from the tubing.

-ELIMINATE THE NEED TO “REMAKE” CONNECTION IS SEAL FAILURE/DAMAGE

PREVENTS COIL FLUIDS FROM FREEZING DURING CONNECTOR MAKE-UP

-REDUCES SEAL FAILURE (LESS SEAM REMOVAL REQUIRED)

-REDUCES MAKE UP TIME (LESS SEAM REMOVAL REQUIRED)

-REDUCES TUBING CUT OFF IF SEAL FAILURE OCCURS (REDUCE DAMAGE TO CONNECTOR DURING TUBING REMOVAL)

-CONNECTOR SEAL AREA LESS SUSCEPTIBLE TO DAMAGE DURING TUBING REMOVAL (PROLONGS THE LIFE OF THE CONNECTOR)

Compressible Seal Pack – Reduces the need to have “size specific” connectors for each wall size tubing.

-USE THE SAME CONNECTOR FOR **ALL** WALL SIZE TUBING

-REDUCE INVENTORY BY NOT NEEDING DIFFERENT SIZE CONNECTORS FOR THE SAME SIZE TUBING

-REDUCE FIELD MISTAKES BY HAVING THE WRONG SIZE CONNECTOR

-REDUCE CONNECTOR REPLACEMENT DUE TO COIL REMOVAL

-USES SAME DIMPLE JIG/YOLK AS BDK WEATHERFORD CONNECTORS OR CAN BE DESIGNED TO MATCH YOUR EXISTING DIMPLE PATTERN.

**ALSO AVAILABLE IN ROLL ON CONNECTOR. REFER TO PRODUCT VLK15*



VLK17 DOUBLE FLAPPER CHECK VALVE

FLAPPER CHECK VALVE – Cartridges allow easy rebuild of tool and can easily be converted to use ball/dart style checks. Flapper allows passage of ball when using Ball Activated Release Tools.

Flapper design allows maximum fluid flow through tool to reduce pressure drop and maximize tool efficiency further down the string.

Elastomer flapper seat reduces “hammering” to prolong the life of moving parts and ensures sealing at low pressures.

Metal flapper seat increases sealing at high pressures.



VLK18 REVERSE CIRCULATION JETTING NOZZLE

REGULAR JETTING NOZZLE – Non-rotating jetting nozzle used for standard well cleanouts. Ball check valve ensures full flow to exit through jet ports.

REVERSE CIRCULATION – Ball and seat allow full flow area to pass through center of tool when reverse circulating.

- 1/8" NPT ported plugs. Easily and quickly change orifice sizes for jetting force.
- Simple, economic replaceable parts



VLK19 BALL CHECK VALVE

BALL STYLE CHECK VALVE – Simplest of check valves. Ideal for cleanouts when release tools are not used in tool string.

Ball carrier design allows non restricted flow throw tool

Non-metallic ball prolongs life of sealing surfaces increasing reliability of the tool.

Stainless steel internal components are resistant to most chemicals and acids.



VLK22 MULE SHOE NOZZLE

MULE SHOE NOZZLE – Jetting nozzle with slant cut face. Commonly used with rotating tools such as “Kick Off tools” or Indexing tools to provide cleanouts around fish necks.

Available in standard or custom port sizes and configurations.



VLK24 EXTERNAL DIMPLE CONNECTOR

EXTERNAL DIMPLE CONNECTOR – Tool for standard coiled tubing operations using external mechanical sealing for a “limited restriction” connection.

Faster coil preparation of seal surface than most other manufacturers resulting in quicker rig up times and better seal quality.

Seals can be removed/replaced in minutes. Reducing valuable rig/operating time replacing connectors. Damaged seals no longer an issue. Coil tubing freeze up during connector changes eliminated.

***“Sub Saver”** protects bottom sub from abrasive fluid erosion prolonging life of the tool.
***Unique seal design** accommodates coil tubing that is undersize/oversize, oval led, or damaged due to injector marking.

***Connector is fully field serviceable** without removing dimples from coil tubing.



VLK24-A
EXTERNAL DIMPLE CONNECTOR
WITH SCREW PROTECTION SLEEVE

SAME CONNECTOR....EXTRA PROTECTION – With an increase demand of reverse circulation services. This CT connector protects dimple screws from fluid erosion when flowing abrasive fluids down outside of the coiled tubing. Also secures screws from loosening and falling into wellbore due to vibration, improper tightening, or lack of anti-loosening adhesives.



**VLK26
CT NO-GO**

CT NO-GO – Short crossover sub with “External Upset”.

Installed between coiled tubing connector and bottom hole assembly (BHA) when running slim hole (same diameter tool string as coiled tubing). Prevents tool string from entering injector chains when pulling out of the wellhead



VLK27 STATIC PORTED JETTING NOZZLE

PORTED JETTING NOZZLE – Non-rotating jetting nozzle used for standard well cleanouts.

Standard jet port configurations are:

- Blank (use for thread protectors, stabbing darts, or drill the ports you think will work best)
- 90° Tangential Side (Full sideways jetting force)
- 30° Inline Down (Ports in line with tubing centre line)
- 30° Tangential Down (Ports offset from tubing centre line)
- 45° Inline (Ports face up hole to help with debris lift)
- Straight Thru
- *Mule Shoe nozzles available in all standard port configurations (VLK22)*

Customer specified tool connection threads and port configurations available (extra charges may apply).



VLK28 FLUTED CENTRALIZER

FLUTED CENTRALIZER – Solid steel centralizing tool to keep your tool string in the centre of tubing/casing or open hole allowing a more uniform cleanout or easier catch when pulling plugs.

Also used for coiled tubing milling or drilling operations. O.D. is standard casing drift diameters or can be customized to suit application.



VLK33 COILED TUBING “TUBE X TUBE” ROLL ON

CT TUBE X TUBE ROLL ON – Use Tube x Tube connector to join two pieces of tubing together (repair pin hole or crack). Can also be used to join different wall size tubing or even two different sizes tubing.

Faster coil preparation of seal surface than most other manufacturers resulting in quicker rig up times and better seal quality. Available in most coiled tubing sizes depending on required bore diameter.

Also available in Dimple x Dimple Connector



VLK34 TORQUE THRU SHEAR DISCONNECT

TORQUE THRU SHEAR DISCONNECT – Use as a safety joint to release coiled tubing from BHA in the event of getting stuck in the well. Shear pins are installed based on depth and amount of pull available with the coiled tubing. Bottom sub (remaining portion in well) has internal fish neck profile for GS type pulling tool or internal spear.

Rugged spline section capable of handling torque from drill motor and transmit load to coiled tubing.



VLK35 CT HANDLING/HANGOFF CLAMP

CT CLAMP – Used for attaching to “whip end” of coiled tubing for securing and handling. Also used for hanging tools in wellhead during make up of long BHA.

Assembled with heavy duty hinge and hinge bolt.

Available in all sizes coiled tubing.



VLK36 TREATING IRON SURFACE FILTER

SURFACE FILTER – Installed in the “treating iron” or surface pump tubing between the fluid pump and coiled tubing unit. The main purpose of the filter is to prevent any large particles or debris which may be pumped through the coil tubing and into the downhole tools. Micron ratings (particle catch size) can be specified between standard and jetting purpose filters.

Filters are generally installed in 2”-1502 x 5FT tubing joint. Filter insert seals inside hammer union and comes with filter removal bolt. 2”-1502 tubing supplier required for I.D. measurements for correct insert installation.



VLK37 CHEMICAL INJECTION CHECK VALVE

Installed on stainless steel capillary tubing (1/4", 3/8", or 1/2") and placed in well to inject surface chemicals either directly into production tubing (via Chemical Injection Mandrel) or into wellbore.

Check valve can be manually adjusted for cracking pressures from 100-1000 psi.

Constructed of chemical resistant stainless steels.

CONNECTION	MAX. OD	LENGTH
1/4" NPT	0.625"	5.0"



VLK38 CHEMICAL INJECTION MANDREL

Installed in the production tubing string (2 3/8", 2 7/8") and used to anchor capillary tubing for the purpose of chemical injection to prevent corrosion or dissolve asphaltenes, or waxes that would otherwise affect well production.

Removable guards fully protect the check valve assembled to the mandrel when installing tubing.

Machined from high strength alloys or corrosion resistant stainless steels.

Slim design allows installation into smaller casing diameters.

THREAD	MAX. OD	LENGTH
2 3/8" EUE (BXP)	3.475"	18"
2 7/8" EUE (BXP)	3.685"	19.5"



VLK39 SHEAR DISCONNECT

SHEAR DISCONNECT – Use as a safety joint to release coiled tubing from BHA in the event of getting stuck in the well. Shear pins are installed based on depth and amount of pull available with the coiled tubing. Bottom sub (remaining portion in well) has internal fish neck profile for GS type pulling tool or internal spear.

Also available in a “torque thru” tool (see VLK 34)



VLK40 BOW SPRING CENTRALIZER

BOW SPRING CENTRALIZER – Leaf Springs made from tempered spring steel centralize tool string in the centre of tubing/casing or open hole allowing a more uniform cleanout or easier catch when pulling plugs.

Springs collapse to tool O.D. when running tool string through nipple profiles or other completion restrictions. Springs return to full diameter when restriction is passed.



VLK41 CASING SCRAPER

CASING SCRAPER – Sharp edged tube used to push through casing/tubing to remove debris.
Can be attached to bottom of upward facing jetting nozzle to circulate cuttings to surface.
Available in all casing/tubing sizes. Standard thread connection is 1" Sucker Rod thread



VLK45 TOOL THREAD CROSSOVER

CROSSOVER – Used to attach tools with different standard tool joint threads or to upsize/downsize tools within a BHA.

Available in most standard tool joint threads and sizes. Maximum bore allowed through threads.



VLK47 KICK OFF TOOL

“UP TO 360 DEGREE ROTATION” – By setting down on the tool string. The bottom portion of the BHA can be “spun” to provide a full 360 degree cleanout around the top of a plug or fish to increase the chances of removal. Rugged design allows for use in fishing operations.

Available in tool O.D. sizes from 1.500” - 3.125”



VLK50
CT SPIRAL VENTURI TOOL
Patent Pending

“POWERFUL SAND CLEANOUT TOOL” – Using combined technology of the patent pending Directional Spiral Jet Nozzle (VLK59) and powerful downhole venturi jet pumps to break up and “vacuum” sand bridges and plugged liners which may be slowing down well production.

The CT Spiral Venturi Tool is a patent pending product developed together with Oil & Gas Tech Enterprises (Netherlands) for removal of sand in wells primarily located in South America, having the rights to commercialize it on behalf of Oil & Gas Tech Enterprises in certain countries. Using concentric coiled tubing to supply drive fluid to the tool and flow the returns back to surface.

Unlike other tools of similar nature. The CT Spiral Venturi Tool can be fitted with any standard coiled tubing tool below the suction head to perform regular coiled tubing services without having to make an extra trip into the well.

Please contact Volkren if you would be interested in using the CT Spiral Venturi Tool in your region.

Currently only available for 1 ¼” x 2 3/8” concentric coil tubing.



VLK53 DOWNHOLE FILTER

“KEEP CLEANING....LONGER” – When using jetting or other downhole tools that are adversely affected by debris in the pump fluid. You want to catch as much debris as possible to prevent plugging. Used in combination with surface filters (VLK36). A downhole filter is your last chance to catch fluid debris.

Available in tool O.D. sizes from 1 1/2” – 3 1/8” with screen opening sizes as little as 0.020” (500 micron)



VLK55 LOCKING SWIVEL/QUICK CONNECT

“STAB...SWIVEL...LOCK” – When making up long tool string assemblies in the wellhead. It is undesirable to turn the entire bottom BHA to make up the top connection. The locking swivel uses a “quick union” nut to quickly make up the top connection without having to spin any tools. An internal spline prevents rotation from upper and lower BHA assemblies.

Also available in a non-locking configuration if tool rotation is necessary.

Available in tool O.D. sizes from 2.125” - 3.125”



VLK59
DIRECTIONAL SPIRAL JET NOZZLE
Patent Pending

“DOWN JET...SHIFT...UP JET” – Now you can selectively choose the direction you want to jet. Use the strong effective downward spiral jet for breaking through sand bridges and cleaning. Then use pump pressure to switch jet directions and jet upwards through 3 large ports for maximum uplift of particles to surface.

Available in tool O.D. sizes from 1.750” - 3.125”



VLK66 CT INDEX TOOL

“UP TO 360 DEGREE ROTATION” – Similar to a Kick Off Tool. The bottom portion of the BHA can be “spun” using tool pressure instead of set down weight to provide a full 360 degree cleanout around the top of a plug or fish to increase the chances of removal. Rugged design allows for use in fishing operations.

Or with a simple modification. The tool can be used as a rotating wash nozzle assembly to continuously provide a 360 degree cleaning.

Available in tool O.D. sizes from 2.125” - 3.125”

Rotation pressure required can be adjusted by changing fluid restriction below the index head or simply by adding a ported NPT into the index head itself.

*Cannot withstand excessive pull loads or “jarring”. Please contact if this is necessary.



VLK73 CT CUP TOOL

CT CUP TOOL – Simple Cup/Cup tool still has a use.

Cup/Cup tool can easily be converted to accommodate many cup configurations. Flow diverter mandrel can handle small to medium frac jobs. Contact us if you have a need for larger jobs.

Comes with shear release joint and circulation port if needed to circulate fluid above the top cup section. Cup spacing is adjusted by placing standard tubing joints above diverter mandrel.

Available in 4 ½", 5 ½", 7" casing sizes.



VLK74 MEMORY GAUGE CARRIER

“DEPLOY UP TO 4 RECORDERS ON A SINGLE CARRIER” – Record well pressure and temperature continuously throughout your well service operation. Or log a well using your coiled tubing.

Carrier can accommodate 1/2” – 3/4” diameter memory gauges depending on tool size.

Available in tool O.D. sizes from 1.500” - 3.125”

Running a different information recording tool? Contact us to see other carrier options.



DON'T SEE A PRODUCT YOU NEED IN THIS CATALOG?

We may or may not be currently designing and developing the tool you need.

- Knuckle Joints (Rotating and Non-Rotating)
- Ball Operated Release Tools
- Ball/Pressure Activated Circulation Subs
- Pressure Assist Shear Subs
- Flow Release Pulling Tools

Volkren also has great relations and works with a wide variety of 3rd party tool suppliers to make sure our customers' tool needs are met.

3rd Party Tools include but are not limited to the following:

- Drill Motors
- Mills
- Ball Operated Release Tools
- Fishing tools (Jars, Accelerators, Spears/Overshots)

HAVE A CUSTOM APPLICATION BUT DON'T HAVE THE TOOL FOR THE JOB?

The Volkren design team specializes in "build to suit" applications. If a current tool is not available or working exactly the way you need it to. We can custom design a solution to make your service a success.

Most tools are available in all coiled tubing sizes (1 1/4" and up). Available standard tool connection threads are AMMT, PAC, REG. Customer specified tool connection threads available (extra charges may apply).

Most tools are designed to meet NACE requirements for light/medium sour service duty.

*Manufactured from high strength alloy materials capable of full coil tubing tensile pull (based on 90 Grade CT). **Not mild steel that met coiled tubing strengths from the 1980's.** All VLK tools pressure tested at 10,000 psi (70 MPa).*

Tool I.D. based on minimum Design Safety Factor of 1.2 and/or maximum bore through thread connection.

Pull Rating based on tool design only and ideal physical connection to tubing.

Custom I.D. and thread connections may ordered and tool pull rating lowered.



“Achieving success.....by making successful customers”

VOLKREN CONSULTING INC.

Calgary, Alberta, Canada

www.volkrenconsulting.ca

scott@volkrenconsulting.ca

587-777-8213