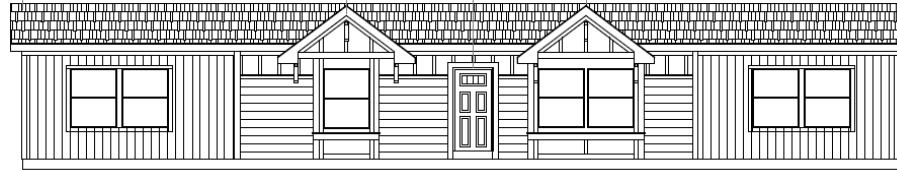


Featuring Homes Built By:



Weiser, ID

# Mountain West SERIES



Optional Mt West exterior



## **Construction**

Detachable Hitch  
Recessed Frame  
2 X 6 Floor Joists 16" OC  
19/32" T&G OSB Decking  
2 X 4 Exterior Walls 16" OC  
2x4 Interior Walls 24" o.c.  
8'6" Sidewall Height w/ Flat Ceiling  
20# Roof Load  
N3:12 Roof Pitch  
Double Marriage Wall Construction  
Concealed Ridge beam  
R-28 Ceiling Insulation  
R-22 Floor Insulation  
R-11 Wall Insulation  
Mountain West Estates Standard Dormer  
Front - 12" Eaves (Nominal)  
Rear - 12" Eaves (Nominal)

## **Baths**

1 pc.Tub/Shower Combo- Master & Hall Bath  
Satin Nickel Towel & Tissue Holders  
36" Lavy Height- Master Bath / 32" in Guest Bath  
Elongated Toilets in both baths  
Bath Vent Fans w/ Lights in both baths  
Vanity Mirror w/Flat Stile Frame  
Single Lever Faucets T/O  
Double China sink in Master Bath

## **Exterior**

3-Tab Shingles  
PlyCem Panel Vertical Siding with Housewrap  
Exterior Window Trim  
Full End Wall Close-up  
8" (nominal) Eave Fascia  
Wood Soffit & Facia  
Front Door- 36" Fiberglass Mission  
Rear Door - 32" Fiberglass w/Peep  
Vinyl Low-E Insulated Windows

## **Interior**

4046 Cove Moulding T/O  
Toe Kick Registers in Kit. and Baths  
Skip Troweled Ceiling Finish  
FLAT Interior Paint  
1/2" T&T w/rounded Corners T/O  
Wire Ventilated Closet Shelving  
2 Panel White Int Doors-(36"Living Areas)  
356 Door Moulding  
356 Window Moulding  
356 Base Moulding Throughout  
Linoleum in Wet Areas  
Simply Stated Carpet  
3/8" 5# Rebond Pad  
Metal Mini-blinds T/O  
Lino in Entry Way

## **Kitchen**

18 CF Refrigerator  
Deluxe Electric Range  
30" Range Hood w/Fan and Light  
Bank of Drawers in Kitchen  
Adjustable Overhead Shelves  
Laminate Countertop & Crescent Edging  
6" Ceramic Backsplash --Kit. and Baths  
Stainless Steel Kitchen Sink  
Single Lever Faucet w/Sprayer  
30" Door w/Cubby Overhead Cabinets  
Raised Panel "Courtyard Birch" MDF Cabinets  
Cabinet Over Refer  
Crown Molding over Kitchen Cabinets  
Metal Drawer Guides

## **Electrical**

200 AMP Panel Box  
Satin Nickel Ceiling Lights  
Prep for Washer/Dryer-ELEC  
Shelf Over Washer / Dryer  
Toggle Light Switches  
Water Shut-off Valves T/O  
Black Porch Light- Front & Rear  
Furnace - Standard Electric  
30 Gallon Elec Water Heater  
Exterior GFI Receptacle  
Prep For Paddle Fan In Living Room

Effective: 1/1/17  
Revised: 1/11/17

Featuring Homes Built By:



Weiser, ID

# Mountain West SERIES

CHAMPION®

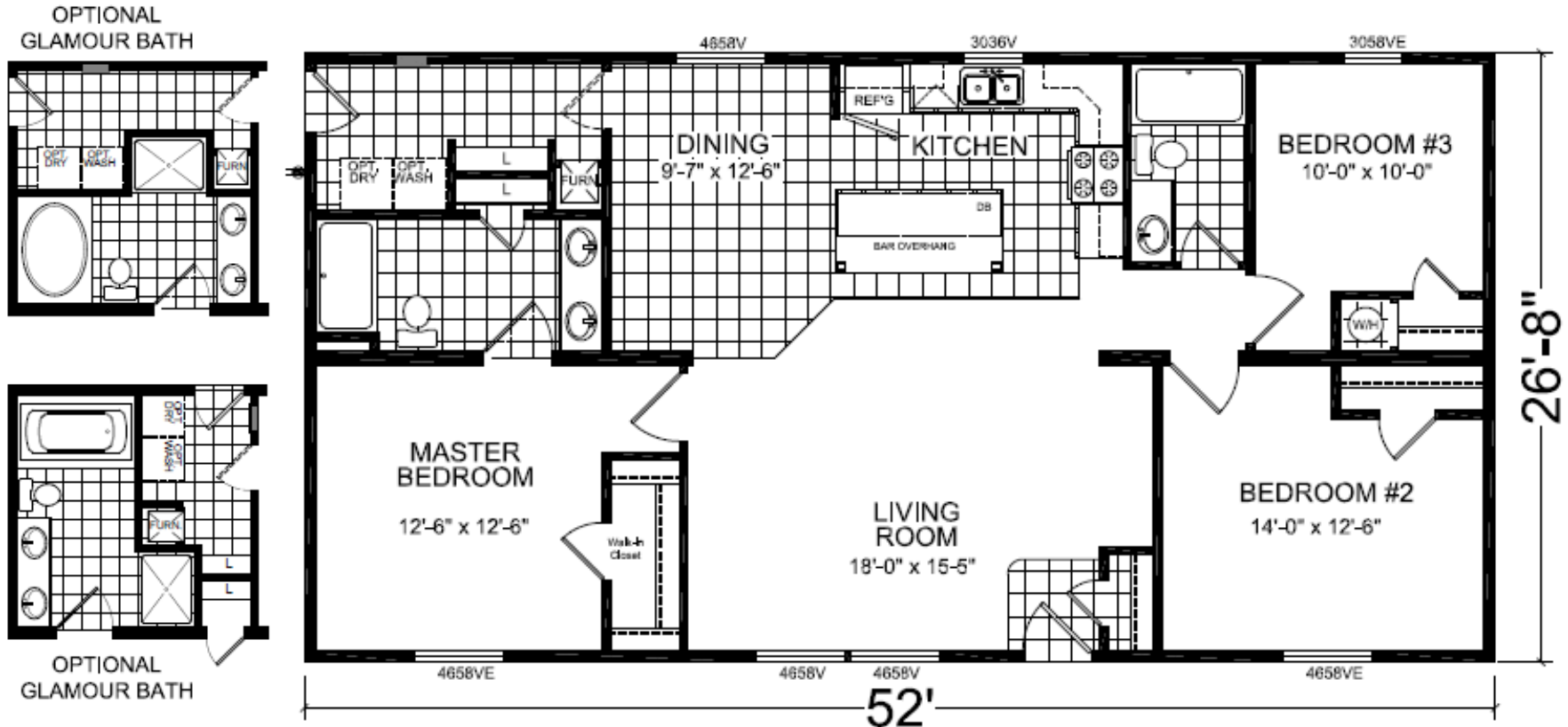
MANUFACTURED BEAUTIFULLY™

**MODEL 17-4523B**

3 BEDROOM, 2 BATH

ACTUAL SIZE: 52' X 26'8"

TOTAL AREA: 1,387 SQ. FT.



Due to continuous product development and improvement, prices, specifications and materials are subject to change without notice or obligation. Square footage and other dimensions are approximate. Images such as rendering, photos and floor plans may be shown with optional features and/or third-party additions that may not be available in all regions.

Featuring Homes Built By:



Weiser, ID

# Mountain West SERIES

CHAMPION<sup>®</sup>

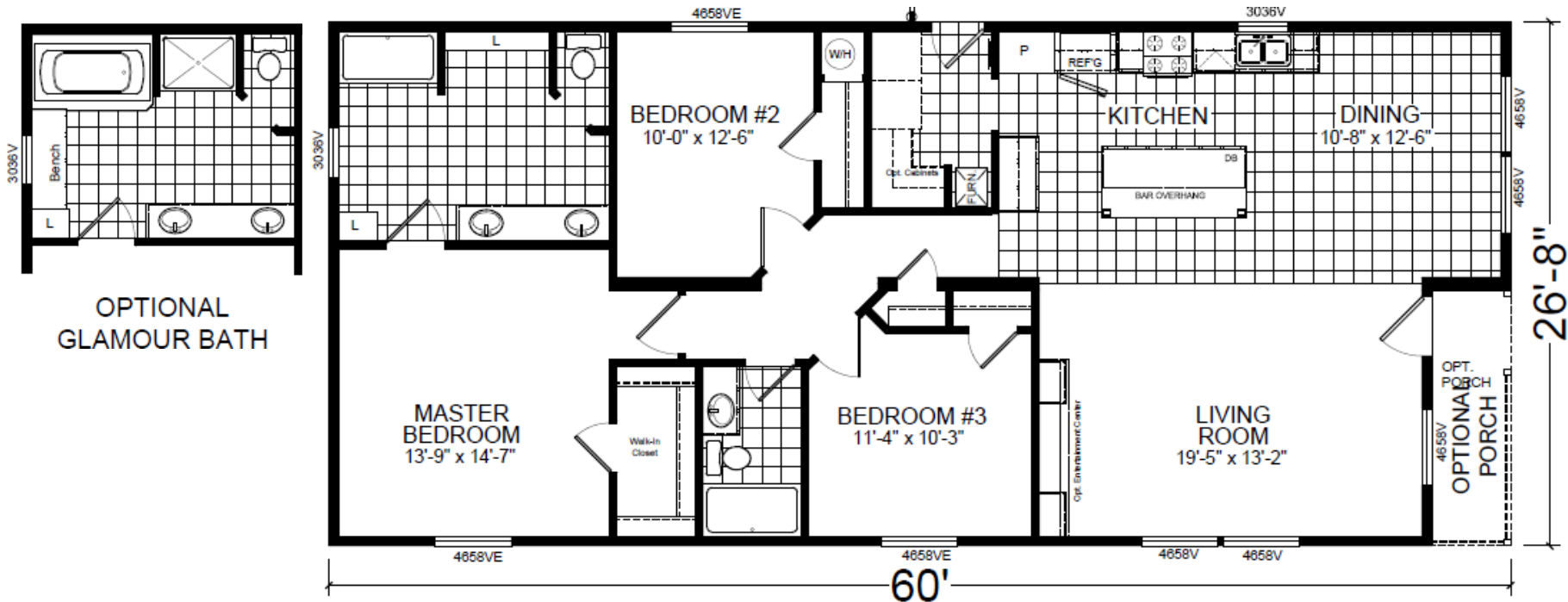
MANUFACTURED BEAUTIFULLY™

## MODEL 17-4603D

3 BEDROOM, 2 BATH

ACTUAL SIZE: 60' X 26'8"

TOTAL AREA: 1,600 SQ. FT.



Due to continuous product development and improvement, prices, specifications and materials are subject to change without notice or obligation. Square footage and other dimensions are approximate. Images such as rendering, photos and floor plans may be shown with optional features and/or third-party additions that may not be available in all regions.

Featuring Homes Built By:



Weiser, ID

# Mountain West SERIES

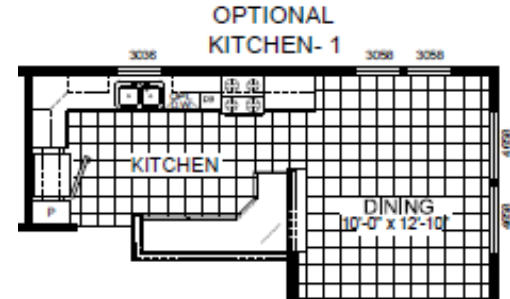
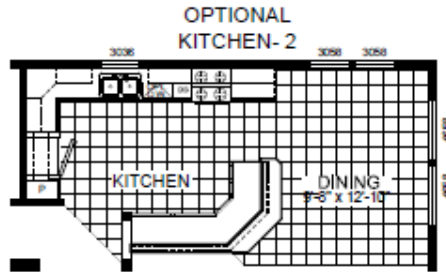


## MODEL 17-4603L

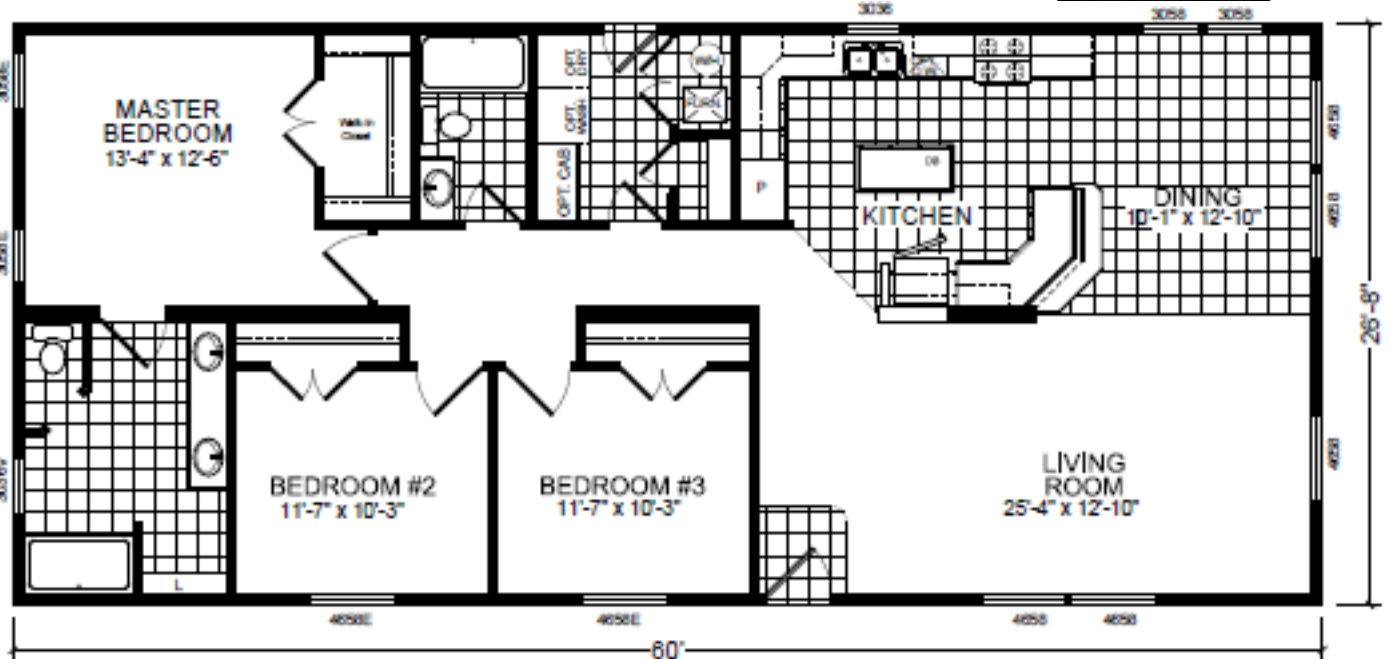
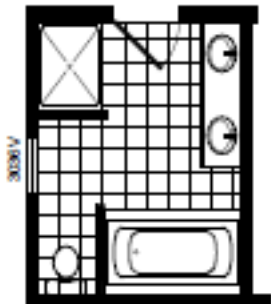
3 BEDROOM, 2 BATH

ACTUAL SIZE: 60' X 26'8"

TOTAL AREA: 1,600 SQ. FT.



### OPTIONAL GLAMOUR BATH



Due to continuous product development and improvement, prices, specifications and materials are subject to change without notice or obligation. Square footage and other dimensions are approximate. Images such as rendering, photos and floor plans may be shown with optional features and/or third-party additions that may not be available in all regions.

Featuring Homes Built By:



Weiser, ID

# Mountain West SERIES

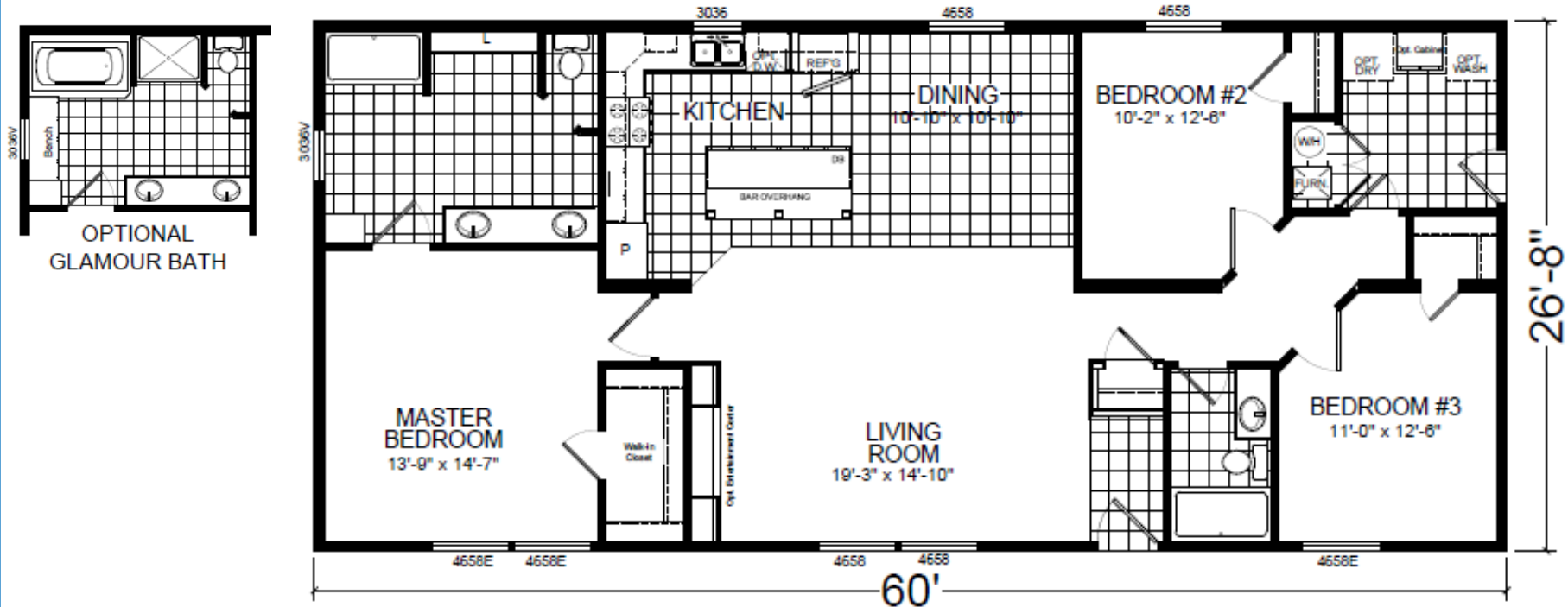


## MODEL 17-4603U

3 BEDROOM, 2 BATH

ACTUAL SIZE: 60' X 26'8"

TOTAL AREA: 1,600 SQ. FT.



Due to continuous product development and improvement, prices, specifications and materials are subject to change without notice or obligation. Square footage and other dimensions are approximate. Images such as rendering, photos and floor plans may be shown with optional features and/or third-party additions that may not be available in all regions.

Featuring Homes Built By:



Weiser, ID

# Mountain West SERIES

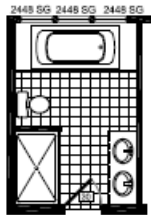
CHAMPION<sup>®</sup>  
MANUFACTURED BEAUTIFULLY<sup>™</sup>

## MODEL 17-4623M

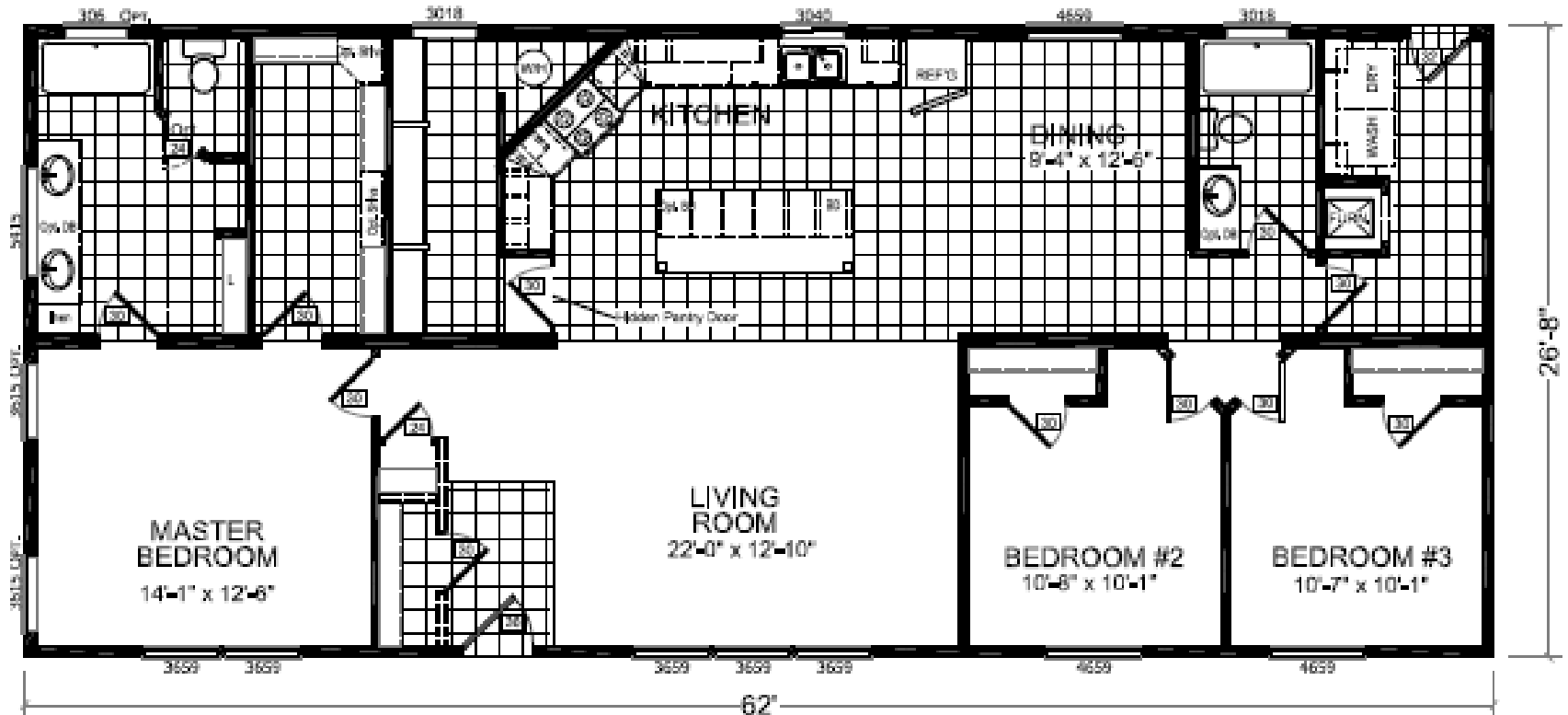
3 BEDROOM, 2 BATH

ACTUAL SIZE: 62' X 06'8"

TOTAL AREA: 1,653 SQ. FT.



OPTIONAL  
GLAMOUR BATH  
(72" Tub)



Due to continuous product development and improvement, prices, specifications and materials are subject to change without notice or obligation. Square footage and other dimensions are approximate. Images such as rendering, photos and floor plans may be shown with optional features and/or third-party additions that may not be available in all regions.

Featuring Homes Built By:



# Mountain West SERIES



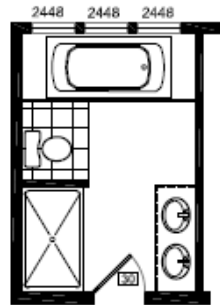
Weiser, ID

## MODEL 17-4663M

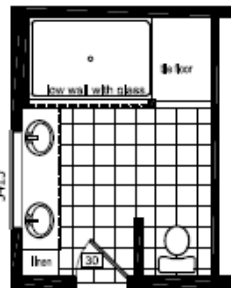
3 BEDROOM, 2 BATH

ACTUAL SIZE: 26'-8" X 66'

TOTAL AREA: 1,760 SQ. FT.



Optional  
Glamour Bath



Optional  
Walk-in Shower



Due to continuous product development and improvement, prices, specifications and materials are subject to change without notice or obligation. Square footage and other dimensions are approximate. Images such as rendering, photos and floor plans may be shown with optional features and/or third-party additions that may not be available in all regions.

Featuring Homes Built By:



Weiser, ID

# Mountain West SERIES



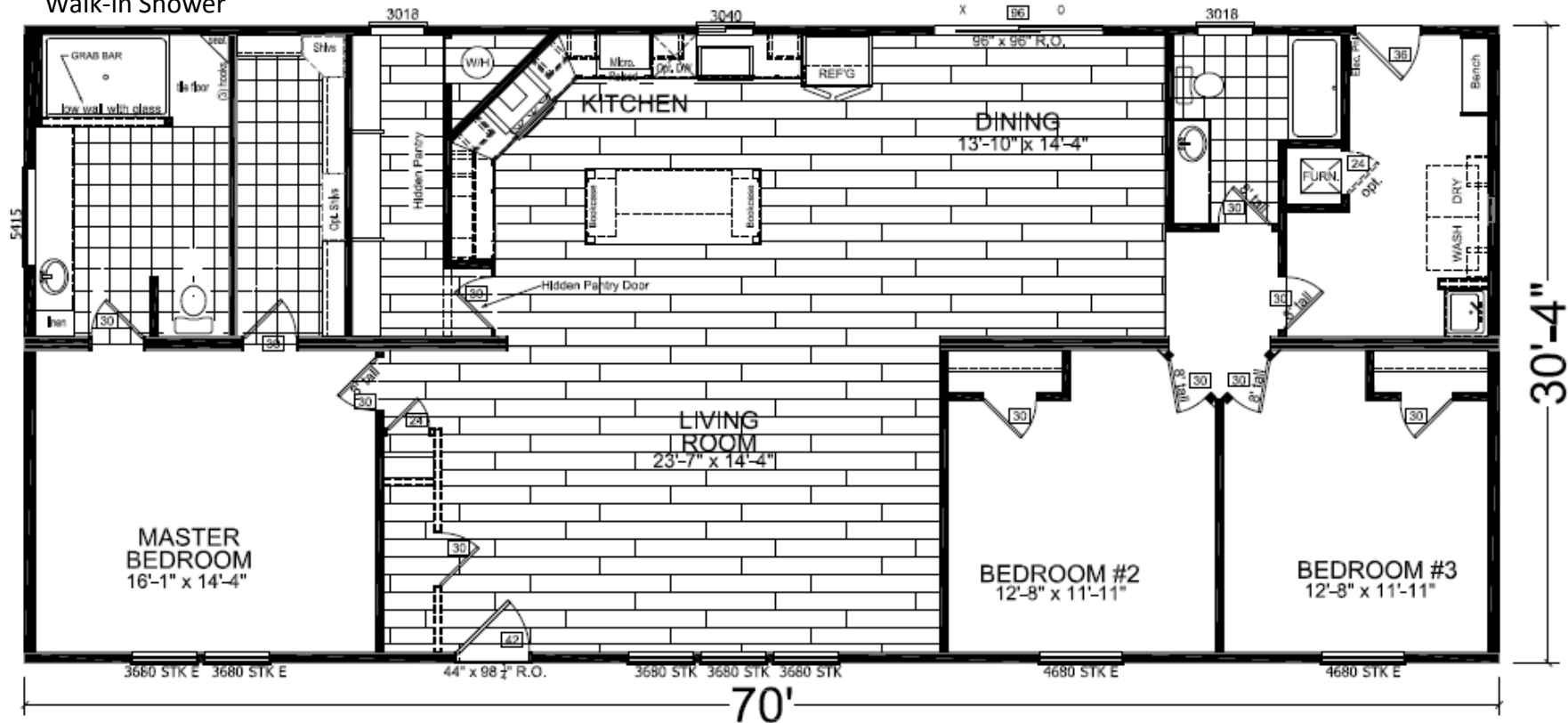
## MODEL 17-4663M-(Stretched)

3 BEDROOM, 2 BATH

ACTUAL SIZE: 70' X 30'4"

TOTAL AREA: 2,123 SQ. FT.

Optional  
Walk-in Shower



Due to continuous product development and improvement, prices, specifications and materials are subject to change without notice or obligation. Square footage and other dimensions are approximate. Images such as rendering, photos and floor plans may be shown with optional features and/or third-party additions that may not be available in all regions.



Featuring Homes Built By:



Weiser, ID

# Mountain West SERIES

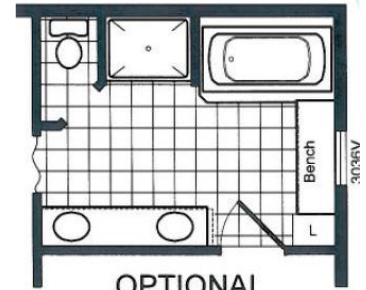


**MODEL 17-4683B**

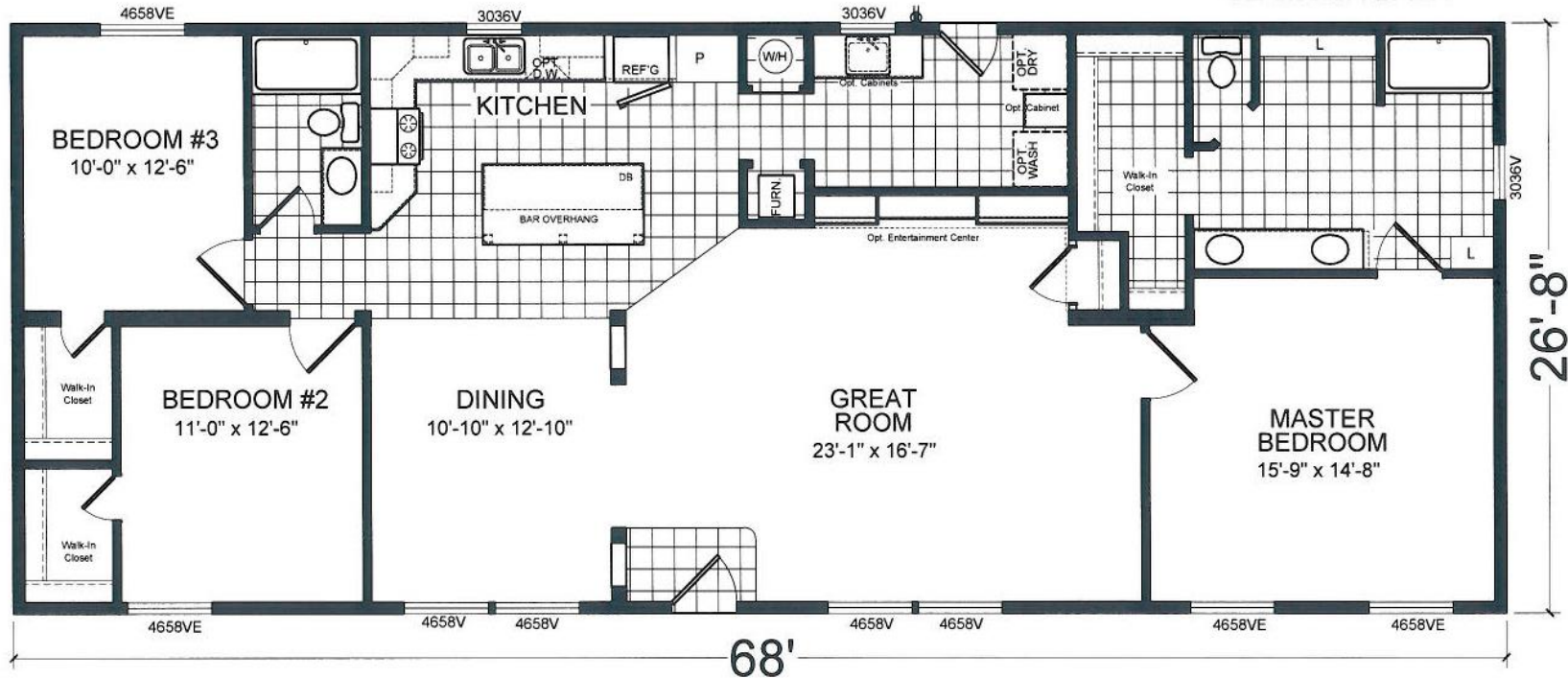
3 BEDROOM, 2 BATH

ACTUAL SIZE: 68' X 26'8"

TOTAL AREA: 1,814 SQ. FT.



OPTIONAL  
GLAMOUR BATH



Due to continuous product development and improvement, prices, specifications and materials are subject to change without notice or obligation. Square footage and other dimensions are approximate. Images such as rendering, photos and floor plans may be shown with optional features and/or third-party additions that may not be available in all regions.

Featuring Homes Built By:



Weiser, ID

# Mountain West SERIES

CHAMPION®

MANUFACTURED BEAUTIFULLY™

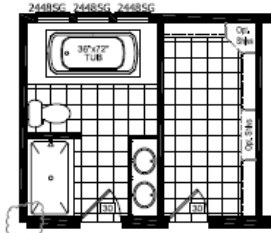
## MODEL 17-4704M

4 BEDROOM, 2 BATH

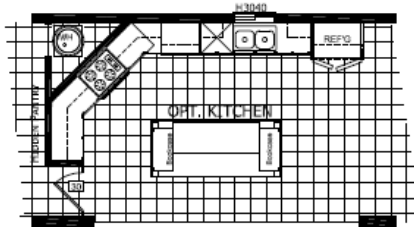
ACTUAL SIZE: 26'8" x 70'

TOTAL AREA: 1,867 SQ. FT.

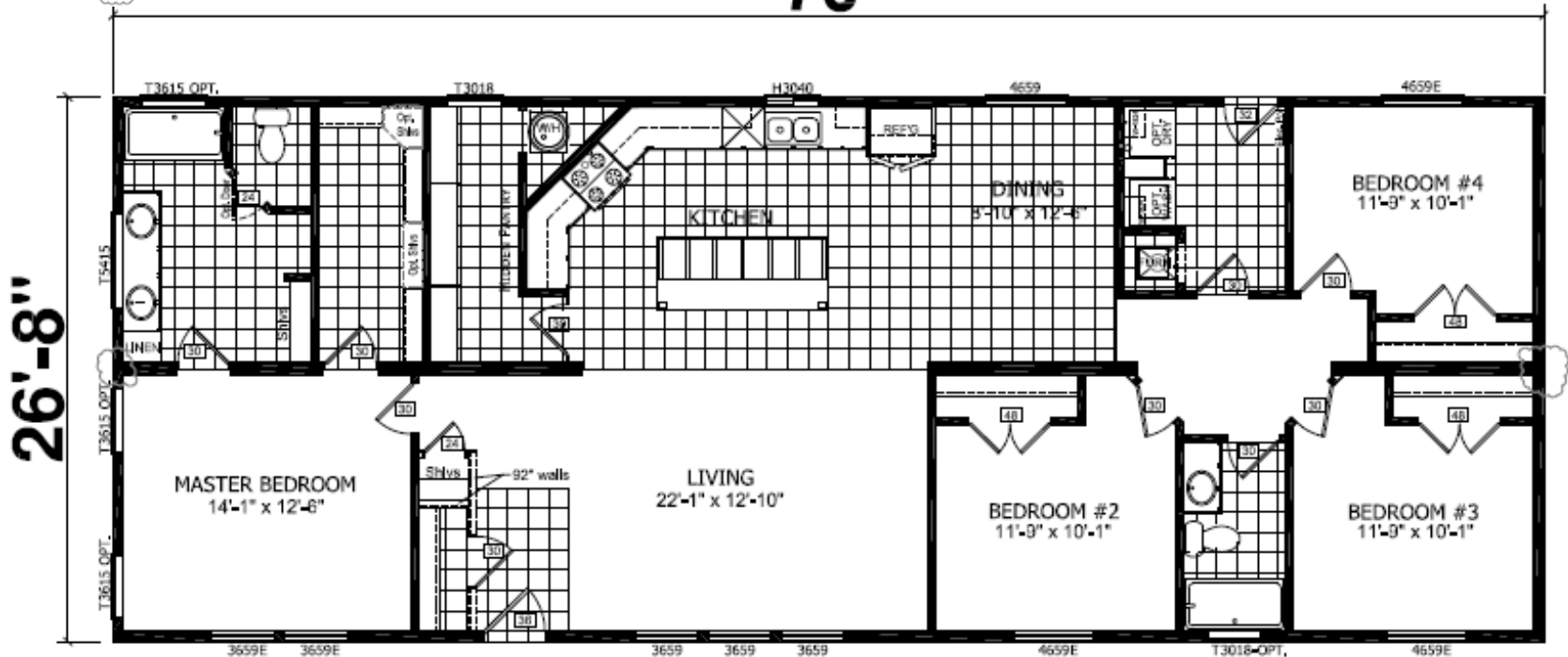
Alternate Bath



Alternate Kitchen



70'



Due to continuous product development and improvement, prices, specifications and materials are subject to change without notice or obligation. Square footage and other dimensions are approximate. Images such as rendering, photos and floor plans may be shown with optional features and/or third-party additions that may not be available in all regions.

Featuring Homes Built By:



Weiser, ID

# Mountain West SERIES

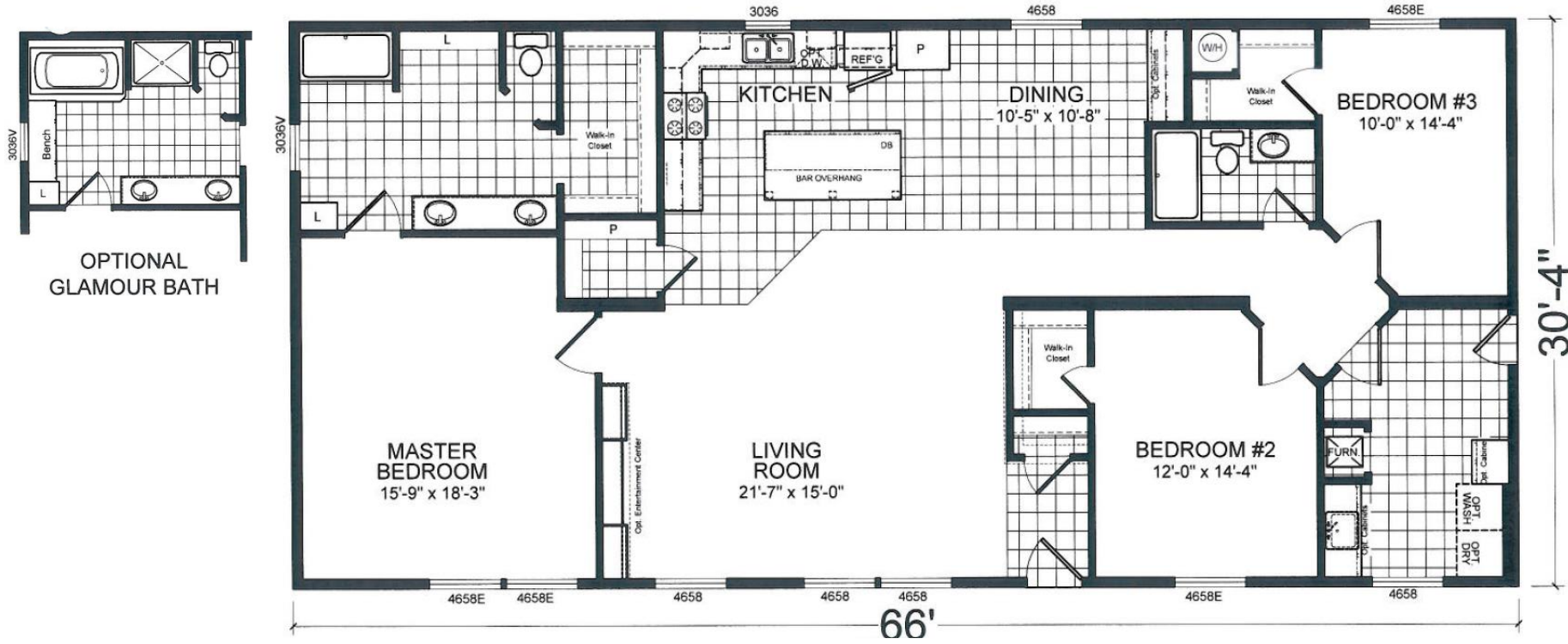


## MODEL 17-6663U

3 BEDROOM, 2 BATH

ACTUAL SIZE: 66' X 30'-4"

TOTAL AREA: 2,002 SQ. FT.



Due to continuous product development and improvement, prices, specifications and materials are subject to change without notice or obligation. Square footage and other dimensions are approximate. Images such as rendering, photos and floor plans may be shown with optional features and/or third-party additions that may not be available in all regions.

Featuring Homes Built By:



Weiser, ID

# Mountain West SERIES



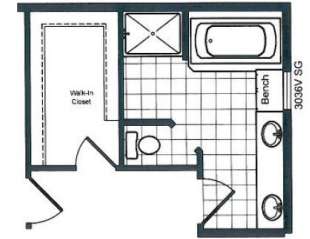
## MODEL 17-6724B

4 BEDROOM, 2 BATH

ACTUAL SIZE: 72' X 30'-4"

TOTAL AREA: 2,184 SQ. FT.

Optional  
Glamour  
Bath



Due to continuous product development and improvement, prices, specifications and materials are subject to change without notice or obligation. Square footage and other dimensions are approximate. Images such as rendering, photos and floor plans may be shown with optional features and/or third-party additions that may not be available in all regions.

Featuring Homes Built By:



Weiser, ID

# Mountain West SERIES

CHAMPION®

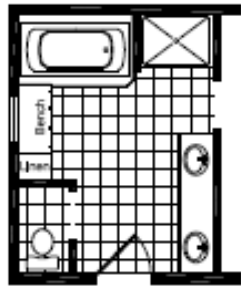
MANUFACTURED BEAUTIFULLY™

MODEL 17-6764B

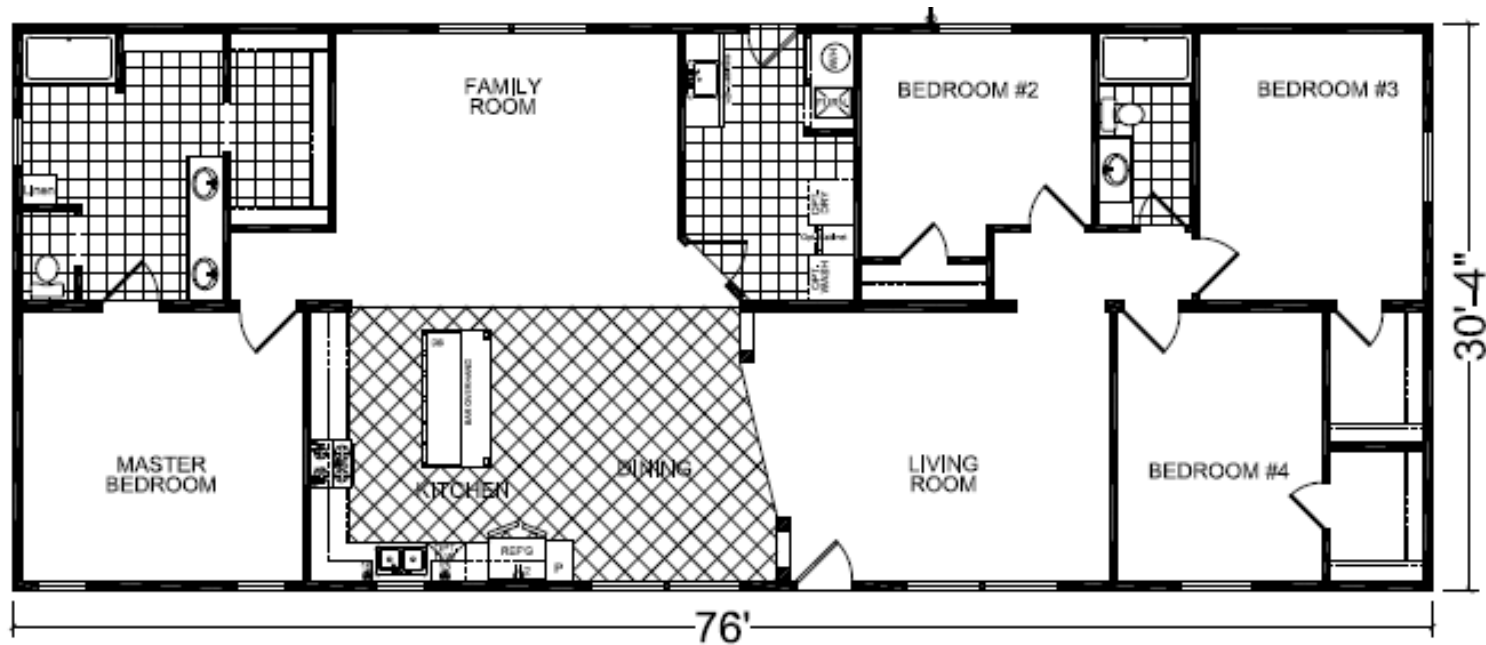
4 BEDROOM, 2 BATH

ACTUAL SIZE: 76' X 30'-4"

TOTAL AREA: 2,306 SQ. FT.



Optional  
Glamour  
Bath



Due to continuous product development and improvement, prices, specifications and materials are subject to change without notice or obligation. Square footage and other dimensions are approximate. Images such as rendering, photos and floor plans may be shown with optional features and/or third-party additions that may not be available in all regions.



Featuring Homes Built By:



Weiser, ID

# Mountain West SERIES

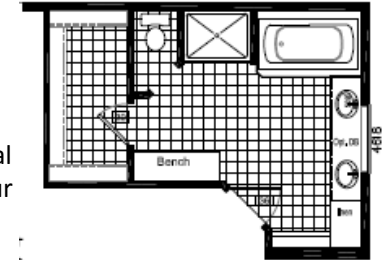


## MODEL 17-6764C

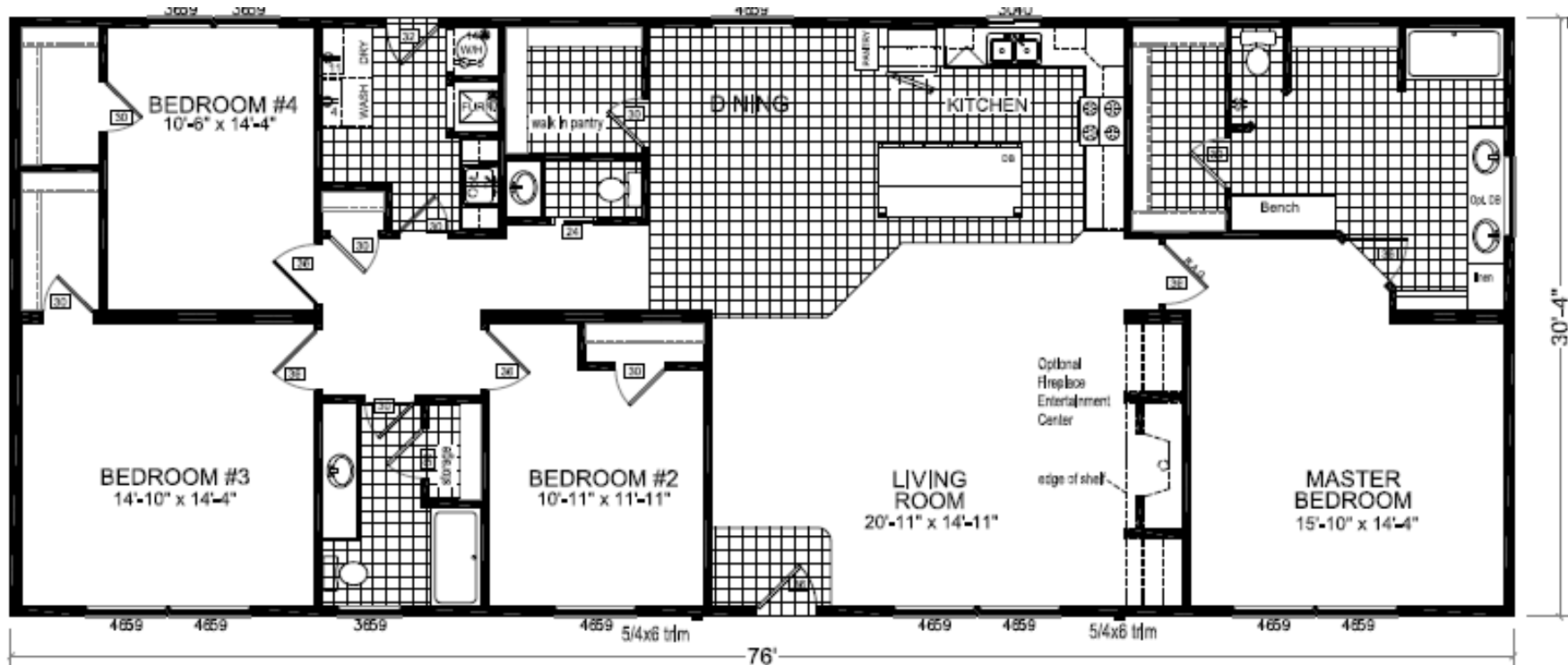
4 BEDROOM, 2.5 BATH

ACTUAL SIZE: 76' X 30'-4"

TOTAL AREA: 2,306 SQ. FT.



Optional  
Glamour  
Bath



Due to continuous product development and improvement, prices, specifications and materials are subject to change without notice or obligation. Square footage and other dimensions are approximate. Images such as rendering, photos and floor plans may be shown with optional features and/or third-party additions that may not be available in all regions.

Featuring Homes Built By:



Weiser, ID

# Mountain West SERIES

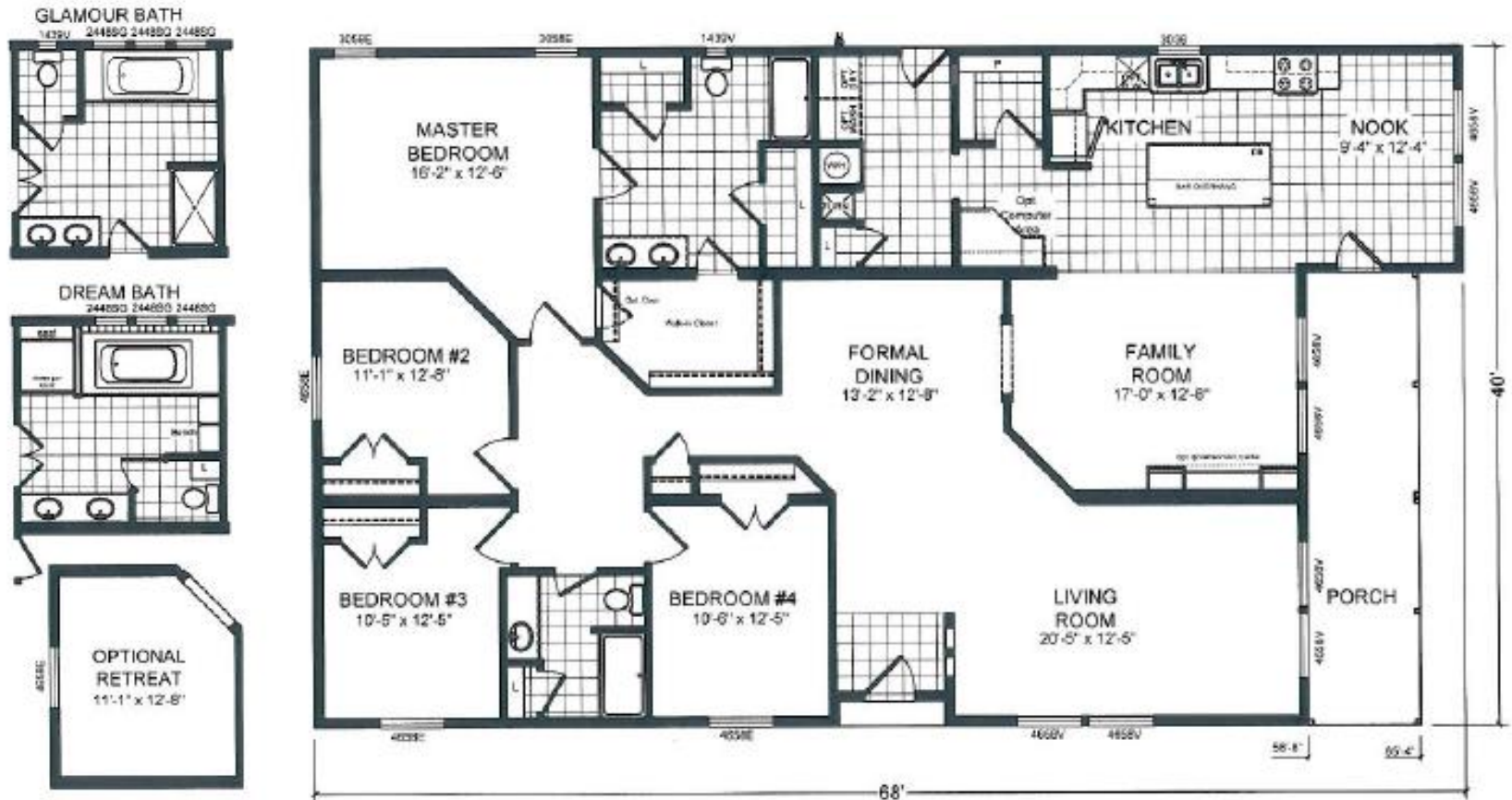


## MODEL 17-7684K

4 BEDROOM, 2 BATH

ACTUAL SIZE: 68' X 40'

TOTAL AREA: 2,471 SQ. FT.



Due to continuous product development and improvement, prices, specifications and materials are subject to change without notice or obligation. Square footage and other dimensions are approximate. Images such as rendering, photos and floor plans may be shown with optional features and/or third-party additions that may not be available in all regions.