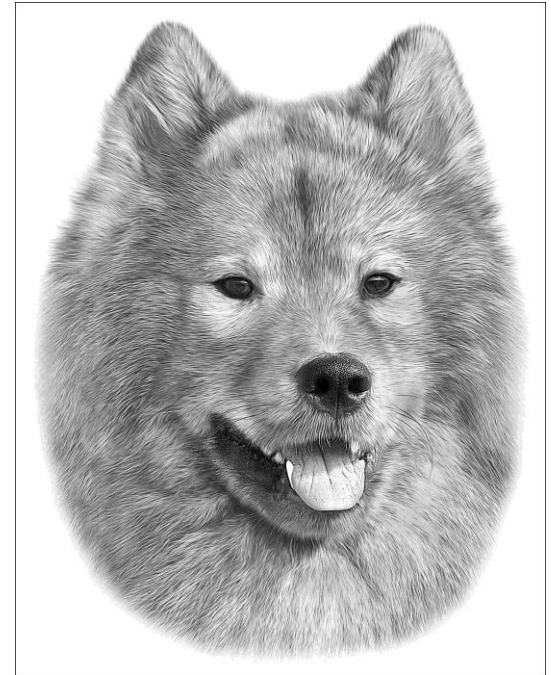
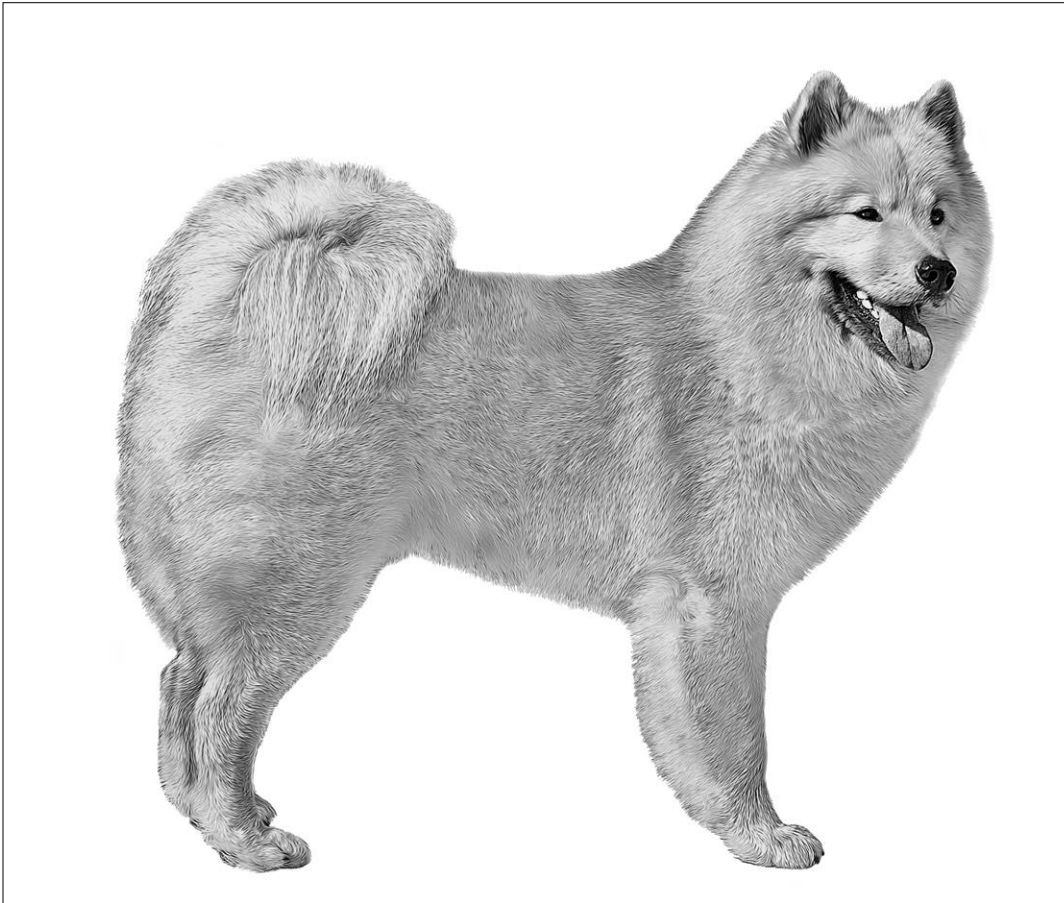


# The breed standard for Eurasier



Copyright: KZG Eurasier e.V.

Walter Vorbeck



---

# F.C.I.- STANDARD No.291

## BREED STANDARD EURASIER

**Group 5:** Spitz and primitive type

**Section 5:** Asiatic spitz and related breeds without working trial



# CKC BREED STANDARD for the EURASIER

## Group 3: working



---

## **BRIEF HISTORICAL SUMMARY:**

In 1960 a breed has evolved by crossing Chow Chows and Wolfspitzes.

This was first called "Wolf-Chow" and then, after crossing with a Samoyed, was renamed "Eurasier" (Eurasian) and recognized by the F.C.I.

---



Julius Wipfel's aim was a natural looking dog ( northern type ), friendly to people with varial natural colours.





Vorbeck, Post, Katthöfer,  
Marktaler, Wipfel.



Wolfsspitz



Samojede

# Entstehung des **EURASIERS**



Chow-Chow



KYNOLOGISCHE ZUCHTGEMEINSCHAFT



**EURASIER e.V.**

[www.kzg-eurasier.de](http://www.kzg-eurasier.de)

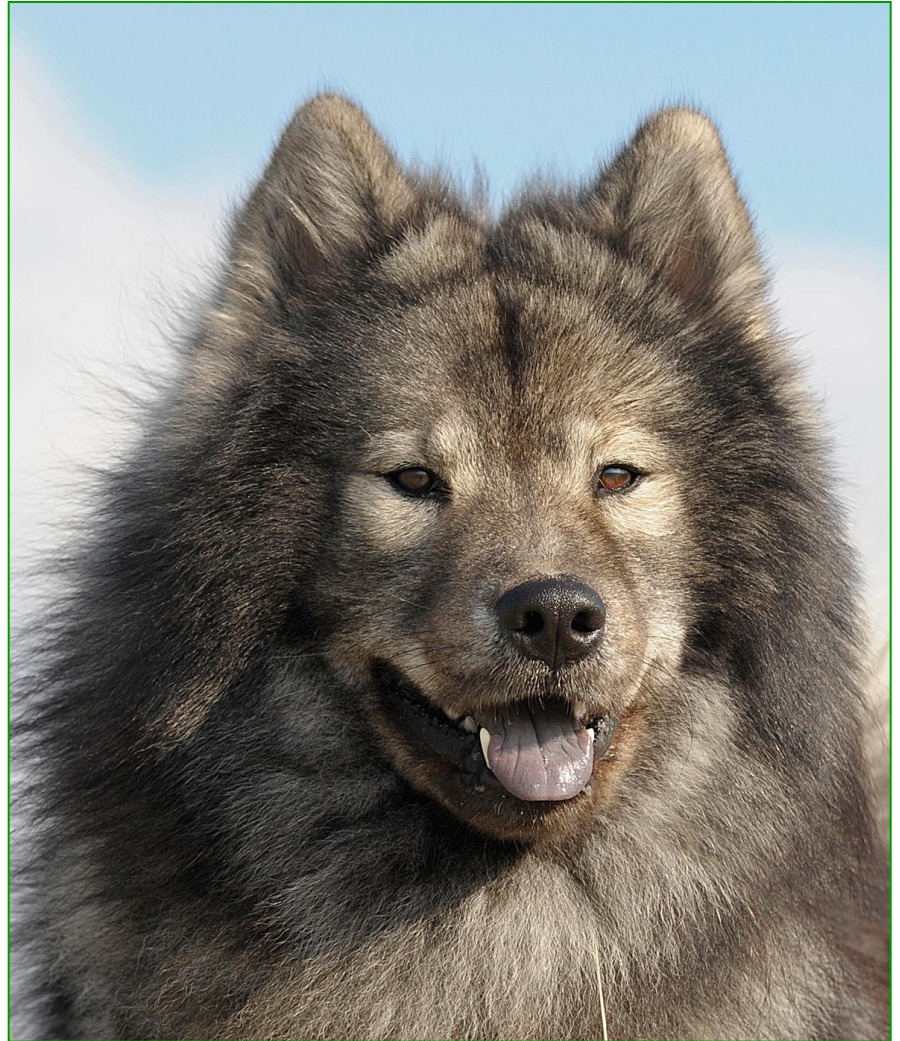




**GENERAL APPEARANCE:** Balanced, well constructed medium sized dog of Spitz type with prick ears and coat in varied colours. Length of coat should be such as still to reveal the body proportions. With medium bone.



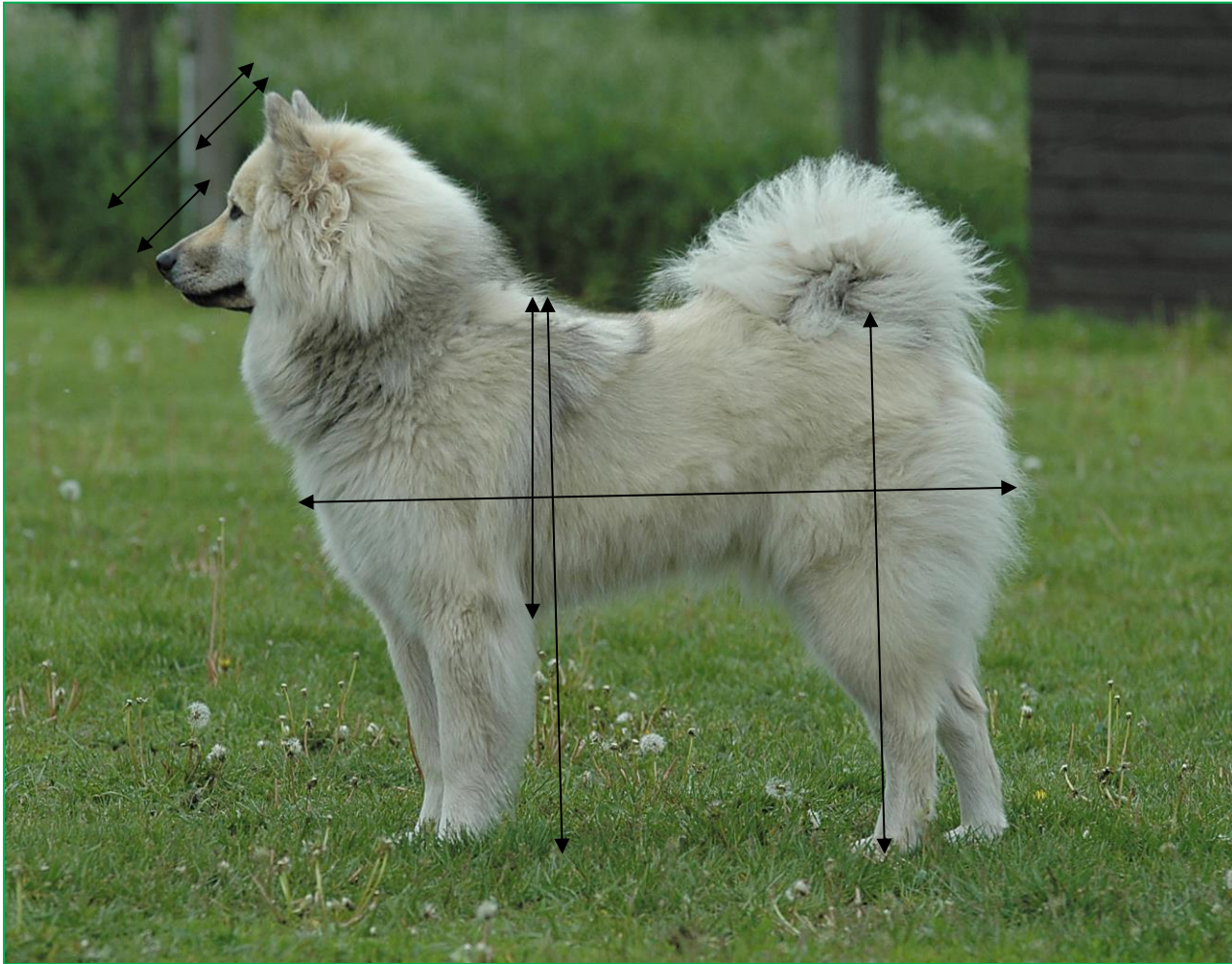
female, male







Design Vorbeck



**IMPORTANT PROPORTIONS:** Length of back slightly longer than height at withers.  
The ratio of length of muzzle and length of cranial region is almost equal.



# the first look

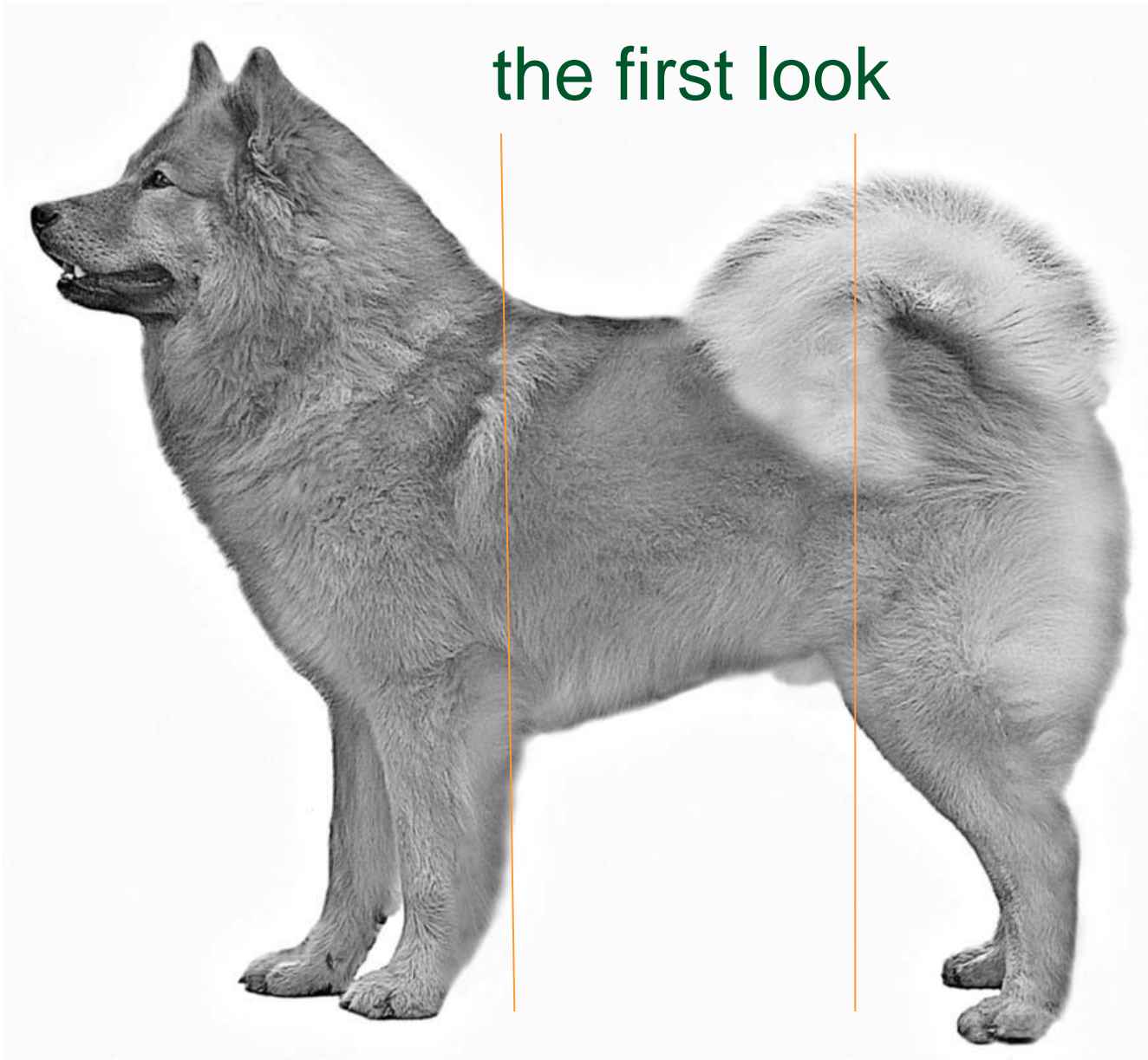


Photo Vorbeck

forequarters

middle

hindquarters

# BEHAVIOUR

TEMPERAMENT: Self-assured, calm, even tempered with high resistance against provocation. Watchful and alert without being noisy. Very strongly developed link to his family. Reserved towards strangers without being aggressive. No hunting instinct. For the full development of these qualities, the Eurasier needs constant close domestic contact with his family and understanding, yet consistent training.





# proportions of the head

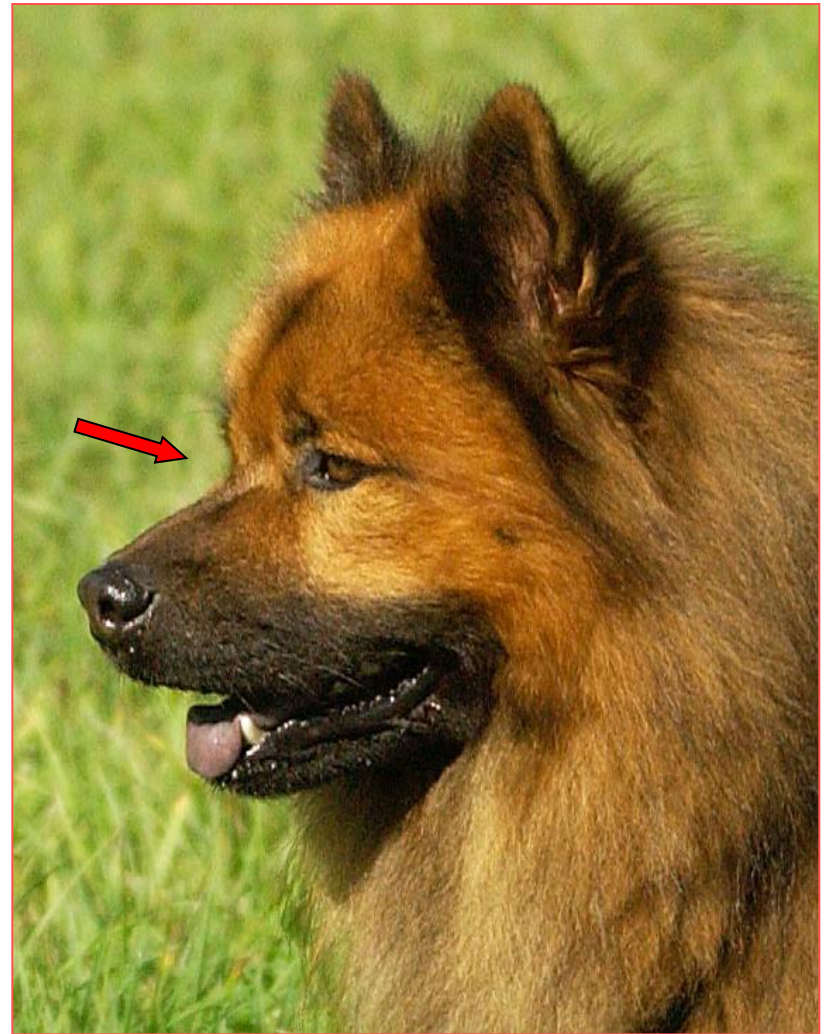
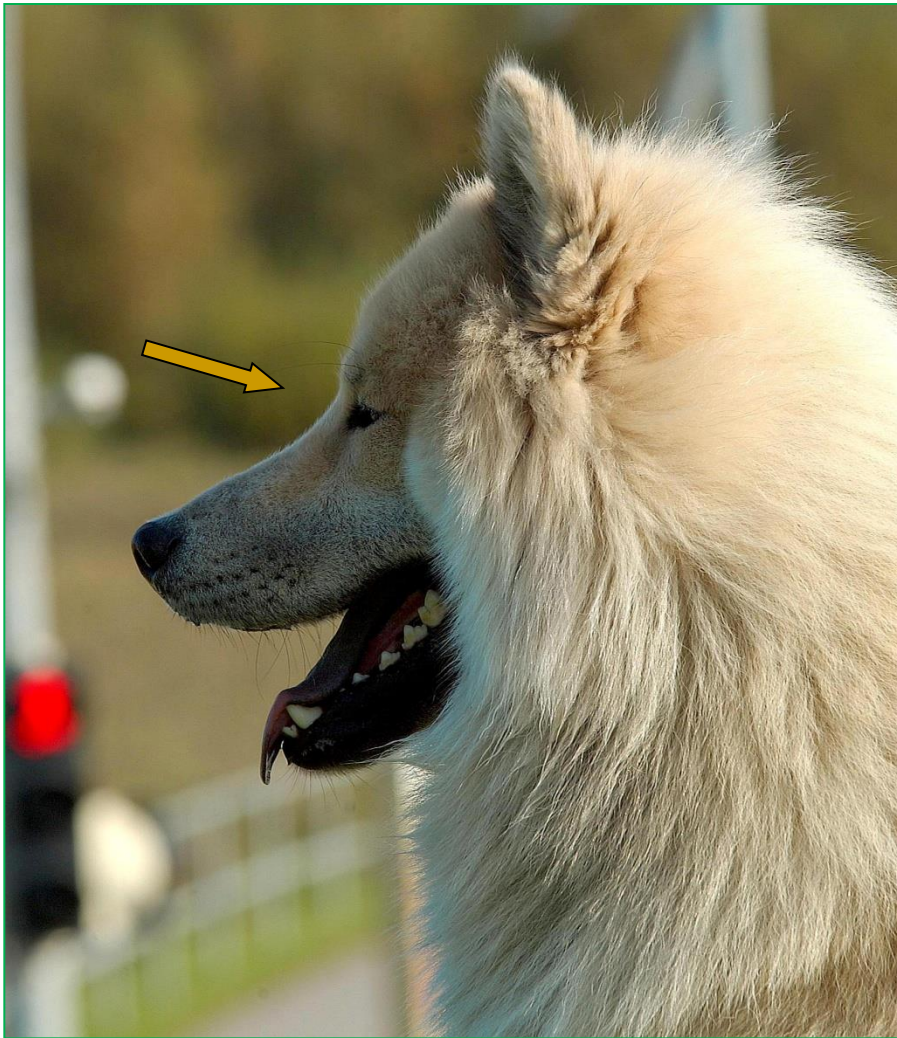
Balanced, not too broad skull.

Shape of head seen from above and in profile, wedge-shaped.

Bridge of nose and skull run parallel.



**foreface:** Stop: Barely defined.

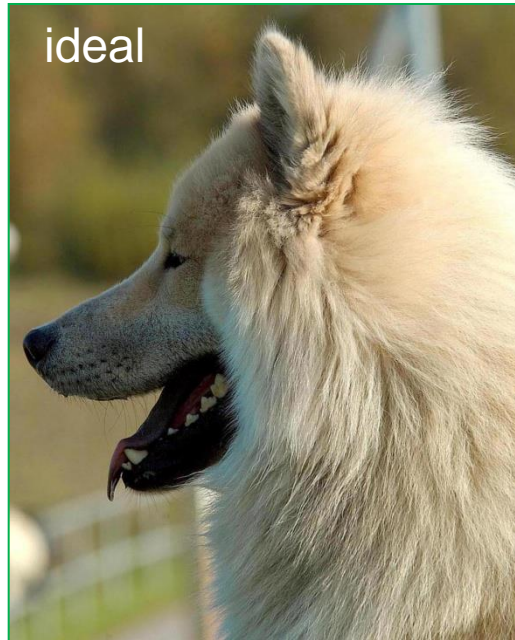




# skull - occiput

CRANIAL REGION: Flat forehead with distinct frontal furrow. Well defined occiput.





Standard



Deviations



# foreface

Muzzle: Neither too coarse nor too pointed. Tapering towards the nose. Straight bridge of nose and straight mandibles.

Nose: Medium size, nose leather with black pigmentation

Lips: Edges of lips tight with black pigmentation.

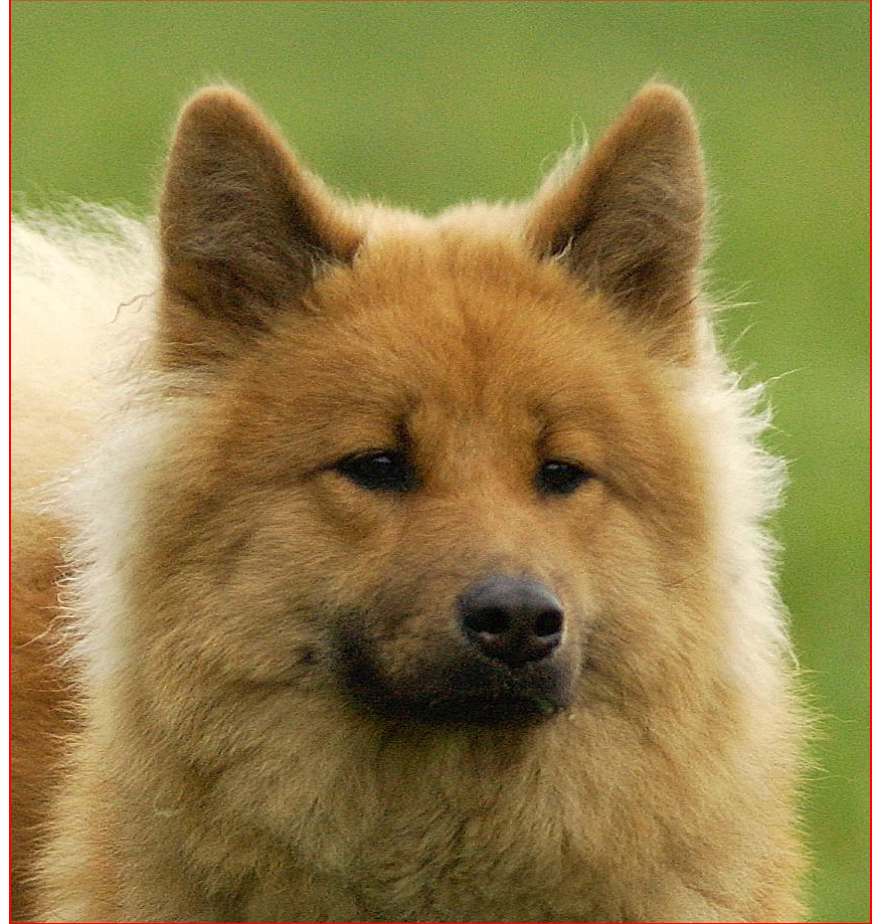
ideal



# muzzle; deviations



short muzzle



pointed muzzle



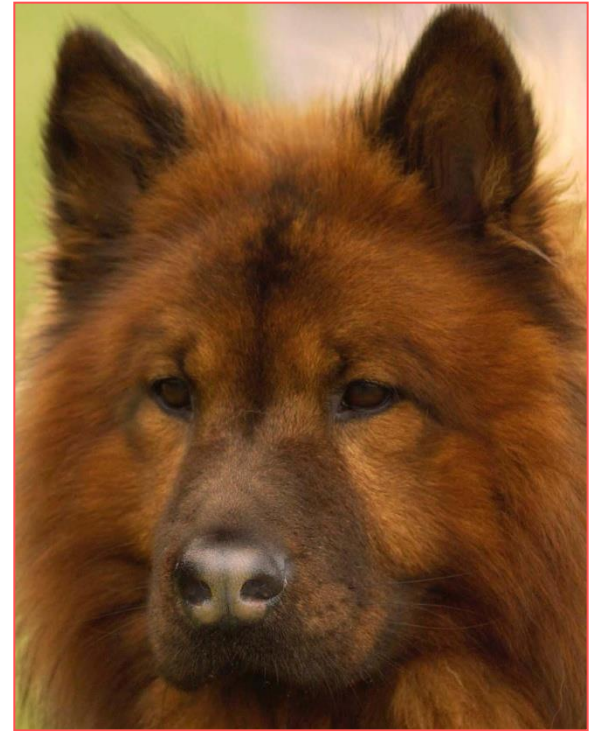
# nose: lack of pigmentation



mild



medium



pronounced

# foreface: lips



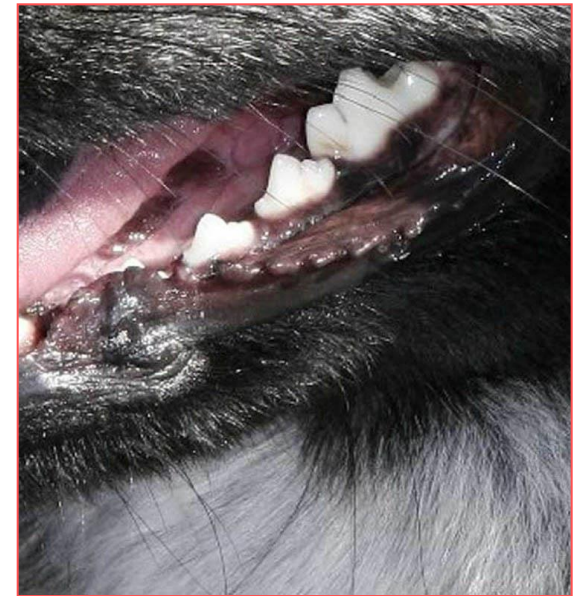
ideal



light grey



loose



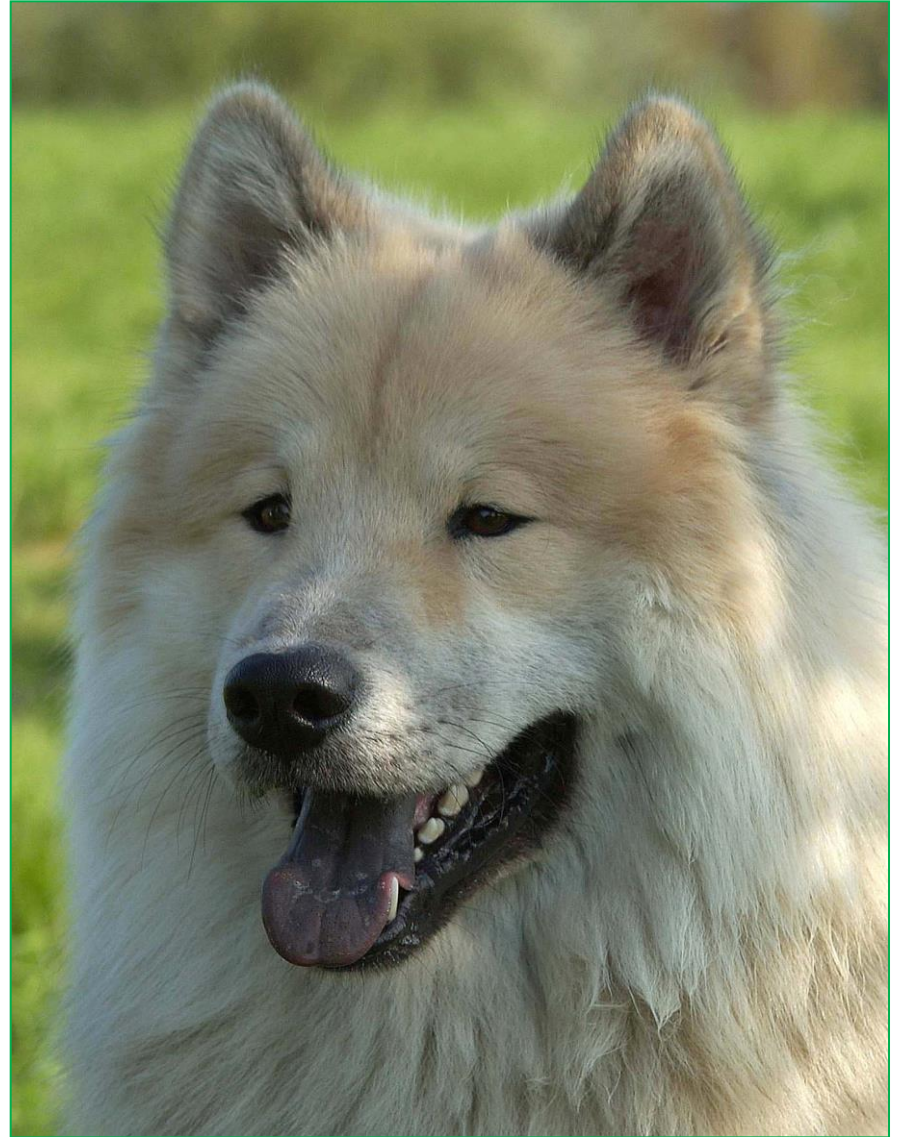
open



# foreface

Cheeks:

hardly pronounced



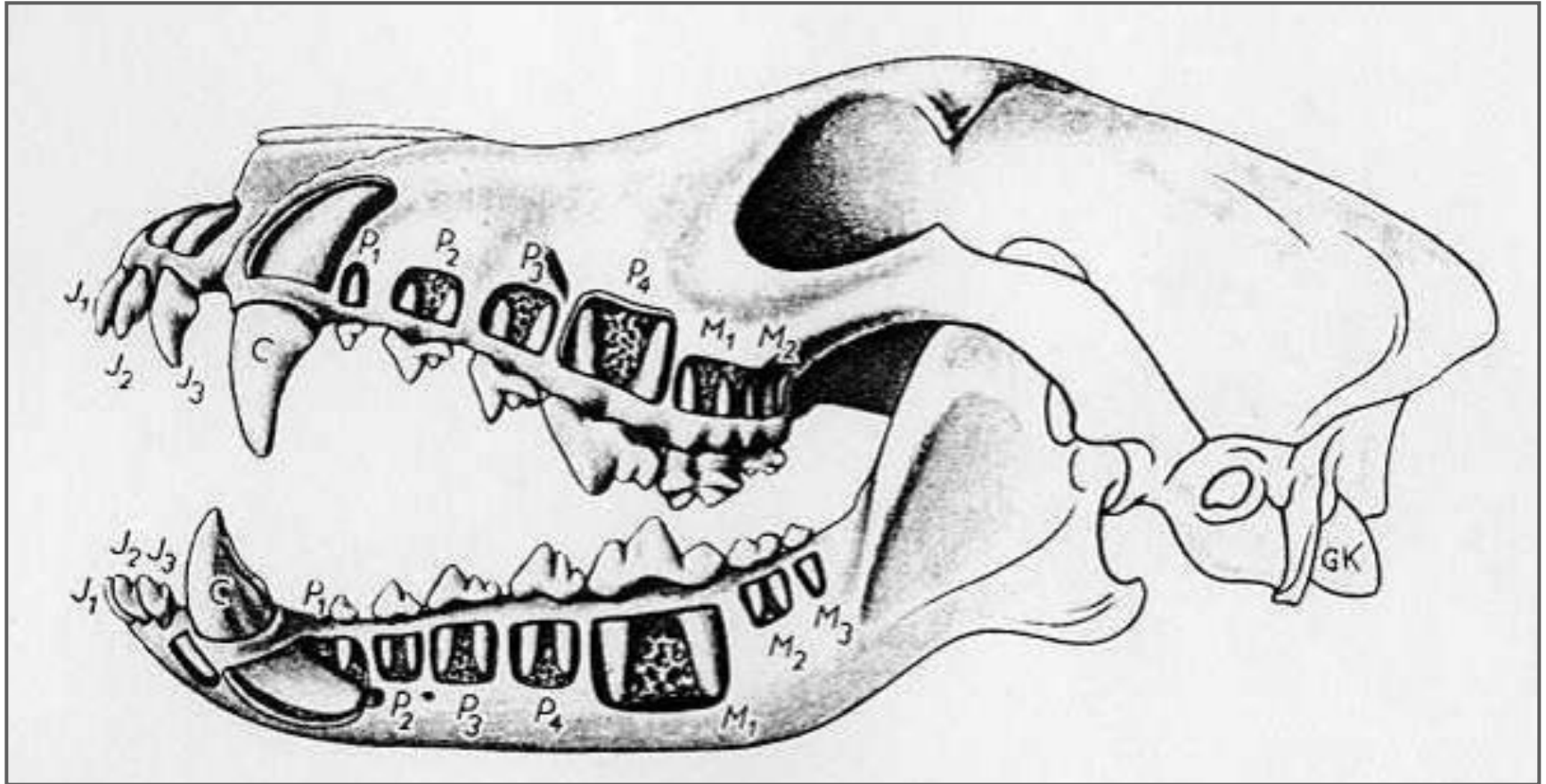
# teeth

Jaws/Teeth: Strong; broad lower jaw. Strong complete set of teeth (42 teeth conforming to usual tooth formation). Bite either scissor or pincer. Upper incisors either fit closely over lower incisors or they meet. Premolars and molars set in one line without gaps. All teeth must be in vertical position to jaw.

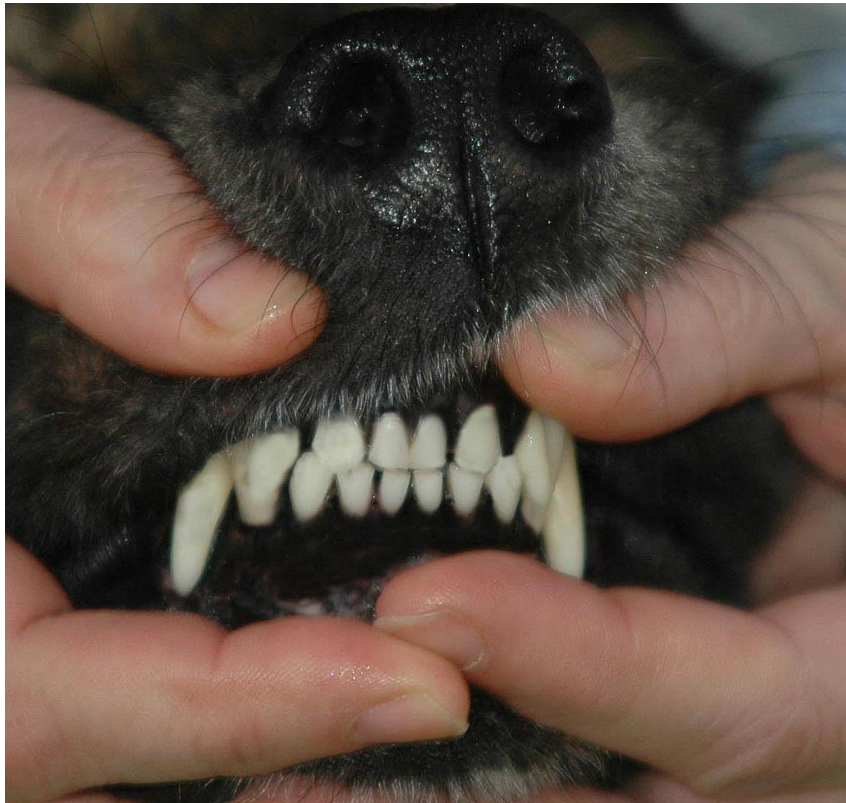




# teeth

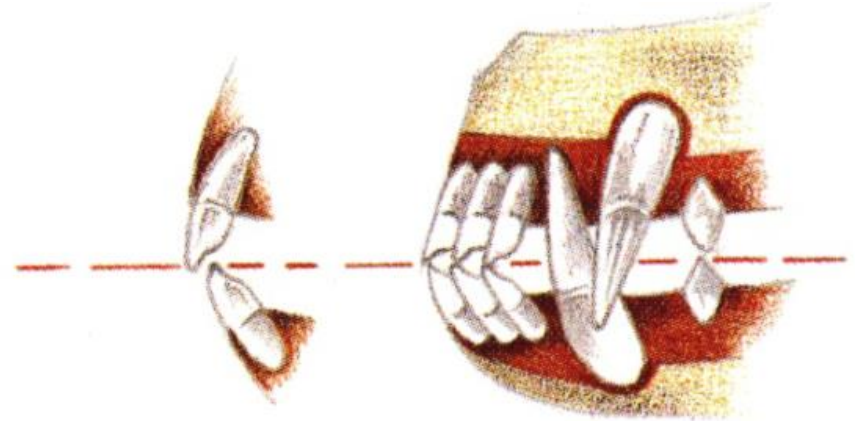


# bite

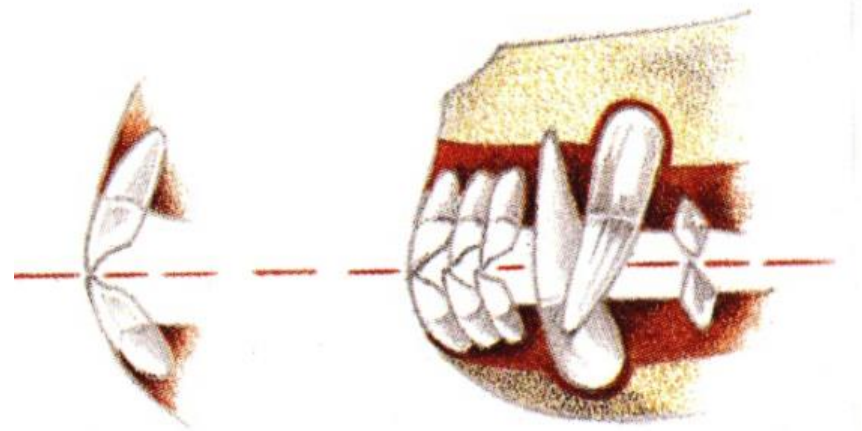


scissors bite

scissors bite



pincer bite





# bite: deviations

irregular bite



overbite



undershot

# eyes

Eyes: Dark, medium size, not too deep set nor protruding.  
The orbital aperture slightly slanting.

Eye-rims with black pigmentation and tight fitting.





# eyes; deviations



bulging eyes



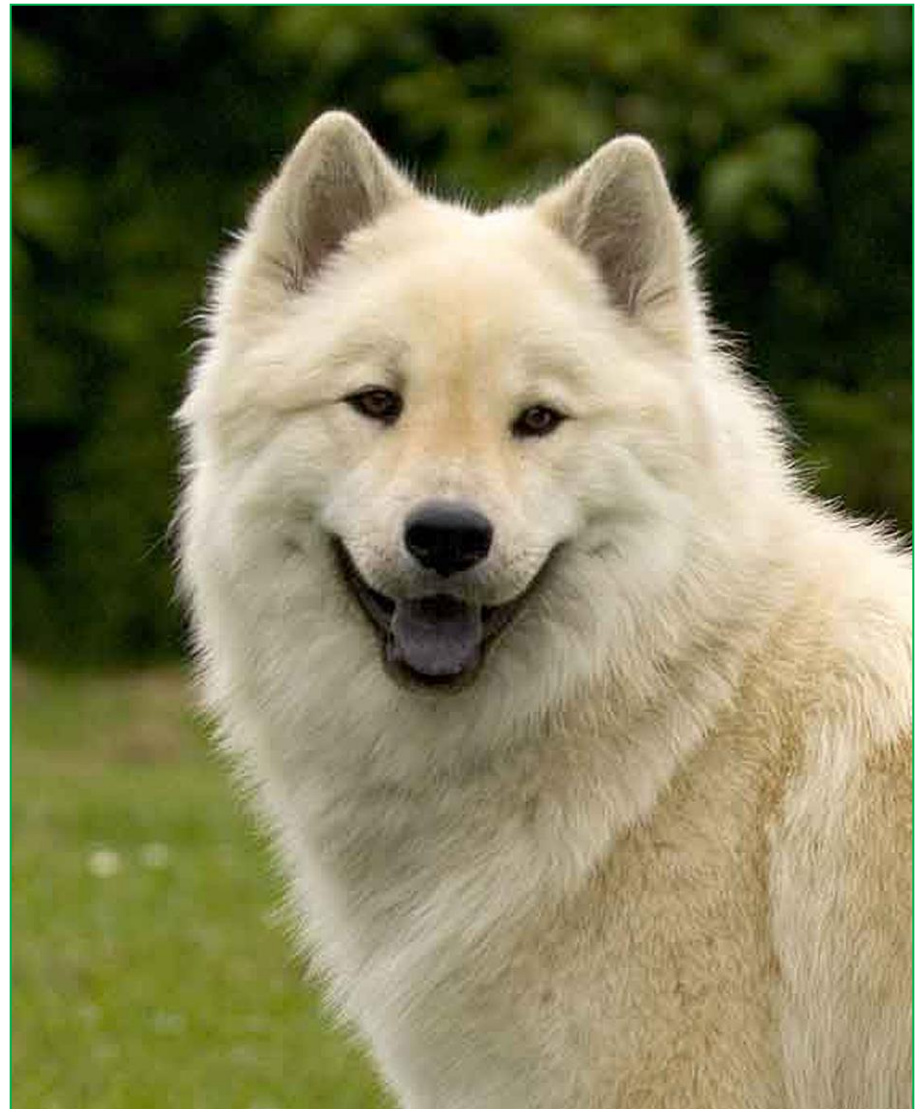
small eyes



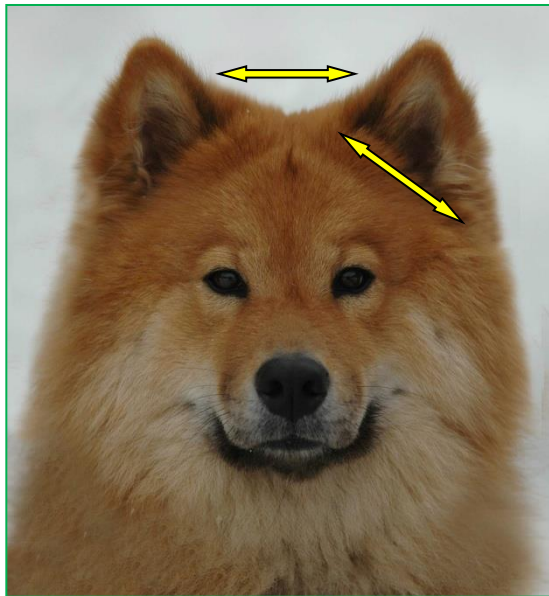
deep- set eyes

# ears

Ears: Set apart by about the width of the base of an ear. Medium size and triangular. Prick ears with tips slightly rounded. Tips of ears and centre of stop should form nearly equilateral triangle.







**nearly ideal  
set ears**

**ears;  
deviations**

Photos Vorbeck; Post



**semi-  
pricked  
ear**



**broad set ears**



**narrow set ears**



**big and narrow ears**



ideal



straight edges of the ears

deviation



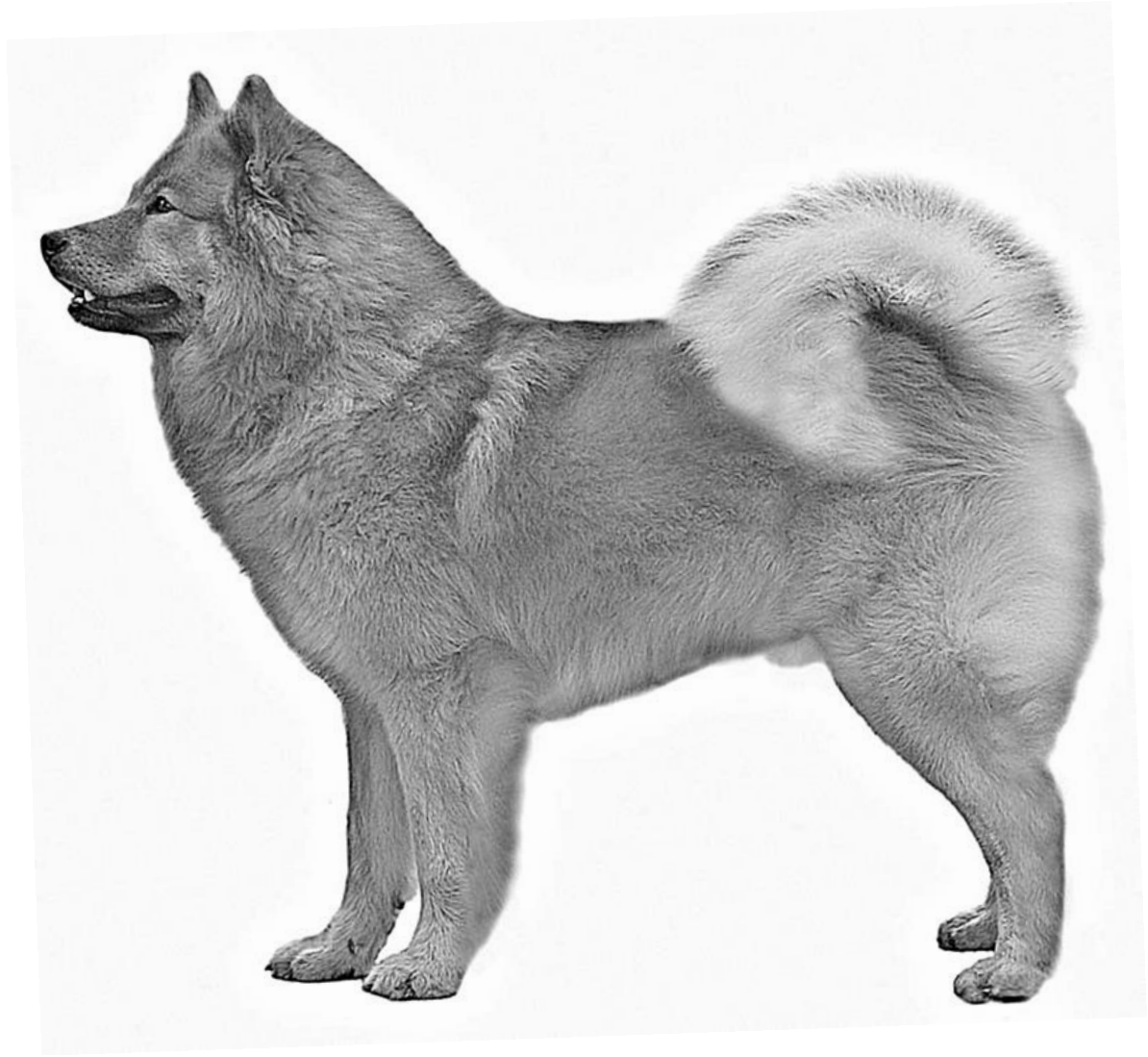
soft ears

Photo Vorbeck



# neck line

NECK: Of medium length, in balance with general appearance. Well muscled. Skin on throat tight fitting. Flowing transition to body.





ideal

neck



short



long



# body

General appearance:

Strong, not too short in back

Withers: pronounced

Back: Firm and straight.

Very well muscled.

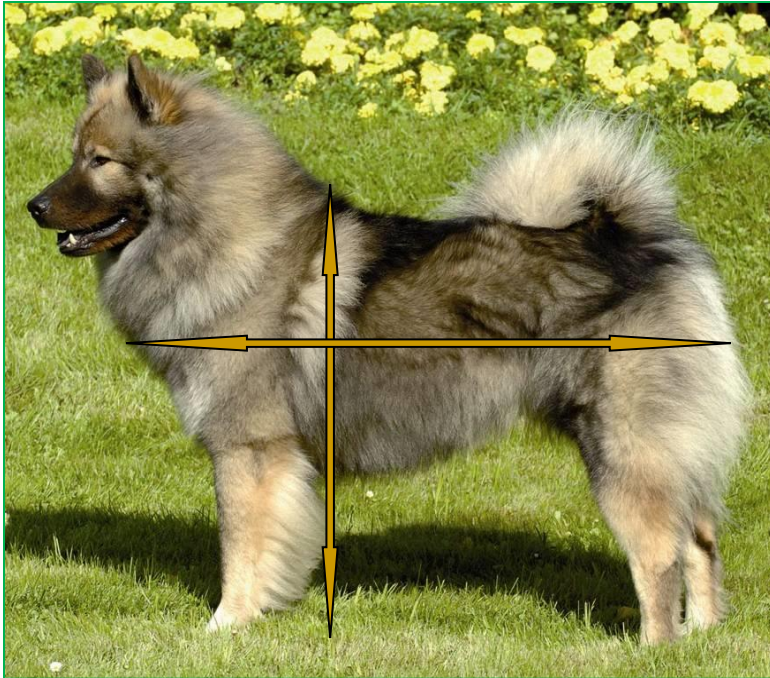
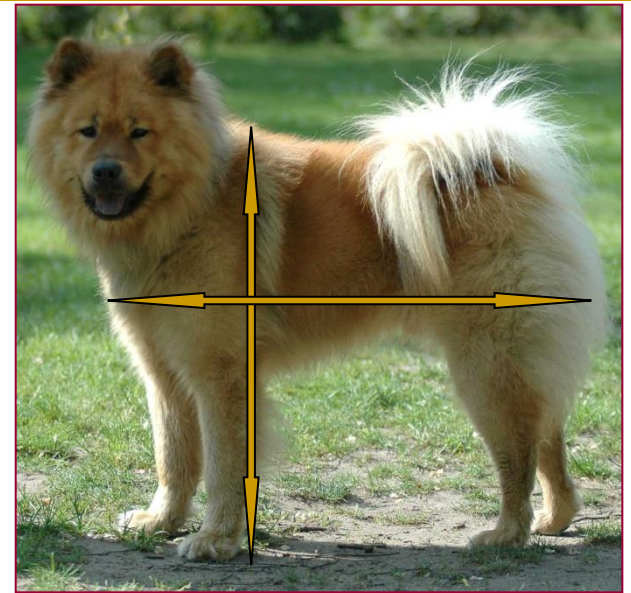
Loin: Of good length and width, very well muscled.

Croup: Straight, broad and strong

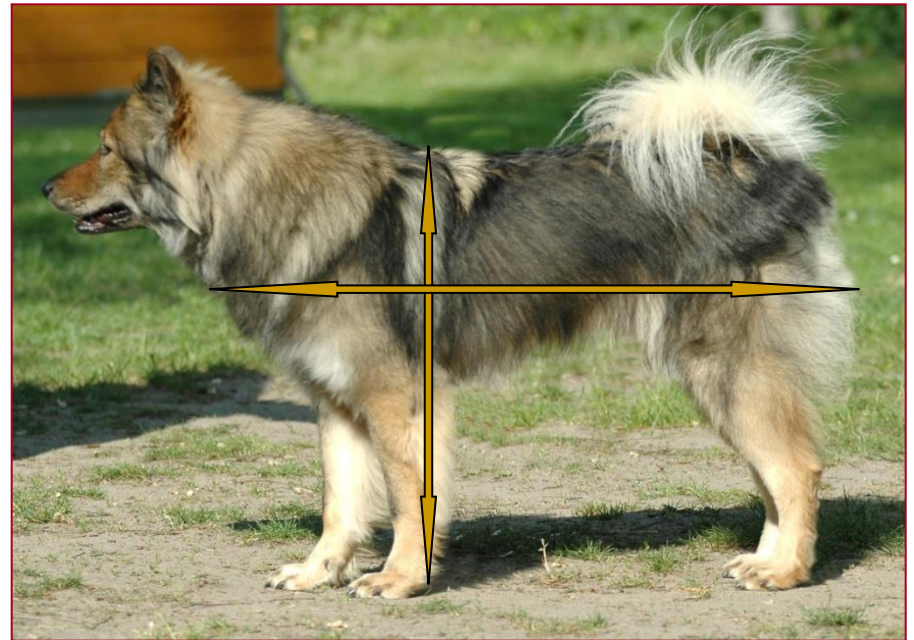


# interpretations

short type



standard



long type



# balance



long legs, unbalanced



ideal, balanced



short legged, unbalanced

# backline deviations

normal,  
straight



arched back and loin



short



long



dip back





# backline; deviation



rising  
topline

# body

TAIL: Straight set on, round and firm, of good thickness, tapering towards the tip. Bushy hair. Carried lying forward over back or bent slightly sideways or rolled up. When hanging down, reaching the hocks.



correct,  
well set tail



short tail



sickle tail



low set tail



# body

Chest: Reaching to the elbows with oval shaped ribcage. Forechest well developed without being pronounced. Sternum long, reaching far back.

Lower line: Slight tuck up.





Photos Vorbeck



## body - chest



poorly developed forechest,  
chest of insufficient depth,  
lack of substance



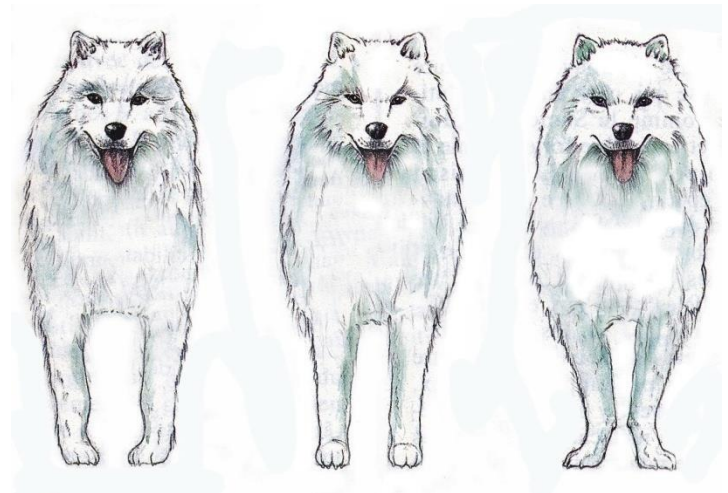
well developed forechest,  
good substance,  
correct depth of chest

# extremity: forequarters

## General

### Appearance:

Seen from the front, straight and parallel.





# front



narrow front



ideal



wide front





narrow front, pastern close together



pasterns turning out

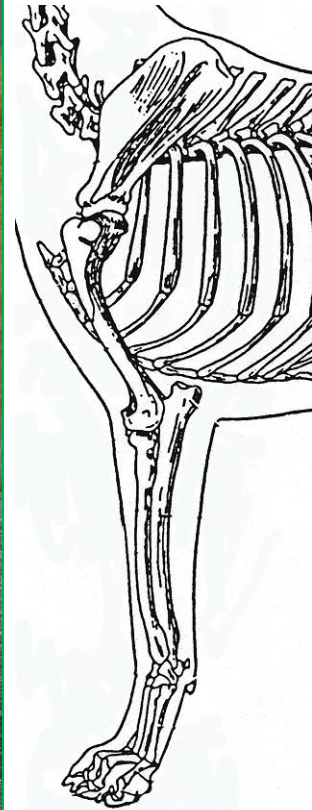


bowlegged



# extremity: forequarters

Seen from side, moderately angulated. Upper arm and forearm of almost equal length.



# forequarters

Shoulders: Well muscled,  
slightly slanted.

Upper arm: Medium length,  
well muscled.

Elbows: Close to chest

Forearm: Medium length,  
well muscled

Pastern joint: Strong



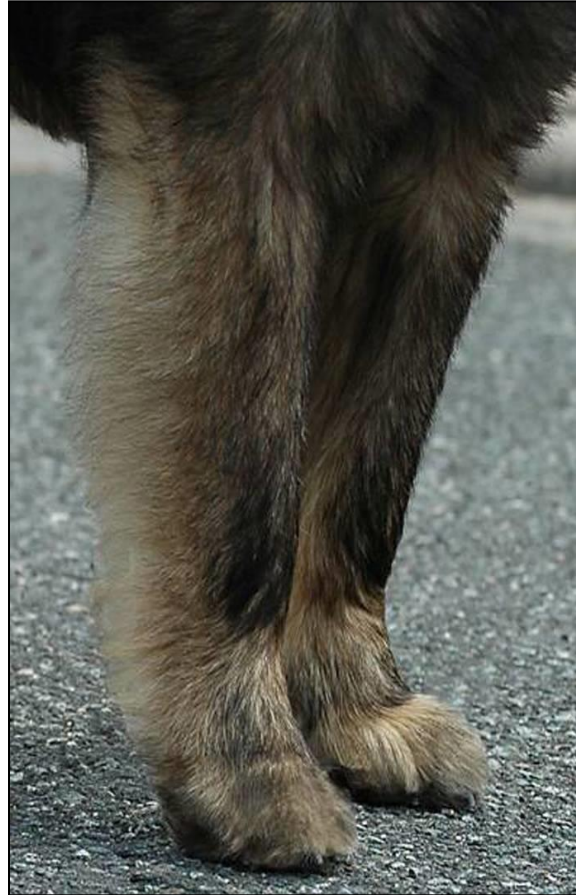
Photo Post



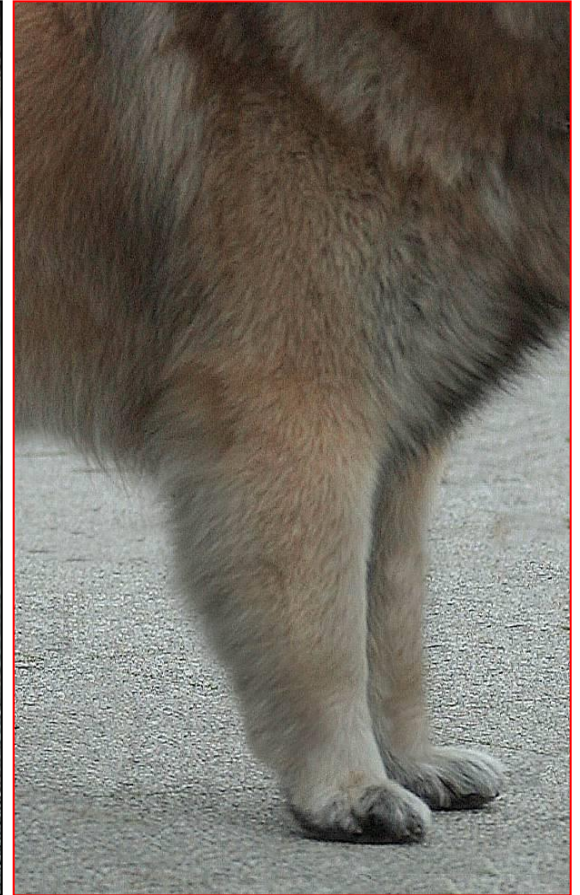
# forequarters pastern



down in the pasterns



short pastern



straight

Photos Vorbeck

# forequarters

Pastern: Medium length, seen from the front, quite straight, seen from side, inclined slightly forward.





# forequarters

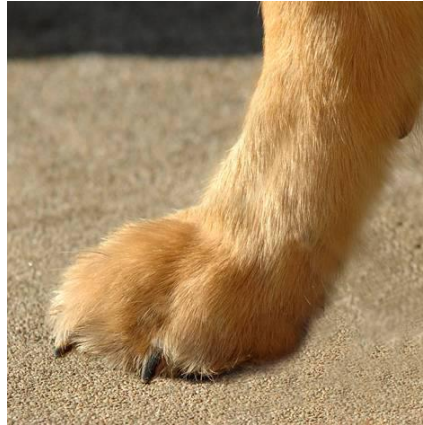
Firm, well cushioned,  
black pigmented pads.  
Thick hair between  
pads.



Photo Vorbeck

# forequarters, hindquarters

Oval; tight, moderately arched toes. Strong nails with dark pigmentation.



hare foot

cat foot

oval

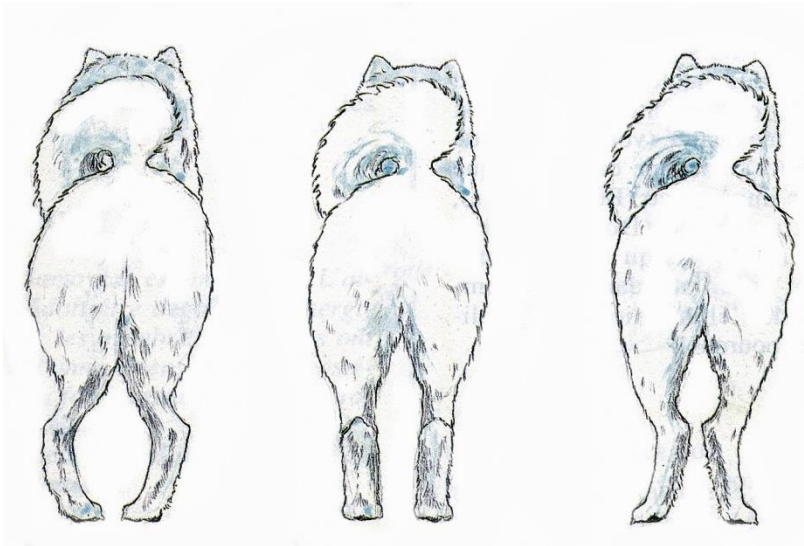
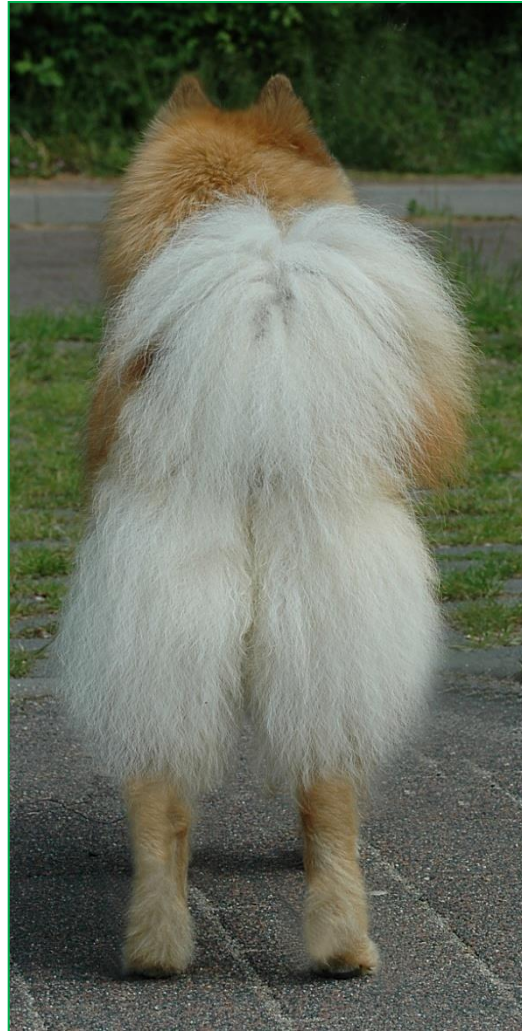


# hindquarters

## General

### appearance:

Seen from behind, set straight and parallel.



# hindquarters

Pelvis: Slightly slanting

Upper thigh: Medium length with strong muscle.

Stifle: Solid, angle not too open

Lower Thigh: Medium length, well muscled.

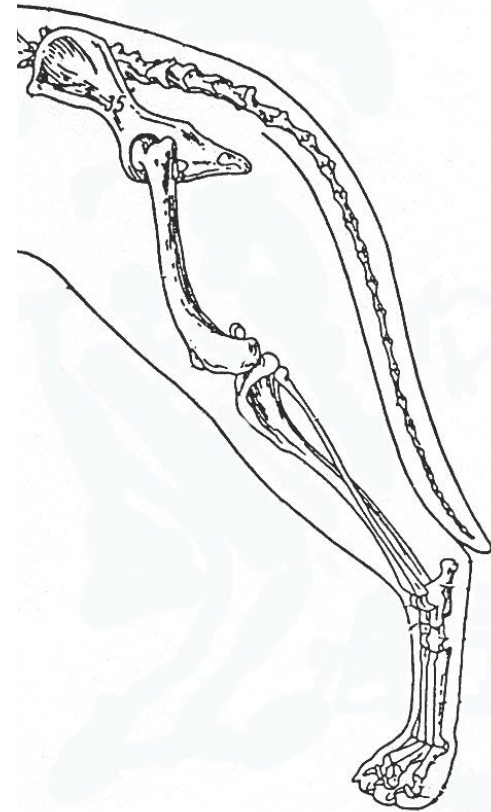


Photo Vorbeck



# hindquarters

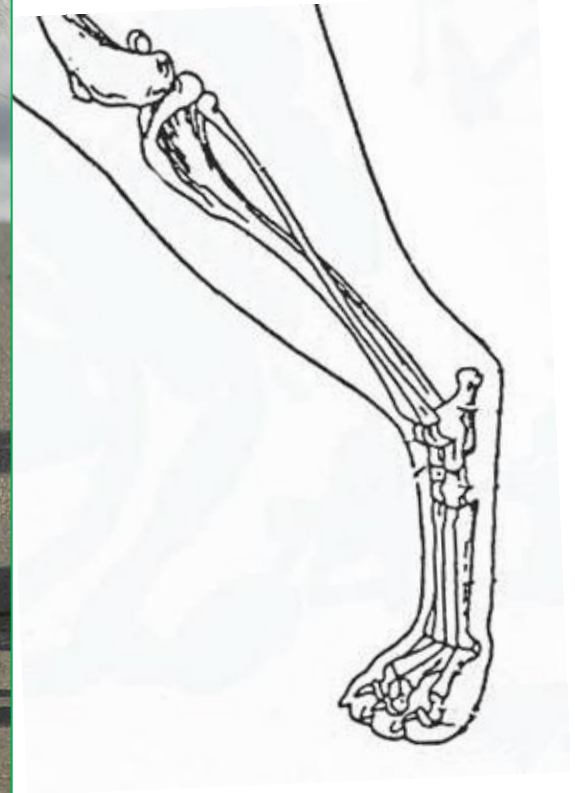
Seen from the side with moderate angulation. Upper and lower thigh of almost equal length.



# hindquarters

Hock joint: Not set too low, stable, neither turning in nor out.

Hock (Metatarsus): Good length and width, vertical when seen from the side.

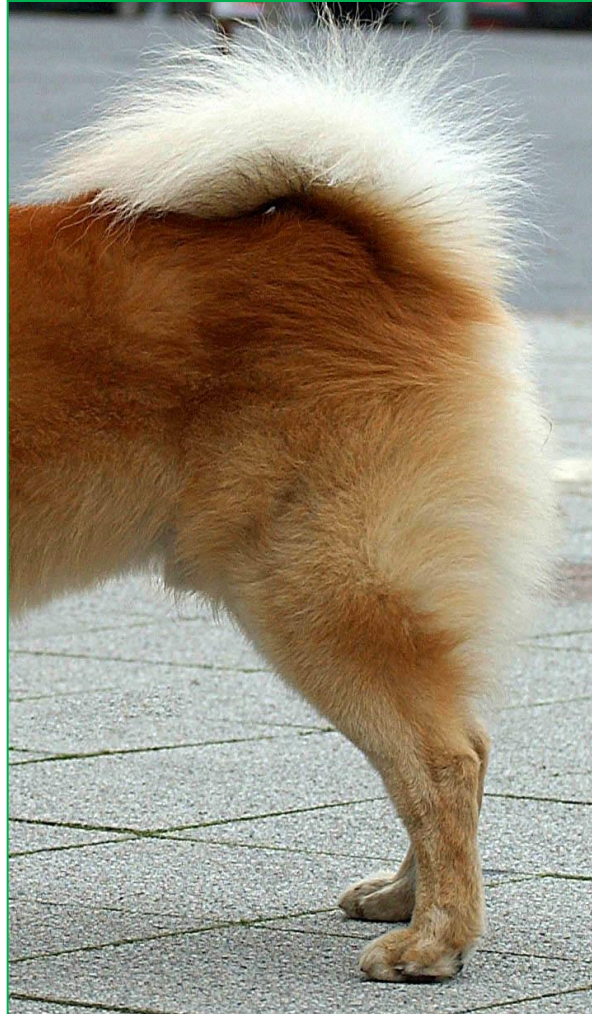




# hindquarters angulation



sickle hocked



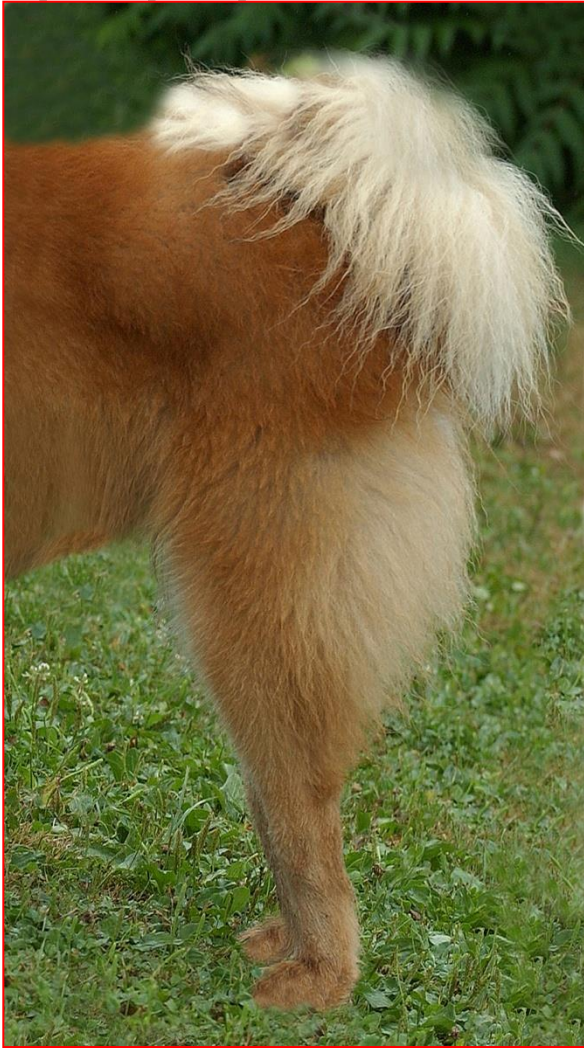
ideal



straight hindquarters



# hindquarters:



very straight



weak hocks

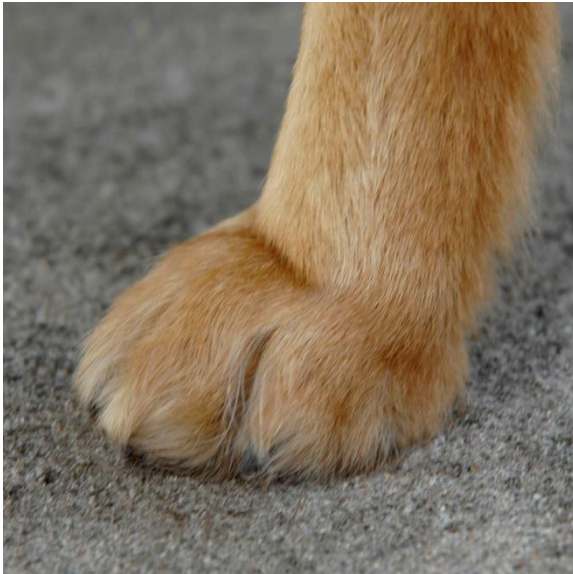


over angulated

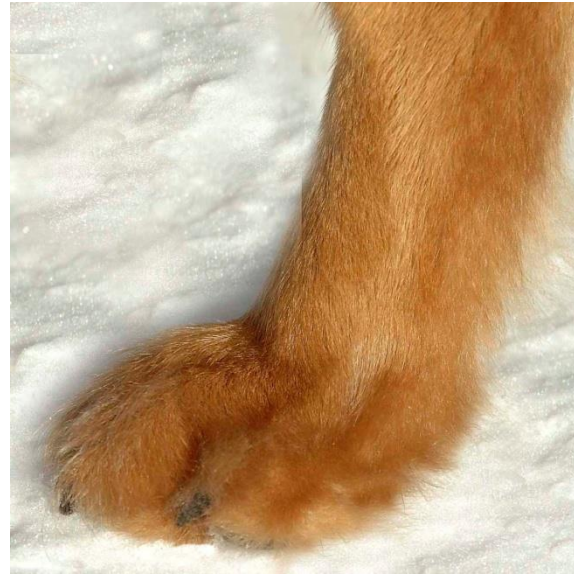


# hindquarters

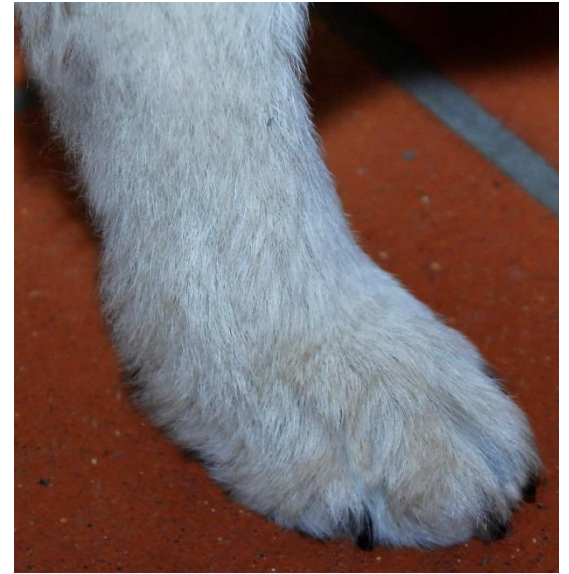
Hind feet: Oval; tight, moderately arched toes.  
Strong nails with dark pigmentation.



cat foot



hare foot



oval



**GAIT**: Ground covering  
with plenty of drive  
and good forward  
stride





# skin and coat

SKIN: Tight and well pigmented

COAT:

HAIR: A thick undercoat all over the body. Loosely lying guard hair of medium length. Short coat on muzzle, face, ears and front of legs.





# skin and coat

Tail, back of front legs (feathers) and hind legs (breeches) covered with long hair. Coat on neck only slightly longer than on the body, not forming a mane.



ideal



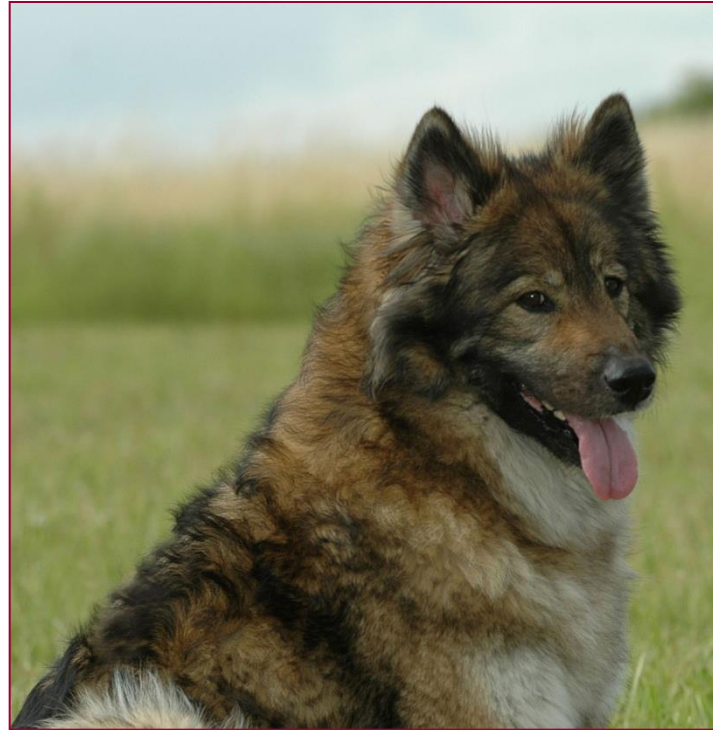
mane



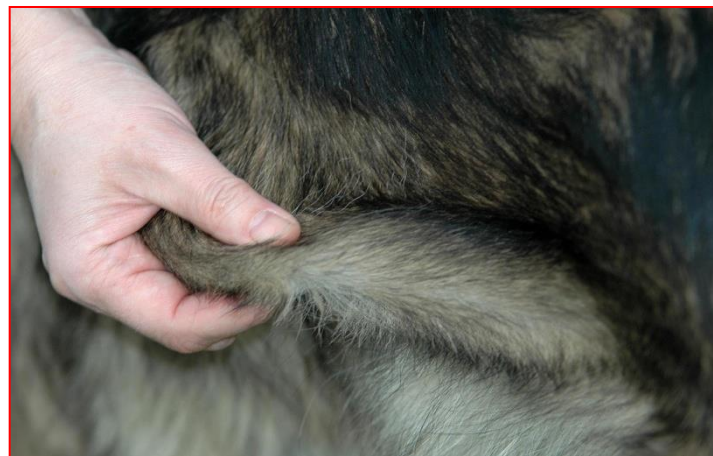
excessive hair



# skin-coat



wavy



loose  
skin and  
connective  
tissue

---

## COLOUR:

All colours and colour combinations are permitted with the exception of pure white, white patches or liver.



cream



Photo Post

---

cream red



---

Photo Vorbeck



---

red cream



---

Photo Vorbeck

# red cream with light mask





red





dark red



Photo Burk



cream grey



Photo Vorbeck

grey cream



Photo Vorbeck



# light wolf grey



Photo Vorbeck

# wolf grey



Photo Vorbeck



# dark wolf grey



Th.Post



# dark wolf grey with light mask



Photo Vorbeck



# agouti with light mask



Photo Vorbeck



# agouti





# dark agouti



Photo Vorbeck

# black and cream





black



# Colour: deviations



white



patched





# Colour: deviation



puppy and adult, same dog

---

## **SIZE AND WEIGHT:**

- Height at withers:      Male: 52 – 60 cm  
   Female:      48 – 56 cm
  
  - Weight:                              Male: 22 – 32 kg  
   Female:      18 – 26 kg
  
  - The balance of the proportions is most important but the ideals to aim for are medium height and weight.
-



---

- **ELIMINATING FAULTS:**

- Lack of correct gender characteristics
  - Absence of a single or several incisors or canines; absence of a single or several premolars 3 or 4, or single or several molars 1 or 2. Anomalies in bite.
  - Ectropion, entropion; eyes too deep set or too small.
  - Distichiasis (eyelashes arranged in two rows)
  - Semi-pricked or pendulous ears
  - Kinky tail
  - Strong lack of pigment
  - Nervousness, shyness, excessive suspiciousness
  - Aggressiveness
  - **N.B.:** Male animals should have two apparently normal testicles fully descended into the scrotum.
-

**FAULTS**: Any departure from the foregoing points should be considered as a fault and the seriousness with which the fault should be regarded should be in exact proportion to its degree.









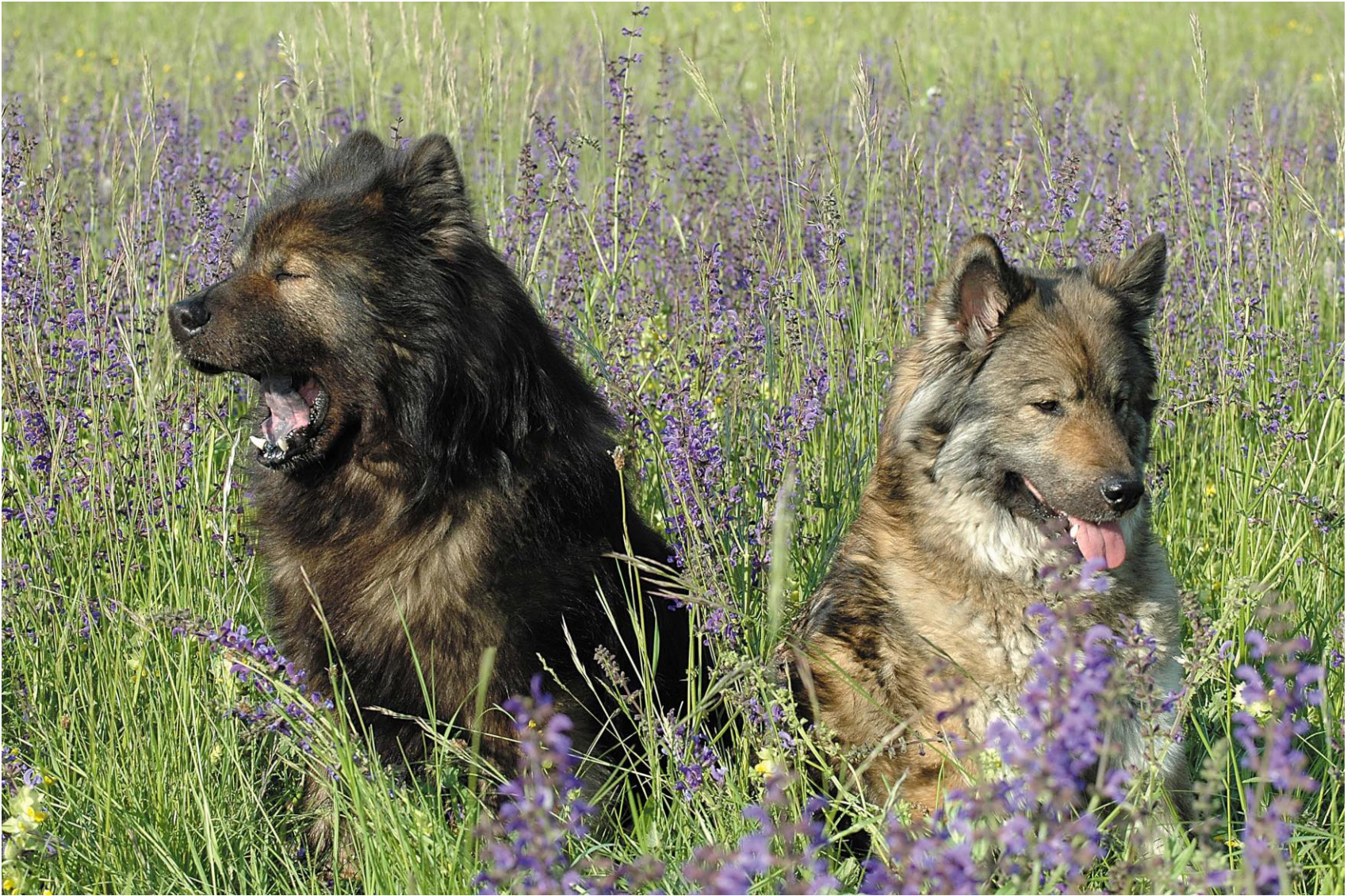


Photo Vorbeck

Have a nice time!