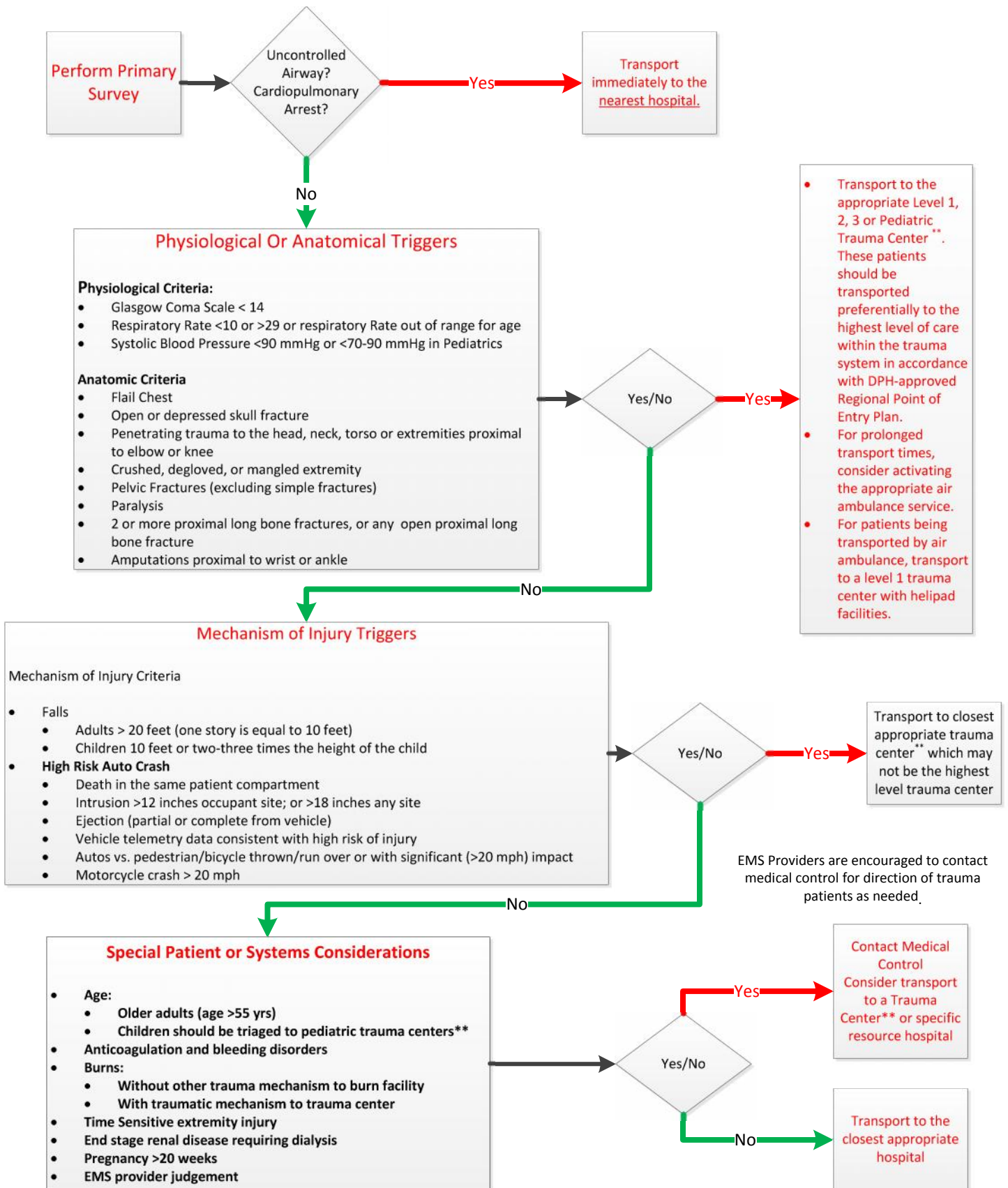


# Massachusetts Statewide Trauma Field Triage Criteria

Note: Additional pediatric-specific information can be found below  
 Early Notification of the receiving facility, even from the scene, will enhance patient care.



\*\* MDPH-Designated or ACS-verified if Out of State

Preconfigured response initiated/appropriate pre-arrival instructions given based on Local EMD.