

Rabbit Anti-ER [SP1]: RM0248, RM0248RTU7

Intended Use: For Research Use Only

Description: Estrogen Receptor Alpha (ER or ER Alpha) is a nuclear protein and member of the steroid hormone receptor family. ER alpha possesses both DNA binding and ligand binding domains, and exerts a significant role in activating the transcription of certain genes. Ligand-dependent dimerization and phosphorylation both function to regulate the transcriptional activation of ER alpha.

Specifications:

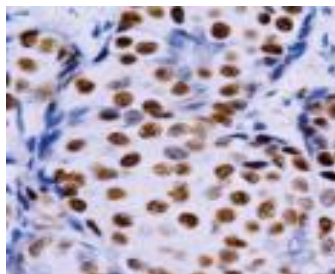
Clone: SP1
Source: Rabbit
Isotype: IgG
Reactivity: Human
Localization: Nucleus
Formulation: Antibody in PBS pH7.4, containing BSA and $\leq 0.09\%$ sodium azide (NaN₃)
Storage: Store at 2°- 8°C
Applications: IHC, Flow Cyt., ICC/IF, WB
Package:

| Description | Catalog No. | Size |
|-----------------|-------------|------|
| ER Concentrated | RM0248 | 1 ml |
| ER Prediluted | RM0248RTU7 | 7 ml |

IHC Procedure*:

Positive Control Tissue: Breast cancer
Concentrated Dilution: 25-100
Pretreatment: Citrate pH6.0, 15 minutes using Pressure Cooker, or 30-60 minutes using water bath at 95°-99°C
Incubation Time and Temp: 30-60 minutes @ RT
Detection: Refer to the detection system manual

* Result should be confirmed by an established diagnostic procedure.



FFPE human breast carcinoma stained with anti-ER using DAB

References:

1. TGF- β Stimulation of EMT Programs Elicits Non-genomic ER- α Activity and Anti-estrogen Resistance in Breast Cancer Cells. Tian M, et al. J Cancer Metastasis Treat 3:150-160, 2017.
2. Capturing tumor complexity in vitro: Comparative analysis of 2D and 3D tumor models for drug discovery. Stock K, et al. Sci Rep 6:28951, 2016.
3. Identifying a Highly-Aggressive DCIS Subgroup by Studying Intra-Individual DCIS Heterogeneity among Invasive Breast Cancer Patients. Pape-Zambito D, et al. PLoS One 9:e100488, 2014.