



2 x 5200 kw Solar Cogeneration Power Plant (GT08)

Gas Turbine:

Model number: Solar Taurus 60 Unit-1 version 7801S, Unit-2 version 7801SA
Rating Gas/Oil: 5500/5368 kw ISODRY
Serial number: Engine : Unit-1 1803T Unit-2: OHL-10-T4454
Package Assembly number: 2-73431 , Serial numbers TG03N21, TG03N22
Fuel: Natural gas/Diesel oil
Emission control: Solonox duel fuel

Generator:

Manufacturer: Alsthom brushless type, air cooled
KW/KVA: 4800 kw/6000 kva
Voltage: 12470 v-13800 v, 3 phase, 60 hz, 0.8 PF
Speed: 1800 rpm

HRSG:

Manufacturer: Rentech duct fired
Capacity: 50,000 lbs/hr
Pressure/Temp 450 psig/ 700° F

History:

Year Manufactured 2004 dismantled and ready to ship, last overhaul 2010. Gas turbine rebuilt 2016, Rentech boiler rebuilt 2016.

	Package		since Engine Rotation	
	hours	starts	Hours	starts
Unit-1	54963	476	24707	172
Unit-2	41015	438	8,837	81

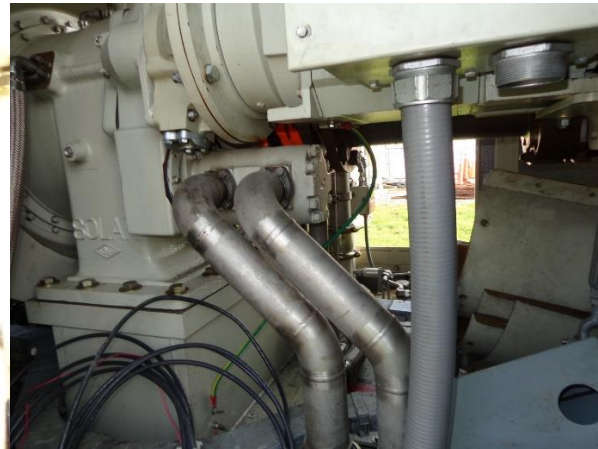
SCOPE OF SUPPLY

1. Two Gas turbine gear box generator skid, enclosed with unit mounted control panel.
2. Two Donaldson 90222-U02-02 36,000 cfm air intake system
3. Two - Rentech HRSG 50,000 lb/hr heat recovery steam generator (HRSG), Coen SCR's and any available associated Controls
4. Two Duct Burners Coen Duct Burner systems integrated within each HRSG. Includes (2) Coen skid mounted control panels.
5. Two Ammonia Transfer Pump Skids Pulsafeeder GMC4-ACT-TTF Serial No. Y8994112-1 1/2 HP magnetic pumps. Baldor motor. 0.5 HP / 480 V / 60 Hz. and any available associated controls. Approx.



- weight: 600 lbs. Controls - include any available associated controls.
6. Aqueous Ammonia Bulk Storage Tank Provide Dalworth Vertical Self-Supporting Aqueous Ammonia Storage Tank. CS Painted; Capacity 10,400 gallons; Serial #67984
 7. Two Ammonia Process Control Units Vector Systems, Inc DR6D89 process control unit. Blower motor: 480 V / 3 Phase / 60 Hz. Approx. weight: 3000 lbs. Control Panel
 8. Two Selective Catalyst Reduction (SCR) Description: Provide (2) selective catalyst reduction systems integrated within each HRSG
 9. Deaerator Provide DA tank with a Design pressure of 30 psi and an operating pressure of 15 psi and any available associated controls.
 10. Two Boiler Feedwater Pump Provide (1) Gould Model 3355 boiler feedwater pump with capacity rated at 600 gpm and any available associated controls.
 11. Two Condensate Pumps Gould Model 3410S condensate pumps with capacity rating of 600 gpm and any available associated controls
 12. Station Power Switch Gear
 13. Two Steel exhaust stacks.
 14. Two Silencers w/CHP system.
 15. Two Natural Gas Compressor Ariel JGN / 1-1 Serial No. L-61813 horizontal single throw natural gas compressor. 150 hp. 1186 RPM. 480 V. 3 Phase. 60 Hz. Industrial Process Equip Corp Serial No. 304-3879-2 gas cooler/reheater. Hemphill 42ZF; Aftercooler; Serial # 9517.1 / Serial # 9518.1 and any available associated controls
 16. Two Air Compressor Quincy 325 Serial No. 20040702-0175 / 0174 single-acting 2- stage reciprocating air compressor. 15 cfm. 250 psig. 2004 Toshiba / TEFC motor. 480 V / 3 Phase / 60 Hz. 200-gallon receiver constructed to ASME code / 300 psig. and any available associated controls FLV
 17. Two Exhaust Fan Greenheck CUBE-360HP-50X Serial No. 04LO7995 belt driven centrifugal exhaust fan. 14,690 cfm. Max fan speed 755 RPM. Backward inclined wheel type. TEFC Motor. 1750 RPM. 480 V / 3 Phase / 60 Hz. and any available associated controls and starters
 18. Support Steel/Catwalks/Grating for HRSG's, Stacks, and all CHP Equipment.
 19. Ductwork associated with the plant.

NSV Energy LLC
35 Hickory Springs Industrial Drive
Canton GA 30115



NSV Energy LLC
35 Hickory Springs Industrial Drive
Canton GA 30115

