

80 EX (3')



80 LX (2')



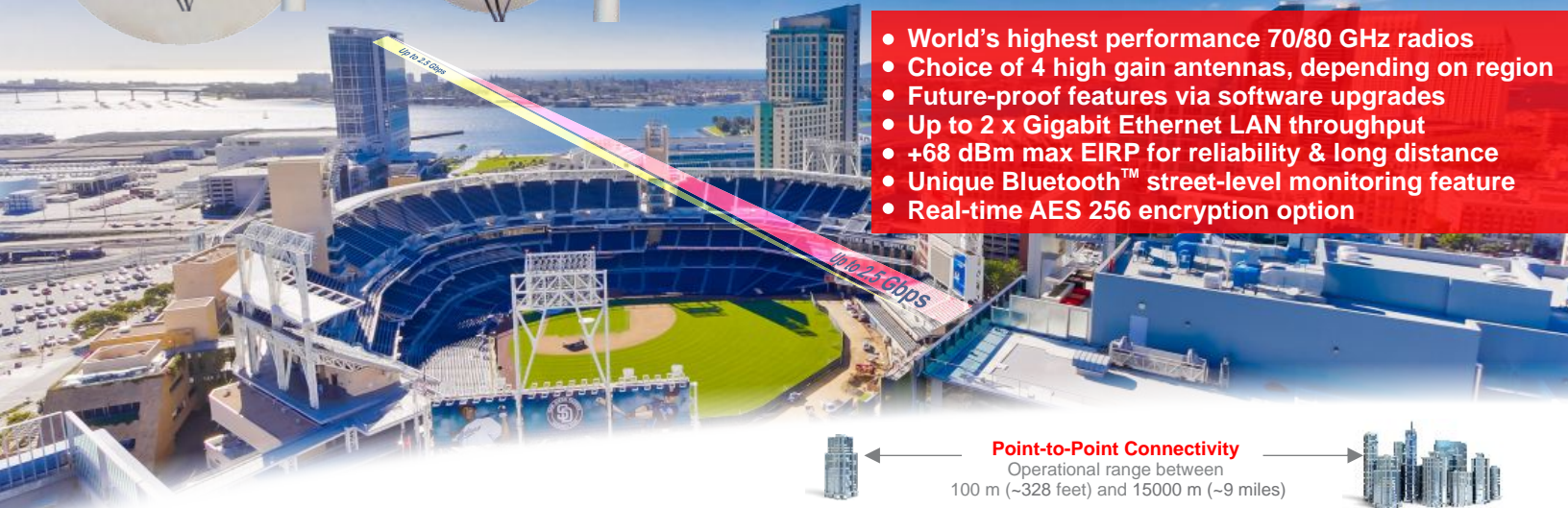
80 MX (1')



80 SX (8")



80 TANDEM (1', 2', 3')



- World's highest performance 70/80 GHz radios
- Choice of 4 high gain antennas, depending on region
- Future-proof features via software upgrades
- Up to 2 x Gigabit Ethernet LAN throughput
- +68 dBm max EIRP for reliability & long distance
- Unique Bluetooth™ street-level monitoring feature
- Real-time AES 256 encryption option



Next Generation 70 & 80 GHz Point-to-Point Radios

LightPointe's AireLink® wireless millimeter wave radios are designed for enterprise building-to-building/campus connectivity, ISPs, security camera backhaul networks, and mobile wireless service providers seeking fiber like multi-gigabit backhaul capacity. These highly affordable advanced backhaul radios can be equipped with four high gain parabolic antennas of different sizes for shorter and longer distance applications. AireLink radios are available with built-in Bluetooth street level remote link/performance monitoring, a unique LightPointe feature, and include optional real-time and full line speed AES 256 encryption.

And thanks to LightPointe's innovative and flexible software license upgrade feature, the customer has the option to customize feature sets at time of purchase or later as the needs of their particular network evolve. This makes the AireLink 80 a safe, long-term future proof investment.

Enterprise & Carrier Applications

- Fiber-like long distance building connectivity for schools, businesses, government buildings and hospitals—without trenching/installing fiber or the recurring costs of leased-line alternatives.
- 4G/5G LTE macro and small cell mobile backhaul.
- Disaster recovery/emergency communications restoration.
- Digital video and video surveillance connectivity.
- Remote storage access.
- Local Area Network extension.
- Military theater of operations/base connectivity.

Advanced Features

- High speed full-duplex up to 2.5 Gbps with low latency (<40 μs).
- Flexible connections, PoE, & helpful LED indicators.
- Data transmission using industry leading 9 levels of Adaptive Coding & Modulation (ACM).
- "Future proof" anytime remote feature upgrades.
- Real-time full Line Speed FIPS AES 256 encryption option.
- Fully Integrated street-level Bluetooth™ link monitoring app.
- Choice of fiber optic or copper interfaces.
- Unparalleled ease of installation, alignment, & operation.
- Transmission power control for short distance deployments.
- Redundant power supplies.
- Compact & aesthetic design for sensitive installations.



USA manufacturing efficiency & value combined with precision German engineering

AireLink 80 SX

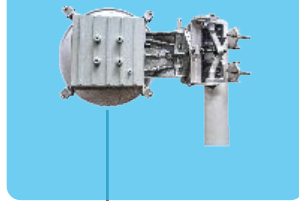
(8" inch / 20cm)
** Only available in ETSI countries



Up to ~2.5 miles (4000 m)

AireLink 80 MX

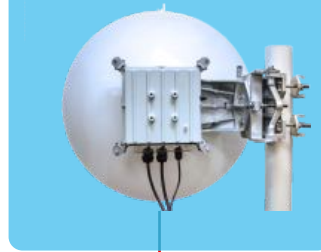
(1' foot / 30cm Antenna)



Up to ~3.7 miles (6000 m)

AireLink 80 LX

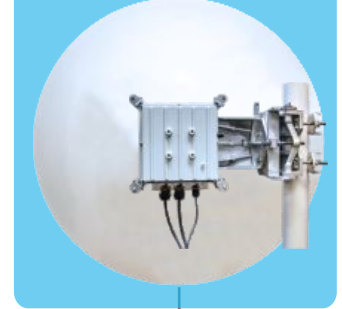
(2' foot / 60cm Antenna)



Up to ~6 miles (10000 m)

AireLink 80 EX

(3' foot / 90cm Antenna)



Up to ~9 miles (15000 m)

ODU (Outdoor Unit)

Model	AireLink 80 SX	AireLink 80 MX	AireLink 80 LX	AireLink 80 EX
Frequency range	71-76/81-86 GHz (E-band)			
Data Throughput	2 Gbps aggregated (1 Gbps Full duplex)			
Channel Bandwidths	250*...2000 MHz, ETSI compliant 250 MHz frequency grid			
Link Adaptation/Modulation	9 level Hitless Automatic Coding & Modulation (ACM) / 64QAM*, 16QAM, QPSK, BPSK			
Transmission Power	+14 dBm (max.)			
System Latency	< 40 μ s + (distance in meters/300)			
Max. Frame Size	Jumbo frames up to 10K			
Data Network Interface	RJ-45 (100/1000 Base TX), MM/SM Fiber SFP (1000Base-SX/LX)			
Ethernet Protocol	Layer Two Transparent Ethernet, Flow Control 802.3x			
Forward Error Correction	LDPC; Reed Solomon			
Radio Management	Web based, Telnet Command Interface/CLI, SNMP v1/2c, RS232 micro USB, Loopback op			
Management Interface	RJ-45 (10/100 Base TX) , RS232 Console port (micro USB)			
Encryption	Optional AES 256 (FIPS compliant)			
RSSI Alignment Port	External Ip67 connector			
Performance Recording	On board data collect/TFTP upload			
Bluetooth™ Monitoring	Optional street-level monitoring via smartphone app and internal Bluetooth antenna			

Power/Environment

Voltage	(36...57) Vdc; Reverse polarization protection; Optional back-to-back power redundancy
Power Consumption	32 Watts max
Connector IP Rating	IP-66
Operational Temperature	-35°C to +60°C (-31 F to +140 F)
Humidity	95%, non condensing

Antennas

Antenna Type	AireLink 80 SX	AireLink 80 MX	AireLink 80 LX	AireLink 80 EX
Antenna Type	Cassegrain (integrated)	Cassegrain (external)	Cassegrain (external)	Cassegrain (external)
Antenna Size	8" (20 cm)**	1' (30cm)	2' (60cm)	3' (90cm)
Antenna Gain	41 dBi	45 dBi	51 dBi	54 dBi
Beam Width	1.3°	0.8°	0.5°	0.3°
Polarization	Horizontal/Vertical			

Physical Dimensions

Outdoor Unit Size w/o Antenna	220x220x70mm (enclosure w/o ant & mount bracket)
-------------------------------	--

* Future software update. **8" antenna can only be used in ETSI countries.
Note: Distance estimates are subject to location and availability requirements.
Note: "Tandem"/dual radio 2.5 Gbps systems are not shown.

LightPointe Communications, Inc.
8515 Arjons Drive, Suite G
San Diego, CA 92126
Sales@LightPointe.com
www.LightPointe.com

LIGHTPOINTE
WIRELESS FIBER — POINT TO POINT BACKHAUL



+1 858-863-0337