



**Port of Arlington
AGENDA
5:00 pm
Tuesday, October 13, 2020
Meeting Location:
Port of Arlington
100 Port Island Road**

1. **Call meeting to order**
2. **Public Comment on non-agenda items**
3. **Consent Agenda:**
 - Approval of September 15, 2020 Commission meeting minutes
 - Approval of September 2020 payables
 -
4. **Presidents Report** – Thanksgiving turkeys or ham for staff
5. **Commissioner's Reports** –
6. **Economic Development** –
 - 6.1 Flex Building Update
 - 6.2 Bathroom Replacement Update
 - 6.3 Island Park Update
7. **Administration**
 - 7.1 Solutions CPA's Inc. Audit Draft

If necessary, an Executive Session may be held in accordance with ORS 192.660(2)

Upcoming Meetings:

Regular Commission Meeting on Tuesday, November 10, 2020 at 5pm – Port of Arlington, Arlington, Or.

This meeting location is accessible to persons with disabilities. A request for an interpreter for the hearing impaired or for other accommodations for persons with disabilities should be made at least 48 hours before the meeting by contacting Kelly.margheim@portofarlington.com / 541-454-2868

Posted: Tuesday, October 6, 2020: Bank of Eastern Oregon - Condon & Arlington; U.S. Post Office - Condon & Arlington; Condon Times-Journal; Arlington City Hall; Port Office and Website.

PO Box 279, Arlington, Oregon 97812

**Regular Commission Meeting
MINUTES
Port of Arlington
September 15, 2020
5 p.m.
Port Of Arlington**

- 1. The Port of Arlington Commission meeting was called to order at 5:00 pm by President Wilson.**

Those Present: President Wilson; Commissioner McGuire; Vice President Kennedy; Port Manager/ Economic Development Officer, Peter Mitchell; Admin. Asst., Kelly Margheim; Attorney Ruben Cleaveland;

Absent: Commissioner Hunking

Audience: Paul Jayo; Phil Newman

- 2. Public Comment on non-agenda items - None**

- 3. Consent Agenda:**

- Approval of August 11, 2020 Commission Meeting Minutes
- Approval of August 2020 Payables and Financials
Vice President Kennedy moved to approve the consent agenda and Commissioner McGuire seconded. The motion carried 3-0

- 4. Presidents Report:** President Wilson presented an email from Judge Farrar. Judge Farrar asks that the Port Board submit two or three moderator candidates. The consensus of the Board is to have Admin. Asst. Margheim email Judge Farrar with names.

- 5. Commissioner Reports:** None

- 6. EDO Report**

6.1 EDO Mitchell again wanted to say how good of a job Tyler Bufton did this summer as part of the Port's summer maintenance crew. Tyler completed numerous projects for the Port including installing reservation post, painting parking lines, re-installing landscaping stones, in addition to his regular chores of mowing and maintaining Port facilities.

EDO Continued:

Watco's new Depot building is complete and they are moved in. The company has successfully renegotiated a new contract with Union Pacific. They will continue on as the short line rail operator. There will be a ribbon cutting in the future.

EDO Mitchell stated that Paul Jayo is ready for the next phase of moving forward on the Flex building and needs to obtain a conditional use permit. After meeting with DEQ Paul is very confident that an Auto Mall / green renewable recycle center will be very beneficial and will create at least six new jobs to the community. Pillar Consulting has submitted a proposal of \$5,150 for the site plan to submit to the planning commission. After some discussion Commissioner Shaffer moved to approve Pillar Consulting to perform the site plan engineering in the amount of \$5,150 with the stipulation that the plan come before the Port Board before submitting to the planning commission and Vice President Kennedy seconded. The motion carried 3-1.

EDO Mitchell introduced Phil Newman with Mainstem Malt and discussed his interest in constructing his firms malting facility in Arlington. Island Park is a great area to build this facility. EDO Mitchell presented a proposal from Pillar Consulting for a schematic design and cost opinion. A second quote was received from Livermore Architecture and Engineering, Inc

Break for Dinner: 6:12 pm

Reconvene to Regular Session at 6:32 pm

Island Park discussion resumed;
More details will follow as project development costs are available. Vice President Kennedy moved to approve Pillar Consulting to perform a schematic design services associated with a malting operation on Island Park in the amount of \$3,550 and Commissioner McGuire seconded. The motion passed 4-0

EDO Mitchell stated that the Port was awarded \$278,751.06 grant from the Oregon State Marine Board for the bathroom replacement project and parking lot improvement and is contingent upon the Port increasing its match amount by \$75,000 for a total of \$226,893.26. Pillar Consulting submitted a bid for \$30,635 for engineering of the project. Commissioner Shaffer moved to approve Pillar Consulting to perform Engineering for the project in the amount of \$30,635 and Commissioner McGuire seconded. The motion carried 4-0

7. Administration

7.1 Administrative Assistant Margheim stated that Solutions has performed the Ports audit and should have finalized documentation at the October meeting.

Meeting adjourned at 7:15 pm

President Ron Wilson

Vice President Kennedy

Port Manager/ Economic Development Report October 13, 2020

The Port of Arlington's mission is to *support the creation, retention, expansion, and recruitment of businesses and jobs that will enhance the economy and quality of life of Gilliam County.*

Administration

The Port's auditor has released a draft of their audit of the Port's books.

Economic Development

The promising prospect for the flex building has withdrawn his interest in renting the facility. The Port is actively seeking tenants for this 6,000' square foot flexible space building. Lease space from 1,000 – 6,000 is available for lease. Water, sewer, 3-phase power, and fiber internet installed.



Island Park

The Port's emphasis on developing plans to expand infrastructure to Island Park is paying off. As a result of these conceptual expansion plans on an excellent water front location a tenant prospect has

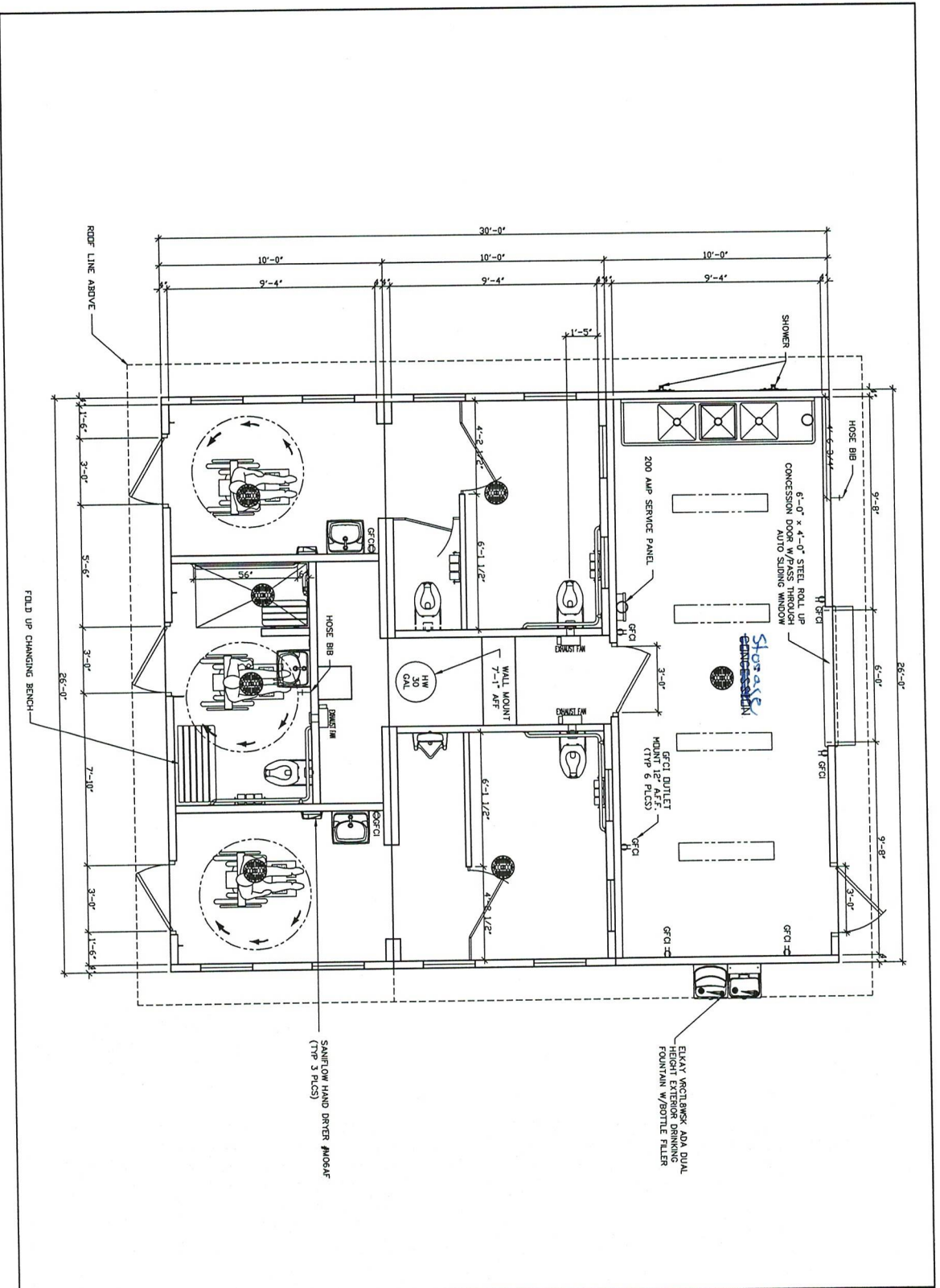
expressed interest in locating their firm's manufacturing facility in Arlington. More details will follow pending engineer's site plan refinements.

RV and Marina

The Port was awarded a \$278,751.06 grant from the Oregon State Marine Board for the Bathroom replacement and Parking lot improvement project contingent upon the Port increasing its' match amount by \$75,000 for a total of \$226,893.26. The new restroom with showers will serve the cruising boaters, RV and marina users, wind surfer/kite boarders, walkers and boat ramp users. Updating the parking area to meet current design standards will improve boater experience. Separating nonmotorized boating use from the launch ramp and designating gravel single car parking will encourage use by kayakers and stand up paddleboarders.

Up Coming Dates:

- October 08 – Arlington TV-Coop, 6 p.m.
- October 12 – Columbus Day
- October 13 –Port's Board Meeting, Port Office bldg. Arlington, 5 p.m.
- October 16 – Bi-State Recreation
- October 20 – Candidates Forum, Gronquist Building, 6 p.m.
- October 22 – Pioneer CDC, virtual meeting, 2 p.m.



PRECAST PRODUCTS
 501 N. Highway 77, Houston, TX 77062
 282 Beverly Road, Westborough, MA 01581

SANTILICO
 BUILDING NUMBER 20-048P

FLOOR PLAN

DATE	NO.	DESCRIPTION
11-10-78	1	ISSUED FOR PERMITS
1-10-79	2	REVISED TO SHOW CHANGES
1-10-79	3	REVISED TO SHOW CHANGES
1-10-79	4	REVISED TO SHOW CHANGES
1-10-79	5	REVISED TO SHOW CHANGES
1-10-79	6	REVISED TO SHOW CHANGES
1-10-79	7	REVISED TO SHOW CHANGES
1-10-79	8	REVISED TO SHOW CHANGES
1-10-79	9	REVISED TO SHOW CHANGES
1-10-79	10	REVISED TO SHOW CHANGES

PROJECT NO. S-03

3

35

PORT OF ARLINGTON
YTD Income & Expense vs. Budget
 YTD

	Jul '20 - Jun 21	Budget	% of Budget
Ordinary Income/Expense			
Income			
GENERAL FUND RESOURCES			
4000 · Carryover Balance	0.00	1,479,250.00	0.0%
4010 · Taxes-Current	453.75	122,000.00	0.4%
4011 · Taxes-Prior	929.75	500.00	186.0%
4020 · Interest - NOW Checking	9.28	0.00	100.0%
4021 · Interest - Best A/C	502.28	0.00	100.0%
4022 · Interest - LGIP A/C	2,419.80	10,000.00	24.2%
4030 · Land Rental	1,000.00	16,000.00	6.3%
4050 · Grain Elevator Lease Pymt	111,659.73	111,659.00	100.0%
4110 · Grants Income			
4111 · OSMB Grant	0.00	353,760.00	0.0%
4113 · Gilliam County Grant	0.00	213,000.00	0.0%
4114 · Unanticipated Grant Funds	0.00	100.00	0.0%
4120 · MAPS Grant	7,000.00	7,000.00	100.0%
4110 · Grants Income - Other	0.00	0.00	0.0%
Total 4110 · Grants Income	7,000.00	573,860.00	1.2%
4210 · Marina Revenue	2,330.00	5,000.00	46.6%
4211 · RV Park Revenues			
4211-1 · RV Park Monthly Rent	9,975.00	0.00	100.0%
4211-2 · RV Park Weekly Rent	380.00	0.00	100.0%
4211-3 · RV Park Daily Rent	4,795.00	0.00	100.0%
4211-4 · RV Park Dry Camp	1,501.50	0.00	100.0%
4211 · RV Park Revenues - Other	0.00	40,000.00	0.0%
Total 4211 · RV Park Revenues	16,651.50	40,000.00	41.6%
4213 · Marina Fuel Revenue			
4213-2 · Gasoline Sales	5,762.90	0.00	100.0%
4213-1 · Diesel Sales	464.05	0.00	100.0%
4213 · Marina Fuel Revenue - Other	0.00	12,000.00	0.0%
Total 4213 · Marina Fuel Revenue	6,226.95	12,000.00	51.9%
4214 · Marina Power and Water Revenue	130.00	250.00	52.0%
4340 · Willow Creek Rock Sales	19,049.28	40,000.00	47.6%
4350 · Willow Creek Lease Revenue	0.00	0.00	0.0%
4400 · Donations/Gifts	0.00	100.00	0.0%
4500 · Miscellaneous Income	80.00	100.00	80.0%
Total GENERAL FUND RESOURCES	168,442.32	2,410,719.00	7.0%
5000 · ECONOMIC DEVELOP FUND RESOURCES			
5034 · Taxes Collected for the Hanger	327.00	1,275.00	25.6%
5005 · Carryover (cash basis)	0.00	248,600.00	0.0%
5031 · Building Lease 11-002	22,800.00	93,936.00	24.3%
5032 · Building Lease 11-004	3,750.00	15,000.00	25.0%
5033 · Flex Bldg Lease	0.00	1,000.00	0.0%
5113 · Grants - Gilliam County	20,000.00	100,000.00	20.0%
5114 · Unanticipated Grant Funds	0.00	1,000.00	0.0%
5116 · Grants - Other	0.00	7,800.00	0.0%
5130 · SIP Funds	0.00	25,000.00	0.0%
5600 · Transfer from General Fund	0.00	0.00	0.0%
Total 5000 · ECONOMIC DEVELOP FUND RESOUR...	46,877.00	493,611.00	9.5%
RESERVE FUND RESOURCES			
9000 · Reserve Fund Beginning Balance	0.00	65,310.94	0.0%
9001 · Transfer from General Fund	0.00	11,650.00	0.0%
9002 · Interest Earned Reserve Fund	142.70	400.00	35.7%
Total RESERVE FUND RESOURCES	142.70	77,360.94	0.2%
Total Income	215,462.02	2,981,690.94	7.2%

PORT OF ARLINGTON
YTD Income & Expense vs. Budget
YTD

	Jul '20 - Jun 21	Budget	% of Budget
Expense			
6560 · Payroll Expenses	0.00	0.00	0.0%
GENERAL FUND EXPENSES			
ADMINISTRATION EXPENSES			
6000 · Personal Services - AD			
6008 · Port Manager	5,775.48	24,700.00	23.4%
6009 · Administrative Assistant	9,256.14	37,200.00	24.9%
6011 · Payroll Taxes - Staff	1,205.35	6,200.00	19.4%
6012 · Training	0.00	500.00	0.0%
6013 · Workmens Compensation	175.00	250.00	70.0%
6015 · Employee Benefits Insurance	6,575.28	32,250.00	20.4%
6016 · Employee Benefits Retirement	1,803.80	9,100.00	19.8%
Total 6000 · Personal Services - AD	24,791.05	110,200.00	22.5%
6100 · Materials and Services - AD			
6111 · Utilities	132.00	3,700.00	3.6%
6112 · Office Supplies and Equipment	786.49	3,500.00	22.5%
6113 · Legal Fees	1,362.50	12,000.00	11.4%
6114 · Insurance, Treasurer Bond	120.00	500.00	24.0%
6115 · Dues, Subscriptions, Fees			
6115-1 · Credit Card Fees	876.74	3,800.00	23.1%
6115 · Dues, Subscriptions, Fees - Other	262.85	7,000.00	3.8%
Total 6115 · Dues, Subscriptions, Fees	1,139.59	10,800.00	10.6%
6116 · Audit, Budget, Legal Notices	3,000.00	10,000.00	30.0%
6117 · Telephone and Internet Srv.	341.43	3,000.00	11.4%
6118 · Advertising - AD	560.25	250.00	224.1%
6119 · Commissioner Fees/Expenses	134.40	3,000.00	4.5%
6120 · Medi/SS for Commissioners	0.00	300.00	0.0%
6121 · Donations	150.00	1,000.00	15.0%
6122 · Meetings and Elections	0.00	2,000.00	0.0%
6123 · Miscellaneous - AD	374.84	200.00	187.4%
6124 · Consultant Services	0.00	2,000.00	0.0%
6126 · Contingency	0.00	156,759.00	0.0%
6127 · Commissioner Conference & Trave	172.95	3,000.00	5.8%
6128 · Staff Travel/Food/Lodging	0.00	500.00	0.0%
6129 · Postage	21.00	1,000.00	2.1%
6130 · Bad Debt Write Off	0.00	100.00	0.0%
6100 · Materials and Services - AD - Other	244.46		
Total 6100 · Materials and Services - AD	8,539.91	213,609.00	4.0%
6170 · Transfers Out of General Fund	0.00	11,650.00	0.0%
Total ADMINISTRATION EXPENSES	33,330.96	335,459.00	9.9%
ECONOMIC DEVELOPMENT	0.00	0.00	0.0%
ISLAND PARK			
6600 · Personal Services			
6610 · Maintenance Person	5,626.35	13,500.00	41.7%
6611 · Payroll Taxes	440.80	850.00	51.9%
6612 · Worker's Comp Insurance	19.00	500.00	3.8%
Total 6600 · Personal Services	6,086.15	14,850.00	41.0%

PORT OF ARLINGTON
YTD Income & Expense vs. Budget
 YTD

	Jul '20 - Jun 21	Budget	% of Budget
6620 · Materials & Services			
6621 · Water Fees	0.00	1,200.00	0.0%
6622 · Sanitation	92.00	1,000.00	9.2%
6623 · Comfort Station Supplies	970.83	1,800.00	53.9%
6624 · Park Electricity	347.06	1,500.00	23.1%
6625 · Pest Control / Chem & Fert.	0.00	200.00	0.0%
6626 · Insurance	0.00	2,000.00	0.0%
6627 · Park Maintenance & Supplies	38.22	2,800.00	1.4%
6628 · Miscellaneous	0.00	100.00	0.0%
Total 6620 · Materials & Services	1,448.11	10,600.00	13.7%
6630 · Capital Outlay			
6636 · Marine Board Grant Match	0.00	142,350.00	0.0%
6635 · Grant Match Isl.Erosion Repair	0.00	76,000.00	0.0%
6634 · Grant Island Erosion Repair	0.00	353,760.00	0.0%
6631 · Park Improvements	0.00	200,000.00	0.0%
6632 · Engineering & Surveying	0.00	20,000.00	0.0%
6633 · Park Equipment	0.00	213,000.00	0.0%
Total 6630 · Capital Outlay	0.00	1,005,110.00	0.0%
Total ISLAND PARK	7,534.26	1,030,560.00	0.7%
MARINA			
6700 · Personal Services			
6710 · Maintenance Person	312.47	3,900.00	8.0%
6711 · Payroll Taxes	24.93	350.00	7.1%
6712 · Worker's Comp Insurance	35.00	60.00	58.3%
Total 6700 · Personal Services	372.40	4,310.00	8.6%
6720 · Materials & Services			
6721 · Marina Electricity	533.68	4,500.00	11.9%
6722 · OMB Repairs - 1/2 MAPS	0.00	2,000.00	0.0%
6723 · Insurance	0.00	2,600.00	0.0%
6724 · Marina Maint. & Supplies	596.17	5,000.00	11.9%
6725 · Miscellaneous	0.00	500.00	0.0%
6726 · Contractural Services	0.00	0.00	0.0%
6727 · Marina Fuel			
6727-1 · Marina Gas	4,369.72	0.00	100.0%
6727 · Marina Fuel - Other	1,858.79	16,000.00	11.6%
Total 6727 · Marina Fuel	6,228.51	16,000.00	38.9%
Total 6720 · Materials & Services	7,358.36	30,600.00	24.0%
6730 · Captial Outlay			
6733 · Marina Equipment	0.00	29,000.00	0.0%
Total 6730 · Captial Outlay	0.00	29,000.00	0.0%
Total MARINA	7,730.76	63,910.00	12.1%
RV PARK EXPENSES			
6300 · Personal Services - RV			
6310 · Maintenance Person - RV	312.47	3,300.00	9.5%
6311 · Payroll Taxes, Maintenance - RV	24.92	500.00	5.0%
6312 · Workmens Compensation - RV	159.00	240.00	66.3%
Total 6300 · Personal Services - RV	496.39	4,040.00	12.3%

PORT OF ARLINGTON
YTD Income & Expense vs. Budget
YTD

	Jul '20 - Jun 21	Budget	% of Budget
6320 · Materials & Services - RV			
6321 · Water Fees - RV	777.20	4,000.00	19.4%
6322 · Sanitation - RV	170.00	2,000.00	8.5%
6323 · Electricity - RV Park	1,507.15	9,000.00	16.7%
6324 · WIFI - RV	294.07	1,000.00	29.4%
6325 · Advertising - RV	0.00	1,000.00	0.0%
6326 · Maintenance & Supplies - RV	456.58	3,000.00	15.2%
6327 · Insurance - RV	0.00	1,800.00	0.0%
6328 · Misc. - RV	0.00	250.00	0.0%
6329 · Sewer	933.08	4,000.00	23.3%
Total 6320 · Materials & Services - RV	4,138.08	26,050.00	15.9%
6340 · Capital Outlay - RV			
6341 · RV Park Const Improv	0.00	60,000.00	0.0%
6343 · Grant Match	0.00	8,000.00	0.0%
6344 · RV Park Equipment	0.00	80,000.00	0.0%
Total 6340 · Capital Outlay - RV	0.00	148,000.00	0.0%
Total RV PARK EXPENSES	4,634.47	178,090.00	2.6%
WILLOW CREEK QUARRY			
6520 · Materials & Services - WQ			
6523 · Miscellaneous - WQ	2,063.00	2,000.00	103.2%
6524 · Travel	0.00	100.00	0.0%
Total 6520 · Materials & Services - WQ	2,063.00	2,100.00	98.2%
6540 · Capital Outlay - WQ			
6542 · Engineering & Surveying	0.00	50,000.00	0.0%
6540 · Capital Outlay - WQ - Other	0.00	747,900.00	0.0%
Total 6540 · Capital Outlay - WQ	0.00	797,900.00	0.0%
Total WILLOW CREEK QUARRY	2,063.00	800,000.00	0.3%
Total GENERAL FUND EXPENSES	55,293.45	2,408,019.00	2.3%
8400 · ECON.DEVELOP.FUND EXPENSES			
PERSONNEL SERVICES			
8410 · Officer	17,326.40	70,760.00	24.5%
8410-1 · Admin. Asst. 1/3	4,768.32	19,400.00	24.6%
8410-2 · Lab Technician	0.00	0.00	0.0%
8411 · Payroll Taxes	1,700.68	9,800.00	17.4%
8412 · Worker's Comp Ins.	151.32	300.00	50.4%
8413 · Employee Benefits - Insurance	7,875.90	31,100.00	25.3%
8414 · Employee Benefits - Retirement	2,651.34	10,500.00	25.3%
Total PERSONNEL SERVICES	34,473.96	141,860.00	24.3%
MATERIALS AND SERVICES			
8421 · Travel/Food/Lodging	320.78	6,000.00	5.3%
8422 · Training/Seminars/Conventions	0.00	3,000.00	0.0%
8423 · Legal Fees	857.50	15,000.00	5.7%
8424 · Office Supplies & Equipment	0.00	2,000.00	0.0%
8424-3 · Consultant	0.00	4,000.00	0.0%
8425 · Utilities	1,615.46	2,800.00	57.7%
8426 · Advertising & Marketing	6,612.00	80,000.00	8.3%
8426-1 · Dues & Subscriptions	6.00	500.00	1.2%
8426-2 · A Town Throw Down	0.00	2,000.00	0.0%
8427 · Telephone & Internet Service	448.54	2,500.00	17.9%
8428 · Website Develop. & Maint.	0.00	500.00	0.0%
8429 · Building Insurance	0.00	9,000.00	0.0%
8430 · City of Arlington Insitu Lease	5,400.00	21,600.00	25.0%
8430-2 · Grant Match	0.00	1,000.00	0.0%
8430-3 · Business Start Up Program	224.84	40,000.00	0.6%

8:39 AM

10/02/20

Cash Basis

PORT OF ARLINGTON
YTD Income & Expense vs. Budget
YTD

	Jul '20 - Jun 21	Budget	% of Budget
8430-4 · Property Taxes	0.00	1,275.00	0.0%
8439 · Contingency	0.00	26,429.00	0.0%
Total MATERIALS AND SERVICES	15,485.12	217,604.00	7.1%
CAPITAL OUTLAY			
8431 · Land Improvements/Development	1,661.31	17,000.00	9.8%
8432 · Engineering & Surveying	0.00	45,000.00	0.0%
8435 · Building Construction	26.97	60,000.00	0.0%
Total CAPITAL OUTLAY	1,688.28	122,000.00	1.4%
DEBT SERVICE			
8441 · Loan - Principal	2,388.95	9,630.00	24.8%
8442 · Loan - Interest	647.05	2,517.00	25.7%
Total DEBT SERVICE	3,036.00	12,147.00	25.0%
Total 8400 · ECON.DEVELOP.FUND EXPENSES	54,683.36	493,611.00	11.1%
RESERVE FUND EXPENSES			
9500 · Repair, Maint., Grant Match	0.00	76,759.00	0.0%
Total RESERVE FUND EXPENSES	0.00	76,759.00	0.0%
Total Expense	109,976.81	2,978,389.00	3.7%
Net Ordinary Income	105,485.21	3,301.94	3,194.6%
Net Income	105,485.21	3,301.94	3,194.6%

PORT OF ARLINGTON

Deposit Detail

September 2020

Type	Num	Date	Name	Account	Amount
Deposit		09/08/2020		1001 - Bank of E...	9,355.00
			Cash Sales	4211-1 · RV Park...	-525.00
			Cash Sales	4210 · Marina Re...	-320.00
			Cash Sales	4211-1 · RV Park...	-525.00
			Cash Sales	4210 · Marina Re...	-60.00
			Cash Sales	4211-3 · RV Park...	-35.00
			Cash Sales	4211-3 · RV Park...	-35.00
			Cash Sales	4211-3 · RV Park...	-35.00
			Cash Sales	4211-3 · RV Park...	-35.00
			Cash Sales	4211-4 · RV Park...	-10.00
			Cash Sales	4211-4 · RV Park...	-10.00
			Cash Sales	4211-4 · RV Park...	-10.00
			Cash Sales	4211-4 · RV Park...	-10.00
			Cash Sales	4211-3 · RV Park...	-35.00
			Cash Sales	4211-4 · RV Park...	-20.00
			Cash Sales	4211-4 · RV Park...	-10.00
			Cash Sales	4211-4 · RV Park...	-10.00
			Cash Sales	4211-4 · RV Park...	-10.00
			Cash Sales	4211-3 · RV Park...	-35.00
			Cash Sales	4211-4 · RV Park...	-10.00
			Cash Sales	4211-4 · RV Park...	-120.00
			Cash Sales	4211-4 · RV Park...	-10.00
			Cash Sales	4211-4 · RV Park...	-10.00
			Cash Sales	4211-3 · RV Park...	-35.00
			Cash Sales	4211-3 · RV Park...	-35.00
			Cash Sales	4211-3 · RV Park...	-70.00
			Cash Sales	4211-4 · RV Park...	-10.00
			Cash Sales	4211-4 · RV Park...	-10.00
			Cash Sales	4211-4 · RV Park...	-10.00
			Cash Sales	4211-4 · RV Park...	-20.00
			Cash Sales	4211-3 · RV Park...	-35.00
			Cash Sales	4211-4 · RV Park...	-10.00
			Cash Sales	4211-4 · RV Park...	-10.00
			Cash Sales	4211-4 · RV Park...	-40.00
			Cash Sales	4211-4 · RV Park...	-10.00
			Cash Sales	4211-4 · RV Park...	-10.00
			Cash Sales	4211-4 · RV Park...	-20.00
			Cash Sales	4211-3 · RV Park...	-35.00
			Cash Sales	4211-4 · RV Park...	-10.00
			Cash Sales	4211-4 · RV Park...	-20.00
			Cash Sales	4211-4 · RV Park...	-10.00
			Cash Sales	4211-3 · RV Park...	-35.00

\$23,477.19

PORT OF ARLINGTON
Deposit Detail
 September 2020

Type	Num	Date	Name	Account	Amount
			State of Oregon	4120 · MAPS Grant	-7,000.00
			Cash Sales	4211-3 · RV Park...	-30.00
TOTAL					-9,355.00
Deposit		09/08/2020		1001 · Bank of E...	219.86
			Heartland Payme...	4213-2 · Gasoline...	-190.93
			Heartland Payme...	6115-1 · Credit C...	5.19
			Heartland Payme...	4211-3 · RV Park...	-35.00
			Heartland Payme...	6115-1 · Credit C...	0.88
TOTAL					-219.86
Deposit		09/08/2020		1001 · Bank of E...	837.43
			Heartland Payme...	4213-2 · Gasoline...	-318.49
			Heartland Payme...	6115-1 · Credit C...	4.90
			Heartland Payme...	4211-3 · RV Park...	-525.00
			Heartland Payme...	6115-1 · Credit C...	1.16
TOTAL					-837.43
Deposit		09/08/2020		1001 · Bank of E...	305.38
			Heartland Payme...	4213-2 · Gasoline...	-170.89
			Heartland Payme...	6115-1 · Credit C...	3.70
			Heartland Payme...	4211-3 · RV Park...	-140.00
			Heartland Payme...	6115-1 · Credit C...	1.81
TOTAL					-305.38
Deposit		09/10/2020		1001 · Bank of E...	33.50
			Heartland Payme...	4213-2 · Gasoline...	-33.78
			Heartland Payme...	6115-1 · Credit C...	0.28
TOTAL					-33.50

PORT OF ARLINGTON

Deposit Detail

September 2020

Type	Num	Date	Name	Account	Amount
Deposit		09/14/2020		1001 · Bank of E...	295.89
			Heartland Payme...	4213-2 · Gasoline...	-240.73
			Heartland Payme...	6115-1 · Credit C...	3.51
			Heartland Payme...	4210 · Marina Re...	-60.00
			Heartland Payme...	6115-1 · Credit C...	1.33
TOTAL					-295.89
Deposit		09/14/2020		1001 · Bank of E...	1,154.55
			Gilliam County Tr...	4011 · Taxes-Prior	-79.95
			Cash Sales	4211-3 · RV Park...	-35.00
			Cash Sales	4211-3 · RV Park...	-25.00
			Cash Sales	4211-1 · RV Park...	-525.00
			Cash Sales	4211-4 · RV Park...	-10.00
			Cash Sales	4211-3 · RV Park...	-35.00
			Cash Sales	4211-4 · RV Park...	-10.00
			Cash Sales	4211-3 · RV Park...	-35.00
			Cash Sales	4211-4 · RV Park...	-10.00
			Cash Sales	4211-3 · RV Park...	-70.00
			Cash Sales	4211-3 · RV Park...	-70.00
			Cash Sales	4211-4 · RV Park...	-10.00
			Cash Sales	4211-4 · RV Park...	-50.00
			Cash Sales	4213-2 · Gasoline...	-39.60
Payment	14231	09/14/2020	The City of Arling...	1499 · Undeposit...	-30.00
Payment	2098...	09/14/2020	Jerry Hanan	1499 · Undeposit...	-120.00
TOTAL					-1,154.55
Deposit		09/21/2020		1001 · Bank of E...	1,638.75
			Heartland Payme...	4211-1 · RV Park...	-1,575.00
			Heartland Payme...	6115-1 · Credit C...	20.31
			Heartland Payme...	4213-2 · Gasoline...	-85.78
			Heartland Payme...	6115-1 · Credit C...	1.72
TOTAL					-1,638.75

PORT OF ARLINGTON
Deposit Detail
September 2020

Type	Num	Date	Name	Account	Amount
Deposit		09/21/2020		1001 · Bank of E...	780.06
			Heartland Payme...	4211-1 · RV Park...	-525.00
			Heartland Payme...	6115-1 · Credit C...	5.03
			Heartland Payme...	4213-2 · Gasoline...	-264.57
			Heartland Payme...	6115-1 · Credit C...	4.48
TOTAL					-780.06
Deposit		09/22/2020		1001 · Bank of E...	215.00
			Cash Sales	4211-4 · RV Park...	-20.00
			Cash Sales	4211-3 · RV Park...	-35.00
			Cash Sales	4211-4 · RV Park...	-10.00
			Cash Sales	4211-3 · RV Park...	-70.00
			Cash Sales	4211-3 · RV Park...	-35.00
			Cash Sales	4211-4 · RV Park...	-10.00
			Cash Sales	4211-3 · RV Park...	-35.00
TOTAL					-215.00
Deposit		09/29/2020		1001 · Bank of E...	50.65
			Heartland Payme...	4213-2 · Gasoline...	-51.52
			Heartland Payme...	6115-1 · Credit C...	0.87
TOTAL					-50.65
Deposit		09/29/2020		1001 · Bank of E...	231.12
			Heartland Payme...	4213-2 · Gasoline...	-235.08
			Heartland Payme...	6115-1 · Credit C...	3.96
TOTAL					-231.12
Deposit		09/30/2020		1001 · Bank of E...	8,360.00
			Cash Sales	4210 · Marina Re...	-60.00
			Cash Sales	4211-3 · RV Park...	-35.00
			Cash Sales	4211-4 · RV Park...	-30.00
			Cash Sales	4211-3 · RV Park...	-35.00
			Cash Sales	4211-3 · RV Park...	-35.00
			Cash Sales	4211-3 · RV Park...	-35.00
			Cash Sales	4211-3 · RV Park...	-35.00
			Cash Sales	4211-4 · RV Park...	-30.00
			Cash Sales	4211-3 · RV Park...	-35.00

8:38 AM

10/02/20

PORT OF ARLINGTON

Deposit Detail

September 2020

Type	Num	Date	Name	Account	Amount
			Cash Sales	4211-3 · RV Park...	-35.00
			Cash Sales	4210 · Marina Re...	-60.00
			Cash Sales	4211-4 · RV Park...	-10.00
			Cash Sales	4211-4 · RV Park...	-10.00
			Cash Sales	4211-3 · RV Park...	-70.00
			Cash Sales	4210 · Marina Re...	-270.00
			Cash Sales	4211-4 · RV Park...	-10.00
			Insitu Inc.	5031 · Building L...	-7,600.00
TOTAL					-8,360.00
Paycheck	DD1...	09/30/2020	Margheim, Kelly L	1001 · Bank of E...	0.00
				6560 · Payroll Ex...	3,303.68
				6560 · Payroll Ex...	193.55
				6560 · Payroll Ex...	206.48
				6560 · Payroll Ex...	619.44
				6560 · Payroll Ex...	412.96
				6560 · Payroll Ex...	2,292.07
				2100 · Payroll Lia...	-2,292.07
				6560 · Payroll Ex...	116.46
				2100 · Payroll Lia...	-116.46
				6560 · Payroll Ex...	568.33
				2100 · Payroll Lia...	-568.33
				6560 · Payroll Ex...	3.38
				2100 · Payroll Lia...	-3.38
				2100 · Payroll Lia...	-4.74
				2100 · Payroll Lia...	-330.00
				6560 · Payroll Ex...	293.63
				2100 · Payroll Lia...	-293.63
				2100 · Payroll Lia...	-293.63
				6560 · Payroll Ex...	68.67
				2100 · Payroll Lia...	-68.67
				2100 · Payroll Lia...	-68.67
				2100 · Payroll Lia...	-275.00
				2111 · Direct Dep...	-2,446.65
				2111 · Direct Dep...	-1,317.42
TOTAL					0.00

8:38 AM

10/02/20

PORT OF ARLINGTON
Deposit Detail
September 2020

Type	Num	Date	Name	Account	Amount
Paycheck	DD1...	09/30/2020	Mitchell, Peter D	1001 · Bank of E...	0.00
				6560 · Payroll Ex...	6,600.53
				6560 · Payroll Ex...	1,100.09
				6560 · Payroll Ex...	924.07
				2100 · Payroll Lia...	-924.07
				6560 · Payroll Ex...	2,292.07
				2100 · Payroll Lia...	-2,292.07
				6560 · Payroll Ex...	116.46
				2100 · Payroll Lia...	-116.46
				6560 · Payroll Ex...	3.46
				2100 · Payroll Lia...	-3.46
				2100 · Payroll Lia...	-7.70
				2100 · Payroll Lia...	-643.00
				6560 · Payroll Ex...	477.43
				2100 · Payroll Lia...	-477.43
				2100 · Payroll Lia...	-477.43
				6560 · Payroll Ex...	111.66
				2100 · Payroll Lia...	-111.66
				2100 · Payroll Lia...	-111.66
				2100 · Payroll Lia...	-495.00
				2111 · Direct Dep...	-5,965.83
TOTAL					0.00

8:39 AM

10/02/20

**PORT OF ARLINGTON
Check Detail
September 2020**

Type	Num	Date	Name	Item	Account	Paid Amount	Original Amount
Liability Check		09/29/2020	QuickBooks Pay...		1001 · Bank of E...		-9,729.90
			QuickBooks Payr...		2111 · Direct Dep...	-9,729.90	9,729.90
TOTAL						-9,729.90	9,729.90
Check		09/29/2020	QuickBooks Pay...		1001 · Bank of E...		-1.75
					6560 · Payroll Ex...	-1.75	1.75
TOTAL						-1.75	1.75
Check	DD	09/30/2020	Peter Mitchell		1001 · Bank of E...		-271.07
					8421 · Travel/Foo...	-230.00	230.00
					8427 · Telephone...	-41.07	41.07
TOTAL						-271.07	271.07
Check	EFT	09/14/2020	Pacific Power		1001 · Bank of E...		-1,083.42
					6100 · Materials ...	-88.50	88.50
					6323 · Electricity ...	-744.59	744.59
					6721 · Marina Ele...	-49.20	49.20
					6721 · Marina Ele...	-43.33	43.33
					6624 · Park Elect...	-88.49	88.49
					8425 · Utilities	-69.31	69.31
TOTAL						-1,083.42	1,083.42
Liability Check	EFT	09/28/2020	Oregon Departm...		1001 · Bank of E...		-860.00
					2100 · Payroll Lia...	-860.00	860.00
TOTAL						-860.00	860.00

\$37,553.35

PORT OF ARLINGTON
Check Detail
 September 2020

Type	Num	Date	Name	Item	Account	Paid Amount	Original Amount
Liability Check	EFT	09/28/2020	United States Tr...		1001 · Bank of E...		-3,155.12
					2100 · Payroll Lia...	-1,021.00	1,021.00
					2100 · Payroll Lia...	-864.81	864.81
					2100 · Payroll Lia...	-864.81	864.81
					2100 · Payroll Lia...	-202.25	202.25
					2100 · Payroll Lia...	-202.25	202.25
TOTAL						-3,155.12	3,155.12
Liability Check	EFT	09/30/2020	Oregon Departm...		1001 · Bank of E...		-34.97
					2100 · Payroll Lia...	-34.97	34.97
TOTAL						-34.97	34.97
Check	EFT	09/30/2020	Oregon Departm...		1001 · Bank of E...		-43.36
					6011 · Payroll Ta...	-43.36	43.36
TOTAL						-43.36	43.36
Paycheck	DD1...	09/30/2020	Margheim, Kelly L		1001 · Bank of E...		0.00
					6560 · Payroll Ex...	-3,303.68	3,303.68
					6560 · Payroll Ex...	-193.55	193.55
					6560 · Payroll Ex...	-206.48	206.48
					6560 · Payroll Ex...	-619.44	619.44
					6560 · Payroll Ex...	-412.96	412.96
					6560 · Payroll Ex...	-2,292.07	2,292.07
					2100 · Payroll Lia...	2,292.07	-2,292.07
					6560 · Payroll Ex...	-116.46	116.46
					2100 · Payroll Lia...	116.46	-116.46
					6560 · Payroll Ex...	-568.33	568.33
					2100 · Payroll Lia...	568.33	-568.33
					6560 · Payroll Ex...	-3.38	3.38
					2100 · Payroll Lia...	3.38	-3.38
					2100 · Payroll Lia...	4.74	-4.74
					2100 · Payroll Lia...	330.00	-330.00
					6560 · Payroll Ex...	-293.63	293.63
					2100 · Payroll Lia...	293.63	-293.63
					2100 · Payroll Lia...	293.63	-293.63
					6560 · Payroll Ex...	-68.67	68.67
					2100 · Payroll Lia...	68.67	-68.67
					2100 · Payroll Lia...	68.67	-68.67
					2100 · Payroll Lia...	275.00	-275.00

PORT OF ARLINGTON
Check Detail
September 2020

Type	Num	Date	Name	Item	Account	Paid Amount	Original Amount
					2111 · Direct Dep...	2,446.65	-2,446.65
					2111 · Direct Dep...	1,317.42	-1,317.42
TOTAL						0.00	0.00
Paycheck	DD1...	09/30/2020	Mitchell, Peter D		1001 · Bank of E...		0.00
					6560 · Payroll Ex...	-6,600.53	6,600.53
					6560 · Payroll Ex...	-1,100.09	1,100.09
					6560 · Payroll Ex...	-924.07	924.07
					2100 · Payroll Lia...	924.07	-924.07
					6560 · Payroll Ex...	-2,292.07	2,292.07
					2100 · Payroll Lia...	2,292.07	-2,292.07
					6560 · Payroll Ex...	-116.46	116.46
					2100 · Payroll Lia...	116.46	-116.46
					6560 · Payroll Ex...	-3.46	3.46
					2100 · Payroll Lia...	3.46	-3.46
					2100 · Payroll Lia...	7.70	-7.70
					2100 · Payroll Lia...	643.00	-643.00
					6560 · Payroll Ex...	-477.43	477.43
					2100 · Payroll Lia...	477.43	-477.43
					2100 · Payroll Lia...	477.43	-477.43
					6560 · Payroll Ex...	-111.66	111.66
					2100 · Payroll Lia...	111.66	-111.66
					2100 · Payroll Lia...	111.66	-111.66
					2100 · Payroll Lia...	495.00	-495.00
					2111 · Direct Dep...	5,965.83	-5,965.83
TOTAL						0.00	0.00
Check	9428	09/14/2020	Arlington Hardw...		1001 · Bank of E...		-320.79
					6724 · Marina Ma...	-117.85	117.85
					8435 · Building C...	-14.99	14.99
					6627 · Park Maint...	-3.47	3.47
					6326 · Maintenanc...	-184.48	184.48
TOTAL						-320.79	320.79
Check	9429	09/14/2020	Gilliam County T...		1001 · Bank of E...		-1,012.00
					8441 · Loan - Pri...	-797.64	797.64
					8442 · Loan - Inte...	-214.36	214.36
TOTAL						-1,012.00	1,012.00

**PORT OF ARLINGTON
Check Detail
September 2020**

Type	Num	Date	Name	Item	Account	Paid Amount	Original Amount
Check	9430	09/14/2020	Arlington T.V. C...		1001 · Bank of E...		-240.00
				8427 · Telephone...		-80.00	80.00
				6114 · Insurance,...		-80.00	80.00
				6324 · WIFI - RV		-80.00	80.00
TOTAL						-240.00	240.00
Check	9431	09/14/2020	Meadow Outdoo...		1001 · Bank of E...		-1,399.00
				8426 · Advertisin...		-1,399.00	1,399.00
TOTAL						-1,399.00	1,399.00
Check	9432	09/14/2020	Devin Oil Co. Inc		1001 · Bank of E...		-2,281.72
				6727-1 · Marina ...		-2,281.72	2,281.72
TOTAL						-2,281.72	2,281.72
Check	9433	09/14/2020	Pacific Power		1001 · Bank of E...		-637.26
				8425 · Utilities		-637.26	637.26
TOTAL						-637.26	637.26
Check	9434	09/14/2020	Solutions, CPAs...		1001 · Bank of E...		-3,000.00
				6116 · Audit, Bud...		-3,000.00	3,000.00
TOTAL						-3,000.00	3,000.00
Check	9435	09/14/2020	Bank of Eastern ...		1001 · Bank of E...		-975.23
				6115 · Dues, Sub...		-12.00	12.00
				6119 · Commissi...		-134.40	134.40
				6129 · Postage		-5.40	5.40
				6623 · Comfort St...		-179.98	179.98
				6112 · Office Sup...		-308.45	308.45
				6724 · Marina Ma...		-329.00	329.00
				8426-1 · Dues & ...		-6.00	6.00
TOTAL						-975.23	975.23

9:39 AM

10/02/20

PORT OF ARLINGTON
Check Detail
September 2020

Type	Num	Date	Name	Item	Account	Paid Amount	Original Amount
Check	9436	09/14/2020	Bank of Eastern ...		1001 · Bank of E...		-24.95
					8421 · Travel/Foo...	-24.95	24.95
TOTAL						-24.95	24.95
Check	9437	09/14/2020	VanKoten & Cle...		1001 · Bank of E...		-792.50
					6113 · Legal Fees	-425.00	425.00
					8423 · Legal Fees	-367.50	367.50
TOTAL						-792.50	792.50
Check	9438	09/14/2020	Loop Net		1001 · Bank of E...		-69.00
					8426 · Advertisin...	-69.00	69.00
TOTAL						-69.00	69.00
Check	9439	09/14/2020	Arlington Market		1001 · Bank of E...		-130.72
					6127 · Commissi...	-130.72	130.72
TOTAL						-130.72	130.72
Check	9440	09/15/2020	City of Arlington		1001 · Bank of E...		-890.94
					6111 · Utilities	-44.00	44.00
					8425 · Utilities	-149.50	149.50
					6622 · Sanitation	-33.00	33.00
					6321 · Water Fee...	-281.60	281.60
					6329 · Sewer	-330.84	330.84
					6322 · Sanitation ...	-52.00	52.00
TOTAL						-890.94	890.94

PORT OF ARLINGTON
Check Detail
September 2020

Type	Num	Date	Name	Item	Account	Paid Amount	Original Amount
Paycheck	9441	09/30/2020	Metzker, James L		1001 - Bank of E...		-1,256.86
					6560 - Payroll Ex...	-1,512.04	1,512.04
					6560 - Payroll Ex...	-2.57	2.57
					2100 - Payroll Lia...	2.57	-2.57
					2100 - Payroll Lia...	1.51	-1.51
					2100 - Payroll Lia...	48.00	-48.00
					6560 - Payroll Ex...	-93.75	93.75
					2100 - Payroll Lia...	93.75	-93.75
					2100 - Payroll Lia...	93.75	-93.75
					6560 - Payroll Ex...	-21.92	21.92
					2100 - Payroll Lia...	21.92	-21.92
					2100 - Payroll Lia...	21.92	-21.92
					2100 - Payroll Lia...	90.00	-90.00
TOTAL						-1,256.86	1,256.86
Liability Check	9442	09/28/2020	Fidelity Brokera...		1001 - Bank of E...		-1,492.40
					2100 - Payroll Lia...	-1,492.40	1,492.40
TOTAL						-1,492.40	1,492.40
Check	9443	09/28/2020	The City of Arlin...		1001 - Bank of E...		-1,800.00
					8430 - City of Arli...	-1,800.00	1,800.00
TOTAL						-1,800.00	1,800.00
Check	9444	09/28/2020	SDiS		1001 - Bank of E...		-4,817.06
					2100 - Payroll Lia...	-2,292.07	2,292.07
					2100 - Payroll Lia...	-116.46	116.46
					2100 - Payroll Lia...	-2,292.07	2,292.07
					2100 - Payroll Lia...	-116.46	116.46
TOTAL						-4,817.06	4,817.06
Check	9445	09/28/2020	Travel Informati...		1001 - Bank of E...		-668.00
					8426 - Advertisin...	-668.00	668.00
TOTAL						-668.00	668.00

8:39 AM

10/02/20

PORT OF ARLINGTON

Check Detail

September 2020

Type	Num	Date	Name	Item	Account	Paid Amount	Original Amount
Check	9446	09/28/2020	Gorge Networks		1001 - Bank of E...		-285.33
				8427 - Telephone...		-71.13	71.13
				6324 - WIFI - RV		-73.11	73.11
				6117 - Telephone...		-71.13	71.13
				6117 - Telephone...		-69.96	69.96
TOTAL						-285.33	285.33
<hr/>							
Check	9447	09/28/2020	Christopher Jac...		1001 - Bank of E...		-280.00
					4210 - Marina Re...	-280.00	280.00
TOTAL						-280.00	280.00

2020 Port of Arlington fuel Sales								
Date	\$ / gallon	Gasoline			\$ / gallon	Diesel		
		Number	Gallons	\$ Sales		Number	Gallons	\$ Sales
January-20	\$ 3.99	7	94	\$ 373.93	\$ 2.69	0	0	\$ -
February-20	\$ 3.99	6	31	\$ 122.30	\$ 2.69	1	6	\$ 16.97
March-20	\$ 3.99	27	258	\$ 1,049.13	\$ 2.69	0	0	\$ -
April-20	\$ 3.99	32	259	\$ 1,032.66	\$ 2.69	0	0	\$ -
May-20	\$ 3.99	33	234	\$ 836.72	\$ 2.69	1	10	\$ 27.10
June-20	\$ 3.49	49	399	\$ 1,293.61	\$ 2.69	0	0	\$ -
July-20	\$ 3.49	50	388	\$ 1,144.76	\$ 2.69	2	83	\$ 223.99
August-20	\$ 3.49	67	805	\$ 2,622.41	\$ 2.69	3	89	\$ 240.06
September-20	\$ 3.49	52	495	\$ 1,631.00	\$ 2.69	0	0	\$ -
October-20				\$ 2.69		0		
November-20				\$ 2.69		0		
December-20				\$ 2.69		0		
YTD Totals		323	2,963	\$ 10,106.52		7	188	\$ 508.12

2019 Port of Arlington fuel Sales								
Date	\$ / gallon	Gasoline			\$ / gallon	Diesel		
		Number	Gallons	\$ Sales		Number	Gallons	\$ Sales
January-19	\$ 3.90	11	109	\$ 413.84	\$ 2.69	0	0	\$ -
February-19	\$ 3.90	12	154	\$ 583.47	\$ 2.69	0	0	\$ -
March-19	\$ 3.90	13	91	\$ 337.40	\$ 2.69	0	0	\$ -
April-19	\$ 3.90	33	268	\$ 1,004.21	\$ 2.69	0	0	\$ -
May-19	\$ 4.59	41	291	\$ 1,256.28	\$ 2.69	0	0	\$ -
June-19	\$ 4.59	40	331	\$ 1,528.44	\$ 2.69	0	0	\$ -
July-19	\$ 3.99	46	443	\$ 1,872.21	\$ 2.69	1	13	\$ 35.49
August-19	\$ 3.99	57	618	\$ 2,442.36	\$ 2.69	3	108	\$ 290.91
September-19	\$ 3.99	45	465	\$ 1,757.99	\$ 2.69	5	46	\$ 123.11
October-19	\$ 3.99	38	422	\$ 1,576.03	\$ 2.69	4	184	\$ 472.91
November-19	\$ 3.99	24	229	\$ 914.15	\$ 2.69	0	0	\$ -
December-19	\$ 3.99	16	212	\$ 808.98	\$ 2.69	0	0	\$ -
YTD Totals		376	3,632	\$ 14,495.36		13	352	\$ 922.42

2018 Port of Arlington fuel Sales								
Date	\$ / gallon	Gasoline			\$ / gallon	Diesel		
		Number	Gallons	\$ Sales		Number	Gallons	\$ Sales
January-18	\$ 3.46	8	101	\$ 348.57	\$ 2.69	0	0	\$ -
February-18	\$ 3.46	8	75	\$ 258.03	\$ 2.69	0	0	\$ -
March-18	\$ 3.89	16	171	\$ 642.94	\$ 2.69	0	0	
April-18	\$ 3.89	28	251	\$ 890.77	\$ 2.69	0	0	\$ -
May-18	\$ 3.89	31	295	\$ 1,148.39	\$ 2.69	1	109	\$ 294.09
June-18	\$ 3.99	31	491	\$ 1,952.05	\$ 2.69	0	0	\$ -
July-18	\$ 3.99	45	431	\$ 1,729.80	\$ 2.69	2	325	\$ 876.54
August-18	\$ 3.99	42	465	\$ 1,860.38	\$ 2.69	3	155	\$ 417.42
September-18	\$ 4.09	30	296	\$ 1,150.99	\$ 2.69	3	94	\$ 254.24
October-18	\$ 4.09	53	573	\$ 2,352.91	\$ 2.69	4	905	\$ 2,441.98
November-18	\$ 4.09	13	126	\$ 516.79	\$ 2.69	0	0	
December-18	\$ 3.80	7	86	\$ 336.71	\$ 2.69	0	0	
YTD Totals		312	3,360	\$ 13,188.33		13	1588	\$ 4,284.27

PORT OF ARLINGTON
Profit & Loss Prev Year Comparison
July 1 through October 2, 2020

	Jul 20	Jul 19	\$ Change	% Change	Aug 20	Aug 19	\$ Change	% Change	Sep 20	Sep 19	\$ Change
Ordinary Income/Expense											
Income											
GENERAL FUND RESOURCES											
4210 - Marina Revenue	820.00	1,026.00	-206.00	-20.08%	90.00	1,562.00	-1,472.00	-94.24%	670.00	370.00	300.00
4211 - RV Park Revenues											
4211-1 - RV Park Monthly R	3,675.00	2,630.00	1,045.00	39.73%	2,100.00	1,500.00	600.00	40.0%	3,675.00	2,457.00	1,218.00
4211-2 - RV Park Weekly R	0.00	250.00	-250.00	-100.0%	380.00	125.00	255.00	204.0%	0.00	0.00	0.00
4211-3 - RV Park Daily Rent	1,290.00	1,225.00	65.00	5.31%	1,595.00	1,179.00	416.00	35.28%	1,910.00	1,350.00	560.00
4211-4 - RV Park Dry Camp	582.50	367.00	215.50	58.72%	229.00	249.00	-20.00	-8.03%	660.00	264.00	396.00
4211-5 - Monthly TV	0.00	0.00	0.00	0.0%	0.00	0.00	0.00	0.0%	0.00	20.00	-20.00
Total 4211 - RV Park Revenue	5,547.50	4,472.00	1,075.50	24.05%	4,304.00	3,053.00	1,251.00	40.98%	6,245.00	4,091.00	2,154.00
4213 - Marina Fuel Revenue											
4213-2 - Gasoline Sales	1,372.26	1,872.21	-499.95	-26.7%	2,622.41	2,443.36	179.05	7.33%	1,631.37	1,895.46	-264.09
4213-1 - Diesel Sales	223.99	35.49	188.50	531.14%	240.06	290.91	-50.85	-17.48%	0.00	123.11	-123.11
4213 - Marina Fuel Revenue	0.00	0.00	0.00	0.0%	0.00	13.54	-13.54	-100.0%	0.00	0.00	0.00
Total 4213 - Marina Fuel Revenue	1,596.25	1,907.70	-311.45	-16.33%	2,862.47	2,747.81	114.66	4.17%	1,631.37	2,018.57	-387.20
4214 - Marina Power and Water	60.00	110.00	-50.00	-45.46%	70.00	110.00	-40.00	-36.36%	0.00	140.00	-140.00
4340 - Willow Creek Rock Sale	19,049.28	47,311.51	-28,262.23	-59.74%	0.00	2,574.77	-2,574.77	-100.0%	0.00	862.04	-862.04