

Mouse Anti-Melanoma PNL2 [PNL2]: MC0847, MC0847RTU7

Intended Use: For Research Use Only

Description: Metastatic melanoma is often confused with a variety of poorly differentiated carcinomas, sarcomas, and large cell lymphomas. This reacts with fetal and neonatal melanocytes but not with normal adult melanocytes, junctional nevus cells but not with intradermal nevi, hence showing specificity for detection of melanocytic tumors. The panel of tumor markers, most commonly used in conjunction with PNL2, for evaluation of melanoma includes S-100 protein LCA, CEA, and EMA, as well as vimentin, an intermediate filament found in both melanomas and sarcomas.

Specifications

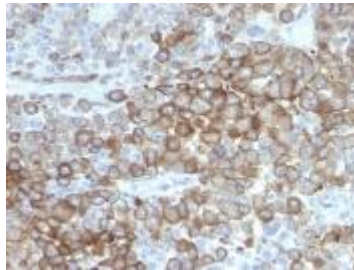
Clone: PNL2
Source: Mouse
Isotype: IgG1k
Reactivity: Human, mouse, dog
Localization: Cytoplasm
Formulation: Antibody in PBS pH7.4 containing 0.2% BSA and $\leq 0.09\%$ sodium azide (NaN₃)
Storage: Store at 2°- 8°C.
Applications: IHC, ICC/IF
Package:

Description	Catalog No.	Size
Melanoma Concentrated	MC0847	1 ml
Melanoma Prediluted	MC0847RTU7	7 ml

IHC Procedure*

Positive Control Tissue: Melanoma
Concentrated Dilution: 50-200
Pretreatment: Citrate pH6.0 or EDTA pH8.0, 15 minutes using Pressure Cooker, or 30-60 minutes using water bath at 95°-99°C
Incubation Time and Temp: 30-60 minutes @ RT
Detection: Refer to the detection system manual

* Result should be confirmed by an established diagnostic procedure.



FFPE human melanoma stained with anti-PNL2 using DAB

References:

1. Hepatic epithelioid angiomylipoma is a rare and potentially severe but treatable tumor: A report of three cases and review of the literature. Liu W, et al. *Oncol Lett* 11:3669-3675, 2016.
2. Surgical monotherapy may be a suitable therapeutic strategy for advanced collecting (Bellini) duct carcinoma: A case report and literature review. Zhu L et al. *Exp Ther Med* 12:1181-1184, 2016.
3. STX13 regulates cargo delivery from recycling endosomes during melanosome biogenesis. Jani RA, et al. *J Cell Sci* 128:3263-76, 2015.
4. Punctate LC3B expression is a common feature of solid tumors and associated with proliferation, metastasis, and poor outcome. Lazova R, et al. *Clin Cancer Res* 18:370-9, 2012.
5. The tetraspanin CD63 regulates ESCRT-independent and -dependent endosomal sorting during melanogenesis. van Niel G, et al. *Dev Cell* 21:708-21, 2011.

Doc. 100-MC0847
Rev. A