

ARCHERY

FOR
1941

Bows and Arrows
of Excellence

**BEN PEARSON**
INCORPORATED
PINE BLUFF, ARKANSAS

CATALOG NO. 16

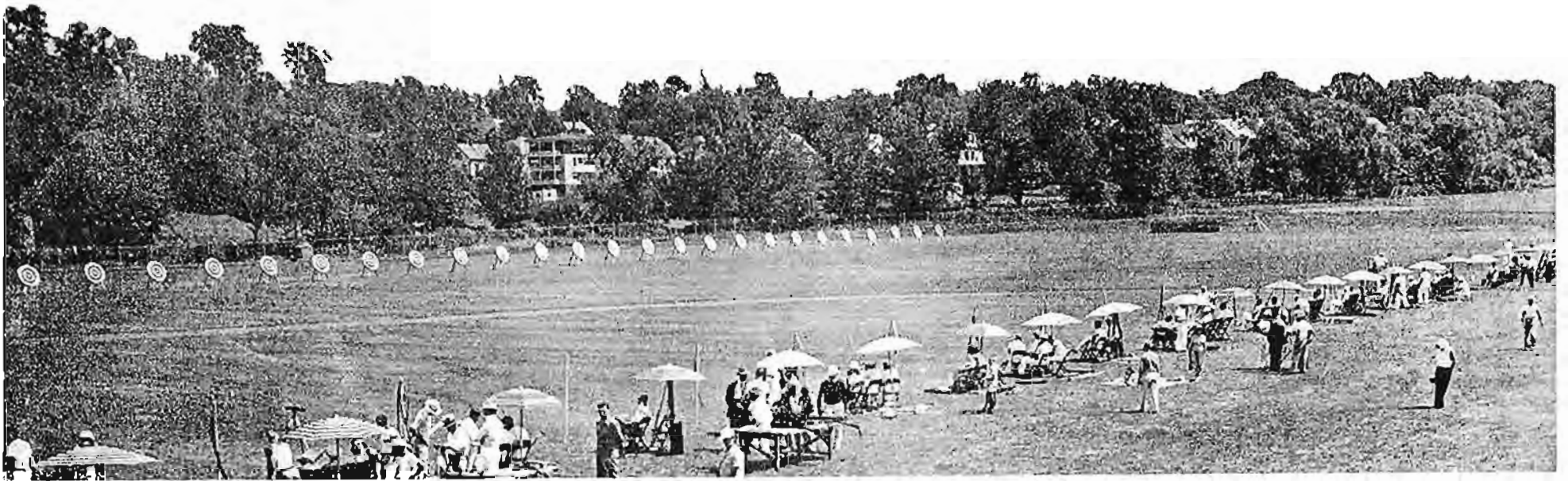
F O R E W O R D

"So long as the new moon returns in heaven, a bent, beautiful bow, so long will the fascination of archery keep hold of the hearts of men."—Maurice Thompson.

This fascination of a noble sport; this inborn love of the bow, inherited from our forefathers, plus an ever present desire to produce nothing but the best, prompts those of us who are charged with the direction of the Ben Pearson organization, as well as our many employees, TO MAKE THE VERY BEST ARCHERY EQUIPMENT THAT CAN BE PRODUCED.

Thus it is with pardonable pride that we present this, our 1941 Catalogue of Bows and Arrows of Excellence.

Ben Pearson



TERMS

TERMS: CASH WITH ORDER OR C. O. D.

IN ORDERING, please note the following:

Be sure to give catalog number and name of items ordered, and state lengths, weights, sizes, etc.

Be sure your name and address is plainly lettered.

Be sure to include sufficient postage with orders not prepaid. Otherwise order will be delayed as it will be necessary to notify you

of deficiency. Excess postage will be refunded.

Orders amounting to less than \$5.00 are F. O. B. Pine Bluff, Arkansas. Orders for more than \$5.00, at catalog prices, are shipped postpaid, except in case of hickory staves, lemonwood staves, and straw targets. These items are F. O. B. Pine Bluff, Ark., regardless of the amount of the order.

FOREIGN SHIPMENTS: No Postal C. O. D. exists between the United States and foreign countries, therefore all orders coming from outside the United States should be accompanied with remittance in full in American exchange. All shipments made outside the United States are F. O. B. Pine Bluff, Arkansas, regardless of the amount of the order.

DEALER SHIPMENTS ARE F. O. B. PINE BLUFF, ARKANSAS

ALL PRICES
IN THIS
CATALOG
ARE SUBJECT
TO CHANGE
WITHOUT
NOTICE



BEN PEARSON, INC., FACTORY LOCATED AT PINE BLUFF, ARKANSAS

BEN PEARSON TOURNAMENT BOWS



YEW AND OSAGE ORANGE TARGET BOWS

Custom made from matched, thoroughly seasoned billets. Neat leather grip. Inlaid arrow plate. Equipped with Lay-Latex bowstring. Flexible varnish finish. In ordering state length of arrow to be used and drawing weight desired. Shipped in cloth case.

901-2 Osage Orange Target Bow. Lengths 5 to 6 feet. Drawing weights to 55 lbs. \$25.00

901 Same as above from extra select billets. \$30.00

Y901-2 Yew Target Bow. Lengths 5 to 6 feet. Drawing weights to 55 lbs. \$25.00

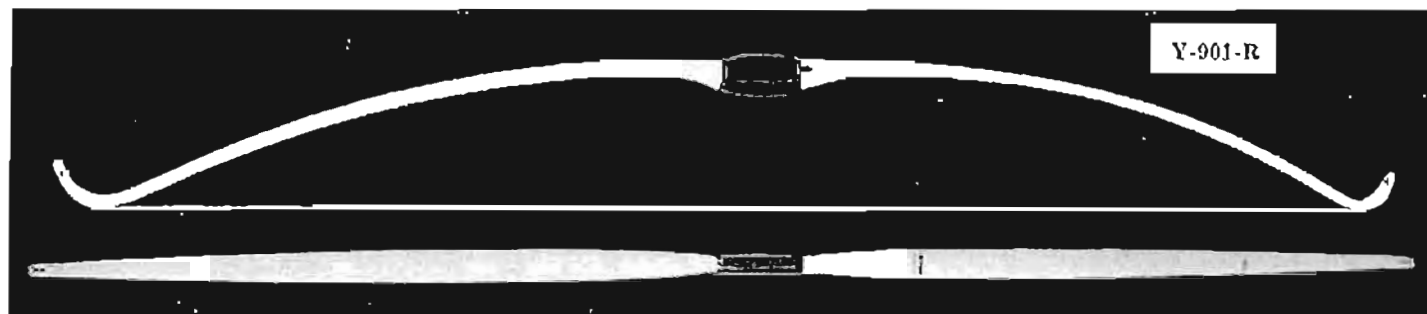
Y901 Same as above, from extra select billets. \$30.00

BACKING

Rauhide backing on above bows, \$3.00 extra

Silk backing on above bows, \$6.00 extra.

The above Bows, with recurved ends as illustrated below, \$5.00 extra.



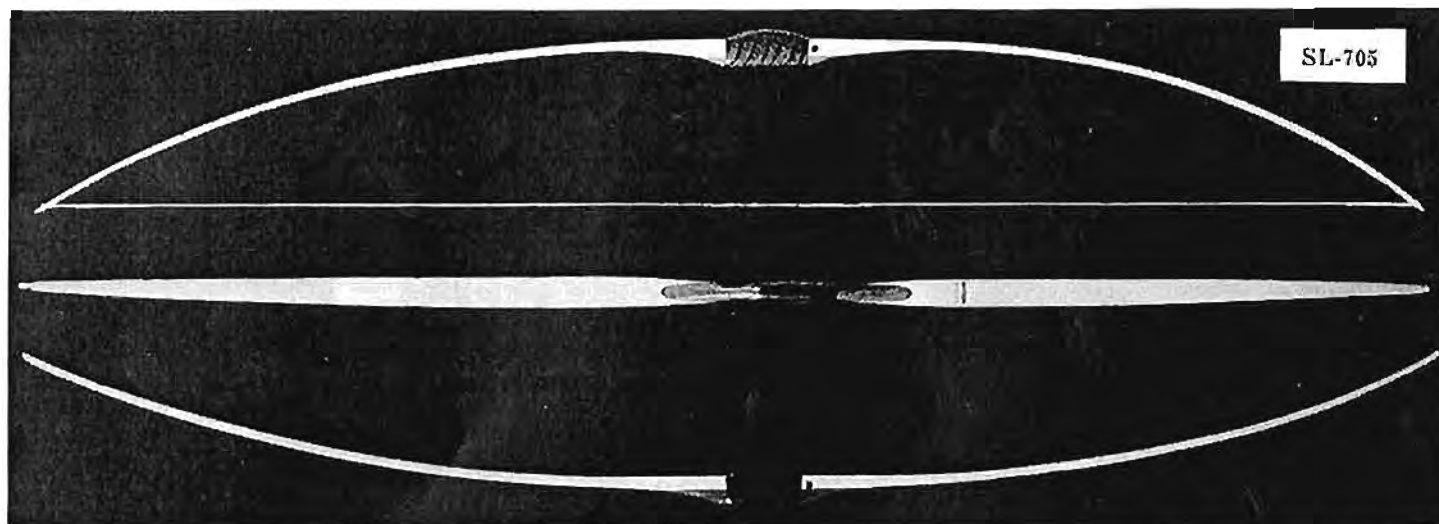
Osage Orange (Bois d' Arc, or Mock Orange) grows as a tree or shrub over most of the Middle West and in some of the northeastern states. It is an extremely hard and tough wood with brownish-white sap-wood and heart-wood that varies in different pieces from a bright yellow to a deep golden brown. It makes a beautiful, strong bow which follows the string very little and is probably the least affected by weather changes of any wood. Osage bows must be made almost entirely by hand as the wood grows wavy and twisted.

Yew wood, for centuries, has been the first choice of archers for their best bows. The gnarled, twisted, yew tree, however, seldom yields a piece from which a bow may be made. Fortunately indeed is the searcher to find a tree with a section free from knots. Its reddish colored heart-wood forms a beautiful contrast with the white sap wood. It is not for appearance, however, that yew bows are made with a thin line of sap-wood on the back. The perfect bow wood—its tough, fibrous sap wood protects the bow and recovers after stretching.



Outstanding in the field of archery today is the fact that the women of America have taken to it, not only as a delightful sport, but as one for keeping their figures trim. At most of the tournaments held throughout the country there are nearly as many women competing as men. The rounds women shoot are shot at shorter distances than men's rounds, and their tackle is somewhat lighter. Women's target bows average about twenty-five pounds drawing weight compared to men's average of about forty pounds. Archery is one of the few sports that women of all ages can engage in.

SENSATIONAL LAMINATED TARGET BOWS



Using the age-old principle of the Turkish composite bow, BEN PEARSON has created these sensational shooting laminated bows. Special gluing processes are necessary in making these bows whose graceful reflex add so much to their cast and beauty. These are fast, durable bows that will not follow the string. Rather, the limbs actually bend backwards when the bow is unbraced (see illustration). The moderate prices are made possible only through large volume purchases of the best bow materials and modern precision production methods. These bows are perfectly tillered and have been drawn at least 250 times in the process of manufacture.

LAMINATED LEMONWOOD TARGET BOW

A fast, durable, and beautiful bow. Made of two laminations of lemonwood, with hardwood handle riser, inlaid arrow plate, leather grip, Lay-Latex string. Varnish finish. Silk backing for added strength. The backing is painted white with a flexible coating that reflects heat from the back of the bow and helps prevent it from losing cast in the sun. Maximum 5'6". (Shorter lengths on special order.) Weights to 50 lbs. Specify weight in ordering.

No. SL-705 Silk-Backed Laminated Lemonwood Bow\$16.00

Laminated Lemonwood and Hickory Bow. Back lamination is of hickory for strength and the belly is made of carefully selected lemonwood. Leather grip, Lay-Latex string, varnish finish. Maximum length 5'6". Weights to 50 lbs. Specify weight in ordering.

No. HL-705 Lemonwood and Hickory Bow \$12.50

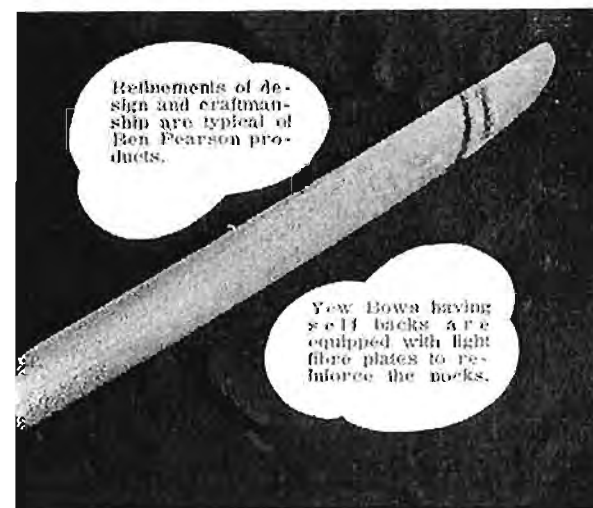
OSAGE ORANGE TARGET BOW

An extremely practical tournament bow at a moderate price. The reflex that is built into this bow in its manufacture adds to the brilliant cast of the select, thoroughly seasoned Osage Orange which is used in the lamination which forms the belly of the bow. Backed with hickory. It has a beautiful hardwood handle riser, inlaid arrow plate, nicely trimmed leather grip, Lay-Latex linen string. Finished with a high-grade flexible varnish finish. Maximum length 5'6" (shorter lengths on special order). Weights to 50 pounds. Specify weight in ordering. No. LO-905 Laminated Osage Target Bow. \$20.00

LAMINATED YEW TARGET BOW

BEN PEARSON'S manufacturing methods have enabled the archer for the first time to buy an excellent Yew Bow at a moderate price. Yew wood is laminated with tough, straight-grained white hickory. It has the graceful reflex common to the 705 line of laminated bows. A beautiful, smooth-shooting bow, light in the hand and lightning fast. Hardwood handle riser, inlaid arrow plate, nicely trimmed leather grip, Lay-Latex linen string. It has a high-grade flexible varnish finish. Maximum length 5'6" and weights to 50 lbs. Specify weight in ordering. No. LY-905 Laminated Yew Target Bow.....\$20.00

A Wisconsin archer writes: "I have been using the bow I purchased from you for the York Round. I've shot this bow all summer with a point of aim below the target at 100 yards. This is much better than I can do with any other bow of the same weight that I've ever used."



LEMONWOOD TARGET BOWS



LEMONWOOD TARGET BOWS

Narrow deep handle, hardwood handle riser, leather grip, inlaid arrow plate, hand tillered, Lay latex linen string, Durable varnish finish. Made only from select, well-seasoned stock. In ordering please state drawing weight.

No. 7059	5' 9" length, weights to 45 lbs.	\$6.50
No. 7056	5' 6" length, weights to 40 lbs.	5.50
No. 7050	5' 0" length, weights to 25 lbs.	4.50

FIBRE-BACKED LEMONWOOD BOWS

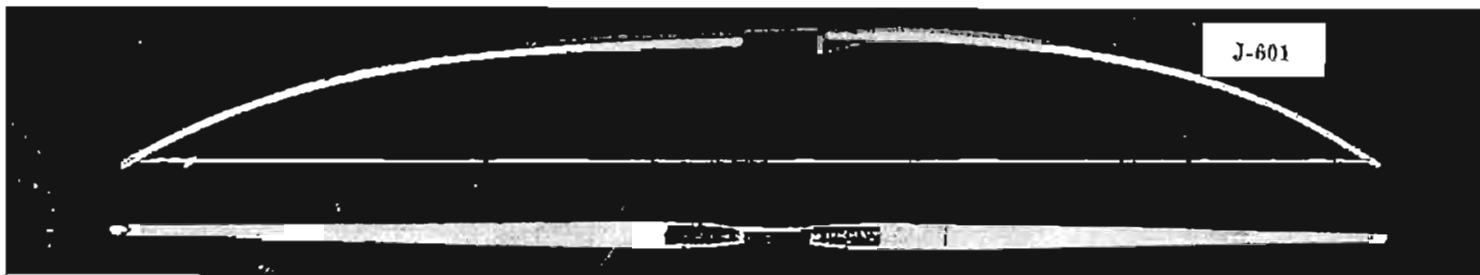
Fibre backing adds to the beauty of these bows and provides protection against breakage. Narrow deep handle, hardwood handle riser, leather grip, inlaid arrow plate, Lay-latex string, hand tillered, varnish finish.

No. F-7059	White fibre only; 5'9" lenth; wts. to 50 lbs.	\$7.50
No. F-7056	White fibre only; 5'6" lgth; wts. to 45 lbs.	6.50
No. F-7050	Red fibre only; 5 ft. lgth; wts. to 30 lbs.	5.25



The photograph above shows the handle section of a BEN PEARSON Lemonwood Bow. Note the neat handle trim and arrow plate. Only the best of top-grain leather is used in these handles. Lemonwood (degame) derives its name from its color. English bowyers used the name to distinguish it from lancewood, which was much used at that time in the making of bows.

The early Spaniards liked spars of this close-grained tropical hardwood for the masts of their boats.



SPECIAL JUVENILE LEMONWOOD TARGET BOW

This flat-type juvenile bow is full five feet in length and will handle arrows up to 25 inches. Made by the same precision methods as our regular line of lemonwood bows, it is an outstanding value. Hardwood handle riser. Hemp string.

Varnish finish. The colorful handle and flowing lines of this bow gives it words of appeal to the young archer.

No. J-601	Lemonwood Target Bow, 5' length, weights to 20 pounds	\$3.00
-----------	---	--------

POPULAR PRICED TARGET BOWS

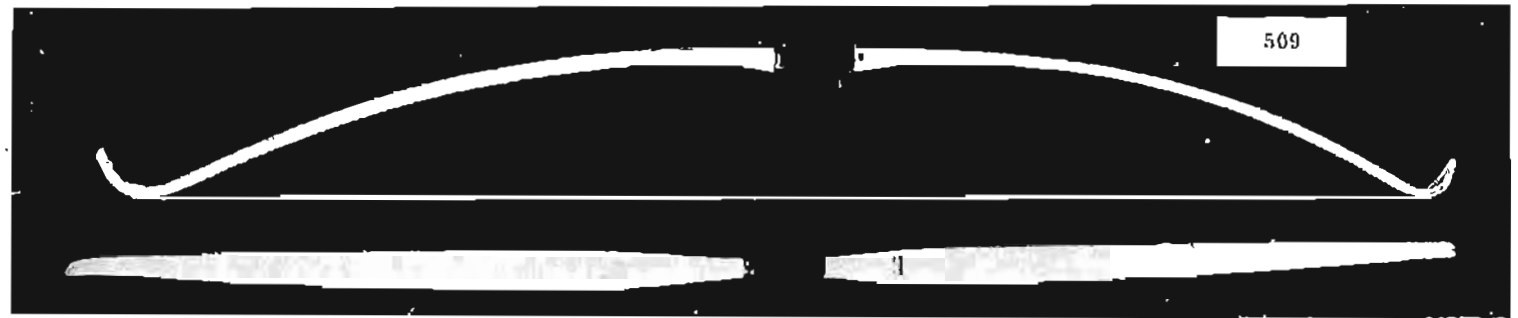


Pictured above is one of the many Indian Archery Bows which are to be found in every large city. Indian tournaments are held each year. Some of these are national in scope. One of the most successful of these is the Olympic Bowmen League Tournament, which holds 10 meet matches yearly, starting the 15th of January.

HICKORY BOW FOR JUVENILES

Made of seasoned hickory, a bow that any youngster will be proud to own. Handle riser of contrasting wood with attractive handle and arrow plate. Sturdy hump string and durable varnish finish. Length 5 ft., drawing weights to 30 pounds.

No. 500 Hickory Bow for Juveniles, as illustrated at right \$2.00



RECURVED HICKORY TARGET BOW

Made of well-seasoned, carefully selected hickory. Leather grip. Lay-latex linen string (see page 20); inlaid arrow plate. Perfectly tillered, nicely finished with varnish. This is a

splendid hard-shooting bow that will stand lots of rough treatment. Length 5'6", drawing weights to 50 lbs. No. 509 Recurved Hickory Target Bow \$7.50



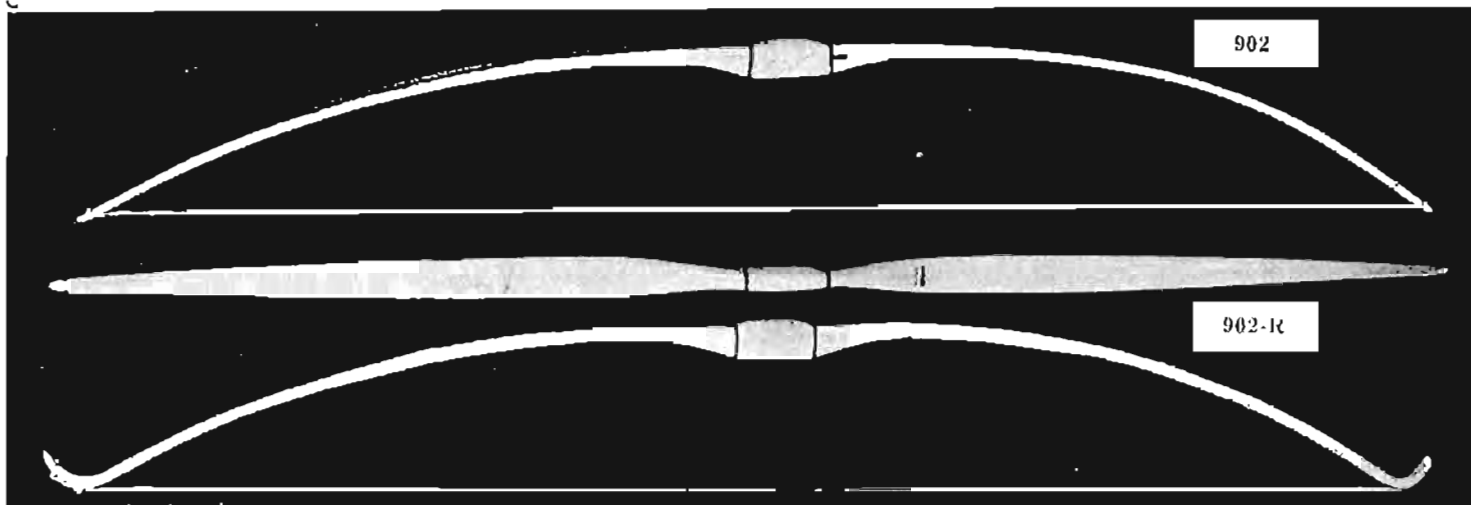
HICKORY TARGET BOW

A remarkably good shooting bow. Straight ends as illustrated. Otherwise the same as No. 509. This bow will give

years of service. Length 5'6", drawing weights to 40 pounds. No. 501 Hickory Target Bow, as illustrated \$4.00



YEW and OSAGE HUNTING BOWS



Hunting with bow and arrows is fast becoming popular in many states of the Union. Strong bows and special hunting arrows with steel broadheads are used for large game. Many states have set up special archery game areas for hunting or have declared special pre-seasonal privileges for archers.

BEN PEARSON hunting bows are made of the finest selection of materials. They are built rugged to withstand the rough usage of hunting under varying conditions. The tough leather grip, inlaid brow plate, self nocks, Lay-laytex string, and dull water-proof finish are features common to all BEN PEARSON Hunting Bows.

OSAGE ORANGE HUNTING BOWS

Made of the finest selection of Osage Orange. The perfect tillering and flat design permits a short bow if desired and one that shoots exceptionally fast. Lengths 5' 3" to 5' 8". Drawing weights to 75 pounds.

No. 902 Osage Orange Hunting Bow \$32.50
 No. 902-R Same as above except recurved ends \$37.50
 For the above bows with rawhide backing, add \$3.00.
 For the above bows with silk backing, add \$6.00.

YEW HUNTING BOWS

Made of the most carefully selected, high elevation, Yew wood. Correctly designed for maximum cast with heavy arrows and beautifully finished. Lengths 5' 3" to 5' 8". Drawing weights to 75 pounds.

No. Y-902 Yew Hunting Bow \$32.50
 No. Y-902-R Same as above, except recurved ends \$37.50
 For the above bows with rawhide backing, add \$3.00
 For the above bows with silk backing, add \$6.00.

LAMINATED HUNTING BOWS

LAMINATED OSAGE HUNTING BOW

A reasonably priced hunting bow with lots of cast. This bow is constructed in the same way and has the same features of the Laminated Target Bows illustrated on page 5. The tough hickory backing gives it the stamun to stand adverse conditions so often found while hunting. Maximum length 5' 6" and drawing weights to 75 pounds.

No. LO-702 Laminated Osage Hunting Bow \$22.50

LAMINATED LEMONWOOD BOW

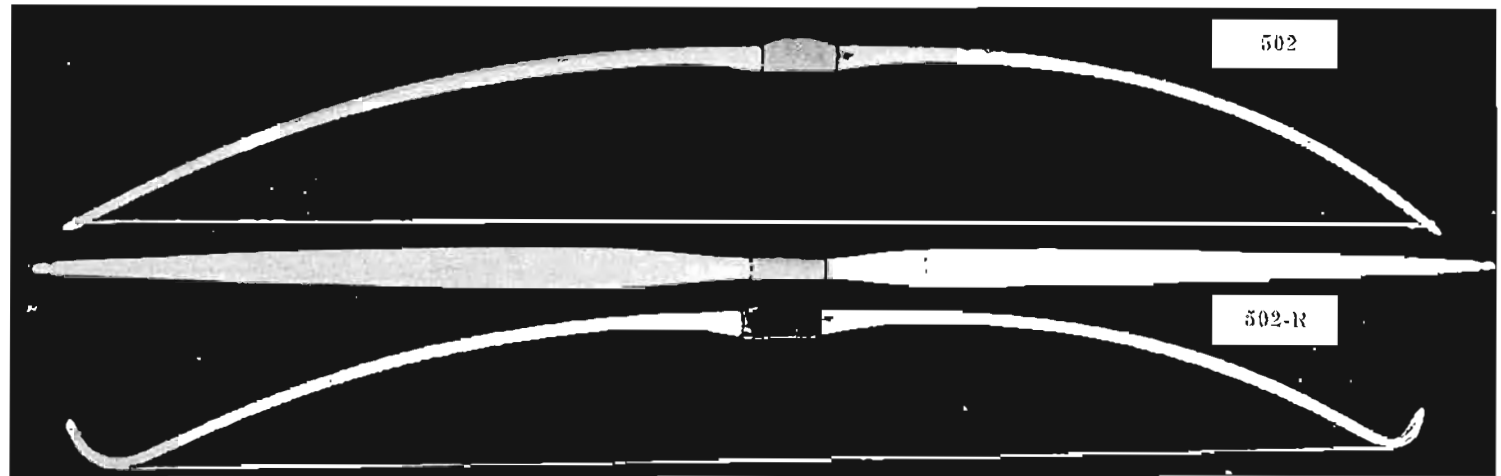
An extremely practical hunting bow. This bow is formed with a lamination of hickory on the back of a piece of carefully selected, well-seasoned, lemonwood. It has plenty of cast to throw a heavy hunting arrow and a splendid appearance. It is similar in appearance to the Laminated Bows illustrated on page 5; Maximum length 5' 6"; drawing weights to 60 lbs.

No. LL-702 Laminated Lemonwood Hunting Bow \$14.00



The archer in the above picture is Kore. T. Duryee of Seattle, Washington. Mr. Duryee is one of the "Grand Old Men" of archery; having spent a great many years of his life in archery activity. He has been Secretary of the Northwestern Archery Association for a number of years and has sponsored and conducted the Olympic Bowmen League tournament. (This is a mail shoot conducted each year. The round is ninety arrows at thirty yards and teams enter from all over the United States.) He is an ardent hunter with the bow. He is shown with a two-point buck he recently killed with a single arrow. On the same trip Mr. Duryee shot his limit of grouse (6) in one day with the bow and arrow.

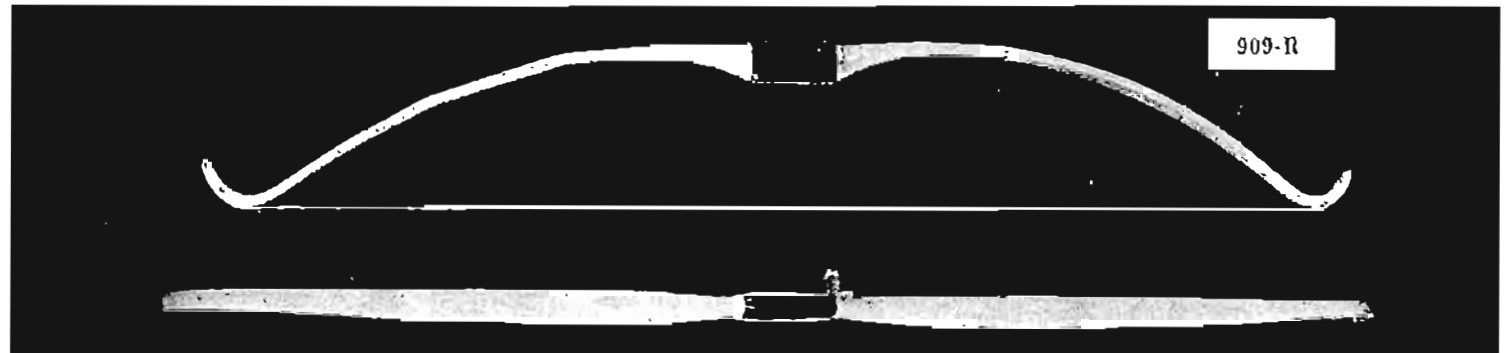
HUNTING AND FLIGHT BOWS



HICKORY HUNTING BOWS

An inexpensive, hard shooting bow with worlds of strength. While not as fast as a yew or osage, the extra wide flat construction of this bow gives it a beautiful appearance and the carefully selected hickory that is used in its manufacture gives it a toughness and stamina not often found in bows of this

price. It is nicely finished with varnish. Leather grip, inlaid leather arrow plate. Lay-Latex string. (See page 29.) Length 5' 6". Drawing weights to 65 pounds.
 No. 502 Hickory Hunting Bow \$6.00
 No. 502-R Same as No. 502, except with recurved ends \$8.00



FLIGHT BOWS

BEN PEARSON Flight Bows are correctly designed and fashioned from first quality materials.
 No. 909-R Osage Orange Flight Bow; silk backed \$35.00
 No. Y-909-R Yew Flight Bow; silk backed \$35.00
 For Sinew Backing on either of above bows, add \$5.00.

FLIGHT ARROWS

Made from extra select Port Orford Cedar. Fitted with moulded plastic nocks and special 5-32" flight points.
 No. 301—Flight Arrow \$1.00
 No. F-301 Flight Arrow. Fitted with short hardwood footing, otherwise same as No. 301 \$1.25

HIGHEST QUALITY TOURNAMENT ARROWS



No. 309 FOOTED TOURNAMENT TARGET ARROW

This arrow is flight tested to group in the red at 60 yards. It is especially recommended for accurate shooting at the longer ranges. Its barrelled, stream-lined construction affords an arrow that is exceptionally light, yet strong and sturdy, and one

that flies perfectly true without fliriting. A 27-inch arrow for a 45-pound bow weighs approximately 290 grains. Perfectly balanced. Matched to three grains in weight. Closely matched in spine. It is footed with beefwood for added strength. Four point splice.

In ordering state drawing length, and the drawing weight of your bow; also, color and design of crest and color feathers desired. Equipped with perfection steel pyles or regular steel parallel pyles.
No. 309 Footed Tournament Arrow \$16.00 doz.



No. 109 FOOTED TOURNAMENT TARGET ARROW

Flight tested. Made of finest selection of Port Orford Cedar. Footed with beefwood or black hickory. Beautifully finished. Crested as desired. Steel par-

allel pyles, molded plastic nocks. Matched to within three grains in weight. Closely matched in spine. State drawing length; weight bow, and preference

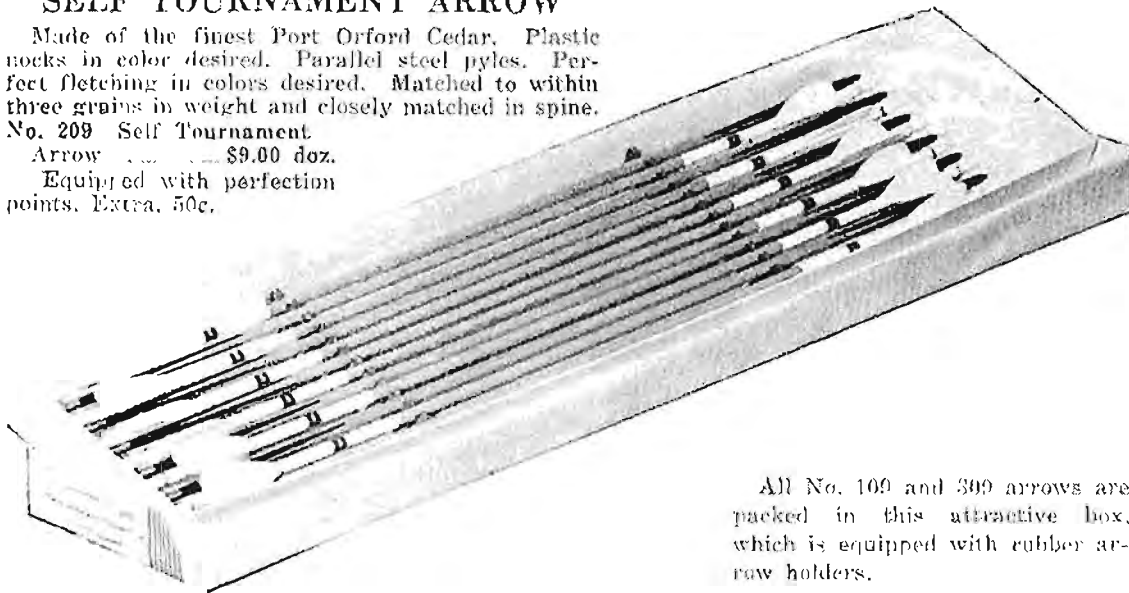
of feathers and crest; also your choice of footing.
No. 109 Footed Tournament Arrow \$15.00 doz.
No. B-109 As above - beefwood footing 15.00 doz.



SELF TOURNAMENT ARROW

Made of the finest Port Orford Cedar. Plastic nocks in color desired. Parallel steel pyles. Perfect fletching in colors desired. Matched to within three grains in weight and closely matched in spine.

No. 209 Self Tournament.
Arrow \$9.00 doz.
Equipped with perfection points. Extra, 50c.



All No. 109 and 309 arrows are packed in this attractive box, which is equipped with rubber arrow holders.

HOW TO ORDER BEN PEARSON ARROWS

Give catalogue number and drawing length (length from the bottom of the nock to the shoulder of the pyle. See sketch). State pounds pull (at full draw) of the bow with which the arrows are to be used. This will enable us to send arrows that are properly spined for your bow. Avoid specifying diameter of your arrows, since this depends on the length of arrow, the weight of bow and character of wood.



Drawing Length

Use table below to determine proper equipment for your use.



Spread Measurement

Spread-measurement to determine suitable Arrow length:

Spread	Arrow Length
48-50 inches	19-20 inches
51-53 inches	21-22 inches
54-56 inches	22-23 inches
57-59 inches	23-24 inches
60-62 inches	24-25 inches
63-65 inches	25-26 inches
66-68 inches	26-27 inches
69-71 inches	27-28 inches
72-74 inches	29-30 inches

POPULAR PRICED TARGET ARROWS



No. 105 MATCHED FOOTED ARROW

Stock arrow made of select Port Orford Cedar with beefwood or black hickory footing. Plastic nocks. Brass parallel pyles. Matched to within 7

grains in weight. No great variation in spine. Perfectly fletched, colored cock feathers. Beautifully crested. Made in 24, 25, 26, 27, and 28-inch lengths

only. Please state drawing length and bow weight. No. 105 As above, black hickory footing \$9.00 doz. No. B-105 As above, beefwood footing 9.00 doz.



No. 103 MATCHED FOOTED ARROW

A practice arrow that is durable and capable of good scores. Matched to within 16 grains in weight. No extremely wide variations in spine, as each dozen

arrows come from the same unit of select Port Orford Cedar. Durable, hardwood footing. Plastic nocks. Brass parallel pyles. Colored cock feather.

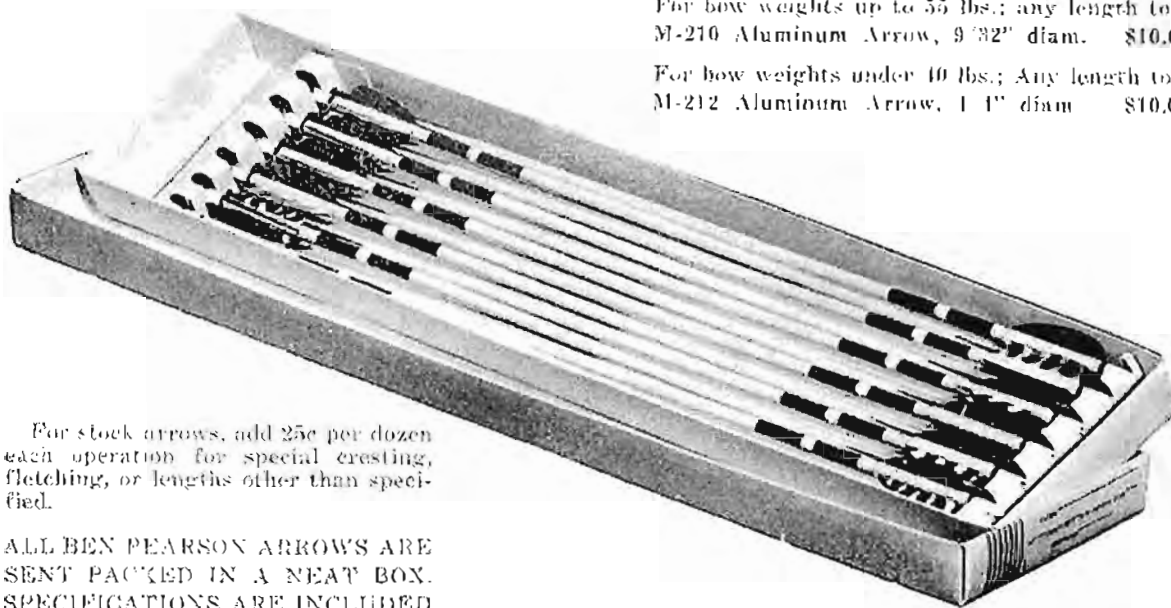
Made in 24, 25, 26, 27, and 28-inch lengths. State drawing length desired. No. 103 Footed Arrow \$6.00 doz.



ALUMINUM ALLOY ARROWS

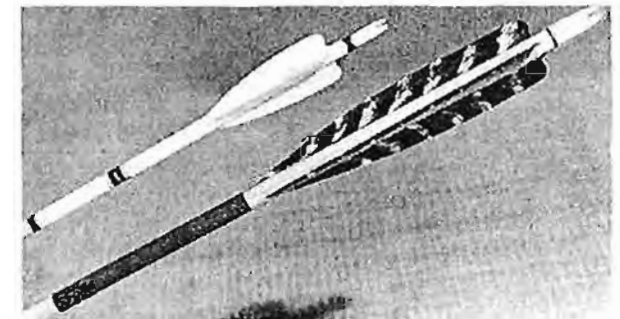
A properly designed and balanced metal arrow; Plastic nocks; preference of crestring and fletching. For bow weights up to 55 lbs.; any length to order. M-210 Aluminum Arrow, 9/32" diam. \$10.00 Doz.

For bow weights under 40 lbs.; Any length to order. M-212 Aluminium Arrow, 1/4" diam \$10.00 Doz.



For stock arrows, add 25c per dozen each operation for special crestring, fletching, or lengths other than specified.

ALL BEN PEARSON ARROWS ARE SENT PACKED IN A NEAT BOX. SPECIFICATIONS ARE INCLUDED



Truly a shaft is no better than the feathers that guide it. Perfect fletching is one of the most important qualities of a good arrow. Improved methods in handling and large-scale consumption (over 14,000 pounds of feathers were used by this company in 1940), enable BEN PEARSON to supply arrows fletched with select turkey pointer feathers of the highest quality, perfectly placed on the shaft, at moderate prices. (Approximately one-third of the feathers are rejected as culls.

In the illustration above, note the length and careful spiralling of the hunting feather. This feather design was adopted after many tests with broad-head arrows.

TARGET, JUVENILE AND FLIGHT ARROWS



No. 207 MATCHED SELF ARROW

Made of select Port Orford Cedar. Matched to within 15 grains in weight and closely matched in spine. Colorful moulded plastic nocks. Fletched with barred or colored barred feathers. Beautifully stock crested and nicely finished. Parallel brass

pyles; 24, 25, 26, 27 and 28-inch lengths only; 24 and 25-inch lengths are 9/32-inch in diameter. Longer lengths are 5/16-inch. It is important that you state length desired when ordering.

No. 207 Matched Self Arrow \$4.50 doz.



No. 205 SELF CEDAR ARROW

A sturdy well-made Port Orford Cedar Arrow. Plastic nocks. Brass parallel pyles. Well fletched with barred feathers. Stock crested; 5/16 inch size

only; 24, 25, 26, 27, and 28-inch lengths; state length desired when ordering.

No. 205 Self Arrow \$3.50 doz.



No. 201 SELF BIRCH ARROW

Made of well-seasoned northern birch. An inexpensive arrow that will stand lots of rough treatment; 5/16-inch size only. Brass parallel pyles. Barred feathers; 24, 25, 26, 27 and 28-inch lengths only.

Stock crested. When ordering please state length desired.

No. 201 Self Birch Arrow \$2.50 doz.

Packed one gross to box 2.25 doz.



No. 218 JUVENILE BIRCH ARROW

A sturdy birch arrow for the young archer. Nicely finished. Brass parallel pyles. Fletched with three barred feathers. Stock crested; 1/4-inch size and 18-

inch length only.

No. 218 Juvenile Birch Arrow \$1.75 doz.

Packed one gross to box 1.60 doz.



FLIGHT ARROWS

A self arrow made of extra select Port Orford Cedar. Fitted with plastic nock and special 5/32 inch brass flight point. Barrelled to a degree depending on weight of bow and fletched with celluloid

vanes. Smooth light finish. State arrow length desired and weight of bow. Not crested.

No. 301 Flight Arrow \$1.00 each

No. F-301 As above, except footed 1.25 each

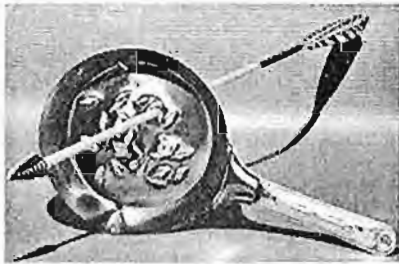


Flight shooting is a competitive form of archery, challenging brawn and skill. The national record of 517 yards and 1 foot was set by Curtis Hill of Dayton, Ohio, at St. Paul in 1929. Only the finest of raw materials can be used for flight bows and arrows. Most flight bows are short, recurved, and very heavy in drawing weight. Arrows are ordinarily made as light and stiff as possible.

Pictured above is Gene Warnick of Portland, Oregon. Mr. Warnick has won many flight events in the Pacific Northwest and won the national title for flight shooting at San Francisco in 1938. He is an ardent hunter with the bow as well as one of the best target archers of the Northwest.

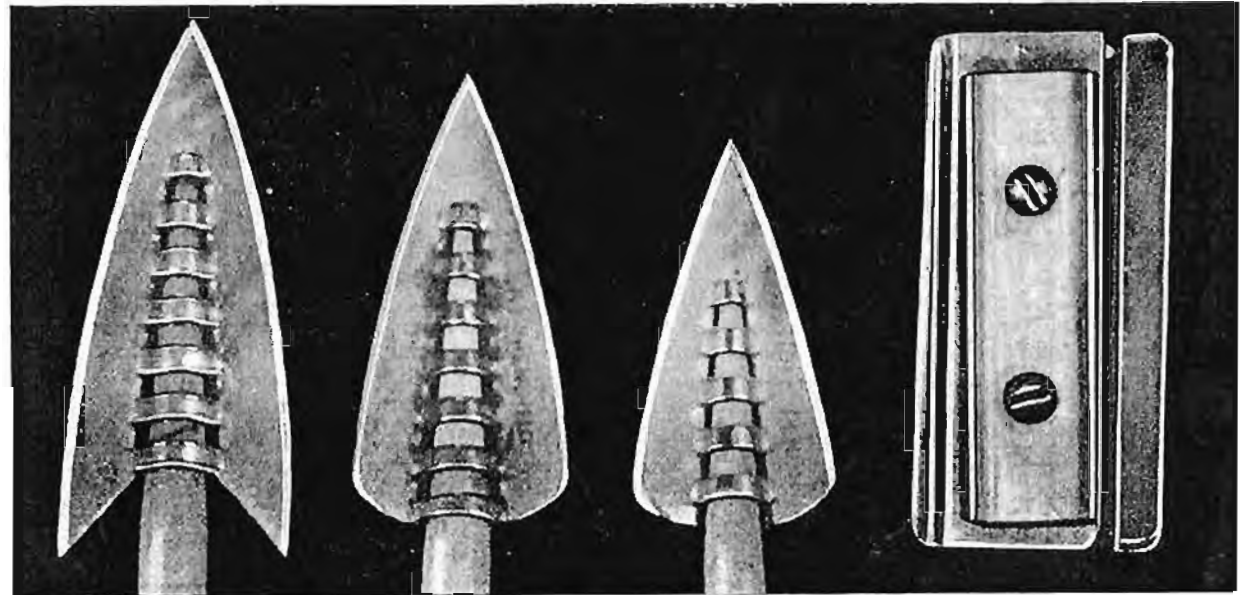


Pictured above is a hawk that will never steal another chicken. This one encountered one of Mr. Joe Boggs' well-named broadhead arrows. Mr. Boggs of McPherson, Kansas, states that the wing spread of the killer was 48 inches.



The excellence of the BEN PEARSON patented broadhead is demonstrated in the picture above. After being shot thirty times into an ordinary frying pan, the blade showed no ill effects. Under the same treatment, softened ferule heads quickly came apart, and no head that was tested came near equalling the performance of the blade that has been so popular that over 100,000 have been sold to date. The lightness of this head combined with its strength makes it ideal for manufacturing well-balanced true-flying broadhead arrows that have a flat trajectory for more accurate shooting.

HUNTING ARROW POINTS



BH-1

BH-2

BH-3

POINTING TOOL

BROADHEAD ARROW POINTS

Our patented one piece steel broadheads answer the need for a practical, efficient, light head at a moderate price. Only the finest high-grade steel correctly tempered and blued goes into the manufacture of this perfectly balanced broadhead.

Due to their special design they have remarkable penetrating power and will fly true in the air without "planing." We receive numerous letters attesting to the excellent qualities of penetration and durability of these arrow heads. They will fit any size shaft and are furnished in sizes and shapes as illustrated. Please order by number.

No. BH-1, BH-2, BH-3

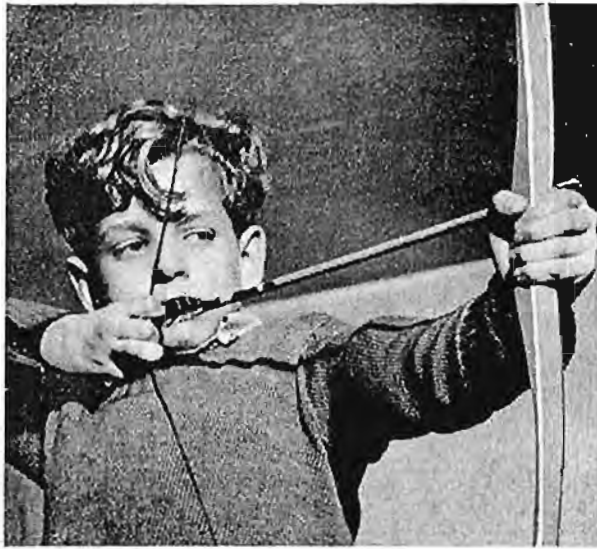
\$1.50 Doz.

POINTING TOOL

For those who wish to make their own hunting arrows we have developed this tool, which quickly and accurately points the shaft to receive our patented one piece steel broadhead. Nice to have in one's kit on hunting trips to make or repair arrows.

No. T-20 Pointing Tool . . . \$1.00

Testimonial: "I am sending you a picture of a deer I shot using your arrows. The arrow passed completely through the animal and was sticking in a stump when I recovered it. It had traveled about fifteen feet in the air after cutting a rib on one side and nicking one on the other. The deer dropped within twenty yards."



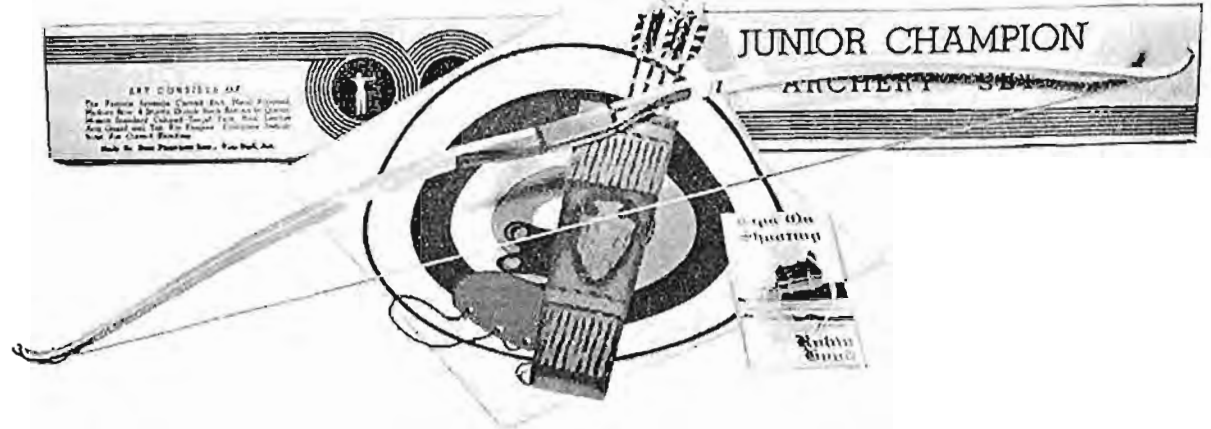
Nothing has such a universal appeal to young or old as the bow and arrow. One of the reasons for this is the fact that for 50,000 years it was man's best weapon. The legendary archers of history: Robin Hood and his men; William Tell; the American Indian, all loved this ancient weapon. What cleaner sport can be found for children? With his bow and arrow he feels kinship with the great archers of the past. BEN PEARSON juvenile bows and arrows are not mere toys but honestly made archery tackle that will last the young archer through a long period of his archery career.

JUVENILE ARROWS

An arrow made especially for the young archer. 18-inch length; 1/4-inch brass nocks. Nicely fletched with three barred feathers. (As illustrated on page 12.)

No. 218 Juvenile Birch Arrow\$1.75 Doz.

JUVENILE ARCHERY SETS

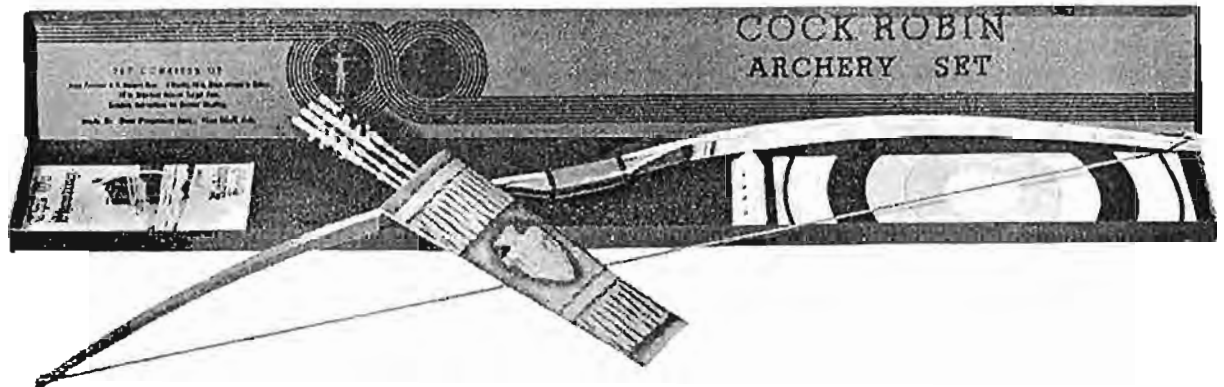


JUNIOR CHAMPION ARCHERY SET

For ages 6 to 12. This set includes the famous juvenile curved-end, hand finished, hardwood bow. Four foot length. Four, well fletched, sturdy birch arrows in quiver; 16 inch standard color target

face; leather arm guard and shooting tab. Complete instructions for correct shooting. Packed in special display carton.

No. S-4-HR Junior Champion Set\$2.95



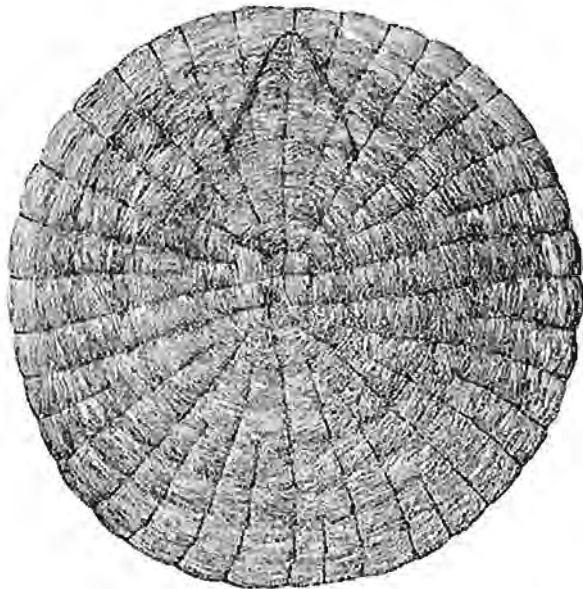
COCK ROBIN ARCHERY SET

For ages 6 to 12. Set consists of: Sturdy 4-foot hardwood bow. Four well made 18-inch arrows in quiver. One 16-inch standard color target face.

Complete instructions for correct shooting. Nicely packaged as illustrated.

No. S-4-H Cock Robin Set\$1.95

TOURNAMENT TARGETS



Standard Tournament Target

Hand-made throughout of specially cured rye straw. The center of the target is scientifically constructed to be a self-binding unit. This insures extra life to the target as a whole. Stitched throughout with a tarred sisal in even web form. Neatly trimmed. Equipped with standard 48-inch non-glaring face. With reasonable care this target will last many seasons.

No. RTT-48 48-inch Rye Target \$15.00
(Shipping weight approximately 70 pounds.)

Same as above except 36-inch diameter.

No. RT-36 36-inch Rye Target \$12.00

Same as above, except 24-inch diameter.

No. RT-24 24-inch Rye Target \$ 8.00

NOTE: The above targets are all priced F. O. B. Pine Bluff, Arkansas.

STANDARD TARGET STAND

Made of tough, soft wood designed to hold target at proper height and angle.

No. STS Target Stand, F.O.B. Pine Bluff \$1.50



TARGET FACES

These target faces are exact in dimension. Full color. Sharply defined colors and non-glaring. Special white cotton material pre-shrunk and sized.

No. CF-48 48-inch Cloth Target Face . \$1.50 each

No. CF-36 36-inch Cloth Target Face .90 each

No. CF-24 24-inch Cloth Target Face .65 each

Will be cut square unless specified cut round.

No. SS-48 48-inch Skirted Target Face \$2.10 each

No. SS-36 36-inch Skirted Target Face 1.40 each

No. SS-24 24-inch Skirted Target Face 1.00 each

Furnished with sewn skirt and draw string.

PAPER TARGET FACES

Made of heavy white paper in full color:

No. PF-48 48-inch Paper Target Face 50c each

No. PF-36 36-inch Paper Target Face 30c each

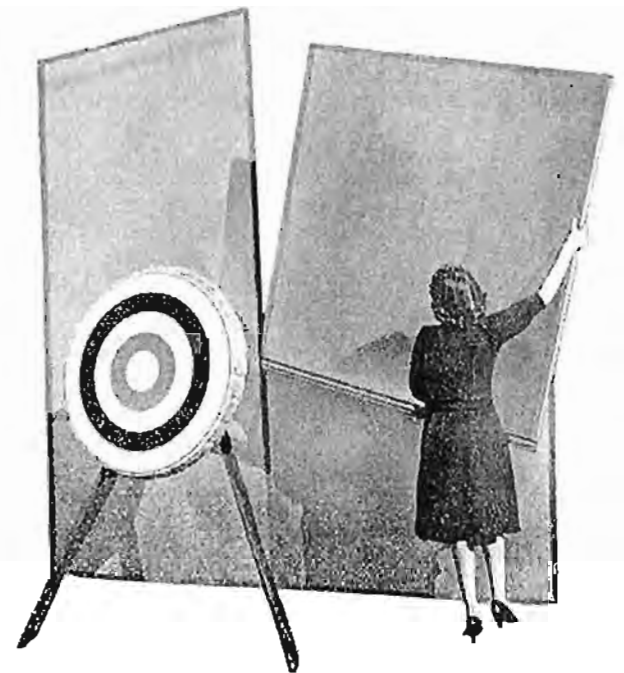
No. PF-24 24-inch Paper Target Face 20c each

No. PF-16 16-inch Paper Target Face 10c each

ONE COLOR INDOOR PAPER FACES

No. OC-21 24-inch Black on White Face 90c doz.

No. OC-16 16-inch Black on White Face 80c doz.



TARGET BACKSTOP

A light portable backstop that can be put up or taken down in a few minutes. This is laminated from a tough fibre board that will stand a lot of abuse. A knock-down easel accompanies each section. This is an ideal backstop for schools, indoor ranges, etc. Sections are 5-feet by 10-feet, with a self-locking break in the middle for ease in handling. Two sections are required for one target. Three sections for two targets, etc.

No. TBE Backstop, section 5'x10', with easel \$8.00

BACKSTOP PANELS

For indoor ranges, where it is possible to suspend the backstop from the ceiling, we recommend these backstop panels. They are sturdily built and will stand up under a lot of shooting. Sizes 5'x10', with reinforced straps to hang by. These are shipped in sections 5-feet square, with instructions and tape for joining the center.

No. TB 5' x 10' Backstop Panel \$6.50

SHOOTING ACCESSORIES



THE PERFECT SHOOTING GLOVE

Carefully styled and beautifully made of finest calf-skin, this glove will fit your hand comfortably. Finest cordovan leather tips.

No. PSG-1 Shooting Glove \$1.25

Sizes: Ladies and Juniors: Small, medium small, medium large, large.

Men's: Small, medium small, medium large, large, extra large.

Reinforced Shooting Glove

For those shooting heavy bows or whose fingers become sore with ordinary finger protection. The tips of this glove are made of two pieces of leather with a thin piece of quill between them. Gives a perfect release and will protect the fingers under any conditions.

No. PSGQ Reinforced Shooting Glove \$2.50

Shooting Tabs



No. TA-1 Cordovan, large or small 25c each

No. TA-2 Cowhide, large or small 15c each

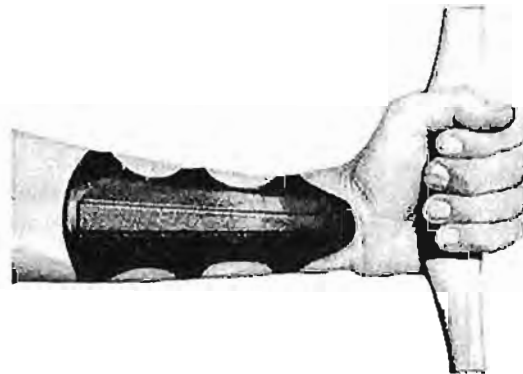


TARGET ARM GUARD

Designed to meet the demand for a light, thin, comfortable and efficient arm guard. Three concealed thin spring-steel stays sewn in. Equipped with elastic straps and adjustable fasteners. For ladies or men.

No. K-1 Cordovan Arm Guard \$1.25

No. K-2 Calfskin Arm Guard \$1.10



HUNTING ARM GUARD

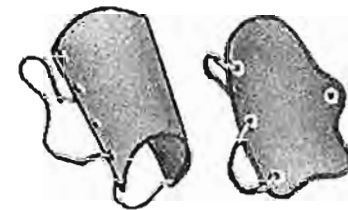
Built for hunting and roving. Has steel stays same as K-1, but straps and buckles are used instead of elastic. Straps and guard are all one piece of leather.

No. HG-1 Cordovan \$1.75

No. HIG-2 Calfskin \$1.50



One of the many trophies taken each year with the bow and arrow.



Standard Lace and Hook Guards

Equipped with hooks and elastic lace.

No. LG-1 Cowhide Guard, Large 75c

No. LG-2 Cowhide Guard, Small 65c

Single hook, small, genuine leather. Easy to put on or remove. A fine guard for schools, ranges, etc.

No. LGS-3 Single Hook Arm Guard 35c



WOMEN'S ACCESSORIES

LADIES' ENSEMBLE

Set consists of beautifully made two-tone target quiver with belt. Small two-tone leather pouch to carry bowstrings, etc. Colored leather arm guard. This ensemble comes in three standard colors, red and brown, white and brown, tan and brown. The quiver is handsomely embossed and decorated and is made of fine chrome elk leather.



No. LPE Ladies Ensemble

\$4.50



THE SMOOTHIE

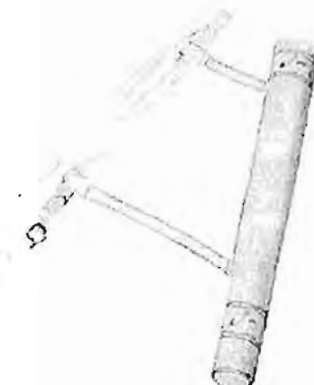
A finely made calfskin guard that many women find very useful in protecting loose collars, pockets, sleeves, etc., from the bowstring in shooting. Adjustable elastic straps hold it in place. Colors brown, red, white.

No. SMO Ladies' Shoulder Guard

\$1.00

LADIES' TARGET QUIVER

Well made target quiver with double straps, leather belt, and buckle. 18 in. long by 1 1/2 in. in diameter. Embossed decorations. Chrome Elk leather, it has a handsome trim in contrasting leather that is not illustrated.



No. LP-2 Mahogany Colored Strap Leather \$1.85

No. LP-3 Chrome Elk Leather with trim \$2.45

One of the reasons for the increased popularity of archery is the appeal it has for all ages of people. Women particularly enjoy it, as it is one sport they can engage in on a par with men. All archery tournaments have a women's division and women of all ages enter. It is an excellent sport for keeping figures trim. The most common rounds shot by women are the Columbia, 24 arrows shot at 50, 40, and 30 yards, and the National 48 arrows shot at 60 yards, and 24 arrows shot at 50 yards.

The growth of archery in schools and colleges has been tremendous in the last number of years because of its recognition by physical culturists as one of the best exercises to improve posture.

OUR FRONT COVER

The archer on the front cover is Pat Chambers of Pine Bluff, Arkansas, 1938 and 1939 National Archery Champion. Mr. Chambers holds the national record for the Single and Double York rounds. Shot the highest total score ever shot in a national tournament. He is a member of the Ben Pearson organization.



TASSEL

Nicely made; all wool. For cleaning arrows.

No. WT All Wool Tassel

50c each

QUIVERS - BOW CASES

TARGET QUIVER

A very neat and serviceable target quiver: 16 inches long, one and one-half inch diameter; gracefully tapered. Leather straps fastened to the quiver lead to a ring equipped with a belt hook. Holds six arrows suspended from your belt. Beautifully embossed. Moulded leather bottom. Solid oak-tanned strap leather in mahogany color.

No. CN-22 Target Quiver
each \$1.75

Heavy brown chrome elk leather:

No. CN-3 Target Quiver
each \$1.75



No. CN-22

IMITATION LEATHER QUIVER

A large well made Fabrikoid Quiver, equipped with a 42-inch belt and buckle, to which quiver is attached by means of a small loop. Worn around the waist. Twenty inches long; top diameter 2 1/2 inches, bottom diameter 1 3/4 inches. The bottom is made of heavy formed leather. Nicely embossed.

No. RR-1 Fabrikoid Quiver 85c

The same style as the RR Quiver but smaller in diameter. Holds six arrows. Twenty inches long; 2-inch top diameter; 1 1/2-inch bottom diameter. Nicely embossed.

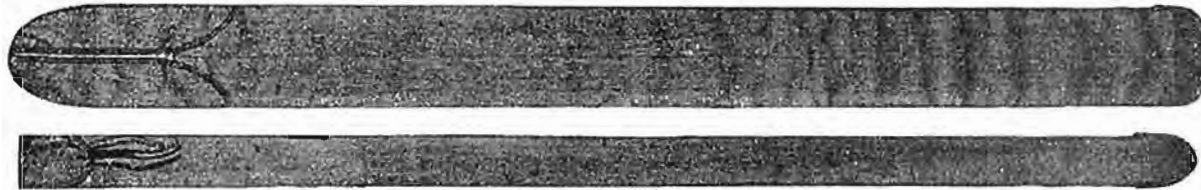
No. SR-1 Fabrikoid Quiver 75c



No. RR-1



Mr. Thomas Lee of San Francisco, California, drawing an ancient Chinese bow. This bow is over 100 years old and is about 65 pounds drawing weight.



BOW CASES

Your bow deserves the protection of a bow case. Cases described are stocked in two-inch graduations from 5 ft. to 6 ft. 2 in. They are made to accommodate bows of an overall length of one inch longer than these dimensions. The exclusive shape will fit both straight and recurved bows. Made from Teal cloth (two layers of special closely woven fabric bonded together with rubber) with whipcord lining. Bound and double sewn with heavy thread. Has

pocket located under flap for carrying an extra bowstring.

No. TL-1 Bow Case \$1.75

Twin case for two bows. Made from Teal cloth. Leather reinforced bottom. Has zipper fastener and double string pockets.

No. TL-2 Twin Bow Case \$2.95

(See Arrow Case on page 30.)



POCKET QUIVER

This quiver fits snugly in the hip pocket. Has loop for belt. Correctly shaped to hold the arrows. Very convenient. Made of heavy strap leather and chrome elk leather. Double stitched and riveted.

No. PQ Pocket Quiver \$1.00

HUNTING QUIVERS - HATS - POUCH

ARCHER'S HATS

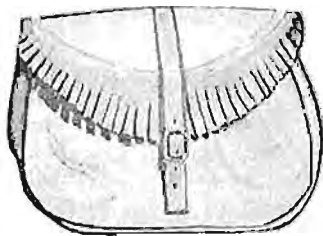


Attractive suede leather and felt hats, as illustrated. Colors green, brown, red, and tan. Sizes, small, medium, large.

No. AH-1 Archer's Hat, Suede Leather \$3.75

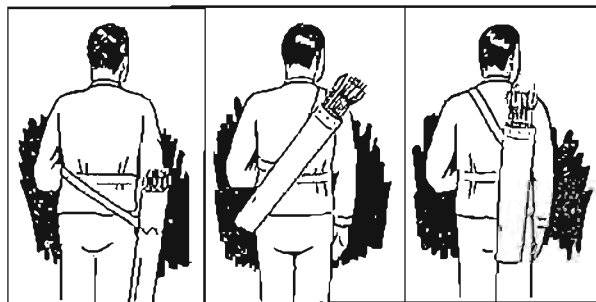
No. AH-2 Archer's Hat, Felt \$2.40

ARCHER'S POUCH



Handy large size pouch. Two-tone leather. Ideal for carrying extra bow strings, wax, lunch, etc. Strap and buckle fastener as illustrated.

No. AP Archer's Pouch \$2.50



The three popular ways of carrying Hunting Quivers



No. SN-2



No. SN-3

HUNTING QUIVER

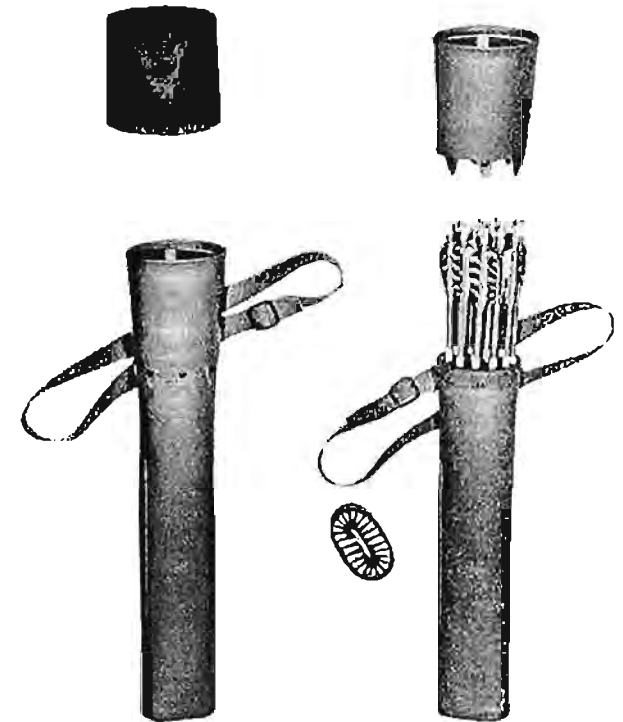
Large chrome-elk hunting quiver. Double stitched throughout. Form fitting shoulder strap holds the quiver in position for easy access to arrows. Divider strap to divide blunts from broadheads. Will hold eighteen arrows nicely. Strap and buckle illustrated. Handsomely embossed.

No. SN-2 Hunting Quiver \$6.50

DELUXE HUNTING QUIVER

The BEN PEARSON shoulder quiver, shown above is the result of much study and use of many types of quivers. Developed by Pat Chambers, it is a most practical quiver for the archer-hunter. Due to curve of the back, arrows will not rattle against one another, yet are in position for immediate use. The quiver may be slipped under the arm when negotiating heavy brush. Handsomely embossed and decorated.

No. SN-3 DeLuxe Hunting Quiver \$5.00



HUNTING QUIVER

Built to fill the need for a hunting quiver universally adaptable for all kinds of weather. Adjustable for carrying in any of the three popular quiver positions. Bristles are set inside the cuff of the quiver to prevent arrows rattling together. Separate leather hood can be attached for wet weather or brushy country. Zipper pocket in the side of quiver for extra bowstring, etc. Oiled silk cover for rain or wet snow. Also valuable when the quiver is transported or shipped. Made of heavy flexible brown chrome-elk leather, beautifully embossed. Holds about 15 arrows.

No. DR-1 Complete with belt, hood and cover \$8.25
 No. DR-2 Quiver and Belt only 6.50
 No. DR-3 Hood only 1.25
 No. DR-4 Oiled Silk Cover only .50

SEMI-FINISHED BOWS



Our semi-finished bows are made of select, well-seasoned stock. They are perfectly shaped for flat type, fast, hard shooting bows. They are worked so nearly to correct proportions that very little scraping is necessary to bring them into perfect balance and tiller. The string nocks are cut and they are ready to be strung so that any stiff places may be noted and marked for scraping. It's a simple matter to produce a good bow using these very excellent semi-finished staves. Instructions for completing come with each semi-finished bow.

Semi-Finished Bow, Lemonwood

Five feet nine inches long. Medium weight, good for bows to 40 pounds. Heavy weight, good for bows to 50 pounds.

No. UL-59 \$2.25
 No. FUL-59 Equipped with white fibre back \$3.25

Semi-Finished Bow, Lemonwood

Five feet, six inches long. Medium, good for bows to 35 pounds. Heavy, good for bows to 45 pounds.

No. SU-56 \$2.00
 No. SUL-56 Equipped with fibre back .. 3.00

Semi-Finished Bow, Lemonwood

Five feet long. Good for bows to 25 pounds.

No. UL-50 \$1.75
 No. FUL-50 Equipped with red fibre back .. 2.50

Semi-Finished Bow, Hickory

Five feet, six inches long Good for bows to 40 pounds.

No. H-51 \$1.50

Semi-Finished Bow, Hickory

Five feet, six inches long. extra wide. Medium, good for bows to 45 pounds. Heavy, good for bows to 65 pounds.

No. H-55 \$1.75

Recurved Hickory Semi-Finished Bow

Recurved ends as illustrated. Extra wide. Five feet, six inches long. Medium, good for bows to 45 pounds. Heavy, good for bows to 65 pounds.

No. U-59-R \$2.75

For any person who is handy with a drawing knife and scraper, the making of a bow will be a real pleasure. There are certain sound principles which must be followed if a bow of excellence is to be achieved. BEN PEARSON materials which are available for such construction purposes are the very best quality.

BOW BACKING MATERIAL

Clarified Calskin: 1 1/4 inch wide for bows up to 6 feet long.

No. RH-2 \$1.00 each
 1-3/4 in. wide \$1.25 each

Fibre Backing Strips: Red, white, or black. 1-1/4 in. wide, for bows up to 6 feet long.

No. FB-3 50c each
 1-3/4 in wide 65c each

LEATHER FOR BOW HANDLE

Calfskin: Edges machine skived to feather edge. 3-3/4 in. x 6 in.

No. LBH-1 25c each
 Strips for spiral wrapped handle.

No. LBH-2 25c each

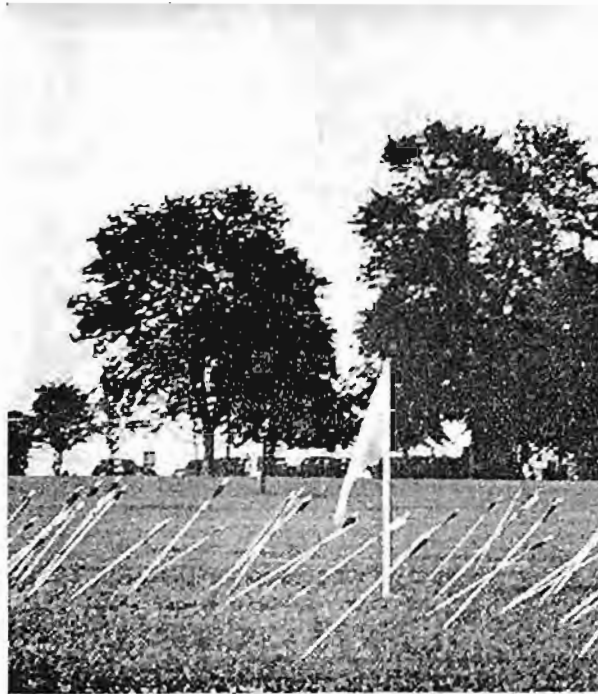
Barbours No. 12 Irish Flax for making bow strings. 2-oz. ball.

No. SPX \$1.00 each

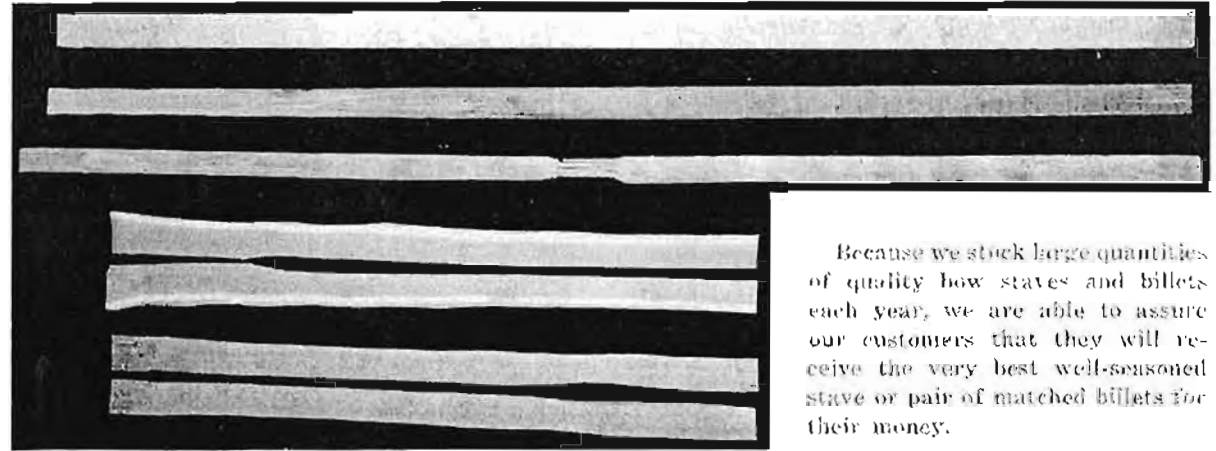
Bowyers wax. 2-oz. cake.
 No. BXW 30c each

CLOUT SHOOTING

One of the most spectacular target events is the Clout. This is also one of the oldest forms of archery competition. It is shot from a distance of 180 yards (almost the maximum distance a target bow will send an arrow) at a target laid out on the ground which is usually marked with a flag. This was a favorite shot of the English archers in battle. A body of troops could not withstand a volley of arrows without many casualties. The sighting is ordinarily done by using a mark on the lower limb of the bow which is lined up with the flag in the center of the clout ring. From the spectators point of view it is a beautiful sight to watch as the arrows are about 300 feet in the air at the top of their flight. As can be seen by the picture below, archers get very skillful at this event and often put an arrow through the flag or the standard supporting it.



BOW STAVES AND BILLETS



Because we stock large quantities of quality bow staves and billets each year, we are able to assure our customers that they will receive the very best well-seasoned stave or pair of matched billets for their money.

Since the craftsman is largely responsible for the outcome of his bow, we can not replace staves after they have been worked on. If, for some reason, you may receive wood that in your opinion will not make a good bow, it should be returned immediately for exchange or credit.

LEMONWOOD BOW STAVES

3 1/4" x 1 1/2" x 5'2" with glued handle riser	\$ 1.25
3 1/4" x 1 1/2" x 5'8" with glued handle riser	1.50
3 1/4" x 1 1/2" x 5'10" with glued handle riser	1.60

All handle risers are of select walnut shaped to handle outline.

HICKORY BOW STAVES

Manufactured of exceptionally good hickory.	
No. HS-1 Hickory Bow Stave 1 1/4" x 1 1/2" x 5'6"	\$.65
No. HS-2 Hickory Bow Stave 1 1/4" x 2" x 5'6"	.75

(Lemonwood or hickory staves shaped to approximate bow outline—add 50 cents.)

OSAGE ORANGE BILLETS

No. OM-1 First Quality Osage Billets	\$ 7.50
No. OMS-1 Spliced with back worked to same grain from end to end	10.00
No. OM-2 Second Quality Osage Billets	5.00
No. OMS-2 Spliced with back worked to same grain from end to end (These staves are as good as most listed as first quality)	7.50
No. OM-3 Third Quality Osage Billets	2.50
No. OMS-3 Spliced	4.50

YEW BILLETS

No. YM-1 First quality Yew Billets	\$ 7.50
No. YMS-1 Spliced and back properly prepared for making bow	10.00
No. YM-2 Second Quality Yew Billets	5.00
No. YMS-2 Spliced and back properly prepared for making bow	7.50

CONSTRUCTION KITS



It's real fun to fashion your own bow and arrows. To school and camp crafters and individual craftsmen we recommend these Archery Construction Kits. The materials are the very best for the money. All operations requiring special tools have been done. Complete instructions are furnished with each kit.

Craftsman Archery Construction Kit

Kit consists of extra select hickory stave 5'6" long, shaped to bow outline for making flat-type bow. Will make bow pulling as much as 40 pounds if desired. Seven Port Orford Cedar shafts with brass parallel pyles attached, and string nocks cut. Sufficient base ground vanes cut from turkey feathers to fletch the shafts, fletching jig, fletcher's cement, flux string, leather for handle, illustrated instruction.

- No. CK-1 Craftsman Construction Kit \$2.95
 No. CKL-1 Same as above with lemonwood stave instead of hickory..... \$3.50

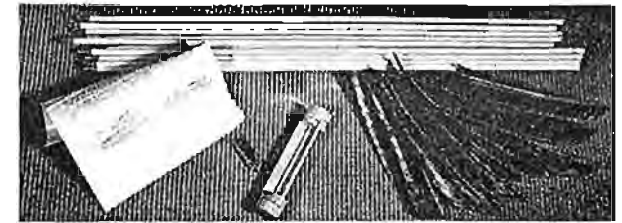
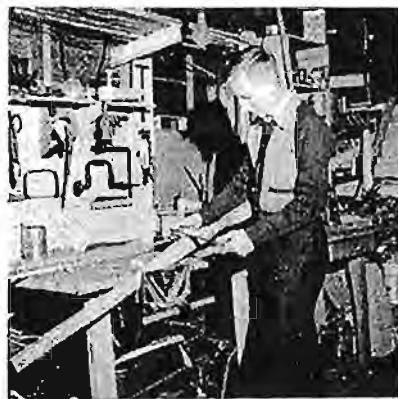
Junior Archery Construction Kit

Kit consists of five-foot select hickory bow stave with contrasting wood handle riser, shaped to flat bow outline. Six 25-inch birch shafts with nocks cut and points attached; sufficient feathers for fletching; fletcher's cement; complete instructions.

- No. CKJ-1 Junior Construction Kit \$1.95

There is an unusual feeling of satisfaction that comes from making your own bow and arrows. It is a good idea, however, to make your first bow from a lemonwood or hickory stave to gain the proper experience before tackling a pair of yew billets or an Usage Orange stave. Once you have made

a good bow and a set of arrows, you will appreciate the deep-rooted interest in archery as a sport and as a craft. For any person who is handy with a drawing knife and scraper, the making of a bow will be a real pleasure. There are certain sound principles which must be followed if a bow of excellence is to be achieved. BEN PEARSON materials which are available for such construction purposes are of the very best quality and can be made into tackle which will be a pleasure to shoot and a pride to own. Instruction pamphlets accompanying construction kits and semi-finished materials are complete. They have been compiled by master craftsmen and written in language easily understood by the merest novice. Many tournaments each year are won by archers who have made part or all of their own equipment. Much of the research and development of modern tackle has been done by individuals who have taken to the making of archery tackle as a hobby.



BEN PEARSON ARROW CONSTRUCTION KITS

BIRCH ARROW KIT

Consists of: 12 birch shafts nocked for the string, points carefully knurled on, ground base feathers, fletching tool that will set all three feathers accurately on the shaft, fletching cement, complete instructions. Made only in 24, 26, 28 inches. State length desired. 5/16 inch diameter only.

- No. BAK Birch Arrow Kit \$1.50

PORT ORFORD CEDAR ARROW KIT

Consists of: 12 Port Orford cedar shafts nocked for the string, points carefully knurled on, ground base feathers, fletching tool that will set all three feathers accurately on the shaft, fletching cement, complete instructions. Made only in 24, 26, 28 ins. State length desired. 5/16 inch diameter only.

- No. CAK Cedar Arrow Kit \$1.75

FOOTED ARROW KIT

Consists of: 12 carefully selected Port Orford cedar shafts sanded perfectly round and uniform, equipped with our special four-point beefwood footings. Shafts are fitted with moulded plastic nocks and short steel pyles, fletching tool that will set all three feathers accurately on the shaft, fletching cement, complete instructions. Made only in 24, 26, 28 inches. State length desired. 24 inch length is 9/32 inch in diameter, longer lengths are 5/16inch.

- No. FAK Footed Arrow Kit \$1.50

BROADHEAD HUNTING ARROW KIT

Consists of: 12 select Northern birch shafts, made from split bolt stock so that they are straight grained, fitted with our patented, one-piece steel broad-head points. The feathers are select, long, ground base, for hunting arrows. The nocks are cut for the string, fletching tool that will set all three feathers accurately on the shaft, fletching cement, complete instructions. Made only in 24, 26, 28 inches. State length desired. 24 inch length is 5/16 inch in diameter, longer lengths are 11/32 inches.

- No. HAK Hunting Arrow Kit \$4.00

FOOTED ARROW SHAFTS

Our footed shafts are made of the best selection of Port Orford Cedar, equipped with our special black hickory footings or with beechwood footings. Four-point splice, perfectly round, straight grained. Shafts of each dozen are made from the same unit of stock. Sanded but not finished. Sizes 9/32 in., 21/64 in., and 11/32 in.

No. FAS-1 \$2.75 per dozen
 Size 3/8 in. \$3.00 per dozen

In ordering, state size and type footing.

MATCHED FOOTED SHAFTS

Very select stock. Fitted with plastic nocks and parallel steel pyles. Matched to three grains in weight. Closely matched in spine. Nicely finished. In ordering, state color nocks desired, drawing length, and weight of bow.

No. FAS-2 \$9.00 per dozen

BARRELLED FOOTED SHAFTS

These shafts same as above except for barrelled construction.

No. FAS-3 \$10.00 per dozen

PORT ORFORD CEDAR SHAFTS

Extra Select: Straight-grained Port Orford Cedar Shaft Shafts. Perfectly round and uniform in size. Shafts of each dozen from same unit of stock. Sizes 9/32 in., 21/64 in., and 11/32 in.

No. POC-1 \$1.00 per dozen
 Size 3/8 in. \$1.25 per dozen

MATCHED CEDAR SHAFTS

Same as No. POC-1 except closely matched in spine and to 5 grains in weight. Order by size or state length draw and weight bow.

No. POC-2 \$2.00 per dozen

Select Port Orford Cedar Shafts: Made of high-grade stock. Perfectly round and uniform in size. No culls. Sizes 9/32 in., 21/64 in., and 11/32 in.

No. POCM 60c per dozen
 Size 3/8 in. 75c per dozen

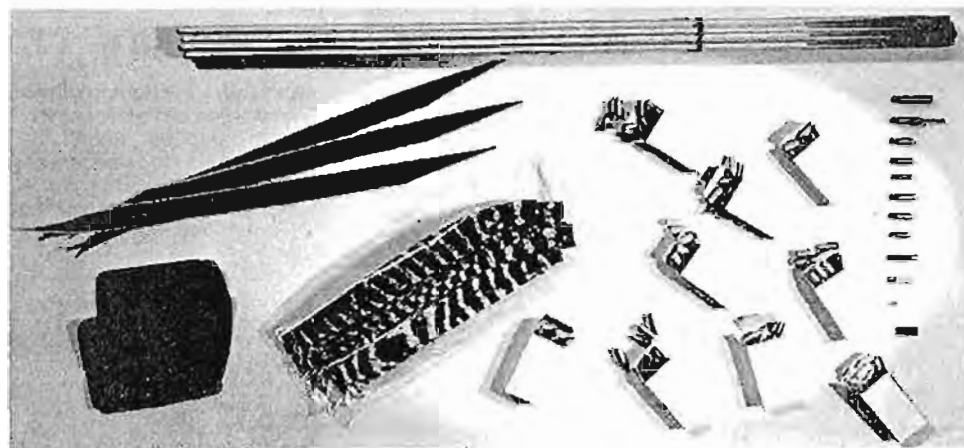
TURNED BIRCH SHAFTS

Made of extra select Northern Birch stock. Shafts of each dozen made from the same unit split bolt stock. Straight grain. Perfectly round and uniform in size. These are exceptionally fine birch shafts. Suitable for highest grade hunting arrows. 5/16 in. and 11/32 in. x 30 in. long.

No. BAS-1 75c per dozen
 Size 3/8 in. x 30 in. \$5c per dozen

ARCHERY MATERIALS

"I recently won our city tournament shooting a set of arrows made from the shafts received from you. I am more than delighted with the spine of these shafts and feel that they are matched much more closely than I will be able to meet them for a long time." (Letter from an Indian archer referring to our FAR footed Arrow Kit.)



BIRCH DOWELS

Good grade millrun birch dowels. Sizes 5/16 in. x 30 in.

No. BD-10 40c per dozen

ARROW FOOTINGS

Select Beechwood Footing. Sizes 3/8 in. x 3/8 in. x 8 in.

No. BF-11 50c per dozen

Slotted 5 inches 60c per dozen

FEATHERS

Turkey Feathers: Select, full length ground base, perfectly surfaced, turkey pointers. Cellophane wrapped. Enough for 1 dozen target arrows.

No. TPB-10 Natural barred 35c per dozen

No. TPB-20 Natural black 40c per dozen

No. TPW-10 Natural white 50c per dozen

No. DPB-10 Dyed barred 40c per dozen

No. DPW-10 Dyed white 60c per dozen

Colors dyed: yellow, blue, orange, purple, red, or green.

TARGET ARROW POINTS

Short parallel brass pyles. Sizes 1/4 in., 9/32 in., and 5/16 in.

PB-1 30c per dozen

Short parallel steel pyles. Sizes 1/4 in., 9/32 in., 5/16 in., and 11/32 in. State size.

PS-1 40c per dozen

Perfection steel points. Extra thin wall. Sizes 7/32 in., 1/4 in., 9/32 in., and 5/16 in.

PPS-2 60c per dozen

Blunt Roving Point: Steel, sizes 11/32 in. and 3/8 in.

PRS-3 50c per dozen

ARROW NOCKS

Moulded Plastic Nocks: Correctly designed, attractive, durable. Replaceable when damaged. Colors: Red, blue, orange, yellow, jade, green, black, and white. Sizes 7/32 inch, 1/4 inch, 9/32 inch, and 5/16 inch.

No. PNM 35c per dozen

Size 11/32 in. 50c per dozen

Alumfaum Nocks: Sizes 1/4 in., 9/32 in., 5/16 in.

No. AN 60c per dozen

Straight red fibre inserts.

No. FIN 10c per dozen

ACCESSORIES - BOOKS

BEN PEARSON FLETCHING TOOL



A rugged aluminum die casting equipped to apply all three feathers without waiting for the others to set. Fits all sizes of shafts, straight or tapered. Takes vanes to 5 inches long. Puts feathers on straight so that either left or right wing feathers may be used.

No. PJ-5 Fletching Tool \$2.50

Set of three extra clips for spiral fletching, with either left or right wing feathers. State which when ordering \$1.25

TENON CUTTER

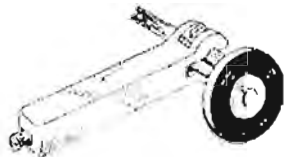


A tool for cutting the tenon or shoulder for points or nocks. A tube is provided as a guide to center the shaft, and by pushing the shaft against the revolving cutter (preferably mounted in lathe chuck) the tenon is quickly and accurately cut. Means are provided for adjusting the depth. May be used in brace or hand drill.

No. T-25 For 5/16 shafts \$2.50
For 9/32 shafts 2.50

Parts for converting 5/16" to 9/32" or vice versa \$1.25

KNURLING TOOL



A handy tool for attaching brass points and aluminum nocks. Adjustable from 1/4" to 3/8". Small enough to carry in the arrow box, yet sturdy and capable of semi-production use.

No. T-35 Knurling Tool \$3.00

FLETCHER'S CEMENT

A very excellent cellulose cement for fletching arrows. Also for household use, repairs, model building, etc. This cement is used exclusively in fletching all Ben Pearson arrows. If properly used, the vanes positively will not come loose.

No. FC-5 Fletcher's Cement
2 oz. Tube
25c Each



STRING SERVER

A fine tool for serving bow strings at the nocking point. Small enough to be carried in the tackle box, it is fast to use, does a neat job, and is simple and compact.

T-90 String Server
\$1.00

ARCHERY BOOKS

"The Spencer System of Shooting the Bow" by Stanley F. Spencer. Price \$2.00

"Archery Today" by Harry McEvoy, Jr. Price 50c

"Bows and Arrows" by James Duff. Price \$1.00

"Archery" by Reichart & Keasey. Price \$1.00

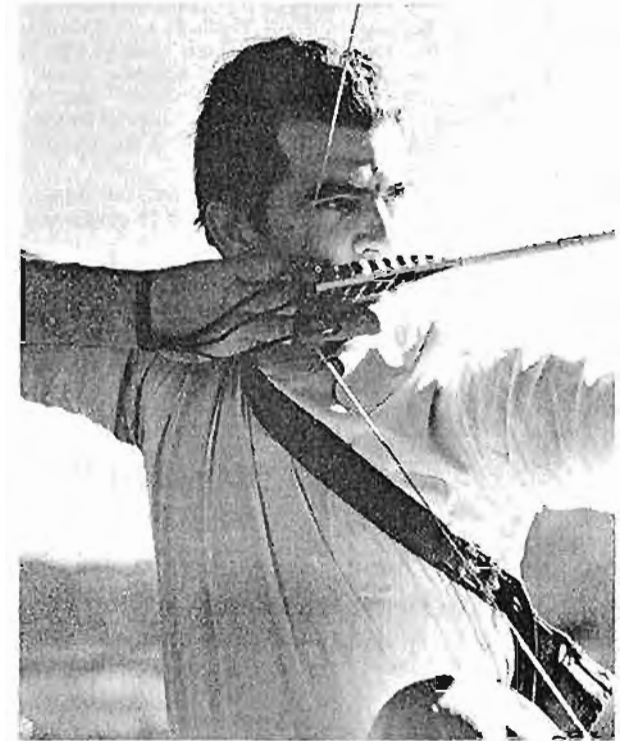
"The New Archery-Hobby-Sport-Craft" by Paul H. Gordon. Price \$3.50

"Archery Shooting Technique" by Heber Butts, M.D. Price 75c

"Modern Archery" by Arthur W. Lambert, Jr. \$3.00

"Archery" by Robert P. Elmer, M. D. Price \$5.00

"The Flat Bow" by Hunt and Metz. Price 50c



Howard Hill, North Hollywood, California, one of the most colorful figures in archery. His work in moving pictures has had a great deal to do with the increased popularity of archery in recent years. Has killed most big game animals on the American continent. Shoots a 100-pound bow. Makes laminated bamboo bows, between pictures and hunting trips. Doesn't compete in target tournaments and never misses a field tournament he is able to attend. Shoots rapidly, uses no sighting device. Cuts a hanging thread with a single arrow as an exhibition shot. Mr. Hill has been shooting the bow and arrow for the past 15 years. Developed his own style of shooting, which has been copied by a great many field archers. At one time he won the national flight shoot using a bow with a 170-pound pull. Shot a buffalo for the moving pictures from the back of an Indian pony, killing the animal with a single arrow. Made the spectacular archery shots in "The Adventures of Robin Hood." Says his toughest assignment was to hit the breast-plate of a man on a horse at full gallop. This plate, made of balsa wood and backed with steel, was about 12 inches square.



A William Tell novelty shoot held in a recent tournament. Anyone hitting the outlined figure, of course, was disqualified. The winner played safe on his first arrow and then placed three arrows almost touching to pierce the apple. Novelty events are becoming more and more popular at archery tournaments and special awards are usually made to the winner. They relieve the formality of serious target shooting and are enjoyed by everyone.

It is our conclusion that ARCHERS make the best archery tackle. Of the members of the BEN PEARSON organization more than eighty are ardent archers. Whether you order the lowest priced equipment or the finest, you can rest assured that an archer who understands the reason for care and precision in tackle has worked on it. The careful tilting of BEN PEARSON bows is done by archers who know the feel of a sweet shooting bow; the fletching by archers who have watched the flight of many an arrow.

BOWSTRINGS - SIGHT - Etc.

BOW SIGHT



Light in weight. Adjustable both vertical and horizontal with one thumb screw. Finger stop which makes uniform arrow rest of the forefinger. May be attached using tape or thread. Furnished with leather pads for protection of bow.

No. S-22 Bow Sight \$1.50 each

AIMING ENSEMBLE



Set consists of ground clip for holding point of aim; toe markers and marker for point of aim. Markers rest flush with the ground. Range finder for locating proper place for point of aim at various distances. Complete instructions for use.

No. PAE Aiming Ensemble 50c

GROUND QUIVER



Made of 1/4-inch diameter iron with rack for bow. Enamel finish.

No. GQ-1 Each 50c



Demountable cast aluminum head; steel rod. Has bow rack and cigarette holder. Will pack conveniently in arrow case.

No. GQ-2 Each \$1.00

GQ-1

GQ-2

LAY-LATEX BOWSTRING

A new development in string construction. Finest Irish Flax treated with a special formula of latex rubber. Twisted and served under high and uniform tension. Does not fray or require waxing. Will not untwist or stretch. Very light in weight for its strength. Served both at center and loops for long, trouble-proof service.



These strings are used by some of the best known target shots, flight experts, and big game hunters. No better strings are made.

In ordering, specify Double or Single Loop, weight of bow, and length of bow from nock to nock. If in doubt of exact bow length, order single loop style, which has a wide adjustment for length.

No. LLS Lay-Latex Bowstring . 50c each

HAND LAID BOW STRING

Made of finest Irish Flax. Cable laid reinforced ends. Pre-stretched and treated with our special formula of rubber latex or with bowyers wax, as you prefer. Unless otherwise specified, rubber latex treatment will be sent. Served unless specified. Scale length and weight bow. Single loop only.

No. HSL Single Loop String, to 50 lbs 75c each

Single Loop String, 50 to 90 lbs. \$1.00 each

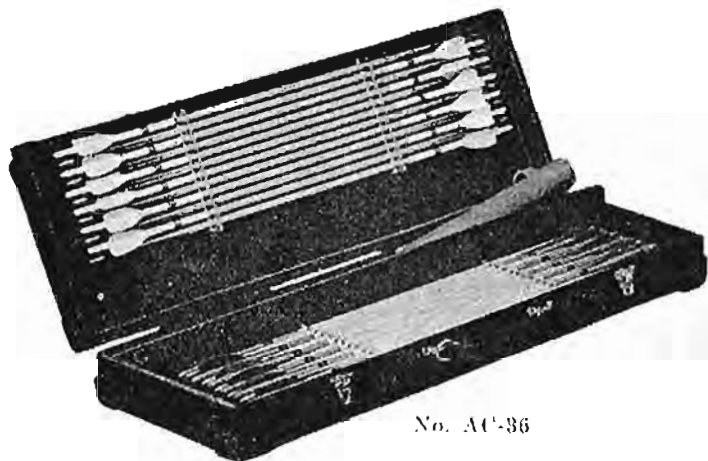
TAKE-DOWN BOW HANDLE



Closely matched brass tubing for take-down bows. Correct size for average bow. Outside tube 1 1/2 inches x 3/4 inch, 3 3/4 inches long. Inside tube 1 7/8 inches long. Snug fit.

No. TDM Brass Tubing.
Per pair \$1.00

The DELUXE ARROW CASE



No. AC-36

The DeLuxe Arrow Case is a very strong and durable, yet light, good looking arrow case. Made of light tough wood and covered with luggage fabric. Neatly trimmed. Is equipped with our rubber arrow holders. Holds three dozen arrows and has accessories compartment 2 3/4 in. x 3 in. x 20 in. Holds all length arrows up to 29 inches securely without rattle, shaking or sliding. Arrows are placed in rubber holders and can be taken out instantly and easily. The most convenient arrow case ever made. Over all size 1 in. x 9 in. x 30 in.

No. AC-36 DeLuxe Arrow Case \$12.00

(See Bow Cases on page 22)



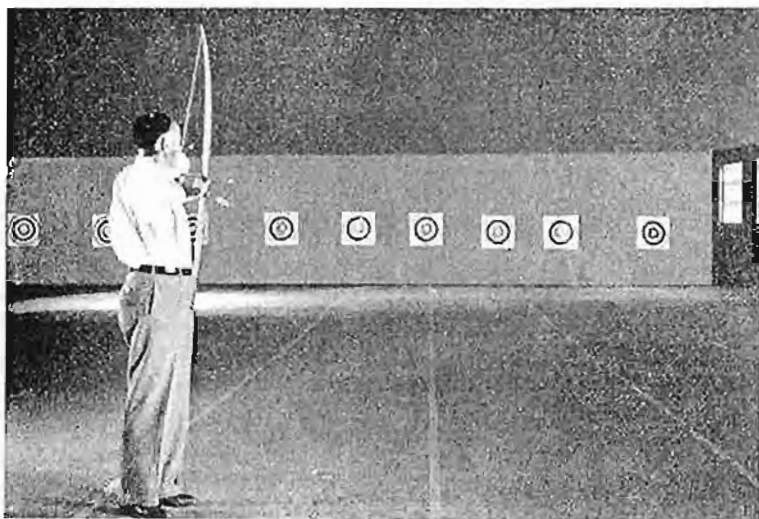
Archery ranges throughout the country are making money for their operators. In amusement parks archery concessions are getting a better play than ever before. Few people can resist the romance of the bow and the thrill that comes from a well-aimed shot.

Novelty targets are popular, although most ranges have standard faces on which their customers may keep score. Some give lessons in this fast growing sport. Outdoor ranges seem to be doing the best business where weather conditions permit, although they are successful in many indoor spots.

Experienced range operators know and use BEN PEARSON tackle. Due to correct design and perfect tillering of bows and careful selection of wood for arrows, along with fine fletching, their replacements are fewer and their customers more pleased with the equipment.

Anyone interested in this highly profitable amusement line can obtain information from any BEN PEARSON dealer. He is in a position to help in the choice of tackle to be used, construction of back-stops, targets, etc. If there is no BEN PEARSON dealer near you write direct and information will be furnished.

ATTENTION RANGE OPERATORS



INDOOR ARCHERY RANGE, MILWAUKEE, WIS.

Customers of archery ranges appreciate good equipment. BEN PEARSON Bows and Arrows are making new converts to archery throughout America. The expert workmanship and beautiful finish of BEN PEARSON tackle will bring new interest and business to your range.

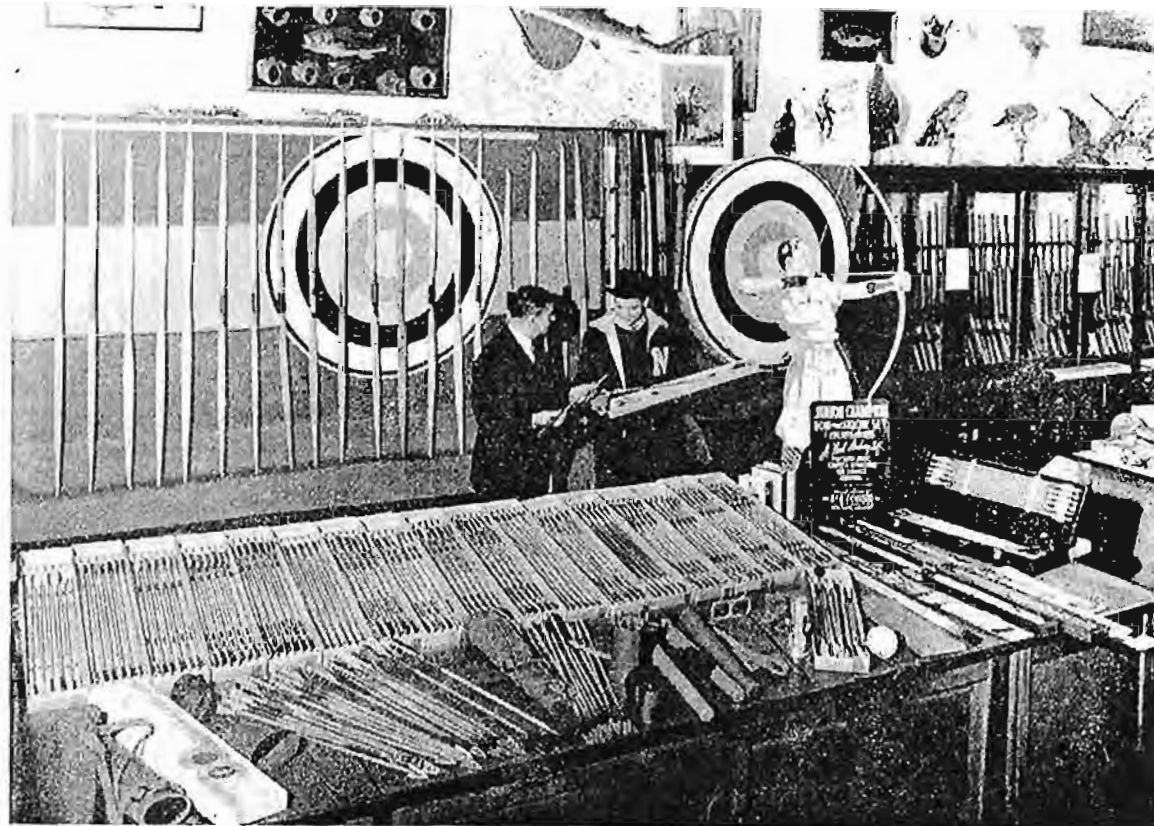


Tom Inler, Jr., of Phoenix, Arizona, with a Javelina killed with a BEN PEARSON broadhead. This was killed under special permit and is the first legally taken big game ever killed by a white man in Arizona with the bow and arrow.

Mr. Inler writes: "The arrow struck the shoulder blade, severed it, cut the jugular, went through the shoulder joint on the other side, and went fifty yards on down the hill. The hide is tough and has long bristles, making it very hard to shoot through with anything.

"I also shot a coyote through the chest cavity and didn't even slow down the arrow. I used a seventy-six pound bow and heavy birch arrows."

The archer on the back cover is W. J. Bowman of Madison, Wisconsin. The deer was shot in Sauk county which is one of the exclusive hunting territories for archers in Wisconsin.



ARCHERY COMES OF AGE

The oldest sport in the world is rapidly becoming one of the most popular. Archery in America has come a long ways since its first national tournament in 1879, at Chicago. At that time 89 archers gathered to determine the champion archers of the United States. At the present time, sectional tournaments with attendance of more than 300 are not uncommon. A national tournament has been held every year since that time, with the exception of 1917 and 1918, when no tournaments were held because of the war.

Archery record scores have mounted year after year. This can be attributed in a great measure to the scientific construction of tackle and improved shooting technique. Bows have been made shorter and faster. Arrows have been matched much more

closely. The importance of perfect fletching with new cements has been realized. All in all, if Robin Hood and his merry men could return to earth and visit any progressive sporting goods store he would find bows with the cast and feel that bowyers have ever striven for, and arrows of such precision and excellence that they will split the willow ward at 100 paces.

BEN PEARSON, INCORPORATED, is proud of the part it has played in the recent progress of this grand sport. For the first time, perfect tackle may be bought at a moderate price. Skilled workmen, precision machinery, production methods and large volume sales have enabled BEN PEARSON to offer the best and most complete line of archery tackle in the history of archery.