



STYLE
2500 / 2410 / 2390 / 2360

WEAVING
EXCELLENCE
WITH
INNOVATION



		SOLAR OPTICAL PROPERTIES				SHGC/G VALUE g-tot (glass & blind)	
Code	Color	TS	RS	AS	TV	SINGLE 1/4 CL	INSULATING 1 HA
STYLE 2500 - 1%							
P84	Brite White	15	72	13	14	0.26	0.20
P12	Oyster	15	68	17	12	0.26	0.21
P13	Oyster/Beige	10	60	30	9	0.31	0.23
P14	Oyster/Pearl Gray	7	50	43	6	0.35	0.25
Q20	Beige	7	50	43	6	0.36	0.25
Q21	Beige/Pearl Gray	5	42	53	5	0.39	0.27
V20	Pearl Gray	3	32	65	3	0.44	0.30
V21	Charcoal	1	4	95	1	0.59	0.37
V22	Charcoal/Gray	2	8	90	3	0.57	0.36
V24	Charcoal/Chestnut	1	6	93	1	0.59	0.37
V32	Charcoal/Alpaca	1	16	83	2	0.53	0.34
STYLE 2410 - 3%							
P84	Brite White	18	69	12	17	0.28	0.21
P12	Oyster	17	64	19	16	0.30	0.22
P13	Oyster/Beige	11	55	34	8	0.32	0.23
P14	Oyster/Pearl Gray	9	44	47	7	0.38	0.26
Q20	Beige	10	48	42	7	0.37	0.26
Q21	Beige/Pearl Gray	7	39	54	5	0.42	0.28
V20	Pearl Gray	6	31	63	5	0.44	0.30
V21	Charcoal	3	3	94	3	0.60	0.37
V22	Charcoal/Gray	3	9	88	3	0.57	0.36
V24	Charcoal/Chestnut	3	6	91	3	0.58	0.37
V32	Charcoal/Alpaca	4	20	76	5	0.51	0.33
STYLE 2390 - 5%							
P84	Brite White	22	67	11	20	0.30	0.22
P12	Oyster	21	61	18	20	0.30	0.23
P13	Oyster/Beige	17	54	29	12	0.35	0.24
P14	Oyster/Pearl Gray	14	45	41	10	0.39	0.27
Q20	Beige	14	47	39	10	0.40	0.27
Q21	Beige/Pearl Gray	11	38	51	9	0.43	0.29
V20	Pearl Gray	10	31	59	9	0.47	0.30
V21	Charcoal	4	4	92	5	0.60	0.37
V22	Charcoal/Gray	5	9	86	6	0.57	0.36
V24	Charcoal/Chestnut	6	6	88	6	0.59	0.37
V32	Charcoal/Alpaca	7	18	75	9	0.53	0.34
STYLE 2360 - 10%							
P84	Brite White	27	62	11	25	0.33	0.24
P12	Oyster	27	57	16	26	0.35	0.24
P13	Oyster/Beige	24	51	25	19	0.37	0.26
P14	Oyster/Pearl Gray	20	45	35	16	0.41	0.27
Q20	Beige	19	44	37	16	0.43	0.28
Q21	Beige/Pearl Gray	17	39	44	15	0.44	0.30
V20	Pearl Gray	16	30	54	14	0.49	0.31
V21	Charcoal	10	4	86	11	0.62	0.37
V22	Charcoal/Gray	12	8	80	14	0.60	0.37
V24	Charcoal/Chestnut	11	5	84	12	0.61	0.37
V32	Charcoal/Alpaca	12	15	73	16	0.57	0.35

PROTECTION THAT LIVES ON
MICROBAN[®]
 Microban[®] antimicrobial protection inhibits the growth of stain-causing bacteria, mold and mildew on the shade.



PRODUCT CERTIFIED FOR
 LOW CHEMICAL EMISSIONS
 UL.COM/GG
 UL 2818



MIF Seal of Approval



TS = Solar Transmittance
 RS = Solar Reflectance
 AS = Solar Absorptance
 TV = Visual Transmittance

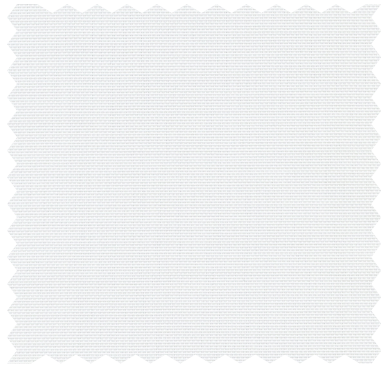
SHGC = Solar Heat Gain Coefficient

1/4 CL = 1/4" Clear Glass
 1 HA = 1" Heat Absorbing Glass

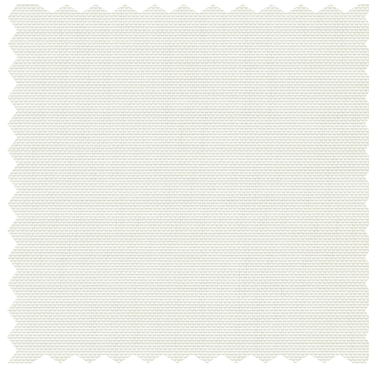
Fabrics Installed Internally
 Zero-Degree Profile Angle

For additional performance values,
 test references and technical
 definitions visit us at phifer.com.

P84 **Brite White**



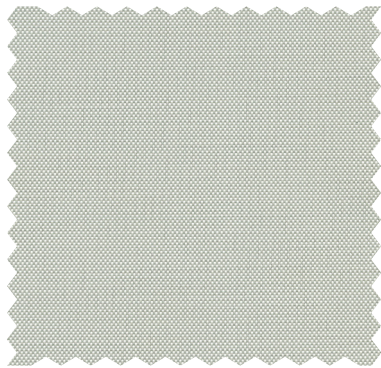
P12 **Oyster**



P13 **Oyster/Beige**



P14 **Oyster/Pearl Gray**



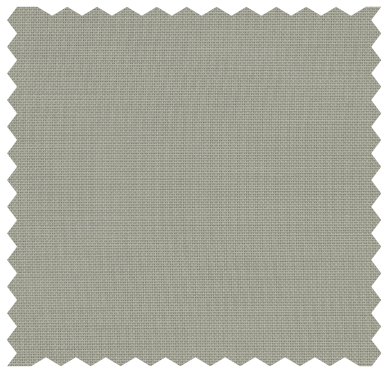
Q20 **Beige**



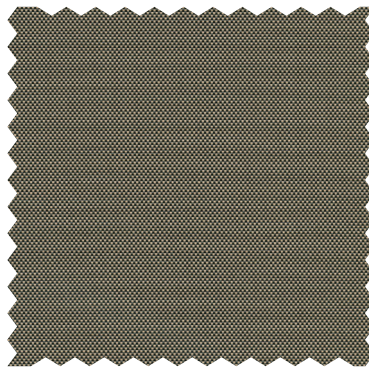
Q21 **Beige/Pearl Gray**



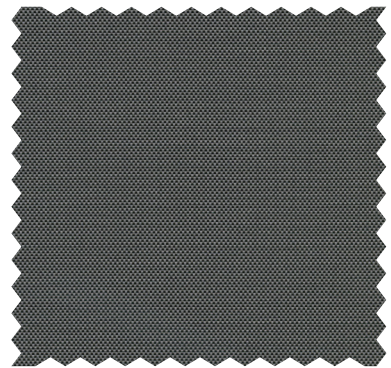
V20 **Pearl Gray**



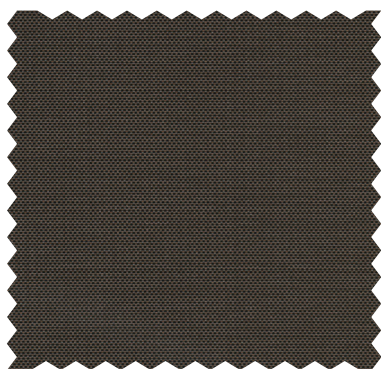
V32 **Charcoal/Alpaca**



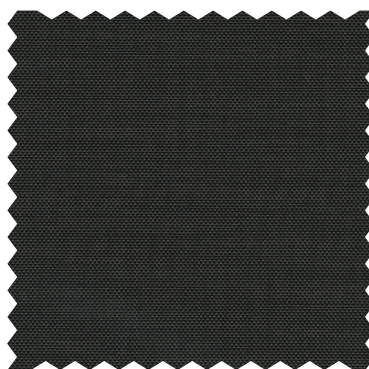
V22 **Charcoal/Gray**



V24 **Charcoal/Chestnut**



V21 **Charcoal**



STYLE 2500 / 2410 / 2390 / 2360 SPECIFICATIONS

Manufactured with ease of fabrication in mind, Styles 2500, 2410, 2390 and 2360 are full basketweaves designed expressly for those applications which require a more opaque and nondirectional fabric. Styles 2500, 2410, 2390 and 2360 can also be used in exterior roller shades.

FIRE CLASSIFICATION	NFPA 701 TM#1 (small scale)	BS 5867 Part 2 Type B Performance
	NFPA 701 TM#2 (large scale)	CAN/ULC-S 109 (large and small scale)
	NFPA 101 (Class A Rating)	CAN/CGSB2-4.162-M80
	California U.S. Title 19 (small scale)	IBC Section 803.1.1 (Class A Rating)

Fire classifications are subject to change. Please go to phifer.com for the most current information.

BACTERIA AND FUNGAL RESISTANCE	ASTM E 2180	ASTM G21	ASTM G22	AATCC30 Part 3	ASTM D 3273
	GREENGUARD Mold and Bacteria Standard ASTM 6329				
	Includes Microban antimicrobial additives				
ENVIRONMENTAL CERTIFICATION	GREENGUARD	GREENGUARD Gold			
	Certified to these standards for low chemical emissions into indoor air during product usage				

SAFE USE	ANSI/WCMA A 100.1-2007 for lead content	US Consumer Product Safety Commission Section 101
	RoHS/Directive 2002/95/EC	REACH (EC 1907/2006) compliant

WARRANTY	10-year interior	5-year exterior
-----------------	------------------	-----------------

ACOUSTICAL PERFORMANCE	NRC (Noise Reduction Coefficient) and SAA (Sound Absorption Average) tested in accordance with ASTM C423-09a		
-------------------------------	--	--	--

UV PROTECTION	Seal of Approval by the Melanoma International Foundation (MIF) for effectiveness in preventing sun damage to the skin or eyes		
----------------------	--	--	--

TRACKLESS TrackLess Technology minimizes the fiberglass yarns' inherent tendencies to track when being rolled up in a shade. With TrackLess Technology these same fabrics now track less, roll up straighter and reduce shade fabrication time.

STYLE	2500	2410	2390	2360
WIDTHS	63", 98" and 126" 160 cm, 248.9 cm and 320 cm	63", 98" and 126" 160 cm, 248.9 cm and 320 cm	63", 98" and 126" 160 cm, 248.9 cm and 320 cm	63", 98" and 126" 160 cm, 248.9 cm and 320 cm
ROLL LENGTH	30 Linear Yards 27.4 Linear Meters	30 Linear Yards 27.4 Linear Meters	30 Linear Yards 27.4 Linear Meters	30 Linear Yards 27.4 Linear Meters
COMPOSITION	37% Fiberglass 63% Vinyl on Fiberglass	36% Fiberglass 64% Vinyl on Fiberglass	35% Fiberglass 65% Vinyl on Fiberglass	35% Fiberglass 65% Vinyl on Fiberglass
MESH WEIGHT	16.2 oz/yd ² 549 g/m ²	14.1 oz/yd ² 478 g/m ²	11.8 oz/yd ² 400 g/m ²	10.4 oz/yd ² 353 g/m ²
FABRIC THICKNESS	0.024 in 0.61 mm	0.020 in 0.51 mm	0.017 in 0.43 mm	0.019 in 0.48 mm
OPENNESS FACTOR	Approximately 1%	Approximately 3%	Approximately 5%	Approximately 10%
UV BLOCKAGE	Approximately 99%	Approximately 97%	Approximately 95%	Approximately 90%
ACOUSTICAL VALUE	NRC .55 / SAA .54	NRC .20 / SAA .21	NRC .10 / SAA .12	NRC .05 / SAA .06

PHIFER
INCORPORATED

P. O. Box 1700 • Tuscaloosa, Alabama 35403-1700 USA
Phone: 205.345.2120 • FAX: 205.391.0799
Toll Free USA/Canada: 1.800.221.5497
phifer.com • ISO Registered



© SheerWeave is a registered trademark of PHIFER INCORPORATED.
© MICROBAN is a registered trademark of Microban Products Company.
™ UL, the UL logos and the UL mark are trademarks of UL LLC.
© PHIFER INCORPORATED V22 082422 3033832