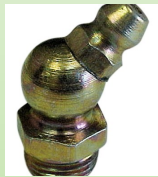


Specialists in Lubrication Products since 1912



**See our complete Line
of DEF equipment
Go to page 41 & 42**



**NEW
Lower Priced
Cart Sets**



2015 Catalog



Part Number Cross Reference to Catalog Page

<u>Part #</u>	<u>Pg.</u>	<u>Part #</u>	<u>Pg.</u>	<u>Part #</u>	<u>Pg.</u>	<u>Part #</u>	<u>Pg.</u>	<u>Part #</u>	<u>Pg.</u>	<u>Part #</u>	<u>Pg.</u>	<u>Part #</u>	<u>Pg.</u>	<u>Part #</u>	<u>Pg.</u>	<u>Part #</u>	<u>Pg.</u>
01331	24	07380	40	13006	32	15209	14	18050 025	25	18787 201	8	19500 118	17	19703 200	27	20905 050	25
01335	24	07382	40	13007	32	15213	14	18050 038	25	19000 444	23	19500 128	17	19703 250	27	20907 050	25
01338	24	07385	40	13008	32	15226	14	18050 625	25	19000 644	23	19500 248	16	19703 260	27	23110	31
01339	24	07394	40	13009	32	15226 200	14	18050 635	25	19001 025	23	19500 258	17	19703 536	28	23112	31
01340	24	07395	40	13014	32	15262	14	18058 035	25	19001 544	23	19500 275	15	19703 746	27	23252	31
01341	24	07471	40	13016	32	15262 541	14	18058 050	25	19001 564	23	19500 375	18	19703 760	27	23513	31
01342	24	07472	40	13017	32	15638	14	18065	10	19060	35	19505 114	16	19704	27	23516	31
01343	24	07478	40	13018	32	16094	14	18071	12	19061	35	19505 214	16	19717 100	29	23615	31
01344	24	10589	40	13019	32	16095	14	18073	12	19063	35	19514 211	16	19717 200	29	24124	37
01345	24	12009	13	13021	32	16096	14	18075	12	19066 052	35	19514 311	16	19718	29	24128	37
02350	39	12130	13	13055	33	16100	14	18075 101	12	19067 052	35	19522	35	19718 100	29	27016	38
02351	39	12228	11	13055 337	33	16102	14	18075 102	12	19070	35	19526	29	19718 746	29	27016 100	38
02352	39	12250	11	13056	33	17001	22	18081	10	19096	37	19527	29	19718 760	29	27017	38
02353	39	12252	11	13056 337	33	17001 541	22	18082	10	19135 201	19	19529	29	19723	26	27017 050	38
02354	39	12253	11	13057	33	17007	22	18083	10	19185 201	19	19548	21	19723 746	26	27017 100	38
02356	39	12631	13	13062	33	17008	22	18102	10	19195 201	20	19563	29	19723 760	26	27018	38
02358	39	12641	13	15002 541	14	17009 300	22	18103	10	19268	23	19565	29	19724	26	27018 050	38
02360	39	12642	13	15002 542	14	17010	22	18105	10	19305 201	19	19567 114	16	19724 200	26	27018 100	38
02362	39	12643	13	15003 100	14	17011	22	18154	10	19305 214	20	19569	29	19724 300	26	27070	37
02364	39	12654	13	15003 541	14	17012	30	18182	10	19314 201	20	19570	29	19724 746	26	27074	38
02365	39	12655	13	15004 100	14	17013	22	18448	9	19314 301	20	19575	29	19724 760	26	27822	34
02366	39	12655 740	13	15007	14	17014	30	18448 016	9	19337 201	19	19581	29	19728	28	30009	41
02367	39	12656	13	15009	14	17018	34	18449	9	19344 201	20	19582	29	19740	29	30018	41
02372	39	12656 740	13	15026	14	17024	34	18449 016	9	19348 201	20	19600 010	15	19741	29	30060	35
02562	39	12657	13	15026 200	14	17025	34	18500	3	19367 201	19	19600 016	15	19745	28	30061	35
02568	39	12658	13	15026 541	14	17029 055	34	18513	3	19375 201	18	19600 055	15	19746	29	30062	41
02646	39	12659	13	15026 542	14	17184	6	18514	3	19387 201	19	19600 275	15	19747	29	30062 056	41
02672	39	12664 100	13	15062	14	17191	6	18524	5	19419	24	19616	29	19748	29	30062 156	41
03337	33	12664 148	13	15062 542	14	17192	6	18563	5	19419 275	24	19617	29	19749	29	30075	41
05112	30	12664 360	13	15062 543	14	17195	6	18563 211	5	19419 475	24	19650 035	25	19760	29	30255	41
05114	30	12664 361	13	15102 100	14	17196	6	18585	4	19420	24	19650 099	25	19778 535	37	30450 013	42
05115	30	12665	13	15102 541	14	17200	6	18585 010	4	19420 350	24	19650 625	25	19800 103	34	30450 014	42
05115 090	30	12665 590	13	15102 542	14	17211	22	18587	4	19429 335	24	19650 635	25	19801	37	30450 030	42
05122	30	12665 741	13	15102 543	14	17275 060	6	18600	3	19429 460	24	19650 650	25	19802	37	30450 032	42
05134	30	12666	13	15107	14	17350 060	6	18613	3	19429 468	24	19650 825	25	20215	6	30450 033	42
05135	30	12666 741	13	15109	14	17401 060	6	18663 211	5	19430 165	24	19650 835	25	20216	6	30450 051	42
05135 090	30	12676	11	15113	14	17694	12	18685	4	19430 250	24	19665 050	25	20218	6	30450 052	42
05217	30	12676 655	11	15126	14	17695	12	18710 201	7	19448	21	19665 099	25	20219	6	30450 053	42
05218	30	12679	11	15126 542	14	17918	12	18713 201	7	19448 016	21	19665 8275	25	20226	6	30451	41
05227	30	12679 655	11	15126 543	14	17919 010	12	18716 201	7	19449	21	19665 8305	25	20240	30	30702	41
05228	30	12699	13	15127	14	17919 110	12	18723 201	8	19449 016	21	19695	28	20321 200	25	30703	41
06865	30	12745	13	15127 541	14	18023	10	18767 201	8	19499	22	19695 746	28	20903 650	25	55837 543	14
06866	30	12746	13	15162	14	18025	10	18767 300	8	19500 010	15	19695 760	28	20903 850	25	55838	14
07060 100	40	12902	11	15162 541	14	18028	10	18767 311	8	19500 016	15	19701	29	20904 650	25		
07355	40	12903	11	15207	14	18035	10	18785 201	8	19500 055	15	19703	27	20905 025	25		

Index

Description	Page Number
Grease Equipment	
TRUE BLUE 45:1 and 60:1 Grease Pumps	3
TRUE BLUE Lubricator Sets for 35 lb. Pails, 120 lb. and 400 lb. Drums	4, 5
Dust Covers, Follower Plates, Filter / Regulator / Lubricators	6
VALUE Grease Pumps 50:1	7
VALUE Grease Lubricator Sets	8
NEW VALUE Grease Lubricator Carts	9
Grease Control Valves, Swivels, High Pressure Hoses	10
Grease Guns, Suction Guns	11
Electric and Air Grease Guns, Bucket Lubricators	12
Hydraulic Couplers, Flexible Hoses, Grease Fittings	13, 14
Air Oil Pumps	
TRUE BLUE 5:1 and 9:1 Oil Pumps	15
TRUE BLUE Oil Dispenser Sets for 16 Gallon and 55 Gallon Drums, Wall Mount Sets	16, 17, 18
VALUE 1:1, 5:1 Oil Pumps, Sets for 16 Gallon and 55 Gallon Drums	19, 20
NEW VALUE Oil Dispensers Sets	21
Carts, Dollies, Caster Base, Drum Cradle, Hose Bracket	22
Bulk Oil Tank Packages, Complete Sets, Bench and Oval Tanks, Float Gauges	23, 24
Hose Reels for Grease, Oil, Air and Water	25
Flow Meters for Oil. Mechanical, Digital Meters, Control Valves	26, 27, 28, 29
Pump Oilers	30
Electric Pumps	31
Drum Pumps, Barrel Pumps, Gear Oil Pumps, FLUID DISPENSERS	32, 33, 34
Diaphragm Pumps	35, 36
Waste Oil Equipment, Oil Drains, Drain Pans, Rolling oil drains	37, 38
Funnels	39
Oil Measures, Jugs, Graphite Powder	40
Pumps for DEF, Urea, Control Valves, Flow Meter	41, 42

If you can't find it, call us at (847) 931-1020

LUBEQ's TRUE BLUE Quality



Heavy Duty Pneumatic Pumps that you can rely on over and over again.

The quality of our Pneumatic Pumps have been tested and proven, having been on the market for over a decade! Their unique design utilizes fewer moving parts, making the control module less sensitive. These pumps are recommended for high-pressure dispensing or lubrication, for direct mounting on containers or in-line pipe installations. Delivery performance may vary depending on the consistency of the lubricant as well as its temperature.

Technical Description

These pumps are manufactured from brass, zinc, aluminum, and carbon steel. The seals are made from polyurethane, Viton, and NBR. The pumps are quiet, and perform without vibrations. The air motor housing is cam precision machined. All seals and O rings are precision fitted. The piston is made from polished, heat treated steel. For trouble-free operation we recommend the installation of our Filter/Regulator/Lubricator.

10 year warranty



Model Number	45:1 Grease Pump Most popular Model	60:1 Grease Pump For longer distance
35 lb. Pails	18514	N/A
120 lb. Drums	18513	18613
400 lb. Drums	18500	18600

Specifications	NLGI#2	NLGI#3
Recommended for grease up to:		
Ratio:	45:1	60:1
Diameter of Air Motor	4.25"	4.25"
Stroke of Air Motor	2-3/4" dbl act	2-3/4" dbl act
Maximum Air Pressure	130 PSI	130 PSI
Operating Air Pressure	90 PSI	90 PSI
Minimum Air Pressure	45 PSI	45 PSI
Maximum Material Pressure	5400 PSI	7200 PSI
Air Inlet NPT	3/8" Female	3/8" Female
Material Outlet NPT	1/4" Female	1/4" Female
Maximum Sound Level at a Distance of 3 ft.	80dB	80dB
Air Consumption	14 CFM	14 CFM
Delivery Performance min at an operating pressure of:	4050 PSI	5400 PSI
Free Flow	72 oz.	62 oz.
At a Distance of 33 ft.	40 oz.	35 oz.
At a Distance of 65 ft.	36 oz.	35 oz.
At a Distance of 100 ft.	30 oz.	35 oz.
At a Distance of 150 ft.	25 oz.	35 oz.
At a Distance of 200 ft.	N/A	30 oz.

TRUE BLUE Premium Grease Lubricator Sets

Our True Blue Grease Lubricator Sets feature our Premium Pneumatic Pumps – giving you rugged durability, top-notch performance, with a quality Reelcraft hose reel, an exceptional value, all in one, convenient package!



Lubricator Sets for 400 Lb. Drums With 45:1 and 60:1 Pumps

Sets Include:	Standard Set <i>Most Popular</i>	Standard Set	Set with cart	Set w/ Cart & 30ft. Hose Reel
	18585	18685	18585 010	18587
Pump	45:1 Pump	60:1 pump	45:1 Pump	45:1 Pump
Dust Cover	17192	17192	17192	17192
Follower Plate	17401 060	17401 060	17401 060	17401 060
Better quality Control Valve	18154	18154	18154	18154
Z-Swivel	18082	18082	18082	18082
10 ft. Grease Hose or Hose Reel w/ 30 ft. 1/4" Hose	18023	18023	18023	30 ft. Reel 18058 030 <i>Optional 50 ft. Reel 18058 050</i>
Filter / Regulator/ Lubricator	20216	20216	20216	20216
Carts	N/A	N/A	Cross bar cart 17010	Utility cart for hose reel 17009 300



18585



18587

Drums shown are not included

TRUE BLUE Premium Grease Lubricator

Our True Blue Grease Lubricator Sets feature our Premium Pneumatic Pumps – giving you rugged durability, top-notch performance, and exceptional value, all in one convenient package!

10 year warranty



Lubricator Sets for 35 Lb. Pails, 120 Lb. Drums

	Stationary	Set with Caster Base	Set with Handle
Sets Include:	18563 (45:1)	18563 211 (45:1) 18663 211 (60:1)	18524 (45:1)
Dust Cover	17195	17195	17196
Follower Plate	17350 060	17350 060	17275 060
Control Valve Heavy duty	18154	18154	18154
Z-Swivel	18082	18082	18082
Caster Base, Hand Truck or Cart	N/A	Caster Base 17211	Pump has handle
Grease Hose 10 ft. 1/4"	18023	18023	18023
Filter / Regulator/ Lubricator	20216	20216	20216



18563 211



17001 541
Optional Dolly
for 35 lb. Pail



18524

Drum and pail shown are not included

Oil and Grease Dust Covers and Follower Plates

Dust Covers have all metal construction with three wing nuts to ensure a secure fit.

Part Number	I.D. for Suction Pipe	O.D. Overall
17184 for 120 lb. / 16 gallon drum	2" bung	15-1/4"
17191 for 35 lb. / 5 to 6-1/2 gallon pails	2" bung	12-1/2"
17192 for pump 18500—400 lb. drums	3" pump mount	24-1/2"
17195 for pump 18513—120 lb. drums	3" pump mount	15-1/4"
17196 for pump 18514—35 lb. pail	3" pump mount	12-1/2"
17200 for 400 lb. drums	2" bung	24-1/2"

Follower Plates Our follower plates have a rubber lip that allows them to follow contours of grease Containers.

Part Number	I.D. for Suction Pipe	O.D. Overall	Rubber Rim
17275 060 for 35 lb. / 5 to 6-1/2 gallon pails	Expandable from 7/8" - 3-1/2"	11.1/2"	7/8"
17350 060 for 120 lb. / 16 gallon drum	Expandable from 7/8" - 3-1/2"	14-3/8"	5/8"
17401 060 for 400 lb. drums	Expandable from 7/8" - 3-1/2"	23-1/8"	5/8"

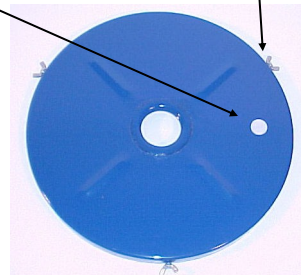
Rubber rim reduces grease loss on side of container and to compact grease for better pump performance.

Center sleeve is rubber and will expand to fit various size pipes.

Handle to remove follower plate from

Dust covers come with wing nuts to secure cover on drum. No 17184, 17191, 17200

Covers come with opening to store grease or oil valve.



Filter/ Regulator/Lubricators

We recommend installation of our Filter/Regulator/Lubricators with all LUBEQ air-operated equipment. Our Filter/Regulator/Lubricator parts are made from zinc die-castings and are precision machined. These essential items have sturdy collection and oil reservoirs, and will help extend the service life of your equipment and protect your investment.

Technical Specifications:

Operating Pressure Range: Minimum: 7 PSI to 120 PSI Maximum: 150 PSI Filter: 5 Microns
Maximum CFM: 95 Operating Temperature Range: 32° F to 140° F

Part Number	1/4"	3/8"	1/2"
Lubricator	20226	N/A	N/A
Filter/Regulator	20215	N/A	N/A
Filter/Regulator/ Lubricator	20216	20218	20219
Filter	N/A	N/A	N/A



Value Pneumatic Grease Pumps 50:1 Ratio

The quality of this 50:1 Pneumatic Grease Pump has been tested and proven, having been on the market for over a decade! Grease lubricator sets using this pump are used by thousands of customers including the US Government. Their unique design utilizes fewer moving parts, making the control module less sensitive. These pumps are recommended for high-pressure lubrication, for direct mounting on containers or in-line pipe installations.

Technical Description

These pumps are manufactured from brass, aluminum, and carbon steel. The seals are made from polyurethane, Viton, and NBR. The pumps are quiet, and perform without vibrations. The air motor housing is cam precision machined from aluminum bar stock. Since there are no zinc die castings used, the pump is more resistant to water. All seals and O rings are precision fitted. The piston is made from polished, heat treated steel. Each pump is tested prior to shipment for performance and air leaks. **Warranty: 5 Years. See warranty terms and conditions**

Pump Ratio 50:1

- 18710 201 for 35 lb. pail**
- 18713 201 for 120 lb. drum**
- 18716 201 for 400 lb. drum**

For a trouble-free operation and clean air supply we recommend the installation of our Filter/Regulator/Lubricator (20216)



Specifications	18710 201	18713 201	18716 201
Drum/Container Size	35 lb. Pail	120 lb. Drum	400 lb. Drum
Ratio	50:1	50:1	50:1
Diameter of Air Motor	3"	3"	3"
Suction Tube Length & diameter for follower pl.	18" 1.26"	30" 1.26"	38" 1.26"
Maximum Air Pressure	120 PSI	120 PSI	120 PSI
Operating Air Pressure	90 PSI	90 PSI	90 PSI
Minimum Air Pressure	60 PSI	60 PSI	60 PSI
Maximum Material Pressure	6000 PSI	6000 PSI	6000 PSI
Air Inlet - NPT	1/4" Female	1/4" Female	1/4" Female
Material Outlet - NPT	3/8" Female	3/8" Female	3/8" Female
Maximum Sound Level at a Distance of 3 feet	80dB	80dB	80dB
Air Consumption (Approximate)	9 CFM	9 CFM	9 CFM
Delivery Performance per Minute at an Operating Pressure of:	4500 PSI	4500 PSI	4500 PSI
Free Flow	24 oz.	24 oz.	24 oz.
At a Distance of 33 ft.	14 oz.	14 oz.	14 oz.
At a Distance of 65 ft.	12 oz.	12 oz.	12 oz.
At a Distance of 100 ft.	11 oz.	11 oz.	11 oz.
At a Distance of 150 ft.	10 oz.	10 oz.	10 oz.

Value Grease Lubricator Sets

Included in each of these value-priced sets are: Pneumatic pump, dust cover, follower plate, control valve set including Z-Swivel, 10 ft. 1/4" high pressure grease hose, filter/lubricator/regulator and handle or dolly. Sets are packaged in a box and require assembly. Operating instructions, troubleshooting and assembly instructions are included.



18767 201



18767 300



18767 311



18723 201

This set contains Drum/Pail	18723 201 (35 lb.)	18767 300 (120 lb.)	18767 311 (120 lb.)	18785 201 (400 lb.)	18787 201 (400 lb.)
Grease Pump	18710 201	18713 201	18713 201	18716 201	18716 201
Dust Cover	17191	17184	17184	17200	17200
Follower Plate	17275 060	17350 060	17350 060	17401 060	17401 060
Control Valve Set	18103	18103	18103	18103	18103
Grease Hose 10 ft. 1/4"	18023	18023	18023	18023	25 ft. 3/8" 18050 025
Filter/Regulator/ Lubricator	20216	20216	20216	20216	20216
Handle	17013	N/A	N/A	N/A	N/A
Dolly / Caster Base Hand Truck	N/A Add Optional Dolly 17001 541	17001 Dolly	17211 Caster Base Or 17008 for 18767 201	N/A Add Optional Dolly 17001	17009 300



18785 201



17001 541
Optional Dolly for
35 lb. pail



18787 201

Drums and pail shown are not included!

VALUE Grease Lubricator Carts

These sets use our new lower priced hand truck 17007. A cart designed to transport heavy drums such as a 55 gallon oil drum. This cart is also capable of holding a 16 gallon drum. Heavy gauge steel construction with two 8" wheels and one 6" lockable swivel caster.

To mount a hose reel, the cart comes with a steel platform. We secure the drums with a steel chain. Models with a storage rack come with a cast aluminum rack bolted to the cart handles. Drum platform comes with a removable drum support for smaller diameter 16 gallon / 120 lb. drums. The cart is designed to easily transport filled drums on a level ground.

Grease Sets for 120 lb. / 400 lb. drums

Sets come with a **LUBEQ VALUE Line 50:1 grease pump** with a 5 year warranty, Filter / Regulator/ Lubricator, grease control valve with Z-swivel, and rigid spout with a hydraulic coupler. Dust cover and follower plate. 90 PSI compressor setting is a working pressure of 4500 PSI. 120 PSI maximum pressure. All accessories such as the hoses, control valve and coupler, hose reel are rated for this pressure.

Sets with aluminum hose rack and 30 ft. 1/4" high pressure hose

Sets come with a heavy cast aluminum hose storage rack designed to hold up to 50 ft. of hose mounted on hand truck

Part Number

18448 for 400 lb. drums

18448 016 for 120 lb. drums



Sets with a 25 ft. Reelcraft hose reel with 3/8" high pressure hose

Part Number

18449 for 400 lb. drums

18449 016 for 120 lb. drums



All sets come with a Booster control valve with Z-swivel, rigid spout and hydraulic coupler.

Grease Control Valves, High Pressure Grease Hoses

18154 TRUE BLUE Heavy-Duty Control Valve only

Our best control valve!

With precision machined steel parts, this gun is built to hold up in the most demanding of environments. Recommended for high pressure grease lubrication with pneumatic grease pumps.

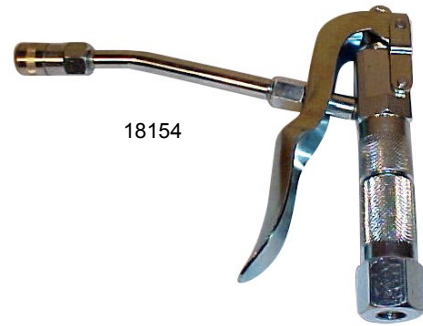
Pressure rating up to 8000 PSI.

Comes with rigid spout and hydraulic coupler.

Specs:

Grease hose connection 1/4" female

Spout connection 1/8" female



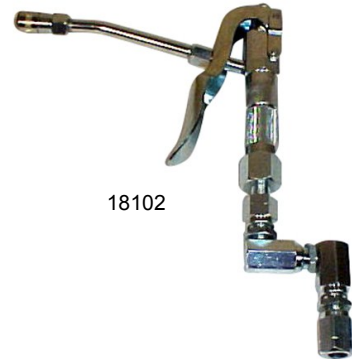
18154

18102 TRUE BLUE Heavy-Duty Control Valve Set.

This is our best control Valve set!

Includes: 18154 Control valve and 18082 Z-Swivel.

A set recommended for professional grease lubrication.



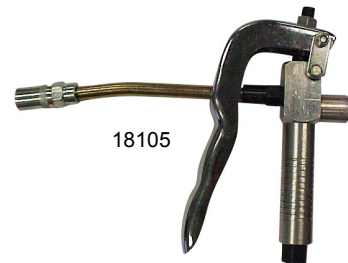
18102

18105 Grease Control Valve with Booster Feature

Built in booster delivers up to 10000 PSI. Use to break loose clogged fittings. With valve attached to grease fitting pressure delivered by pneumatic pump can be increased to max. pressure by pulling trigger. Steel construction with aluminum barrel. Comes with rigid spout and hydraulic coupler.

Specs: Grease hose connection 1/4" female

Spout connection 1/8" female



18105

18103 Set Grease Control Valve with Booster and Z-Swivel

This set includes control Valve 18105 and Z-Swivel 18082.



18103

18081 Straight Swivel

18082 Z - Swivel

The most popular swivel. Allows the unrestricted movement of the grease hose.

Swivels for high pressure grease control valves.

Steel construction, precision machined with slide bearings in swivel connections. The LUBEQ design allows the swiveling even under pressure. We ship parts with Teflon taped threads to ensure leak proof connections.

All swivels come with a 1/4" Female hose connection and 1/4" Male connection for the control valves.

Pressure rating: maximum 8000 PSI.

18083 L- Swivel

18182 HEAVY DUTY Z-Swivel USE with 18154

1/4" connections

Grease Hoses, High Pressure

1/4" I.D. High-pressure hose, NPT Pressure rating: 5000 PSI. Hose specs: S.A.E. 100 R2T. Two wire braided hose. For grease only.

18023 10 ft. length

18025 20 ft. length

18028 30 ft. length

18035 50 ft. length

18065 Hose stop for 1/4" hose



18081



18082



18083

Grease Guns & Suction Guns

12228 Midget Grease Gun 3 oz. capacity.
Set comes with one 3 oz. lithium grease cartridge



12250



12250 Pistol Grip Gun 14 oz. with Rigid Spout

A grease gun for easy one-handed operation. Gun has a zinc die cast head assembly and pistol grip parts are zinc plated. Heavy gauge steel barrel. Plunger is shaped for 3 way loading, and the gun has the added safety feature of a posi-lock latch to prevent the accidental release of the rod. Develops a maximum pressure of 3000 PSI; comes with a rigid spout and 4 jaw hydraulic coupler. Packaged in display box.



12253 Pistol Grip Gun (14 oz.) with Flexible Hose.
Model 12250 with additional 12" flex hose 12656

12252 HEAVY DUTY Pistol Grip Gun 14 oz. Gun develops max. 7500 psi. Delivery performance 33 strokes for 1 oz. grease.

Set includes 18" flexible rubber hose and rigid spout. Rugged die cast aluminum head. Enclosed piston assembly to avoid grease leakage on piston due to back pressure. Jam proof handle. 3-way loading, air vent valve and filler valve for bulk loading. Variable stroke feature. Short stroke for high pressure, long stroke for volume delivery. Steel barrel with precision machined threads, painted with grip resistant enamel coat. Large T-handle to pull plunger rod for grease filling. Large comfortable grip to get high pressure.



12252

12676 Grease Gun with Variable Stroke (14 oz.)

With a zinc die cast head assembly. Zinc plated steel barrel with knurling for a better grip. The longer lever combined with a large diameter piston delivers approximately 6 oz. of grease per 100 strokes and is capable of creating up to 10,000 maximum PSI (6,000 working PSI). Comes with filler nipple and air bleeder valve. Gun comes with a 5 1/2" rigid spout and 4 jaw hydraulic coupler. Plunger is shaped for 3 way loading, posi-lock on plunger rod for easy grease loading. Packaged in display box.



12676

12676 655 Variable Stroke Grease Gun with 12" poly whip hose. See 12676 for details

12679 Lever Grease Gun for 14oz. cartridge, 16 oz. bulk

Variable stroke grease gun with heavy duty cast iron head assembly. Rigid spout and 4 jaw hydraulic coupler. Longer Lever with vinyl grip for high pressure grease discharge. Variable stroke feature for opening frozen grease fittings. Long stroke for volume grease. Short stroke for high pressure lubrication. Rugged construction with cast iron head. Heavy gauge steel barrel with knurling for a better grip. Large T-handle on plunger rod to easily pull back plunger for loading grease. Posi-lock. Extra strong plunger rod holds in any position with thumb release latch. Gun develops max. 10000 psi. Delivery rate for 1 oz. 19 strokes.



12679

12679 655 Lever Gun for 14oz cartridge, 16 oz. bulk.
See description for 12 679. With 12" rubber whip hose

12902 Suction Gun, 1 Pint.

This gun is an economical way to transfer small amounts of fluids from containers or machinery. It has a steel body, and is painted black with metal end caps and a T-handle. Gun includes 12" flexible plastic suction tube and is packaged in a box.

12902



12903 Suction Gun, 1 Pint with dual suction hoses, 44" long.

12903



Grease Guns, Electric Grease Gun

18075 Powerful 18 Volt Model

This cordless electric grease gun is manufactured from heavy duty materials for durability, fit and finish. It provides A continuous flow of grease at up to 6000 PSI. A fully charged battery will dispense approximately 6 cartridges of grease. It features 3 way loading for 14 oz. cartridges, bulk and suction filling.

Includes 110 Volt battery charger, two 18 Volt NiCad Batteries that recharge in just one hour, and a carrying case. Set comes with 40" poly hose and hydraulic coupler.

- 18075 101 Replacement Battery
- 18075 102 Replacement Charger



Air Operated Grease Guns

Use these guns for specialty greases required for specific bearings. Ideal for fleet and agricultural use. Balanced design to reduce operator fatigue.

Specifications:

Guns have a pressure ratio of 50:1 Use standard 14.5 oz. grease cartridges or filler pump.

Air Operating Pressure: Minimum of 30 PSI, with a maximum pressure of 120 PSI.

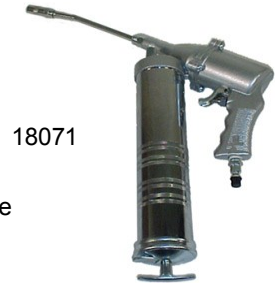
Recommended air pressure: 90 PSI.

Operating pressure: 4500 PSI (1500 PSI at an input pressure of 30 PSI).

Delivery: approximately 2 oz. per 100 shots.

Important: a Filter/Regulator/Lubricator (20216) must be installed in the air supply line to ensure trouble free operation.

18071 Grease gun with rigid spout and hydraulic coupler.



18071

18073 Continuous flow grease gun

This gun is designed to operate just like the larger pneumatic pumps. When the trigger is depressed, the grease will flow continuously until the trigger is released. Gun comes with a rigid spout, hydraulic coupler, and has a delivery rate of approximately 8.2 oz. per minute.



17918

Grease Filler Pump, Grease Lubricators

17918 Grease Gun Filler Pump.

For bulk filling of grease guns. With this pump the cost for individual grease Cartridges can be offset by using lower priced bulk grease in pails. In general grease guns offer a 3-way loading feature. Pump fits on open standard 35 lb. pails. Set includes metal dust cover, follower plate and filler nipple



17919 010 Bearing Packer with grease fitting for grease guns

17919 110 Bearing Packer with adapter for grease gun filler pump



17919 110

17694 Manual Grease Lubricator for 35 lb. Pails

Set includes grease pump, dust cover, follower plate, 6 ft. grease hose, rigid spout, hydraulic coupler and ball valve to shut off grease flow. 1500 PSI pressure. Fits on standard 35 lb. pails. Pump is mounted on pail with 3 wing nuts.

17694



17695 Manual Grease Lubricator with 35 lb. Bucket

Used in applications with grease purchased in large 400 lb. drums. Set includes grease pump and steel container with foot rest to hold Unit in position during the lubrication process. Grease is filled in container. Pump assembly is mounted with 3 bolts on container. Comes with follower plate to compact grease in container. 6 ft. discharge hose, rigid spout, hydraulic coupler and ball valve.



17695

Grease Gun and Control Valve Accessories

Hydraulic Couplers, connecting threads 1/8" NPT

Our couplers are manufactured to meet the pressure requirements of our manual grease guns as well as pneumatic equipment. All couplers feature four jaws, providing a better grip on the grease fitting. Pressure rating: 5000 PSI.

Specifications: Flat hex 0.536" /13.5 mm. Hex point 0.606" /15.3mm.

Narrow end of coupler 0.531" /13.4 mm Overall length 1.447" 36.7 mm

12631 Standard coupler

12641 Hydraulic coupler 12631 in clam shell

12642 Coupler with ball check

12643 Coupler with precision machined jaws

This is our best coupler. Made in Germany.

Coupler with ball check has four jaws that form a superior connection between coupler and fitting. Maximum 10,000 PSI

Specifications: Diameter 0.59" Machined shanks 0.492" Overall length 1.57"

12699 Grease Gun Holder for 14 oz. Grease Guns

This handy holder mounts on equipment

Flexible Hoses for Manual Grease Guns

These grease hoses are for hand-operated grease guns only, and have a working pressure of 4500 PSI, and a burst pressure of 10,000 PSI.

Connections: 1/8" NPT male.

12654 Poly hose 6"

12656 Poly hose 12" bulk

12656 740 Poly hose 12" carded

12666 Poly hose 18" bulk

12666 741 Poly hose 18" carded

12664 360 Poly hose 36"

12665 590 Poly Hose 24"

12655 Rubber hose 12" bulk

12655 740 Rubber hose 12" carded

12665 Rubber hose 18"

12665 741 Rubber hose 18" carded

Carded hoses are designed for individual sale. Label on card shows pressure rating and dimension

Heavy Duty Rubber Hoses

They have a working pressure of 4000 PSI, and a burst pressure of 10,000 PSI. Connections: 1/8" NPT male.

12664 100 Rubber hose 24"

12664 148 Rubber hose 48"

12664 361 Rubber hose 36"

Flexible Poly Hose and Hydraulic Coupler Set

12657 Set, Hose 12656 and coupler 12631

12658 Set, Hose 12665 590 and coupler 12631

12659 Set, Hose 12664 360 and coupler 12631

High Pressure Hose with wire braid, 5000 PSI, S.A.E 100 RT

12745 Length 12" with 1/8" male threads

12746 Length 20" with 1/8" male threads

12009 Swivel 360 degree with hydraulic coupler

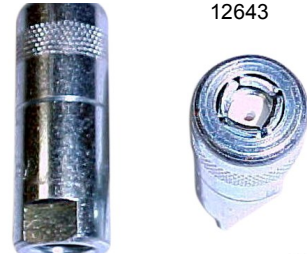
Locks in place at 60 degree increments, 1/8" NPT Female connection. Mounts on rigid spout 12635 and 12645

12130 Grease Injector Needle in clam shell

Use to lubricate in tight places such as sealed bearings or universal joints. Stainless steel needle is 18 gauge and 1 1/2" long. With standard straight grease fitting, connects to standard hydraulic coupler. Includes plastic cover to protect needle when not in use.



12631
12642



12643



12699



12656 740



Grease Fittings, Button Head Fittings and Couplers, Tools

Fittings are ISO 9001 quality certified and meet SAE J534 and Military Specifications

Metric Fittings

15007	6 mm	straight	6 mm
15107	6 mm	45°	6 mm
15207	6 mm	90°	6 mm
15009	8 mm	straight	8 mm
15109	8 mm	45°	8 mm
15209	8 mm	90°	8 mm
15113	10 mm	45°	10 mm
15213	10 mm	90°	10 mm



SAE Fittings

15026	1/8" PTF	straight	11/16"	7/16"
15026 541	1/8" PTF	straight, long	1.25"	7/16"
15026 542	1/8" PTF	straight, long	1.75"	7/16"
15126	1/8" PTF	45°		7/16"
15226	1/8" PTF	90°		7/16"
15126 542	1/8" PTF	65°	1.80"	7/16"
15126 543	1/8"-27 PTF	65°		7/16"
15127	1/4" PTF	45°		
15127 541	1/4" PTF	65°	7/8"	9/16"
15062	1/4" -28	straight	1/2"	
15062 542	1/4" - 28	straight	11/16"	5/16"
15062 543	1/4" - 28	straight	1-1/8"	17/64"
15162	1/4" - 28	45°	13/16"	3/8"
15162 541	1/4" - 28	45°		
15262 541	1/4" - 28	90°		
15262	1/4" - 28	90° short		

Thread Forming Fittings

15026 200	1/8"	Straight	1/8"	7/16"
15226 200	1/8"	90°	1/8"	7/16"

Flush Style Fitting

15638	1/4"	Flush style
-------	------	-------------

Button Head Fittings and Couplers



55837 543	Coupler		
55838	Fitting 1/4" PTF	53/64"	5/8"

Drive Fittings

15002 541	3/16" dia.	straight		
15002 542	3/16" dia.	straight	w/o ball	
15003 100	1/4" dia.	straight		
15003 541	5/16" dia.	straight	9/16"	1/4"
15004 100	5/16" dia.	straight	w/o ball	
15102 100	53/64"	straight	53/64"	3/16"
15102 541	5/16" dia.	65°		
15102 542	3/16" dia.	65°		
15102 543	45/64" dia.	65°		

16094 SAE Fittings Assortment 110 pieces

30 pcs 1/4-28 straight, 20 pcs 1/8" straight, 15 pcs. 45° 1/4-28, 15 pcs. 90° 1/4-28, 15 pcs. 90° 1/8", 15 pcs. 45° 1/8"

16095 Metric Fittings Assortment 110 pieces

40 pcs 6mm straight, 5 pcs 6mm 90°, 5 pcs 6mm 45°, 20 pcs 8mm straight, 5 pcs 8mm 90°, 5 pcs 8mm 45°, 20 pcs 10mm straight, 5 pcs 10mm 90°, 5 pcs 10mm 45°

16096 Metric and SAE Assortment 138 pieces,

M 6x1 mm, 20 pcs straight, 10 pcs 45°, 10 pcs 90°, 1/8" PTF, 20 pcs straight, 10 pcs 45°, 8 pcs 90° 1/4" - 28, 40 pcs straight, 10 pcs 45°, 10 pcs 90°



Grease Fitting Extractor and Rethreading Tools

16100 Small, for use with 1/4-28 and 6 mm fittings

16102 Large, for use with 1/8" NPT

A superior pump for a rugged environment

LUBEQ's TRUE BLUE PREMIUM Pneumatic Pumps!

5:1 and 9:1 Heavy Duty Pneumatic Oil Pumps



Specifications:		
Ratio:	5:1	9:1
Diameter of Air Motor	4.25"	4.25"
Suction Tube Connection	1-1/2"	3/4"
Maximum Air Pressure	120 PSI	120 PSI
Operating Air Pressure	90 PSI	90 PSI
Minimum Air Pressure	60 PSI	60 PSI
Maximum Material Pressure	600 PSI	1080 PSI
Air Inlet NPT	1/4" Female	1/4" Female
Material Outlet 5:1 & 9:1 Pumps NPT	3/4" Female	1/2" Female
Max. Sound Level at a Distance of 3 ft.	80dB	80dB
Air Consumption, Approx.	14 CFM	14 CFM
Delivery Performance per min at an Operating Pressure of:	450 PSI	810 PSI
Free Flow	10.8 gpm	6.5 gpm
At a Distance of 35 ft.	8.0 gpm	5.0 gpm
At a Distance of 100 ft.	6.5 gpm	5.0 gpm
At a Distance of 150 ft.	2.6 gpm	4.0 gpm
At a Distance of 200 ft.	N/A	4.0 gpm



All TRUE BLUE Pumps include a 2" bung adapter

Models	Suction Tube Length	5:1 Oil Pumps	9:1 Oil Pumps
Stub Pump	N/A	19500 010	19600 010
16 Gallon Drum	29"	19500 016	19600 016
55 Gallon Drum	38"	19500 055	19600 055
For Tanks with 2" bung adapter	44"	19500 275	19600 275
Recommended: Filter/Regulator/Lubricator	20216	20216	20216

10 year limited Warranty on all True Blue Pumps

TRUE BLUE Premium Oil Dispenser Sets



Our True Blue Oil Dispenser Sets feature our Premium Pneumatic Pumps – Giving you rugged durability, top-notch performance, and exceptional value, all in one convenient package!

	19505 114	19505 214	19514 211	19514 311	19567 114	19500 248
Set Includes:	Basic Set for 2" Bung	Basic Set for Open Head Drum	For 2" bung	For open head drum	Basic Set for 55 gallon Drums with 2" bung	Complete Set with Cart & Hose Reel
Pump	19500 016 5:1 Pump	19500 016 5:1 Pump	19500 016 5:1 Pump	19500 016 5:1 Pump	19500 055 5:1 Pump	19500 055 5:1 Pump
Bung Adapter on pump	19907	Pump mounts on dust cover	19907	Pump mounts on dust cover	19907	19907
Filter/Regulator/Lubricator	20216	20216	20216	20216	20216	20216
Dust Cover	N/A	17195	N/A	17195	N/A	N/A
Digital Meter	* ADD	* ADD	19703 200	19703 200	19703 200	19703 200
10 ft. 1/2" Hose	19563	19563	19563	19563	19563	Hose Reel 19650 035 35 ft. hose 1/2" dia.
Caster Base / Hand Truck	N/A	N/A	17211	17211	17010	17009 300

9:1 pump sets available

***ADD -Basic Sets allow you to add your choice of flow meter or control valve.**



19514 311



19500 248



Drums shown are not included

TRUE BLUE Premium Oil Dispenser Sets

These carts offer a solution to dispense two types of oil and grease. We use our high Quality TRUE BLUE air pumps with a 10 year warranty.

These sets allow a lower investment in oil or grease by utilizing two 16 gallon drums for different lubricants mounted on one cart.

The sets can be sold with hose reels for oil or grease.

Standard components: TRUE BLUE oil and grease pumps.

Alternative: Value Line pumps, see models in catalog.

Digital Oil Flow meter, can be substituted with a different model meter.

Hose reel sets come with Reelcraft quality hose reels, 35 ft. 1/2" hoses for oil and 30 ft. 1/4" for grease. Oil sets come with a Badger digital flow meter with an angled spout and small automatic tip.

All pump sets come with a Filter/ Regulator/ Lubricator.

We build these sets according to the customer specifications. Select pumps and accessories from our catalog.

Sets are built on our heavy duty truck 17009 300. The cart has two 8" wheels and two 6" lockable swivel casters. The drums are secured on the cart by a chain link to prevent the filled drums from sliding off the truck.

See examples below. As a guideline, our price list is showing basic prices for these models.

19500 118 TRUE BLUE 45:1 Grease Pump and 5:1 Oil Pump. Model with hose only.

Oil pump comes with a 20 ft. 1/2" oil hose, Badger digital oil flow meter with a 12" flexible spout and manual tip, Grease hose comes with a 30 ft. grease hose and high pressure control valve with a Z-swivel

19500 128 TRUE BLUE 45:1 Grease Pump and 5:1 Oil Pump Model with two hose reels.

Set is equipped with Reelcraft hose reels. Reel for oil 35 ft. 1/2" and reel for grease 30 ft. 1/4"

19500 258 TRUE BLUE 5:1 Oil Pumps Model with two hose reels

Set is equipped with two 5:1 oil pumps, two Badger digital flow meters with a rigid spout and small automatic tip and two Reelcraft Hose reels with 35 ft. 1/2" hose



TRUE BLUE & Value Line Wall Mount Sets

Wall Mount Oil Sets designed for a fast drum exchange

Instead of removing pneumatic pumps from empty drums, picking up dirt from the floor and mounting pump back on the new, filled drum, this set only requires the removal and mounting of the suction tube assembly. This set is ideal for applications with a frequent drum change.

Pumps are mounted on the wall bracket, the empty drum exchange only requires the removal of the suction tube assembly.

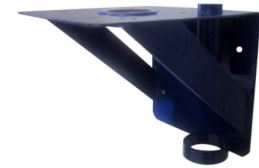
For installations with 16 or 55 gallon drums these unique sets are designed for tanks and drums. Unlike drum mounted pump sets this equipment only requires moving the suction tube assembly from the empty drum to the full container. Sets work best with 2" bung adapters on steel drums or steel tanks. For plastic tanks check dimension of bung used to fill tank.



Parts for Wall mount set with TRUE BLUE Pump



Removal of suction tube assembly



Wall Mount Bracket

Sets Include:	19500 375	19375 201
Pump	5:1 TRUE BLUE Pump 19500 010	5:1 Value Line Pump 19387 201
Foot Valve	03337	03337
Suction Tube for 55 Gallon Drum	03581	03581
Wall Mount Bracket	19522	19521
Hose 6 ft. 3/4"	19532	19532
Bung Adapter for Drum or Tank	01354	01355
Filter/Regulator/Lubricator	20216	20216

Value Pneumatic Oil Pumps, Ratio 1:1 and 5:1

A good quality pneumatic pump designed to allow high pressure oil pumping.

Pneumatic Oil Transfer Pumps, 1:1 Ratio

These economical transfer pumps have a ratio of 1:1 and are designed to move high volumes of oil from drums or tanks. Not recommended for use with hose reels or over long distances.

Pneumatic Oil Pumps, 5:1 Ratio

Oil pumps with a ratio of 5:1 are the most commonly used pumps for distribution of oil from holding tanks or drums to metered outlets. The pump will service two dispensing outlets up to 75 feet away. The delivery performance will vary depending on the viscosity of the oil and temperature.

Technical Description for 1:1 and 5:1 Pumps:

These pumps are manufactured from brass, aluminum, and carbon steel. The seals are made from polyurethane, Viton, and NBR. The pumps are quiet, and perform without vibrations. The air motor housing is cam precision machined from aluminum bar stock. Since there are no zinc die castings used, the pump is more resistant to water. All seals and O rings are precision fitted. The piston is made from polished, heat treated steel. This design offers more efficient repair and lower maintenance costs.

For a clean air supply and trouble free operation, we recommend these pumps be installed with our Filter/Regulator/Lubricator (20216).

Warranty: 5 Years see warranty terms and conditions



Specifications	1:1	5:1
16 Gallon Drum w/ 29" Suction Tube		19305 201
55 Gallon Drum w/ 37" Suction Tube	19135 201	19337 201
Tanks w/ 44" Suction Tube		19367 201
Stub Pump	19185 201	19387 201
Per Minute / Operating Pressure	90 PSI	450 PSI
Free Flow	10.5 gpm 40 liters	5.0 gpm/18 liters
Free Flow at a Distance	8.0 gpm at 30 ft. 4.75 gpm at 65 ft.	4.0 gpm at 70 ft. 2.85 gpm at 100 ft.
Maximum Sound Level at a Distance of 3 ft.	80 dB	80 dB
Air Motor Diameter	2.80"	2.80"
Maximum Material Pressure	120 PSI	600 PSI
Maximum Air Pressure	120 PSI	120 PSI
Operating Air Pressure	90 PSI	90 PSI
Minimum Air Pressure	60 PSI	60 PSI
Air Consumption, Approx.	9 CFM	11 CFM
Air Inlet	1/4" Female	1/4" Female
Material Outlet	3/4" Female	1/2" Female
Foot Valve	Included	Included
2" Bung Adapter	Included	Included

Value Pneumatic Oil Dispenser Sets with a 5:1 Pump for better delivery

The most popular sets with great pump performance at a competitive price!

Select method of pump mounting using the 2" bung on drum or open head drum with top cover of drum removed. Open head drum sets come with a dust cover with the pump mounted in the center of the drum. If you require a leak proof pump installation we recommend the bung mounted pump sets.

***Basic sets allow you to add your choice of oil flow meter, control valve or drum base with wheels**

1:1 Transfer Pump Set with Spigot for 55 gallon drums.

Pumps once spigot valve is opened.

This set includes	19195 201
Pump ratio 1:1 flow rate 10.5 gpm	19135 201
Drum size	55 gallons
Airline connector & 2" bung	yes
Filter/Regulator/Lubricator	yes
Oil Spigot	yes



Dispenser Sets	19305 214	19314 201	19314 301	19344 201	19348 201
Pump	19305 201	19305 201	19305 201	19337 201	19337 201
Drum size	16 gal	16 gal	16 gal	55 gal	55 gal
Drum mounting Open head models include a dust cover.	Open head	Open head	2" bung	2" bung	2" bung
Filter/Regulator/Lubricator	yes	yes	yes	yes	yes
Hose 10 ft. 1/2", medium pressure	yes	yes	yes	yes	Hose Reel 19650 825
Flow Meter 19703	* Add	yes	yes	yes	yes
Dust Cover 17184	yes	yes	N/A	N/A	N/A
Drum / Caster Base	* Add	17211	17211	17010	17009 300



**Add a meter or control valve to this set.*

19314 201
**shown with band dolly
17001**

19344 201

19348 201

Drums shown are not included

VALUE Oil Dispenser Carts

These sets use our new lower priced hand truck 17007. A cart designed to transport heavy drums such as a 55 gallon oil drum. This cart is also capable of holding a 16 gallon drum. Heavy gauge steel construction with two 8" wheels and one 6" lockable swivel caster.

To mount a hose reel the cart comes with a steel platform. We secure the drums with a steel chain. Models with a storage rack come with a cast aluminum rack bolted to the cart handles. Drum platform comes with a removable drum support for smaller diameter 16 gallon / 120 lb. drums. The cart is designed to easily transport filled drums on a level ground.

Oil Sets for 16 gallon or 55 gallon drums

Sets come with a **LUBEQ VALUE Line 5:1 oil pump 19337 201**

Including a 5 year warranty, Filter / Regulator/ Lubricator, Digital Badger Lube Meter with a rigid spout with a small automatic tip, and dust cover for open head drums.

Pump has a 450 PSI operating pressure, and delivers 5.0 gpm at free flow.

All accessories such as the hoses, control valve and coupler are rated for this pressure.

Sets with aluminum hose rack and 25 ft. 1/2" medium pressure hose and flow meter

Sets come with a heavy cast aluminum hose storage rack designed to hold up to 50 ft. of hose, mounted on hand truck.

Part Number

19448 for 55 gallon drums

19448 016 for 16 gallon drums



19703 200 Flow meter



Sets with a 25 ft. Reelcraft hose reel with 3/8" high pressure hose, Flow meter.

With a 25 ft. hose reel mounted on hand truck. Reel comes with a high pressure hose "Made in USA" with a pressure rating of 5000 PSI.

Hose specs: S.A.E. 100 R2T.

Part Number

19449 for 55 gallon drums

19449 016 for 120 lb. drums



Hose reel



Cart Set with 115 V Electric Motor Pump

With Farm type Control Valve and 12 ft. 3/4" discharge hose.

Cast aluminum pump has a 8 gpm delivery rate, 30 min on / off cycle, on/off switch mounted on pump, 36" power cord. Pump mounts on top of drum using a 2" bung. Set includes a suction tube for 55 gal drums. Pump is not UL listed.

Part Number

19548 for 55 gallon drums

Optional GPI Flow meter installed 19731



Utility Carts, Drum Cradle

LUBEQ Swivel Base, Band Dollies and Utility Carts make moving equipment sets easier. Our carts are designed to be used with our grease and oil equipment sets only.

The base holds your drums on a sturdy, welded platform. Made from steel, they have an adjustable clamping bolt to securely hold the drum in place. The casters and wheels are oil resistant.

- 17001 541** **Band Drum Base** for 35 lb. / 5-6 gallon pails 10-1/2" diameter
- 17001** **Band Drum Base** for 120 lb. / 16 gallon drums 14-1/2" diameter
- 17010** **Cross Bar Drum Base** for 400 lb. / 55 gallon drums Features wide steel cross bars and heavy duty casters. Requires assembly
- 17013** **Handle** for 35 lb. sets. The handle has wide steel cross tubing with a bracket for mounting on the pneumatic pump

17001 541



17001



17013



17010



Utility Carts with casters & wheels

17007 Cart for 400 lb. drums.

Steel construction build for 400 lb. oil and grease sets without hose reel

17007



17008 Hand truck.

For lubricator sets used on rough shop floors. Fits 16 gallon / 120 lb. drums. Two wheeled cart with platform. Comes with bungee cord to hold drum on hand truck.

17008



17009 300 Heavy Duty Utility Cart.

With platform to mount a hose reel for 400 lb. / 55 gallon drums. Holder for control valve, hose storage, drip container. Two 8" wheels and two 6" swivel casters.

17009 300



17211 Deluxe Caster Base

Fits 16 gallon / 120 lb. drums. Steel construction, black enamel coated, with four swivel casters. Wheels have 4" diameter. Drums are held on base with four brackets.



17211 with drum mounted

17011 Drum Cradle.

Cradle for 55 gallon drums. Tips and moves drum. Includes 2 1/2" poly wheels, self-storing, load-tipping lever. Assembly required.



19499 Hose Rack

Cast aluminum, holds approximately 25 ft. 1/2" hose. Predrilled for wall mounting.



Tank Packages with TRUE BLUE and *Value* 5:1 Pumps

Tank Equipment Sets - Tanks are not included

Sets are designed to mount pump on existing tanks with various tank depth. We offer two basic suction tube dimensions, the bung adapter allows an additional height adjustment.

Sets include: pumps shown, Filter/Regulator/Lubricator, digital flow meter with a rigid spout and small automatic tip, suction tube, foot valve, bung adapter, air line connectors, 2 ft. 1/2" connecting hose to connect pump to 50 ft. hose reel. Set requires a reel mounting plate on tank. Call us for options for tanks w/o reel plate.

Part Number	Ratio	Pump	Hose reel
19000 444	5:1 Value Line	19377 201	19650 650 with 50 ft. 3/8" hose
19000 644	5:1 TRUE BLUE	19500 275	19665 050 with 50 ft. 1/2" hose



Complete Tank Packages

Purchase fully assembled sets are shipped from Elgin, IL to your customer.

For a lower price: Set 19001 025

Tank is are drop shipped from the factory. Equipment is shipped from Elgin, IL. Requires assembly.

Call us for a freight quote



Part Number	Tank size and Equipment set	Tank
19001 025	275 gallon single wall oval tank. Tank is drop shipped from factory and equipment is shipped from Elgin, IL. Requires assembly. See part number 19000 444 for equipment set.	19419
19001 544	275 gallon single wall oval tank. Set with Value 5:1 pump, hose reel with 50 ft. hose 3/8". Set is shipped fully assembled from Elgin, IL.	19419
19001 564	275 gallon single wall oval tank. Set with TRUE BLUE 5:1 pump, hose reel with 50 ft. hose 1/2". Set is shipped fully assembled from Elgin, IL.	19419
19268	250 gallon single wall bench tank. Set with 5:1 Value Pump. Tank is drop shipped from factory, equipment is shipped from Elgin, IL. Requires assembly. See part number 19000 444 for equipment set.	19420

Bulk Oil Steel Tanks

Call us for Skid Tanks, Split Compartment, Vertical Round and Custom Tanks. Available in single and double wall.

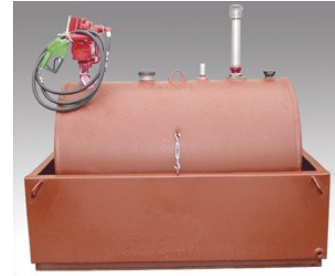
Bench Tanks

One standard flat top that allows more work surface, unique design eliminates as many weld seams as possible. Strategically located openings that allow the maximum amount of workspace. 4" high supports welded to the bottom of the tank for easy cleaning and inspections. 1 x 1" drain one end. Primer coating. All tanks are tested in accordance with and display the Underwriters Laboratories 142 label. Tank openings are covered with a plastic cap.



To see drawings call us or visit www.Lubeq.com

Gallons	Part	Weight	Part #	Weight
	Single Wall	12 gauge	Double Wall	12 gauge
250	19420	293 Lbs.	19430 250	580 Lbs.
350	19420 350	350 Lbs.	19430 165	388 Lbs.



Oval Tanks, Skid Tanks

Standard features:

3/4" threaded opening to drain tank, 4 - 2" openings on top U.L 142 or U.L 80 approval, Primer coating, exterior chemically cleaned. Tanks are shipped with plastic covers on vent openings, mounting bracket for LUBEQ reels, Heavy duty 1 1/4" pipe lugs.

To see drawings call us or visit www.Lubeq.com

Tanks are shipped primer coated.

Add a Reel Plate Part Number 19400 005

Ask about our horizontal tank and dike options.

Gallons	Single Wall	Part Number	Gauge
300	horizontal	19418	
275	horizontal	19419	12
275	vertical	19419 275	12
330	vertical	19429 335	12
Gallons	Double Wall	Part Number	Gauge
275	horizontal	19419 475	12
330	horizontal	19429 460	12
330	vertical	19429 468	12

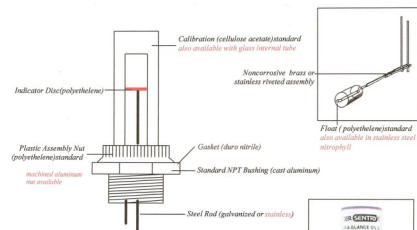


Float Gauges for tanks, call us for a current price

Part Number	Tank Depth	Part Number	Tank Depth
01331	44"	01341	48"
01335	32"	01342	60"
01338	36"	01343	63"
01339	66"	01344	72"
01340	38"	01345	54"

Steel Tank Accessories

- 19419 101 2" Lockable Flip Top
- 19419 402 2" Bung cap, cast iron



The At-A-Glance Type D Gauge is a reliable, swing arm type gauge used for measuring all types of liquid levels. Its simple mechanical design promotes durability, minimal upkeep, and easy/inexpensive repairs. With its many available options it is a versatile and inexpensive solution to all of your tank monitoring needs.



Hose Reels

TRUE BLUE Reels

Hose Reels Better by Design!

Steel stamped guide arm is reinforced to reduce bending due to angular pull.

Adjustable guide arm allows multiple guide arm positions and easy field adjustments.

Corrosion-Resistant steel components are individually powder coated.

Long Life Drive Spring. Declutching arbor virtually eliminates possibility of spring damage due to reverse winding of reel spool. Structural Strength. Welded heavy gauge steel frame includes dramatically flanged edges and stiffening ribs for lighter weight, yet stronger components for ease of handling and installation.



	Part Number	Pressure PSI	Hose Length	Hose Diameter
Grease	18050 025	5000	25 ft.	3/8"
Grease	18050 038	5000	50 ft.	3/8"
Grease	18058 035	5000	35 ft.	1/4"
Grease	18058 050	5000	50 ft.	1/4"
Oil	19650 035	2000	35 ft.	1/2"
Oil	19650 099	3000		Reel only (up to 35 ft.)
Oil	19665 050	2000	50 ft.	1/2"
Oil	19665 099	3000		Reel only (up to 50 ft.)
Oil	19665 8275	1500	75 ft.	1/2"
Oil	19665 83050	1250	50 ft.	3/4"
Air/Water	20904 650	300	50 ft.	3/8"
Air/Water	20905 025	300	25 ft.	1/2"
Air/Water	20905 050	300	50 ft.	1/2"
Fuel	20907 050	250	50 ft.	3/4"



Value Reels

Designed for less demanding applications. Made in USA. Heavy gauge steel parts with re-enforced ribs to increase strength. Industrial grade drive spring, protected in reel drum. Hose retracts every time, latch mechanism is mounted on guide arm to eliminate latch-out at full extension. Long lasting latch spring, stainless steel torsion spring is used on the latch to insure maximum life. Field tested swivel assures long service life. All steel components are powder coated. Versatile mounting. Dimensions: Diameter 17 7/8" drum size depending on model from 5 3/4" to 7 3/4".

	Part Number	Hose Length	Hose Diameter
Grease	18050 625	25 ft.	3/8"
Grease	18050 635	35 ft.	3/8"
Oil	19650 825	25 ft.	1/2"
Oil	19650 835	35 ft.	1/2"
Oil	19650 625	25 ft.	3/8"
Oil	19650 635	35 ft.	3/8"
Oil	19650 650	50 ft.	3/8"
Air/Water	20903 650	50 ft.	3/8"
Air/Water	20903 850	50 ft.	1/2"



Crank Reel without Hose

Adjustable spool rotation drag that eliminates hose backlash. Durable powder coat finish. Full flow shaft and ball bearing swivel. Steel drum. All bolted frame construction.

Part Number	Pressure PSI	Hose Capacity
20321 200	1000	for 200 ft. 1/2" hose, low pressure



Badger Mechanical Flow Meters

Badger mechanical meters are designed for servicing cars and trucks, busses, construction equipment, and other vehicles and machinery. Their ruggedness and comfortable pistol grip combine to make them a durable, user-friendly tool. The ideal choice for use with overhead hose reels, these meters are capable of dispensing ATF, motor oil (S.A.E. 5 to 50), gear oil (S.A.E. 80 to 240), and **antifreeze (must use special fluids meter)**. They have cast aluminum housings with a scratch-resistant baked-on epoxy finish. Inventory is easily maintained by using the non-resettable totalizing register.

Specifications on all Mechanical and Mechanical Preset Meters:

Accuracy: +/- 0.65% for Mechanical, +/- 3.0% for Mechanical Preset

Flow Rate*: 0.4 to 4.0 GPM Max. Operating Pressure: 1000 PSI

Max. Operating Temperature: 110 °F Inlet & Outlet Connections: 1/2" NPTF

* Flow rates will vary with fluid viscosity.



19723 760

Mechanical Flow Meters

Model	Graduation	Dial Capacity	Totals	Spout
19723	1/4 quart	16 quarts	quarts	rigid spout automatic tip
19723 746	1/4 quart	16 quarts	quarts	12" flexible spout large tip
19723 760	1/4 quart	16 quarts	quarts	12" flexible spout manual tip

Mechanical Preset Meters

Badger mechanical preset meters give you all of the rugged reliability of standard Badger mechanical meters, with the added feature of preset dispensing, which allows you to have total control over your fluid dispensing. To select a specific quantity for dispensing, turn the knob counterclockwise to the desired value. When the trigger is depressed, it will lock in the "on" position. As fluid is dispensed, the knob rotates towards zero. When the desired quantity has been dispensed, the trigger latch is released, automatically stopping the flow. Mechanical preset meters come with attached trigger guard.

Model	Graduation	Dial Capacity	Totals	Spout
19724	1 quart	60 quarts	gallons	rigid spout automatic tip
19724 200	1 quart	16 quarts	quarts	rigid spout automatic tip
19724 300	1 gallon	60 gallons	gallons	rigid spout automatic tip
19724 746	1 quart	60 quarts	gallons	12" flexible hose automatic tip
19724 760	1 quart	60 quarts	gallons	12" flexible hose manual tip



19723



19724

Badger Digital Flow Meters

Easy to handle, warranty and repair service backed by Badger USA. This precision meter totalizes in gallons. Request data sheet for details.

- Setting can be done on the face plate. NEW changed electronics allow easy setting
Meters have lightweight cast aluminum housings and oval gear mechanisms that are accurate to +/-0.5%. Connecting thread 1/2" NPT
- The digital LCD readouts display in 00.1 increments. It displays the volume discharged and an overall total. Flow rate 8 gpm
- Reset buttons. Measuring in pints, quarts, gallons and liters
- These meters are powered by 3V lithium batteries CR 123A that last for 3+ years
- Batteries can be easily replaced by the operator



19703

19703 Digital Badger Meter

Meter set with angled rigid spout and automatic non-drip tip.
Badger control valve 19718 100.



19703 200

19703 200 Digital Badger Meter

Same as 19703 with VALUE control valve 19717 200, rigid spout and small automatic tip

19703 260 Digital Badger Meter

with VALUE Control Valve. Same as 19703 760.



19703 260

19703 746 Digital Badger Meter

With Badger Control valve 19718 100
Set with 12" flex. hose and large automatic tip
19746

19703 760 Digital Badger Meter.

With Badger Control Valve 19718 100
Set with 12" flexible hose and manual shut off tip
19748



19703 760

19704 Meter for Anti-Freeze

To dispense anti-freeze. With rigid spout and automatic non-drip tip. See 19703 description

19703 250 Deluxe Digital Pistol grip model

Same features used in 19703. Pistol grip model offers a well balanced rugged meter. Glass-filled, nylon meter housing Aluminum meter body. With rigid spout and small auto-tip. Use with all accessory spouts.

This meter can be equipped with 12" flexible hose sets

19760 set with a manual shut off tip
19746 set with a large automatic tip



19703 250 Deluxe Digital Model

Badger Digital PRESET Meters, Inline Meter

Description

The new Badger Electronic Preset Meter is designed specifically to meter and dispense bulk fluids for servicing automobiles, trucks, buses, construction equipment, and similar applications. The meter is lightweight, rugged and has a comfortable grip. The meter is designed specifically to dispense motor oils (S.A.E. 5-50), gear oils (S.A.E. 80-240), automatic transmission fluid, antifreeze (Ethylene Glycol) solution, and hydraulic fluid. A rugged, shock-resistant plastic cover similar to that used for power tools protects the entire meter.

OPERATION

The meter is fully programmable in count-up or count-down mode. The unit is programmed by the user to dispense in quarts, liters, pints, and gallons. You can program any unit of measure in a matter of seconds. A 5-digit liquid crystal display, accurate to the second decimal point, shows the exact amount of fluid dispensed. Badger's EPM meter uses 4 replaceable AA batteries and is calibrated at the factory. The meter can also be recalibrated easily in the field. Electronic accuracy will help you save time and money. The preset feature will allow users to perform other service tasks while fluid is dispensed.

FEATURES

- Oval Gear Driven Meter
- Durable, Light weight
- Large, Easy-to-Read LCD Display
- Totalizes in Liters and Gallons
- Dispensing Measurement in Liters, Quarts, Pints, and Gallons

Specifications

- Max. Totalizer Number: 99,999 Gallons or Liters
- Dispense Volume: 99,999 Units
- Max. Preset Volume: 999 Units
- Anticipation feature for Greater Fill Accuracy
- Calibration factor for different fluids
- Changeable units of measurement
- Total and Resettable Total
- History (Previous 5 Batches)

19695 Digital Preset Meter

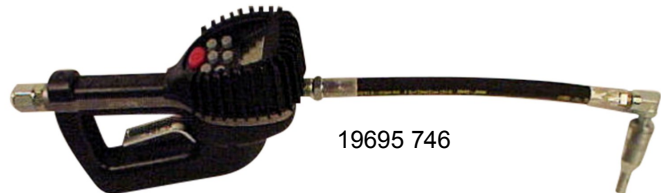
with rigid spout and automatic non-drip tip. Meter has one programmable Preset function



19695

19695 746 Digital PRESET Meter

With 12" flexible hose 19746



19695 746

19695 760 Digital PRESET Meter

With 12" flexible hose 19760.

19703 536 Meter for Oil for Inline installation, 1/2" NPT connection

The electronic lube meter is designed specifically to dispense motor oils (S.A.E. 5-50) gear oils (S.A.E. 80-240), automatic transmission fluid. Modular design, low cost, lightweight and rugged. The electronic register module contains a microprocessor board powered by a lithium battery.

It can be programmed to dispense in pints, quarts, liters, or gallons and will totalize in gallons. The meter calibration factor is determined during factory test.

The meter can be recalibrated in the field for fluids or different viscosity if required.

A 5-digit liquid crystal display, accurate to the second decimal place, shows the exact amount of fluid dispensed. The entire register module is protected from the wear and tear of normal shop use by a rugged, glass filled, shock resistant, nylon housing.



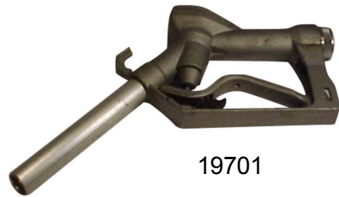
19745 Flexible hose, 12" with 1/2" male and 1/4" male connections. Use with part 19748 001 and 19749.



19728
Soft rubber ribs protects digital meter



Control Valves for Oil, Accessories for Oil Meters and Control Valves



19701



19718 100



19717 200



19718 760



19747 # 2



19718



19749 # 3



19746



19748 #1

1 # 2 # 3 # 4 # 5



19526

19527

19529



19617



19616

2" I.D. Medium pressure hose, NPT Pressure rating: 2000 PSI. Hose specs: S.A.E. R1T. One wire braided hose.

- 19563** 10 ft. length
- 19565** 20 ft. length
- 19569** 25 ft. length
- 19570** 30 ft. length
- 19575** 50 ft. length
- 19581** 2 ft. connecting hose
- 19582** 5 ft. connecting hose



Control Valves for Oil

19701 Farm type control valve, 3/4" connection.

19616 Swivel straight 1/2" NPT M x 1/2" F

19717 100 Badger control valve. Valve without spout

19717 200 Value Handle only, Aluminum / steel construction, 1/2" connection. Handles pressure up to 1000 PSI. Add a spout or hose assembly 19746 or 19760.

19718 Value Set includes control valve 19717 200, swivel 19616, rigid spout 19741 and non-drip tip 19747.

19718 100 Set with control valve with trigger lock, swivel 19616, rigid spout 19741 and non-drip tip 19747.

A superior handle designed by Badger.

19718 746 Badger control Valve with handle 19718 100, 12" flexible hose, large automatic tip 19749.

19718 760 Badger Control Valve with handle 19718 100, 12" flexible hose and manual tip 19748.

Accessories

19740 Rigid spout Straight 1/2" connections (#4 in picture at left)

19741 Rigid spout, angled 1/2" M connections with female thread for non-drip tip 19747. (#5 in picture at left)

19746 12" Flexible hose No 19 745 with 90 degree angled adapter and large automatic non-drip tip No 19749. Hose has 1/2" M connections.

19748 Manual shut off non-drip tip, connecting thread 1/4" Female. (#1 in picture at left)

19747 Small automatic non-drip tip, fits on spouts 19 740, 19741, and 19745. (#2 in picture at left)

19749 Heavy automatic non-drip tip. A top quality, heavy tip. 1/4" F. (#3 in picture at left)

19760 Flexible hose 19745 with 90° angle and No 19748 manual shut off tip

Bung Adapters, Foot valve, Swivel

19526 for 1.66" diameter tubing for 3:1, 5:1 pumps

19527 for 1.25" diameter tubing for 50:1 pumps

19529 Converts 2" bung adapters to fit on plastic drums or pails

19617 Swivel connector 1/2" x 1/2" Use to assemble hoses to equipment. Swivel action stops once connections are tightened

Pump Oilers

These oilers have seamless heavy-gauge steel bodies, and their force feed pumps have two steel ball valves, giving you an exact degree of reliability. The pump parts are steel or brass, and are easily removed for convenient cleaning. The pump oilers have a blue or red oven baked enamel finish, and come labeled with UPC code. Snap bottom oiler come with black color.

Part Number	Capacity	Type	Spout length	Spout type
05112	6 oz.	Pistol	4"	rigid
05114	12 oz.	Handled	6"	rigid
05115	16 oz.	Handled	6"	rigid
05134	12 oz.	Handled	8"	flexible
05135	16 oz.	Handled	8"	flexible
05122	6 oz.	Pistol	6"	flexible
05217	1-1/2 pints	Handled	6"	rigid
05218	2 pints	Handled	6"	rigid
05227	1-1/2 pints	Handled	8"	flexible
05228	2 pints	Handled	8"	flexible

VALUE Oilers

05115 090	16 oz.	Handled	6"	rigid
05135 090	16 oz.	Handled	8"	flexible

Detachable spouts

Rigid spouts have a pointed tip.

Flexible spouts unique design which allows bending and twisting. Wire inlay retains shape



Plastic Squeeze Bottle Dispensers

These versatile dispensers can be used to dispense most chemicals. The bottles are unbreakable and rust proof. Use for glue, water, solvents or oil. Length of steel spout is adjustable, tip has a shut off nozzle.

Part No	Capacity	Spout length
06865	8 oz.	Extends to 6-3/4"
06866	1 pint	Extends to 9"

Tip nozzle Spouts can be extended. Lock nut holds spout in position.



17012 Aluminum Drum Wrench.

Lightweight and economical drum wrench made of cast aluminum.

17014 Universal Spoke Drum Wrench

Sturdy steel spoke wrench, with a black painted finish.

20240 Barrel Faucet.

2" Polyethylene drum tap for use with tanks. Includes 2" drum opening adapter.



17012 & 17014



20240

Electric Pumps

Application	Up to 30 wt. Oil Fuel and Petroleum	Oil, Waste Oil, Hydraulic Fluid, & Antifreeze	Oil, Waste Oil, Hydraulic Fluid, & Antifreeze	VALUE Oil Transfer Pump
Part Number	23252	23513	23516	23615
Design	Gear	Gerotor Gear	Gerotor Gear	Vane
Power Source	115 Volt AC	115 Volt AC 1 HP, 13 amps	115 Volt AC 1/2 HP, 7.5 amps	115 Volt AC No UL listed
Body	Glass-Filled Polyester	Cast Aluminum	Cast Aluminum	Cast Aluminum
Delivery Rate	Up to 8 GPM	8 GPM	4 GPM	6-15 GPM
Fitting	1" Inlet, 1" Outlet	1" Inlet, 3/4" Outlet	1" Inlet, 3/4" Outlet	1" Inlet, 1" Outlet
Duty Cycle	30 min. on, 30 min off	30 min. on, 30 min off	30 min. on, 30 min off	30 min. on, 30 min off
Tank Mount	2" Union Ring (fits 2" Bung)	2" bung	2" bung	2" bung
Includes	12 ft. x 1" discharge hose, ball valve nozzle, adjustable suction pipe	8 ft. hose, ball valve with spout, two piece suction Pipe. 1" x 41"	8 ft. hose, ball valve with spout, two piece suction Pipe. 1" x 41"	6 ft. hose, manual nozzle, two piece suction Pipe. 1" x 41"
Power Cord	3 Prong Connector	36" 3-Prong	36" 3-Prong	36" 3-Prong
Shipping Weight	23 Lbs.	35 Lbs.	25 Lbs.	35 Lbs.



23252



23513



23516



23615

Part Number	23110	23112
Design	Gear	Gear
Application	Fuel & Petroleum	Fuel & Petroleum
Power Source	12 Volt DC	12 Volt DC
Body	Aluminum	Aluminum
Delivery Rate	8 GPM	Up to 15 GPM
Fitting	3/4" Inlet, 3/4" Outlet	1" Inlet, 3/4" Outlet
Duty Cycle	15 min. on, 5 min. off	30 min. on, 30 min off
Bung	2" NPT	2" NPT
Comes with	10 ft. x 5/8" Buna-N electrically conductive discharge hose, manual nozzle, 15 ft. power cord 3 pieces suction pipe, 20 Amp Fuse Strain Relief Grip	10 ft. x 3/4" Buna-N electrically conductive discharge hose, 2 piece suction pipe, manual nozzle, and 15 ft. Cord
Approvals	UL Listed CSA Certified	UL Listed, CSA Certified
Shipping Weight	16 Lbs.	24 Lbs.



Barrel Pumps

13006 Plastic Siphon Pump

For use with 55 gallon drums. Ideal for pumping light fluids such as water or solvents; chemicals such as antifreeze. Pump is made from polyethylene and will get damaged with aggressive fluids! Siphons approx. 6 gallons per minute. Comes with 2" bung adapter, 3 ft. discharge hose, 2 piece suction tube for 55 gallon drums.



13006

13007 T-handle Pump for Chemicals, Mild Acids, Solvents.

This rugged pump is built with a solid construction, having thicker walls and durable valves. Pump is made from polypropylene and has Teflon seals. The removable discharge spout also has a hose adapter for 3/4" garden hose, allowing greater flexibility in use. The bung adapter fits 2" buttress or 2" pipe threads. Delivers approx. 8 oz. per stroke. This is a one-size-fits all pump that will work with containers from 5 to 55 gallons. Pump comes with 20" suction tube and 20" threaded extension for total length of 40".

13007

13017 Plastic Hand Pump for pails, small containers.

This polyethylene pump has a steel suction tube and piston rod, and a vinyl 48" discharge hose with a curved metal nozzle. For use with 5 to 6 1/2 gallon containers. 2" Bung adapter.

13017

13008 Plastic Lever Pump

Use for water, alcohol, oil, diesel, kerosene, antifreeze. For use with drums up to 55 gallons. Polypropylene pump body. Plated steel piston rod for greater durability. With a telescoping suction tube. Long lever handle 2" bung adapter. Delivery 1 pint per stroke.



13008

13009 Ryton Plastic Lever Pump

Use for petroleum, diesel, engine oil, ATF, machinery oil cutting oil, water, antifreeze, mild acids and solvents such as windshield wiper fluid Ryton pump body Stainless steel piston, and plunger. For use with drums up to 55 gallons. With a telescoping suction tube. Long lever handle. 2" bung adapter. Delivery 1 pint per stroke.



13009

13014 Steel Lever Pump, delivery approx. 10 oz. per stroke.

Chrome plated 9 1/2" steel barrel with die cast zinc pump head Metal telescoping suction tube for drums up to 55 gallons. Polyethylene plunger, carbon steel piston rod, detachable curved metal discharge spout, spout adapter can be used to attach a 3/4" garden hose, 2" bung adapter. Use for petroleum, diesel, motor oil, ATF and cutting oil.

Not recommended for water or corrosive fluids!

13016 Steel Lever Pump with 12" Pump Barrel.

This pump has a longer barrel for better clearance on drum. Heavy duty die cast zinc pump head, steel barrel with black enamel finish. 2" bung adapter, telescoping suction tube for 55 gal. drums. Pump has special discharge spout with shut off valve to prevent dripping. Delivery rate 10 oz./ stroke. Lever comes with plastic grip. Use for petroleum, diesel fuel, engine oil, ATF, machinery oil, cutting oil.

Not recommended for water or corrosive fluids!

13014

13018 Stainless Steel Lever Pump, Best for Chemicals

Body and parts material 304 SS, zinc die cast head, wetted parts PVDF, PTFE, Max. viscosity 2000 SSU, max temp. 140F. Delivery rate approx. 10 oz. per stroke. Stroke 6 1/2 ". Self priming, zinc die cast plunger has two brass rings and o-ring for excellent priming and suction. 6" curved detachable SS steel discharge spout. Can be used for 3/4" hose assembly. For drums up to 55 gallons. Telescoping suction tube with O-ring at the connection of inner and outer tube. Includes 1 -1/2" and 2" bung adapter. Inlet 1", outlet 3/4", overall length 51-1/4" Recommended for solvents, corrosive liquids, additives.

13019 Steel Industrial Lever Pump

Body and parts material carbon steel, zinc die cast head, wetted parts PVDF, PTFE. Delivery rate approx. 10 oz. per stroke. Self priming, zinc die cast plunger has two brass rings and O-ring for excellent priming and suction. 6" curved detachable SS steel discharge spout. Can be used for 3/4" hose assembly. For drums up to 55 gallons. Telescoping suction tube with O-ring at the connection of inner and outer tube. Includes 1 -1/2" and 2" bung adapter. Inlet 1", outlet 3/4", overall length 51-1/4" Recommended for oil and petroleum products. **Not recommended for chemicals and water based fluids.**



13021

13021 High Volume Lever Pump designed for high viscosity fluids.

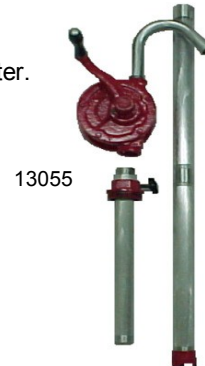
Delivery approx. 18oz. per stroke. Die cast aluminum body with polyethylene plunger, neoprene seals, steel piston rod and lever assembly with plastic grip. Curved and angled metal discharge spouts. Angled spout comes with strainer. Telescoping suction tube with bottom wire screen for drums up to 55 gallons. Fits 2" bung adapter.

Not recommended for chemicals and water based fluids

Rotary Pumps

13055 Cast Iron Body. The most popular model

Pump has 5 1/2" diameter body, cast iron rotor with metal vanes, With a 3 piece steel suction tube. Use for drums up to 55 gallon Capacity 1 quart per 4 turns or approx. 8 gallon per minute. Comes with a 3/4" curved discharge spout and adjustable 2" bung adapter. Zinc die cast crank arm with wood grip. Pump is recommended for diesel fuel and light oils.
Not recommended for water, solvents or chemicals.



13055 337 Cast Iron Body with Foot Valve (Same as 13055)

Comes with foot valve 03337 to keep pump primed. Precision machined valve seat with large chrome plated steel ball retains fluid level in suction tube.

13056 Cast Iron Body with 6 ft. Discharge Hose (Same as 13055)

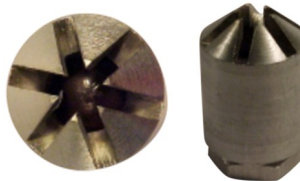
Comes with 6 ft. discharge hose and curved metal spout. Includes hose clamps. Hose is gasoline and diesel resistant with a 3/4" diameter.

13056 337 Cast Iron Body with Foot Valve and 6 ft. Discharge Hose (Same as 13055)

Set includes 13056 and foot valve 03337 to keep pump primed.

03337 Foot valve used for 13056 337 and 13055 337

Precision machined valve seat with large chrome plated steel ball retains fluid level in suction tube. With 3/4" NPT female thread.



13057 Polyethylene Body for Chemicals.

A rotary pump with a competitive price.

Pump has 5 1/2" diameter body and rotor, with 3 piece suction tube for drums up to 55 gallons. Capacity approx. 1 quart per 4 turns or approximately 8 gal per minute. Comes with a 3/4" curved discharge spout and adjustable 2" bung adapter. Pump is recommended for commonly used chemicals such as mild acids, mild solvents, antifreeze and water.

Not recommended for acetone or aggressive chemicals.



13062 Ryton Body with superior chemical resistance properties.

All parts such as discharge spout, springs, spring rod, screws, handle shaft and suction tube are made from SS304 or SS41 material. PTFE lip seal and viton O-rings, vanes are made from Bakelite. Body has 5 1/2" diameter with a discharge capacity of 10 oz. per 1 turn. Comes with 1 1/2" and 2" bung adapter, 3 piece suction tube for drums up to 55 gallons.

Recommended for oil, corrosive and volatile chemicals, kerosene and gasoline.



Fluids	13006	13007	13008	13009	13014	13016	13017	13018	13019	13021	13055 13056	13057	13062
Chemicals	X	X	X	X								X	X
Solvents	X	X		X			X					X	X
Petroleum	X	X	X	X	X	X	X	X	X		X	X	X
Diesel	X	X	X	X	X	X	X	X	X		X	X	X
Engine oil		X	X	X	X	X	X	X	X	X	X	X	X
Mild acids	X	X		X				X				X	X
ATF	X	X	X	X	X	X	X	X	X	X	X	X	X
Water	X	X		X				X				X	X
Anti freeze	X	X	X	X				X				X	X
Kerosene	X	X	X	X				X				X	X

Gear Oil Pump Sets for pails and drums, Air Pressure Oil Dispenser

17018 Pump Set

For standard 6 gallon open head pails.

This lever action pump includes a metal dust cover with three wing nuts, 4 ft. discharge hose and a curved metal nozzle 1/2".



17018

The models 17024, 17025 and 17029 055 now come with a stronger pump. Better flow rate, and a more robust construction!

17024 Gear Oil Pump Set for 16 and 55 gallon drums.

This lever action pump comes with a telescopic suction tube for drums up to 55 gal. Pump is mounted on drum using the 2" bung adapter Comes with 4 ft. discharge hose and curved metal nozzle 1/2".



17024



17025

17025 Pump for 16 gallon, open head drums.

This pump set includes a dust cover with three wing nuts. Same features as 17024 above.

17029 055 Pump Set with Flow Meter for 55 gal drum with 2" bung.

Same as 17024, cross bar drum base 17010 and Badger digital in-line flow meter 19703 536.

27822 Air Pressure Dispenser 10.5 gallon

Filled tank is pressurized to 70 PSI. Unit can dispense independent from air supply. One pressure charge will drain tank at an approx. flow rate of 2 gpm. Flow will reduce with volume dispensed.

The pressurized tank allows the dispensing of lubricants through the 6 ft., 1/2" diameter rubber hose, control valve with swivel connector and bent rigid discharge spout with manual shut off tip. Tank includes a pressure gauge, filter regulator. Comes with safety valve and sight gauge to allow monitoring of fluid level. The top of tank holds a tool tray. Tank comes with four swivel casters, two of which can be locked. Unit can be equipped with an inline flow meter.



Mobile Fluid Transfer Equipment. Fill antifreeze directly from 55 gallon drum with diaphragm pump.

Set comes with a 1/2" air diaphragm pump, 10 ft. discharge hose, digital Badger flow meter for anti freeze, Reelcraft hose reel for air pressure to run diaphragm pump with 50 ft. hose 3/8" dia. Suction tube for 55 gal drum is designed for a quick drum exchange connected to diaphragm pump with a 6 ft. 1/2" connecting hose to remove suction tube. All equipment is mounted on a heavy duty hand truck designed for 55 gal drums. Truck comes with two lockable swivel casters and two large wheels.

Part Number	19800 103
Pump Type	Diaphragm 1/2" with up to 17 gpm delivery 19060
Flow Meter	19704 for antifreeze
Discharge Hose	10 ft. 1/2" Hose
Hose Reel	20903 650 With 50ft. 3/8" air hose
Mounted on cart	17009 300

Quick drum exchange with removable suction tube



DIAPHRAGM PUMPS Pump Models and Data

Premium Quality ALLFLO Pumps.

Our double diaphragm pumps can be operated by compressed air or any non-flammable compressed gas, do not require lubrication, are resistant to freezing, and will not stall at slow speeds. They have a simple, rugged design that is resistant to dirty or wet air supply, and does not use brass or other metallic components in their all-plastic air system, so there is no risk of corrosion. The pumps are self-priming and can run dry without damage. Capable of pumping anything that will pour, these pumps are ideal for waste oil or other high viscosity fluids. All models come with a muffler.

Aluminum Diaphragm Pump Models	
19061	1/2" Aluminum, Geolast, Nitrile
19063	1" Aluminum, Geolast, Nitrile
19066 052	1/2" Aluminum, Geolast, PTFE Balls
19067 052	1" Aluminum, Geolast, PTFE Balls

Poly Diaphragm Pump Models	
19060	1/2" Geolast, Nitrile
30060	1/2" Geolast, Nitrile for DEF
30061	1" Geolast, Nitrile for DEF

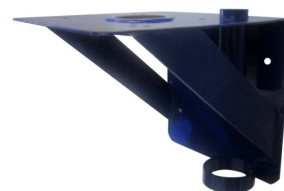
19522 Mounting Bracket

Use to mount Diaphragm or Pneumatic Pumps. Welded steel construction. 9x10" top plate, 9" high. Predrilled 1/4" holes for diaphragm pumps. 2" bung opening with tube to hold control valve.

Drum Kits: Includes 2" bung adapter and suction tube

19070	For 1/2" Pumps
--------------	----------------

Model	1/2"	1"	1-1/2"
Adjustable Capacity	0 to 17 gpm	0 to 41 gpm	0 to 130 gpm
Max Temp. Metallic Models	150° F 200° F	150° F 200° F	150° F 200° F
Max. Air Pressure	120 PSI	120 PSI	120 PSI
Min. Air Pressure	20 PSI	20 PSI	20 PSI
Dry Lift Capacity	15 ft. (vertical)	15 ft. (vertical)	15 ft. (vertical)
Dry Lift Capacity w/PTFE Balls	10 ft. (vertical)	10 ft. (vertical)	10 ft. (vertical)
Maximum Solids	1/8"	1/4"	1/4"
Opt. Max-Pass Valve System Poly Models Only	20 ft. Dry Lift 3/8" Solids	18 ft. Dry Lift 3/4" Solids	N/A
Air Supply Inlet Outlet	1/4" NPT F 3/8" NPT F	1/4" NPT F 3/8" NPT F	3/4" NPT F 3/4" NPT F
Fluid Inlet Discharge	1/2" NPT F	1" Flange	1-1/2" Flange
Air Consumption SCFM/gal day 60 PSI Pressure 100 PSI Pressure	11/10 gallon 17/14 gallon	26/24 gallon 43/40 gallon	80/60 gallon 60/80 gallon

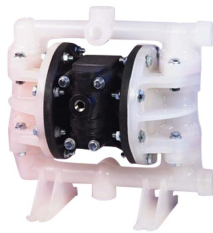


Diaphragm Pump Chemical Resistance Chart

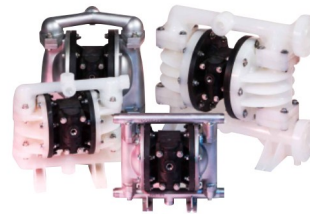
Fluid Type	Housing	Pump Parts	1/2"	1"
Alcohols, Specifically Ethyl, Methyl	Poly	Polypropylene/Buna	19060	
Anti-Freeze, Ethylene Glycol	Poly	Polypropylene/Buna	19060	
	Aluminum	Aluminum/Buna		19063
Automatic Trans. Fluid	Aluminum	Aluminum/Buna	19061	19063
Aviation Gasoline	Aluminum	Aluminum/Buna	19061	19063
Diesel Fuel	Aluminum	Aluminum/Buna	19061	19063
Diesel Exhaust Fluid (DEF)	Poly	Polypropylene	30060	30061
Fuel Oil	Aluminum	Aluminum/PTFE	19066 052	19067 052
Gasoline - leaded only	Aluminum	Aluminum/PTFE	19066 052	19067 052
Hydraulic Oil, Petroleum Based	Aluminum	Aluminum/Buna	19061	19063
Hydraulic Oil, Synthetic Based	Aluminum	Aluminum/PTFE	19066 052	19067 052
Jet Fuel	Aluminum	Aluminum/Buna	19061	19063
Kerosene	Aluminum	Aluminum/Buna	19061	19063
Motor Oil, Petroleum Based	Poly	Polypropylene/Buna	19060	
	Aluminum	Aluminum/Buna	19061	19 063
Motor Oil, Synthetic Based	Aluminum	Aluminum/PTFE	19066 052	19067 052
Waste Oil, w/Small Solids	Aluminum	Aluminum/PTFE	19066 052	19067 052
Waste Oil, w/Large Solids Includes Max-Pass Opt.	Aluminum	Aluminum/PTFE	19066 052	19067 052
Water, Fresh	Poly	Polypropylene/Buna	19060	
	Aluminum	Aluminum/Buna	19061	19063
Windshield Washer Fluid	Poly	Polypropylene/Buna	19060	



19063



19060



Waste Oil Equipment Sets, Drain Pans, Oil Drains

Sets for Wall Mounting

Recommended for draining waste oil from oil drains. Wall mounted pump set will drain filled oil drains and pump waste oil to a remote bulk waste oil holding tank. High performance diaphragm pumps drain oil drain contents in seconds. Sets include a diaphragm pump, wall mount bracket, 3/4" suction hose to connect to oil drains with 3/4" Parker quick connect couplers. Air pressure regulator. 3/4" Hose to connect to discharge site of pump and material pipe to bulk waste oil holding tank. Depending on the required volume the diaphragm pumps have a max. pump capacity of 17 or 41 gallon per minute. The pumps easily pump the waste oil over a distance with a lift capacity of vertical 15 ft. Set includes 19522 01 Mounting bracket, dim. 9x10" with 2" bung opening. Designed to hold diaphragm pumps.

19801 Set with 1/2" diaphragm pump

19802 Set with 1" diaphragm pump

19096 Hose kit only to connect diaphragm pump to oil drains. Includes Parker couplers, 6 ft. 3/4" hose



Oil Drains, Drain Pans

19778 535 Funnel, dust cover assembly, without drum

Designed for use with 16 gallon / 120 lb. open head drums. Includes telescopic funnel and tube (adjustable from 40-1/2" to 60"), float assembly to show oil level in drum, drum cover assembly. **Optional dolly shown, 17001**



19778 535



24124

24124 Plastic Drain Pan

4.5 gallons with 2 handles and spout to empty contents. Black durable polypropylene.

24128



24128 Drain Container with wheels

This portable 14 quart oil drain is ideal for the use with cars or motorcycles. Polyethylene construction with 7" drain area with removable filter. Screw on 7" lid with O-ring. Drain opening with cap and gasket, handles to carry drain. Container comes with four wheels. 18"L x 16"W x 6"H

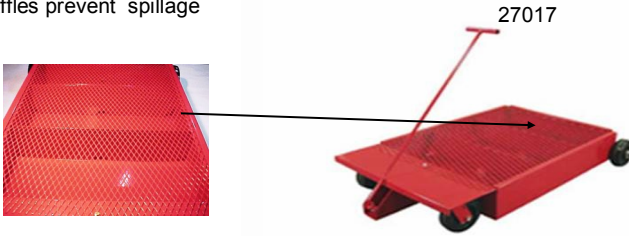
27070 Standard Model Oil Drain 18 gallon

Enamel coated steel tank with adjustable drain funnel, adjusts from 47" to 72 inches. Steel drain pan 14" diameter, 6 ft. drain hose with curved metal spout. Pressure gauge, shut off valve. Tank has four wheels, two swivel casters. Sight gauge to see tank contents, pressure relief valve. tank.



Oil Drains

Baffles prevent spillage



Electric Drain Pumps for Rolling Oil Drains

115 V electric pump set comes with power cord and 6 ft. hose. Drains filled drain at a flow rate of approximately 3 gpm. Comes with 3 ft. cord with three prong plug and 5 ft. discharge hose.

27017 050 Pump Kit for 27016 and 27017 Drain

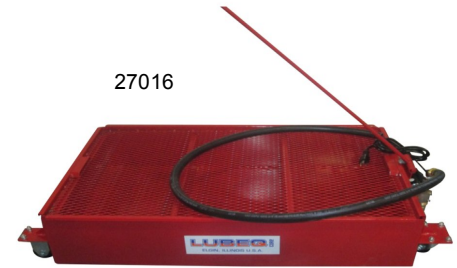


27018 Plastic, 11 gallon capacity

Oil Drain is constructed of heavy-duty polyethylene that will resist rust, dents, automotive fluids and other chemicals. The polyethylene body is translucent for easy viewing of the fluid level and it rolls easily on 4 swivel casters that are recessed into the body of the oil drain for ease of movement and protection from damage. The gravity drain valve is recessed to protect it from damage and a wire screen in the pan prevents foreign matter from entering into the reservoir. Dimensions 43" length x 27-1/2" width x 8" height.

27018 100 Set with electric pump to drain unit

27018 050 Electric Pump for 27018



Oil Drains with Air Evacuation

27074 Deluxe Model Self-Evacuating Oil Drain, 21 gallons (80 liters)

Filled oil drain is pressurized and then moved to the waste oil holding tank. Contents of oil drain is then drained with air pressure in to the holding tank. With this equipment you save installing air pressure at holding tank.

These units come with a pressure certified steel tank, shut off and safety valves, a sight gauge which shows the contents of the tank, and a large diameter drain bowl with a removable strainer. The drain bowl adjusts to different heights. Air pressure used should not exceed 40 PSI. Safety valve is preset to 30 PSI to prevent over-pressurizing the tank.

Comes with 2 sturdy plastic drain bowls. Basic bowl 15-1/2" diameter, a 21" diameter funnel for transmissions and a 14" strainer for oil filters. Drain bowl adjusts from 40" to 63" high. Tank has four 3" swivel casters of which two can be locked. To prevent the accidental damage, the sight gauge to monitor tank contents is protected by a housing. The tank has a separate valve to bleed air.



Steel Rolling Oil Drains

Best for truck maintenance shops.

Heavy duty 3/16" steel construction with baffles to prevent spillage. Wire mesh strainer covers entire unit to prevent parts from falling into drain. Unit comes with gravity drain valve.

27016 with 25 gallon capacity

wheel diameter 2 1/2" steel

27017 with 18 gallon capacity

wheel dia. 6" plastic

Sets with Electric Drain Pump

27016 100 with 25 gallon capacity

27017 100 with 18 gallon capacity

Funnels

Non – Swirl Galvanized Metal Funnels

Heavy duty galvanized steel funnels with fully wired top for added strength. Funnels come with a 70 mesh brass strainer screen, the strainer is removable on all center spout styles and soldered in place on the side spout funnels. Center spout funnels have fluted bottom to prevent swirling. Center spouts are 1" diameter, side spouts are 7/8". All spouts are grooved for air venting.

02350

Heavy Duty with wired top. 11" Diameter, 12 quarts. With straight center spout. Funnel has extra tall rim for rapid pouring without spilling.

02352 (Same as Part Number 02350)

With 8-1/2" diameter, 3 quarts. With 8" straight center spout.

02351

9" diameter, 8 quarts. This funnel has six point locking tabs that allow it to securely lock onto any sized opening for hands-free work. Has wire reinforced top rim and welded lock arms for extra durability. The non-swirl fluted base allows swift drainage. Includes brass strainer.

02353

10" diameter, 6 quarts. This funnel has an offset spout and wire reinforced top band, with brass strainer.

02354

9" diameter, 8 quarts. This rugged funnel is made from heavy-gauge galvanized sheet metal, and includes a brass strainer.

02356

12" diameter, 9 quarts. Funnel has wire reinforced top band, removable brass strainer and a center spout.

02646

6" diameter, 1 quart. Transmission funnel, with 14" x 3/4" metal flexible spout and 7/16" tip. Detachable brass strainer.



02350



02351



02353



02356



02646

Plastic Funnels

These standard-duty funnels have a straight spout with a grip tap. Made from polyethylene, resistant to oil and chemicals. Strainer not included.

02362 3" diameter 3 oz.

02364 4-7/8" diameter 12 oz.

02365 5-7/8" diameter 20 oz.

02366 8" diameter 2 quarts

02367 9" diameter 3 quarts

02365



02358 02360



02366

Funnel Assortments

02358 Three funnels, 02362, 02364 and 02365

02360 Four funnels, 02361, 02362, 02363 and 02364



02568

Waste Oil Funnel 3.4 quarts 10" diameter

02568 Plastic Drum Top Waste Oil Funnel with lid to prevent contamination. 2" plastic bung adapter, polyethylene body and cover, can be padlocked.

Extra Heavy Duty Plastic Specialty Funnels

Polyethylene funnels resistant to oil and chemicals, will not break in cold weather. Funnels come with a tall rim to avoid spilling and include a removable brass strainer for petroleum products.



02562



02372



02672

02372 6" diameter 1-1/2 quarts. Funnel with straight spout and handle.

02562 6" diameter 1-1/2 quarts. With offset spout and handle.

02672 6" diameter 1-1/2 quarts. With detachable flexible spout and short straight spout.

Oil Measures, Liquid Measures, Measuring Jugs

Galvanized Metal Measures. These sturdy measures are made from galvanized sheet metal and have a metal funnel top and spout. Fill with fluid to fill line at top of measure to ensure accurate measurements. Available with rigid metal spout.

07355 4 quarts with rigid spout



Metal One Hand Measures. These metal measures have a black painted finish, carrying handle, and are designed to allow one-handed operation. The thumb trigger provides control over fluid dispensing and the bottom-mounted spout allows for easy pouring.

07471 1 quart

07472 2 quarts

07478 8 quarts



Plastic Measures, Jugs

Made from transparent polyethylene, the body of these measures comes marked with measuring points, allowing you to estimate the level of fluid. Designed for bulk transfer of water, mild acids, or solvents pumped from larger drums or containers, these measures should not be used for precise measurement of fluids. Comes with rigid Spout and flexible spout. Measures have scale molded in body showing contents in quarts and liters.

Plastic Measure

With rigid and flexible spouts.
Flexible spout is included.

07380 1 quart

07382 2 quarts

07385 1 gallon



Plastic Jug with lid and flexible spout

Ideal to transport and store fluids.
Container made from heavy gauge polyethylene.

07394 2 quarts

07395 5 quarts



07060 100 Set of four Jugs.

Transparent polyethylene, for chemicals, water, mild acids or oil. Metric scale



10589 Graphite Powder

Fine powder for automobile locks to prevent freezing
Plastic dispenser, 1 oz., 10 per master



DEF, Urea Pumps, Flow Meters

30009 DEF Lever Pump

Pump body Stainless steel piston, SS316 PTFE plunger. For use with drums up to 55 gallons. With a telescoping suction tube. Long lever handle. 2" bung adapter. Delivery 1 pint per stroke.

30009



30018 Stainless Steel Lever Pump

Body and parts material 304 SS, zinc die cast head, wetted parts PVDF, Teflon. Max. viscosity 2000 SSU, max temp. 140F. Delivery rate approx. 10 oz. per stroke. Stroke 6 1/2 ". Self priming, zinc die cast plunger has two brass rings and O-ring for excellent priming and suction. 6 " curved detachable SS steel discharge spout. Can be used for 3/4" hose assembly. For drums up to 55 gal. Telescoping suction tube with O-ring at the connection of inner and outer tube. Includes 1 -1/2" and 2" bung adapter. Inlet 1", outlet 3/4" , overall length 51-1/4"

30018

30018 Head assembly

30062 Rotary Pump for DEF

All parts such as curved discharge spout, springs, spring rod, screws, handle shaft and suction tube are made from SS304 or SS41 material. PTFE lip seal and viton O-rings, vanes are made from Bakelite. Body has 5 1/2" diameter with a discharge capacity of 10 oz. / 1 turn. Comes with 1 1/2" and 2" bung adapter, 3 piece suction tube for drums up to 55 gal.



30075



30062

30062 056 Hose Assembly for DEF Rotary Pump

6 ft. hose and 3/8" discharge hose for pump 30062.

30062 156 DEF Rotary Pump 30062 with Hose Assembly 30062 056

30075 Lever Hand Pump for drums up to 55 gallons.

Pump has unique design for smooth and easy strokes. Designed to prevent seal leakage. Delivery approx. 1 pint / stroke. Material molded Acetyl. Pump has 2" tank adapter and expandable suction tube, max. 36" length. Limited warranty of 90 days.



30451

30451 Electric Transfer Pump 115 V AC

Pump is built with rugged plastic components. Delivery rate up to 12 gpm, 45 liters per min. Comes with 2" bung adapter, adjustable suction tube. Includes three prong power connector. Gear pump with 1" material inlet and outlet. Duty cycle 30 minutes on, 30 minutes off. Pump has built in handle with spin collar for easy installation. Automatic thermal protector and circuit breaker. Warranty 2 years. Discharge hose and nozzle is not included.



30702

30702 Control Valve for electric pumps

30451 and No 30452. Designed for Urea. 3/4" automatic shut off nozzle. Use with hose assembly No 30703.



30703

30703 Hose Assembly for DEF

Hose 3/4" diameter 12 ft. length with NPT fittings.

30255 Digital Flow Meter for DEF

Nylon digital turbine meter with 1" NPT inlet / outlet. Flow rate 3 to 30 gpm. Display type LCD with max batch of 4 digits, 4 cumulative digits. Powered by Two AAA replaceable batteries. Pressure rating 150 PSI, reads in gallons.



30255

DEF—Closed Tote Systems

30450 032 12V Closed DEF System

This set will include 12V pump, Automatic Nozzle, RSV Coupler, Tote Bracket, Hoses, and Clamps.



30450 030 115V Closed DEF System

This set will include 115V pump, Automatic Nozzle, RSV Coupler, Tote Bracket, Hoses, and Clamps.



DEF—Closed Barrel Systems

30450 014 12V Barrel Pump

This set will include 12V pump, Connecting Hardware (Clamps and Fittings), Manual Nozzle and 12 ft. Suction Hose. ADD OPTIONAL COUPLER AND BARREL



30450 013 115V Barrel Pump

This set will include 115V pump, Connecting Hardware (Clamps and Fittings), Manual Nozzle and 12 ft. Suction Hose.



We carry the complete GPI DEF line. Additional hoses, nozzles, and meters are available.

Visit our website for DEF product brochures.

30450 033 Lever Pump

Pumps 1 pint per stroke. Pump set includes hand pump, ball valve nozzle, 3/4" inlet hose, clamp kit, flexible discharge hose, adjustable barrel mounting bracket, hardware, and EPV coupler (mates to a plastic companion fitting on a drum). *Optional Stainless Steel coupler available.* Expands to fit drums up to 36" deep.



Pictured with RSV coupler 30450 053

Accessories

30450 052

EPV Coupler - Mates to plastic companion fitting in tote or drum.



30450 053

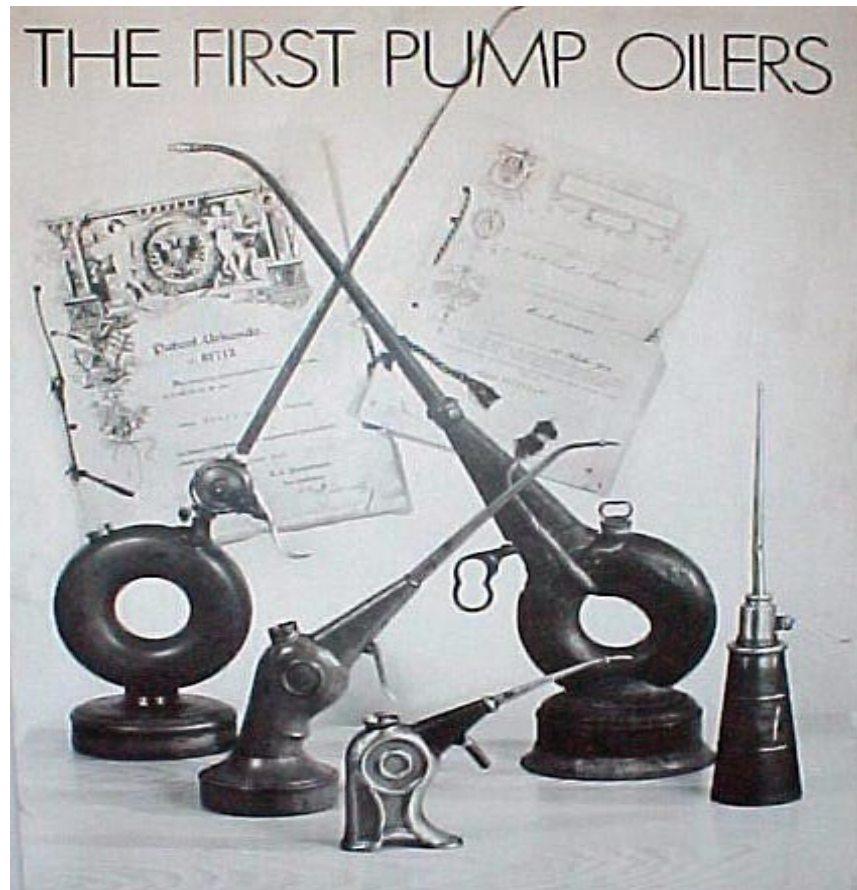
RSV Coupler - Mates to stainless steel fitting in tote and drum.



30450 051

Barrel Bracket





Manufacturer of High-Quality Lubrication Equipment

Jakob Pressl of Austria invented the first pump oilers in 1912 and received patents from the Austrian Emperor. Shown in above picture are the patent documents and pump oilers handcrafted by Jakob Pressl between 1912 and 1934.

Today the third generation of the Pressl family continues this tradition under the name LUBEQ.

The LUBEQ Corp today manufactures Grease Lubricator Sets, Oil Dispenser Sets and offers a large selection of Funnels, Grease Guns, Pumps and Waste Oil Equipment.

Approximately 32% of the products are imported. To meet our high quality standards most parts are made for us according to our specifications.

LUBEQ Corporation
1380 Gateway Drive Suite 6, Elgin, IL 60124
Telephone (847) 931-1020
Fax (847) 931-0944
LUBEQ@msn.com
www.Lubeq.com