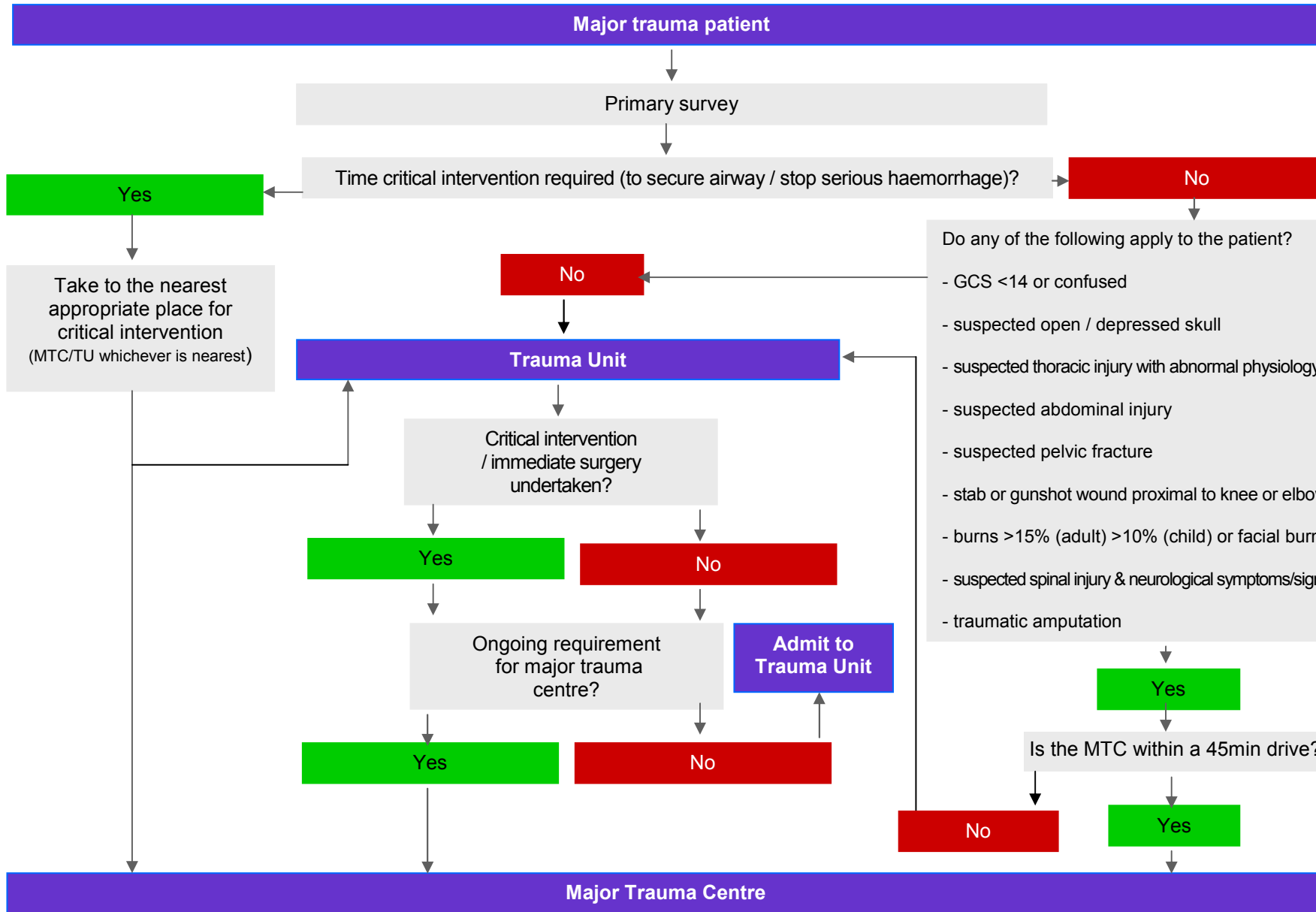


Standing Operating Procedure

Major Trauma Primary Patient Transfer



- Significant MOI:**
- Fall > 6m
 - Pedestrian or cyclist hit by vehicle
 - Death of other occupant in same vehicle
 - Major vehicular deformity or significant intrusion into passenger compartment
 - Ejection from vehicle
 - Prolonged extrication
 - Vehicular roll-over

