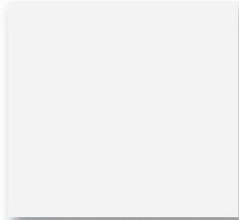


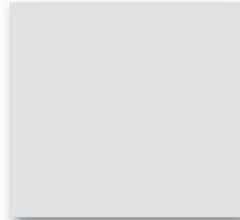


**Metal Roofing Wholesalers**  
 Toll Free 1-877-646-6382  
[www.MetalRoofingWholesalers.com](http://www.MetalRoofingWholesalers.com)

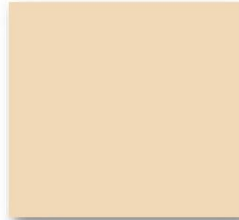
40 YEAR WARRANTY CERAM - A - STAR 1050



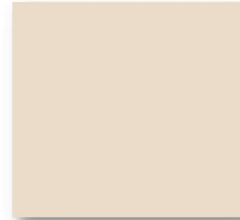
**Arctic White**  
 TSR† = 63%



**White**  
 TSR = 46%



**Ivory**  
 TSR = 58%



**Light Stone**  
 TSR = 51%



**Sahara Tan**  
 TSR = 36%



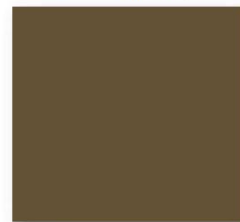
**Pearl Gray**  
 TSR = 35%



**Cocoa Brown**  
 TSR = 29%



**Burnished Slate**  
 TSR = 32%



**Light Brown**  
 TSR = 36%



**Clay**  
 TSR = 32%



**Charcoal Gray**  
 TSR = 31%



**Black**  
 TSR = 25%



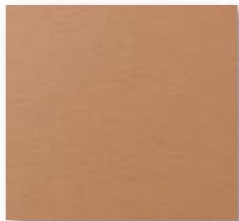
**Patriot Red**  
 TSR = 36%



**Terracotta Red**  
 TSR = 32%



**Burgundy**  
 TSR = 25%



**Copper Metallic ‡**  
 TSR = 46%



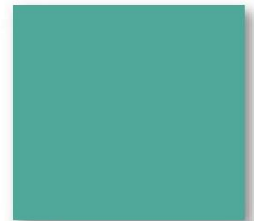
**Gallery Blue**  
 TSR = 25%



**Royal Blue**  
 TSR = 31%



**Evergreen**  
 TSR = 26%



**Marine Green**  
 TSR = 30%

**Non-Painted**



Note:  
 Not all colors come in every gauge please inquire.  
 All plant locations do not necessarily have exact color choices.



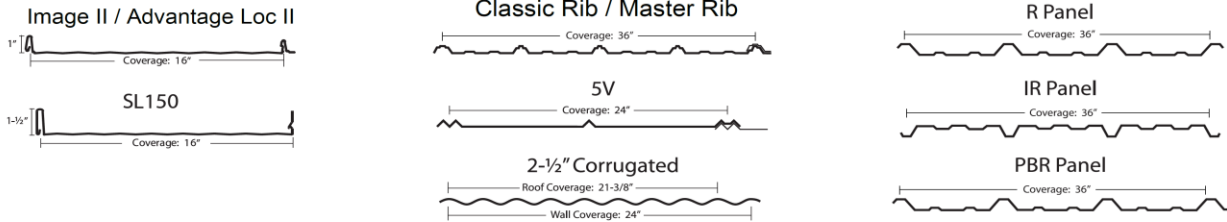
If exact color is a concern please request a color chart to be sent out postal mail prior to ordering.



**Metal Roofing Wholesalers**  
**Toll Free 1-877-646-6382**  
[www.MetalRoofingWholesalers.com](http://www.MetalRoofingWholesalers.com)

**40 YEAR WARRANTY CERAM - A - STAR 1050**

**PANEL PROFILE AND GAUGE CHART**



PANEL	GAUGE	Arctic White	Black	Burgundy	Burnished Slate	Charcoal Gray	Clay	Cocoa Brown	Copper Metallic	Evergreen	Gallery Blue	Ivory	Light Brown	Light Stone	Marine Green	Patriot Red	Pearl Gray	Royal Blue	Sahara Tan	Terracotta Red	White	Acrylic Coated Galvalume	
Advantage-Lok	26	•	•	•	•	•	•	•	•	•	•	•	•	•	•	•	•	•	•	•	•	•	•
Advantage-Lok II	26	•	•	•	•	•	•	•	•	•	•	•	•	•	•	•	•	•	•	•	•	•	•
SL150	26	•	•	•	•	•	•	•	•	•	•	•	•	•	•	•	•	•	•	•	•	•	•
MasterRib	29	•	•	•	•	•	•	•	•	•	•	•	•	•	•	•	•	•	•	•	•	•	•
MasterRib	26	•	•	•	•	•	•	•	•	•	•	•	•	•	•	•	•	•	•	•	•	•	•
ValuRib*	29				•			•			•			•			•			•			•
5V	29								•											•			•
5V	26	•			•				•	•				•	•				•			•	•
2-1/2" Corrugated	29																			•			•
2-1/2" Corrugated	26	•			•				•	•				•	•				•			•	•
R Panel	26	•		•	•	•		•		•	•	•		•	•	•	•	•	•	•	•	•	•
IR Panel	26	•		•	•	•		•		•	•	•		•	•	•	•	•	•	•	•	•	•
PBR Panel	26				•	•		•		•			•	•			•			•			•

**PERFORMANCE DATA**

COLOR	INITIAL SOLAR REFLECTANCE	3 YR. TOTAL SOLAR REFLECTANCE	INITIAL THERMAL EMITTANCE	SOLAR REFLECTANCE INDEX
Arctic White	0.65	0.63	0.87	78
Black	0.25	0.25	0.85	24
Burgundy	0.25	0.25	0.87	24
Burnished Slate	0.31	0.32	0.88	32
Charcoal Gray	0.30	0.31	0.88	31
Clay	0.33	0.32	0.87	35
Cocoa Brown	0.28	0.29	0.89	29
Copper Metallic	0.46	0.46	0.86	52
Evergreen	0.26	0.26	0.88	26
Gallery Blue	0.25	0.25	0.87	24
Ivory	0.60	0.58	0.87	71
Light Brown	0.35	0.36	0.88	38
Light Stone	0.52	0.51	0.87	60
Marine Green	0.30	0.30	0.87	31
Patriot Red	0.35	0.36	0.88	38
Pearl Gray	0.37	0.35	0.87	40
Royal Blue	0.30	0.31	0.87	31
Sahara Tan	0.36	0.36	0.87	39
Terracotta Red	0.32	0.32	0.87	33
White	0.56	0.46	0.87	66
Acrylic Coated Galvalume	0.67	0.55	0.14	56

**ENERGY STAR Requirements**

Initial Solar Reflectivity  
 Steep Slope Roofs (>2:12) ≥ 0.25  
 Low Slope Roofs (≤2:12) ≥ 0.65  
 3 Year Solar Reflectivity  
 Steep Slope Roofs (>2:12) = 0.15  
 Low Slope Roofs (≤2:12) = 0.50

**LEED 2.2 Requirements**

Solar Reflectance Index (SRI)  
 Steep Slope Roofs = ≥ 29  
 Low Slope Roofs = ≥ 78



[www.MetalRoofingForSale.com](http://www.MetalRoofingForSale.com)  
**Toll Free 1-877-646-6382**  
**Local 865-379-7777**  
**Fax 865-982-4222**