

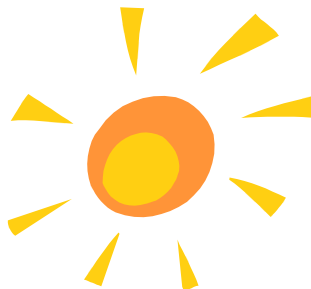


Our School Age Programs

After School Program

The After School Program offers care for students up to 8 years of age. The program begins upon arrival from school to 4:30 p.m.

When the children arrive, they will have the opportunity to enjoy their snack. They will then begin their afternoon with choices on planned activities, receiving one-on-one help with homework, and enjoying the company of their friends. Childcare is available on Professional Development Days, during school vacations, and most snow days.



Rates:

Infants:

Full Day: \$65/day

Half Day (7:30 a.m.- 11:30) or (12:30 p.m.- 4:30 p.m.) \$44/day

Toddler:

\$59/day for 5 full days (\$295/week)

\$61/day for less than 5 days

Preschool:

\$55/day for 5 full days (\$275/week)

\$57/day for less than 5 days

School-Age Programs:

After School Program:

\$33.50/day for 5 full days

\$35.50/day for less than 5 days

****A minimum of 2 days is required in all programs.**

**** All applications must be accompanied by a \$30 non-refundable school-year registration fee and a deposit in the total of your child's first week's tuition.**

Summer Program/ Full Days (School-Age):

\$56/day for 5 full days

\$58/day for less than 5 days

** Annual Registration Fee: \$20

** First week deposit required upon enrollment

HOURS OF OPERATION:

Infant- 7:30 a.m - 3:30 p.m.

Toddler/ Preschool- 7:30 a.m.- 4:30 p.m.

After School- arrival- 4:30 p.m.

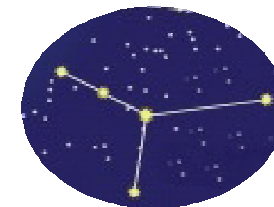
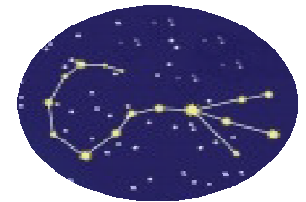


Michelle Pereira

Director/ Founder

Phone # 413- 583-2100

Michelle@tinyexplorerslearningcenter.org



658 Center St.
Ludlow, MA 01056

www.tinyexplorerslearningcenter.org

General Information

Tiny eXplorers learning center, LLC is a family owned facility. We provide care for children ages 6 weeks through 12 years. We strive in maintaining a caring and nurturing environment with a home-like feel, while receiving the best hands-on learning experience in preparation for the future. Tiny eXplorers provides families with the comfort of leaving their children in a safe and warm environment, and the peace of mind of having a security system to ensure their safety. This agency is licensed by the Commonwealth of Massachusetts, Department of Early Education and Care. We encourage an open door policy, especially to nursing mothers. Please feel free to drop in and check on your child at any time, come and have lunch with your child, or even spend the day with him/her. You are always welcome! Hours of operation: 7:30 a.m.- 4:30 p.m., Monday- Friday.

Our Philosophy

In a safe, loving, respectful environment, children have the greatest opportunity to grow and develop. Such an environment is the foundation of our programs, however, we believe it is an educator's duty to go above and beyond safety, love and respect. We as educators strive to create an environment that is fulfilling, enriching and supporting of all possible learning and growing opportunities.

Our Mission Statement

Tiny eXplorers learning center provides quality child care in a nurturing environment. Every child is unique and learns in his/ her own way. We believe that success and growth come from encouragement and praise, fostering self help skills and cooperative social interaction in a hands-on learning environment.

Our Curriculum

Tiny eXplorers learning center follows *The Creative Curriculum*. The philosophy behind our curriculum is that young children learn best by doing. Learning isn't just repeating what someone else says; it requires active thinking and experimenting to find out how things work and to learn firsthand about the world we live in. In their early years, children explore the world around them by using all their senses (touching, tasting, listening, smelling, and looking). In using real materials such as blocks and trying out their ideas, children learn about sizes, shapes and colors, and they notice relationships between things. Play provides the foundation for academic or "school" learning. It is the preparation children need before they learn highly abstract symbols such as letters (which are symbols for sounds) and numbers (which are symbols for number concepts).

Infant Classroom

Our infant program cares for children 6 weeks through 15 months. Our ratio is 1 teacher to 3 children with one additional teacher for 4 to 7 children. In this program, teachers focus on laterality (right & left sides of the body), to utilize and develop motor skills, to build language skills, and to build trust.



Toddler Classroom

Our toddler classroom cares for children 15 months to 2 years 9 months. **It might look like just child's play, but toddlers are hard at work learning important physical skills as they gain muscle control, balance, and coordination. Each new skill lets them progress to the next one, building on a foundation that leads to more complicated physical tasks, such as jumping rope, kicking a ball on the run, or turning a cartwheel.**

Preschool

Our preschool rooms are separated by age. One room ranges from 2 years 9 months- 3 years old and the other is our 4 year- 5 year olds. With our young preschoolers we expand their growth by having designated areas in the classroom such as, sensory play, arts and crafts, science and nature activities, dramatic play, small and large motor development activities, and singing and dancing, ready to stimulate their minds. They want to touch, taste, smell, hear, and test things for themselves. They learn by experiencing and by doing. Children learn from their play. They are busy developing skills, using language, and struggling to gain inner control. Our 4 and 5 year olds have added focus on reading, writing, and math skills, preparing them for the transition to Kindergarten. They will learn to understand some basic concepts such as number, size, weight, color, texture, distance, time and position. Their classification skills and reasoning ability are developing. Physical activity is encouraged in all children by offering meaningful activities that stimulate development and interest. We are able to provide children with extra attention because of our low ratio class size of 1 to 10 and 2 to 14.

