

28,000 sq.ft. For Lease

28781 Goddard Rd. 48174

Listing ID:
 Status: Active
 Property Type: Industrial For Lease
 Industrial Type: Flex Space
 Contiguous Space: 28,000 SF
 Total Available: 28,000 SF
 Lease Rate: Call
 Base Monthly Rent:
 Lease Type: Modified Gross
 Loading: 5 Docks
 Ceiling: 20 - 22 ft.
 Office SF:
 Drive-In Bays: 5 Bays



Overview/Comments

For Lease By Owner. 28,000 sq.ft. Large warehouse with 5 truck wells and 5 grade level overhead doors. Radiant heating and metal halide lighting. Gross Lease, we pay for building taxes, insurance, landscaping and snow removal.

Call Rea Construction for a tour @ 734-946-8730

Adjacent to Detroit Metropolitan Airport.



General Information

Tax ID/APN: 263960770
 Industrial Type: Flex Space
 Land Area: 25 Acres

Available Space

Suite/Unit Number:	200-204	Offices:	6
Space Available:	28,000 SF	Office SF:	4,200
Minimum Divisible:	5,600SF	Parking Spaces:	40
Maximum Contiguous:	28,000 SF	Loading Docks:	5
Space Type:	Relet	Drive In Bays:	5
Date Available:	7-1-2020	Ceiling Height:	22
Lease Rate:	Call	Clear Height:	20
Lease Type:	Modified Gross		

Area & Location

Property Located Between: Adjacent to DTW.

Highway Access:

Airports:

Building Related

Tenancy:	Multiple Tenants	Construction/Siding:	Block
Total Number of Buildings:	7	Parking Type:	Surface
Number of Stories:	1	Total Parking Spaces:	40
Office Space SF:	4,200 SF	Column Spacing:	40
Property Condition:	Good	Passenger Elevators:	0
Year Built:	1997	Freight Elevators:	0
Roof Type:	Flat	Sprinklers:	Wet

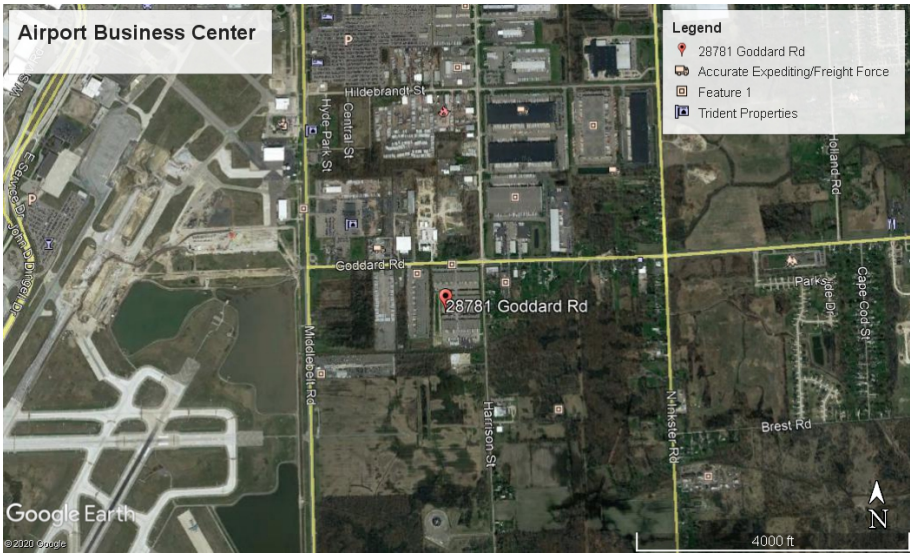
Amps:	200	Heat Source:	Radiant
Volts:	240	Lighting:	Metal Halide
X-Phase:	3	Internet Access:	Cable
Heat Type:	Natural Gas		

Land Related

Water Service:	Municipal
Sewer Type:	Municipal

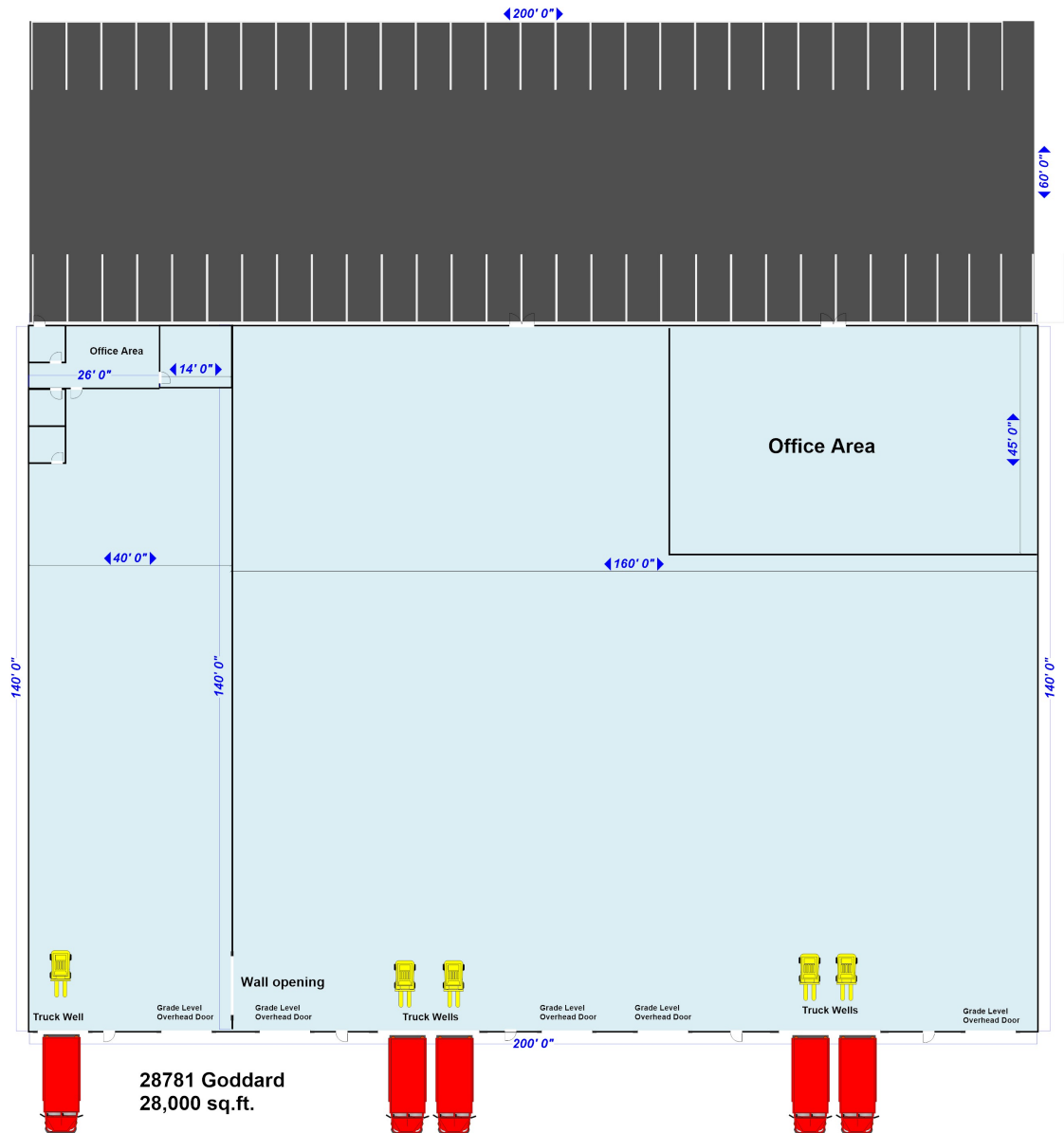
Location

Address:	28781 Goddard Rd. Romulus Mi. 48714	MSA:	Detroit-Warren-Dearborn
County:		Submarket:	Airport District

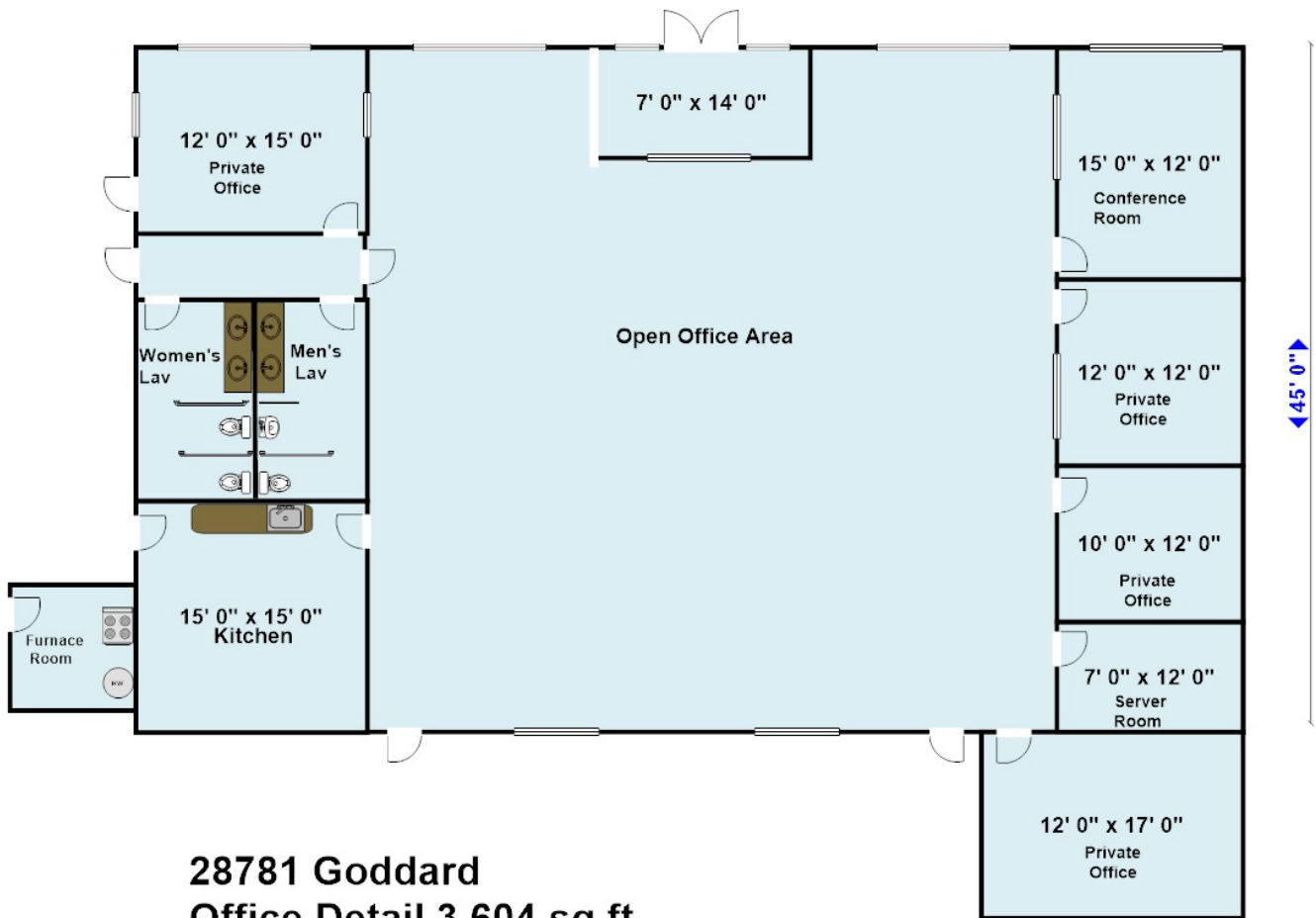


Property Images





73' 0"



28781 Goddard
Office Detail 3,604 sq.ft.

Property Contacts



Sal

Rea Construction

734-946-8730 [0]