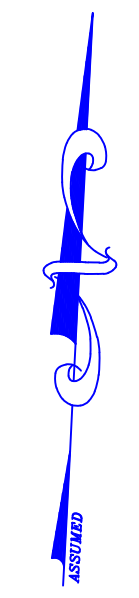
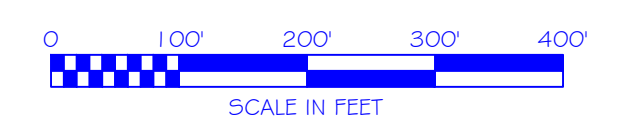
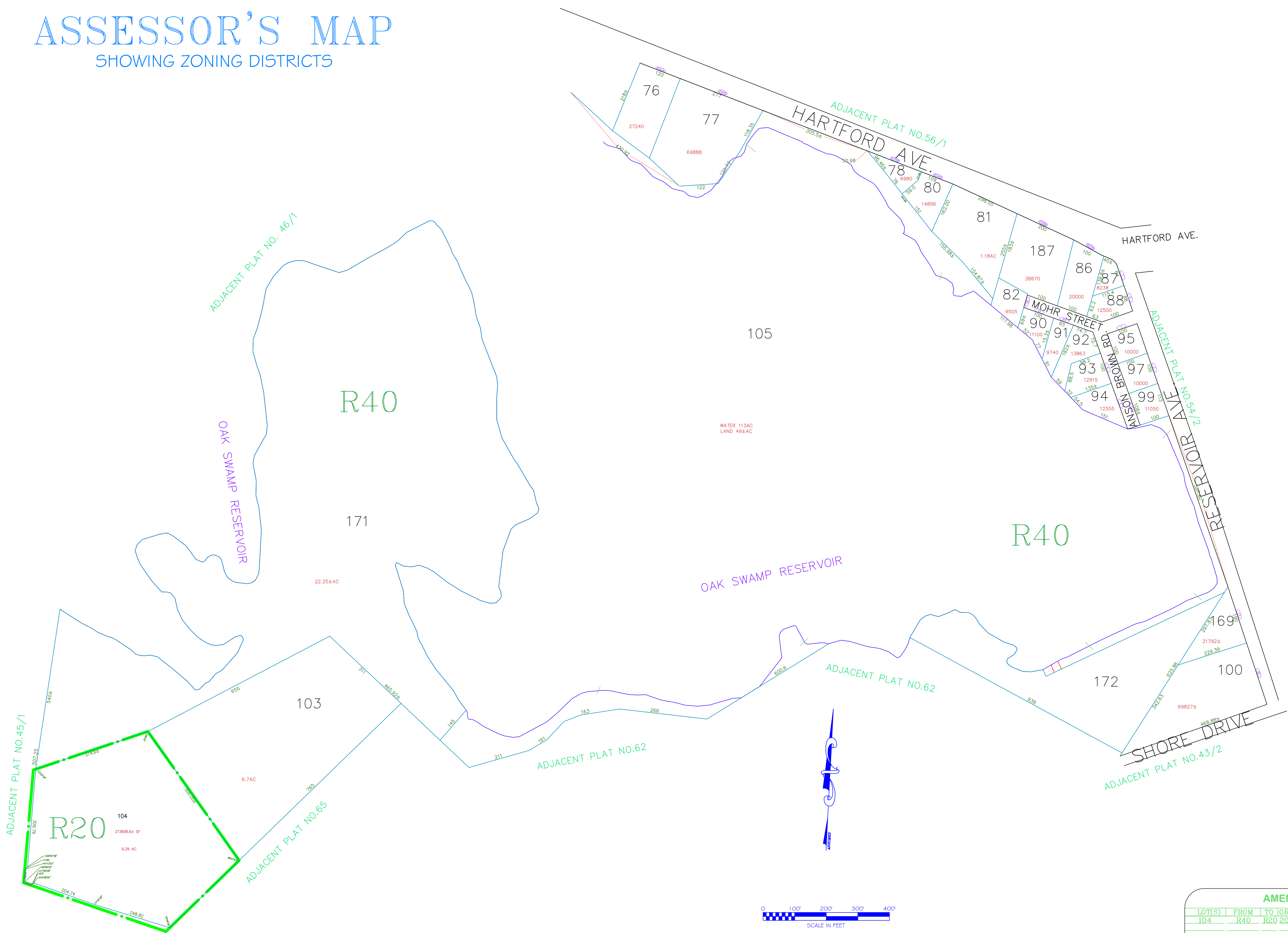


# ASSESSOR'S MAP

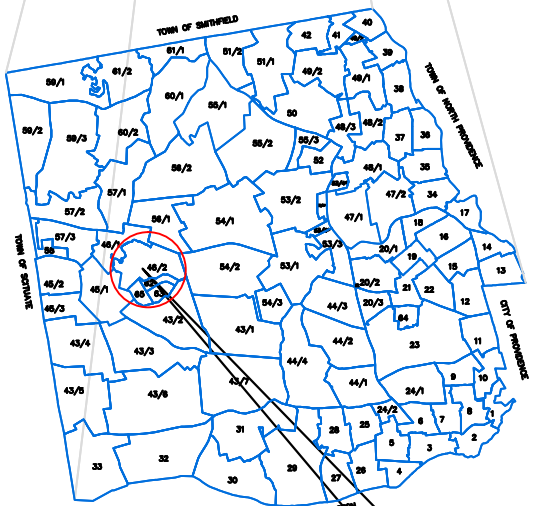
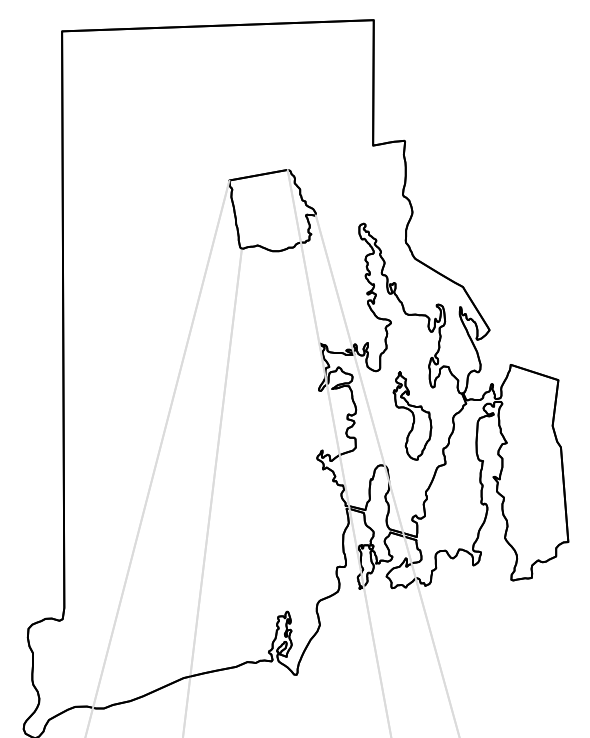
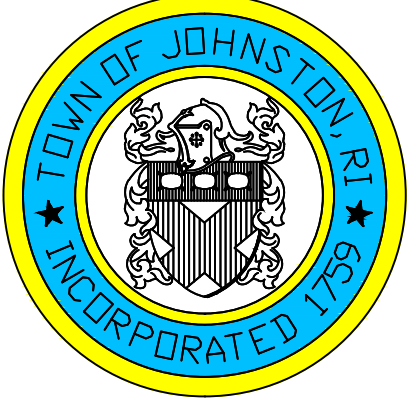
SHOWING ZONING DISTRICTS



AMENDMENTS					
LOT(S)	FROM	TO	ORDIN. #	DATE	NOTE
104	R40	R20	2008-18	1/20/09	-

Assessor's Plat Number  
**46/2**

STATE OF RHODE ISLAND  
TOWN OF JOHNSTON  
PROVIDENCE COUNTY  
INCORPORATED 1759  
ASSESSOR'S OFFICE  
1385 HARTFORD AVENUE  
JOHNSTON, RHODE ISLAND  
02919



PLAT INDEX  
AREA

Scale: 1:150  
Revised By: Benjamin Ng  
Last updated: January 04, 2016  
Date printed: January 04, 2016

For copies of plat maps, please go to the DPW at 100 Irons Avenue Johnston Rhode Island. Thank you.

NOTE: This map was prepared for the use of the Town of Johnston for assessment and illustrative purposes only. It does not represent a survey of the premises. No liability is assumed as to the sufficiency or accuracy of the data delineated hereon.