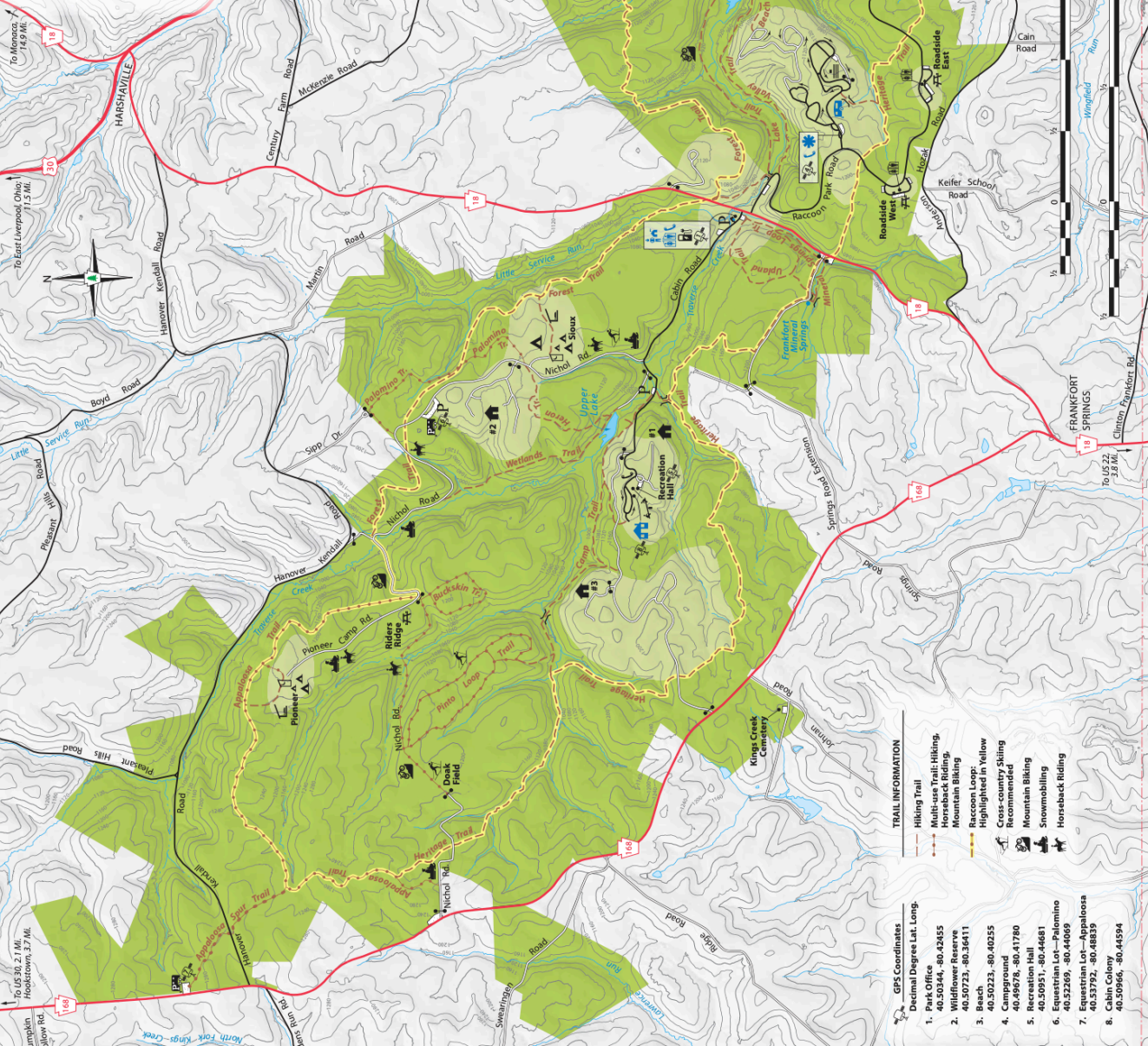


RACCOON CREEK STATE PARK

BEAVER COUNTY

- Park Office
- Contact Station
- Blue Symbols Mean ADA Accessible
- Public Phone
- Modern Restrooms
- Non-flush Restrooms
- Showers/Restrooms
- Food Concession
- Picnicking
- Amphitheater
- Interpretive Center
- Swimming Beach
- Boat Rental
- Boat Launch & Mooring
- Ice Skating
- Playground
- Modern Cabins
- RV and Tent Camping
- Organized Group
- Tent Camping
- Organized Group tenting
- State Park Lake
- Backpacking Shelter; Reservation Required
- Hunting Early Goose
- Season Only
- Archery/Block Hunting ONLY
- Electric Vehicle Charging Station
- Gate
- Unpaved Road
- One-way Road
- State Park No Hunting
- State Park Hunting
- Cabin Camps

CONTOURS ARE ON 40-FOOT INTERVALS



TRAIL INFORMATION

- Hiking Trail
- Multi-use Trail-Hiking, Horseback Riding, Mountain Biking
- Cross-country Skiing Recommended
- Mountain Biking
- Snowmobiling
- Horseback Riding

GPS Coordinates

1. Park Office: 40.50344, -80.42455
2. Wildflower Reserve: 40.50223, -80.36411
3. Beach: 40.50223, -80.40235
4. Recreation Hall: 40.46678, -80.41780
5. Equestrian Lot—Palomino: 40.50951, -80.44681
6. Equestrian Lot—Appaloosa: 40.52269, -80.44069
7. Cabin Colony: 40.53792, -80.48839
8. Cabin Colony: 40.50966, -80.44594