



The Future of Space

A proposed presentation by
KSF Space



*This document transmitted with confidential
and intended solely for the use of the individual or
entity to whom they are addressed*

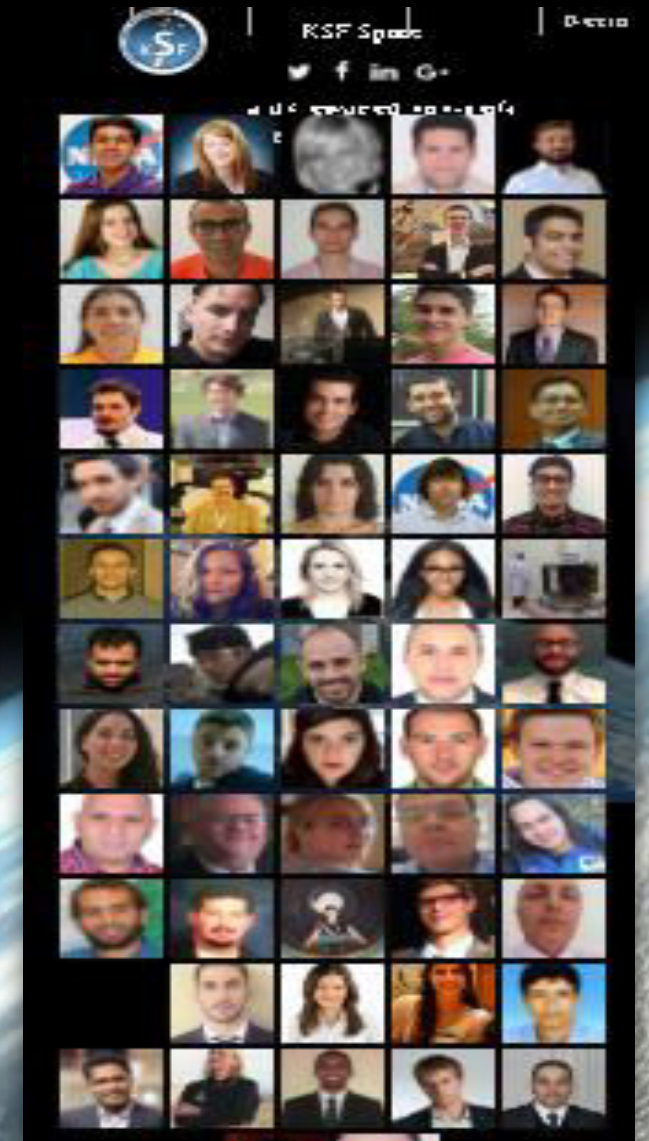


About KSF

A not for profit foundation registered in the U.K # 10176163, the KSF Space Foundation or (KSF) was initially founded to enable cost-efficient access to low earth orbit (LEO) with zero-environmental impact flying solutions.

- ✓ The foundation encourage universities to develop R&D missions using small satellites and micro-satellites, where small satellites become one of the most important role in developing future scientific space missions.
- ✓ The foundation steered by officers and members from major space agencies and industries like NASA,ESA,JAXA,SpaceX...etc.

More about KSF activities www.ksf.space





About KSF

The foundation steered by officers and members from major space agencies and industries like NASA, ESA, JAXA, SpaceX...etc

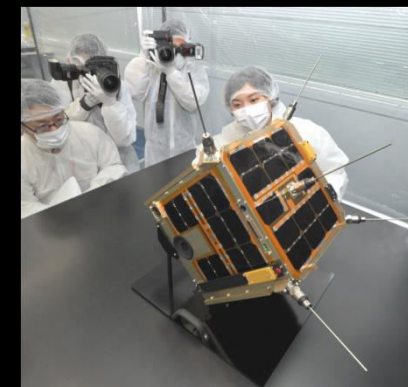




Small Satellite Fabrication Consulting Service

The international, technical committee at KSF Space Foundation (KSF), comprising of experienced professional engineers, researchers, scientists and subject matter experts, can assist and work with you on your next space mission (see members page).

KSF currently holds numerous, signed agreements with key industry and academic stakeholders from across the nano-satellite community. KSF can assist your next space mission by matching the most suitable services in the market with your mission's needs. Contact us and let us know what your next space mission is all about, and we'll provide you with exemplar technical expertise.





KSF Space Foundation Experimentation Opportunity Program

Some institutions cannot easily afford the costs of developing, manufacturing, and launching their own space mission, particularly in developing countries.

Here at KSF we have developed a special program entitled 'Experimentation Opportunity Program'. This program is dedicated to enabling institutions in developing countries realise their own space mission aspirations. The scope of the program allows institutions from developing countries to collaborate and participate with other institutions that are currently working and developing their own missions.

Our funding committee is happy to discuss with you potential opportunities and likely costs, with our advice tailored to your research and mission needs



Launch Service

At the KSF Space Foundation, we can source and manage ride share opportunities with a network of international launch providers. We can help institutions launch their own experiments; with affordable pricing below normal market rates from LEO 160 KM, 310 KM, 550 KM, 600 KM & 700 KM to 2000 KM above ISS and to GEO





KSF Space Reachable to ISS for R&D Experimentation

MEO + 2000 KM



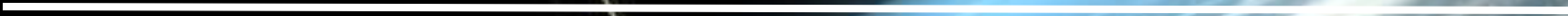
700 KM



400 KM



LEO from 160 KM

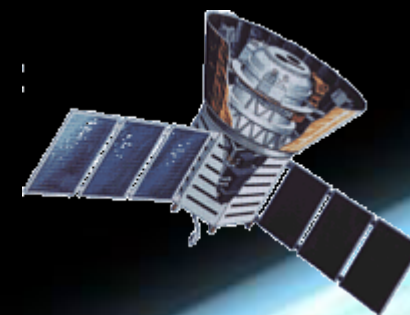


ISS



Affordable Services for Academic R&D Projects

- ✓ Building, integration, zero gravity testing environment and launch opportunities for Nanosatellite "CubeSat"
- ✓ Support your academic activities on building your own Ground Station for R&D and receive live signals & images from active on orbit weather and climate major satellites
- ✓ Provide support and training on building Ground Station to track current Nanosatellites or Cubesats on LEO orbit





Affordable Services for Academic R&D Projects

- ✓ We send your biological scientific experiments to Space on ISS
- ✓ Broadcasting chances with the International Space Station (ISS) on orbit crew for universities & colleges students world-wide "through KSF Space's partner"
- ✓ Training Courses available on GPS, GS, Building NanoSat...etc (Training Catalog available)





Experiments

KSF is currently offering access to near-space and LEO to GEO for research and scientific experiments in the fields of:

- ✓ Earth or Space observation
- ✓ Biological testing
- ✓ Satellite positioning detection
- ✓ Earth magnetic field measurement
- ✓ Radio Transmissions
- ✓ Atmospheric Science
- ✓ Technology experiment
- ✓ Ecological Sciences
- ✓ Testing of hardware and software of micro and nano-technology






The world's FIRST "NEP" Nanosatellite Engineering Professional Certification

The NEP Certification pathway will address aerospace engineers and experts and will be recognized by major space companies, organizations, foundations and agencies. Some of the industries will work with KSF Space to review the content of the course material and accredit the certificate by recognizing NEP Certification as world's first and only nanosatellite engineering professional course.



SatMagazine



GO WITH CERTAINTY.
WEATHER EVERY OPPORTUNITY.



KSF Space



a U.K. registered non-profit organization



BEGINNINGS

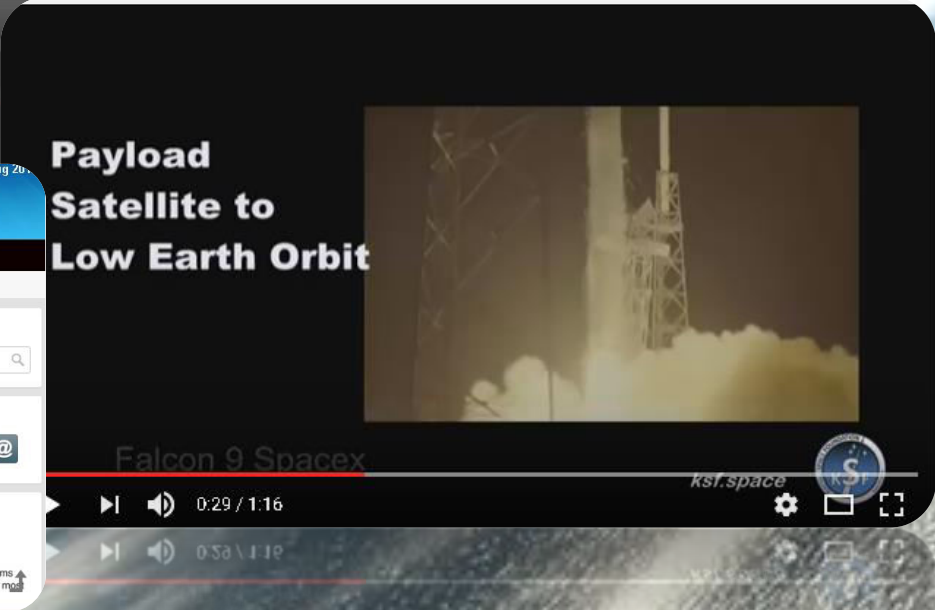
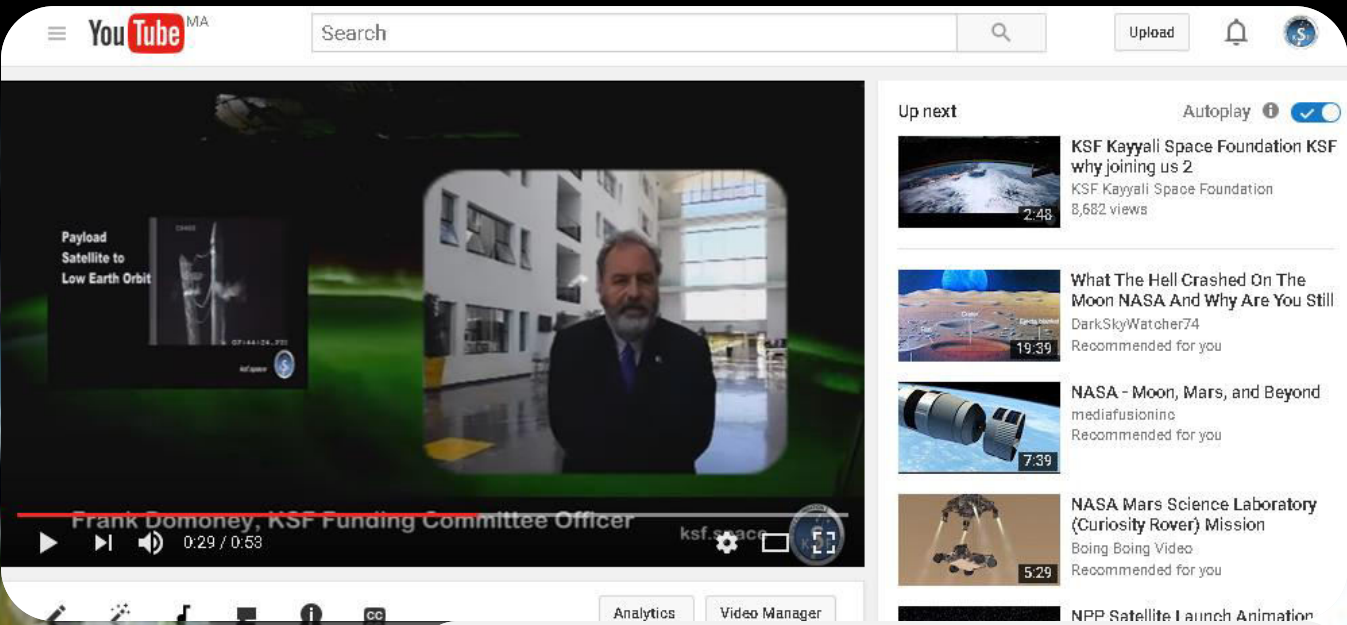


Time Business News

BEGINNINGS



More about us , visit
www.Ksf.space
follow us on our
YouTube channel & social medias





www.Ksf.space

USA Office Tel.: 001 775-372-9161

*This document transmitted with confidential
and intended solely for the use of the
individual or entity to whom they are
addressed*