



**16100 KW EXTRACTION CONDENSING STEAM TURBINE GENERATOR SET**

**STEAM TURBINE:**

Manufacturer: Mitsubishi  
Type: Extraction Condensing model 7EL-9  
Rating: 16100 kw  
Inlet steam: 875 psig/750 °F  
Maximum inlet steam flow: 200,000 lbs/hr  
Extraction steam:  
Auto extraction 440 psig 0 –100,000 lbs/hr  
Exhaust steam: 2" HgA  
Maximum Exhaust steam flow: 150,000 lbs/hr  
Steam rate at zero extraction  
16100 kw 9.32 lbs/kwh  
Number of stages: 9  
Inlet steam size: 8" 1500 # side  
Extraction steam 8"  
Exhaust steam: down  
Speed: 6207 rpm  
Rotation: CCW from governor end

**GEAR REDUCER:**

Manufacturer: SEISA  
Rating: 17000 KW  
Speed ratio: 6207/1800 rpm

**GENERATOR:**

Manufacture/Type: General Electric  
Rating: 21890 kva, 13800 v, 3 phase, 60 hz  
Amps: 916  
PF: 0.85  
Exciter: Brushless PMG  
Speed: 1800 RPM

**CONDENSER:**

Manufacturer: Yamashina  
Surface area: 21420 sq. ft.

**SCOPE OF SUPPLY**

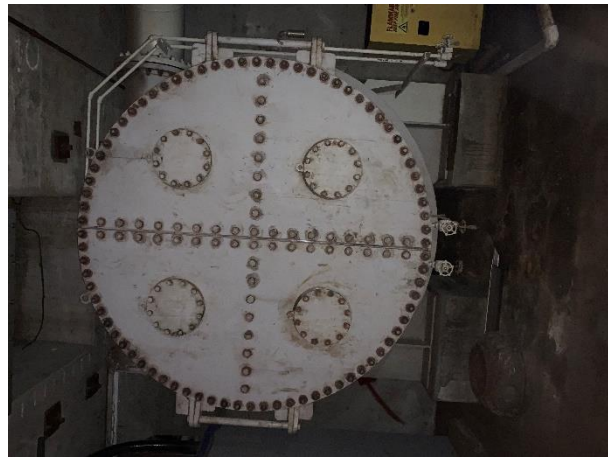
Steam Turbine complete  
Generator with brushless exciter  
Inlet stop valve, extraction NRV  
Lube oil system  
Gland steam condenser  
Condenser  
Condensate extraction pumps with motor  
Air ejector

NSV Energy LLC  
35 Hickory Springs Industrial Drive  
Canton GA 30115

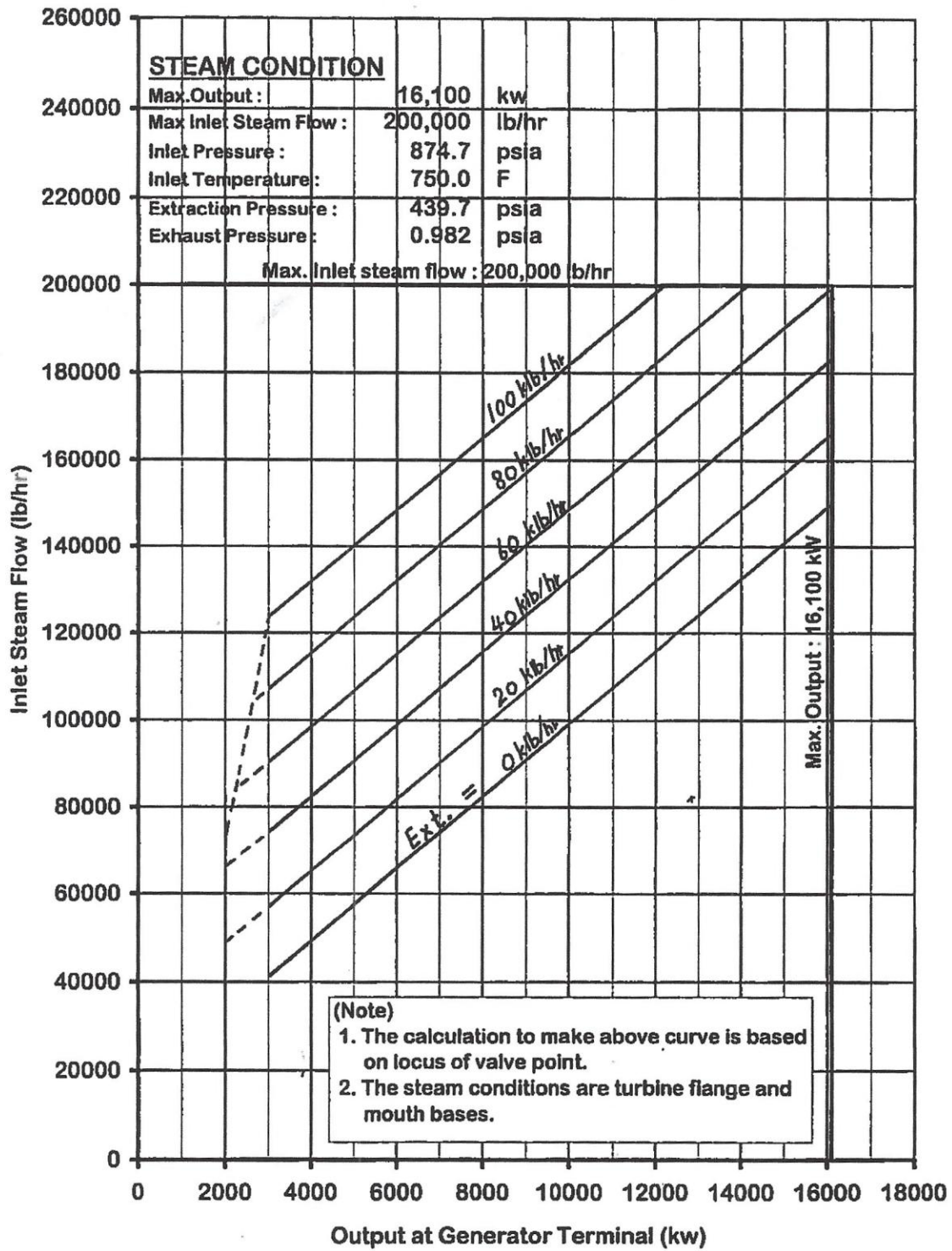


**HISTORY:**

Year manufactured: 1999  
Year shutdown 2017



**Extraction Condensing Turbine  
Expected Performance Curve**



(N25-101 Rev.0)