

Rabbit Anti-Villin [EP163]: RM0194

Intended Use: For Research Use Only

Description: Villin is a 95 kD glycoprotein of microvilli associated with rootlet formation in gastrointestinal mucosal epithelium. Anti-villin labels the brush border area in the gastrointestinal mucosal epithelium. This antibody has been useful in differentiating gastrointestinal adenocarcinoma, neuroendocrine carcinomas, and ovarian adenocarcinomas from adenocarcinomas of other organs. This antibody also labels Merkel cells of the skin.

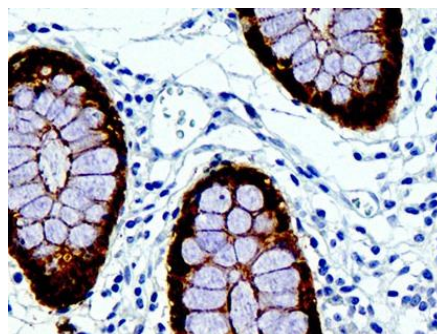
Specifications

Clone: EP163
Source: Rabbit
Isotype: IgG
Reactivity: Human
Localization: Membrane, cytoplasm
Formulation: Tissue culture supernatant in PBS pH7.5, containing 0.2% BSA, 15mM sodium azide (NaN3)
Storage: Store at 2°- 8°C. For longer periods of storage, store at -20°C. Avoid repeat freeze-thaw cycles
Applications: IHC
Package:

Description	Catalog No.	Size
Villin Concentrated	RM0194	1 ml

IHC Procedure

Positive Control Tissue: Colon
Concentrated Dilution: 50-200
Pretreatment: Citrate pH6.0 or EDTA pH8.0, 15 minutes using Pressure Cooker, or 30-60 minutes using water bath at 95°-99°C
Incubation Time and Temp: 30-60 minutes @ RT
Detection: Refer to the detection system manual
* Result should be confirmed by an established diagnostic procedure.



FFPE human colon stained with anti-Villin using DAB

Doc. 100-RM0194
Rev. A