

Horizontal Concealed Ultra Thin Fan Coil Unit

Product Info

Category: Horizontal Concealed Ultra Thin

Products: 5FCHU02, 5FCHU03, 5FCHU04, 5FCHU06



* Available in 2-pipe and 4-pipe configurations

Specifications

	5FCHU02	5FCHU03	5FCHU04	5FCHU06
Air Flow High	180	250	390	500
Air Flow Med.	130	200	290	360
Air Flow Low	100	150	230	280
Cooling Capacity High	4,900	6,900	12,000	15,300
Cooling Capacity Med.	4,400	6,200	10,700	14,000

Cooling Capacity Low	3,900	5,600	9,700	12,700
Heating Capacity High	8,300	11,400	19,600	24,900
Heating Capacity Med.	7,100	9,800	15,000	21,500
Heating Capacity Low	6,100	8,400	12,200	17,700
Voltage	115	115	115	115
Sound Level High (NC rating)	32	34	37	39
Sound Level Med. (NC rating)	25	26	28	33
Sound Level Low (NC rating)	21	22	23	26
Width	30"	30"	41.75"	45.25"
Height	8"	8"	8"	8"
Depth	18.625"	18.625"	18.625"	18.625"

877-ICE-AIR-1

© 2016 Ice Air. All rights reserved.



Quiet Comfort – Incredible Value

Horizontal Concealed Ultra Thin

Ice Air's family of Fan Coil Units (FCUs) **provides superior whisper quiet, energy efficient performance.** And, they are guaranteed to lower your installation and operating costs on your next new construction, retrofit or renovation project. They are available in a variety of coil configurations to offer heating, cooling or both to a variety of spaces. Our FCUs can be installed in the ceiling (Horizontal Concealed and Horizontal Concealed–Ultra Thin), exist as freestanding cabinet units (Vertical Exposed), mounted inside walls (Vertical Concealed), or furred into walls (Hi Rise).

Our versatile FCUs are ideal for high-volume users like:

- Residential buildings
- Medical facilities
- Hotels/Motels
- Office buildings & more

Fan Coil Units are a simple and easy cooling and heating solution that fits – providing reliable performance, high efficiency, ease of operation, low cost, easy installation, quiet comfort and a variety of customized options.

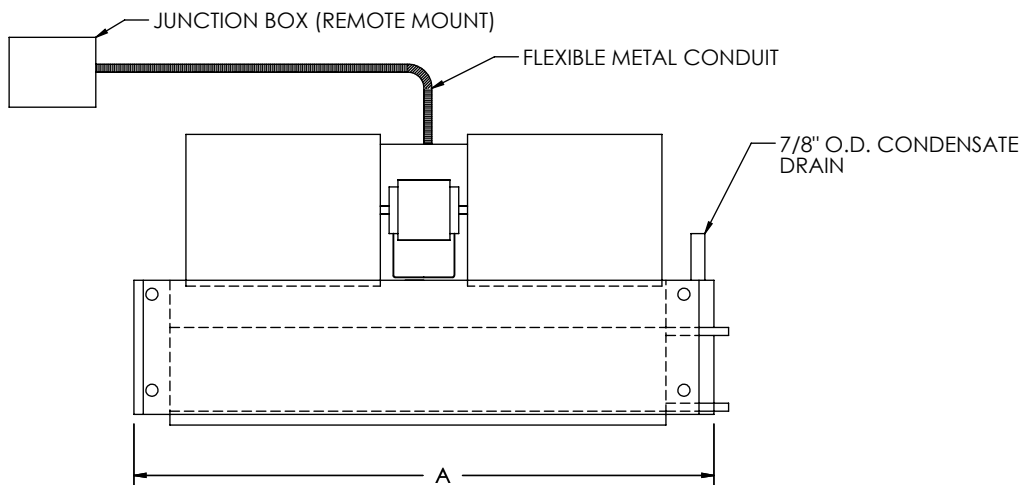
The Ice Air Fan Coil Unit Variety:

- Horizontal Concealed – Ultra Thin
- Horizontal Concealed
- Vertical Exposed
- Vertical Concealed
- Hi Rise

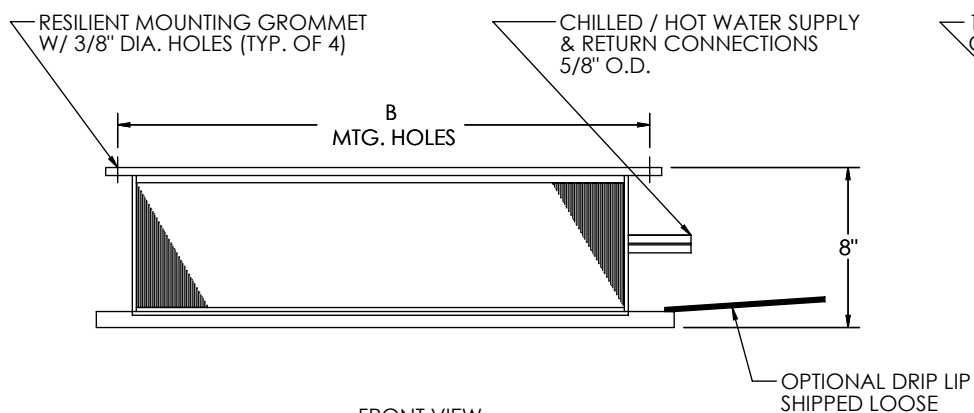
MODEL		5FCHU02	5FCHU03	5FCHU04	5FCHU06
Air Flow (CFM)	High	180	250	390	500
	Med	130	200	290	360
	Low	100	150	230	280
Cooling Capacity (BTU)	High	4900	6900	12000	15300
	Med	4400	6200	10700	14000
	Low	3900	5600	9700	12700
Heating Capacity (BTU)	High	8300	11400	19600	24900
	Med	7100	9800	15000	21500
	Low	6100	8400	12200	17700
Dimension	Width	30"	30"	41-3/4"	45-1/4"
	Height	8"	8"	8"	8"
	Depth	18-5/8"	18-5/8"	18-5/8"	18-5/8"

Fan	Type Number	Double Inlet Forward Curve			
		1	2	2	2
Motor	Voltage/HZ	115V/60Hz			
Coil	Type	Aluminum Fin and Copper Tube			
Piping Connection	Inlet/Outlet Condensate	1/2" 5/8"			
Cooling		80°F DB, 45°F Entering Water, 10°F Temperature differential			
Heating		70°F DB, 180°F Entering Water			

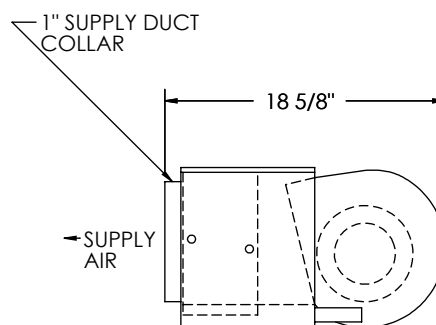
Contact Ice Air today at **1-877 ICE-AIR-1** or visit **www.ice-air.com** to learn more!



TOP VIEW



FRONT VIEW

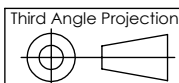


RIGHT SIDE VIEW

Ice-Air Thin Type Horizontal Concealed Fan Coil Unit					
Model		FCHCU02	FCHCU03	FCHCU04	FCHCU06
Dimensions	A	30	30	41 3/4	45 3/4
	B	18 3/4	22	33 3/4	36 1/8

NOTES.

1. RH SHOWN, LH - OPPOSITE.
2. ALL DIMENSIONS ARE $\pm 1/4$.
3. PRODUCT SPECIFICATIONS ARE SUBJECT TO CHANGE WITHOUT NOTICE.
4. DRIP LIP RECOMMENDED.



PROPRIETARY AND CONFIDENTIAL
THIS DRAWING IS PROPERTY OF
ICE-AIR, LLC. IT MAY NOT BE
REPRODUCED, DUPLICATED OR
OTHERWISE COPIED WITHOUT
PRIOR WRITTEN AUTHORIZATION.

MATERIAL:

WEIGHT (LBS):

FINISH:

UNLESS OTHERWISE SPECIFIED:
DIMENSIONS ARE IN INCHES
TOLERANCES:
FRACTIONAL $\pm 1/32$
ANGULAR: MACH \pm ° BEND ± 1 °
TWO PLACE DECIMAL $\pm .03$
THREE PLACE DECIMAL $\pm .015$

ICE-AIR LLC.
80 HARTFORD AVENUE
MOUNT VERNON, NY 10553

TITLE: THIN TYPE HORIZONTAL CONCEALED FAN COIL UNIT

MODEL BY: DATE: DWG. NO.
DRAWING BY: VP DATE: 01/19/09 SAA-9002

SIZE
A

SCALE: NONE
DO NOT SCALE DRAWING

SHEET 1 OF 1

REV
C