

Service A: Screen Up Position [PG3](#)

Motor Replacment

Instructions

Service B: Screen Down Position [PG21](#)

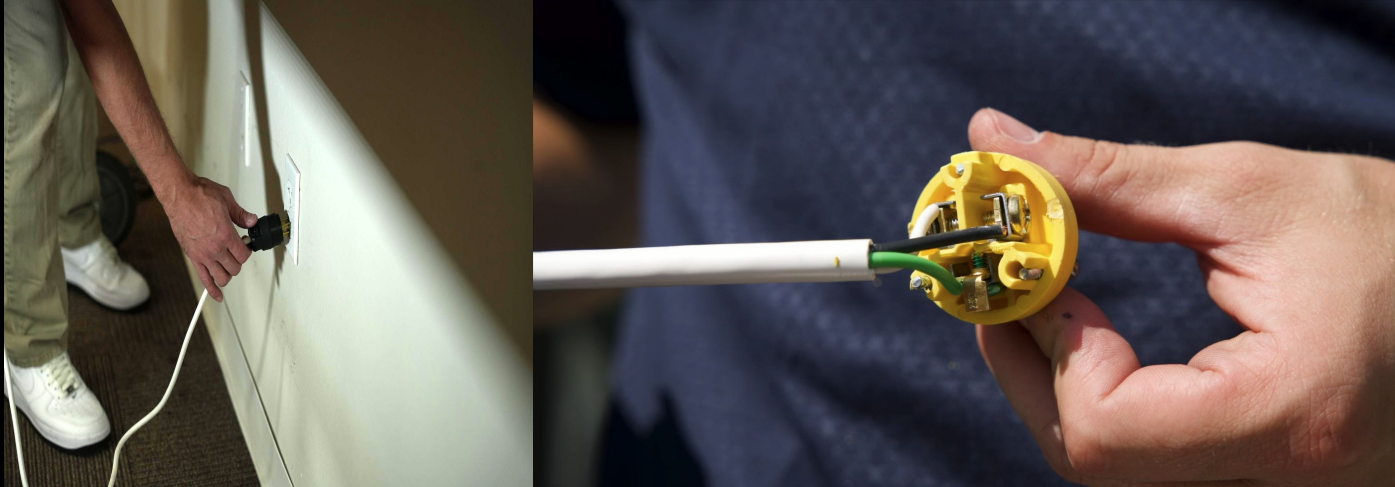
PRE-INSTALLATION CHECKLIST:

- Tool & Material Requirements Supplied By The User:
 - Power Drill
 - T25 Torx Bit
 - Long Nose Pliers
 - Phillips and Slotted Screwdriver
 - Soft Mallet
 - Level
 - Ladders and Saw Horses
 - Phillips Head Bit
 - Appropriate fasteners to attach the screen to the structure. Fasteners must provide 1.5" or more embedment into the substrate.
- People:
 - Two (2) or more people a required to install the screen



Service A: Screen Up Position





Remove plug - Disconnect electrical wires from plug



Remove housing cover using T-25 Torx bit





Remove track cover with small pry bar and pull straight out (outside mount only)



Remove tracks



Remove motor clip with pliers



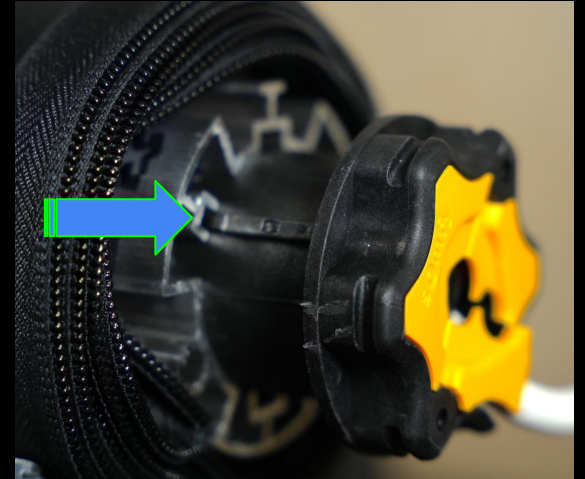
Remove roll tube with pry bar/flathead screwdriver, motor side first

Be sure to support bottom bar with roll tube as you remove it. (Assistance required for safety)





Guide electrical wire through housing



Slide defective motor out and replace with new one.

Make sure motor guides seat fully into tube



Reinstall electrical, roll tube, and tracks.





Reinstall housing using T-25 Torx bit





Wake up and reprogram motor (Pages 26-31)

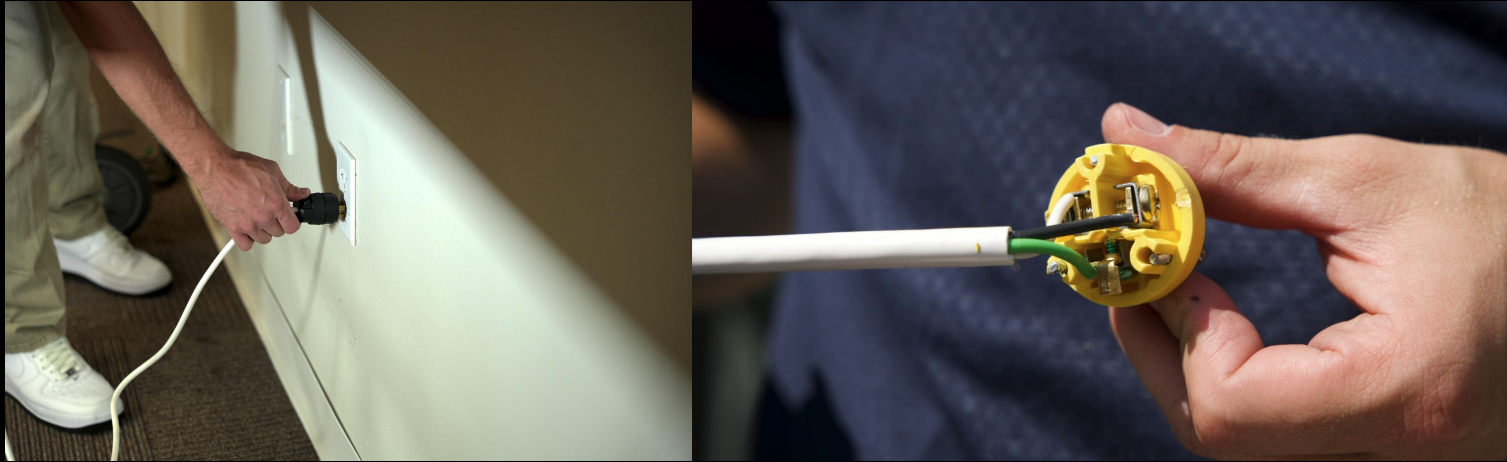
Service B: Screen Down Position





Remove housing cover with T-25 Torx bit





Remove plug - Disconnect electrical wires from plug



Remove motor clip with pliers



Remove roll tube with pry bar/Flat head screwdriver, motor side first

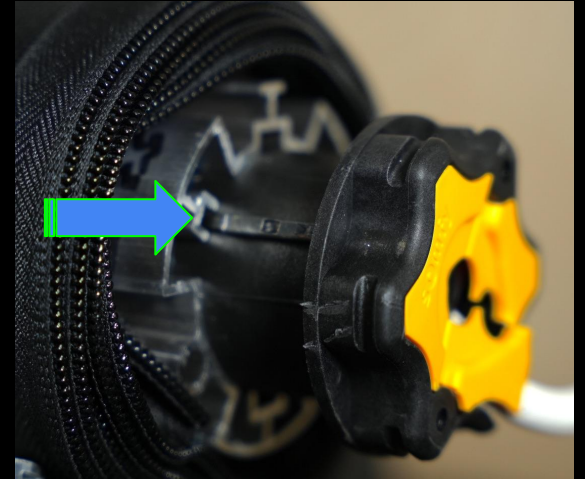
Be sure to support roll tube as you remove it. If possible rest roll tube on top of ladders (Assistance required for safety)



Guide electrical wire through housing



Re-attach motor clip to motorside housing



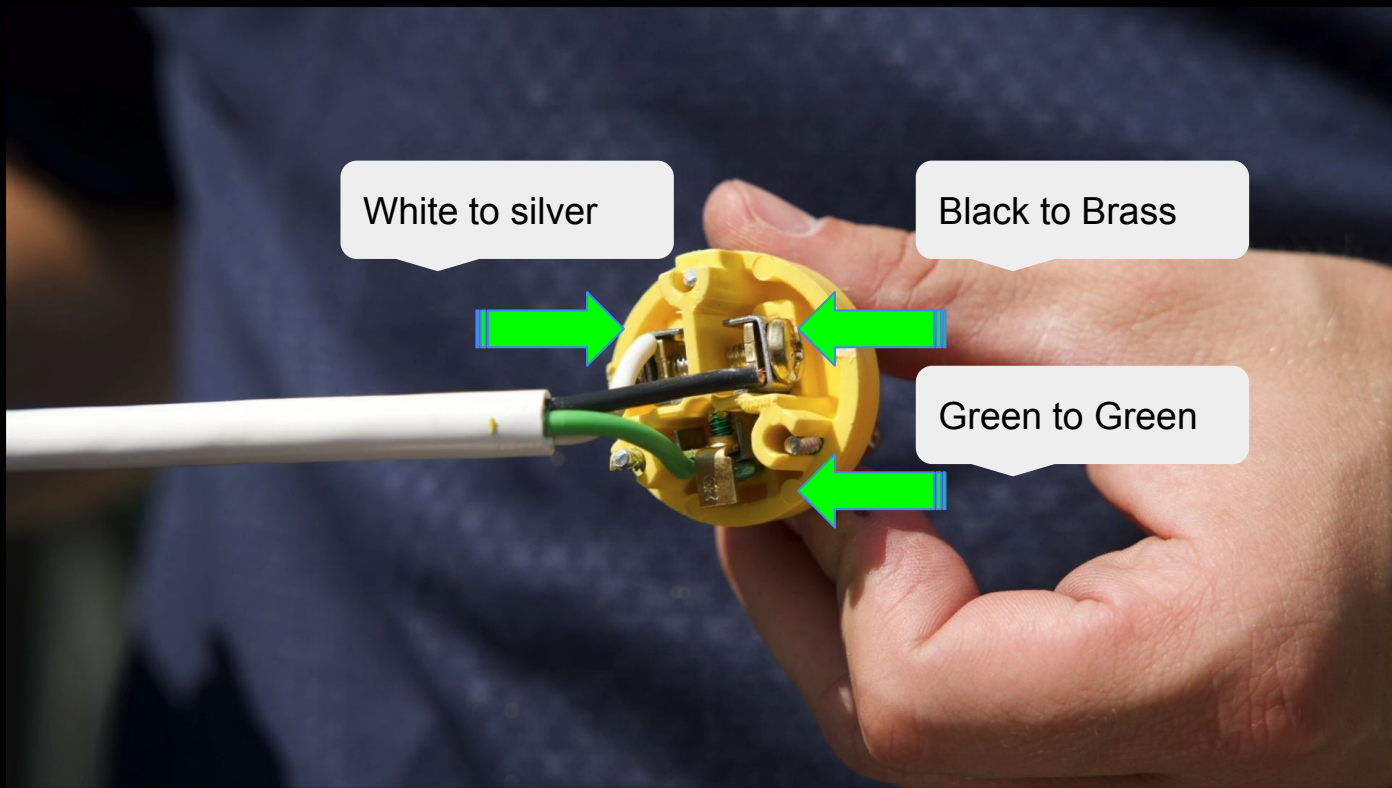
Slide defective motor out and replace with new one.

Make sure motor guides seat fully into roll tube



Reinstall roll tube with pry bar/flat head screwdriver





Install grommet on cord and connect electrical connections to proper screws

Reconnect electrical



Wake up and reprogram motor. (pages 32-37)



Plug unit in and Wake up motor by **pressing and holding the up & down buttons till the motor jogs**



Check for correct screen rotation - Press and hold "MY" button till unit jogs to change rotation



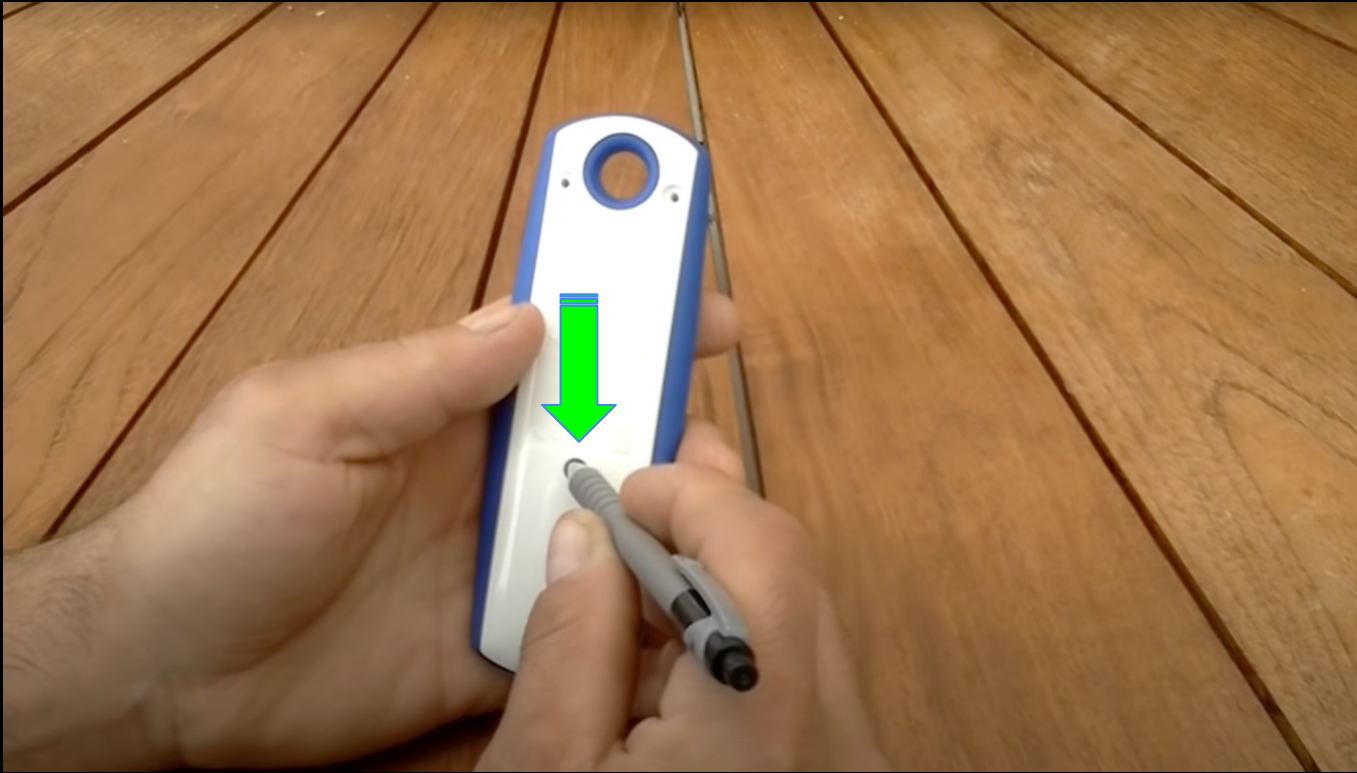
Set upper screen limit by pressing down and "MY" button - Screen lowers



Set lower screen limit by pressing UP and "My" - Screen raises



Stop screen roughly waist height. **Press and hold "MY" till screen jogs**



Briefly **press the "Programming" button** on back side of remote - Screen jogs

Motor Replacment

Instructions