

Mouse Anti-ERCC6/CSB [D7]: MC0131, MC0131RTU7

Intended Use: For Research Use Only

Description: DNA excision repair protein ERCC6, also known as Cockayne syndrome protein (CSB), is encoded by the ERCC6 gene in human. ERCC6 is the homolog of the yeast Rad26 protein. ERCC6 belongs in the SWI/SNF family of proteins as it contains helicase motifs and ATPase activity. It is a part of a complex that contains RNA pol I, TFIIH, and XPG, all of which are active in transcription and/or DNA repair. Hence, it is an essential factor involved in transcription-coupled nucleotide excision repair, which allows RNA polymerase II-blocking lesions to be rapidly removed from the transcribed strand of active genes. Upon DNA-binding, it locally modifies DNA conformation by wrapping the DNA around itself, thereby modifying the interface between stalled RNA polymerase II and DNA. It is shown to be essential for transcription-coupled repair complex formation. It recruits the CSA complex (ERCC8 complex), nucleotide excision repair proteins and EP300 to the sites of RNA polymerase II-blocking lesions. Mutations in CSB gene are known to cause age related macular degeneration and Cockayne syndrome B that is characterized by delayed neural development and severe progressive neurologic degeneration and mental retardation.

Specifications

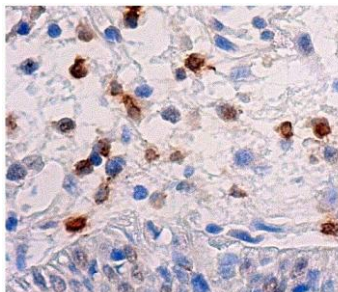
Clone: D7
 Source: Mouse
 Isotype: IgG1k
 Reactivity: Human
 Immunogen: Human ERCC6 aa 1-300
 Localization: Cytoplasm
 Formulation: Antibody in PBS pH7.4, containing BSA and ≤ 0.09% sodium azide (NaN3)
 Storage: Store at 2°- 8°C
 Applications: IHC, ELISA, IF, IP, WB
 Package:

Description	Catalog No.	Size
ERCC6/CSB Concentrated	MC0131	1 ml
ERCC6/CSB Prediluted	MC0131RTU7	7 ml

IHC Procedure*

Positive Control Tissue: Kidney
 Concentrated Dilution: 50-200
 Pretreatment: Tris EDTA pH9.0, 15 minutes using Pressure Cooker, or 30-60 minutes using water bath at 95°-99°C
 Incubation Time and Temp: 30-60 minutes @ RT
 Detection: Refer to the detection system manual

* Result should be confirmed by an established diagnostic procedure.



FFPE human oral mucosa tissue stained with anti-ERCC6 using DAB

References:

1. A unique subset of epithelial ovarian cancers with platinum sensitivity and PARP inhibitor resistance. Raphael Ceccaldi, et al., Cancer Res. Feb 15;75(4):628-34, 2015.

Doc. 100-MC0131
Rev. A