

Learning How to Work Together and Create Identity Profiles

Identity Profiles transform the way we read our Bibles. It is an important skill *Explorers of Biblical Heritages* develop as they explore together. *Exploring Biblical Heritages* is a team activity. We use guidelines and models to successfully achieve our goals. This requires people to work together and that begins with each explorer agreeing to follow this guideline.

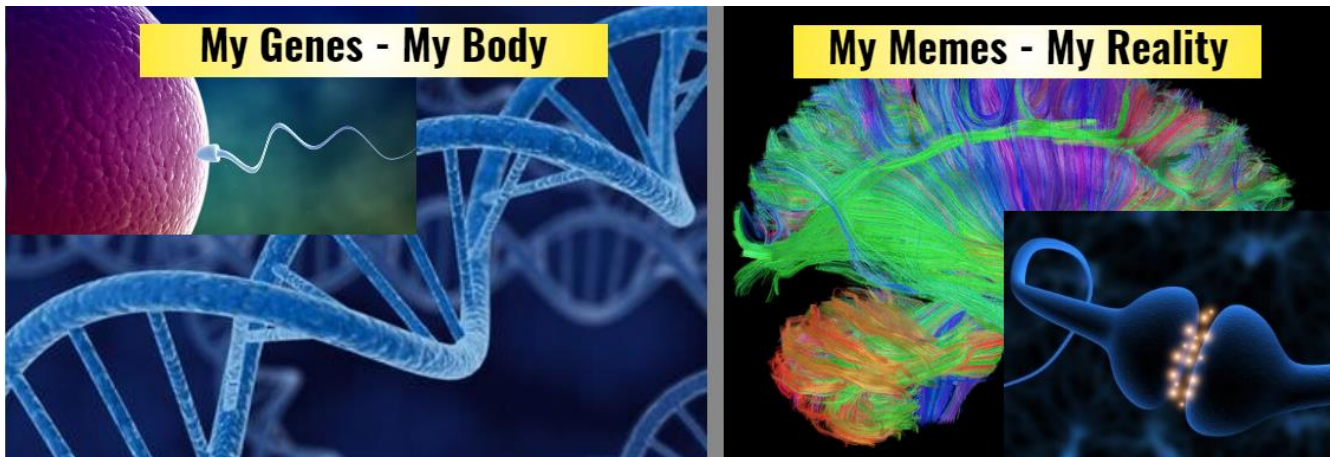
1. BHC Explorers Primary Guideline

*My belief system will be large enough for all facts,
open enough to be examined and questioned,
and flexible enough to change if errors or new facts are discovered.*

The first line introduces the importance of “making **clear distinctions** between **BELIEFS** and **FACTS**.” **Facts have a priority over beliefs.**

The second line **gives explorers permission** to examine each other’s beliefs and ask questions about them. It is to be done in a civil and respectful manner.

The third line reveals our goal – **remove errors and add facts to our belief systems.**



2. Creating an Identify Profile

Humans are genetic memetic social creatures.

An **Identify Profile** begins with a **name** and then **identifies genetic factors**, **memetic factors**, and **social factors** linked to that name.

A. Genetic Factors

In the above graphic find – “**MY Genes – My Body.**”

- The *Human Genome* is **a complete set of genetic instructions** for **creating a human body**.
- *Genetic factors* are sensory perceivable.
- Two very important genetic factors in Biblical Heritages are **gender** and **skin color**.

B. Memetic Factors

In the above graphic find – “**MY Memes – My Reality**.”

- Memes are **pieces of electro-chemical information** that are **in the neural networks of a brain** that **have been replicated in other brains**.
- Beliefs are **memetic models** with **names, identifying information, and strategies linked to the name**.

Thoughts alone are not memes. Thoughts become memes when they are replicated in other brains. The primary way **memes are replicated is by words**.

- A **word** is a **symbol or sound**, or a **group of symbols or sounds** with **an attached bundle of associations**.
- The **bundle of associations** is the product of the **Source’s culture, time period, geographical location**, and **personal experiences**.
- The **Source** is the **person speaking or writing the words**.

We explore beliefs by **constructing the meme model** linked to the **belief**. Then we identify the **words** linked to the belief, determine who the **Source** is and the **Source’s bundle of associations**. *This provides us with important information.*

Below are people with **Belief Meme Models** that contain the word “**Bible**.”

- For the first person “**a Bible**” is **a canonized text created under the authority of a religious institution**.
- For the second person “**The Bible**” is **the inerrant infallible Word of God**.

The *strategies* (**actions** and **behaviors**) of those two people are very different. The first person wants to know “**who canonized it?**” The second person “**views every word in their Bible as the absolute truth!**”

Biblical Heritage Explorers want to discover who canonized it, and who was the original Source of the words in the second belief.

Today you learned about four pieces of the puzzle I discussed in my previous email. *It took me years to discover what you learned in this email.* Using that information as we *Explore*

Biblical Heritages will increase your skills of exploring. This information will be on the [BHC website](#) so you can refer to it anytime or share it with new *Biblical Heritages Explorers!*

Let's put the pieces together,
Jim Myers

Helping People Examine Their Beliefs

- *Adopt Shared Morals & Values* • *Network to Make SHALOM*
- [Donate](#) • [Subscribe](#) • ["Like" on Facebook](#) • [Visit our Bookstore](#)