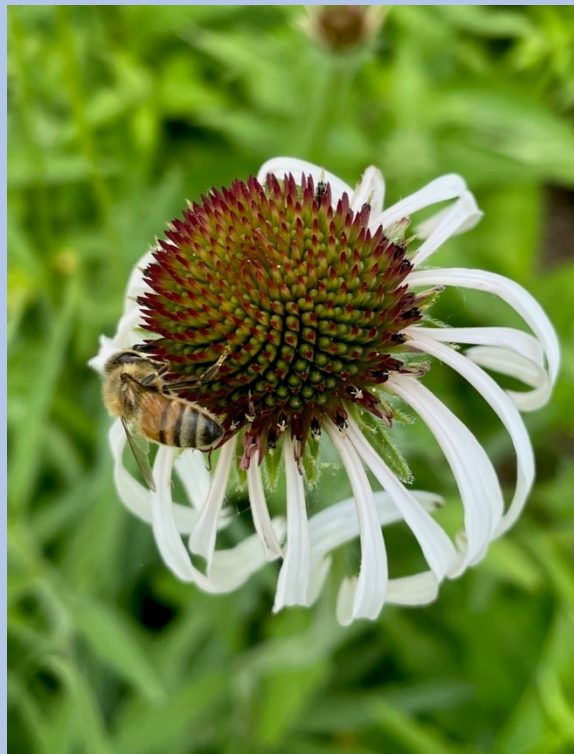




June 10 – Oakleaf Hydrangea, Olathe, KS – J. Patrick



June 11 – Pale purple coneflower, Berryton, KS – C. Burkhead



June 11 – False Sunflower (*Heliopsis helianthoides*), Berryton, KS – T. Urich



June 11 – Morford's Lavender, Olathe, KS – J. Patrick



June 17 – Golden Rain Tree, Berryton, KS – T. Urich



June 18 – Lythrum, Auburn, KS – S. Lane



June 20 – Poppy Mallow, Olathe, KS – C. Burkhead



June 20 – White yarrow, Olathe, KS – C. Burkhead



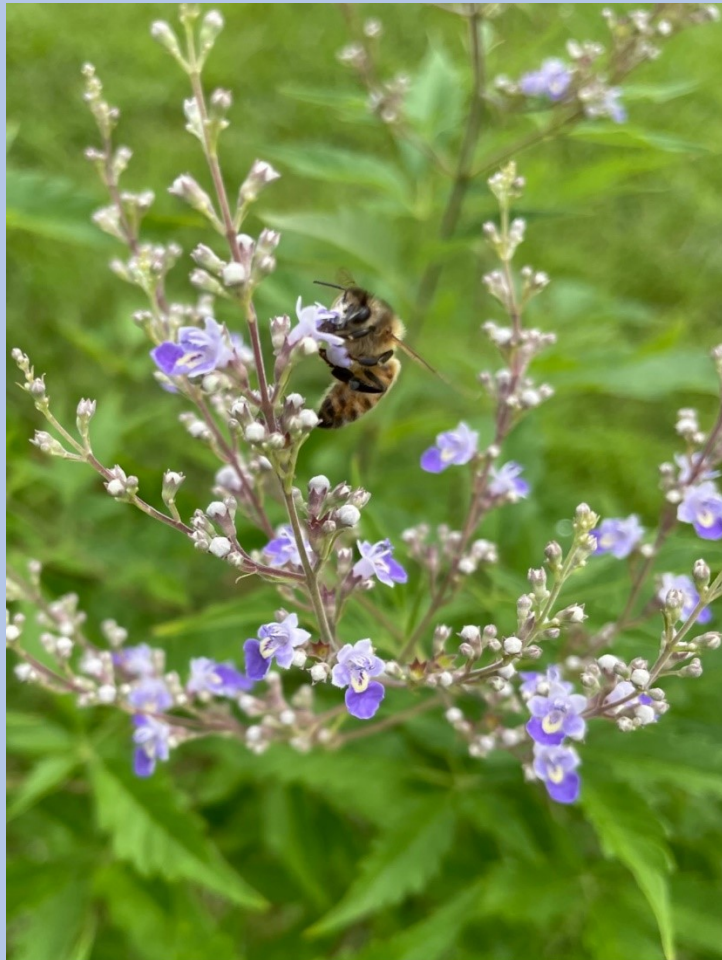
June 20 – Common Milkweed, Olathe, KS – C. Burkhead



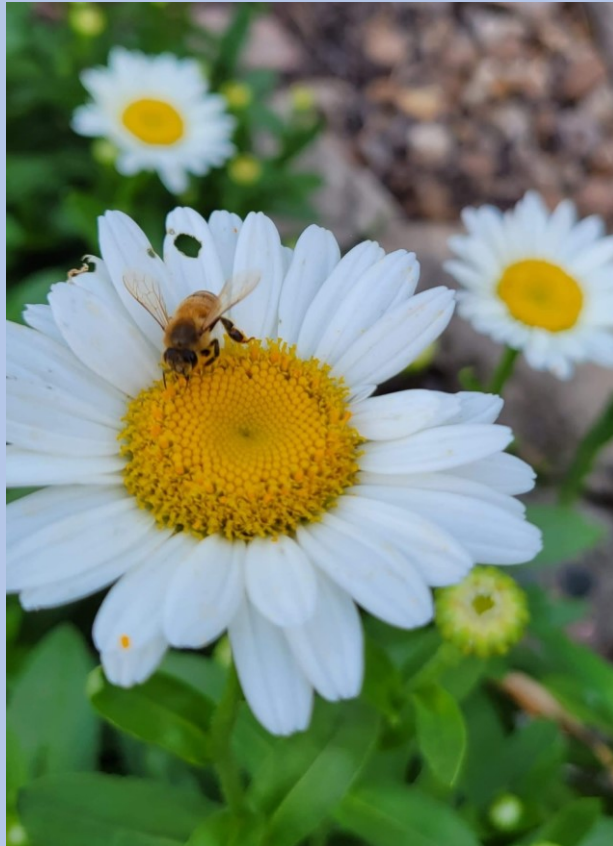
June 21 – Datura (Moonflower), Merriam, KS – R. Burns



June 21 – White Sweet Clover, Lawrence, KS – C. Burkhead



June 22 – Vitex, Berryton, KS – C. Burkhead



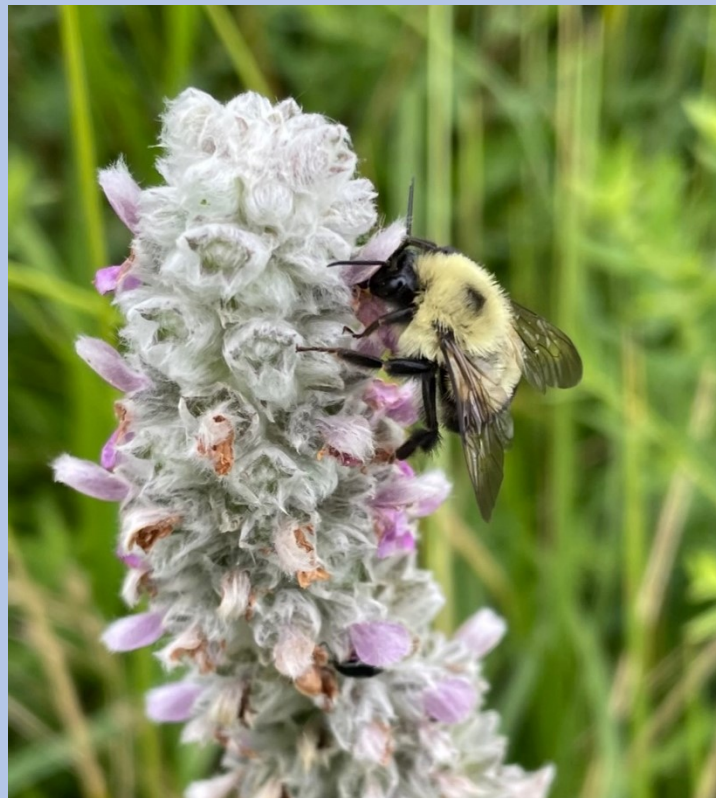
June 24 – Shasta Daisy, Kansas City, MO – J. Henry



June 25 – *Hypericum frondosum* 'Sunburst' (St. John's Wort), Berryton, KS – C. Burkhead



June 25 – St. John's Wort, Berryton, KS – C. Burkhead



June 26 – Lamb's Ears, Berryton, KS – C. Burkhead





June 26 – Rose of Sharon, Auburn, KS – S. Lane



June 26 – Dutch Clover, Carbondale, KS – S. Lauver



June 27 – Blue Eryngo, Auburn, KS – S. Lane



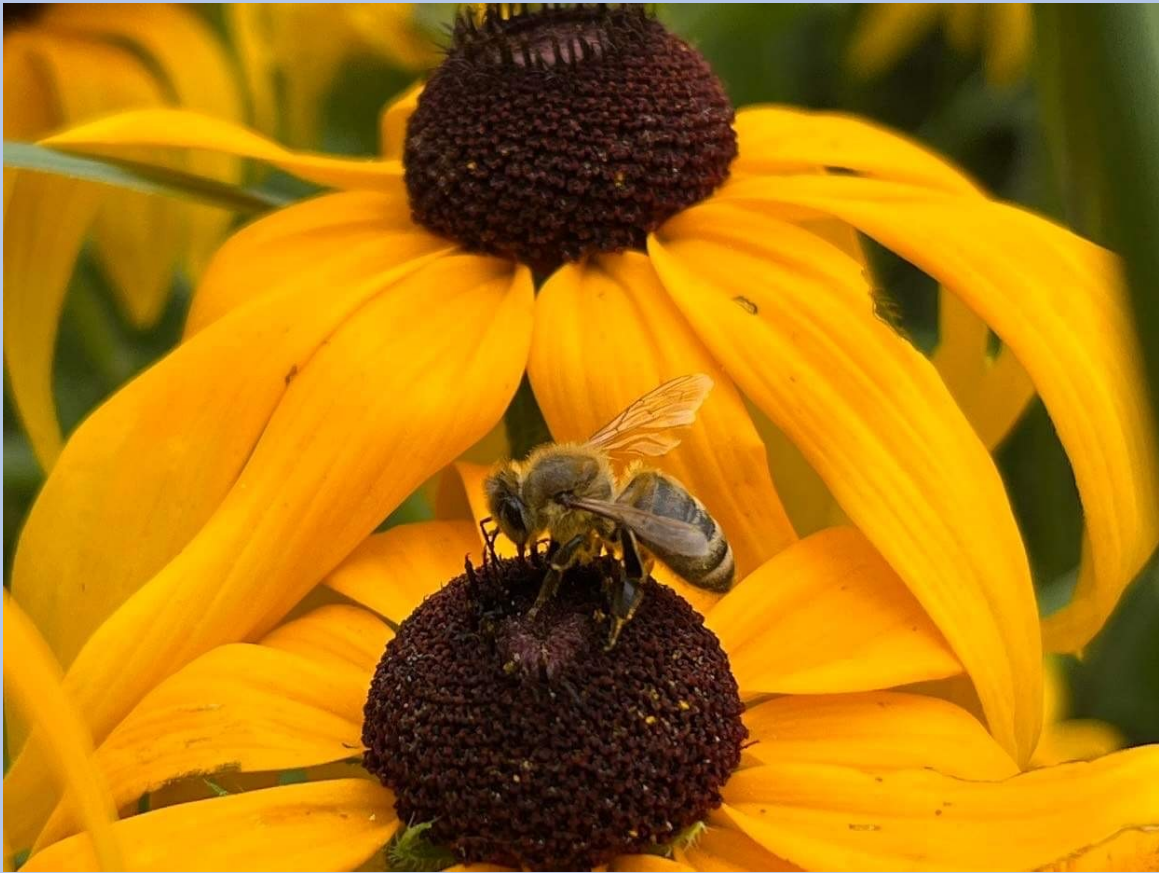
June 27 – Hosta, Auburn, KS – S. Lane



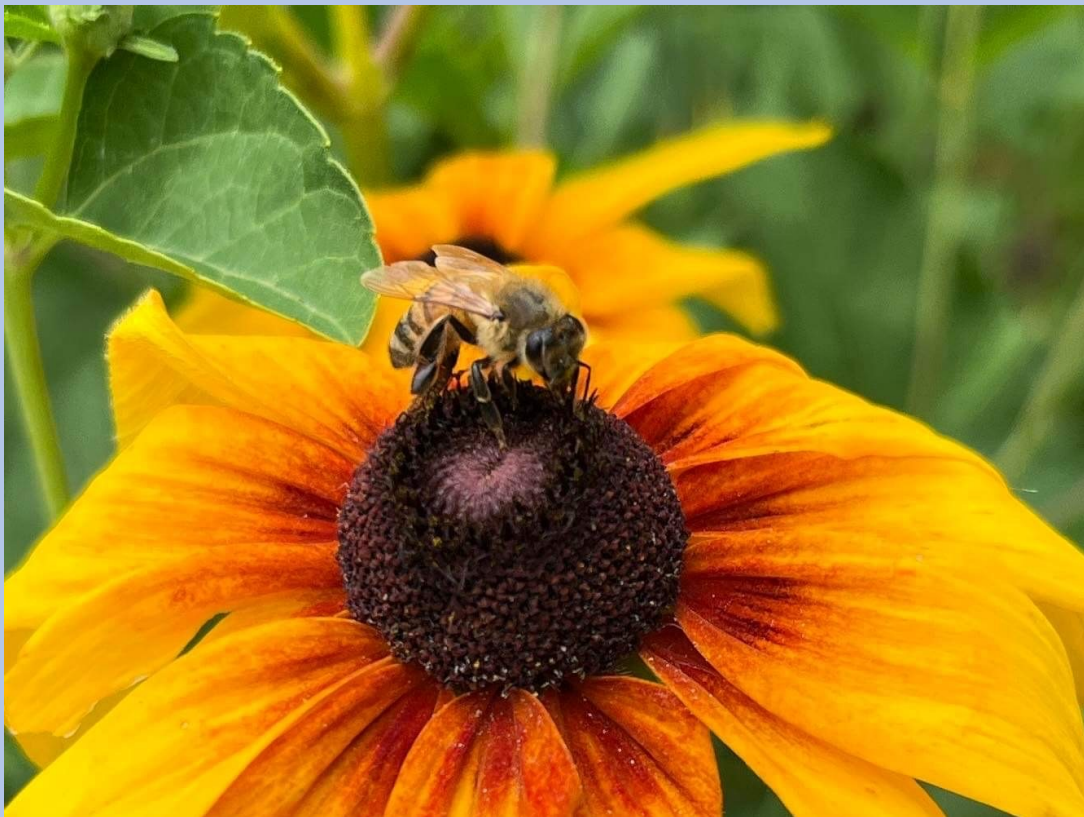
June 27 – Tall Phlox, Auburn, KS – S. Lane



July 1 – Chicory, Baldwin, KS – B. Bradley



July 1 – *Rudbeckia fulgida*, Berryton, KS – T. Urich



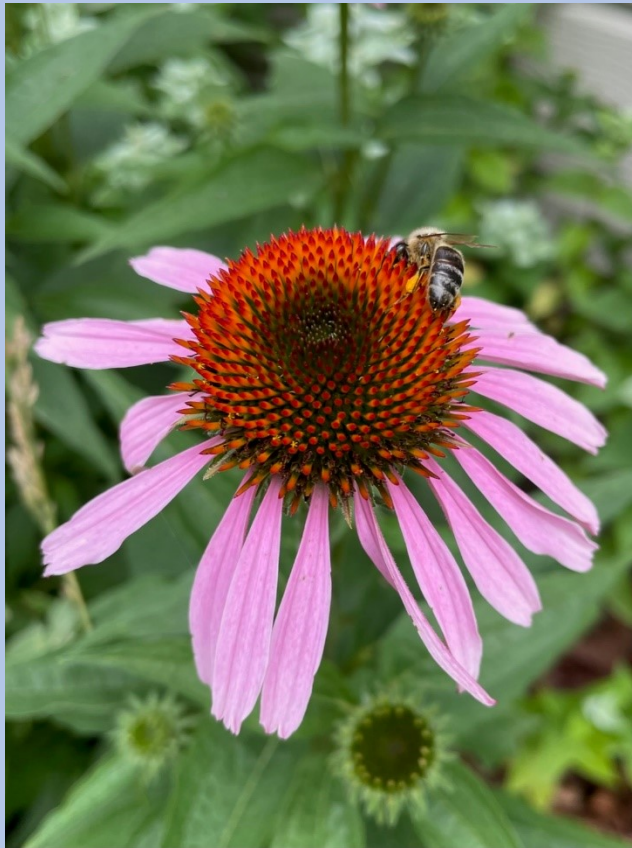
July 1 – *Rudbeckia hirta*, Berryton, KS – T. Urich



July 2 – American Germander, Paxico, KS – S. Lane



July 2 – Bergamot, Berryton, KS – T. Urich



July 2 – Echinacea, Berryton, KS – C. Burkhead



July 2 – Mountain Mint, Berryton, KS – C. Burkhead



July 6 – Queen Anne’s Lace, Olathe, KS – J. Henry