

Weekly 10-year Bond Yields Charts

Newsletter

June 18, 2018

The Weekly Bond Yields Charts Newsletter provides Cornelius Luca's trade ideas, model signals, and absolute charts

© 2018 Luca Global Markets, LLC. All rights reserved. This content is provided as general information only and does not constitute investment advice or a representation that any investment, security or other product is suitable for any person. This content reflects the opinions only of the author and cannot be interpreted as advice.

This content is the intellectual property of Cornelius Luca. Any copying, distribution or redistribution of this content is expressly prohibited without the prior written consent of Cornelius Luca.

Cornelius Luca shall not be liable for any errors in the content, or for any actions taken in reliance thereon.

Trade Idea

- Short US bond yield *while below* the 21-day exponential moving average
- Short Canadian bond yield *while below* the 5-day exponential moving average

10-year Treasury Yields Models

Daily & Weekly

10-Year Yield	Daily Model	since	Daily Bias (> or < 21-day EMA)	Daily Risk	Weekly Model	since	Weekly Bias (> or < 21-week EMA)	Weekly Risk
US	S	14-Jun	slightly bearish	slightly bearish	L	18-Jun	slightly bullish	slightly bullish
Germany	S	13-Jun	slightly bearish	slightly bearish	S	14-Jun	slightly bearish	slightly bearish
UK	S	13-Jun	slightly bearish	slightly bearish	S	15-Jun	slightly bearish	slightly bearish
Canada	S	14-Jun	slightly bearish	slightly bearish	S	14-Jun	slightly bearish	slightly bearish
Italy	S	11-Jun	slightly bearish	slightly bearish	S	14-Jun	bullish	slightly bearish
Spain	S	11-Jun	slightly bearish	slightly bearish	S	14-Jun	slightly bearish	slightly bearish

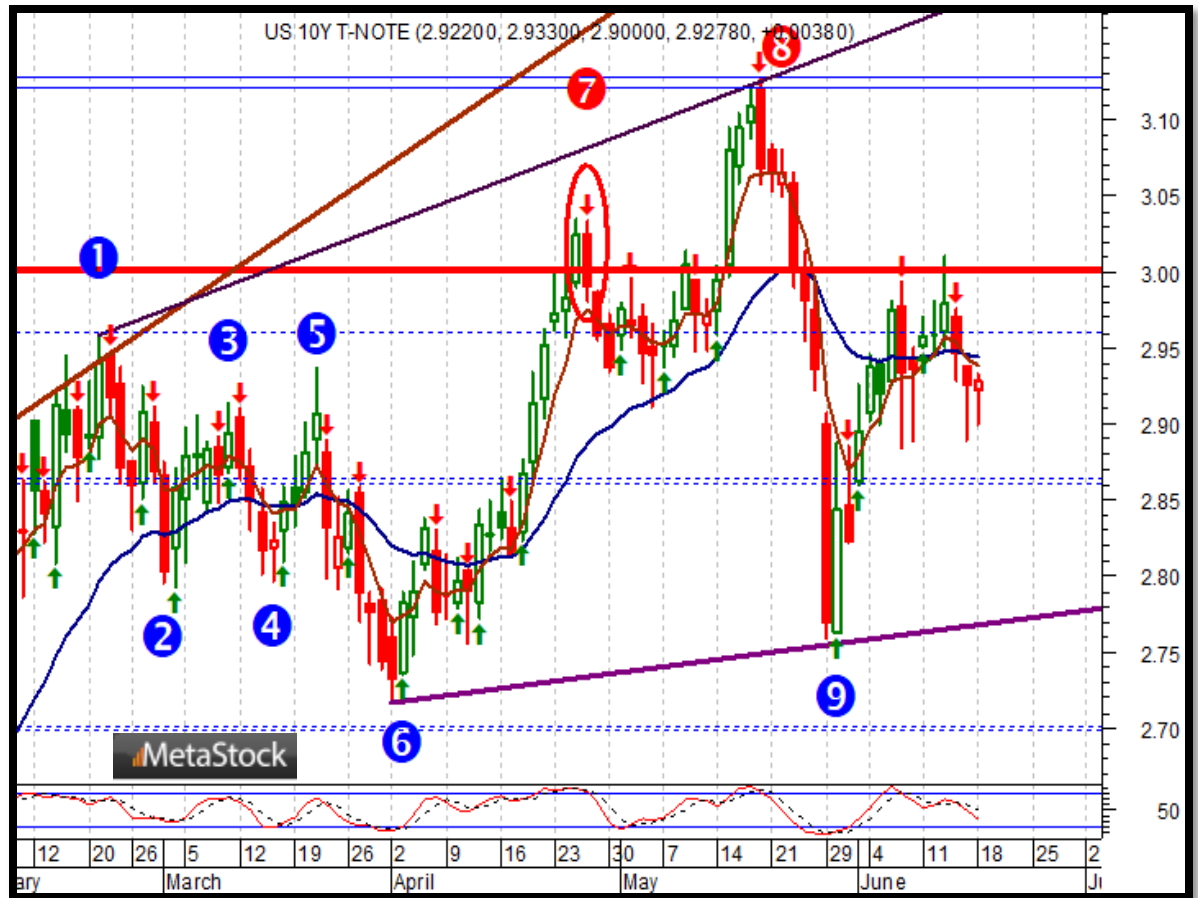
Source: Proprietary Luca Global Markets, LLC Model

US 10-year Treasury Yield

Comment:

Short US bond yield while below the 21-day EMA

- The US 10-year Treasury yield is consolidating around its 5- & 21-day EMAs
- The 3% area was tested, as expected, but capped
- Fresh information is needed
- Immediate support: 2.8840
- Further support: 2.8600, 2.7590 & 2.7170
- Initial resistance: 3.0000
- Further resistance: 3.0800 & 3.1280
- Fast stochastics: slightly bearish



G7 10-Year Bond Yield Trade Idea

Comment:

Short Canadian bond yield *while below the 5-day EMA*

- The Canadian bond yield is retesting the (re-drawn) trendline rising since 12/15
 - It trades below both its 5- & 21-day EMAs
 - A likely bearish flag would have an unlikely aggressive target
 - Immediate support: 2.1650
 - Further support: 2.0730
 - Initial resistance: 2.2475
 - Further resistance: 2.3400 & 2.5370
- Fast stochastics: bearish



How to Use the Heat Map

Bias: If the Candle > 21-period EMA = bullish
 If the Candle < 21-period EMA = bearish
 If the Candle around 21-period EMA = sideways

Long or Short

Since when

Risk: Bullish or Bearish
 Candle as of Monday am EST

	Commodities	Daily Model	since	Daily Bias (> or < 21-day EMA)	Daily Risk	Weekly Model	since	Weekly Bias (> or < 21-day EMA)	Weekly Risk
Energy	Crude (CLc1)	S	27-Apr	bullish	slightly bullish	L	23-Mar	slightly bearish	slightly bullish
	Brent (LCOc1)	L	21-Apr	slightly bullish	slightly bullish	L	6-Apr	slightly bearish	slightly bullish
	Natural gas (NGc1)	S	23-Apr	bearish	bearish	S	20-Apr	bearish	slightly bearish
	Palm oil (FCPOc1)	L	24-Apr	sideways	neutral	S	20-Apr	slightly bearish	slightly bearish
Metals	Gold (GCc1)	S	24-Apr	bearish	bearish	S	20-Mar	slightly bearish	slightly bearish
	Silver (SIc1)	S	22-Apr	bearish	bearish	S	24-Apr	bearish	bearish
	Platinum (PLc1)	S	20-Apr	bearish	bearish	S	20-Mar	bearish	slightly bullish
	Copper (HGc1)	L	24-Apr	slightly bearish	slightly bullish	S	24-Apr	slightly bearish	slightly bearish
Softs	Coffee (KCN5)	L	24-Apr	sideways	neutral	L	24-Apr	slightly bullish	slightly bullish
	Cocoa (LCCN5)	L	23-Apr	bullish	bullish	L	13-Apr	bullish	bullish
	Soy meal (SMN5)	S	24-Apr	bearish	slightly bearish	S	24-Apr	bearish	slightly bearish
	Wheat (WN5)	S	24-Apr	bearish	slightly bearish	S	24-Apr	bearish	bearish
	Corn (CN5)	S	20-Apr	bearish	bearish	S	6-Apr	bearish	bearish

Source: Proprietary Luca Global Markets, LLC Model

L = long
 S = short