



HANGAR 'A' DEVELOPMENT PROGRAM – FORT DODGE REGIONAL AIRPORT, FORT DODGE, IA

McClure has been actively working with the Fort Dodge Regional Airport Commission since 1978. In March of 2016, the Fort Dodge Regional Airport tasked McClure with providing design, bidding and construction administration services in connection with the Hangar 'A' Development Program. The Hangar Development Program involves demolishing the existing T-Hangar Rows 'A' and 'B', and constructing a series of proposed corporate box hangars in the area to provide safe and reliable aircraft storage facilities. The existing hangar facilities and adjacent pavement are in very poor condition and in need of replacement. A series of hangars will be constructed in this area following the demolition of the previous hangars which will ultimately accommodate larger business jets.

Federal funding for hangar development is rarely available and as such often requires unique financing solutions. McClure and the Fort Dodge Regional Airport are working in a collaborate effort to acquire these grants, keep local funding to a minimum, and ultimately provide the client with a quality product that is consistent with the Airport's vision. **Reference: Rhonda Chambers, Airport Manager, 515.573.3881**



RUNWAY 18/36 RECONSTRUCTION – SOUTHEAST IOWA REGIONAL AIRPORT, BURLINGTON, IA

The Southeast Iowa Regional Airport tasked McClure with providing design, bidding and construction management to reconstruct the Airport's primary runway, Runway 18/36. Runway 18/36 consisted of an asphalt pavement surface course (approximately 6 inches thick) overlaid on concrete pavement (approximately 8 to 10 inches thick). The majority of concrete pavement was constructed in 1944 and a 1,351-foot extension to the south constructed in 1968. The most recent improvement was a 3-inch asphalt overlay in 2005.

The asphalt surface was experiencing climate-related distresses such as cracking, weathering, and blowups (particularly along the edges of the runway). Following a 2014 visual pavement

assessment, most of the runway was assigned a Pavement Condition Index (PCI) value of 59 out of 100 while the southernmost 1,000 feet was assessed at 56. During the preliminary design phase a geotechnical investigation was completed and it was deemed necessary to reconstruct the runway. **Reference: Sara Sandburg, Airport Director, 319.754.1414**



NORTH EXECUTIVE CAMPUS DRAINAGE AND GRADING – COUNCIL BLUFFS MUNICIPAL AIRPORT, COUNCIL BLUFFS, IA

The Airport has expressed their need to expand their aircraft storage capacity to meet the needs of the Airport's new Fix Based Operator (FBO), whom they recently went through a procurement process to bring on board and are working through development of a long-term lease agreement.

Additionally, the Airport has a critical goal of separating corporate aircraft traffic from GA and flight school traffic. McClure has been tasked to perform site verification services and grading/drainage design for the entire proposed North Executive Campus (NEC) that will serve as the new home of corporate aircraft traffic and short- and long-term storage.

This infrastructure investment will allow the Airport to establish a 36-acre campus that promotes the growth of aircraft charter and transient business aircraft traffic. McClure's role includes verifying existing site conditions, geometric layout, and performing grading and drainage design for the proposed site. McClure, with input from the Owner, stakeholders, and the FAA, developed three (3) preliminary site layout options, taking into consideration potential NEC tenants and their requirements to site layout, utility layout, apron layout (to meet tenant fleet mix needs) and taxiway and taxilane layout. **Reference: Andy Biller, Executive Director, 402.599.0484**

KEY PERSONNEL

McClure has developed a project team that is not only competent and capable of providing The City of Garnett with an exemplary project, but a team whose experiences are also proven to complement one another. Each team member was strategically selected because of their extensive experience in their field and area of expertise, and previous experience with similar projects.

From our office in North Kansas City we will be able to readily meet with your staff and representatives for planning and design phases, easily attend meetings for any public input, and as any projects move into construction we also intend to manage any construction and project commissioning from this office. Supporting our key personnel is a well-established team of project managers, engineers, surveyors, and on-site project representatives within the McClure organization, available to serve the City as needed.



ANDREW MAYSENT, PE VICE PRESIDENT, AVIATION

Andrew currently serves as the Vice President of Aviation where he manages the firm's aviation resources and oversees the delivery of airport planning, design, and construction projects. Andrew is a shareholder and a member of the Board of Directors at McClure. In 2017, Andrew was elected to the Board of Directors for the Iowa Public Airports Association, where he advocates for Iowa's Airports. He also holds an FAA private pilot license. Andrew brings over 20 years of airport engineering experience and has a thorough understanding of the FAA policies, design standards, and grant process. His experience has focused primarily on civil airside projects, including improvements to runways, taxiways and aprons – from minor rehabilitation and overlays to complete reconstructions. He has managed airport projects throughout the United States ranging from large commercial service airports, such as Kansas City International, Denver International, and Louisville International, to more than 50 general aviation airports throughout the FAA Central Region.

REGISTRATIONS

PE: MO, IA, KS, NC

EDUCATION

MBA, Finance
University of Missouri –
Kansas City

BS, Civil Engineering
Iowa State University

YEARS OF EXPERIENCE

22

RELATED PROJECT EXPERIENCE:

- Fort Dodge Regional Airport, Hangar A Units 1–4 Construction
- Fort Dodge Regional Airport, Air Carrier Apron Reconstruction
- Southeast Iowa Regional Airport, Runway 18/36 Reconstruction
- Fort Dodge Regional Airport, Runway 6/24 Rehabilitation
- Ankeny Regional Airport, Reconstruct Taxiways A & C North
- Davenport Municipal Airport, Runway 15/33 & 3/21 Reconstruction
- Ankeny Regional Airport, Runway 18/36 Pavement Rehabilitation



JAY PUDENZ, PE, LEED AP TEAM LEADER, AVIATION

Jay currently serves as an Aviation Team Leader for McClure, leading projects in delivering airport planning, design, and construction administration. Jay brings 20 years of experience managing and leading national and international civil engineering projects and teams in commercial, industrial and institutional land development and aviation (landside and airside). His projects have included large airport developments in Chicago; Indianapolis; Fort Lauderdale; Seattle; Anchorage; Doha, Qatar; and Jeddah, Saudi Arabia. Jay's most recent experience is in serving commercial and general aviation clients throughout Iowa and the Midwest.

RELATED PROJECT EXPERIENCE:

- Waverly Municipal Airport, Construct Taxiway Connector
- Waverly Municipal Airport, Reconstruct T-Hangar Taxiway
- Waverly Municipal Airport, Runway 11/29 Extension
- Mount Pleasant Municipal Airport, Runway 15/33 Reconstruction
- Iowa Falls Municipal Airport, Runway 13/31 Rehabilitation
- Iowa Falls Municipal Airport, Parallel Taxiway B Construction
- Ankeny Regional Airport, Construct North Box Hangar
- Knoxville Municipal Airport, Expand Apron
- Ankeny Regional Airport, Taxiway D Apron + Access Roadway Paving, Phase 2-4
- Guthrie County Regional Airport, Runway 18/36 Reconstruction
- Maquoketa Municipal Airport, Runway 15/33 Extension
- Ankeny Regional Airport, Environmental Assessment
- Guthrie County Regional Airport, Runway 18/36 Reconstruction

REGISTRATIONS

PE: IA, IL, MO
LEED Accredited
Professional

EDUCATION

MBA, Business
Administration
University of Iowa

BS, Civil Engineering
Iowa State University

YEARS OF EXPERIENCE

20



DAVE JOENS, PE, PLS SENIOR AVIATION ENGINEER

Dave currently serves as a Senior Aviation Engineer for the Aviation Team where he delivers a wide variety of airport planning, design, and construction projects. He is a member of the American Society of Civil Engineers and the Society of Land Surveyors of Iowa. Dave brings 39 years of engineering experience and has a thorough understanding of the FAA policies, design standards and grant process. He has gained extensive experience in the design, planning, and construction of projects on airports throughout Iowa and Missouri. His experience has focused on both airside and landside projects, including improvements to runways, taxiways, aprons, access roads, and vehicle parking lots – from minor rehabilitation and overlays to complete reconstruction. His design experience has been focused mainly on general aviation airports throughout the FAA Central Region.

REGISTRATIONS

PE: IA, MO

PLS: IA

EDUCATION

BS, Agricultural
Engineering
Iowa State University

YEARS OF EXPERIENCE

39

RELATED PROJECT EXPERIENCE:

- Waverly Municipal Airport, Construct Taxiway Connector
- Waverly Municipal Airport, Reconstruct T-Hangar Taxilane
- Knoxville Municipal Airport, Expand Apron
- Cherokee County Regional Airport, Taxiway Lighting Improvements
- Shenandoah Municipal Airport, Fuel System Improvements
- Ankeny Regional Airport, Taxiway D Access Road and Hangar Apron
- Webster City Municipal Airport, Runway Lighting and NAVAID Reconstruction
- Waverly Municipal Airport, Runway 11/29 Extension
- Ankeny Regional Airport, Reconstruct Taxiways A&C North
- Iowa Falls Municipal Airport, Construct Parallel Taxiway B
- Sheldon Municipal Airport, Rehabilitate Runway 15/33 and South Taxiway Connector
- Iowa Falls Municipal Airport, Construct Terminal Apron Expansion



ERIK HARTLEY SENIOR AVIATION PLANNER

Erik recently joined McClure as an in-house Senior Aviation Planner. With 14 years of experience, he has developed a unique and well-rounded breadth of knowledge in various aviation disciplines, including airport planning, management, and mechanics. With a strong work ethic and background in the United States Air Force (USAF), coupled with extensive experience collaborating with airports nationwide, Erik brings a wealth of expertise in Safety Management Systems (SMS) programs, resource and planning allocation, capital improvement planning, financial forecasting, and managing regulations with federal, state, and local bodies.

RELATED PROJECT EXPERIENCE:

- Blue Grass Airport, Master Plan
- MidAmerica St. Louis Airport, Master Plan
- Greenville Downtown Airport, Master Plan
- Coeur d'Alene Airport – Pappy Boyington Field, Master Plan
- Greenville – Spartanburg International Airport, Financial Planning
- Allegheny County Airport, Financial Planning
- Greater Binghamton Airport, Financial Planning
- Tweed New Haven Airport, Financial Planning
- Maine DOT, State System Planning
- Nebraska DOT, State System Planning
- Hawaii DOT, Safety Management System
- Boise DOT, Safety Management System
- Greenville – Spartanburg International Airport, Landside Study
- MidAmerica St. Louis Airport, Landside Study
- Wilmington International Airport, Landside Study
- General Wayne A. Downing Peoria International Airport, CATEX & Exhibit A
- Grand Glaize Airport, CATEX & Exhibit A
- Washington Regional Airport, CATEX & Exhibit A

EDUCATION

MS, Safety Management
Systems
University of Central
Missouri

BS, Aviation
Management
Southern Illinois
University

YEARS OF EXPERIENCE

14

CONSTRUCTION OBSERVATION



SEEING YOUR VISION TO THE END.

Construction services provide you with a representative who will ensure your project is constructed with the attention to the detail with which it was designed. We offer on-site management services for the construction of everything from mixed-use developments and parklands to roadways, treatment plants and utility relocations.

This unique service saves both time and money, while providing an open line of communication between the owner and contractor. McClure offers a team of construction observers whose expertise can rarely be matched when it comes to years of experience and industry knowledge.

WHERE WE MAKE AN IMPACT:

- Attend Progress Meetings
- Examine Workmanship for Conformity to Standards
- Interface with Property Owners and Utilities
- Interpret Plans and Specifications
- Maintain Construction Diary
- Maintain Construction Plan As-Builts
- Make Recommendations for Change Orders
- Organize and Conduct Preconstruction Conferences
- Prepare Pay Request and Change Order Documents
- Prepare Samples for Laboratory Testing
- Provide Construction Administration
- Provide Progress Reports
- Review Shop Drawings
- Verify Accuracy of Dimensions of Installation and Layout
- Verify Levels, Alignment, and Elevation

PROJECT HISTORY

20-INCH WATER TRANSMISSION MAIN TO 4 MG CONCRETE GROUND RESERVOIR – LEAVENWORTH, KS

McClure was hired by Leavenworth Waterworks to plan, design, and provide construction management for a new 4 MG potable water reservoir and 5,390 feet of 20-inch water transmission main. The project involves Federal property acquisition for the new tank as a perpetual easement, new 20-inch High-Density Polyethylene (HDPE) and Ductile Iron Pipe (DIP) water mains, SRF financing, archaeological investigations and geotechnical by sub-consultants, permitting, and fast track schedule to have planning and design completed in less than one year. The tank project is located on a high and steep hill designed as elevated ground storage. Corrosion in the area is high, so the preferred pipe is HDPE installed using open cut and HDD before changing to DIP at three connection points. The project is 100% designed and in permitting review status. **Reference:** Joel Mahnken, PE, General Manager, Leavenworth Waterworks, 913.547.5994, jmahnken@lvnwter.org



KENNETH ROAD BRIDGE REPLACEMENT – KANSAS CITY, MO

McClure provided design services to replace the Kenneth Road Bridge over the Blue River. The project was federally funded and administered through the MoDOT LPA process and included coordination between Kansas City, Missouri, Jackson County, Missouri, the Village of Loch Lloyd, Missouri, and Overland Park, Kansas, with all parties contributing funding towards the project and being involved in the review of the design and traffic control. The new four-span bridge utilizes NU43 prestressed concrete I-girders carrying two lanes of traffic and a six-foot pedestrian sidewalk. The site is located in a regulated floodway, adding more hydraulic elements to the scope of work, a no-rise certification, and the

request of completing a LOMR once the bridge is accepted by the governing body. Following design services, McClure provided Construction Inspection and Construction Administration services to report on the progress of the construction and to ensure compliance with federal guidelines for funding. **Reference:** Patty Hilderbrand, KC Public Works, 816.513.2576, patty.hilderbrand@kcmo.org

ARGOSY CASINO PARKWAY – RIVERSIDE, MO

Our SKW team (acquired by McClure in 2018) provided construction administration and observation services for the construction of Argosy Casino Parkway–North (from Argosy Parkway on the south to Tullison Road on the north). The project included 880 linear feet of 42-foot wide (back of curb to back of curb) concrete pavement with 2-foot curb and gutter; 2,686 linear feet of 32-foot wide (back of curb to back of curb) concrete pavement with 2-foot curb and gutter; a 370 foot, two-span bridge over BNSF Railroad; and a 309 foot, three-span bridge over Line Creek. On the northern portion of this project approximately 2,245 linear feet of the roadway (including the Line Creek Bridge) lies within the levee critical area (LCA) of the Riverside-Quindaro Bend Levee. Construction for this project was completed within 11 months. Aside from typical observation and administration on the road and bridge work, this project also occurred within the LCA. As such, construction in the LCA requires coordination with the Riverside-Quindaro Bend Levee District, the City of Riverside, utility companies and the Contractor and must meet certain U.S. Army Corps of Engineers (USACE) requirements.

Reference: Contact City of Riverside, MO



BRIDGE 1400000 BRO-B027(18) REPLACEMENT – COOPER COUNTY, MO

The existing bridge on Osage Valley Road is a steel truss structure which is considered fracture critical. McClure personnel had previously inspected the bridge for MoDOT within their fracture critical bridge inspection program. The County completed a repair recommendation provided by McClure to keep the bridge operational, but with a load posting. The County decided to replace the structure, utilizing their BRO funds. McClure provided survey, hydraulic analysis, permits, geotechnical design, preliminary layout, and final bridge design. McClure also provided materials testing and construction observation services during construction.

The final design includes a single-span structure with steel H-piles for the substructure and precast prestressed concrete NU70 girders for the superstructure with a concrete deck. The 136'-6" single-span structure allows for increased hydraulic capacity and reduced potential for scouring. The proposed structure has an increased width for two-way traffic and large agricultural equipment. **Reference:** George Monk, Presiding Commissioner, 660.882.2228, george.monk@coopercountymo.gov

KEY PERSONNEL

McClure has developed a project team that is not only competent and capable of providing The City of Garnett with an exemplary project, but a team whose experiences are also proven to complement one another. Each team member was strategically selected because of their extensive experience in their field and area of expertise, and previous experience with similar projects.

From our office in North Kansas City we will be able to readily meet with your staff and representatives for planning and design phases, easily attend meetings for any public input, and as any projects move into construction we also intend to manage any construction and project commissioning from this office. Supporting our key personnel is a well-established team of project managers, engineers, surveyors, and on-site project representatives within the McClure organization, available to serve the City as needed. Resumes of key personnel are presented below.



DANNY WING CONSTRUCTION PROJECT MANAGER

Danny serves as an On-Site Representative for McClure. His role is to communicate the activities of the contractor's progress to the client while observing workmanship, scheduling, payments, change orders, RFI's, etc. Danny works closely with the Project Manager, reviewing contractors for compliance with the project specifications and to keep the client informed as to the contractor's progress. Danny's experience with civil engineering projects include land development, water and wastewater conveyance systems, water and wastewater treatment plants, storm water conveyance systems, and more.

RELATED PROJECT EXPERIENCE:

- Water Treatment Plant, Adel, IA
- RO Water Treatment Plant, Grimes, IA
- Wastewater Treatment Plant Improvements, Fairfield, IA
- Wastewater Treatment Plant Improvements, Adel, IA
- Wastewater Treatment Plant Improvements, Spencer, IA
- High Service Pump Station, Adel, IA
- High Zone Water Main, Adel, IA
- Water System Improvements – Phase I, Part B, Section 1 & 2, Adel, IA
- Wells 5 & 6, Well Houses & Well Drilling, Adel, IA
- Ground Storage Reservoir, Adel, IA
- Water Treatment Plant Improvements, Fort Dodge, IA

EDUCATION

BS, Construction
Engineering
Iowa State University

YEARS OF EXPERIENCE

17



DAVID GRIFFIN, RG, PG ON-SITE REPRESENTATIVE

David operated his own geological resources firm for many years before joining McClure in 2023 as an On-Site Representative. He is a Professional Registered Geologist with more than 20 years of experience in project management, field supervision and geological evaluation of rock, soil and water. His expertise includes project and construction management, all aspects of environmental geology, petroleum geology and oil exploration management using soil and groundwater characterization, field work management, digital mapping, wellsite drilling operation supervision, technical report writing, environmental characterization and remediation of chemically impacted sites.

RELATED PROJECT EXPERIENCE:

- Cedar Valley Reservoir Auxiliary Spillway Repair, Garnett, KS
- Evaluated, designed and developed new drilling projects on profitable oil leases in Kansas and Missouri*
- Supervised drilling hundreds of successful oil wells in four state region in Kansas, Missouri, Nebraska and Texas*
- Provided geologic wellsite supervision with gas detection and open-hole log evaluation for wells as deep as 3,800 feet*
- Project manager for cleanup of LUST (Leaking Underground Storage Tank) site owned by the City of Kansas City, MO, Parks and Recreation Department*

**Project completed under previous employment*

REGISTRATION

Licensed Geologist:
KS, MO

EDUCATION

BS, Geology,
University of Kansas–
Lawrence

YEARS OF EXPERIENCE

25



STORMWATER MANAGEMENT

INTENTIONAL EMPHASIS ON SUSTAINABILITY.

McClure has extensive experience working with all sizes of municipalities on a wide range of stormwater management projects. We have stormwater experience with both public and private clients, ranging from city-wide master plans to drainage memos for specific areas with drainage problems. We also perform reviews of development plan sets for cities as part of our on-call contract. Our Environmental Group brings additional expertise and experience in permitting, design and implementation of both water quantity and water quality solutions to not only benefit public and private projects, but also to minimize and mitigate the effect on the environment.

WHERE WE MAKE AN IMPACT:

- Urban Water Quality Practices
- Hydrologic and Hydraulic Modeling
- Floodplain Mapping and Modeling
- Agricultural Water Quality Practices
- Urban Stormwater Management
- SWPPP Development
- Sediment and Erosion Control Design
- Dams, Lakes, Ponds, and River Works
- Water Quality Modeling
- GIS Services and Infrastructure Mapping
- Ecological Restoration
- Streams and Wetland Restoration
- Drainage Studies (small & large) and Stormwater Master Plans
- Environmental Permitting
 - NEPA Services
 - Stream & Wetland Delineation
 - Section 404/401
 - T&E Habitat Assessment

PROJECT HISTORY



CEDAR CREEK RESERVOIR EMERGENCY SPILLWAY – GARNETT, KS

McClure partnered with the City of Garnett, Kansas, to study, design and provide construction observation for repairing the Auxiliary Spillway for the Cedar Valley Reservoir. The repair addressed significant scour that had occurred during two significant storm events where the auxiliary spillway was damaged. The work involved a detailed study looking at all options available to address the scour and prevent it from reoccurring, as well as adhering to the requirements of the Kansas Department of Agriculture Division of Water Resources Dam Safety Division (KS-DWR). As the reservoir helps provide drinking water, the City obtained funding from the Federal Emergency Management Agency (FEMA) and the money

and process was administered by the Kansas Department of Emergency Management (KDEM). The flexamat product was chosen because the locked together concrete blocks embedded into a high-strength geogrid enables it to withstand flows and velocities when the auxiliary spillway is engaged after significant storm events. Flexamat was also chosen because vegetation can grow through the matting, and the matting is strong enough to be driven upon and mowed (Over 300,000 square feet of matting was placed). As part of the design, a wetland that had formed in one of the areas of scour was relocated to the downstream end of the flexamat. The wetland was designed for high marsh and low marsh plantings and replaced the sedimentation basin that had been placed at the beginning of construction to handle construction site runoff.

Reference: Travis Wilson, City Manager, City of Garnett, 785.448.5496, twilson@garnettks.net



STORM IMPROVEMENTS PHASE 5: VINE STREET BOX CULVERTS – MACON, MO

McClure provided a topographic survey, easements, performed hydraulic calculations, designed the culvert to allow two-way traffic, and developed final construction plans, specifications, bidding and contract documents. McClure assisted the City in obtaining the required US Army Corps of Engineering and MDNR permits. Services included: performed a topographic survey, performed hydraulic calculations, designed culvert, assisted the City in obtaining required permits.

Reference: Avis Marshall, City Administrator, 660.385.6421, administrator@cityofmacon-mo.gov



89TH & LANE CHANNEL IMPROVEMENTS – KANSAS CITY, MO

As part of an on-call stormwater contract with the City of Kansas City, Missouri Water Services Department, McClure provided survey, study, design and construction administration for the 89th & Lane channel improvements. This involved the removal of gabion-lining that had failed and replacement with large block retaining wall (and accompanying safety fence) and riprap floor for approximately 380' of new conveyance channel. The project updated a conveyance channel traveling between and on the backside of homes (in relation to 89th & Lane Streets). It also removed unneeded vegetation that had grown within the gabion lining, and provided minimal disturbance while restoring backyards to a more useable and safe condition.

Reference: KC Water, 816.513.0234



WALNUT STREET CULVERTS AND STORMWATER SYSTEM UPGRADES – MACON, MO

The City of Macon, Missouri, hired McClure to design various upgrades to Walnut Street. With limited funds available, the project was divided into multiple phases. The first phase was replacing two undersized and deteriorating culverts with precast box culverts with adequate hydraulic capacity and increased roadway width for future development. McClure provided survey, hydraulic analysis, permits, preliminary layout, final design, materials testing, and construction observation services to complete this phase. Knowing the roadway reconstruction was to follow, one box culvert was laid out to accommodate the increase in elevation expected with the roadway work. The

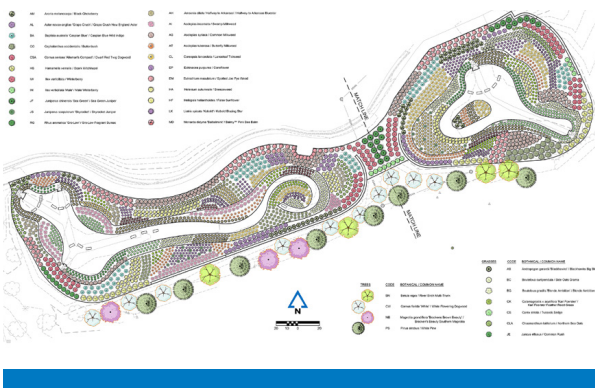
first phase was complete in January 2020. The second phase of the project addresses stormwater drainage concerns and to widen/rehabilitate a section of Walnut Street. McClure provided design and plans for a stormwater drainage system, including HDPE pipe and steel grate inlets to convey the stormwater. McClure provided plans for widening and rehabilitating the roadway with a portion of it being mainly a 2-inch asphalt overlay and another reconstructing the roadway with added base rock and 6-inch asphalt cross-section. Multiple utilities were present, which required extensive coordination as well as permanent and temporary easements. **Reference: Avis Marshall, City Administrator, 660.385.6421, administrator@cityofmacon-mo.gov**



OAKVALE DRIVE STORM DRAINAGE IMPROVEMENTS – HARRISONVILLE, MO

Our SKW team provided survey and engineering design services to replace the Beckerdite area waterlines and to improve the Oakvale area storm drainage in Harrisonville, MO. Survey crews provided design surveys by establishing monumented horizontal and vertical control, and locating utilities. SKW obtained title reports for approximately 60 properties and created a base map identifying ownership and easements. A preliminary alternative analysis and final drainage design was prepared for the stormwater concerns that extended from Eastwood Road south to Muddy Creek Tributary. The area drains approximately 22 acres within the Muddy Creek Tributary #2 watershed. Stormwater improvement designs included a triple 36" culvert under Oakvale Drive and 228' of

channel work upstream and downstream of the culvert. The bottom of the channel is comprised of rock and a concrete pilot channel as well as a grade control structure at the furthest downstream end of the project in order to prevent erosion upstream. The sides of the channel are comprised of 270 LF of modular block retaining wall with a fence for protection of nearby residents. **Reference: City of Harrisonville, 816.380.8916**



DETENTION BASIN CONVERSION TO OUTDOOR LAB – RAYMORE, MO

Imagine the wonder of a child experiencing the space as they discover birds, and butterflies as viewed from a new elevated boardwalk. Image an amazing, vegetated backdrop as bridal parties post social media pictures throughout all seasons. The City/McClure are designing the transition of two detention basins downstream from City Hall into beautiful rain gardens to support the larger community and improve stormwater filtration. The project will improve water quality as it heads downstream towards Silverlake. McClure is responsible for all management, design, cost estimation scope. Drawings include site demolition, layout, grading, and detailing.

Reference: Nathan Musteen, Parks and Recreation Director, 816.322.2791, nmusteen@raymore.com

KEY PERSONNEL

McClure has developed a project team that is not only competent and capable of providing The City of Garnett with an exemplary project, but a team whose experiences are also proven to complement one another. Each team member was strategically selected because of their extensive experience in their field and area of expertise, and previous experience with similar projects.

From our office in North Kansas City we will be able to readily meet with your staff and representatives for planning and design phases, easily attend meetings for any public input, and as any projects move into construction we also intend to manage any construction and project commissioning from this office. Supporting our key personnel is a well-established team of project managers, engineers, surveyors, and on-site project representatives within the McClure organization, available to serve the City as needed.



MATT EBLEN, PE, LEED AP PROJECT MANAGER/STORMWATER ENGINEER

As a Project Manager and Site Designer, Matt has developed an eye at making conceptual site plans into realistic final construction plans, for both large and small sites. Matt's experience allows him to manage the grading and utilities that are a part of every site design. His experience also includes the study, design, and management of stormwater projects. He has overseen the creation and implementation of city-wide stormwater master plans as well as the design and construction of site-specific detention/retention basins. Matt's expertise also includes channel improvements and storm sewer systems and water quality or Best Management Practice (BMP) projects like rain gardens, bioretention basins and wetlands for both planning and design for public and private clientele.

REGISTRATION(S)

PE: KS, MO
LEED Accredited
Professional

EDUCATION

MS, Civil Engineering
University of Kansas
BS, Civil Engineering
University of Kansas

YEARS OF EXPERIENCE

27

RELATED PROJECT EXPERIENCE:

- Cedar Valley Reservoir Auxiliary Spillway Repair, Garnett, KS
- City-Wide Stormwater Master Plan, Liberty, MO
- Liberty North Cates Branch Storm Drainage, Liberty, MO
- Terrace Avenue Channel and Stormwater Improvements, Liberty, MO
- 89th & Lane Channel Improvements, Kansas City, MO
- Oakvale Drive Storm Drainage Improvement, Harrisonville, MO
- On-Call Stormwater Services, Excelsior Springs, MO
- Circle Drive Culvert Improvements, Liberty, MO
- On-Call Storm (Stormwater Plan & Drainage Study Review), Excelsior Springs, MO



PAT KULLBERG, PE, LEED AP SENIOR PROJECT ENGINEER

With extensive experience serving as McClure's Senior Project Engineer and project manager on numerous infrastructure improvement projects, Pat is an asset to any project's development phase. His responsibilities include design services for site layout, hydraulic analysis, stormwater management, green infrastructure design, parking lot design, utility design, and street design. He has provided design and plans for bridges, roadways and residential communities, as well as government, retail, healthcare, educational and religious facilities. Pat also has a thorough understanding of stormwater analysis and design and has performed numerous stormwater management studies for sites of all sizes.

REGISTRATION(S)

PE: KS, MO
LEED Accredited
Professional

EDUCATION

BS, Civil Engineering
University of Kansas

YEARS OF EXPERIENCE

29

RELATED PROJECT EXPERIENCE:

- Lenexa Logistics Centre, Lenexa, KS
- CityPlace Mixed Use Development, Overland Park, KS
- Midwest Gateway Warehouse, Edgerton, KS
- 175th Street Commerce Development, Olathe, KS
- Midwest Commerce Center, Gardner, KS
- Babcock Ground Industrial Distribution Facility, Riverside, MO
- Shawnee Justice Center, Site Development Plan, Shawnee, KS
- Shawnee Parks & Recreation, Administration and Maintenance Facility, Shawnee, KS



AARON GWINNUP, PE TEAM LEADER, ENVIRONMENTAL

Aaron specializes in surface water engineering, stream stabilization and bioengineering, ecological restoration, and upland water quality practices. He has 28 years of engineering, construction, and project management experience. Aaron worked in academia at the Iowa Institute for Hydraulic Research studying phytoremediation and Midwestern water quality. His master's thesis detailed the impact of Midwestern flooding on the Gulf of Mexico "dead zone." His consulting career has included a wide range of projects including environmental permitting and regulatory assistance, stream and wetland restoration, hydraulic modeling, floodplain mapping and permitting, and major civil works such as landfill construction, site development, and conventional stormwater design. He has worked in ten states and has been retained by state agencies, cities, counties, watershed management organizations, and also private entities and NGOs in the implementation of hundreds of water-resources-based projects.

REGISTRATION(S)

PE: IA, MN, WI

EDUCATION

MS, Environmental
Engineering
University of Iowa

BS, Civil and
Environmental
Engineering
University of Iowa

YEARS OF EXPERIENCE

28

RELATED PROJECT EXPERIENCE:

- Iowa City-Riverfront Crossings Park, Iowa City, IA*
- Urbandale Stream Mitigation and Stabilization, Urbandale, IA*
- Thomas Mitchell Park/Camp Creek Stabilization, Polk County Conservation, IA*
- Eagle Park Improvements, Bondurant, IA*
- Coralville Fen NRMP, Coralville, IA*
- Cedar River Crossings Wetland Mitigation Bank, Johnson Co. Conservation Board, IA*
- Biscuit Creek Wetland, Coralville, IA*
- 2nd Avenue East, Iowa River Landing, Coralville, IA*

**Project completed under previous employment*



UTILITY INFRASTRUCTURE DESIGN AND ENGINEERING

YOUR TRUSTED WATER RESOURCE EXPERTS.

McClure has extensive experience working with all sizes of municipalities on a wide range of water treatment and sanitary sewer projects. Water quality is critical to growing strong communities. As populations grow, placing more demands on infrastructure, McClure creates operationally efficient solutions that last. We'll look for ways to make your project more cost-effective, more sustainable for the future, and help increase your financial return. We'll also guide you through the ever-evolving regulations, how to determine rates, and help you navigate the public approval process.

WHERE WE MAKE AN IMPACT:

- Biosolids and Biogas
- Collection System Evaluations and Rehabilitation
- Facility Planning & Feasibility Studies
- Funding, Grants, and Utility Rate Studies
- Industrial Wastewater
- Process and Hydraulic Modeling
- Pump Stations
- Regulatory Assistance and Permitting
- Wastewater Treatment Facilities

PROJECT HISTORY

WATER AND SEWER MASTER PLAN – PAOLA, KS

The City of Paola, Kansas, hired McClure to develop a Master Plan for their water and sewer systems. The City had never had a comprehensive plan prepared and wanted a roadmap for necessary improvements, versus reacting to failures in the systems. This plan took a comprehensive look at the water distribution and storage as well as the sanitary sewer collection and treatment. The study included: evaluation of water use, development of a water system hydraulic model, water system condition and improvement analysis, installation and evaluation of wastewater flow monitors, smoke testing, wastewater system condition and improvement analysis, wastewater treatment facility plan, and development of a five-year prioritized project list. **Reference: Kirk Rees, Public Works Director, City of Paola, 913.259.3620, krees@paolagov.org**



WASTEWATER PLANNING & IMPROVEMENTS – BOONE COUNTY REGIONAL SEWER DISTRICT – BOONE COUNTY, MO

McClure has been assisting the Boone County Regional Sewer District (BCRSD) with multiple projects over the past several years, ranging from planning, technical assistance to upgrades and existing pump stations. There have been multiple planning projects, including the most recent authorized project with BCRSD, the Midway Heights Facility Plan. This project will evaluate the existing Midway Treatment Facility, examine the surrounding treatment facilities, and evaluate the upgrades needed for consolidation to the Midway Facility and the upgrades necessary. In addition to the Midway project, McClure provided a Technical Memorandum to assist the District with the operation of the

City of Sturgeon's Wastewater System. The District started handling operations in the late summer of 2021, and McClure provided an overview of the needed capital improvements to the system ranging in priority from immediate to long-term needs. In 2021, McClure completed the design and construction phase of the rehabilitation of the Shalimar Gardens Pump Station. This project included the lining of 12 manholes in the collection system, replacing the pumps and controls, and site design of the lift station. **Reference: Thomas Ratemann, General Manager, 573.443.2774, tratermann@bcrsd.com**



WASTEWATER SYSTEM IMPROVEMENTS – SHELBYNA, MO

McClure worked in coordination with the City of Shelbina, the Missouri Public Utilities Alliance (MPUA) and the MoDNR to develop and implement an Integrated Management Plan (IMP) for Shelbina's wastewater and water utilities. McClure partnered with MPUA to conduct citizen work sessions allowing their voices to be heard regarding the relative importance of the multiple utility issues facing Shelbina. The IMP provided a method for the City to plan for and address water and wastewater improvements for the City's future viability and quality of life. The project included a complete sewer system evaluation study, preparation of a wet weather operations plan, construction of new headworks and wastewater blending facilities, and an Integrated Management Plan for City utilities.

Reference: Dennis Klusmeyer, City Superintendent, 573.588.4104, administrator@cityofshelbina.com

LITTLE SHOAL CREEK WATERSHED SANITARY SEWER EVALUATION STUDY – LIBERTY, MO

Our SKW team (acquired by McClure in 2018) provided a Sanitary Sewer Evaluation Study (SSES) in the Little Shoal Creek Watershed in Liberty, MO. The watershed is comprised of approximately 73,000 feet of collection system, 17,000 feet of interceptor, and 400 manholes. The scope of work included a public relations program, manhole / lamping inspection, smoke testing, closed-circuit television inspection, dyedwater testing, flow monitoring, GIS sewer map / parcel map database development in ArcView 3.2, effectiveness analysis of alternate remediation and rehabilitation solutions with final recommendations, and installation / training on GIS project file deliverables. The final recommendations proceeded into design and construction phases. **Reference: Contact the City of Liberty, MO**



WATER AND WASTEWATER SYSTEM IMPROVEMENTS – PARIS, MO

Water System Improvements: McClure has assisted the City in preparing its Owners Supervised Program (OSP) for many years. With the most recent update in 2018, McClure was able to assist the City in finding an appropriate funding source for completing the improvements in the OSP by reworking it into a Preliminary Engineering Report (PER) and working with MoDNR to get the City an SRF grant/ loan package that included the first Planning and Design Loan awarded in the state. The project includes completing every OSP improvement as well as replacing all of the water meters in the system to more accurately track water usage and water loss in the

system. The design of the improvements has begun. Wastewater System Improvements: The PER created from the 2018 OSP included recommendations to improve two sewer lines that have been experiencing multiple line breaks and backups in recent years. Our proposal is to replace one of the sewer mains and rehabilitate the other. **Reference: Barb McCall, City Superintendent, 660.327.4630, cityoffice@parismo.net**



WASTEWATER SYSTEM IMPROVEMENTS – MARTINSBURG, MO

McClure worked with the City of Martinsburg through the Missouri Department of Natural Resources' Small Community Engineering Assistance Program (SCEAP) to develop a comprehensive study of the collection and treatment systems. The study included CCTVing of the entire collection system to identify defects. In addition, McClure worked with the Missouri Department of Natural Resources to develop a modification to the land application system to allow the option of a controlled discharge option for the treatment system. This controlled discharge has been approved by the department through the antidegradation process. Martinsburg is pursuing funding for the improvements through the Missouri DNR–SRF program. The

recommended improvements include the installation of an influent pump station to eliminate the hydraulically submerged pipe, the addition of a controlled discharge capacity to the treatment system, and collection system improvements. **Reference: Sharon Welchmeyer, City Clerk, 573.492.6616, martinsburgcityclerk@windstream.net**



WASTEWATER TREATMENT AND PUMP STATION IMPROVEMENTS – HIGGINSVILLE, MO

The City of Higginsville is currently operating four discharging permits with improvements needed on all of the wastewater treatment locations. They needed a comprehensive hydraulic and biological plan to most efficiently comply with the new permit limits, including new limits for ammonia-nitrogen and E. coli. Monitoring for total phosphorus and total nitrogen is occurring, with assumptions nutrient limits would be on the wastewater operating permit in the future. Higginsville wanted to be proactive to design the wastewater treatment facility to meet the assumed forthcoming phosphorus and nitrogen limits. McClure

completed a Facility Plan Amendment to examine six different treatment alternatives and multiple different pump station scenarios to meet the needs of the system. McClure's approach to finding a solution involved flow monitoring to determine existing flows, population projections, and land use potential to determine future flows, and an antidegradation analysis of three final treatment technologies including projected operation and maintenance costs to determine life cycle costs of each system. The most cost-effective approach that provided the most flexibility to the operators is the centralization of the four active permits into wastewater treatment plant headworks, equalization basin for wet weather flows, an activated sludge biological treatment, UV disinfection, and sludge handling. **Reference: Brandon Craig, Water & Wastewater, Superintendent, 660.584.2106, waterplnt@ctcis.net**

NOTE:

Stormwater Infrastructure projects are highlighted in the Stormwater section on pages 32–33.

KEY PERSONNEL

McClure has developed a project team that is not only competent and capable of providing The City of Garnett with an exemplary project, but a team whose experiences are also proven to complement one another. Each team member was strategically selected because of their extensive experience in their field and area of expertise, and previous experience with similar projects.

From our office in North Kansas City we will be able to readily meet with your staff and representatives for planning and design phases, easily attend meetings for any public input, and as any projects move into construction we also intend to manage any construction and project commissioning from this office. Supporting our key personnel is a well-established team of project managers, engineers, surveyors, and on-site project representatives within the McClure organization, available to serve the City as needed.



MICHAEL M. HALL, PE, M.ASCE PROJECT MANAGER

As the Team Leader for McClure's Water/Wastewater Team, Michael is responsible for delivering water, wastewater and stormwater planning, design, and construction projects. He brings nearly 30 years of water and wastewater engineering experience in the Municipal, Industrial and Agricultural market sectors and has a thorough understanding of the KDHE, MoDNR, IDNR, USDA and EPA policies, design standards, and grant process. Michael has gained extensive experience leading design, planning and construction projects in Kansas, Missouri and Iowa. His experience includes contract preparation, manpower allocation, planning, design, cost-estimates, plan review, construction administration, construction management, project startup, troubleshooting, energy efficiency analysis, and quality control. Michael prepares designs, specifications, and construction documents, and collaborates with clients and government agencies to develop funding resources.

REGISTRATION(S)

PE: IA, IL, KS, LA,
MO, MS, OK

EDUCATION

BS, Civil Engineering
Missouri S&T

YEARS OF EXPERIENCE

29

RELATED PROJECT EXPERIENCE:

- New 3.5 MGD Wastewater Treatment Plant, Adel, IA
- Wastewater System Improvements, Phase I – Facility Plan, Phase II – Antidegradation, Phase III – Pump Station Design, and Phase IV – Wastewater Treatment Plant, Higginsville, MO
- SSES, Bowling Green, MO
- WWTP Facility Plan, Bowling Green, Missouri
- Buckeye Solids Separation Project, KCMO Water, Kansas City, MO
- SSES, New Florence, MO
- Collection System Improvements, New Florence, MO
- Facility Plan For Midway Heights WWTP - Boone County Regional Sewer District Wastewater Treatment Plant, Fairfield, IA
- Water and Sewer Master Plan, Paola, KS
- Industrial Growth Plan, Davenport, IA
- Wastewater System Improvements, Phase I and Phase II, Jonesburg, MO
- Wastewater System Improvements, Shelbyna, MO

**REGISTRATION(S)**

PE: IA, KS, MO

EDUCATIONBS, Civil Engineering
University of Missouri,
Columbia**YEARS OF EXPERIENCE**

51

DENNIS STITH, PE QA/QC DIRECTOR

Dennis joined McClure in 1972 and currently serves as a Quality Assurance and Quality Control (QA/QC) Director in McClure's Water Division. His design and project management experience is focused on water and wastewater systems, and specifically includes studies, design, and preparation of specifications for wastewater collection systems, wastewater and water treatment plants, and water distribution systems. As a technical expert for water environment projects, Dennis reviews design details and specifications of projects. He is experienced and knowledgeable in all phases of project development, and he reviews mechanical, electrical, structural, surveying, and civil engineering services as required to meet overall project goals and objectives. Dennis brings his experience to the team and project to assure quality in all aspects of the project and design.

RELATED PROJECT EXPERIENCE:

- Wastewater System Improvements, Phase I and Phase II, Jonesburg, MO
- Wastewater System Improvements, Shelbina, MO
- Water and Wastewater System Improvements, Paris, MO
- Water Treatment Plant PER, Higginsville, MO
- Stormwater System Improvements, Macon, MO
- Macon Municipal Utilities, Phase 1 Storm Sewer Separation and Long Term Control Plan
- Wastewater System Improvements, Mayview, MO
- Boone County Regional Sewer District, Rocky Fork Creek Wastewater Treatment Plant and Pump Station Improvements, Boone County, MO
- E. Randolph County Regional Wastewater Management System Feasibility Study, Randolph County, MO
- Marshall Municipal Utilities, Wastewater Treatment Plant Improvements, Marshall, MO

**REGISTRATION(S)**

PE: MO

Project Management
Professional (PMP)
MO Wastewater A
MO Drinking Water C
MO DS-II Drinking
Water**EDUCATION**BS, MS, PhD (ABD),
Civil & Environmental
Engineering, University
of Missouri-Columbia**YEARS OF EXPERIENCE**

33

GARY CUNNINGHAM, PE, PMP SENIOR DESIGN ENGINEER

Gary provides support and mentoring to McClure's engineering team members, technical assistance on drinking water and wastewater projects, and QA/QC review for plans and reports. Gary's career began in 1990 with the Missouri Department of Natural Resources, where he was the State Engineer for the Public Drinking Water Program, supporting public drinking water systems statewide with technical and engineering assistance. Since his early career with Missouri, Gary has also worked for one of the nation's largest investor-owned utilities as a District Engineer, founded and sold a successful engineering, surveying, and software company, worked in various roles for engineering consultants, and taught environmental engineering courses at the University of Missouri-Columbia. Gary's technical focuses include chemistry as it relates to drinking water treatment and biological processes as it relates to wastewater treatment. He has also taught university level classes in construction project management and natural resources management. Gary is well versed in water and wastewater system designs for both municipal and industrial clients.

RELATED PROJECT EXPERIENCE:

- Wastewater System Improvements, Higginsville, MO
- Boone County Regional Sewer District, Rocky Fork Creek Wastewater Treatment Plant and Pump Station Improvements, Boone County, MO
- Boone County Regional Sewer District, Midway Facility Plan, Boone County, MO
- Wastewater Facility Plan, Martinsburg, MO
- Wastewater System Improvements, Hawk Point, MO
- Wastewater System Improvements, Shelbina, MO
- Wastewater System Improvements, Centralia, MO
- Industrial Pretreatment WWTP Upgrades, Dawn Foods, Mexico, MO
- Distribution System Evaluation and Report, Hawk Point, MO
- Tower and Distribution System Upgrades, Hawk Point, MO
- TEVA Pharmaceutical Potable and Process Water System Improvements, Mexico, MO
- Water Treatment Plant Rehabilitation, Yates Center, KS
- Drinking Water System Evaluation and Rate Study, Hermann, MO



JOSEPH KELLINGER, PE, ENV SP PROJECT ENGINEER

Joseph serves as a Project Engineer for distribution and collection system projects. He brings 8 years of water and wastewater related project management experience, including several municipal projects. Joseph has also earned the Envision Sustainability Professional (ENV SP) designation from the Institute of Sustainable Infrastructure (ISI). Joseph is familiar with many of the common obstacles to infrastructure projects experienced by both large and small municipalities and is dedicated to delivering a high value project to the client that addresses appropriate levels of sustainability. He has managed projects from project inception to construction completed, some with construction costs of millions of dollars. Joseph values strong collaboration between the project team, owners and operators, and the community and is committed to a successful project for all stakeholders.

REGISTRATION(S)

PE: IA, KS, MO, TX

Certified Envision
Sustainability
Professional

EDUCATION

BS, Mechanical
Engineering
University of Missouri

YEARS OF EXPERIENCE

8

RELATED PROJECT EXPERIENCE:

- Skidmore Wastewater System Study, Skidmore, MO
- 2022 Water Main Replacements, Kansas City, MO
- 23rd Street Water Main Relocation, Kansas City, MO
- Raw Water System Improvements, Harlan, IA
- Grimes Water System Study, Grimes, IA
- Irvinedale Drive Water Transmission Main, 24" Diameter, Ankeny, IA



ZACK HOWARD PROJECT ENGINEER

Zack recently joined McClure as a Project Engineer. Prior to joining McClure, Zack was a Research Assistant in the CEAE Department at Kansas University. Zack's coursework included municipal water supply and wastewater treatment, biological principles of environmental engineering, water resources, construction project management, computer-assisted building design, and construction engineering. As a Research Assistant, Zack was involved with a Low Dissolved Oxygen Wastewater BNR Pilot, maintaining system integrity, measuring nutrient concentrations, and evaluating microbe activity and health. Zack was also involved with a Microplastics Study of Biosolids Application. He aided in the design, preparation, and execution, extracted soil and run off samples, and filter samples for further analysis. Lastly, Zack extracted COVID-19 mRNA strands from various municipalities' wastewater.

EDUCATION

BS, Civil Engineering
(Environmental Emphasis)
University of Kansas

YEARS OF EXPERIENCE

1

RELATED PROJECT EXPERIENCE:

- Buckeye Creek Pump Station Grit Removal, Kansas City, MO
- Skidmore Wastewater System Study, Skidmore, MO
- Blue River Wastewater Treatment Plant Sludge Line, Kansas City, MO
- Water Main Replacement E. Truman Road to Troost Avenue, Kansas City, MO
- 23rd Street Water Main Relocation, Kansas City, MO



LANDSCAPE ARCHITECTURE

CONNECTING PEOPLE WITH NATURE.

When you think about what makes a city unique, you think of beautiful, natural spaces. Gathering places where people play, catch up or just relax. A little oasis in the middle of a modern world. At McClure, we create and shape vibrant spaces, making your city healthier and more livable. Our pedestrian oriented designs attract 21st century workforce while improving air and water quality.

Whether it's coming up with a master planned vision for your site, or a residential, commercial, industrial, or recreational project, our landscape architecture team offers expertise at every stage. We also excel at 3D modeling, hardscape design, and green infrastructure. Community parks, rain gardens, bioswales, or beautification projects add value and prestige to your city. Create them with a team that adds value to your project all along the way.

WHERE WE MAKE AN IMPACT:

Planning

- Community Planning
- Cost Analysis/ Funding Assistance
- Design/Build Options
- Downtown Redevelopment Planning
- Multi-Modal Facilities
- Park Master Plans
- Preliminary & Final Landscape Plans
- Streetscape Design
- Sustainable Design Concepts

Design

- 3D Modeling
- Community Outreach and Public Involvement
- Design Guidelines
- Green Infrastructure
- Hardscape Design
- Natural Areas/Wetlands
- Parks and Recreation
- Sports Complexes
- Streetscape Design, Complete Streets, and Traffic Calming
- Trails
- Wayfinding/Signage/Monumentation Design

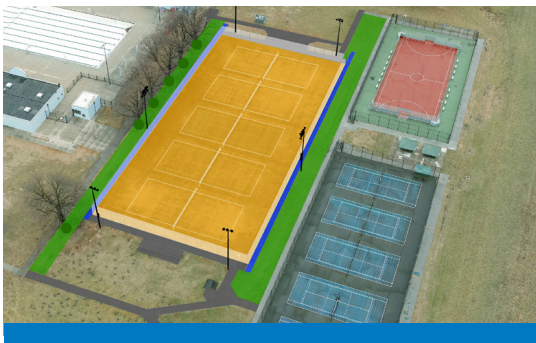
PROJECT HISTORY



PICKLEBALL COURTS – PARKVILLE, MO

Located within English Landing Park, the pickleball courts were added into this important regional park that includes three miles of walking trails, a large playground area, farmers market, two baseball fields, boat ramp, picnic shelters, sand volleyball court and a disc golf course. The project was identified within the 2016 Parks Master Plan as an important addition to both English Landing Park and the entire community. McClure was hired as part of our on-call contract with the city to design and provide construction administration for the pickleball courts. Located along the park road, the four pickleball courts are constructed as two separate slabs of two courts with surrounding fencing. Parking is provided from the adjacent farmers market parking lot located adjacent to an

existing restroom facility. **Reference: Chris Ashley, Project Manager, 816.741.7676, cashley@parkvillemo.gov**



BIRDLAND PARK SPORTS COMPLEX – DES MOINES, IA

McClure was hired to design the demolition of 5 tennis courts and replacement with 7 new tournament worthy tennis courts and 2 new basketball courts. To extend the longevity of the slabs, the City of Des Moines is having McClure design the courts using post-tension cast-in-place concrete. As the city's first attempt with these slabs, the Parks Department is optimistic about this newer technology as they consider upgrades to additional sports courts over the upcoming maintenance periods. McClure is providing site design services, structural design of the tendons and tensioning sequence, stormwater management, fencing design and landscaping. The courts will be used by the North High School athletes and members of the metropolitan community during day and night hours, so efficient lighting is important as glare is detrimental to athletic performance. **Reference: Aaron Graves, Park Planner, 515.248.6355, afgraves@dmgov.org**



COOLEY PARK IMPROVEMENTS – KANSAS CITY, MO

Kansas City completed a master plan in 2018 for this 18-acre park. The existing creek bisects the park with significant topography change on the east side and flat mowed fields on the west side. The master plan promotes a range of amenities and features including sports fields and courts. McClure was hired through a Design/Build contract with MegaKC to complete the first phase of work including 3 soccer fields, trail and parking improvements. Future phases would include a new playground and shelter, 2 volleyball courts, and 2 basketball courts. **Reference: Richard Allen, Deputy Director, KC Parks, 816.513.7713, richard.allen@kcmo.org**



PARKS & RECREATION CIP COST ESTIMATING SERVICES – RAYMORE, MO

The City was completing a Comprehensive Plan Update with a Park and Recreation Master Plan update in house. McClure was hired to support the City's planning process by developing cost estimates for 24 projects within their upcoming FY23-FY27 Capital Improvement Plan and 55 projects identified as future projects listed within their draft Parks and Recreation Master Plan. McClure's landscape architects led the project. Musselman & Hall confirmed many of the numbers based on July 2022 labor rates. The final product included the different cost estimates on a Microsoft Excel spreadsheet for the City's implementation into their planning documents. **Reference: Nathan Musteen, Parks and Recreation Director, 816.322.2791, nmusteen@raymore.com**

KEY PERSONNEL

McClure has developed a project team that is not only competent and capable of providing The City of Garnett with an exemplary project, but a team whose experiences are also proven to complement one another. Each team member was strategically selected because of their extensive experience in their field and area of expertise, and previous experience with similar projects.

From our office in North Kansas City we will be able to readily meet with your staff and representatives for planning and design phases, easily attend meetings for any public input, and as any projects move into construction we also intend to manage any construction and project commissioning from this office. Supporting our key personnel is a well-established team of project managers, engineers, surveyors, and on-site project representatives within the McClure organization, available to serve the City as needed.



JOY RHEA, PLA LANDSCAPE ARCHITECT

Joy is an experienced Landscape Architect with 20 years of experience and a demonstrated history of working in the architecture and planning industry. She is skilled at working with clients, consultants, and city staff to move projects forward through the planning, design review, and approval process. Joy enjoys taking a project and problem solving all aspects of the design from concepts to the best layout of all parts of the project, which includes problem-solving everything from locating a building to grading, drainage, parking, fire access, utility routing, stormwater routing, and plant selection. She has experience in many types of projects, including retail sites, restaurants, retirement centers, single family subdivisions, multi-family sites, infill development, parks and recreation facilities, medical facilities, car dealerships, industrial sites, and many other projects.

REGISTRATIONS

PLA: IA, MO, KS

EDUCATION

BLA, Landscape
Architecture
Kansas State University

YEARS OF EXPERIENCE

20

RELATED PROJECT EXPERIENCE:

- Prospect Hill Conceptual Mixed Use Design, Sioux City, IA
- Gladstone Multi-Family, Gladstone, MO
- Hutton Farms Subdivision, Lawrence, KS*
- Apartments on 6th, Lawrence, KS*
- Aberdeen Apartments, KS*
- Frontier Apartments, Lawrence, KS*
- Jayhawk Club, Lawrence, KS*
- Homestead Retirement Facility, Eudora, KS*
- Kentucky Street Subdivision, Lawrence, KS*
- Bridgehaven Retirement Community, Lawrence, KS*

**Project completed under previous employment*



ANTHONY DePRIEST, PLA LAND USE PLANNER

Anthony has been with McClure since his graduation from Kansas State University where he received a Master of Landscape Architecture degree. He works on pre-planning with site analysis and map creation through sketching and Geographic Information Systems. His experience includes schematic design, planting and hardscape selection in design development, and construction detailing and documentation to make the clients ideas a reality. Anthony is a member of Development Service Group working across multiple disciplines, including planning, transportation, civil site design, and irrigation design. He is proficient in the process of developing and maintaining technical information and data. For this project, he applies geolocated data management techniques to provide efficient design and asset management.

REGISTRATIONS

PLA: MO

EDUCATION

MLA, Landscape
Architecture
Kansas State University

YEARS OF EXPERIENCE

5

RELATED PROJECT EXPERIENCE:

- Birdland Park Sports Complex, Des Moines, IA
- Cooley Park, Kansas City, MO
- Paseo Boulevard Gateway Project Phase II, Kansas City, MO
- Quarry Master Planning, Osceola, IA
- St. Joseph Riverfront Development Master Plan, St. Joseph, MO
- Park University Feasibility Study, Parkville, MO
- TIF Projects - Platte Purchase Drive, Tiffany Springs Road, and Line Creek Parkway with Water and Sewer Extensions, Kansas City, MO
- Sunflower Foundation Master Planning and Construction Documents, Topeka, KS



DANIELLE YATSOOK LANDSCAPE DESIGNER

Danielle is a graduate of the Fay Jones School of Architecture and Design beginning her career at McClure as a landscape designer. Her experiences working as a research assistant within her university allowed her to be a part of projects that ranged from collaborating with local municipalities to coordinating projects virtually with other universities. Focused on using design as an educational tool, since working at McClure she has been involved in projects that utilize green infrastructure to mitigate stormwater issues and enhance public space. The creation of places that reflect the community and ecology around them are what drives her work and approach.

EDUCATION

BS, Landscape
Architecture
University of Arkansas

YEARS OF EXPERIENCE

2

RELATED PROJECT EXPERIENCE:

- Birdland Park Sports Complex, Des Moines, IA
- Cooley Park, Kansas City, MO
- Detention Outdoor Learning Lab, Raymore, MO
- Crapo Park and Historic Cascade Bridge Planning, Burlington, IA
- Municipal Circle Detention Basin Retrofit, Raymore, MO
- Brady Commerce Park Masterplan, Warrensburg, MO
- 43rd Street Corridor Master Plan, Shawnee, KS
- Green Infrastructure/Flood Mitigation Plan, Nogales, AZ*
- Green Infrastructure/Flood Mitigation Plan, Nogales, Sonora*
- Ferncliff Camp and Conference Center Master Plan, Hot Springs, AR*

**Project completed during education*



PLANNING

IMAGINING POSSIBILITIES. BUILDING COMMUNITY.

Where others see a declining community, we see a town with potential. A town where you can shape the future. A place to raise your family and launch a career. A home for the business you've only dreamed about until now. And a place where looking out for your neighbors is the norm.

But if these communities are to reach their potential, they need to look beyond their presumed destination and re-envision their collective future. That's where we come in. With our small town roots and technical expertise, we'll work alongside you to imagine your town's future and chart the path to make it a reality. Whether you need more housing, a refreshed downtown, or an overall vision for your community, we can't wait to help you realize your future.

WHERE WE MAKE AN IMPACT:

- Capital Stack Development
- Community Outreach and Engagement
- Community Relations
- Comprehensive Planning
- Downtown Revitalization
- Economic Development Strategy
- GIS Analysis and Interactive Tools
- Housing Feasibility/Proforma Development
- Housing Needs Assessments and Action Planning
- Market Analysis
- Marketing and Branding
- Neighborhood Planning
- Owner's Representation Services

PROJECT HISTORY



43RD STREET CORRIDOR PLAZA – SHAWNEE, KANSAS

For the corridor east of Highway K-7 along 43rd Street, McClure analyzed the 1.7-mile corridor evaluating the roadway and infrastructure needs to open approximately 48 acres of land for development. Two land use concepts were generated showing options for mixed-use and industrial development. Concept 1 shows a full build out of light industrial along the corridor. Concept 2 shows a mixed-use development similar to vision identified within the City Comprehensive Plan better supporting the increased usage of a future regional destination (Kaw Lake). The development could provide workforce housing and support commercial for the nearby industrial businesses. **Reference: Steve Hauck, City Manager's Office, 913.742.6214, shauck@cityofshawnee.org**



RIVERFRONT LEVEE FEASIBILITY STUDY – NORTH KANSAS CITY, MO

For many years, the road network, development, terrain, levee, lack of sidewalks, and lack of railroad crossings have acted as a barrier to multimodal connectivity in North Kansas City. Imagine bicyclists making their way to important employment designations such as the Paseo Industrial District and Harrah's through a connected sequence of wide pathways. The McClure team is currently working with MARC and the City of North Kansas City to complete a planning process that coordinates well with the North Kansas City Levee District, MoDOT, railroad, and other key stakeholders to eliminate barriers while connecting area residents to the natural environment. Landscape architects at McClure are completing a discovery and analysis process that evaluates scenario and recommend a

proposed concept for a feasible riverfront trail along the Missouri River. By June 2024, a vision will be solidified for the NKC Levee Trail documenting a path forward to reality, enhancing the quality of life for all citizens in the region.

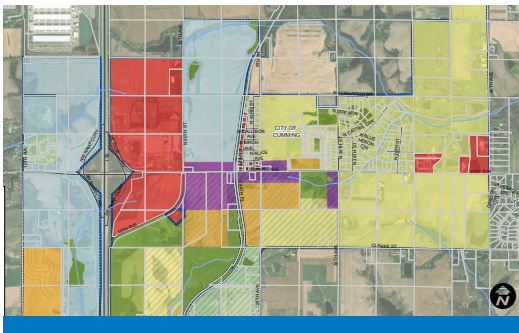
Reference: Xue Wood, Community Development Director, 816.274.6006, xwood@nkc.org



BRADY COMMERCE MASTER PLAN – WARRENSBURG, MO

The Johnson County Economic Development Corporation wanted to further explore opportunities of a 500+ acre site on the eastern edge of Warrensburg, MO. In preparation of hiring McClure, they completed a Market Analysis that recommended a variety of new land uses from light industrial to workforce housing, from neighborhood commercial to R&D technological services. A comprehensive review of all past historical data was performed, as well as, general information such as contextual land development, topography, flood, environmental, development codes, and utilities. With the conclusion of the master plan, insights and direction to how the property might be best laid out were identified. Two different concepts reflected envision an industrial district that is regionally connected

and displays an environmentally respectful, water-forward approach to stormwater management. **Reference: Tracy Brantner, Executive Director, Johnson County MO EDC, 660.747.0244, brantner@growjocomo.com**



COMPREHENSIVE PLAN – CUMMING, IA

McClure worked alongside the City of Cumming and a group of community leaders to develop a lean comprehensive plan, defining a shared vision and path forward for the community. A rapidly growing community on the periphery of the Des Moines metro, the community expressed a strong desire to maintain its rural feeling while still allowing strategic growth. Through a targeted public engagement process, McClure crafted a plan that will simultaneously accomplish both. The plan explores community land use, housing, transportation, parks and recreation, employment and the economy, natural resources and stormwater management, community aesthetics, and public services. Adopted in February 2023, the City already is working to implement the plan. **Reference: Rita Conner,**

City Administrator, 515.980.9214, rconner@cumming.iowa.gov

KEY PERSONNEL

McClure has developed a project team that is not only competent and capable of providing The City of Garnett with an exemplary project, but a team whose experiences are also proven to complement one another. Each team member was strategically selected because of their extensive experience in their field and area of expertise, and previous experience with similar projects.

From our office in North Kansas City we will be able to readily meet with your staff and representatives for planning and design phases, easily attend meetings for any public input, and as any projects move into construction we also intend to manage any construction and project commissioning from this office. Supporting our key personnel is a well-established team of project managers, engineers, surveyors, and on-site project representatives within the McClure organization, available to serve the City as needed.



JOY RHEA, PLA LANDSCAPE ARCHITECT

Joy is an experienced Landscape Architect with 20 years of experience and a demonstrated history of working in the architecture and planning industry. She is skilled at working with clients, consultants, and city staff to move projects forward through the planning, design review, and approval process. Joy enjoys taking a project and problem solving all aspects of the design from concepts to the best layout of all parts of the project, which includes problem-solving everything from locating a building to grading, drainage, parking, fire access, utility routing, stormwater routing, and plant selection. She has experience in many types of projects, including retail sites, restaurants, retirement centers, single family subdivisions, multi-family sites, infill development, parks and recreation facilities, medical facilities, car dealerships, industrial sites, and many other projects.

REGISTRATIONS

PLA: IA, MO, KS

EDUCATION

BLA, Landscape
Architecture
Kansas State University

YEARS OF EXPERIENCE

20

RELATED PROJECT EXPERIENCE:

- Prospect Hill Conceptual Mixed Use Design, Sioux City, IA
- Gladstone Multi-Family, Gladstone, MO
- Hutton Farms Subdivision, Lawrence, KS*
- Apartments on 6th, Lawrence, KS*
- Aberdeen Apartments, KS*
- Jayhawk Club, Lawrence, KS*
- Homestead Retirement Facility, Eudora, KS*
- Kentucky Street Subdivision, Lawrence, KS*

**Project completed under previous employment*



BETHANY WILCOXON, AICP COMMUNITY PLANNER

Bethany is a Senior Advisor at McClure, where she leads the community development team, developing and guiding cross-discipline planning opportunities that enhance the quality of life in Upper Midwest communities. Throughout her career, Bethany has conceptualized, designed, and facilitated dozens of cross-sector efforts aimed at enhancing community well-being. These efforts have ranged in scale from towns of a few hundred people to the entirety of Central Iowa and have spanned the full spectrum of topics, ranging from walkability to housing to water quality to mental health. Bethany honed her ability to navigate complex political situations to drive community development during her time as Capital Crossroads Director and as a transportation planner at the Des Moines Area MPO. She is skilled in working with technical experts to define project solutions, with elected officials to develop and adopt public policy, and with the business community to rally support and financial resources to implement projects.

REGISTRATIONS

American Institute of
Certified Planners

EDUCATION

Graduate Certificate,
Geographic Information
Systems
Iowa State University

BS, Community and
Regional Planning
Iowa State University

YEARS OF EXPERIENCE

14

RELATED PROJECT EXPERIENCE:

- Downtown Burlington Action Plan, Burlington, IA
- Imagine Iowa Great Lakes, Okoboji, IA
- Mason City Housing Initiative, Mason City, IA
- Iowa Water Trails, Des Moines, IA
- Ankeny Transit Study, Ankeny, IA
- Creative Placemaking Strategy, Stanton, IA
- Placemaking Action Plan, Hardin County, IA
- The Tomorrow Plan, Des Moines, IA*

**Project completed under previous employment*

C. RATE SCHEDULE

McCLURE ENGINEERING HOURLY RATE SCHEDULE

Effective through December 31, 2024. Rates are subject to change based on billing rates for future years.

SCOPE ITEM	HOURLY RATE
Principal	\$270 - \$295
Project Manager	\$185 - \$230
Senior Professional	\$185 - \$285
Professional	\$155 - \$185
Junior Professional	\$125 - \$155
Senior Technician	\$155 - \$175
Technician	\$115 - \$135
Landscape Architect	\$125 - \$160
On-Site Representative	\$115 - \$155
Client/Project Liaison	\$135 - \$185
Administrative	\$65 - \$85
Public Relations	\$115 - \$150
3 Member Survey Crew	\$280
2 Member Survey Crew	\$210
1 Member Survey Crew	\$135

EQUIPMENT

3D Scanner per Scan	\$30.00
Photogrammetry Drone per Flight	\$125.00
LiDAR Drone per Flight	\$250.00
Sonar Boat	\$125.00

MISCELLANEOUS EXPENSES

Survey Vehicle Mileage	\$0.75/Mile + \$0.15 fuel surcharge
Automobile Mileage (at current IRS rate)	Current IRS Rate
Printing	Per Contract
Survey Supplies (Hubs, Laths, Paint, Nails, etc.)	Per Contract
Out-of-Pocket Expenses (Meals, Hotels, etc.)	Per Contract



Statement of Qualifications

City of Garnett, Kansas

December 7, 2023





December 7, 2023

Travis Wilson, City Manager
City of Garnett
131 W. 5th Avenue
Garnett, KS 66032

Many citizens rely on the City for convenient access to safe public services. Midwest Engineering Group (Midwest) understands the demands of the general public and their reliance upon safe, affordable, easily-accessible systems. Midwest families live, shop and worship in the area and your customers are our friends and neighbors ~ we will treat them the way we want to be treated. We will provide the City with professional engineering and consulting services to efficiently meet the public's demand, respectfully and conscientiously. We believe we can add significant value to your team for the following reasons:

Attention to detail with high accuracy: Our designers have on-the-ground practical experience and understand constructability issues. We design systems that can be built effectively and efficiently. This depth of knowledge results in a high level of accuracy in design and maintaining project schedules that meet industry standards.

Client Relationships: Midwest is a small firm which allows us to provide personal communication and a level of service that meet the project requirements. We strive for constant communications - a key component for project success. Our abilities will be strengthened by maintaining a positive relationship with you.

Value to Clients: We believe this is achieved by working directly with your staff, the client and the community to recognize challenges and realize solutions. By respecting the opinion of our customers, our partnership will continue to provide value to the community.

The engineering firm you choose is an important decision. When you choose Midwest, you are putting your faith in reliable, dedicated people striving to provide you with intelligent and practical engineering solutions. Our common sense approach produces workable, constructible, value-driven design projects.

At Midwest, we value traditional American principles of honesty, integrity, respect, and hard work. We invite you to read through our qualifications and call our previous clients. Like them, you need results, and that's what we provide. We're a results-based company and ultimately, so are you. Thank you for the opportunity to present our statement of qualifications. We look forward to working with you.

Sincerely,

Daniel L. Coltrane, P.E., Owner
Midwest Engineering Group



When you think Midwest, think intelligent, practical engineering solutions.



We transform and improve communities.

From pre-planning to design to construction administration services, our comprehensive civil design expertise ensures our clients have access to safe, affordable drinking water. Our services include site layout, stormwater management, wetland mitigation, permitting, utility coordination, water distribution and treatment systems.



We prevent pollution and keep communities safe.

We work with communities to prevent byproduct pollution from community activities including domestic wastewater from households, municipal wastewater from communities, or industrial wastewater. Our engineering expertise extends to wastewater treatment facilities, erosion management, and inflow and infiltration prevention.



We propel communities into the future.

We ensure communities are able to provide safe and environmentally compatible development that allows efficient movement of people and goods. We excel at planning, design, construction, maintenance, and operation of transportation facilities. Our experience consists of arterials, utilities, rural and urban transportation, bridges, culverts, and parking solutions.



We power communities forward.

Our experience in energy transmission and distribution pipeline solutions ensures the operational delivery of hydrocarbons. The successful energy projects we complete carry products from gathering to transmission to distribution systems to individual consumers so that communities always have the on-demand energy they need to thrive and prosper.

Office Locations



we transform communities

Midwest Engineering Group is a contemporary engineering company utilizing modern technology to connect our talented individuals and qualified professionals wherever their physical location. With our main office in Tulsa, Oklahoma we are able to serve our clients with valuable solutions from our headquarters and our satellite offices throughout Oklahoma, Kansas, and Missouri. We have embraced networking technology and the benefits of virtual and remote offices. This approach allows us to stay connected and problem-solve daily through sharing, viewing, and discussing relevant client solutions, data, and information. Our employees are empowered to implement practical solutions and are always accessible and available beyond the normal 9-5 workday. This enables us to respond quickly and efficiently to customer needs, provide high-quality service, and produce a better overall product for our customers.

Midwest Engineering Group employees are equipped with state-of-the-art computers and up-to-date software and equipment resulting in outstanding levels of performance. We utilize the following software: Autodesk AutoCAD Civil 3D for grading and water & sewer design; Autodesk InRoads for 3d Modeling & fly through software & conceptual design; Autodesk Navisworks, a clash detection software; Autodesk Plant 3d for 3d modeling of piping, bill of materials, P&IDs, isometrics, etc.; Bentley Flowmaster for drainage calculation; Bentley WaterGEMS, a water modeling software; ESRI ArcGIS; QGIS, an open-source GIS software; Stahls' Cadworx for 3d modeling of piping, bill of materials, P&IDs, isometrics, etc.; Autodesk ReCap, a point cloud software; Autodesk FormIt -3d drawing and visualization software; Autodesk Vehicle Tracking software; BlueBeam Revu; Google Earth Pro; Microsoft Office Suite: Word, Excel, PowerPoint, Access, etc.; various photo and video editing software including Gimp, Pinnacle Studio, and Sketchup, Adobe Suite including Photoshop, Illustrator and InDesign.

We are able to deliver files formatted as .PDF, .DWG for Autocad, or .SHP for ESRI (if specifically requested). We can also provide WaterGEMS model files in .WTG and .MDB formats.

Midwest Engineering Group values traditional American principles of honesty, integrity, respect, and hard work. We are reliable, dedicated people striving to provide you with intelligent and practical engineering solutions. We transform and improve communities.

Water Resources



Municipal and Quasi-Municipal Water Systems

SERVICES:

- Long, short and emergency planning for Municipal, Regional, Rural and Wholesale Water Systems
- Design Memo, Preliminary and Feasibility Reports
- Water Rate and Business Case Analysis
- Regulatory Compliance Strategies and Planning
- Environmental Reports, SWPPP and NOI Permitting
- Public Information and Funding Application Aid
- Water System Hydraulic Modeling and GIS Mapping
- Water System Analysis and Design Including Piping, Pump Stations, Controls and Storage
- Water Storage Analysis and Design
- Water Source - Well, Intake, Purchase Contracts
- Water Treatment Analysis and Design
- 3D Drafting and Modeling for all Booster Pump Stations, High Service Pumps, Filter Galleries, etc.
- GIS, Survey and LiDAR
- Federal, State and Local Permitting
- Easement preparation and acquisition
- Construction Administration
- ACI Certified Construction Observation



Stormwater & Sanitary Sewer Services



we prevent pollution and keep communities safe

We work with communities to prevent byproduct pollution from community activities including domestic wastewater from households, municipal wastewater from communities, or industrial wastewater. Our engineering expertise extends to wastewater treatment facilities, erosion management, and inflow and infiltration prevention.

SERVICES:

- Long, short and emergency planning for Municipal Sewer Systems
- Facility Plans, Master Drainage Plans, and Preliminary Engineering Reports
- Rate and Business Case Studies
- Regulatory Compliance Strategies
- Environmental Reports, SWPPP and NOI Permitting
- Public Information and Funding Application Aid
- Collection System and GIS Mapping
- Lift Stations, Wet Wells, and Controls
- Lagoons and Detention Basins
- Wastewater Treatment Plants
- 3D Drafting and Modeling for Mechanical Equipment and Piping Systems
- GIS, Survey and LiDAR
- Federal, State and Local Permitting
- Easement preparation and acquisition
- Construction Administration
- ACI Certified Construction Observation

Pipelines



Cross Country Pipelines and Gas Distribution Systems

Midwest delivers pipelines that transport oil, natural gas, petroleum products, and industrial gases for government and private customers. Our services include pipeline engineering and management, pipeline design, yard piping design, planning, civil engineering, drafting, GIS, alignments, permitting, bidding, construction, as-builts, integrity, and project management. We have been integral in building more than 1000 miles of PHMSA pipeline and associated assets.

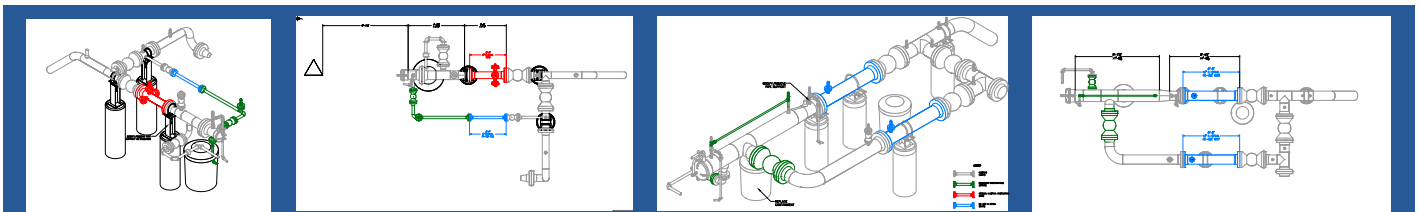
OUR SERVICES:

- Pipeline Engineering, Design and Management
- Alignment Sheets
- Pump and compressor stations
- Site work, Pad layouts, Truck routing
- Integrity Services and Site Layout
- Civil Design
- Regulatory Compliance Strategies and Planning
- Environmental, SWPPP and NOI Permitting
- Water Treatment Analysis Design and Distribution
- 3D Drafting and Modeling for all launchers, receivers, above-ground valves, metering, regulations, etc.
- GIS, Survey and LiDAR
- Federal, State and Local Permitting
- Easement preparation and acquisition
- Construction Administration
- ACI Certified Construction Observation
- Progressive Design Build with CMAR

Midwest Employees* Have Completed Pipeline Projects For The Following Companies:

Oklahoma Natural Gas
Missouri Gas Energy (Spire)
Occidental
Anadarko
Enable
Sem-Group
Dominion

Legacy Integrity
Pipeline Controls & Services
Magellan
Northern Natural Gas
Enbridge
Ruby Pipeline, LLC



*Work completed while employed by another firm.

Land Development Services



Land Developments of the past have shaped how we live, work and play today. Land planning and development for the future requires an understanding of the full scope and impact that developments have on the past and present. Great land planning is crucial to the success and viability of a project. Midwest professionals are experts at realizing the economic advantages of an infrastructure project balanced with the community and environmental benefits. We pride ourselves on integrating environmentally conscious site designs that are economically sustainable.

OUR SERVICES:

- Feasibility Studies
- Drainage Studies
- Site Selection Analysis
- Site Planning and Design
- Surveying
- Zoning and Permitting
- Platting
- Traffic Impact Analysis
- Procedural Requirements
- Community Engagement
- Marketing, Economic Development and Site Visualization Services
- Entitlement Approvals
- Development Approvals
- Master Planning
- Due Diligence Reports
- Program Management
- Rezoning and Special Use Permit Applications
- Preliminary and Final Site Development Plans
- Construction Management
- Erosion Control and Site Grading Plans
- Utility Coordination
- Charrettes
- Land Development Consulting

SUBDIVISIONS COMPLETED BY MIDWEST EMPLOYEES* INCLUDE:

Terrybrook Farms Plat 8
Terrybrook Farms Plat 9
Cedar Ridge Reserve
Wolf Creek Meadows
Mission Ranch South
Terrybrook Farms - 12th Plat
Terrybrook Farms - 13th Plat

Timbers @ Clear Creek - 7th Plat
Bristol Highlands - 2nd Plat
Nottingham Villas
Mission Ranch South, 3rd Plat
Willow Crossings 4th Plat
Willow Crossings 2nd Plat
Parkview Apartments

*Work completed while employed by another firm.

Transportation



we **propel** communities into the future

We ensure communities are able to provide safe, and environmentally compatible development that allows efficient movement of people and goods. We excel at planning, design, construction, maintenance, and operation of transportation facilities. Our experience consists of roads, bridges, arterials, culverts, urban and rural transportation, and parking solutions.

OUR SERVICES.

- Feasibility Studies
- Drainage Studies
- Site Selection Analysis
- ROW & Easement Negotiation and Acquisition
- Site Planning and Design
- Bridge Design
- Inspection of Bridges and Culverts
- Fracture Critical Bridge Inspection
- Rehabilitation of Existing Bridges and Culverts
- Design of Culverts and Prefabricated Structures
- Hydraulic Analysis of Bridges and Culverts
- Load Rating Analysis

Relevant Experience

Owner Contact:
Dustin Rose
P.O. Box 328
Fredonia, KS 66736
(620) 378-3749
drose@pwwsd23.net

Midwest Role:
Engineer of Record

Design Start Date:
October 2018

Construction Start Date:
March 2021

Construction End Date:
February 2023

Design Cost:
\$415,770

Construction Cost:
\$4,759,474

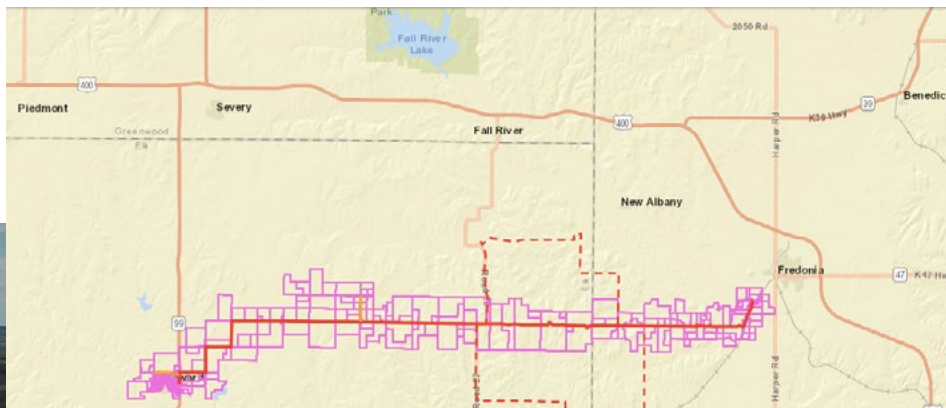
Community Size:
~14,000
.5 MGD

Public Wholesale Water Supply District No. 23 (PWWSD No. 23); Western Expansion Merger Project: 25 mile merger between three entities

In 2018, PWWSD No. 23 asked Danny Coltrane to amend a previous project report submitted to USDA allowing PWWSD No. 23 to provide water supply service to the City of Howard, Kansas and Elk County Rural Water District (RWD) No. 2. The amended project report was successful in officially obtaining USDA funding.

Midwest Engineering Group was contracted to provide consulting engineering services consisting of project design, easement acquisition, permitting, environmental mitigation, easement acquisition, bidding, construction observation and administration for the construction of a 28 mile supply waterline with triplex booster pump station and 400,000 gallon composite elevated water storage tank.

The project consisted of: 6.35 miles of 10" PVC C900 waterline, 18.6 miles of 8" PVC CL200 waterline, 2.61 miles of 4" PVC CL200 waterline, three master meter vaults, valve control vault, gate valves, fire hydrants, PRV, flushing assemblies for pigging waterline, leak detection meter, named creek crossing (bore), KDOT highway crossing (bore), county road crossings (open cut), unnamed tributary crossings (open cut and bore), connections to existing mains and SCADA communication system. This new supply line allows PWWSD No. 23 to serve as the primary water supply source for the City of Howard, Kansas, Elk County, Kansas, and Rural Water District (RWD) No. 2. Project challenges included material delays and subsurface rock.



Owner Contact:
Jerry Bennett
Water District No. 2
Miami County
25290 Harmony Road
Paola, KS 66071
(913) 783-4325

Midwest Role:
Danny Coltrane:
Project Design;
Holly Powers: Project
Management, Contract
and Construction
Administration,
Construction Observation,
Easement Acquisition

Phase I:
January 2019 -
February 2022

Phase II:
August 2021 -
August 2024

Construction Estimate:
\$34,000,000

Community Size:
~22,000
6.7 MGD

Rural Water District No. 2 Miami County, Kansas Water Treatment Plant Improvements Project - Phase I & II Capacity upgrades to pretreatment processes, distribution pumps and storage

Water Treatment Plant Improvements: Midwest Engineering Group (Midwest) is providing consulting services for Rural Water District No. 2 Miami County, Kansas, to evaluate water treatment plant (WTP) upgrades by analyzing discharge flow rates, treatment processes, and system storage requirements. The design includes all system upgrades necessary to bring the WTP up to 12 million gallons per day (MGD) capacity to meet ever growing service requirements. The proposed project budget with recommended improvements presented to Rural Water District No. 2 of Miami County, KS is anticipated to be financed with local funds.

The WTP is located east of Hillsdale Lake at the intersection of 253rd Street and Harmony Road. The current treatment process for the existing plant consists of high rate clarification, a contact basin, and filtration. The original treatment plant was constructed in 1984 and was expanded in 1998 to the present capacity of 6.0 MGD.

Miami RWD No. 2 supplies water to Rural Water District No. 7 in Johnson County, Kansas, (Johnson RWD No. 7) which is currently seeing areas of growth in cities of Edgerton and Gardner triggering additional demands on Johnson RWD No. 7's system. The increased demands/requirement on Johnson RWD No. 7 then in turn increases the demand water needed from Miami RWD No. 2. Miami RWD No. 2's WTP has the capacity to supply Johnson RWD No. 7's increased demands, however, storage for Miami's WTP is limited. To ensure Johnson RWD No. 7 can fill their water demand when needed, Midwest is working in conjunction with Miami RWD No. 2 operators and general contractors to explore cost effective alternatives for additional storage at the existing WTP. Midwest is also providing consulting engineering services to evaluate the addition of a new high service pump station and corresponding wet well in anticipation of long-term growth needs for Miami RWD No. 2.

Distribution and Storage: Miami RWD No. 2 serves approximately 300 square miles in northern Miami County. The distribution system consists primarily of ductile iron pipe and PVC pipe ranging in size from 2-inch to 30-inch in diameter. Treated water is pumped to the distribution system from the WTP by six high service pumps at the treatment plant with a firm capacity of 6 MGD.

In addition to providing drinking water to Johnson RWD No. 7, Miami RWD No. 2 also supplies drinking water to Spring Hill, Edgerton, Miami County RWD No. 1, Miami County RWD No. 4, Franklin County RWD No. 1, and additionally provides backup water supply to Louisburg and Paola.



Owner Contact:
Dustin Rose
P.O. Box 328
Fredonia, KS 66736
(620) 378-3749
drose@pwwsd23.net

Midwest Role:
Engineer of Record

Design Start Date:
May 2018

Design End Date:
January 2019

Construction Start Date:
June 2019

Construction End Date:
August 2020

Design Cost
\$162,752

Construction Cost
\$1,778,009

Community Size:
~14,000
6 MGD

Public Wholesale Water Supply District No. 23 (PWWSD No. 23) Waterline Improvements Project: 20 miles of upgraded lines to increase waterline capacity

Midwest provided upgrades to portions of the existing water mains leading to the various Rural Water Districts (RWD) and cities served by PWWSD No. 23. The current lines were inadequate as approximately only 24 of the 106 miles of existing line were sufficiently sized to meet contractual demands, the rest were under-sized.

To provide the district entities with the volume and pressure of water they need to operate efficiently, Midwest worked with PWWSD No. 23 to prioritize and upgrade several parallel lines totaling approximately 20 miles to service all the district entities; 6.5 miles of 10-inch pipe, 4.5 miles of 8-inch pipe, and 8.5 miles of 6-inch pipe. Upgrading the proposed water lines was a major step that allowed all members of PWWSD No. 23 to take their contracted water amounts and reduce field operation and maintenance costs for operators.

Wilson County #4: Wilson County RWD No. 4, and Montgomery County RWD No. 12's existing booster stations were highly inefficient. The friction loss in the existing pipeline was too great to allow both districts to operate their booster pump simultaneously, and did not provide maximum contract or peak hour flow for either entity. The two districts were not able to take water simultaneously, and had to alternate taking water. Midwest worked with PWWSD No. 23 to install a 6-inch line parallel to the first 7 miles which provided additional water flow to both districts, and reduced friction loss enough to allow Wilson #4 to remove their inefficient booster pump from service.

Neosho/Labette #4 Upgrades : The existing water line serving the Neosho/Labette #4 districts was an 8-inch PVC. Friction loss in the 8-inch pipe prohibited adequate amounts required to fill the District's tower during peak hour demands. The existing line was too small to provide adequate flow to meet demands or future customer growth. Midwest Engineering Group worked with PWWSD No. 23 and Neosho/Labette #4 to install a parallel 10-inch water line.

Wilson #10 Upgrades: One branch of the PWWSD 23 distribution system serves the Wilson #10, Wilson #5, Wilson #11, Buffalo, Woodson #1, and Neosho #12 members. The first three miles of line on this branch were 6-inch PVC. This section of pipe was under-sized, and restricted the District's ability to take water for peak usage simultaneously. Woodson #1 and Neosho #12 were the first to see the effect of these undersized lines. Midwest Engineering Group worked with PWWSD No. 23 and Wilson #10 to install a parallel 8-inch water line that increased water volume, and decreased friction loss. This solution allowed these districts to take water simultaneously and better serve their customer needs.



Owner Contact:
Dustin Rose
P.O. Box 328
Fredonia, KS 66736
(620) 378-3749
drose@pwwsd23.net

Midwest Role:
Const. Administration/
Owner's Representative

Start Date:
December 4, 2017

Est. Completion Date:
October 2019

Const. Administration Fee:
\$800,000

WTP Construction Cost
\$22,626,961

Total Project Cost
\$30,600,000

Construction cost per
production gallon: \$3.77

Public Wholesale Water Supply District No. 23 (PWWSD No. 23); New Water Treatment Plant - Construction Administration

Midwest provided construction administration for a new 6.0 MGD water treatment plant (WTP) that includes over 1,000 horsepower of pumps, three miles of 18", 16" and 12" waterlines, and over one million gallons of storage. The WTP, located approximately two miles southwest of Fredonia, Kansas, serves 20 entities with a population of over 12,000. The existing WTP experienced multiple major renovations, but still had several problems with operation. There were parts of the treatment plant and equipment that were very old and therefore difficult to repair. Fundamental issues with the process was causing high turbidity to enter the gravity dual media filters. Because the water plant was located on the bank of the Fall River, the treatment plant has been flooded three times causing the inability to produce water during the flood and for about a week thereafter during cleanup. PWWSD No. 23's existing water supply system had issues with the water treatment plant's storage capacity and the distribution system's waterline capacity causing it to be unable to meet the current contractual water usage to some of its members.

Through an agreement with PWWSD No. 23, Danny oversaw the construction administration of the new water treatment facility and advised on upgrades and improvements to the distribution system. Consulting services included daily observation, as-builts, photo directory, material testing, submittals, RFIs, change orders, pay applications, adherence to schedule, monthly meetings, reporting, and other activities necessary of an Owner's Representative.

The new facility allows PWWSD No. 23 to meet current demands of its users, as well as meet demands from merging with additional entities and anticipated future growth.



Owner Contact:
Ryan Follmer,
Assistant City Manager
PO Box 907
101 South Lincoln
Chanute, KS 66720
rfollmer@chanute.org
(620) 431-5200

Midwest Role:
Danny Coltrane:
Project Design
Holly Powers:
Project Management

**WTP Design Estimate
(PER Only): \$63,000**

Design Start Date:
April 2021

**Wastewater Collection
System Evaluation
Estimate:**
\$120,000

Design Start Date:
April 2021

City of Chanute, Kansas Water Treatment Plant (WTP) Comprehensive Plan and Professional Engineering Report (PER)



The City of Chanute owns its own water utility serving over 9,000 citizens. The City prides itself on the fact that water distribution and treatment have been a part of Chanute's history since 1894. In 2012, a valve dated 1922 was found during a leak repair. That valve is still working and in use. Civic pride notwithstanding, several areas of the plant are in disrepair and in need of maintenance and upgrades.

Midwest provided consulting engineering services to develop a Professional Engineering Report (PER) to review alternatives for the rehabilitation of the City of Chanute's existing water treatment plant (WTP). The PER will include a financial review, a rate review, and projections, as well as demographics and population projections. The data within the PER will be comprehensive enough to be used for obtaining loans and/or acquiring funding from state and local entities for WTP improvements.

Wastewater Collection System Improvements

The City of Chanute was experiencing inflow and infiltration (I&I) rates 10 to 20 times above the acceptable KDHE levels. Limits are anticipated to be revised by KDHE in 2023 whereby the City will be further out of compliance and face severe penalties.

Midwest is working with the City to develop a 5 to 7-year strategic plan to address deficiencies in the wastewater system. The plan will develop procedures for collecting, processing, and storing attribute data, then identifying and prioritizing inflow/infiltration areas within the wastewater collection system. The collected data will be used to identify deficiencies and prioritize rehabilitation and improvements. The City of Chanute will conduct spot repairs as they are identified. Larger projects will be categorized and completed with all applicable/available loan and grant funds.

To address urgent needs and maximize the City's budget, the improvements will be implemented in phases. The Engineering Design will begin by focusing on the collection system including lift station rehabilitation, gravity line and manhole replacement and rehabilitation. This work will improve the I&I, but will not eliminate it, due to the age of the system. To further reduce I&I in the future, the City will need to develop a procedure for eliminating I&I from the private side of the wastewater collection system. Midwest will then begin the design of Wastewater Treatment Plant (WWTP) main treatment processes including secondary treatment, mechanical biological treatment, and sludge digestion and processing.

Pending 2023 KDHE Permit Regulations, Midwest will work with the City to develop a WWTP Facility Plan/PER to identify and develop treatment alternatives. This will include a projected schedule, operation and maintenance costs, and capital costs to demonstrate the fund-ability of the project. Midwest will begin design on the WWTP headworks including the main lift station, flow measurement, and primary treatment to increase inflow capacity. Next, Midwest will assist the City with the design of the disinfection process including rehabilitating the sand filter and UV system to increase discharge capacity. All new designs will be coordinated with new permit limits from KDHE and new collection flow data.

Owner Contact:
Troy Smith, Operator
PO Box 69
Galesburg, KS 66740
(620) 763-2242

Midwest Role:
Danny Coltrane:
Project Design;
Holly Powers:
Project Management,
Contract and Construction
Administration,
Easement Acquisition

Total Project Cost:
\$20,681,888

Community Size:
3,117
.23-.45 MGD

Rural Water District No. 4 Neosho, Kansas Multiple Projects

Neosho RWD #4 has 354 miles of distribution waterlines in Neosho, Labette and Wilson County that serve 1,247 meters. Midwest Engineering Group has provided engineering services for several years on multiple projects based on a PER and Master Plan developed for their water system dating back to 1965 that experienced high pressure loss and water loss.

Water Distribution System Hydraulic Model Update Project and PER

Midwest Engineering is working with Neosho RWD #4 to upgrade their existing hydraulic model to help the district develop an accurate and representative hydraulic model of the existing water distribution system in order to evaluate overall system performance and operational techniques and to replicate the hydraulic capabilities of the system operation. The updated hydraulic model will allow Neosho RWD #4 to plan for improvement that needs to be made to their distribution system to increase water pressure and capacity in certain areas with high demands, determine the cause of various problems within the system, and aid in decreasing water loss. After the hydraulic model is completed Midwest will create a project master plan with cost estimates for Neosho RWD #4 for analysis. The master plan will help them determine which projects are critical and to sustain the current and future water distribution system in a more efficient manner.

Design Start Date: July 2019

End Date: December 2019

Construction Start Date: November 2019

Construction Completion Date: December 2019

Design Cost: \$5,300 (Hydraulic Model Update)

\$4,500 (Master Plan with Cost Estimate)

Loop and Branch Line Improvements Project

Midwest Engineering Group is currently working with Neosho RWD #4 to address a 107 mile waterline improvement project that will replace their outdated 1965 waterlines. Solutions were provided by Midwest in a Preliminary Engineering Report (PER).

Midwest is contracted to provide the following engineering services: Design, permitting, assist in easement preparation and acquisition, SWPPP, Environmental Mitigation, construction administration and construction observation.

The project will increase water pressure and capacity within their existing distribution system. Plans include installing 8", 6", and 4" loop water lines and 6", 4" and 2" branch lines. The project will consist of 6.38 miles of 8", 19.12 miles of 6", 39.44 miles of 4", 39 miles of 2" waterlines, triplex booster pump station, 400,000 gallon elevated water storage tank, KDOT highway crossing, county road crossings, railroad crossing, unnamed tributary crossings, gate valves, fire hydrants, clean-outs, relocation and reconnection of service meters and appurtenances.

Design Start Date: April 2021

Est. Construction Start Date: January 2024

Design Cost: \$1,473,440

Est. Construction Cost: \$18,415,647



Owner Contact:
Troy Smith, Operator
PO Box 69
Galesburg, KS 66740
(620) 763-2242

Midwest Role:
Danny Coltrane:
Project Design;
Holly Powers:
Project Management,
Contract and Construction
Administration,
Easement Acquisition

Total Project Cost:
\$20,681,888

Community Size:
3,117
.23-.45 MGD



Rural Water District No. 4 Neosho, Kansas Multiple Projects (CONTINUED)

Trego and Elk Road Improvements Project

Midwest Engineering Group is contracted to provide the following engineering services: Design, Easement Acquisition, Construction Administration and Construction Observation.

The project will include 5.5 miles of 4" HDPE waterline with HDPE ball valves, flush hydrants, county road crossing (open cut and bore), connections to existing mains, relocation and reconnection of service meters.

This project is funded through Neosho and Labette County ARPA funds

Design Start Date: March 2022
Design End Date: May 2022
Design Cost: \$49,707

Construction Start Date: September 2022
Construction Completion Date: January 2023
Construction Cost: \$52,658

Ottawa Rd and Elk Rd Waterline Upgrades Project

Midwest Engineering provided consulting engineering services to Neosho RWD No. 4 for a waterline upgrade project along Ottawa Rd and Elk Rd in Neosho Co. KS. The District needed to upgrade an existing 2" main along Ottawa Rd, north of Parsons, Kansas, to a 4" main in order to increase capacity to current users in the areas. The upgrade along Ottawa Road consisted of the construction of approximately 4.71 miles of 4" PVC, CL200 waterlines with 1,750 ft of 1" service lines; 30 new water valves; 17 clean outs; 21 relocations of existing water meters with new water meter pits; 10 connections to existing water mains; 13 highway or county road crossings and 7 creek crossings using approximately 3,000 ft of restrained joint casing and carrier pipe.

Neosho RWD #4 desired to install a new 4" PVC, CL200 waterline from Hwy 47 approximately 1.2 miles south along Elk Rd to add an additional supply line to feed into one of their existing distribution waterlines. The extension will consist of approximately 1.4 miles of 4" PVC, CL200 waterline, a new master meter connection with PRV, two (2) county road crossings, and two (2) connections to the existing main.

Design Start Date: June 2019*
Construction Start Date: November 2019
Design Cost: \$6,500 (Design Phase)

End Date: August 2019
Construction Completion Date: December 2019
Estimated Construction Cost Estimate: \$98,000

Neosho RWD #4 Pratt Rd Waterline Upgrades Project

Midwest Engineering provided consulting engineering services to Neosho RWD #4 for a waterline upgrade project along Pratt Rd in Neosho Co. KS. Neosho RWD #4 due to the users experiencing low water pressure. The project will consist of upgrading approximately 3 miles of 2" waterline with 4" PVC, CL200 waterline to increase water pressure in this area, five (5) reconnections to existing meters, three (3) county road crossings, and two (2) connections to existing main.

Design Start Date: September 2019
Construction Start Date: November 2019
Design Cost: \$3,500 (Design)

End Date: September 2019
Construction Completion Date: December 2019
Construction Cost: \$95,213

Owner Contact:
DeWayne Jarred, Operator/
Manager 1890 US Hwy 54
Iola, KS 66749
(602) 380-6153
allenrwd8@gmail.com

Midwest Role:
Danny Coltrane:
Project Design;
Brad Riebel:
Project Management,
Permitting

Design Start Date:
6/13/2019

Construction Start Date:
6/7/2021

Completion Date:
2/1/2022

Construction Cost:
\$529,309

Community Size:
710



Allen County Rural Water District No. 8 (RWD8), Iola, KS Multiple Waterline Improvement Projects

Waterline Improvement Project #1

Midwest Engineering provided consulting engineering services to Allen RWD8 for a waterline upgrade project due to the users experiencing low water pressure. The project consisted of upgrading approximately 5 miles of 3" waterline with 6" CL200 PVC main waterline. It also included installing approximately 0.5 miles of 2" CL200 PVC waterline.

Midwest services consisted of preparing preliminary and final Plan Drawings and Specifications to Client for review and comment. These were then submitted and approved by KDHE in accordance with typical public water supply projects. Midwest also assisted in preparation and filing of applications for construction related permits.

During the Construction Phase, Midwest prepared and reviewed contracts, submittals and RFI's. Midwest personnel conducted periodic inspections to confirm progress for Pay Estimates and Change Orders.

Midwest served as the Construction Inspector for a construction period of 3 months to observe progress and quality of work, including field checks of materials and installed equipment and materials. Services also included providing daily inspection reports tracking quantities installed and field tests conducted for work completed. Finally, Midwest provided the District's Engineer with as-built documentation to develop as-built construction plans.

Waterline Improvement Project #2

The project consisted of upgrading approximately 3.5 miles of 2.5" with 6" PVC water line. Midwest performed duties similarly to the project listed above. This project included upgrades and installation of piping, tracer wire, gate valves, fire hydrants, clean-outs, county road cased/uncased crossings, unnamed tributary uncased/cased crossings, casing pipe, carrier pipe, service meter connections and connections to existing mains.

Midwest also served as the Construction Inspector on the 2nd project for the County.

Owner Contact:
Johanna O'Brien,
City Manager
120 N Ozark Street
Girard, KS 66743
johanna.o@girardkansas.gov
(620) 724-8918

Midwest Role:
Danny Coltrane:
Project Design;
Dustin Berry:
Plant Design;
Brad Riebel:
Distribution Design

PER Start Date:
August 2020

Design Start Date:
March 2023

Expected Completion Date:
September 2025

Total Project Cost:
\$16,693,000

Community Size:
2,500
1 MGD

City of Girard, Kansas Comprehensive Water System Improvements

Midwest Engineering provided consulting engineering services to develop a Professional Engineering Report (PER) for the water treatment plant and supply, water storage and booster pumps and the water distribution system. The PER conforms to state and federal funding agency requirements. It includes budgets and negotiation for underwriting with financial calculations and present worth analysis to determine best alternative. This proactive, prioritized approach allowed the city to take advantage of low interest rates(40 year at 2.125%) and available grant funds.

Midwest provided evaluation based on a GIS system, City maps and records, daily monitoring records, ISO reports, audits and financial records, KDHE minimum design standards, previous engineering studies, and various other documents associated with the sewer collection system and water distribution system.

The design project consists of providing design, bid and construction phase services for a new 1 MGD Water Treatment Plant (WTP). Midwest is designing well rehabilitation, aerator, rapid mixer, clarifier, re-carbonation basin, filters, lime silo/slaker, chemical feed equipment, clear-well, wet well, high service pumps and building, water treatment plant building, plant piping, controls/SCADA, electrical equipment and backup generator and all necessary appurtenances to complete a working water treatment plant. As part of the construction phase services, Midwest will provide a resident project representative for construction observation services during the construction period.

Midwest is replacing all non-PVC distribution and service lines within the city which will allow compliance with new federal EPA lead and copper rules. Midwest assisted the City in securing funding via Rural Utilities Service (RUS) by the State and Area staff of USDA Rural Development (RD) in the form of a loan for \$13,300,000 and a grant for \$3,393,000.



Owner Contact:
Curtis Daniels, Chairman
10515 Highway 59
Erie, KS 66733
(620) 433-2898

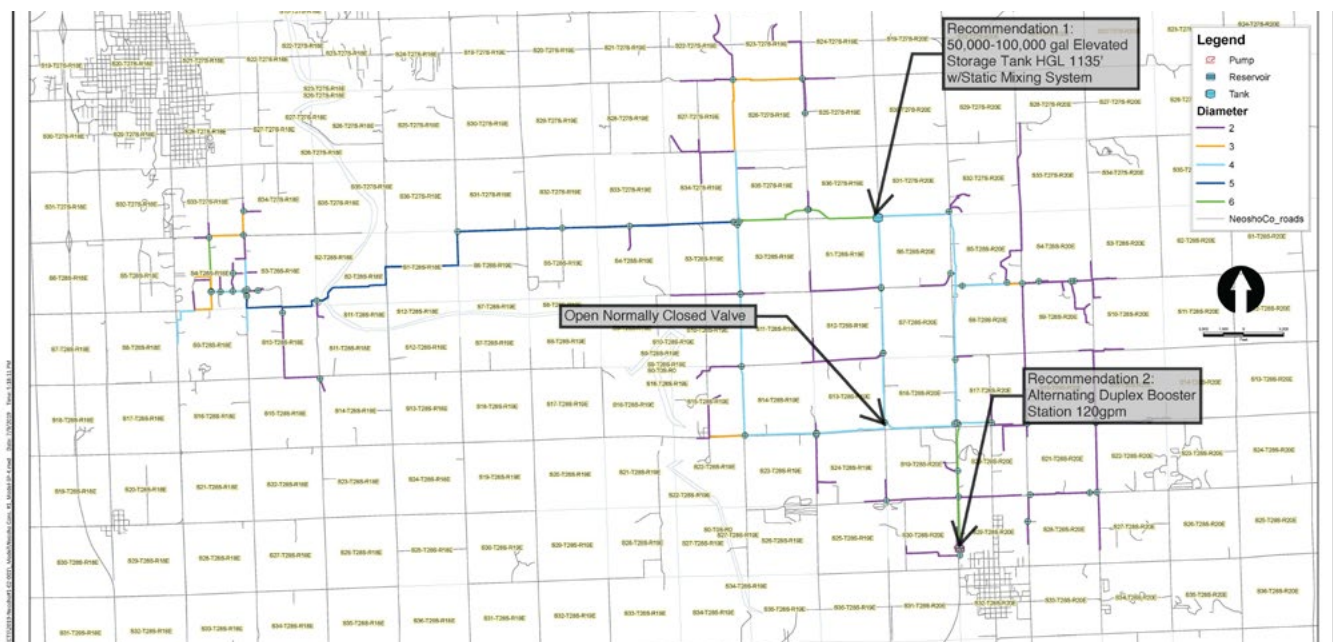
Midwest Role:
Danny Coltrane:
Project Design;
Holly Powers:
Project Management,
Contract Administration,

Neosho County Consolidated Water District No. 1 Neosho County, Kansas Professional Engineering Report (PER) for Elevated Storage Tank

The distribution system for Neosho CCWD No. 1 had difficulty in peak time periods keeping up with customer demands. Midwest Engineering is working with the District to upgrade their existing hydraulic model to help the district develop an accurate and representative model of the existing water distribution system in order to evaluate overall system performance and operational techniques. Midwest incorporates step-by-step calculations that validate the hydraulic model's accuracy and then give recommendations to fix the critical areas that have become apparent within the system as demand increases. The updated hydraulic model will allow the District to plan for improvements that need to be made to their distribution system to increase water pressure and capacity in certain areas with high demands, determine the cause of various problems within the system and to aid in decreasing water loss.

The inability of the District's current system to keep up with demand has resulted in over-use of booster pumps and incurred additional wear and tear on equipment that necessitates continuous operation to compensate. Midwest is working with the District to compare typical usage with KDHE recommendations and recommend a complete solution.

Midwest is exploring solutions with the District including installation of a new elevated storage tank to allow the district to meet current and future demands. The suggested improvements would not only allow the district to meet current demands, but would also allow for foreseeable future growth to sustain current and future water distribution system in a more efficient manner.





Owner Contact:
Joe Kaimann,
Presiding Commissioner
201 Main Street
Troy, MO 63379
636-528-6300
jkaimann@
lincolncountymoclerk.gov

Midwest Role:
Engineer of Record

Design Start Date:
June 1, 2020

Construction Start Date:
April 12, 2021

Construction End Date:
December 6, 2021

Design Cost:
\$106,300

Construction Cost:
\$760,730

Lincoln County, Missouri **Multiple Bridge Replacements**

Phelps Lane (aggregate) over a Tributary to Draper New Bridge 1240006:

Midwest Engineering Group worked with Lincoln County to provide engineering services to replace this Non-NBI Structure. Midwest served as the Engineer of Record and services included bridge hydraulics with full design and drafting. The replacement structure is a 26' long single span, consisting of eight adjacent precast concrete box girders (12"x34") on a 20-degree skew L.A. at 0% grade, no slab topping supported by concrete abutment walls with turnback wings on spread footings keyed into bedrock. The PC Beam was designed using BRASS Girder, concrete abutments & wings and spread footings designed using AASHTO & MoDOT EPG design requirements (HL-93 design + MoDOT legal trucks ratings). The bridge opening was designed using surveyed cross sections of basin, streamstats drainage basin & HEC-RAS, based on 2014 Rural Regression Equations, meeting MoDOT's recommended standard of 1' freeboard for a 25-year event.

Gravens Road (asphalt) over Tributary to Cuivre River New Bridge 2330012:

Midwest Engineering Group worked with Lincoln County to provide engineering services to replace this Non-NBI Structure. Midwest served as the Engineer of Record and services included bridge hydraulics with full design and drafting. The replacement structure is a 26' long single span, consisting of nine adjacent precast concrete box girders (15"x34") on a 20-degree skew R.A. at 2% grade, with slab topping supported by concrete abutment encasing driven steel piling. The PC Beam was designed using BRASS Girder, Concrete abutments & wings, slab topping and driven piles designed using AASHTO & MoDOT EPG design requirements. The bridge opening was designed using surveyed cross-sections of basin, streamstats drainage basin & HEC-RAS, based on 2014 Rural Regression Equations, meeting MoDOT's recommended standard of 1' freeboard for a 25-year event.

Martin Road (aggregate) over Campbell Branch New Bridge 3150002:

Midwest Engineering Group worked with Lincoln County to provide engineering services to replace this Non-NBI Structure. Midwest served as the Engineer of Record and services included bridge hydraulics with full design and drafting. The replacement structure is a 26' long single span, consisting of 8 adjacent precast concrete box girders (12"x34") on a 0 degree skew, 3.5% grade, no slab topping supported by concrete abutment walls with turnback wings on spread footings keyed into bedrock. The PC Beam was designed using BRASS Girder, Concrete abutments & wings and spread footings designed using AASHTO & MoDOT EPG design requirements.



Cooper County, Missouri: Rodeo Drive Sinkhole Remediation & Culvert Installation

A sinkhole along Rodeo Drive caused the roadway to become underwater in large rainfalls and its erosion encroaching the roadway. We worked with a geotechnical engineer and contractor to fill a void under the roadway with 18 c.y. of flowable grout to stabilize the roadway. Once stabilized, we drained the area with the installation of a culvert under Rodeo Drive and an adjacent west field consisting of approximately 402 LF of 36" diameter dual-wall HDPE pipe, 32 LF of 30" diameter dual-wall HDPE pipe, two riser inlets (12" & 30" diameter dual-wall HDPE pipe) and attachments along with filling an adjacent sinkhole. Shortly after the project completion, the area received a large rainfall, which was handled and allowed traffic to pass safely.

Owner Contact:
Cooper County Commission
Danny Larm, Associate
Commissioner
danny.larm@coopercountymo.gov

Midwest Role:
Engineer of Record
Dustin Berry*

Construction Completion Date:
June 2021

Construction Cost:
\$110,000





Owner Contact:
Jeff McCann, P.E.
Chief Engineer
JMcCann@boonecountymo.org

Midwest Role:
Engineer of Record

Construction Completion
Date: December 2022

Construction Cost:
\$455,875

Boone County, Missouri: Sycamore Creek Road Bridge No. 6000005 Replacement

Boone County received a call regarding a deteriorated bridge to a subdivision, but neither the State nor County had any record of it. After reviewing the structure, the structure was closed to traffic and the adjacent low water crossing was the subdivisions only access. With a replacement being a high priority, Boone County and Midwest Engineering Group, LLC worked together to quickly design, bid and construct a new bridge structure. Midwest was able to utilize Boone County's survey data to coordinate, design, permit and prepare final construction documents in approximately 3 months. The new 36' long bridge passes the 25-year flood event and consisted of precast concrete box girders, protective topping slab, geosynthetic reinforced soil approaches and concrete vertical abutments. The County was able to complete construction and open to traffic within the year.

Key Personnel

Daniel L. Coltrane, Jr. P.E., Principal & Owner



Education

B.S. Civil Engineering -
1993
Kansas State University

Professional Registrations

Professional Engineer:
Kansas, Oklahoma,
Missouri

Professional Associations

ACI

As Owner and Principal of Midwest Engineering Group, Daniel Coltrane has more than 30 years of consulting experience. Danny oversees all design work including all phases of land surveying and civil engineering. His range of experience includes all aspects of water and wastewater projects, plat and plan reviews, mapping, hydraulic modeling, oil & gas pipelines, road/ transportation, land development and right-of-way acquisition, construction services, GIS, and studies.

Danny works primarily with municipalities and quasi-municipalities, and has a thorough understanding of regulators and funding administrator operations. He has worked with a variety of funding agencies including private and public sources. Danny's background as a former mayor of a small city uniquely qualifies him to fully address the needs of municipalities. His project experience includes every facet of engineering that a city needs. He takes a multi-discipline approach to his design of water distribution systems, water storage facilities, booster stations, chlorination facilities, control systems and treatment for public potable water systems. Danny is a licensed professional engineer in Kansas, Missouri and Oklahoma. He is a member of the ACI and is ACI certified Grade 1 for field testing concrete and concrete cylinders

Danny has designed and is managing the following relevant projects:

- WTP Improvements Phase I & II-RWD No. 2 Miami County, Kansas;
- WTP Expansion-City of LaCygne, Kansas
- WTP Rehabilitation-City of Chanute, Kansas
- New WTP-City of Girard, Kansas
- Water Line Expansion (7 miles)-RWD No. 2 Allen County, Kansas
- Water Line Expansion, Booster Pump Station, Elevated Storage Tank-RWD No. 4, Neosho County, Kansas
- Multiple Projects-Public Wholesale Water Supply District No. 23 (PWWSN No. 23), KS

Danny has considerable additional project experience available on request.

Dustin Berry, P.E., Design Engineer/Project Manager



Education

B.S. Civil Engineering -
University of Missouri
B.S., A.S. CAD - University
of Central Missouri
A.S. Design/Drafting -
State Tech. College of MO

Professional Registrations

Professional Engineer:
Missouri, Kansas, Iowa,
Oklahoma

NHI Certified In-Service Bridge
Inspector
NHI Certified Fracture Critical
Bridge Inspector
MoDOT LPA Basic Training
OSHA General Industry Certification
OSHA Aerial Lift Safety Training
OSHA Confined Space Training
MODOT Technician Certified -
Concrete Field

As a project engineer for Midwest Engineering Group, Dustin has 18 years of experience and specializes in project management and design for various types of projects and structures. He provides detailed calculations and specifications for the strength and stability of structures for a variety of projects, including bridge & culvert design, roadway design, structural design, rehabilitation and evaluation, stream bank stabilization, and site drainage. Dustin stays abreast of industry best practices and continually researches advanced technology.

Dustin leads his project teams by defining clear goals for all aspects of each project and develops steps for proper execution. He provides detailed specifications for proposed solutions including time and scope involved. Dustin demonstrates flexibility to quickly account for project challenges and manages using best engineering practices balanced with the most cost-effective solution. Dustin routinely collaborates with team members to ensure a plan is in motion to safely build each structure. He manages and oversees construction document preparation for all projects. Dustin also performs site visits for structural evaluations, prepares recommendation reports, and collaboratively works with contractors during the construction process to address questions.

Dustin developed and managed the following relevant projects:

- Bridge No. 6000005 Replacement - Sycamore Creek Rd-Boone County, MO
- Bridge No. 1540003 Replacement - Oakland Lane-Cooper County, MO
- Stream bank Stabilization - Clarksburg Dr-Cooper County, MO
- RCB Culvert Replacement - Eichelberger Dr-Cooper County, MO
- Sinkhole Remediation & Culvert Installation - Rodeo Dr-Cooper County, MO
- Bridge No. 1240006, No. 2330012, No. 3150002 Replacements-Lincoln County, MO:
- Aluminum Box Culvert Replacement; Walnut Dr-Cooper County, MO
- Block Retaining Wall Embankment Stabilization; Ferry Rd - Cooper County, MO
- WTP Improvements Phase I & II-RWD No. 2 Miami County, Kansas;
- WTP Rehabilitation-City of Chanute, Kansas
- Franklin BPS

Brad Riebel, P.E., P.L.S., Design Engineer/Project Manager



Education

B.S. Civil Engineering -
University of Kansas
B.S. Const. Engineering -
Pittsburg State University

Professional Registrations

Professional Engineer &
Professional Land Surveyor:
Kansas

LSIT: State of Missouri

ACI Certifications:

Concrete Field Testing Technician
– Grade I

Brad Riebel is a Professional Engineer and a Professional Surveyor. Throughout his 13-year career, he has served as a surveyor, project manager and designer allocating resources, supervising multidisciplinary construction teams, and inspecting completed construction projects. Brad has extensive experience in managing large construction projects with close adherence to construction specifications and standards. Brad routinely performs due diligence on the impact and feasibility of new construction sites. He excels at overseeing all project stages from preliminary layouts to final engineering designs. As a Project Manager, Brad prepares work schedules, and supervises junior engineers, construction managers, workers, technicians, and contractors. Brad is an outstanding senior civil engineer whose expertise results in construction projects that are completed within budget and on time.

Brad's design experience includes various types of land development projects including subdivisions, street and parking lot design, as well as utility design including potable water distribution and sanitary sewer project design. Brad is skilled at surveying new construction sites and assessing existing structures for upgrades. Surveying tasks included overseeing all land surveying activities completed by survey crew.

Brad attends board meetings as required to provide project updates. As a skilled communicator, Brad facilitates discussions with clients as needed on all aspects of the project to maintain schedules and maximize budget allocations. Brad's relevant project experience includes:

- Water Line Improvements Project (6 miles) - Rural Water District No. 8, Allen County, KS
- WTP Rehabilitation - City of Chanute, Kansas
- Waterline Improvements Project (3 miles) - Rural Water District No. 8, Allen County, KS
- WTP Improvements Phase I & II - RWD No. 2 Miami County, Kansas;
- WTP Expansion - City of LaCygne, Kansas
- New WTP-City of Girard, Kansas

Robert Stever, P.E., Design Engineer



Education

B.S. Industrial Engineering
Kansas State University

Professional Registrations

Professional Engineer:
Kansas

Certifications:

KDOT Inspection Roads and
Bridge
Concrete testing
NACE CP 1 TESTER
OSHA 10hr

Robert Stever is a Professional Engineer with over 25 years of experience. He has a broad level of project skill ranging from survey, drafting, design, and construction of roads and bridges. His varied experience includes working with sewer and water projects, which included reviewing other discipline drawings for construction compatibility including electrical, structural, and civil site plans.

Robert routinely reviews general project drawing and designs and his design experience includes various types of projects with work ranging from survey, drafting, design, and construction of civil projects including road and bridges. Robert is also experienced with the design of on site layout for housing and industrial sites. Robert specializes in construction design, engineering, specifications, and hydrostatic testing for cross country pipeline projects throughout the United States.

Robert's relevant project experience includes:

- New WTP-City of Girard, Kansas
- WTP Improvements Phase II-RWD No. 2 Miami County, Kansas
- Multi-year project to review existing pipelines for In-line-Inspection feasibility. Design pipeline modifications and supervise construction drawings to facilitate and modify existing pipelines
- Review pipeline projects for compliance with DOT Part 192 and 195.*
- Design and perform Hydrostatic testing of existing pipelines.*
- Construction inspection for KDOT road and bridge projects*.

* Projects completed with another firm

Jeff Zimmerman, P.E., Design Engineer/Project Manager



Education

B.S. Civil Engineering -
Iowa State University

Professional Registrations

Professional Engineer:
Kansas, Missouri, Iowa

LEED GREEN ASSOCIATE
OSHA 30 hour certification
for Construction Safety &
Health

Lenexa Toastmasters Past
Vice President, Membership

Jeff Zimmerman is a Professional Engineer and a LEED Green Associate with more than 12 years of civil engineering experience. He has a broad level of project skill ranging from stormwater management studies to full design of storm sewers, streets, and roundabouts.

As a Project Manager, Jeff ensures project feasibility through continual evaluation of design practicality measured against allocated resources. Jeff demonstrates his management abilities on various civil engineering projects by effectively communicating with colleagues and other team members to ensure maximum cohesion and fluidity on projects. Jeff has an aptitude for forecasting design and construction time frames. He delivers quality projects to each client and continually inspects project sites to ensure they meet relevant codes and are progressing properly.

Jeff is proficient in standard engineering software including AutoCad Civil 3D, Autodesk InRoads, Bluebeam, Sketchup, Navisworks, Kyrkthea and Prezi and enjoys working with clients to helping them visualize their ideas through 3D modeling and animation.

Jeff's relevant project experience includes:

- Water Line Improvements - RWD #4; Douglas County, KS
- K-68 Water Line Relocation Phase 2 - RWD No. 2; Miami County, KS
- SWRD Water System Improvements - Southwest Regional Water District, Clarinda, IA
- Water Line Expansion (7 miles) - RWD No. 2 Allen County, Kansas
- Water Line Expansion, Booster Pump Station, Elevated Storage Tank - RWD No. 4, Neosho County, Kansas
- K-68 Water Line Relocation Phase 3 - RWD No. 2; Miami County, KS

Holly Powers, Project Manager



Education

B.S. Engineering Tech. -
2003
Pittsburg State University

Professional Registrations

KDOT Certifications:
Basic Inspection
Environmental Inspection
Asphalt Paving Inspection
Concrete Paving Inspection
Structure Inspection

ACI Certifications:
Concrete Strength Testing
Concrete Field Testing Technician
- Grade I

Holly Powers serves as a Project Manager for Midwest Engineering Group. A collaborative team member, Holly's diverse experience includes roles from field operations as a Construction Observer to serving as Project Manager. Her varied duties include client and project management; environmental permit applications; coordination with municipalities, including the preparation of utility agreements using standard forms; development and implementation of road standards and utility permitting for counties and municipalities. Holly is very accomplished at landowner communications during the acquisition and management of easement and right-of-way activities, as well as performing site coordination with regulatory agencies, sub-consultants, and clients.

Holly is proficient at defining project scope, cost estimation, developing specifications; working with construction drawings and plan sets; project bid management including answering questions from contractors during bid process, issuing project addenda and managing bid openings; and providing construction administration, inspection, and construction closeout services.

With over 18 years of technical experience, Holly understands construction and maintenance standards and is adept with Auto CAD, BlueBeam, Auto CAD Civil 3D, Acrobat Professional, Microsoft Office and MasterSpec. Holly has completed the following relevant projects:

- Multiple Projects - Public Wholesale Water Supply District No. 23 (PWWSN No. 23), KS
- WTP Improvements Phase I and Phase II - RWD No. 2 Miami County, Paola, KS
- City of Girard, KS - New West Tower Booster Station Project - Girard, KS
- Waterline Improvements - RWD #4; Neosho & Labette Counties, KS
- WTP Expansion - City of LaCygne, Kansas
- WTP Rehabilitation - City of Chanute, Kansas
- New WTP-City of Girard, Kansas
- Water Line Expansion (7 miles) - RWD No. 2 Allen County, Kansas
- Water Line Expansion, Booster Pump Station, Elevated Storage Tank - RWD No. 4, Neosho County, Kansas

Justin Gorman, Senior CAD Technician



Education

Graduate Level Course -
Drafting Technology:

- AutoCAD
- Civil Drafting with Surveying

1997

Manhattan Area Technical
College

General Studies

1996

Fort Scott Community
College

Justin Gorman is a talented CAD Technician with Midwest Engineering Group with more than 21 years of experience. Utilizing the latest technology, Justin prepares and edits schemata in a prompt manner to create relevant drawings that serve as the baseline for efficient production processes.

Upon identifying the overall scope of project, Justin meticulously checks engineering documents to ensure that they meet the standards and instructions provided by engineer or client. He is instrumental in providing ideas and suggestions on how initial design can be improved. He routinely takes suggestions from builders and engineers to comprehend initial building design and asks questions to determine the need for building specific structures and develop plausible plans accordingly. He is an expert in drafting designs that are budget-friendly and can be followed within the time lines specified

Justin's experience encompasses a broad range of design types including design of sewer systems, street design plans, subdivisions, and drawing legal and topographical surveys. Justin is a flexible employee and has also served as Survey Instrument Man, Temporary Survey Crew Chief, KDOT Asphalt: Paving Inspection, Sanitary Sewer Inspection, and worked on several energy projects. Justin has completed the following relevant projects:

- Multiple Projects - Public Wholesale Water Supply District No. 23 (PWWSO No. 23), KS
- Water Line Expansion, Booster Pump Station, Elevated Storage Tank - RWD No. 4, Neosho County, Kansas
- Water Line Expansion (7 miles) - RWD No. 2 Allen County, Kansas
- WTP Rehabilitation - City of Chanute, Kansas
- New WTP-City of Girard, Kansas
- Oak Street LS Improvements Project - City of Glenpool, OK
- Hickory Street LS Improvements Project - City of Glenpool, OK
- New West Tower Booster Station Project - City of Girard, KS
- WTP Expansion - City of LaCygne, Kansas

Deb Smith, Senior GIS/CAD Technician



Education

A.A. Engineering - 1984
Johnson County Community
College

Professional Registrations

- OSHA 10 Hour Construction Certification
- ArcINFO, ArcCAD, & ArcView
- Python & ModelBuilder
- WaterGEMS (Hydraulic Modeling) by Bentley
- GPS Training by Seiler Instruments

Deb Smith is a Senior GIS/CAD Technician with Midwest Engineering Group with more than 30 years of experience. Deb is an expert at AutoCAD and routinely sets up, drafts, converts, produces and edits plans to create drawings for each project. Deb efficiently provides the project team with updates of Architectural CAD/BIM files for use in design drawings. She is adept at troubleshooting potential problems on plans before they materialize as construction issues. She regularly coordinates with project team members in a respectful and productive manner.

Deb ensures all engineering documents meet current regulatory and industry standards. She listens intently to instructions provided by engineer or client and is always helpful in providing ideas and suggestions on how initial design can be improved. Deb has an eye for detail and ensures that her designs are within each project budget and can be constructed within the timelines specified.

Deb has specialized experience in Geographic Information Systems (GIS). She has completed several courses and utilizes these skills on every project. She also excels at water modeling serving various water districts for the past 10 years. Deb has completed the following relevant projects:

- Water Line Improvements - RWD #4; Douglas County, KS
- WTP Improvements Phase I and Phase II - RWD No. 2 Miami County, Paola, KS
- WTP Rehabilitation - City of Chanute, Kansas
- Gas Distribution System GIS Creation, & Training - City of Chanute, KS
- Ottawa Rd and Elk Rd Waterline Upgrades Project - RWD No. 4 Neosho County, KS
- Pratt Rd Addition Waterline Upgrade Project - RWD No. 4 Neosho County, KS
- Waterline Improvements JO#7/JO#6 Merger - RWD No. 7 Johnson County, KS
- Cedar Niles Waterline Extension Project - RWD No. 7 Johnson County, KS
- Waterline Improvements Project - RWD No. 8 Allen County, Kansas
- Multiple Projects - Public Wholesale Water Supply Dist. No. 23 (PWWSO No. 23), KS
- Water Line Expansion, Booster Pump Station, Elevated Storage Tank - RWD No. 4, Neosho County, Kansas

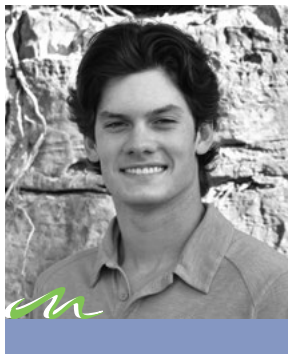
Kevin Frogley, Field Technician Construction Observation



Kevin serves Midwest as Field Technician and Construction Observer. He also provides essential data for GIS mapping and facility inspection on many projects. Kevin has 25 years experience in these areas, and is a tremendous asset to Midwest clients by ensuring their projects are constructed according to design.

Kevin holds a KDHE Class I Wastewater and Class II Water Operator license, K-DOT Certified Inspector, and an ACI Certification as a Concrete Field Testing Technician Grade 1.

Landon Doosing, Engineering Technician & Construction Observation



Landon is a recent graduate from State Technical College of Missouri and applies his skills as an Engineering Technician with Midwest Engineering Group. He has performed concrete field testing and assisted in construction observation for a large construction project. He is also engaged in drafting work for several design projects. Landon is a Missouri native, and eager to serve local communities.

Landon holds an ACI Certification as a Concrete Field Testing Technician – Grade 1.

Dustin Worthington, Engineering Technician & Construction Observation



Dustin comes to Midwest as a seven-year United States Army Veteran with significant experience maintaining diesel vehicles and aircraft. He is highly trained in replacing, and repairing a wide range of equipment. His experience with inspection, testing, diagnosing and problem-solving serve as an excellent foundation for his position as Engineering Technician with Midwest Engineering Group. Dustin has demonstrated his ability to quickly identify, diagnose, and correct diverse problems. He has notable areas of expertise including input and upkeep of daily maintenance logs.

Dustin was instrumental in training his team instructing them on mechanical skills and procedures with an emphasis on safety precautions and procedures. He routinely inspected, serviced, maintained, and tested aircraft and material handling equipment systems, subsystems, and components, therefore increasing operational readiness of the fleet. Dustin supervised and performed maintenance, repair, and recovery operations for the organization's aircraft fleet valued at over \$650 million.

He is currently engaged in drafting for several design projects, and he has performed concrete field testing and assisted in construction observation for a large construction project.

Southeast Kansas Experience

We are experienced with securing funds from many levels of government and private sources. We are familiar with regulatory requirements, including documentation guidelines for U.S. Department of Agriculture Rural Development (USDA-RD), U.S. Economic Development Administration (EDA), Community Development Block Grants (CDBG), and Federal Emergency Management Association (FEMA) to name a few. We will work with you to explore all possible funding options and secure the maximum amount of funding available with the best consideration of interest rate and term obtainable.

Midwest has successfully secured over \$108,000,000.00 in aid, grants, or loan assistance for projects of our clients.

Current Funding for Facilities - Midwest Projects

Client	Funding Source	Amount	Interest Rate	Term
RWD No.2, Miami County, KS	State Revolving Fund (SRF)	\$38 million	1.58%	30 years
PWWSD No. 23, Fredonia, KS Treatment Plant	USDA Funding 45% Grant	\$25 million	1.875% and 3.25%	40 years
PWWSD No. 23, Fredonia, KS, Western Expansion Line Project	USDA Funding 65% Grant	\$5.5 million	1.875%	40 years
City of Girard, Kansas Water	USDA Funding 25% Grant	\$16.6 million	2.125%	40 years
City of Girard, Kansas Sewer	CDBG Funding 40% Grant	\$1.4 million	n/a	n/a
RWD No. 4, Douglas County, KS	Funding Pending (Loan)	\$4 million	2.25%	40 years
RWD No. 4, Neosho KS	USDA Funding 25% Grant	\$23 million	1.875%	40 years
TOTAL		\$113.5 million		

The Midwest Team keep ourselves current on the essentials of federal grants and loans practice, from issues affecting agency decisions, to the award and administration of grants and loans. Each year the federal government awards millions of dollars to state and local government, universities, hospitals and non-profits, and corporations. The selection of programs and recipients is not governed by the traditional rules of government contracting.

We have extensive experience with many legal mechanisms for formalizing relationships between federal and non-federal entities, such as grants, loans, cooperative agreements, educational partnerships, cooperative research and development agreements, and the various forms of contracts. Our knowledge encompasses:

- Background Information
- Varying Types of Grants versus Loans
- Laws and Regulations
- Competing for Funding
- How/When Award is Administered
- Financial and Compliance Issues
- Bonding
- Interpretation and Litigation

We are experienced at navigating the complicated, diverse, and often agency- and program-specific field of federal loan and grant practice. We can assist you with:

- The laws and regulations governing grants, loans, SRF agency authorities, and programs.
- The interpretation, types, and legal nature of grants, loans, and cooperative agreements in comparison to other instruments.
- The funding selection process, with strategies for submitting competitive applications.
- Strategies for combining a grant with a loan if necessary to keep project costs reasonable.
- Managing the award, to include compliance with award conditions and the applicable regulations.

Rural Water District Experience

Engineers and Technicians from Midwest have worked with Rural Water Districts and small municipalities in Kansas for the past 30 years. They have provided assistance on all manner of projects from simple consultation, engineering reports, feasibility studies and line extensions to full system Master Planning, Design and Construction. Midwest has provided Engineer of Record Services on multiple projects during all phases of development for water distribution, storage or new Water Treatment Plants including sourcing funding, obtaining right-of-way from land owners, design conceptualization, construction and operator training. Most projects come to Midwest through past client referrals. In the past five years alone, Midwest has interacted with clients on over 300 projects.

Danny Coltrane has successfully completed over 250 projects for more than 60 Rural Water Districts and small municipalities in four states. Prior to founding Midwest, Danny served as Staff Engineer for the Public Wholesale Water Service District No. 23 in Fredonia, Kansas. In this capacity, he worked directly with the contractor and operating staff of the District daily and served in an on-site advisory capacity to provide oversight and management during the construction of a new 6MGD water treatment plant.



Ability to Meet Timelines

It is important for you as an Owner to ensure that the team you select is capable of completing each project for you in a timely fashion. You want to make sure that your project receives the appropriate amount of consideration and that your Engineering Consultant is not distracted by other projects or priorities.

Midwest makes a point of carefully committing our resources to ensure the quality of our work on every project. Our professional reputation and personal pride are at stake and we measure our capacity judiciously to ensure that your project receives the full attention that it deserves. If additional resources are needed, we have partnerships in place to be able to increase capacity as needed and keep projects moving at an increased pace when necessary.

We have evaluated our current workload and scheduling priorities and we have the capacity to ensure that your project will be completed on time, on budget and at the highest level of quality that we can deliver. You have our word on it.



Quality Control / Assurance

At the beginning of each project, Midwest Engineering Group plans and establishes the process-related objectives and determines the processes that are required to deliver a high-quality end product. Our Senior staff each have multiple years of experience, which means they know what challenges can occur on a project and know what steps to take to avoid project pitfalls. They also employ current best practices for every project to ensure the highest quality project.

Due to the size of our company, the licensed Professional Engineers put together the scope of each project. They are responsible for daily monitoring of processes and any modifications to ensure it meets the predetermined objectives. As they are intimately involved throughout the entire project, they are able to quickly implement necessary actions to achieve design improvements.

Through this method, Midwest is able to provide consistent quality control/ quality assurance through the entire project. Quality is integral to every employee's every day work ethic and we pride ourselves on providing workable, constructible, value-driven design projects. At the end of each project, our Senior Professional Engineers conduct a final quality control/ quality assurance analysis.

The steps outlined above are repeated to ensure that processes followed in the organization are evaluated and improved on a periodic basis. This allows us to ensure that every project is designed and implemented with correct procedures. This helps significantly reduce problems and errors in the final product.



Hourly Rate Schedule

2023

Project or Construction Manager

PM6	\$	215.00
PM5	\$	195.00
PM4	\$	160.00
PM3	\$	145.00
PM2	\$	130.00
PM1	\$	115.00

Engineer, Designer, or Planner

E6	\$	230.00
E5	\$	215.00
E4	\$	190.00
E3	\$	150.00
E2	\$	125.00
E1	\$	110.00

Construction Observer or Technician

T6	\$	130.00
T5	\$	120.00
T4	\$	115.00
T3	\$	100.00
T2	\$	95.00
T1	\$	80.00

Administrative Staff/Clerical

A3	\$	90.00
A2	\$	80.00
A1	\$	65.00

Passenger Car, Truck Mileage

PMILE	Based on Federal Guidelines
-------	-----------------------------

Survey Crew

S3 (3 man crew)	\$	230.00
S2 (2 man crew)	\$	175.00
S1 (1 man crew)	\$	115.00

Expenses

EXPENSES	Cost + 10% unless otherwise noted
----------	-----------------------------------

Per Diem

PERD	Based on Federal Guidelines Per Location or Agreed to Rate
------	---

Revision: 7/1/23



CERTIFICATE OF LIABILITY INSURANCE

DATE (MM/DD/YYYY)

11/09/2023

THIS CERTIFICATE IS ISSUED AS A MATTER OF INFORMATION ONLY AND CONFERS NO RIGHTS UPON THE CERTIFICATE HOLDER. THIS CERTIFICATE DOES NOT AFFIRMATIVELY OR NEGATIVELY AMEND, EXTEND OR ALTER THE COVERAGE AFFORDED BY THE POLICIES BELOW. THIS CERTIFICATE OF INSURANCE DOES NOT CONSTITUTE A CONTRACT BETWEEN THE ISSUING INSURER(S), AUTHORIZED REPRESENTATIVE OR PRODUCER, AND THE CERTIFICATE HOLDER.

IMPORTANT: If the certificate holder is an **ADDITIONAL INSURED**, the policy(ies) must have **ADDITIONAL INSURED** provisions or be endorsed. If **SUBROGATION IS WAIVED**, subject to the terms and conditions of the policy, certain policies may require an endorsement. A statement on this certificate does not confer rights to the certificate holder in lieu of such endorsement(s).

PRODUCER Carpenter & Company, Inc. 8301 State Line Road, Ste. G-A Kansas City MO 64114	CONTACT NAME: Ann Talbott PHONE (A/C, No. Ext): (816) 932-9333 E-MAIL ADDRESS: ann@carpcomp.com	FAX (A/C, No): (816) 444-7935
INSURED Midwest Engineering Group, LLC 11094 South 54th Place Sapulpa OK 74066 (918) 264-9405		
INSURER(S) AFFORDING COVERAGE		NAIC #
INSURER A: Houston Casualty Company		
INSURER B: Progressive Casualty Ins Co		
INSURER C:		
INSURER D:		
INSURER E:		
INSURER F:		

COVERAGES AT **CERTIFICATE NUMBER:** Cert ID 29332 (1) **REVISION NUMBER:**

THIS IS TO CERTIFY THAT THE POLICIES OF INSURANCE LISTED BELOW HAVE BEEN ISSUED TO THE INSURED NAMED ABOVE FOR THE POLICY PERIOD INDICATED. NOTWITHSTANDING ANY REQUIREMENT, TERM OR CONDITION OF ANY CONTRACT OR OTHER DOCUMENT WITH RESPECT TO WHICH THIS CERTIFICATE MAY BE ISSUED OR MAY PERTAIN, THE INSURANCE AFFORDED BY THE POLICIES DESCRIBED HEREIN IS SUBJECT TO ALL THE TERMS, EXCLUSIONS AND CONDITIONS OF SUCH POLICIES. LIMITS SHOWN MAY HAVE BEEN REDUCED BY PAID CLAIMS.

INSR LTR	TYPE OF INSURANCE	ADDL INSD	SUBR WVD	POLICY NUMBER	POLICY EFF (MM/DD/YYYY)	POLICY EXP (MM/DD/YYYY)	LIMITS
	COMMERCIAL GENERAL LIABILITY						
	<input type="checkbox"/> CLAIMS-MADE <input type="checkbox"/> OCCUR						EACH OCCURRENCE \$
							DAMAGE TO RENTED PREMISES (Ea occurrence) \$
							MED EXP (Any one person) \$
							PERSONAL & ADV INJURY \$
	GEN'L AGGREGATE LIMIT APPLIES PER:						GENERAL AGGREGATE \$
	<input type="checkbox"/> POLICY <input type="checkbox"/> PRO-JECT <input type="checkbox"/> LOC						PRODUCTS - COMP/OP AGG \$
	OTHER:						\$
B	AUTOMOBILE LIABILITY						
	<input checked="" type="checkbox"/> ANY AUTO			01277846-1 MO	10/24/2023	10/24/2024	COMBINED SINGLE LIMIT (Ea accident) \$ 1,000,000
	<input type="checkbox"/> OWNED AUTOS ONLY			01512873-1 OK	12/05/2022	12/05/2023	BODILY INJURY (Per person) \$
	<input checked="" type="checkbox"/> HIRED AUTOS ONLY			03825324 - KS	06/28/2023	06/28/2024	BODILY INJURY (Per accident) \$
	<input type="checkbox"/> SCHEDULED AUTOS						PROPERTY DAMAGE (Per accident) \$
	<input checked="" type="checkbox"/> NON-OWNED AUTOS ONLY						\$
	UMBRELLA LIAB						EACH OCCURRENCE \$
	<input type="checkbox"/> EXCESS LIAB						AGGREGATE \$
	<input type="checkbox"/> DED <input type="checkbox"/> RETENTION \$						\$
	WORKERS COMPENSATION AND EMPLOYERS' LIABILITY						
	ANY PROPRIETOR/PARTNER/EXECUTIVE OFFICER/MEMBER EXCLUDED? (Mandatory in NH)	Y/N					PER STATUTE
	If yes, describe under DESCRIPTION OF OPERATIONS below		N/A				OTH-ER
							E.L. EACH ACCIDENT \$
							E.L. DISEASE - EA EMPLOYEE \$
							E.L. DISEASE - POLICY LIMIT \$
A	Professional Liability			USS2333687	04/01/2023	04/01/2024	Per Claim \$ 2,000,000
							Aggregate \$ 2,000,000

DESCRIPTION OF OPERATIONS / LOCATIONS / VEHICLES (ACORD 101, Additional Remarks Schedule, may be attached if more space is required)

CERTIFICATE HOLDER

CANCELLATION

For information

SHOULD ANY OF THE ABOVE DESCRIBED POLICIES BE CANCELLED BEFORE THE EXPIRATION DATE THEREOF, NOTICE WILL BE DELIVERED IN ACCORDANCE WITH THE POLICY PROVISIONS.

AUTHORIZED REPRESENTATIVE

Ann Talbott

© 1988-2015 ACORD CORPORATION. All rights reserved.

ACORD 25 (2016/03)

The ACORD name and logo are registered marks of ACORD



CERTIFICATE OF LIABILITY INSURANCE

Acct#: 2755857

DATE (MM/DD/YYYY)

9/18/2023

THIS CERTIFICATE IS ISSUED AS A MATTER OF INFORMATION ONLY AND CONFERS NO RIGHTS UPON THE CERTIFICATE HOLDER. THIS CERTIFICATE DOES NOT AFFIRMATIVELY OR NEGATIVELY AMEND, EXTEND OR ALTER THE COVERAGE AFFORDED BY THE POLICIES BELOW. THIS CERTIFICATE OF INSURANCE DOES NOT CONSTITUTE A CONTRACT BETWEEN THE ISSUING INSURER(S), AUTHORIZED REPRESENTATIVE OR PRODUCER, AND THE CERTIFICATE HOLDER.

IMPORTANT: If the certificate holder is an **ADDITIONAL INSURED**, the policy(ies) must have **ADDITIONAL INSURED** provisions or be endorsed. If **SUBROGATION** IS WAIVED, subject to the terms and conditions of the policy, certain policies may require an endorsement. A statement on this certificate does not confer rights to the certificate holder in lieu of such endorsement(s).

PRODUCER Lockton Companies, LLC 3657 Briarpark Dr., Suite 700 Houston, TX 77042	CONTACT NAME: 888-828-8365 PHONE (A/C, No. Ext): FAX (A/C, No): E-MAIL ADDRESS: INSPERITYCERTS@LOCKTONAFFINITY.COM
INSURED MIDWEST ENGINEERING GROUP, LLC 25-A N MAIN ST SAPULPA, OK 74066-3901	INSURER(S) AFFORDING COVERAGE INSURER A: Indemnity Insurance Co. of North America INSURER B: INSURER C: INSURER D: INSURER E: INSURER F:

COVERAGES**CERTIFICATE NUMBER:****REVISION NUMBER:**

THIS IS TO CERTIFY THAT THE POLICIES OF INSURANCE LISTED BELOW HAVE BEEN ISSUED TO THE INSURED NAMED ABOVE FOR THE POLICY PERIOD INDICATED. NOTWITHSTANDING ANY REQUIREMENT, TERM OR CONDITION OF ANY CONTRACT OR OTHER DOCUMENT WITH RESPECT TO WHICH THIS CERTIFICATE MAY BE ISSUED OR MAY PERTAIN, THE INSURANCE AFFORDED BY THE POLICIES DESCRIBED HEREIN IS SUBJECT TO ALL THE TERMS, EXCLUSIONS AND CONDITIONS OF SUCH POLICIES. LIMITS SHOWN MAY HAVE BEEN REDUCED BY PAID CLAIMS.

INSR LTR	TYPE OF INSURANCE	ADDL INSD	SUBR WVD	POLICY NUMBER	POLICY EFF (MM/DD/YYYY)	POLICY EXP (MM/DD/YYYY)	LIMITS
	COMMERCIAL GENERAL LIABILITY <input type="checkbox"/> CLAIMS-MADE <input type="checkbox"/> OCCUR GEN'L AGGREGATE LIMIT APPLIES PER: <input type="checkbox"/> POLICY <input type="checkbox"/> PRO-JECT <input type="checkbox"/> LOC <input type="checkbox"/> OTHER:						EACH OCCURRENCE DAMAGE TO RENTED PREMISES (Ea occurrence) \$ MED EXP (Any one person) \$ PERSONAL & ADV INJURY \$ GENERAL AGGREGATE \$ PRODUCTS - COMP/OP AGG \$ \$
	AUTOMOBILE LIABILITY <input type="checkbox"/> ANY AUTO <input type="checkbox"/> ALL OWNED AUTOS <input type="checkbox"/> SCHEDULED AUTOS <input type="checkbox"/> HIRED AUTOS <input type="checkbox"/> NON-OWNED AUTOS						COMBINED SINGLE LIMIT (Ea accident) \$ BODILY INJURY (Per person) \$ BODILY INJURY (Per accident) \$ PROPERTY DAMAGE (Per accident) \$ \$
	UMBRELLA LIAB <input type="checkbox"/> OCCUR EXCESS LIAB <input type="checkbox"/> CLAIMS-MADE DED <input type="checkbox"/> RETENTION \$						EACH OCCURRENCE \$ AGGREGATE \$ \$
A	WORKERS COMPENSATION AND EMPLOYERS' LIABILITY ANY PROPRIETOR/PARTNER/EXECUTIVE OFFICER/MEMBER EXCLUDED? (Mandatory in NH) <input type="checkbox"/> Y / N If yes, describe under DESCRIPTION OF OPERATIONS below		N / A	C55797365	10/1/2023	10/1/2024	X PER STATUTE <input type="checkbox"/> OTH-ER <input type="checkbox"/> E.L. EACH ACCIDENT \$ 1,000,000 E.L. DISEASE - EA EMPLOYEE \$ 1,000,000 E.L. DISEASE - POLICY LIMIT \$ 1,000,000

DESCRIPTION OF OPERATIONS / LOCATIONS / VEHICLES (ACORD 101, Additional Remarks Schedule, may be attached if more space is required)

CERTIFICATE HOLDER**CANCELLATION**

For Information

SHOULD ANY OF THE ABOVE DESCRIBED POLICIES BE CANCELLED BEFORE THE EXPIRATION DATE THEREOF, NOTICE WILL BE DELIVERED IN ACCORDANCE WITH THE POLICY PROVISIONS.

AUTHORIZED REPRESENTATIVE



CERTIFICATE OF LIABILITY INSURANCE

DATE (MM/DD/YYYY)

12/5/2023

THIS CERTIFICATE IS ISSUED AS A MATTER OF INFORMATION ONLY AND CONFERS NO RIGHTS UPON THE CERTIFICATE HOLDER. THIS CERTIFICATE DOES NOT AFFIRMATIVELY OR NEGATIVELY AMEND, EXTEND OR ALTER THE COVERAGE AFFORDED BY THE POLICIES BELOW. THIS CERTIFICATE OF INSURANCE DOES NOT CONSTITUTE A CONTRACT BETWEEN THE ISSUING INSURER(S), AUTHORIZED REPRESENTATIVE OR PRODUCER, AND THE CERTIFICATE HOLDER.

IMPORTANT: If the certificate holder is an ADDITIONAL INSURED, the policy(ies) must be endorsed. If SUBROGATION IS WAIVED, subject to the terms and conditions of the policy, certain policies may require an endorsement. A statement on this certificate does not confer rights to the certificate holder in lieu of such endorsement(s).

PRODUCER MICHAEL J TRUPIA (16648) 7136 S YALE AVE STE 218 TULSA, OK 74136-0000	CONTACT NAME: MICHAEL J TRUPIA PHONE (A/C, No, Ext): 918-298-5200 E-MAIL ADDRESS: MICHAEL.TRUPIA@COUNTRYFINANCIAL.COM FAX (A/C, No): 918-935-3419
INSURED 1774045 MIDWEST ENGINEERING GROUP LLC 25 N MAIN ST # A SAPULPA, OK 74066	INSURER(S) AFFORDING COVERAGE INSURER A: COUNTRY Mutual Insurance Company INSURER B: INSURER C: INSURER D: INSURER E: INSURER F:
	NAIC # 20990

COVERAGES**CERTIFICATE NUMBER:****REVISION NUMBER:**

THIS IS TO CERTIFY THAT THE POLICIES OF INSURANCE LISTED BELOW HAVE BEEN ISSUED TO THE INSURED NAMED ABOVE FOR THE POLICY PERIOD INDICATED. NOTWITHSTANDING ANY REQUIREMENT, TERM OR CONDITION OF ANY CONTRACT OR OTHER DOCUMENT WITH RESPECT TO WHICH THIS CERTIFICATE MAY BE ISSUED OR MAY PERTAIN, THE INSURANCE AFFORDED BY THE POLICIES DESCRIBED HEREIN IS SUBJECT TO ALL THE TERMS, EXCLUSIONS AND CONDITIONS OF SUCH POLICIES. LIMITS SHOWN MAY HAVE BEEN REDUCED BY PAID CLAIMS.

INSR LTR	TYPE OF INSURANCE	ADDL INSR	SUBR WVD	POLICY NUMBER	POLICY EFF (MM/DD/YYYY)	POLICY EXP (MM/DD/YYYY)	LIMITS
A	GENERAL LIABILITY <input type="checkbox"/> COMMERCIAL GENERAL LIABILITY <input type="checkbox"/> CLAIMS-MADE <input checked="" type="checkbox"/> OCCUR <input checked="" type="checkbox"/> BUSINESSOWNERS GEN'L AGGREGATE LIMIT APPLIES PER: <input checked="" type="checkbox"/> POLICY <input type="checkbox"/> PRO-JECT <input type="checkbox"/> LOC			AM9353985	10/1/2023	10/1/2024	EACH OCCURRENCE \$ 1,000,000 DAMAGE TO RENTED PREMISES (Ea occurrence) \$ 50,000 MED EXP (Any one person) \$ 5,000 PERSONAL & ADV INJURY \$ 1,000,000 GENERAL AGGREGATE \$ 2,000,000 PRODUCTS - COMP/OP AGG \$ 2,000,000 \$
A	AUTOMOBILE LIABILITY <input type="checkbox"/> ANY AUTO <input type="checkbox"/> ALL OWNED AUTOS <input checked="" type="checkbox"/> HIRED AUTOS <input type="checkbox"/> SCHEDULED AUTOS <input checked="" type="checkbox"/> NON-OWNED AUTOS Covered on Businessowners			AM9353985	10/1/2023	10/1/2024	COMBINED SINGLE LIMIT (Ea accident) \$ BODILY INJURY (Per person) \$ BODILY INJURY (Per accident) \$ PROPERTY DAMAGE (Per accident) \$ \$
A	<input checked="" type="checkbox"/> UMBRELLA LIAB <input type="checkbox"/> EXCESS LIAB DED <input checked="" type="checkbox"/> RETENTION \$ 10,000 <input checked="" type="checkbox"/> OCCUR <input type="checkbox"/> CLAIMS-MADE			AU9353989	10/1/2023	10/1/2024	EACH OCCURRENCE \$ 2,000,000 AGGREGATE \$ 2,000,000 \$
	WORKERS COMPENSATION AND EMPLOYERS' LIABILITY ANY PROPRIETOR/PARTNER/EXECUTIVE OFFICER/MEMBER EXCLUDED? (Mandatory in NH) <input type="checkbox"/> Y / N If yes, describe under DESCRIPTION OF OPERATIONS below		N / A				WC STATUTORY LIMITS E.L. EACH ACCIDENT \$ E.L. DISEASE - EA EMPLOYEE \$ E.L. DISEASE - POLICY LIMIT \$

DESCRIPTION OF OPERATIONS / LOCATIONS / VEHICLES (Attach ACORD 101, Additional Remarks Schedule, if more space is required)

POLICY INFORMATION:

HIRED AUTOS LIMIT AND NON-OWNED AUTOS LIMIT ARE \$100,000 EACH OCCURRENCE SUBJECT TO A \$100,000 AGGREGATE LIMIT

CERTIFICATE HOLDERMIDWEST ENGINEERING GROUP
25-A N MAIN ST
SAPULPA, OK 74066**CANCELLATION**

SHOULD ANY OF THE ABOVE DESCRIBED POLICIES BE CANCELLED BEFORE THE EXPIRATION DATE THEREOF, NOTICE WILL BE DELIVERED IN ACCORDANCE WITH THE POLICY PROVISIONS.

AUTHORIZED REPRESENTATIVE

© 1988-2010 ACORD CORPORATION. All rights reserved.

Engineering Services Proposal

Statement of Qualifications Prepared for the City of Garnett, Kansas

PREPARED BY
Schwab-Eaton, P.A.
101 S. Mill
Beloit, KS 67420
(785) 738-2725



February 2024

TABLE OF CONTENTS

Section A:	Letter of Transmittal
Section B:	Profile of Respondent
Section C:	Proposed Scope of Work
Section D:	Project Timelines
Section E:	Cost Proposal
Section F:	Representative Projects
Section G:	Resumes



February 7, 2024

Travis Wilson
City of Garnett
306 Main Street
Garnett, Kansas 66056

RE: Engineer Services
Statement of Qualifications

Dear Mr. Wilson:

Thank you for the opportunity to present our qualifications for the engineering work as we discussed. Over the course of Schwab-Eaton's 65-year history, we have taken immense pride in our commitment to personal service and our ability to meet a variety of clients' needs in an efficient and cost-effective manner.

The enclosed qualification package contains information about our firm, our experience, and the key personnel that will look forward to working with your team. Our company has extensive experience in both municipal and Kansas Department of Transportation (KDOT) project engineering, planning, surveying, and project funding (grants). We are pleased to provide a high level of service, responsiveness, and engagement to our clients in participating in project coordination, meetings, and all aspects required to see the project from inception to successful completion.

We believe that our extensive experience, staff, and expertise, combined with our knowledge of City and County Management, across all aspects of municipal streets, parks, and utilities, uniquely qualifies Schwab-Eaton to provide professional services to the City of Garnett. Our team greatly appreciates the opportunity to present our qualifications and thank you for your consideration of our services. Should you have any questions, please do not hesitate to contact us.

Sincerely,

A handwritten signature in black ink, appearing to read 'Jeff Shamburg', is written over a light blue horizontal line.

Jeff Shamburg, P.E.

Civil Engineers

Land Surveyors

Landscape Architects

PROFILE OF RESPONDENT:

Schwab-Eaton is a full-service civil engineering firm, with expertise in a wide variety of engineering disciplines. We are a local firm, established in 1957 in Manhattan, Kansas. Schwab-Eaton has been providing engineering services for more than 65 years. Those services include civil engineering, landscape architecture, and surveying primarily oriented toward planning, design, and implementation of the following:

- Municipal Engineering
- Water Supply, Storage and Distribution
- Wastewater Collection and Treatment
- Transportation Systems – Local Roads, Streets, Highways, and Bridges
- Traffic Engineering
- Storm Water Management
- Infrastructure Evaluation and Maintenance
- Airport Planning and Design
- Parks and Recreation
- Track And Field Facilities
- Solid Waste Facilities
- Site Planning and Development – Platting and Infrastructure Design
- Streetscape Beautification
- Land Surveying
- Construction Support Services

As a mid-sized firm, it is through each of our engineers, surveyors, and landscape architects focusing their skills on a few sub-disciplines throughout their careers that allow us to offer expertise in such a wide variety of areas. These capabilities are then shared throughout the company to support work that is being completed to meet the needs of our clients.

Two additional key attributes that support our qualifications to perform the work as your City Engineer are personal service and staff experience. The philosophy at Schwab-Eaton centers on building individual relationships with our clients that are open and honest. As such, it is our responsibility to present you with the engineering facts to assist the city leaders in making informed decisions. It is these decisions that provide the direction to complete the task at hand.

Our firm has four (4) locations in Kansas (Beloit, Manhattan, Salina, and Wichita) allowing us to offer our services in a timely and responsive manner due to the proximity to our clients. Schwab-Eaton's clients choose us because of our dedication and technical capabilities to oversee a broad range of projects. We consider it a privilege to work with a variety of clients on diverse types of projects. If selected, Schwab-Eaton is committed to providing you with the high-quality project you deserve.



Schwab-Eaton understands that each project is unique, so we draw on the knowledge and abilities of various professionals throughout the company to address specific project tasks and questions in performing these services. It is anticipated that a single point of contact be established to learn more about the needs of the City of Garnett and how we can best serve you and your community.

The Schwab-Eaton team is our greatest resource. Our team is comprised of people representing a diverse background related to professional training and experience. Our dedicated staff is committed to providing quality results in a timely, cost-effective manner. As part of the Schwab-Eaton culture, we strive to provide the opportunity to retain staff for the long haul which translates to a stable employment base to serve our clients. Additionally, our Owners are hands on, project-oriented engineers who are directly involved in our projects.

Our staff is comprised of Licensed Professional Engineers, Registered Land Surveyors, Licensed Landscape Architects, and technical support staff with the capacity to provide technical services on an as-needed basis. As part of our culture at Schwab-Eaton, we will not commit to providing services to a client if we do not believe that we can meet their expectations.

As specific projects develop, the appropriate and qualified staff will perform the work. In all cases, the established point of contact will continue to stay involved in all projects, acting as client liaison providing continuity for your staff. Schwab-Eaton staff will perform data collection, report preparation, plan development, specification preparation, permit application preparation, and coordination with outside agencies as appropriate on all projects. Should additional services outside those offered by Schwab-Eaton be required, we will work closely with the city to identify resources that are qualified to provide the needed service.

It is our belief that good communication is the foundation from which a strong relationship can be built. By utilizing a full array of available communication modes, we will endeavor to stay in touch and be responsive to your needs. Beyond regular communication with city staff, often the need arises to communicate with the governing body, advisory boards, regulatory agencies, and local stakeholders. We have experience in making presentations to the commissions/councils and advisory boards, from the simple informal discussion, to report presentation and the formal presentation, which may include computer aided graphics. Additionally, we are well versed in preparing and holding public informational meetings as well as public hearings.

Over the years, we have developed an excellent working relationship with KDHE and EPA officials. Schwab-Eaton is familiar with all funding mechanisms typically utilized by cities to fund improvements and can provide assistance as needed on those various funding opportunities. We are quite familiar with the Community Development Block Grant, State Revolving Loan Fund, and USDA Rural Development Grants and Loans, as well as all the various Kansas Department of Transportation funding sources.

PROPOSED SCOPE OF WORK:

Schwab-Eaton currently provides engineering services to several Counties, Cities, Rural Water Districts and Regulatory Agencies throughout Kansas. As the Engineer, we provide technical assistance and information to address questions posed by the administration and staff. Schwab-Eaton can provide planning studies and engineering reports, grant writing assistance, project design, surveying, project oversight, design review of projects undertaken by outside consultants, contract administration, and construction inspection services. When requested, we attend City Council or Planning Commission meetings to make presentations and/or answer questions from the governing body or the board.

We work closely with city staff to help in managing infrastructure by assisting staff members with evaluating current facilities and identifying improvement and rehabilitation projects. Once projects are identified, we work with staff from project conception to completion.

Schwab-Eaton understands that staff input is extremely important for the success of a project, so we strive to work closely with staff throughout project development, funding applications, preliminary design, land surveys, providing opinions of project costs, providing final design, bidding and construction services to ensure that the end result of the project meets the need of the city. A unique aspect that Schwab-Eaton offers is staff familiarity with City and County Management, specifically economic development and public finance. This allows us to better understand our clients from more than just a project perspective but instead from a more holistic approach.

Schwab-Eaton is proud to offer a vast base of experience to draw from, allowing our firm to be capable of ensuring quality control through all stages of the project. Additionally, we have developed internal checks and balances for all projects that involve comprehensive checklists for survey and design elements, required QC/QA checks by experienced staff for project criteria, design selections, plan drawings, and quantity tabulations including the use of KDOT preferred design tools and software products. Some of the proposed quality control assurances include but are not limited to 1) senior-level staff for all reviews; 2) regular team meetings to discuss status, resolve issues and coordinate efforts; 3) a schedule by task for tracking progress and identifying items that may need special attention; 4) frequent communication with all involved in the study.

Our primary focus is to see that projects are completed in accordance with city policy as well as any other local, state, or federal requirements. Our overall objective is to promote growth while keeping the City's best interests in mind.

PROJECT TIMELINES:

Schwab-Eaton understands that no two projects are alike, so we do not have a "cookie cutter" approach to projects. Instead, we work to assess the needs of the client and focus individualized attention on each project to best meet the goals of the project. The first step in the development of project timelines would be a detailed discussion with city staff and any other key stakeholders to determine a clear and concise project scope of services.

Once the scope is agreed upon, a detailed project timeline will be established. Depending on the project type, this may include any variety of services and milestones such as site visits, monthly meetings, project completion milestones, KDOT or funding agency requirements, or council meetings just to name a few. All required services will be determined in conjunction with the requests of City of Garnett staff as well as coordinated efforts of any regulatory agencies.

COST PROPOSAL:

Schwab-Eaton has two methods of billing for consultation and projects. Many of the smaller, day-to-day questions which can be completed through phone calls/emails typically are billed via invoicing at an hourly rate provided in the on-call contract. For larger projects, which could include surveying, design, bidding assistance, or inspection services, Schwab-Eaton will provide a separate fee and scope of services contract based on the Design-Fee method.

Please see attached Hourly Rate Sheet

REPRESENTATIVE PROJECTS:

City of Sabetha, Kansas

Sanitary Sewer Projects:

- *Wastewater Treatment Plant* – Designed an activated sludge wastewater treatment plant to meet current state effluent regulations.
- *Sanitary Sewer Improvements* – Designed 1.5 miles of 18-inch sanitary sewer main to the new treatment plant.

Roadway Projects:

- *Street Reconstruction* – Designed improvements for the reconstruction of four (4) blocks of concrete streets adjacent to the high school.

Water System Projects:

- *Water System Improvements* – Designed water main extensions to serve new development in the City.
- *Water System Rehabilitation* – Designed several sections of water main replacements for an aging water distribution system.

City of Cheney, Kansas

Development Projects:

- *Cherry Oaks Golf Course* – Prepared a plat to separate the clubhouse area from the remainder of the golf course.

Drainage Projects:

- *Drainage Study* – Prepared a drainage study to evaluate the existing drainage systems within the City and develop a 10-20 year plan for improvements including the consideration of a drainage utility.
- *Cherry Oaks Golf Course* – Prepared a Letter of Map Amendment (LOMA) to remove the shop building from the flood plain.

City of Marysville, Kansas

Community Master Planning:

- *Town Center Plaza* – Prepared prepare a master plan and design drawings for the redevelopment of an abandoned rail line. The project has greatly improved the area, transforming a blighted corridor that divided the city into a series of public spaces that has given the community a place to celebrate. The redevelopment project consisted of a 10' wide concrete bicycle path is located in the center of the corridor with on-street parking provided on either side. Landscaping and concrete pavers line both sides of the path, and vintage lighting, bollards, and site furnishings complete the public space. The bike path extends 1/3 mile south connecting downtown to City Park.

A longer list of representative projects is available upon request.

RESUMES:

Mr. Greg Fief, Vice President of Schwab Eaton, joined the firm in 1997. In addition to his management responsibilities, he actively serves clients by designing and managing their projects. During his career he has been involved with a wide range of projects including residential, commercial, and industrial development, utilities, transportation, and sports facilities. His clients include developers, cities, counties, state agencies, and school districts. Mr. Fief has designed subdivisions in and around Manhattan with their associated water, sanitary sewer, storm water facilities, and paving infrastructure. Many of the neighborhoods in Manhattan, the Blue Township in Pottawatomie County and surrounding communities are the result of his planning and design. Over nearly four decades he has designed and managed projects including streets and utilities, parking lots, site developments, running tracks, athletic fields, stormwater improvements, sanitary sewer collection and treatment systems, and water distribution systems. Prior to joining Schwab Eaton, Mr. Fief had similar responsibilities at Shive-Hattery, Inc. in Iowa City, Iowa. He also served as City Engineer for two communities in east central Iowa.

Mr. Stuart Porter joined Schwab Eaton in 1996 and has served as designer and project manager for municipal and commercial clients. He has been involved in a wide variety of water, wastewater and site development projects. Stuart's first year at Schwab Eaton was as a Field Engineer. In this position he was involved in inspections, testing, and shared project management duties. In recent years, he has devoted an increasing amount of time to project design and management duties. Stuart was employed by Proto Construction and Paving, Inc. of Sedalia, CO, from 2001 to 2003, serving as project manager and estimator for site utility projects. This experience has allowed him to be involved firsthand in the utility construction industry while maintaining an engineering perspective. Prior to that, Mr. Porter worked for two summers as a Civil Engineer Intern with the Kansas Department of Transportation conducting inspections and testing.

Mr. Jeff Shamburg has 18 years of experience working in design, design/build and construction roles in various utility projects, with 12 of those years in various locations for another Kansas consulting firm and two years helping lead a utilities construction firm into new markets. Although Jeff's primary focus is water and wastewater treatment projects, Jeff has designed and managed projects associated with all aspects of water distribution and wastewater collection systems, along with renewable energy, rail, and various economic development projects throughout the United States.



HOURLY BILLING RATES

INCLUDES OVERHEAD AND PROFIT

PRINCIPAL ENGINEER	\$ 200.00	LANDSCAPE ARCHITECT III	\$ 135.00
PROJECT MANAGER	\$ 182.00	LANDSCAPE ARCHITECT II	\$ 121.00
STRUCTURAL ENGINEER	\$ 180.00	LANDSCAPE ARCHITECT I	\$ 112.00
DESIGN ENGINEER V	\$ 168.00	LANDSCAPE ARCHITECT ASSOCIATE II	\$ 97.00
DESIGN ENGINEER IV	\$ 156.00	LANDSCAPE ARCHITECT ASSOCIATE I	\$ 87.00
DESIGN ENGINEER III	\$ 138.00	ADMINISTRATIVE PROFESSIONAL II	\$ 105.00
DESIGN ENGINEER II	\$ 127.00	ADMINISTRATIVE PROFESSIONAL I	\$ 60.00
DESIGN ENGINEER I	\$ 115.00	CONSTRUCTION INSPECTOR IV	\$ 99.00
ENGINEER IN TRAINING (EIT) II	\$101.00	CONSTRUCTION INSPECTOR III	\$ 90.00
ENGINEER IN TRAINING (EIT) I	\$ 87.00	CONSTRUCTION INSPECTOR II	\$ 81.00
2 MAN SURVEY CREW	\$ 160.00	CONSTRUCTION INSPECTOR I	\$ 69.00
1 MAN SURVEY CREW (GPS/ROBOT)	\$ 127.00	DESIGN TECHNICIAN V	\$ 105.00
PROFESSIONAL SURVEYOR III	\$ 116.00	DESIGN TECHNICIAN IV	\$ 98.00
PROFESSIONAL SURVEYOR II	\$ 110.00	DESIGN TECHNICIAN III	\$ 93.00
PROFESSIONAL SURVEYOR I	\$105.00	DESIGN TECHNICIAN II	\$ 88.00
SURVEY CREW CHIEF III	\$ 106.00	DESIGN TECHNICIAN I	\$ 77.00
SURVEY CREW CHIEF II	\$ 79.00	CADD TECHNICIAN III	\$ 69.00
SURVEY CREW CHIEF I	\$ 69.00	CADD TECHNICIAN II	\$ 65.00
SURVEYOR	\$ 66.00	CADD TECHNICIAN I	\$ 58.00
		INTERN	\$ 50.00

Effective November 1, 2023

Schwab-Eaton.com

2/21/2024 4:17 PM

A / P CHECK REGISTER

PAGE: 1

PACKET: 04261 2023 EOY

**** CHECK LISTING ****

VENDOR SET: 01

BANK : POOL GARNETT, KS

VENDOR	NAME / I.D.	DESC	CHECK TYPE	CHECK DATE	DISCOUNT	AMOUNT	CHECK NO#	CHECK AMOUNT
01030	ACCURATE ENVIRONMENTAL LLC I-SU37209	CHEMICALS	R	12/31/2023		762.18CR	085002	762.18
090157	BAUMAN BROTHERS FARMS LLC I-1019233	FLASHER F750	R	12/31/2023		20.99CR	085003	20.99
13024	MAGUIRE IRON, INC. I-4698	WTR TOWER INSPECTION/REPRT	R	12/31/2023		2,484.00CR	085004	2,484.00
05118	PAYLESS CONCRETE PRODUCTS, INC I-56507	MIX/HAULING	R	12/31/2023		715.62CR	085005	715.62
22360	VALIDITY SCREENING SOLUTIONS I-233048	EMPLOYEE BACKGROUND	R	12/31/2023		52.00CR	085006	52.00
23381	WOLKEN PLBG. & ELECTRIC, INC. I-202402148198	COIL W/ TXV DRAIN PAN	R	12/31/2023		4,243.60CR	085007	4,243.60

* * T O T A L S * *

	NC#	DISCOUNTS	CHECK AMT	TOTAL APPLIED
REGULAR CHECKS:	6	0.00	8,278.39	8,278.39
HANDWRITTEN CHECKS:	0	0.00	0.00	0.00
PRE-WRITE CHECKS:	0	0.00	0.00	0.00
DRAFTS:	0	0.00	0.00	0.00
VOID CHECKS:	0	0.00	0.00	0.00
NON CHECKS:	0	0.00	0.00	0.00
CORRECTIONS:	0	0.00	0.00	0.00
REGISTER TOTALS:	6	0.00	8,278.39	8,278.39

TOTAL ERRORS: 0

TOTAL WARNINGS: 0

DEPARTMENT	FUND	VENDOR NAME	DESCRIPTION	AMOUNT_
GOVERNMENT ADMINISTRAT	GENERAL	AMERICAN SOLUTIONS FOR BUSINESS	2023 TAX FORMS	232.99
		APPTEGY, INC	THRILLSHARE MEDIA	3,500.00
			THRILLSHARE MEDIA	720.00
		FAMILY CONCEPTS LTD	LITTLE PEOPLES GUIDE-BOOKS	149.93
		GLEASON & DOTY, CHARTERED	COURT HRS 8.25	1,650.00
		KANSAS MUNICIPAL JUDGES ASSOCIATION	JUDGES ASSOC 2024	25.00
		LONDON, HEATHER R.	JAN/FEB CASES (14)	4,000.00
		PYRAMID FOODS dba COUNTRY MART	WATER	11.97
		RYAN WALTER DBA	JAN 2024 TREATMENT	8.75
			TOTAL:	10,298.64
COMMUNITY DEVELOPMENT	GENERAL	APPTEGY, INC	THRILLSHARE MEDIA	270.00
		RYAN WALTER DBA	JAN 2024 TREATMENT	5.00
			JAN 2024 TREATMENT	15.00
			TOTAL:	290.00
PARKS, RECREATION & CE	GENERAL	APPTEGY, INC	THRILLSHARE MEDIA	450.00
		CRYSTAL LAKE FISHERIES, INC.	FISH (595) LBS (350)	2,187.50
		GERKEN RENT-ALL, INC	CEDAR VALLEY TOILET (6)	627.00
		MILLER HARDWARE	TOOLS,CHEMICAL,DISH SOAP,S	434.85
			TOOLS,CHEMICAL,DISH SOAP,S	18.97
			TOOLS,CHEMICAL,DISH SOAP,S	30.56
			TOOLS,CHEMICAL,DISH SOAP,S	70.00
			TOOLS,CHEMICAL,DISH SOAP,S	6.58
			TOOLS,CHEMICAL,DISH SOAP,S	2.39
		RYAN WALTER DBA	JAN 2024 TREATMENT	30.00
			JAN 2024 TREATMENT	30.00
			JAN 2024 TREATMENT	30.00
		KLEHAMMER, BRENDA JE'NELLE	JAN 2024 CLASS @ \$15.00 (9	135.00
			TOTAL:	4,052.85
STREET & STORMWATER	GENERAL	APPTEGY, INC	THRILLSHARE MEDIA	18.00
			THRILLSHARE MEDIA	360.00
		SNAP-ON CREDIT LLC	JAN 2024 MONTHLY	46.75
		INLAND TRUCK PARTS COMPANY	FUEL/WATER SEPARATOR	197.49
		KANSAS MUNICIPAL UTILITIES,INC	CDL/ELDT CERT CLASS-DILLEY	50.00
		QUALITY AUTOMOTIVE EQUIPMENT AND SERVI	TIRE MACHINE FILTER REGULA	48.25
		RYAN WALTER DBA	JAN 2024 TREATMENT	15.00
		SPRAYER SPECIALTIES, INC.	VAC TRAILER MAINT SPLIT	66.24
			MALE COUPLER A-FPT X SPLIT	8.96
		TRUSTPOINT INSURANCE	ADD 23 FORD EXP. ADD 05 DU	123.00
		WHITAKER AGGREGATES, INC.	CRUSHER 8.54 TON	71.74
			CRUSHER RUN 8.56 TON	71.90
			CURHSER RUN 8.82 TON	74.09
			TOTAL:	1,151.42
LIBRARY	LIBRARY	AMAZON	AMAZON LIBRARY MISC	150.43
			AMAZON LIBRARY MISC	136.62
			AMAZON LIBRARY MISC	236.16
			AMAZON LIBRARY MISC	19.85
		APPTEGY, INC	THRILLSHARE MEDIA	630.00
		NORTHEAST KANSAS LIBRARY SYSTE	COURIER SERVICE 2024/VOLUM	1,000.00
		RYAN WALTER DBA	JAN 2024 TREATMENT	30.00
		ULINE	STORAGE RACK/RUBBER Mallet	841.74
			TOTAL:	3,044.80

DEPARTMENT	FUND	VENDOR NAME	DESCRIPTION	AMOUNT_
FIRE DEPARTMENT	PUBLIC SAFETY	APPTEGY, INC	THRILLSHARE MEDIA	90.00
		CONRAD FIRE EQUIPMENT	TANK LEVEL TRANSDUCER	699.39
		TG TECHNICAL SERVICES, LLC	TG TECHNICAL SERVICE	195.00
		MFA OIL CO - PETRO CARD 24	FUEL CARD SPLIT PD/FIRE	145.04
		RYAN WALTER DBA	JAN 2024 TREATMENT	30.00
			TOTAL:	1,159.43
POLICE DEPARTMENT	PUBLIC SAFETY	ANDERSON CO SHERIFF'S DEPT.	JAN LIVE SCAN	150.00
		APPTEGY, INC	THRILLSHARE MEDIA	720.00
		DIGITAL CONNECTIONS, INC.	POLICE COPIES	10.76
		AD ASTRA RADIO	KXKU-FM	200.00
		MFA OIL CO - PETRO CARD 24	FUEL CARD SPLIT PD/FIRE	1,543.81
		POLICEAPP.COM, INC	(7) APPLICANTS	105.00
		RYAN WALTER DBA	JAN 2024 TREATMENT	15.00
		TRUSTPOINT INSURANCE	ADD 23 FORD EXP. ADD 05 DU	290.00
			TOTAL:	3,034.57
ELECTRIC PRODUCTION	ELECTRIC	APPTEGY, INC	THRILLSHARE MEDIA	180.00
		RYAN WALTER DBA	JAN 2024 TREATMENT	15.00
		TRUSTPOINT INSURANCE	RENEWAL (B&M)	74,902.00
			TOTAL:	75,097.00
ELECTRIC DISTRIBUTION	ELECTRIC	ANIXTER, INC.	SPLICE AUTO (125)	936.25
			DIST SYSTEM PARTS CROSSARM	10,107.00
		APPTEGY, INC	THRILLSHARE MEDIA	360.00
		RYAN WALTER DBA	JAN 2024 TREATMENT	7.50
		SPRAYER SPECIALTIES, INC.	VAC TRAILER MAINT SPLIT	66.24
			MALE COUPLER A-FPT X SPLIT	8.96
			TOTAL:	11,485.95
GAS	GAS	APPTEGY, INC	THRILLSHARE MEDIA	180.00
			THRILLSHARE MEDIA	18.00
		HEARTLAND TRACTOR COMPANY	TUBE HYDRAULIC/FREIGHT	150.00
		KANSAS MUNICIPAL UTILITIES, INC	UTILITY WKSHOP-D REYNOLDS-	125.00
			CDL/ELDT CERT CLASS-DILLEY	50.00
		RYAN WALTER DBA	JAN 2024 TREATMENT	7.50
		ST. LUKES HOSPITAL OF KANSAS CITY	DUSTY REYNOLDS - OUTPAT	32.50
		SPRAYER SPECIALTIES, INC.	VAC TRAILER MAINT SPLIT	66.23
			MALE COUPLER A-FPT X SPLIT	8.96
			TOTAL:	638.19
SANITATION	SANITATION	APPTEGY, INC	THRILLSHARE MEDIA	18.00
			THRILLSHARE MEDIA	360.00
		ARMOR EQUIPMENT	(2) 3 YD DUMPSTER USD 365	2,262.70
		TT&T SALVAGE & TOWING	TRASH TRK 2017 TO OLATHE	689.80
		KANSAS MUNICIPAL UTILITIES, INC	CDL/ELDT HERRERA - MAY	800.00
			CDL/ELDT CERT CLASS-DILLEY	50.00
		RYAN WALTER DBA	JAN 2024 TREATMENT	7.50
			TOTAL:	4,188.00
WASTEWATER	WASTEWATER	APPTEGY, INC	THRILLSHARE MEDIA	18.00
			THRILLSHARE MEDIA	180.00
		MIDWEST ENGINEERING GROUP LLC	SEWER WASTEWTR SYSTEM	5,250.00
		KANSAS MUNICIPAL UTILITIES, INC	CDL/ELDT CERT CLASS-DILLEY	50.00
		SPRAYER SPECIALTIES, INC.	VAC TRAILER MAINT SPLIT	66.23
			MALE COUPLER A-FPT X SPLIT	8.95

DEPARTMENT	FUND	VENDOR NAME	DESCRIPTION	AMOUNT
			TOTAL:	5,573.18
WATER	WATER	APPTGY, INC	THRILLSHARE MEDIA	180.00
			THRILLSHARE MEDIA	18.00
			THRILLSHARE MEDIA	360.00
		GERKEN RENT-ALL, INC	MINI EXCAVATOR RENT WTR LI	269.50
		HAWKINS, INC.	WALCHEM	513.60
			ACTICARB	6,085.15
			SODIUM PERMANGANATE	4,191.24
		HEARTLAND TRACTOR COMPANY	TUBE HYDRAULIC/FREIGHT	150.00
		KANSAS MUNICIPAL UTILITIES, INC	WTR ACADEMY-ARNETT/HARRISO	1,300.00
			UTILITY WKSHOP-D REYNOLDS-	125.00
			CDL/ELDT CERT CLASS-DILLEY	50.00
		MID-AMERICA VALVE & EQUIP. CO.	ACTUATOR 12" PRATT VALVE	350.00
		MICRO-COMM, INC.	EXTENDED SERV WARRANTY PRO	4,050.00
		RYAN WALTER DBA	JAN 2024 TREATMENT	7.50
			JAN 2024 TREATMENT	15.00
		ST. LUKES HOSPITAL OF KANSAS CITY	DUSTY REYNOLDS - OUTPAT	32.50
		SPRAYER SPECIALTIES, INC.	VAC TRAILER MAINT SPLIT	66.23
			MALE COUPLER A-FPT X SPLIT	8.96
		USA BLUEBOOK- HD SUPPLY	PH BUFFER	76.46
			TOTAL:	17,849.14
ECONOMIC DEVELOPMENT	ECONOMIC DEVELOPME	RYAN WALTER DBA	JAN 2024 TREATMENT	1.25
			TOTAL:	1.25
PARKSIDE #1	PARKSIDE #1	ALL-IN-ONE PEST, HOME & LAWN, LLC	GHA PEST CONTROL SPLIT	300.00
		APPTGY, INC	THRILLSHARE MEDIA	120.00
		C.E.S.	GHA BLDG MAINT SPLIT	94.30
		DIGITAL CONNECTIONS, INC.	COPIER SPLIT	43.60
		HD SUPPLY, INC	SWIVEL PIN HAND SHWER (2)	40.45
		CINTAS FIRE PROTECTION	INSPECTION PS1/PS2	558.75
		WOLKEN PLBG. & ELECTRIC, INC.	FURNACE SERVICE CALL	109.00
			TOTAL:	1,266.10
PARKSIDE #2	PARKSIDE #2	ALL-IN-ONE PEST, HOME & LAWN, LLC	GHA PEST CONTROL SPLIT	300.00
		APPTGY, INC	THRILLSHARE MEDIA	120.00
		C.E.S.	GHA BLDG MAINT SPLIT	94.30
		DIGITAL CONNECTIONS, INC.	COPIER SPLIT	43.60
		HD SUPPLY, INC	SWIVEL PIN HAND SHWER (2)	40.45
		CINTAS FIRE PROTECTION	INSPECTION PS1/PS2	558.74
		WOLKEN PLBG. & ELECTRIC, INC.	FURNACE SERVICE CALL	109.00
			TOTAL:	1,266.09
PARK PLAZA NORTH	PARK PLAZA NORTH	ALL-IN-ONE PEST, HOME & LAWN, LLC	GHA PEST CONTROL SPLIT	300.00
		APPTGY, INC	THRILLSHARE MEDIA	120.00
		C.E.S.	GHA BLDG MAINT SPLIT	94.29
		DIGITAL CONNECTIONS, INC.	COPIER SPLIT	43.60
			TOTAL:	557.89
CAPITAL IMPROVEMENTS	CAPITAL IMPROVEMEN	LLOYD HAROLD	SPARE PUMP SOUTH LIFT	11,309.17
			TOTAL:	11,309.17
EQUIPMENT RESERVES	EQUIPMENT RESERVE	INDUSTRIAL SALES COMPANY, INC.	ELEC FUSION MACHINE SPLIT	3,315.30
			ELEC FUSION MACHINE SPLIT	3,315.30
			TOTAL:	6,630.60

DEPARTMENT	FUND	VENDOR NAME	DESCRIPTION	AMOUNT_
===== FUND TOTALS =====				
	101	GENERAL		15,792.91
	104	LIBRARY		3,044.80
	105	PUBLIC SAFETY		4,194.00
	109	ELECTRIC		86,582.95
	110	GAS		638.19
	111	SANITATION		4,188.00
	112	WASTEWATER		5,573.18
	113	WATER		17,849.14
	114	ECONOMIC DEVELOPMENT		1.25
	115	PARKSIDE #1		1,266.10
	116	PARKSIDE #2		1,266.09
	117	PARK PLAZA NORTH		557.89
	118	CAPITAL IMPROVEMENT		11,309.17
	119	EQUIPMENT RESERVE		6,630.60

		GRAND TOTAL:		158,894.27

VENDOR SORT KEY	DESCRIPTION	FUND	DEPARTMENT	AMOUNT_
AD ASTRA RADIO	KXKU-FM	PUBLIC SAFETY	POLICE DEPARTMENT	200.00_
			TOTAL:	200.00
ALL-IN-ONE PEST, HOME & LAWN, LLC	GHA PEST CONTROL SPLIT	PARKSIDE #1	PARKSIDE #1	300.00
	GHA PEST CONTROL SPLIT	PARKSIDE #2	PARKSIDE #2	300.00
	GHA PEST CONTROL SPLIT	PARK PLAZA NORTH	PARK PLAZA NORTH	300.00_
			TOTAL:	900.00
AMAZON	AMAZON LIBRARY MISC	LIBRARY	LIBRARY	150.43
	AMAZON LIBRARY MISC	LIBRARY	LIBRARY	136.62
	AMAZON LIBRARY MISC	LIBRARY	LIBRARY	236.16
	AMAZON LIBRARY MISC	LIBRARY	LIBRARY	19.85_
			TOTAL:	543.06
AMERICAN SOLUTIONS FOR BUSINESS	2023 TAX FORMS	GENERAL	GOVERNMENT ADMINISTRAT	232.99_
			TOTAL:	232.99
ANDERSON CO SHERIFF'S DEPT.	JAN LIVE SCAN	PUBLIC SAFETY	POLICE DEPARTMENT	150.00_
			TOTAL:	150.00
ANIXTER, INC.	SPICE AUTO (125)	ELECTRIC	ELECTRIC DISTRIBUTION	936.25
	DIST SYSTEM PARTS CROSSARM	ELECTRIC	ELECTRIC DISTRIBUTION	10,107.00_
			TOTAL:	11,043.25
APPTGEY, INC	THRILLSHARE MEDIA	GENERAL	GOVERNMENT ADMINISTRAT	3,500.00
	THRILLSHARE MEDIA	GENERAL	GOVERNMENT ADMINISTRAT	720.00
	THRILLSHARE MEDIA	GENERAL	COMMUNITY DEVELOPMENT	270.00
	THRILLSHARE MEDIA	GENERAL	PARKS, RECREATION & CE	450.00
	THRILLSHARE MEDIA	GENERAL	STREET & STORMWATER	18.00
	THRILLSHARE MEDIA	GENERAL	STREET & STORMWATER	360.00
	THRILLSHARE MEDIA	LIBRARY	LIBRARY	630.00
	THRILLSHARE MEDIA	PUBLIC SAFETY	FIRE DEPARTMENT	90.00
	THRILLSHARE MEDIA	PUBLIC SAFETY	POLICE DEPARTMENT	720.00
	THRILLSHARE MEDIA	ELECTRIC	ELECTRIC PRODUCTION	180.00
	THRILLSHARE MEDIA	ELECTRIC	ELECTRIC DISTRIBUTION	360.00
	THRILLSHARE MEDIA	GAS	GAS	180.00
	THRILLSHARE MEDIA	GAS	GAS	18.00
	THRILLSHARE MEDIA	SANITATION	SANITATION	18.00
	THRILLSHARE MEDIA	SANITATION	SANITATION	360.00
	THRILLSHARE MEDIA	WASTEWATER	WASTEWATER	18.00
	THRILLSHARE MEDIA	WASTEWATER	WASTEWATER	180.00
	THRILLSHARE MEDIA	WATER	WATER	180.00
	THRILLSHARE MEDIA	WATER	WATER	18.00
	THRILLSHARE MEDIA	WATER	WATER	360.00
	THRILLSHARE MEDIA	PARKSIDE #1	PARKSIDE #1	120.00
	THRILLSHARE MEDIA	PARKSIDE #2	PARKSIDE #2	120.00
	THRILLSHARE MEDIA	PARK PLAZA NORTH	PARK PLAZA NORTH	120.00_
			TOTAL:	8,990.00
ARMOR EQUIPMENT	(2) 3 YD DUMPSTER USD 365	SANITATION	SANITATION	2,262.70_
			TOTAL:	2,262.70
C.E.S.	GHA BLDG MAINT SPLIT	PARKSIDE #1	PARKSIDE #1	94.30
	GHA BLDG MAINT SPLIT	PARKSIDE #2	PARKSIDE #2	94.30
	GHA BLDG MAINT SPLIT	PARK PLAZA NORTH	PARK PLAZA NORTH	94.29_
			TOTAL:	282.89

VENDOR SORT KEY	DESCRIPTION	FUND	DEPARTMENT	AMOUNT_
CINTAS FIRE PROTECTION	INSPECTION PS1/PS2	PARKSIDE #1	PARKSIDE #1	558.75
	INSPECTION PS1/PS2	PARKSIDE #2	PARKSIDE #2	558.74
			TOTAL:	1,117.49
CONRAD FIRE EQUIPMENT	TANK LEVEL TRANSDUCER	PUBLIC SAFETY	FIRE DEPARTMENT	699.39
			TOTAL:	699.39
CRYSTAL LAKE FISHERIES, INC.	FISH (595) LBS (350)	GENERAL	PARKS, RECREATION & CE	2,187.50
			TOTAL:	2,187.50
DIGITAL CONNECTIONS, INC.	POLICE COPIES	PUBLIC SAFETY	POLICE DEPARTMENT	10.76
	COPIER SPLIT	PARKSIDE #1	PARKSIDE #1	43.60
	COPIER SPLIT	PARKSIDE #2	PARKSIDE #2	43.60
	COPIER SPLIT	PARK PLAZA NORTH	PARK PLAZA NORTH	43.60
			TOTAL:	141.56
GLEASON & DOTY, CHARTERED	COURT HRS 8.25	GENERAL	GOVERNMENT ADMINISTRAT	1,650.00
			TOTAL:	1,650.00
FAMILY CONCEPTS LTD	LITTLE PEOPLES GUIDE-BOOKS	GENERAL	GOVERNMENT ADMINISTRAT	149.93
			TOTAL:	149.93
GERKEN RENT-ALL, INC	CEDAR VALLEY TOILET (6)	GENERAL	PARKS, RECREATION & CE	627.00
	MINI EXCAVATOR RENT WTR LI	WATER	WATER	269.50
			TOTAL:	896.50
HAWKINS, INC.	WALCHEM	WATER	WATER	513.60
	ACTICARB	WATER	WATER	6,085.15
	SODIUM PERMANGANATE	WATER	WATER	4,191.24
			TOTAL:	10,789.99
HHD SUPPLY, INC	SWIVEL PIN HAND SHWER (2)	PARKSIDE #1	PARKSIDE #1	40.45
	SWIVEL PIN HAND SHWER (2)	PARKSIDE #2	PARKSIDE #2	40.45
			TOTAL:	80.90
HEARTLAND TRACTOR COMPANY	TUBE HYDRAULIC/FREIGHT	GAS	GAS	150.00
	TUBE HYDRAULIC/FREIGHT	WATER	WATER	150.00
			TOTAL:	300.00
INDUSTRIAL SALES COMPANY, INC.	ELEC FUSION MACHINE SPLIT	EQUIPMENT RESERVE	EQUIPMENT RESERVES	3,315.30
	ELEC FUSION MACHINE SPLIT	EQUIPMENT RESERVE	EQUIPMENT RESERVES	3,315.30
			TOTAL:	6,630.60
INLAND TRUCK PARTS COMPANY	FUEL/WATER SEPARATOR	GENERAL	STREET & STORMWATER	197.49
			TOTAL:	197.49
KANSAS MUNICIPAL JUDGES ASSOCIATION	JUDGES ASSOC 2024	GENERAL	GOVERNMENT ADMINISTRAT	25.00
			TOTAL:	25.00
KANSAS MUNICIPAL UTILITIES, INC	CDL/ELDT CERT CLASS-DILLEY	GENERAL	STREET & STORMWATER	50.00
	UTILITY WKSHOP-D REYNOLDS-	GAS	GAS	125.00
	CDL/ELDT CERT CLASS-DILLEY	GAS	GAS	50.00
	CDL/ELDT HERRERA - MAY	SANITATION	SANITATION	800.00
	CDL/ELDT CERT CLASS-DILLEY	SANITATION	SANITATION	50.00
	CDL/ELDT CERT CLASS-DILLEY	WASTEWATER	WASTEWATER	50.00
	WTR ACADEMY-ARNETT/HARRISO	WATER	WATER	1,300.00

VENDOR SORT KEY	DESCRIPTION	FUND	DEPARTMENT	AMOUNT_
	UTILITY WKSHOP-D REYNOLDS- WATER		WATER	125.00
	CDL/ELDT CERT CLASS-DILLEY WATER		WATER	50.00
			TOTAL:	2,600.00
KLEHAMMER, BRENDA JE'NELLE	JAN 2024 CLASS @ \$15.00 (9 GENERAL		PARKS, RECREATION & CE	135.00
			TOTAL:	135.00
LANDON, HEATHER R.	JAN/FEB CASES (14)	GENERAL	GOVERNMENT ADMINISTRAT	4,000.00
			TOTAL:	4,000.00
LLOYD HAROLD	SPARE PUMP SOUTH LIFT	CAPITAL IMPROVEMEN	CAPITAL IMPROVEMENTS	11,309.17
			TOTAL:	11,309.17
MMFA OIL CO - PETRO CARD 24	FUEL CARD SPLIT PD/FIRE	PUBLIC SAFETY	FIRE DEPARTMENT	145.04
	FUEL CARD SPLIT PD/FIRE	PUBLIC SAFETY	POLICE DEPARTMENT	1,543.81
			TOTAL:	1,688.85
MICRO-COMM, INC.	EXTENDED SERV WARRANTY PRO WATER		WATER	4,050.00
			TOTAL:	4,050.00
MID-AMERICA VALVE & EQUIP. CO.	ACTUATOR 12" PRATT VALVE	WATER	WATER	350.00
			TOTAL:	350.00
MIDWEST ENGINEERING GROUP LLC	SEWER WASTEWTR SYSTEM	WASTEWATER	WASTEWATER	5,250.00
			TOTAL:	5,250.00
MILLER HARDWARE	TOOLS,CHEMICAL,DISH SOAP,S GENERAL		PARKS, RECREATION & CE	434.85
	TOOLS,CHEMICAL,DISH SOAP,S GENERAL		PARKS, RECREATION & CE	18.97
	TOOLS,CHEMICAL,DISH SOAP,S GENERAL		PARKS, RECREATION & CE	30.56
	TOOLS,CHEMICAL,DISH SOAP,S GENERAL		PARKS, RECREATION & CE	70.00
	TOOLS,CHEMICAL,DISH SOAP,S GENERAL		PARKS, RECREATION & CE	6.58
	TOOLS,CHEMICAL,DISH SOAP,S GENERAL		PARKS, RECREATION & CE	2.39
			TOTAL:	563.35
NORTHEAST KANSAS LIBRARY SYSTE	COURIER SERVICE 2024/VOLUM LIBRARY		LIBRARY	1,000.00
			TOTAL:	1,000.00
POLICEAPP.COM, INC	(7) APPLICANTS	PUBLIC SAFETY	POLICE DEPARTMENT	105.00
			TOTAL:	105.00
PYRAMID FOODS dba COUNTRY MART	WATER	GENERAL	GOVERNMENT ADMINISTRAT	11.97
			TOTAL:	11.97
QUALITY AUTOMOTIVE EQUIPMENT AND SERVI	TIRE MACHINE FILTER REGULA	GENERAL	STREET & STORMWATER	48.25
			TOTAL:	48.25
RYAN WALTER DBA	JAN 2024 TREATMENT	GENERAL	GOVERNMENT ADMINISTRAT	8.75
	JAN 2024 TREATMENT	GENERAL	COMMUNITY DEVELOPMENT	5.00
	JAN 2024 TREATMENT	GENERAL	COMMUNITY DEVELOPMENT	15.00
	JAN 2024 TREATMENT	GENERAL	PARKS, RECREATION & CE	30.00
	JAN 2024 TREATMENT	GENERAL	PARKS, RECREATION & CE	30.00
	JAN 2024 TREATMENT	GENERAL	PARKS, RECREATION & CE	30.00
	JAN 2024 TREATMENT	GENERAL	STREET & STORMWATER	15.00
	JAN 2024 TREATMENT	LIBRARY	LIBRARY	30.00
	JAN 2024 TREATMENT	PUBLIC SAFETY	FIRE DEPARTMENT	30.00
	JAN 2024 TREATMENT	PUBLIC SAFETY	POLICE DEPARTMENT	15.00

VENDOR SORT KEY	DESCRIPTION	FUND	DEPARTMENT	AMOUNT_
	JAN 2024 TREATMENT	ELECTRIC	ELECTRIC PRODUCTION	15.00
	JAN 2024 TREATMENT	ELECTRIC	ELECTRIC DISTRIBUTION	7.50
	JAN 2024 TREATMENT	GAS	GAS	7.50
	JAN 2024 TREATMENT	SANITATION	SANITATION	7.50
	JAN 2024 TREATMENT	WATER	WATER	7.50
	JAN 2024 TREATMENT	WATER	WATER	15.00
	JAN 2024 TREATMENT	ECONOMIC DEVELOPME	ECONOMIC DEVELOPMENT	1.25
			TOTAL:	270.00
SNAP-ON CREDIT LLC	JAN 2024 MONTHLY	GENERAL	STREET & STORMWATER	46.75
			TOTAL:	46.75
SPRAYER SPECIALTIES, INC.	VAC TRAILER MAINT SPLIT	GENERAL	STREET & STORMWATER	66.24
	MALE COUPLER A-FPT X SPLIT	GENERAL	STREET & STORMWATER	8.96
	VAC TRAILER MAINT SPLIT	ELECTRIC	ELECTRIC DISTRIBUTION	66.24
	MALE COUPLER A-FPT X SPLIT	ELECTRIC	ELECTRIC DISTRIBUTION	8.96
	VAC TRAILER MAINT SPLIT	GAS	GAS	66.23
	MALE COUPLER A-FPT X SPLIT	GAS	GAS	8.96
	VAC TRAILER MAINT SPLIT	WASTEWATER	WASTEWATER	66.23
	MALE COUPLER A-FPT X SPLIT	WASTEWATER	WASTEWATER	8.95
	VAC TRAILER MAINT SPLIT	WATER	WATER	66.23
	MALE COUPLER A-FPT X SPLIT	WATER	WATER	8.96
			TOTAL:	375.96
ST. LUKES HOSPITAL OF KANSAS CITY	DUSTY REYNOLDS - OUTPAT	GAS	GAS	32.50
	DUSTY REYNOLDS - OUTPAT	WATER	WATER	32.50
			TOTAL:	65.00
TG TECHNICAL SERVICES, LLC	TG TECHNICAL SERVICE	PUBLIC SAFETY	FIRE DEPARTMENT	195.00
			TOTAL:	195.00
TRUSTPOINT INSURANCE	ADD 23 FORD EXP. ADD 05 DU	GENERAL	STREET & STORMWATER	123.00
	ADD 23 FORD EXP. ADD 05 DU	PUBLIC SAFETY	POLICE DEPARTMENT	290.00
	RENEWAL (B&M)	ELECTRIC	ELECTRIC PRODUCTION	74,902.00
			TOTAL:	75,315.00
TT&T SALVAGE & TOWING	TRASH TRK 2017 TO OLATHE	SANITATION	SANITATION	689.80
			TOTAL:	689.80
ULINE	STORAGE RACK/RUBBER Mallet	LIBRARY	LIBRARY	841.74
			TOTAL:	841.74
USA BLUEBOOK- HD SUPPLY	PH BUFFER	WATER	WATER	76.46
			TOTAL:	76.46
WHITAKER AGGREGATES, INC.	CRUSHER 8.54 TON	GENERAL	STREET & STORMWATER	71.74
	CRUSHER RUN 8.56 TON	GENERAL	STREET & STORMWATER	71.90
	CURHSEER RUN 8.82 TON	GENERAL	STREET & STORMWATER	74.09
			TOTAL:	217.73
WOLKEN PLBG. & ELECTRIC, INC.	FURNACE SERVICE CALL	PARKSIDE #1	PARKSIDE #1	109.00
	FURNACE SERVICE CALL	PARKSIDE #2	PARKSIDE #2	109.00
			TOTAL:	218.00

VENDOR SORT KEY	DESCRIPTION	FUND	DEPARTMENT	AMOUNT_
-----------------	-------------	------	------------	---------

===== FUND TOTALS =====				
101	GENERAL	15,792.91		
104	LIBRARY	3,044.80		
105	PUBLIC SAFETY	4,194.00		
109	ELECTRIC	86,582.95		
110	GAS	638.19		
111	SANITATION	4,188.00		
112	WASTEWATER	5,573.18		
113	WATER	17,849.14		
114	ECONOMIC DEVELOPMENT	1.25		
115	PARKSIDE #1	1,266.10		
116	PARKSIDE #2	1,266.09		
117	PARK PLAZA NORTH	557.89		
118	CAPITAL IMPROVEMENT	11,309.17		
119	EQUIPMENT RESERVE	6,630.60		

	GRAND TOTAL:	158,894.27		

TOTAL PAGES: 5

BILLS:	\$ 8,278.39	(2023)
BILLS:	\$158,894.27	(2024)
PAYROLL:	\$116,964.75	
TOTAL:	\$284,137.41	