

March Art League Trip

Date: Thursday, March 5, 2020

Join members and guests of the Galveston Art League for our first trip to area attractions. We will have a 2-fer excursion to Phoenicia Market and The Menil Collection. Begin the day with a shopping experience to a one-of-a-kind destination for gourmet foods and cooking-related items. Before leaving Phoenicia, we will enjoy lunch from the vast array of food items in the market. Our next stop will be the famous Menil Collection of 17,000 objects of art. We should arrive home about 4 p.m.

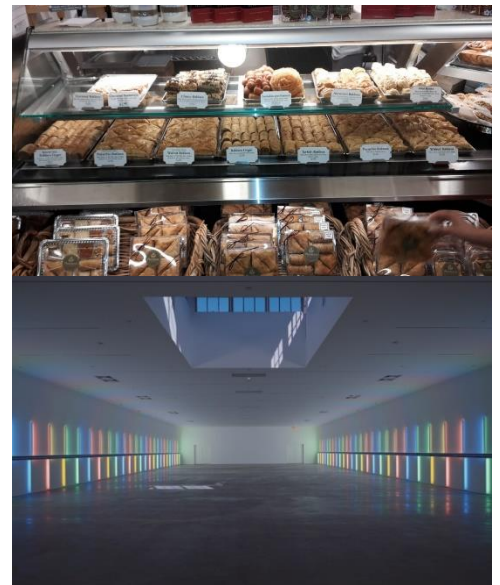
Phoenicia Market

We will begin our day with a stop at Phoenicia Market a one-of-a-kind destination for gourmet foods, produce, fresh seafood, artisan breads and rustic-style pizza, boutique wines and craft beers, premium meats and cheeses, a signature coffee and gelato bar, floral and housewares sections,. After an hour of shopping, we will enjoy lunch from any of the market's delis, cheese cases, displays of baked goods, or from the prepared food areas.

The Menil Collection

Spanning the prehistoric era to the present day, the Menil's collection grew out of personal and intellectual passions rather than encyclopedic ambitions. The heart of the collection is the 10,000 art works and objects gathered by John and Dominique de Menil. The collections have 17,000 works; you can see:

- Arts of Africa
- Arts of the Americas and Pacific Northwest
- Arts of the Ancient World
- Arts of the Pacific Islands
- Drawings Collection
- Medieval and Byzantine Art
- Modern and Contemporary Art
- Surrealism and Witnesses



DAY TRIP TO THE MENIL COLLECTION AND PHOENICIA MARKET

Date: Thursday, March 5, 2020

Time: 9:30 a.m. to 4 p.m.

Cost: \$42

Maximum: 24

To register:

<https://www.galvestonartleague.com/workshops.html>

If you have questions: Nancy House, 281-451-5814

Note: we will meet at **9:15** in the south east corner of the parking lot of the Target store located at 6128 Broadway in Galveston. **Please be on time.** Look for the Galveston Limousine Bus; it will be parked in the south east corner which is behind PetSmart.

