

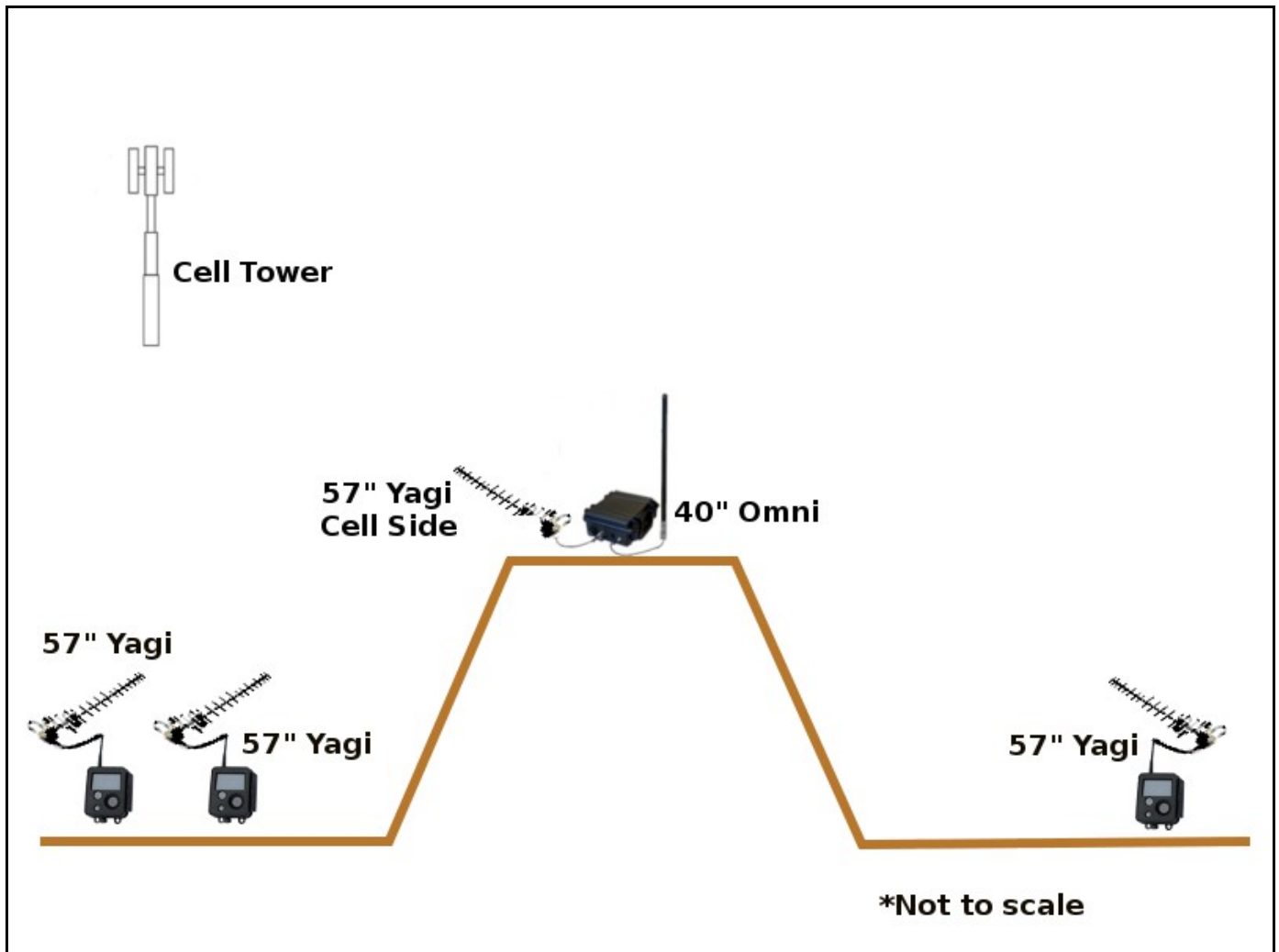
The following diagram shows an example setup that includes a Cell Base on top of a mountain communicating directly with cameras a very long distance away (i.e. greater than 15 miles). An application like this would most likely require 57 inch Yagi antennas at the cameras. The antennas should be at least 30 feet off of the ground and pointed directly at the Cell Base. This will require the use of 400 series cable.

The Cell Base should use a 40 inch omnidirectional antenna for the camera side. It should be mounted as high as possible.

If the cell signal is too weak to get a network connection, the standard cellular omnidirectional antenna may be replaced with a 57 inch Yagi type pointed directly at a cell tower. This may improve the signal enough for the Cell Base to get a network connection. (Note: This will require a custom cable. Contact Buckeye Cam tech support for assistance.)

This type of long distance setup may require some trial and error to find the optimal antenna placement. Buckeye Cam can provide technical support and on-site assistance if necessary.

For more information on antennas and repeater setups, see *Application Note 01: Optional Antenna Setups for all Buckeye Cam Wireless Devices* (www.buckeyecam.com/site/support.html).



For more information visit, www.buckeyecam.com or call toll free at: 866-325-8172