



# THE MODEL T FORD

## ITS REPAIR, SERVICE, & RESTORATION

**DAN TREACE, Technical Editor**

**P.O. Box 76 • Earleton, FL 32631 USA**

**E-mail: tmodelman@comcast.net**

**Phone: (904) 616-4362**

### Repairing Open Car Door Swing

Over time, the doors on Tourings and Runabouts can develop sag, similar to a garden gate, which can cause the doors to stick or be hard to close. Normally the hinges are good and the latch still functions, but the door drags or hits on the lower sill, as shown in the picture below.



One simple cure is to pull the opposite edges of the door back into shape, removing the sag or excess twist from the wood frame of the door. Using wire cable and a turnbuckle is the fix, as the wire pulls the wood frame of the door back into shape.

First, remove the door cardboard panel by carefully using a puller to remove the welting and tacks holding the panel. The panel will be reused, along with the welting and tacks, when replaced on the door.

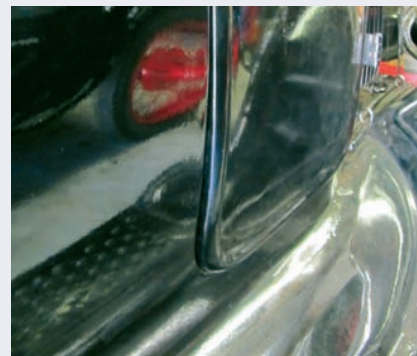


Next, secure a small turnbuckle with cup hook or eye and a length of fine wire cable to the wood frame diagonally, as shown in the next picture. As you turn the buckle, the door frame will pull back into shape. Use nuts on the turnbuckle after tightening the wire to keep the buckle from untwisting.



The door is now back into shape again and the cardboard panel can be replaced.

Note on the lower sill the two areas where paint is missing. This is where the door used to stick. With the re-shape, the door no longer jams up on those spots!



• • • •