

MOHAVE MUSEUM OF HISTORY & ARTS

MOHAVE MEMORIES

SEPTEMBER—OCTOBER 2017

OFFICERS

President
Bill Wales

Vice President
Cathy Ott

Director
Shannon Rossiter

BOARD MEMBERS

Phyllis Eaton (Treasurer)

Sue Snell (Secretary)

Robert Ballard

Erin Cochran

Bill Ekstrom

Marilyn Glancy

Rhonda Hart

Patrick Otto

Bob Moon

Bill Porter

Andy Sansom

Bill Shilling

Kathy Smith

Dorothy Brown (DMCP)

Marcie Craynon (Ex-Officio)

STAFF

Louise Benner

Andrew Campagnuolo

Cathy Kreis

Vicky Markee

Jessie Morrill

T.R. Srigley

Eddie Walls

FROM THE DIRECTOR

The 21st Century ushered in the notion of “Artificial Intelligence,” the theory that machines can do most anything better than man. I’ve always had a problem with any idea or entity that uses *artificial* as a pronoun. Be that as it may, the machine is here to stay, whether in a position of dominance or second fiddle. However, there is one mitigating factor that man or machine will never be able to avoid, and that is communication. Man has dictated the need to connect, either computer to man or man to man and, possibly, electronic devices to their equivalents.



The one thing lacking with “A I” is the ability to comprehend the past and its relevance to the future. The Museum, as keeper of history, has picked up the slack here in Mohave County. It is a gift to be able to make history come alive and that legacy is ever present here. We have partnered with our clever electronic friends and this alliance has helped the Museum prosper. By the time you read this newsletter, our new LED sign will have been installed and will be at work helping promote the Museum, and Kingman. This new advertising marque will communicate to the public what our great community has to offer, so stay tuned and please weigh in on our new venture, whether positive or negative. The Museum relies on its members’ input.

While on the subject of Membership, I would like to answer two of the questions that frequent my desk: (1) Why am I listed as a new member when I have belonged for twenty years? (2) I joined, but why didn’t I see my name in the newsletter? The answer to both questions lies in the software program we use and the way it works (we seem to be at the mercy of our electronic friends). There is a small window of time to receive your renewal; although you may have been a member since the beginning of time, our computer software says you are new. Simply put, it’s timing, and programming. We are continually updating our systems and one day we’ll have a flow that will please everyone. In the meantime, please accept our apologies for any inconvenience you have experienced. Remember this: Museum members are the backbone of this institution, and I thank you for your loyalty.

#####

AN AUSPICIOUS OCCASION!

SCOTT DUNTON PRESENTS
A PLAQUE TO BOARD
PRESIDENT,
BILL WALES,
MARKING THE DUNTON
FAMILY DONATION OF
THE LATEST
PRESIDENTIAL PORTRAITS.

ARTIST, VICTORIA LYNN
BROWN, AND MEMBERS OF
THE MOHAVE MUSEUM
BOARD OF TRUSTEES JOIN
IN THE SPECIAL OCCASION.



EDITOR'S NOTE

WE ESPECIALLY RECOGNIZE BOARD MEMBER, **KATHY SMITH**, AND EX-OFFICIO MEMBER, **MARCIE CRAYNON**, WHOSE NAMES HAVE BEEN MISSING FROM THE NEWSLETTER LIST ON THE FRONT PAGE FOR FOUR ISSUES! OUR SINCERE APOLOGIZES FOR THE OMISSIONS.

Mohave Memories On The Internet
www.mohavemuseum.org

Mohave Museum of History & Arts

The Mohave Museum of History & Arts invites you to participate in preserving our past and building for the future.

Applications available online
Or call 928-753-3195

General Member \$30.00
Includes member and immediate family free admission to Mohave Museum, Historic Route 66 Museum, and the Bonelli House.

Supporting Member \$100.00
Includes all General member benefits: plus no-charge research assistance from Museum staff.

Business Member \$200.00

Director's Circle \$500.00

Invite a friend or neighbor!

**!! NEWS — NEWS —
NEWS !!**

*Racing headlong into the 21st
Century...*

*www.mohavemuseum.org
presents its fresh new face to
the world!*

(See Pg. 9 for details!)



OUR VOLUNTEERS

ARE THE BACKBONE OF OUR MUSEUM.
WE APPRECIATE AND NEED EACH ONE!

IF YOU CAN GIVE US FOUR HOURS ON ANY DAY
(OR DAYS) OF THE WEEK, CALL.....
928. 753. 3195

WE WELCOME BOTH NEWCOMERS AND OLD-
TIMERS.

FUN, INTERESTING, EDUCATIONAL... MEET
GREAT PEOPLE FROM AROUND THE WORLD...
AND THAT'S JUST ONE OF THE
BENEFITS OF JOINING
OUR HAPPY CREW.



VOLUNTEER LUCI PEWSEY WORKS IN THE RESEARCH FACILITY HELPING WITH DATA ENTRY, DOCUMENT STORAGE... AND WHATEVER ELSE NEEDS TO BE DONE!



VOLUNTEER ANDY SANSOM (ON RIGHT) HELPS IN THE RESEARCH FACILITY WITH OUR PHOTO COLLECTION AND NEWSPAPER PROJECT; AMONG OTHER THINGS. HERE HE IS HELPING ONE OF OUR MANY VISITORS.

50 YEARS AGO FROM THE MOHAVE COUNTY MINER

SEPT.-OCT. 1967

Chloride had its third hailstorm in two weeks on August 30. It hailed so hard one couldn't even see the big C on the mountain above Chloride. The rain blew in sheets with high winds and hail. It flooded many houses in town.

The Mountain Shadows Hitching Post Café held its opening dinner August 26. Dave and Hilda West are the new owners.

The famed De Wayne Brothers Circus, billed as an old-fashioned circus, will present a star-studded program in two events here Sunday at the fairgrounds under the sponsorship of the Mohave Lions Club.

The Mohave County Cycle Club presented a Desert Scramble September 10th in Kingman. Several local riders placed and Tom Webster took first place in the 200cc class.

Kingman officers apprehended an AWOL army man from Ft. Gordon, Georgia, driving a car which was not registered in his name. He was placed in the custody of the military police from Nellis Air Force Base.

Awarded the Purple Heart for wounds sustained in action on July 11 is PFC Raymond Bonham, son of Mr. and Mrs. Frank Bonham of Clacks Canyon. Ray is a 1966 graduate of Mohave County Union High School. He is stationed on the U.S.S. Colleton in the Mekong Delta.



CREDIT: IVAN M. HENRY, WWW.THECIRCUSBLOG.COM



GEORGE HAMILTON'S 1938 ROLLS ROYCE

Kingman finally made world newspapers, radio and television coverage, and it was a Rolls Royce limousine rolling in on US Highway 66 that caused all the commotion. It was one leased by actor George Hamilton and driven by his male secretary from the Hollywood area to Washington, D.C. The Rolls was found by a Kingman policeman when it was left parked behind Denny's Restaurant, an all-night café. The leasing company sent a professional driver Tuesday to pick up the car, a gold one valued at about \$27,500.

Mrs. Rose Mofford, Assistant Secretary of State in the office of Wes Bolin, spoke at Democratic Women's luncheon held Monday at Christie's Restaurant.

Mrs. Nannie Nish of Kingman received word via telegram from the US Marine Corps that her son Richard has been injured in Viet Nam. The 1966 graduate from Mohave County Union High School was active in high school sports here.



MRS. NANNIE NISH
WITH GOVERNOR JACK WILLIAMS

80 YEARS AGO FROM THE MOHAVE COUNTY MINER

SEPT—OCT. 1937

Walter R. Bimson, president of Valley National Bank, commenting on the new location of the local office in the Power Building, corner of Fourth and Beale said, "We have been very gratified with the fine progress made by the Valley National Bank in Kingman. Much of this progress is attributable to the cooperation of Kingman's business men and women."



Preparations are being made by the American Legion to stage the first chess tournament ever to be held in Kingman with the final game to be played on a large chess board painted on the street next Armistice Day (PHOTO BORROWED FROM WWW.FLICKR.COM).

The bartenders at the Beale Cocktail Lounge have supplied themselves with bright, colorful shirts which they will don during the rodeo

William Lawe, chairman of the Board of Supervisors was displaying some beautifully large and lush New York Twig apples from his Hualapai Mountain ranch this week. Although the moun-

tain orchard contains only about two acres, the crop consistently runs over a thousand boxes. [NOTE: NEW YORK "BLACK TWIG" APPLES ARE CONSIDERED A HIGHLY PRIZED HEIR-LOOM OR HERITAGE VARIETY.]



An extensive remodeling program at the City Drug Company is being completed this weekend. The fountain is being lengthened and four new stools and another booth are being added. A new wall case and display counter will complete the improvement.

Approximately 625 students enrolled in the Kingman schools which opened on Tuesday, September 7. Of these 214 were high school enrollees. The grammar school roster shows at present 398 students.

100 YEARS AGO FROM THE MOHAVE COUNTY MINER

SEPT-OCT. 1917



1910 AUSTRO-DAIMLER
"PRINCE HENRY"

(SOURCE: WWW.WIKIPEDIA.COM)

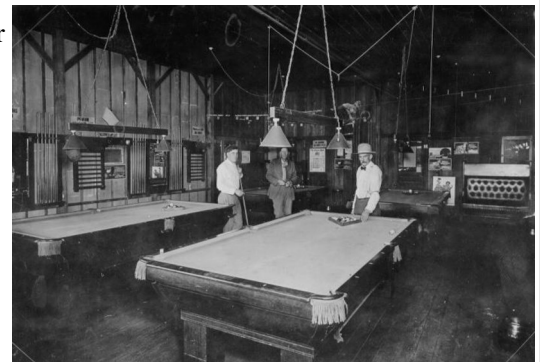
Speed cars representing a total value of \$200,000 will contest in the professional automobile races which will be held at the State Fair in November. From the list of cars and drivers already entered in the races, which will be held under the sanction of the International Motor Contests Association, there is every reason to believe that some of the dirt track records will receive a severe jolt.

To the people of Arizona: The coming seven-day period is Food Pledge Card week, so designated by National Food Administrator Hoover. It begins October 28th and ends November 4th. In every community of Arizona, patriotic workers will visit every house seeking to enlist the support of every home in the nation-wide movement to save food and stop waste, all to the end that more food may be sent to the nations' soldiers abroad and to the millions of people in the allied European countries where famine is very present or near.

Fifteen thousand nurses have already been enrolled by the American Red Cross, many of whom have volunteered for war service, according to a statement made public at Red Cross Headquarters in Washington DC. About two thousand have already been sent to Europe.

That business conditions in Mohave County are good is attested to by a statement made this morning by G. R. Franklin of the Arizona Engineering Company. Since the first of September, Mr. Franklin reports that he has sold eighteen automobiles and four mining outfits. He recommends that business men take a more optimistic view of things and not allow their livers to get out of order.

Running 150 without a miss, "Fatty" Holt of Los Angeles put up a splendid exhibition of pool at the Brunswick Billiard Parlors Thursday night. He cleaned the tables ten times without missing a shot. Joseph F. Knoff of Chlo-ride played with him in an exhibition contest. He played a good game, out-classing the average player.



LOCAL POOL HALL IN KINGMAN, CIRCA 1910
MMHS PHOTO #2597

THE MUSEUM OF HISTORY AND ARTS HOSTS...

JIM HINCKLEY, AUTHOR & HISTORIAN

COME, JOIN US AT THE MOHAVE MUSEUM FOR A PROGRAM MANY OF YOU HAVE SPECIFICALLY REQUESTED. On Saturday, September 23rd, the Museum is hosting a presentation and book signing, by local author and historian, **Jim Hinckley**. His newest book, perhaps the ultimate bucket list for travelers, is entitled *100 Things To Do On Route 66*. Its recent release has led to an array of requests for presentations throughout the United States and in Europe. We have reserved our date in Kingman—you won't want to miss it. Copies of his book will be available in the Gift Shop.

Hinckley's presentation will provide us with entertaining stories from another of his books, *120 Years of Tourism in Kingman, Arizona*. Utilizing historic images, personal experiences, and journal entries from travelers such as Edsel Ford who stopped in Kingman during the summer of 1915, he will illustrate the evolution of a town that slowly progressed from just a stop on the way to somewhere else into an internationally recognized destination on Route 66.

A North Carolina native, Hinckley jokingly quips that since 1959 most every milestone in his life is associated with Route 66. His family made the first trip west that year, much of it on Route 66, and in 1966 they followed that highway to their new home near Kingman. In the shadow of the Black Mountains Jim learned to ride a bicycle and to drive a truck. His first gainful employment was at Ed's Camp, and the first ranches where he worked as an itinerant cow hand were accessed from Route 66. Some of his other books about Route 66 include: *The Route 66 Encyclopedia*; *The Route 66 Illustrated Historical Atlas*; *Ghost Towns of Route 66*; *Route 66: America's Longest Small Town*; and *Travel Route 66*.

YOU WON'T WANT TO MISS IT!

SATURDAY, SEPTEMBER 23, AT 2:00 P. M.



EDITOR'S NOTE

IN THE MAY-JUNE ISSUE OF MOHAVE MEMORIES, THE PHOTO BELOW WAS TO BE INCLUDED IN THE ARTICLE, "A MAN CALLED MATT." OUR APOLOGIES TO YOU AND THE CONTRIBUTOR, CHUCK SMITH, FOR ITS INADVERTENT OMISSION. PLEASE NOTE ALSO: WE CAN IDENTIFY ONLY THREE PEOPLE IN THE PHOTO; IF YOU CAN POSITIVELY IDENTIFY ANY OF THE OTHERS, IT WOULD BE A GREAT CONTRIBUTION TO HISTORIC PRESERVATION WHEN YOU PROVIDE US WITH THEIR NAMES. THOSE POSITIVELY ID'D ARE IN THE SECOND ROW, L TO R: #2-JOE MILLER, AND #5-MATT HANHILA; AND MATT'S SON "MO" (MATT HANHILA, JR.) SITTING BEHIND HIM ON THE TRUCK. (MMHS, PHOTO #13741)



A NOTE FROM THE LIBRARY: HISTORIC PRESERVATION—A REALITY IN KINGMAN

Kingman is a community that personifies “history”—Downtown speaks from the past in many ways, and wise people over the years have listened. Take the Powerhouse, for example. Today it is a thriving and action-filled site where thousands of people from all over the world walk in to look for information about the area, particularly Historic Route 66. How did that happen?

It was the vision of local people who got together and with lots of help made that dream come true. Kingman sits at the “heart” of the longest remaining stretch of U.S. Highway 66. Townspeople could have been satisfied to sit back and fade into history, block off their little spot from the rest of the world; instead, far-sighted people wanted the town to experience healthy growth—a future they could be proud to pass along to their families.

At the Powerhouse, visitors are directed to our three Museums, as well as to other places of interest including the Beale Street shopping experience, the Railroad Museum at the Santa Fe Depot, and even the ancient Mesquite tree that stands as silent witness to generations of activity on 5th Street. Whether you are a local resident and have lived in town for generations, or a “newbie” like me (2005), you are missing out if you aren’t keeping in touch with the heartbeat of “Olde Towne.” How do you do that? You bring your little-self down to the Visitor’s Center, or to the Mohave Museum...and ask questions.

Another Roadside Attraction



Miner File Photo

The Route 66 Museum inside the Powerhouse Visitor Center in downtown Kingman has been designated a roadside attraction by Hampton Inns.

(Photo on Right)...

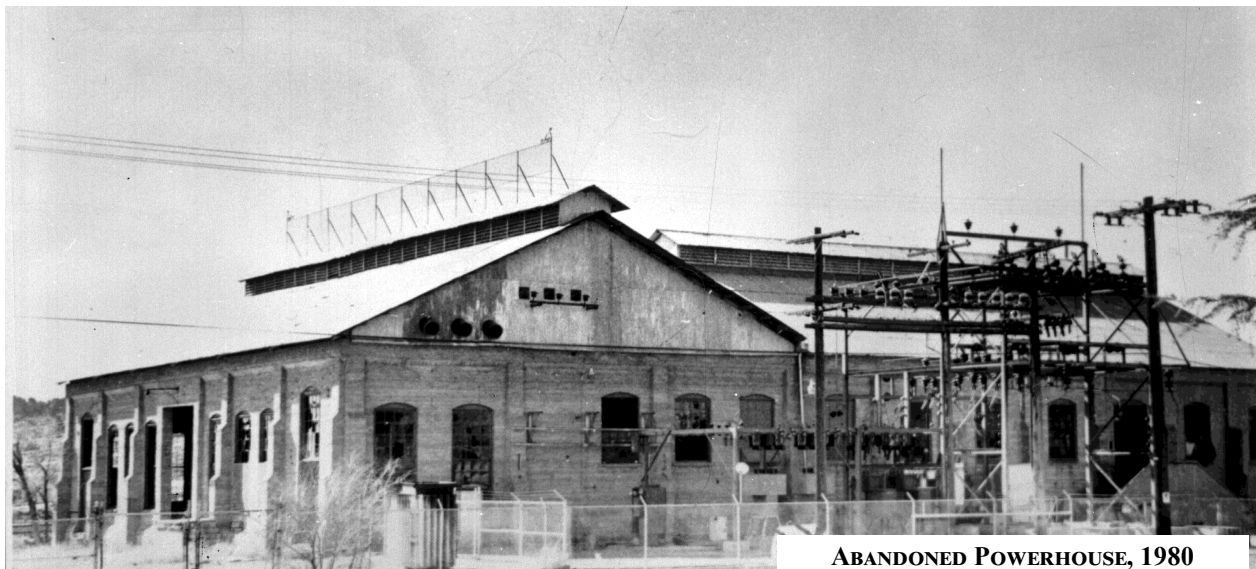
clipped from the Kingman Daily Miner issue of April 3, 2003, where accolades from the Hampton Inns of America were given to the Historic Route 66 Museum.

Today the museum, managed by Louise Benner who also serves as our Volunteer Staff Coordinator, more than fulfills the dream that drove the restoration of the once abandoned power house. 2017 interior improvements are scheduled for completion in September.

First floor: Visitors’ Center offers access to information; two gift shops are on the first floor as well.

Second floor: Entrance to Historic Route 66 Museum, and the Hualapai Native American Gift Shop. Access to the Electric Car Display and an educational video about historic Route 66 are accessed through Museum.

(Photo below) From Research Library photo archives we can provide a “before” photo of the abandoned Powerhouse, now an effective representative to those who are on the road from around the world. (MMHS #10245)



ABANDONED POWERHOUSE, 1980

Membership Renewal

S. J. "Sonny" Alvarado, Scottsdale, AZ
Larry and Sue Wilkin
Ms. Joan McCall
Mr. & Mrs. William Ekstrom, Jr.
Michael J. and Kari Jo Hill
Mr. John R. Byrum, Pasadena, CA
Mark and Rita Wilhelmi, Stanley, ND
Mr. and Mrs. Gene Wolff
Eric and Sharon Bond, Twentynine Palms, CA
Richard C. & Beatrice K. Bennett
Horned Lizard Ranch, Wikieup, AZ
Harry and Elizabeth Drew, Golden Valley, AZ
Ms. Kristine Allaman
Pete and Molly Meyer
Sheldon and Dawn Weisberg, Hackberry, AZ
Mr. Denny Shaeffer
Mr. Norman W. Horn
Judith Padilla
Jim and Donna Pederson
Kate Enfield, Sun City, CA
Doris Lightwine
Ms. Billie Jean Griffith
Mr. Jack M. Kesler
Dr. Paul & Sujatha Kalanithi
Marjorie Huber
Ms. Shirley M. Ryan
Mr. & Mrs. Raymond Evans, Yuma, AZ
Paul and Tannis Soto, Anaheim, CA
Frank and Sharon Popp, Golden Valley, AZ
Al and Elise Otero, Apache Junction, AZ
Theresa A. Langdon, Portland, OR

Carlos W. Noli, Phoenix, AZ
Ms. Shirley Urban
Dianne and Bill Riehle
Jay & Debbie Burnham-Kidwell, Golden Valley, AZ
Carolyn H. Johnson
Mr. Lee M. Novak
Butch and Dianne Roberts
Ms. Sue Baughman, Dolan Springs, AZ
Ms. Penny L. White
Mr. & Mrs. Robert W. Budd
V. R. Campbell or Alda R. Campbell
Doug and Patty Bradley
Kathy Younghusband
Mrs. Archie Kinsel, Dewey, AZ
David C. and Lynda M. French
Bob and Louise Dinneweth
Mr. & Mrs. George Arnold
Ms. Beverly Potter
Mr. Dan Brownell
Laura K. Patriquin
Pat Russell
Mr. & Mrs. Fud Freiday
Gene and Marlene Tidwell
Mr. & Mrs. Patrick Otto
Mrs. Fern Campbell
Brett Inman, Tucson, AZ
Ms. Carmen P. Waetje, Phoenix, AZ
Ms. Miriam Hoover, Phoenix, AZ
Mr. & Mrs. Daniel D. Gaddis, II, Gilbert, AZ
John and Ellyn Artz



Memorials

If a Memorial donation is not designated for a specific purpose, it will be used at the Museum's discretion

In Memory Of

Rose Marie Rosencrans
Pat Koger
Ronald Bradley Weaver
Gloria Baskerville Chase Dukeshire
Larry Lee Cobb, Sr.
Richard L. and Sara P. Liebold

Donor

Clairann P. Cave
Clairann P. Cave
David and Janis Cunningham
James and Candace Rhone
Robert "Bob" Aune
Liebold Estate and Family Trust

New Memberships

Retro Plumbing, Inc.
Jim and Anne Dorre
Charles "Chuck" E. Black
K. C. and Kathy DenDooven, Wickenburg, AZ
Don T. Curry
Katie and Keith Kintner
Harold and Cheryl Jones
Richard Porch
Brent and Jaycee Bridges, Bend OR
Tom Spear
Sandi Fellows
Mr. Robert Walton
Diana Rabai



A PAGE OF NEW!

ABOVE, WE WELCOME OUR NEWEST MEMBERS AND RETURNING MEMBERS
(NOTE DIRECTORS' LETTER ON PAGE ONE).

HERE, SMACK IN THE MIDDLE OF THE PAGE, WE ARE PLEASED TO ANNOUNCE THAT OUR NEWLY DESIGNED WEBSITE IS UP AND RUNNING. HAD TO DO A FAST-STEP IN JULY WHEN WE LEARNED OUR SITE SECURITY WAS IN JEOPARDY, OUR OLD CONTRACT EXPIRING, AND OUR "ANCIENT" SOFTWARE BECOMING OBSOLETE. THE OUTCOME? A LONG-AWAITED FRESH START, WITH THE HELP OF OUR WEB HOSTING COMPANY.

WE TRUST THAT WE'RE "DOIN' YOU PROUD" (OUR MEMBERS, VOLUNTEERS, AND BOARD) WITH THIS COLLABORATIVE EFFORT. LET US KNOW! WE WELCOME YOUR FEEDBACK—AND REMEMBER, IT'LL BE A WORK IN PROGRESS FOR A WHILE. CONTACT CATHY KREIS AT THE RESEARCH FACILITY (X 103).

MEANWHILE, TAKE TIME TO WANDER THROUGH THE SITE AND ENJOY.... WWW.MOHAVEMUSEUM.ORG
AND FINALLY, **BELOW** (AND FROM THE ROAD)...YOU SEE OUR BRAND-NEW LED SIGN!



← THEN...

Metal sign required a ladder to hand-set letters. Marquee that has served the Museum and community; installed 2002...

...NOW →

LED informational sign in place for visitors to Kingman, installed August 8, 2017. Computer and keyboard are ready to roll...



GO TO SIGNAL, THEN PROCEED TO TOMBSTONE

Contributed by Chuck Cook

I've traveled from Kingman to Phoenix on Highway 93 scores of times. After I've passed the beautiful, fertile, green valley at Wikieup I usually zone out from about the Big Sandy Bridge crossing to Phoenix because of the large expanses of uninhabited desert.

However, about ten miles south of the bridge, before you make the Santa Maria descent, I have noticed a road sign that marks the turnoff to the town of Signal and the McCracken Mine. I've not been there because I'm not sure about the accessibility of the roads or whose property I'd be trespassing on.



**GABE LEVY'S STORE AT SIGNAL,
AZ TERRITORY (GABE 4TH FROM RT.)**
MMHA #8753

Little did I know, all this time, that without the town of Signal or the McCracken Mine, the famous town of Tombstone, the "town too tough to die," might never have been on the map. The gunfight at the OK Corral might never have taken place!

Let's look at some history: In 1873, the Peabody Mine was discovered at the site of what was to become the town of Signal. Miners flocked to the area. The following year the McCracken property was discovered, somewhat west of the Peabody, and that mine immediately started a boom in the area. The towns of Signal, Greenwood, and New Virginia were established to house and serve the 2,000 or so miners who came to seek their fortunes.

All supplies, mining equipment, and staple goods had to be shipped from California, up the Lower Colorado River to Aubrey Landing, or farther up-river to

Liverpool Landing, near what is now Lake Havasu City. Then those supplies were transported to the Signal area by wagon or mule train. It was no easy task.

The Mohave County seat was then at Mineral Park near Chloride City, at the time around eighty miles from the Signal/McCracken area. Anyone knows when you get 2,000 hard-rock miners in a remote area a lawless attitude prevails and problems arise. That was the atmosphere at Signal in the 1870's and there is record of at least one altercation involving guns between a saloon keeper and one of the miners who had spent his paycheck on liquor. What surprises me most is the number of people who settled in the Signal area then eventually moved on to Tombstone when the mining boom hit there.

The founder of the town of Tombstone, Ed Schieffelin, came to the McCracken Mine in 1878 looking for his brother Al, who was an employee. Ed had some ore samples from southeastern Arizona that he wanted to show his brother. They took the samples to Richard Gird, a mineral assay specialist who informed the brothers that Ed's ore showed considerable silver content.

Charles Mullen, a prominent Yavapai County resident, tells us that he met Wyatt and Morgan Earp in Signal in 1878. They had just come from Wyoming and were on their way to Cochise County, Arizona Territory.

Enter one John H. Behan who, while at Signal running the Virginia Hotel and one of the thirteen saloons in the area, decided to run for sheriff of Mohave County. He was unsuccessful in his bid for sheriff but did land the job as Mohave County's representative to the 10th Arizona Territorial Legislature.

All these historic figures stayed awhile in the Signal area then moved on down to Tombstone. By 1879 the Schieffelins, the Earps, and John Behan had departed Signal to their fates in Tombstone. The Shieffelins for temporary wealth from the mine Ed discovered, and the Earps and Behan to their deaths over politics, with the gunfight at the OK Corral.

Had the silver content of the mines around Signal not played out there is a possibility that this area of Mohave County would have been known as "the town too tough to die" instead of that little town in Cochise County known as Tombstone.



22 MULE TEAM HAULING SUPPLIES TO MINES
(PHOTO: EXAMPLE ONLY; NOT IN SIGNAL)
MMHS #5279

#####

[Disclaimer: Correction welcome if facts presented in this article are erroneous. CC]

MARK YOUR CALENDAR

SEPTEMBER 2017

- ⇒ Sun., Sept. 10: KINGMAN SOUNDS OF MUSIC PRESENTS
CONCERT IN THE PARK: **Monkey Biz'nezz**
5:00P. M.—Metcalf Park
- ⇒ Sat., Sept. 23: MOHAVE MUSEUM OF HISTORY AND ARTS HOSTS
Jim Hinckley Presentation & Book Signing
2:00 P.M.

OCTOBER 2017

- ⇒ Sat., Oct. 7: Morton Appraisal LLC
KINGMAN ANTIQUES APPRAISAL FAIR @ Mohave Museum of History and Arts
ONLY 50 TICKETS TO BE SOLD; TWO ITEMS FOR \$25
9:00A to 4:00P
- ⇒ Sat., Oct. 14: MOHAVE MUSEUM OF HISTORY AND ARTS HOSTS
"Women of Route 66" — Presenter: Katrina Parks
1:00 P.M.
- ⇒ Sat., Oct. 21: MOHAVE MUSEUM OF HISTORY AND ARTS HOSTS
A Kingman **Sounds of Music Presentation: Our Time, Our History**
Jody Drake: On the AZ Frontier: Ranch Medicine
2:00 P.M.

NOVEMBER 2017

- ⇒ Sat., Nov. 4: **WINE, FOOD, AND SPIRITS**
Mohave Museum History and Arts' Annual Fund Raiser
6:00 P.M.
- ⇒ Sat., Nov. 18: MOHAVE MUSEUM OF HISTORY AND ARTS HOSTS
KINGMAN QUILTERS' GUILD
"Quilts of Valor"
Presentation honoring Viet Nam War Veterans
2:00 P.M.

2018

Future TRAVEL opportunities for
members and friends...

CRUISE ON THE ISLAND PRINCESS
March 25—April 9
Ft. Lauderdale to Los Angeles via Panama Canal

And/Or...

SCOTTISH HIGHLANDS AND ISLANDS
May 4—May 18
14-Day Escorted Tour

NOTE: Important to reserve soon for best prices—these tours have deadlines and fill quickly

CONTACT: DONNA TOUCHETTE
928-757-3368/897-8592
groupspecialist@hotmail.com

Mohave Pioneers
Historical Society, inc.

400 West Beale Street
Kingman, AZ 86401-5708
928-753-3195

museum@mohavemuseum.org
www.mohavemuseum.org

Published monthly by...
Mohave Pioneers
Historical Society, inc.

President.....**Bill Wales**
Director.....**Shannon Rossiter**
Printer.....**H&H Printers, Inc.**

Non-Profit Org.
U.S. Postage
PAID
Kingman, AZ
Permit 41

RETURN SERVICE REQUESTED

SEPTEMBER—OCTOBER 2017

