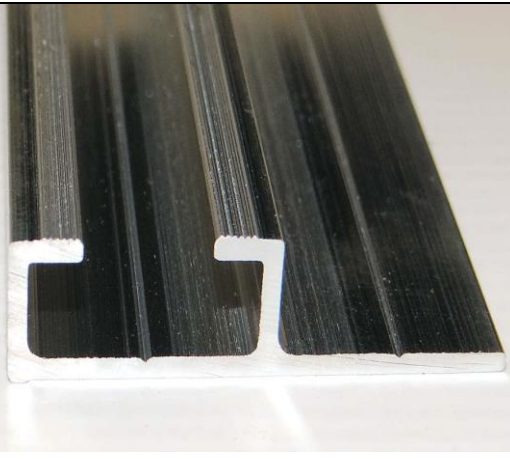
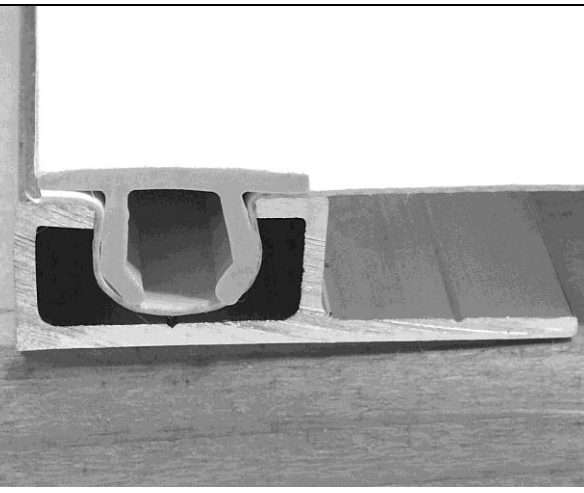
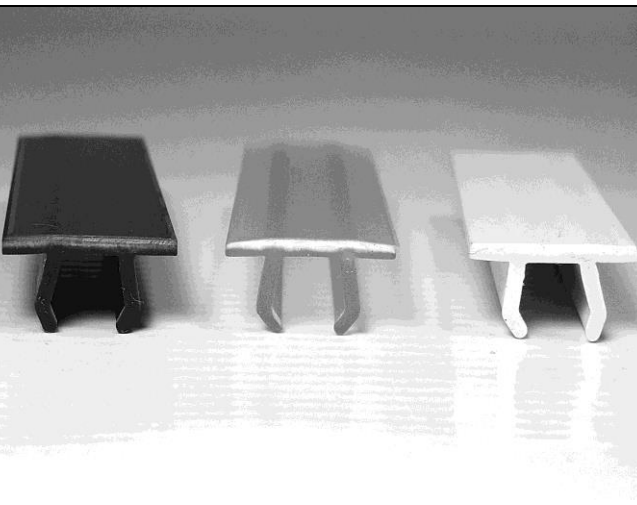


## TS23 - Product Data Sheet

	<p><b>Extrusion Characteristics</b></p> <p>Length: 11' 5" or 348 cm          Width: 1.55" or 3.92 cm          Height: 0.40" or 1.00 cm          Weight: 0.193 lbs. / foot or 0.287 Kg / m          Bar Weight: 2.20 lbs. or 1.00 Kg</p>
	<p><b>Main applications</b></p> <p>Small and Medium size framed banners and signs for:</p> <ul style="list-style-type: none"> <li>• Corporate Entrances</li> <li>• Hallways</li> <li>• Board Rooms</li> <li>• Box Trucks and Trailers</li> <li>• Retail Decoration</li> <li>• Light boxes Flex Faces</li> <li>• Billboards...</li> </ul>
	<p><b>Inserts available with the TS23</b></p> <p>The anti-UV PVC inserts (TS79B / TS79C / TS79W) are used to fix and stretch the graphic when inserting them in the aluminum extrusion.</p>



**Graphic media**

Graphic Media Range from Vinyl, Mesh Vinyl, Canvas, Fabric, Polyester, and Poplin.

In fact, any material that will be supple enough to be inserted in the aluminum channels of our extrusion product line.

**Examples of what can be realized with the TS23**



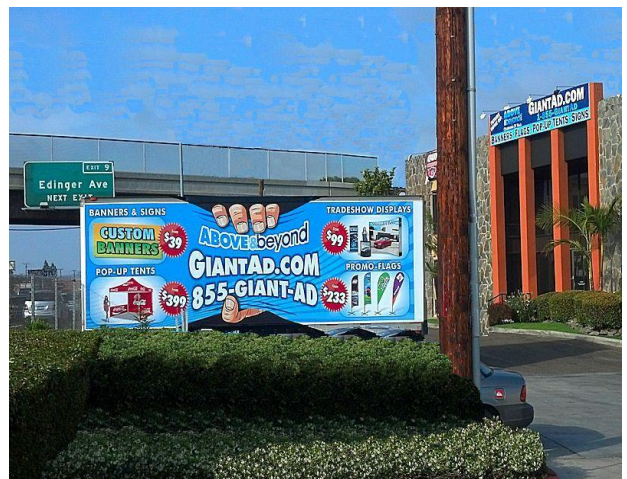
17'H x 40'W Billboard



67ft X 16ft Dinosaurs Exhibit- Cincinnati Museum



15ft X 30ft - Building Wall - LasVegas



Box Trailers

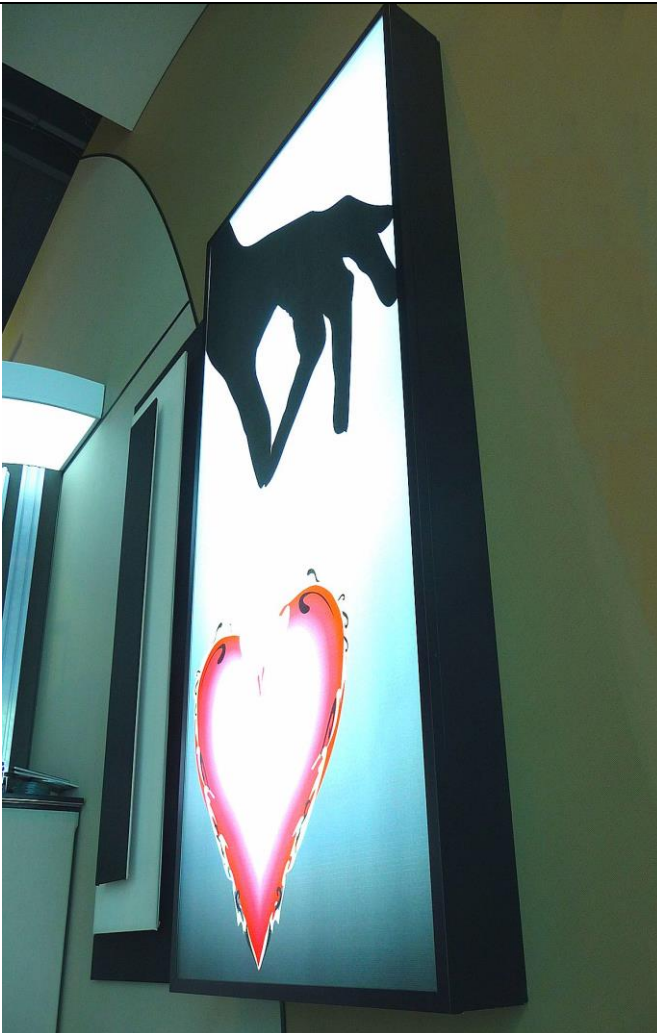




Box Trucks



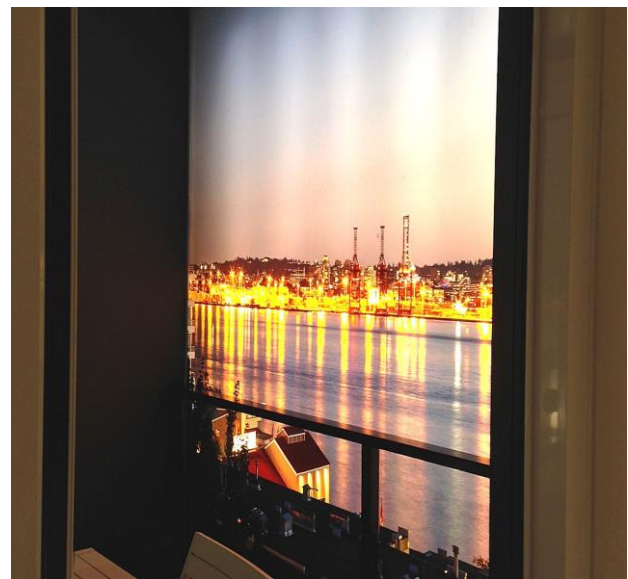
6' by 60' Wall Frame - Houston, TX



Light Box - Flexface with TS79B PVC insert



Mobile Billboard, NY



Flex face on Light Box





TS23-17'h x 40'w - Billboard



TS23- Curved 124' x 10' Stadium Entrance



TS23- Hockey rink entrance- 68' x 44'



TS23- Printed vinyl stretched on the curved frame



TS23-Central Scoreboard



TS23- Orlando Airport, FL - Construction wall