

SECTION 00 91 13

ADDENDUM NUMBER 4

PARTICULARS

- 1.01 DATE: MAY 25, 2018**
- 1.02 PROJECT: AUSTIN HIGH SCHOOL CAREER TECH CENTER**
- 1.03 PROJECT NUMBER: B. C. NO. 2018112**
- 1.04 OWNER: DECATUR CITY SCHOOLS**
- 1.05 ARCHITECT: NOLA | VAN PEURSEM ARCHITECTS, PC**

TO PROSPECTIVE BIDDERS

- 2.01 THIS ADDENDUM FORMS A PART OF THE CONTRACT DOCUMENTS AND MODIFIES THE BIDDING DOCUMENTS DATED APRIL 25, 2018, WITH AMENDMENTS AND ADDITIONS NOTED BELOW.**
- 2.02 ACKNOWLEDGE RECEIPT OF THIS ADDENDUM IN THE SPACE PROVIDED IN THE PROPOSAL FORM. FAILURE TO DO SO MAY DISQUALIFY THE BIDDER.**
- 2.03 THIS ADDENDUM CONSISTS OF 3 PAGES.**

CHANGES TO THE PROJECT MANUAL

3.01 SECTION 00 22 00-OWNER'S SUPPLEMENTARY INSTRUCTIONS TO BIDDERS:

- A. Paragraph 1.03.A – Change paragraph to read as follows, “All sealed bids containing two copies of the Proposal Form, two copies of the Bid Bond, and one copy of Supplement C - List of Alternates (Section 00 43 23) will be received by 2:00 p.m. CDT on **May 31, 2018**. Upon receipt of these documents the bids will be publicly opened and read aloud. Supplement A – List of Subcontractors (section 00 43 21) is to be hand delivered or emailed to the Architect within 24 hours after receipt of bids. No changes to the base bid will be allowed after 2:00 p.m.

CHANGES TO THE DRAWINGS

4.01 SHEET M-2.1 – MECHANICAL ROOF PLAN:

- A. Replace this sheet in its entirety, the list of changes are as follows:
 - 1. Gas piping sizes have been increased to accommodate a valve and cap for future on the roof above the Culinary area.
 - 2. Gas Pressure Regulator has been moved from the schedules sheet to this sheet to show all gas pipe and regulator requirements.
 - 3. Gas Regulator schedule has been revised.

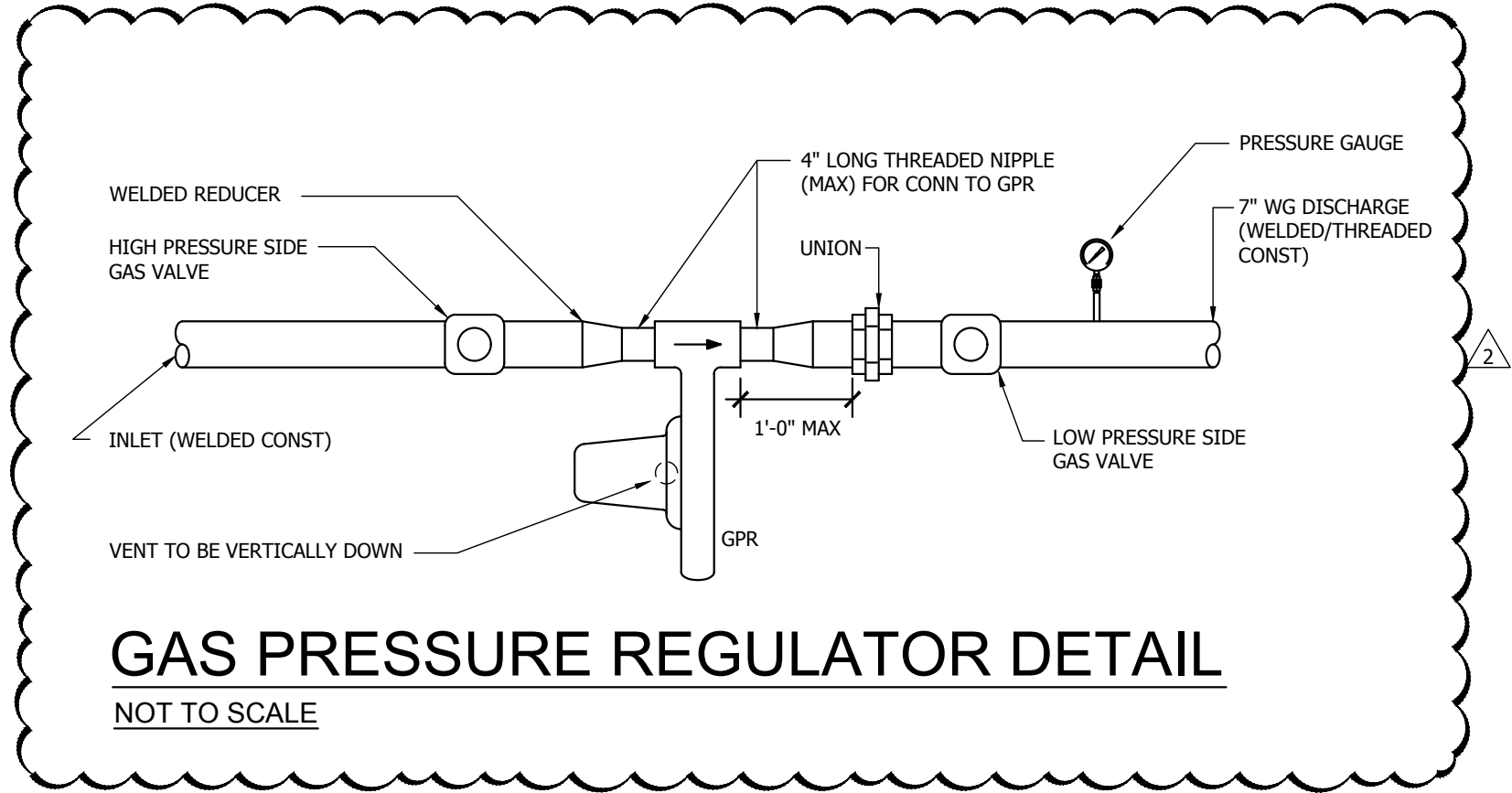
4.02 SHEET M-3.1 – MECHANICAL SCHEDULES:

- A. Delete Gas Pressure Regulator Schedule from this sheet. See sheet M-2.1 for revised schedule.

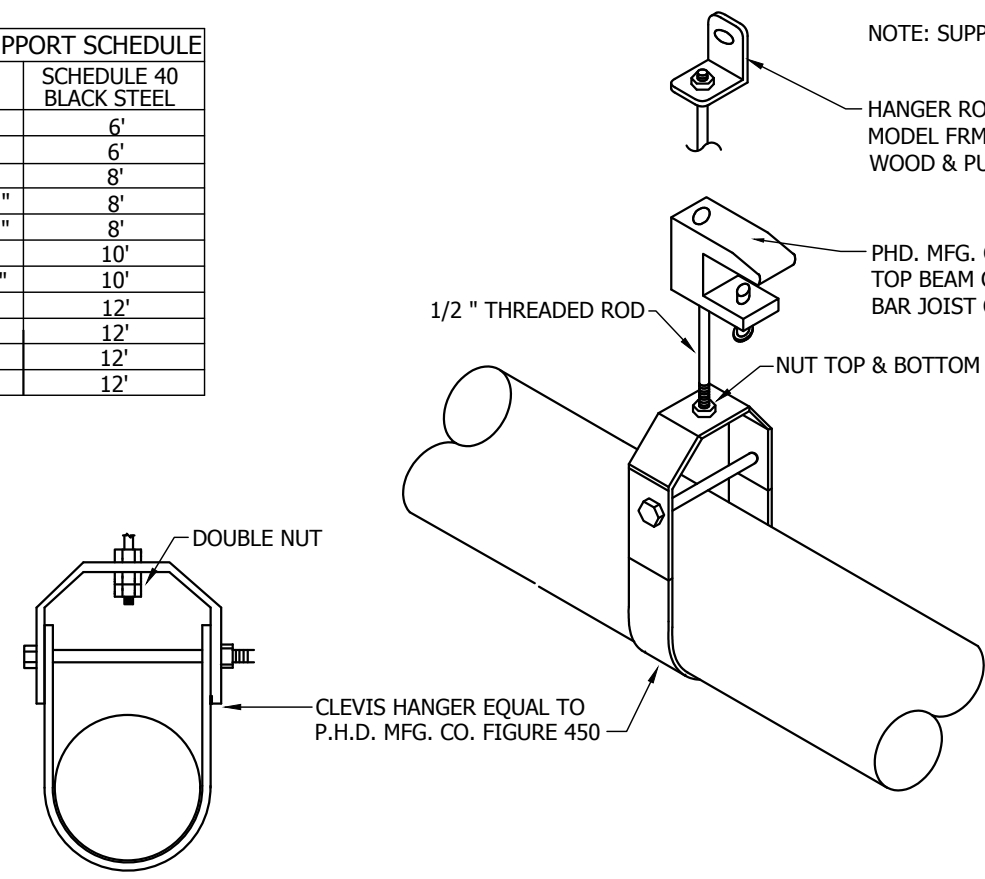
4.03 SHEET E-3.0 - FLOOR PLAN POWER & AUXILIARY:

- A. Clarification of item from previous Addendum 3 - For each space listed below, provide and install single gang box, flush mounted in accessible ceiling and one (1) CAT6 cable from box to nearest IT equipment rack for wireless access point. Terminate cable on both ends and label per specifications. Room 135, 135A, 135B, 135C, 113, 113A, 113B, 113C, 117, 117B, 132, 133, 134, 131, 119, and 120.

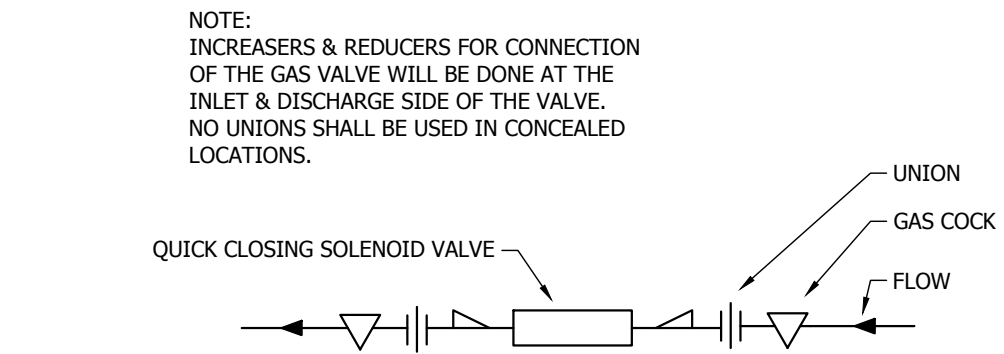
END OF ADDENDUM NUMBER 4



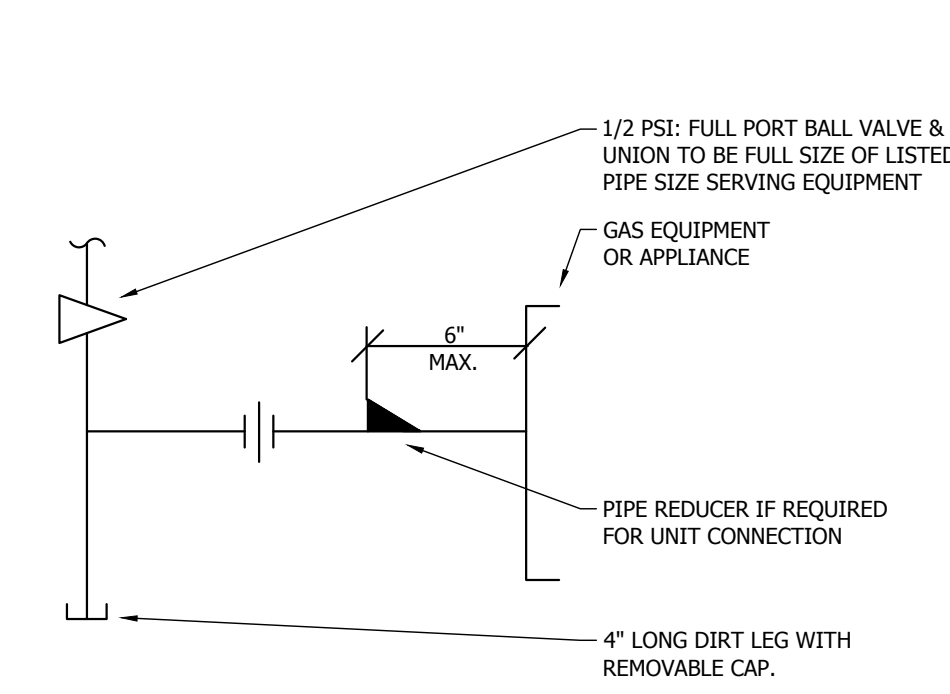
PIPE SIZE	SCHEDULE 40 BLACK STEEL
1/2"	6
3/4"	8
1"	8
1 1/4"	8
1 1/2"	10
2"	12
3"	12
4"	12
6"	12
8"	12



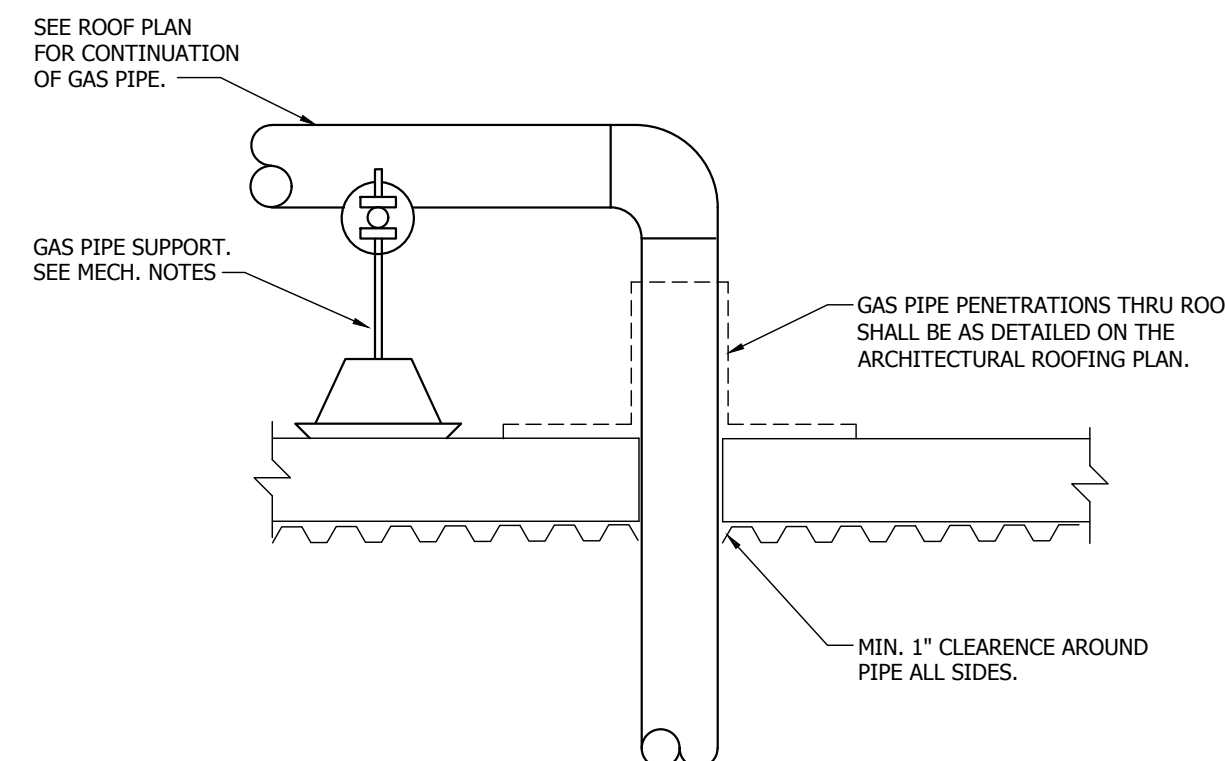
GAS PIPE HANGER DETAIL
NOT TO SCALE



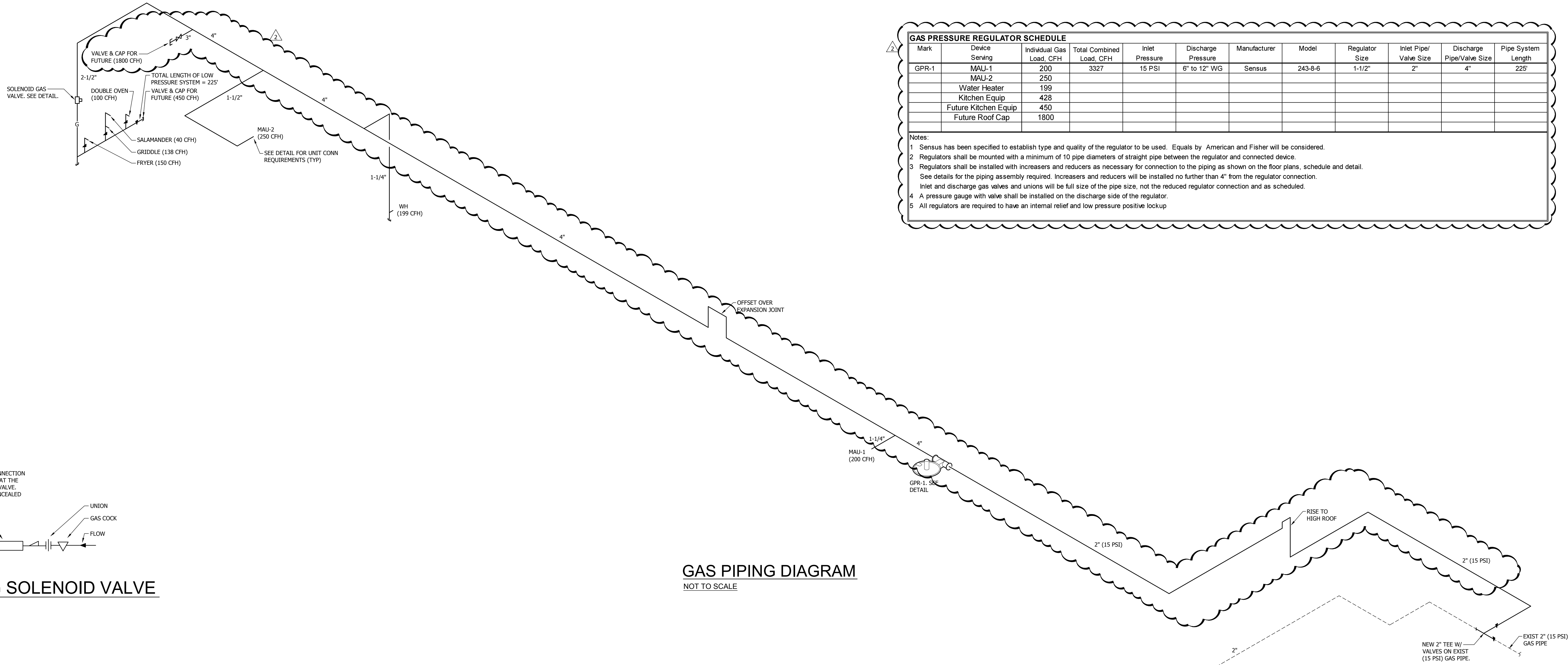
QUICK CLOSING SOLENOID VALVE
NOT TO SCALE



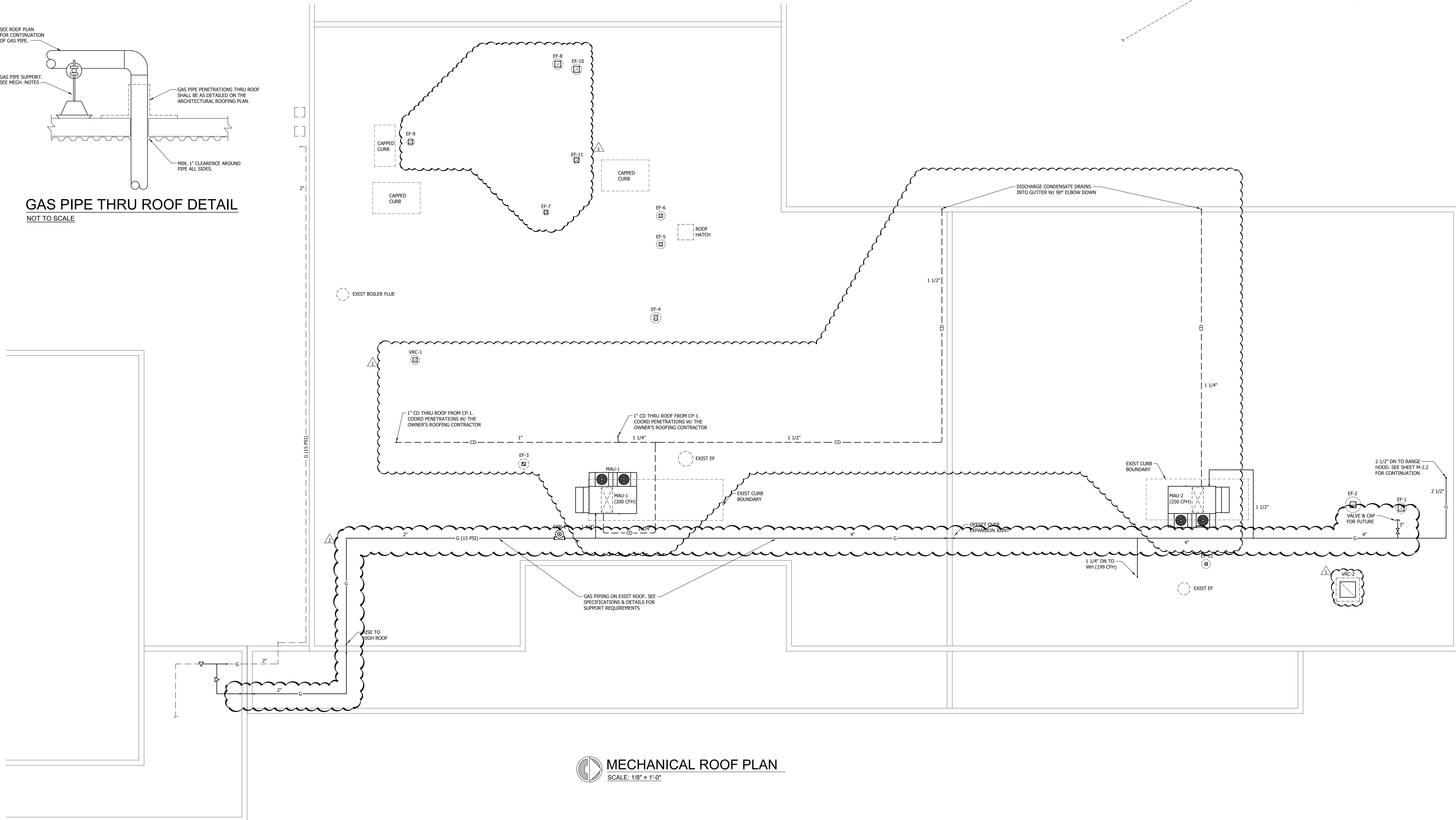
GAS EQUIPMENT/APPLIANCE UNIT CONNECTION DETAIL
NOT TO SCALE



GAS PIPE THRU ROOF DETAIL
NOT TO SCALE



GAS PIPING DIAGRAM
NOT TO SCALE



MECHANICAL ROOF PLAN
SCALE: 1/8" = 1'-0"

Mark	Device	Individual Gas Load, CFH	Total Combined Load, CFH	Inlet Pressure	Discharge Pressure	Manufacturer	Model	Regulator Size	Inlet Pipe Valve Size	Discharge Pipe Valve Size	Pipe System Length
GPR-1	MAU-1	200	3327	15 PSI	6" to 12" WG	Sensus	243-8-6	1-1/2"	2"	4"	225'
	MAU-2	250									
	Water Heater	199									
	Kitchen Equip	428									
	Future Kitchen Equip	450									
	Future Roof Cap	1800									

Notes:

- Sensus has been specified to establish type and quality of the regulator to be used. Equals by American and Fisher will be considered.
- Regulators shall be mounted with a minimum of 10 pipe diameters of straight pipe between the regulator and connected device.
- Regulators shall be installed with increasers and reducers as necessary for connection to the piping as shown on the floor plans, schedule and detail. See details for the piping assembly required. Increasers and reducers will be installed no further than 4" from the regulator connection. Inlet and discharge gas valves and unions will be full size of the pipe size, not the reduced regulator connection and as scheduled.
- A pressure gauge with valve shall be installed on the discharge side of the regulator.
- All regulators are required to have an internal relief and low pressure positive lockup.



NOLA VANPEURSEM
ARCHITECTS, PC
MEMBERS OF THE AMERICAN INSTITUTE OF ARCHITECTS
301 JEFFERSON STREET
HUNTSVILLE, ALABAMA 35891
(256) 588-8877
NYPARCHITECTS.COM

THIS DRAWING MAY NOT BE REPRODUCED IN WHOLE OR IN PART WITHOUT THE CONSENT OF NOLA VANPEURSEM ARCHITECTS

DECATUR CITY SCHOOLS
AUSTIN HIGH SCHOOL
CAREER TECH CENTER
DECATUR, ALABAMA

JOB NUMBER
17922

ZWW/JSB / JRM / 04-25-2018
DRAWN - CHECKED - DATE

REVISIONS
AD-1 05-14-2018
AD-4 05-25-2018

SHEET TITLE

MECHANICAL
ROOF PLAN

SHEET NUMBER

M-2.1
OF
7