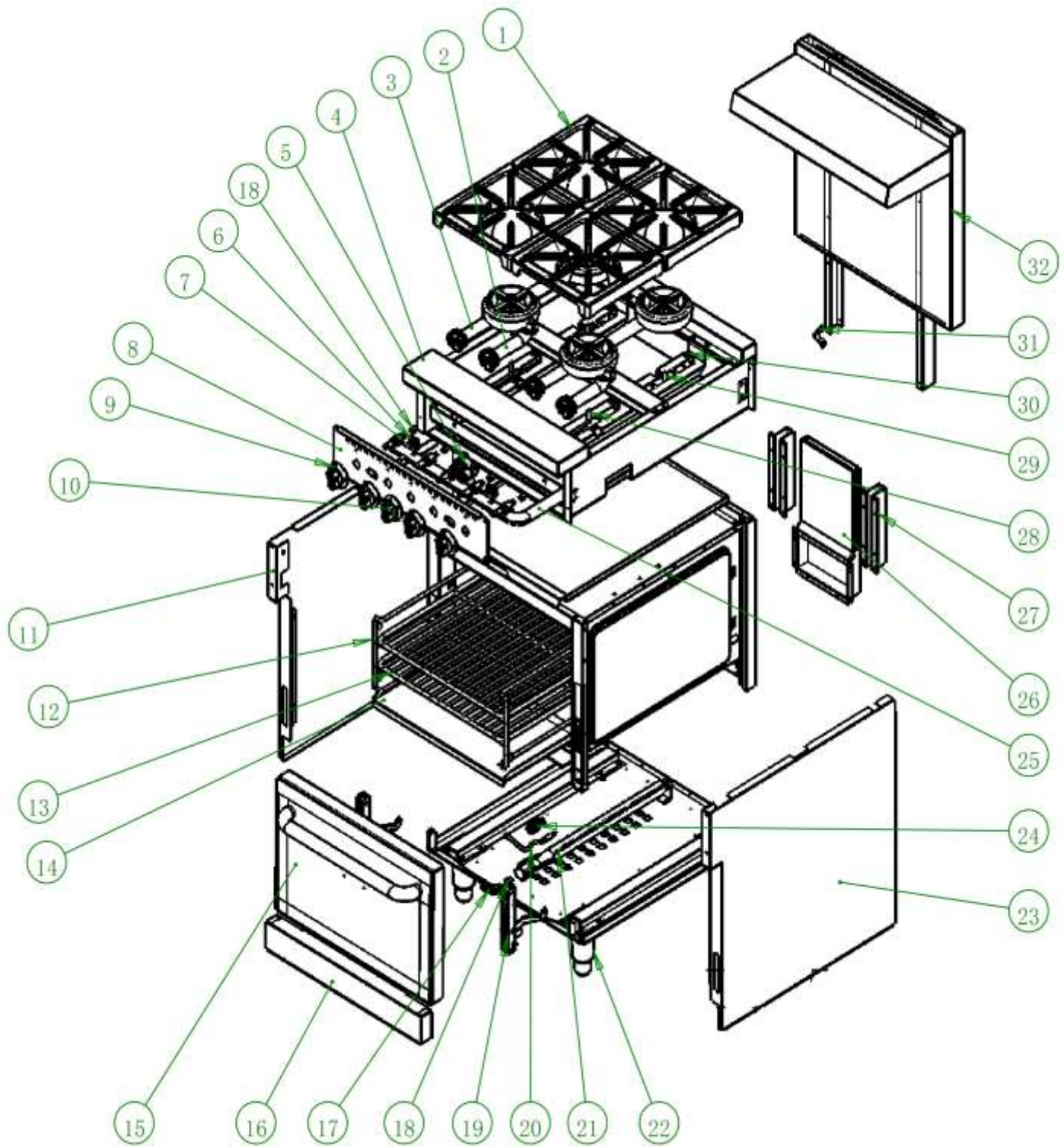




PARTS LIST FOR GAS RANGES



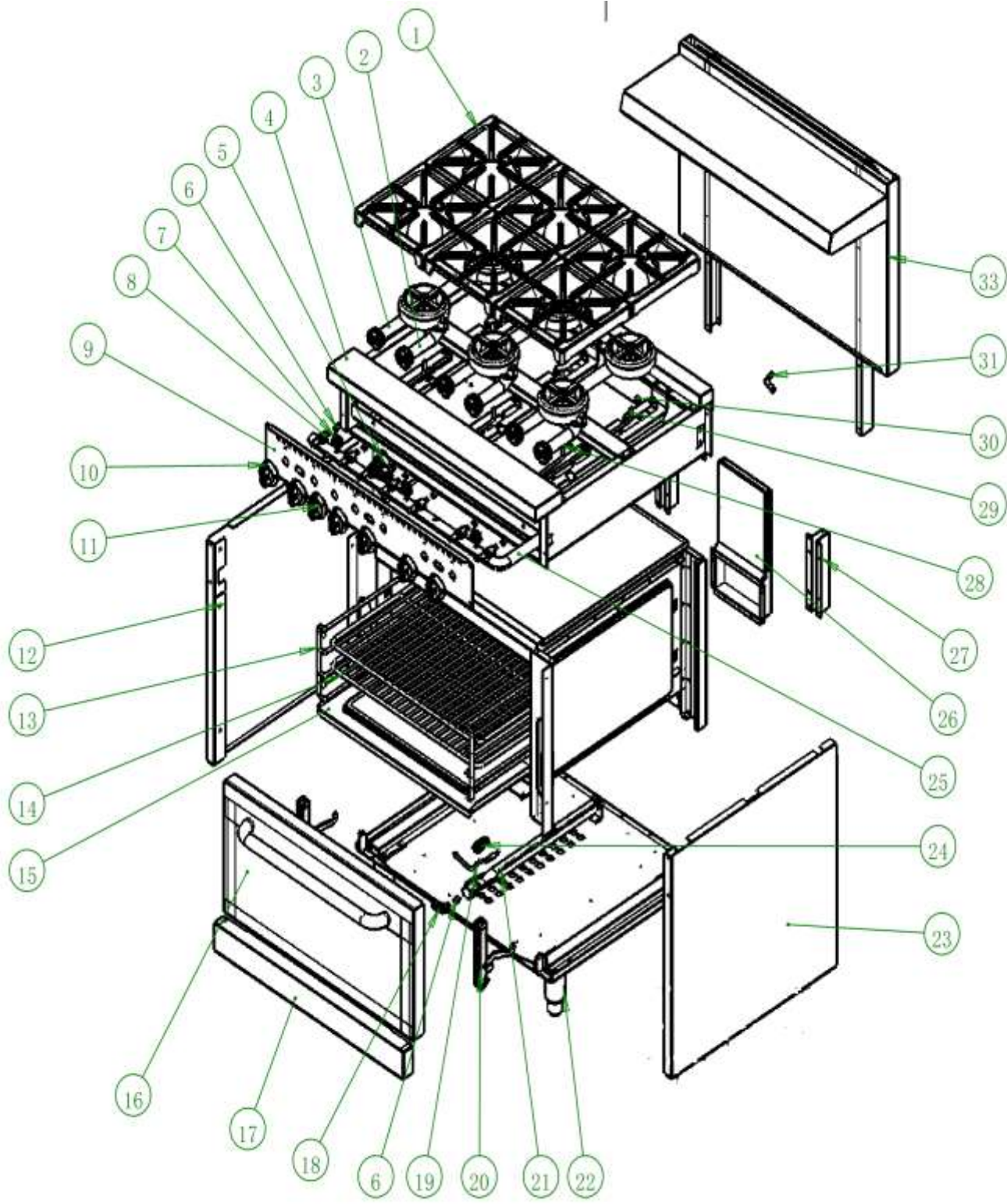
MODELS R4, R6, R10



MODEL R4, 24" WIDE GAS RANGE

REF #	PART #	DESCRIPTION	QTY
1	GR10021	BURNER GRATE	4
2	GR10032	BURNER ASSEMBLY FRONT (SHORT)	2
3	GR10031	BURNER ASSEMBLY REAR (LONG)	2
4	N/A		
5	GR10020	OVEN THERMOSTATSAFETY VALVE	1
6	GR10018	PILOT ADJUSTMENT VALVE	2
7	GR10087	TOP BURNER GAS VALVE (NAT)	4
	GR10082	OVEN/TOP BURNER ORIFICE #36 DMS (NAT)	4
	GR10083	OVEN/TOP BURNER ORIFICE #50 DMS (LP)	*
8	GR10073	FRONT CONTROL PANEL	1
9	GR10069	TOP BURNER GAS VALVE KNOB	4
10	GR10070	OVEN THERMOSTAT KNOB	1
11	N/A		
12	GR10005	RACK SUPPORT LEFT/RIGHT	2
13	GR10004.5	OVEN RACK	2
14	N/A		
15	GR10089	OVEN DOOR ASSEMBLY	1
16	N/A		
17	GR10009	ORIFICE ELBOW	1
18	GR10082	OVEN ORIFICE #36 DMS (NAT)	1
	GR10084	OVEN ORIFICE #51 DMS (LP)	*
19	GR10013	DOOR HINGE ASSY (RIGHT)	1
	GR10012	DOOR HINGE ASSY (LEFT)	1
20	GR10075	THERMOCOUPLE	1
21	GR10008	OVEN TUBE BURNER	1
22	GR10003	6" ADJUSTABLE LEG (USED PRIOR TO 11/15)	4
	GR1003.1	6" ADJUSTABLE LEG (USED AFTER 11/15)	4
	GR10085	SWIVEL CASTER W/BRAKE (FRONT)	*2*
	GR10086	SWIVEL CASTER W/O BRAKE (REAR)	*2*
23	N/A		
24	GR10007	OVEN PILOT (NAT)	1
	GR10092	OVEN PILOT (LP)	*
25	N/A		
26	GR10028	INNER FLUE ASSEMBLY	1
27	GR10066	SLIDE RAIL (REAR BAFFLE)	2
28	GR10034	PILOT TUBING (SHORT BURNER)	2
29	GR10035	PILOT TUBING (LONG BURNER)	2
30	GC10003	TOP PILOT BUNER	4
31	GR10001	MANIFOLD SUPPORT BRACKET	1
32	GR10078	BACK PANEL ASSEMBLY	1
	GC10015	GAS PRESSURE REG 3/4"NPT LP&NAT	1
	GR10080	CRUMB TRAY	1

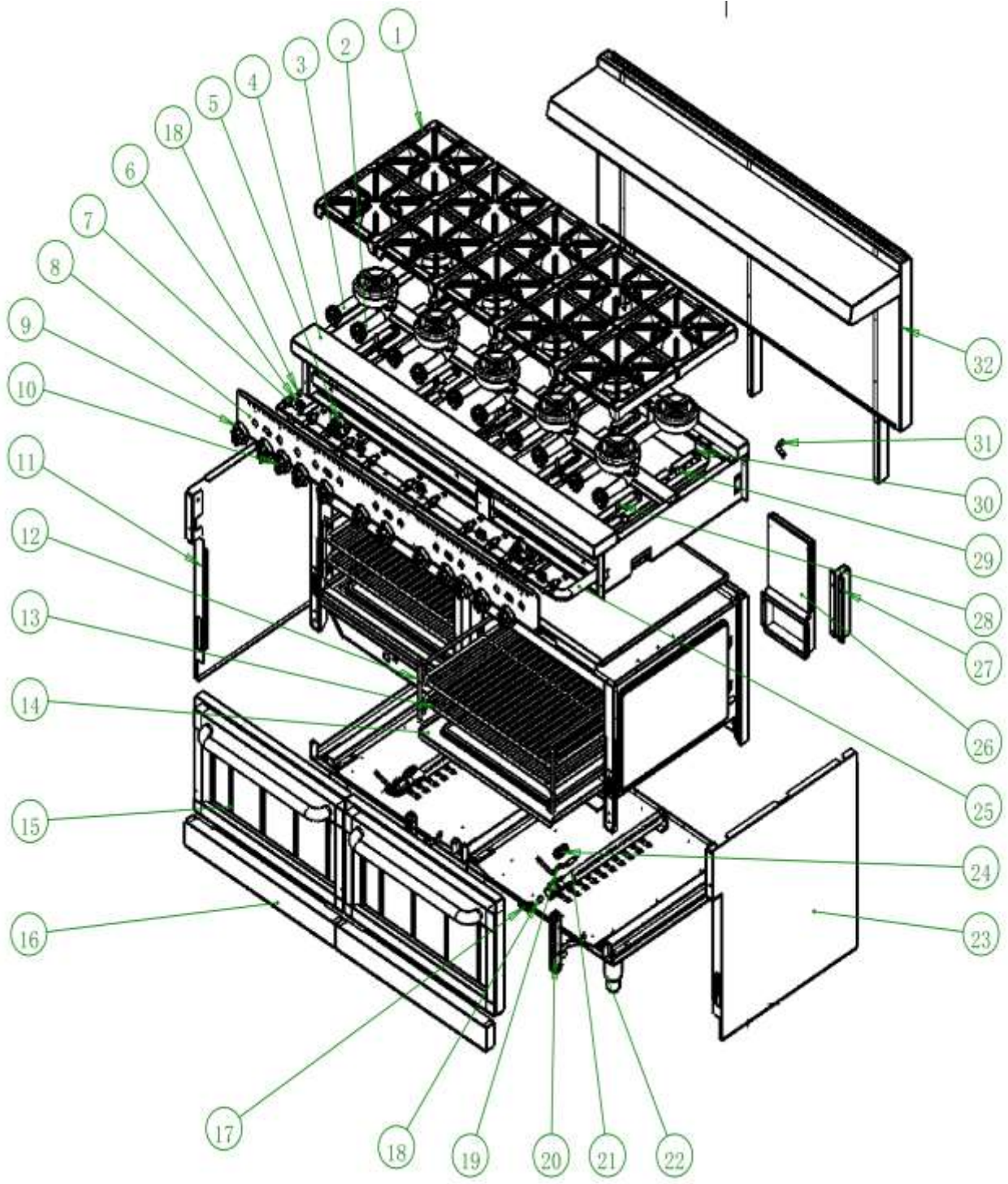
N/A - NOT AVAILABLE



MODEL R6, 36" WIDE GAS RANGE

REF #	PART #	DESCRIPTION	QTY
1	GR10021	BURNER GRATE	6
2	GR10032	BURNER ASSEMBLY FRONT (SHORT)	3
3	GR10031	BURNER ASSEMBLY REAR (LONG)	3
4	GR10023	FRAME ASSEMBLY	1
5	GR10020	OVEN THERMOSTAT\SAFETY VALVE	1
6	GR10082	OVEN/TOP BURNER ORIFICE #36 DMS (NAT)	6
6	GR10083	OVEN/TOP BURNER ORIFICE #50 DMS (LP)	*
7	GR10018	PILOT ADJUSTMENT VALVE	3
8	GR10087	TOP BURNER GAS VALVE (NAT)	6
9	GR10036	FRONT CONTROL PANEL	1
10	GR10069	TOP BURNER GAS VALVE KNOB	6
11	GR10070	OVEN THERMOSTAT KNOB	1
12	GR10056	SIDE PANEL (LEFT)	1
13	GR10005	RACK SUPPORT LEFT/RIGHT	2
14	GR10004	OVEN RACK (25" X 24")	2
15	N/A		
16	GR10088	DOOR ASSEMBLY	1
17	GR10091	LOWER FRONT PANEL	1
18	GR10009	ORIFICE ELBOW	1
19	GR10075	THERMOCOUPLE	1
20	GR10013	DOOR HINGE ASSY (RIGHT)	1
20	GR10012	DOOR HINGE ASSY (LEFT)	1
21	GR10008	OVEN TUBE BURNER	1
21	GR10082	OVEN ORIFICE #36 DMS (NAT)	1
21	GR10084	OVEN ORIFICE #51 DMS (LP)	*
22	GR10003	6" ADJUSTABLE LEG (USED PRIOR TO 11/15)	4
	GR1003.1	6" ADJUSTABLE LEG (USED AFTER 11/15)	4
22	GR10085	SWIVEL CASTER W/BRAKE (FRONT)	*2*
22	GR10086	SWIVEL CASTER W/O BRAKE (REAR)	*2*
23	GR10055	SIDE PANEL (HOUSING)(RIGHT)	1
24	GR10007	OVEN PILOT (NAT)	1
24	GR10092	OVEN PILOT (LP)	*
25	GR10011	GAS INLET PIPE ASSEMBLY	1
26	GR10028	INNER FLUE ASSEMBLY	1
27	GR10066	SLIDE RAIL (REAR BAFFLE)	2
28	GR10034	PILOT TUBING (SHORT BURNER)	3
29	GR10035	PILOT TUBING (LONG BURNER)	3
30	GC10003	TOP PILOT BUNER	6
31	GR10001	MANIFOLD SUPPORT BRACKET	1
33	GR10027	BACK PANEL ASSEMBLY	1
	GC10015	GAS PRESSURE REG 3/4"NPT LP&NAT	1
	GR10024	CRUMB TRAY	1

N/A - NOT AVAILABLE



MODEL R10, 60" WIDE GAS RANGE

REF #	PART #	DESCRIPTION	QTY
1	GR10021	BURNER GRATE	10
2	GR10032	BURNER ASSEMBLY FRONT (SHORT)	5
3	GR10031	BURNER ASSEMBLY REAR (LONG)	5
4	N/A		
5	GR10020	OVEN THERMOSTATSAFETY VALVE	2
6	GR10018	PILOT ADJUSTMENT VALVE	5
7	GR10087	TOP BURNER GAS VALVE (NAT)	10
	GR10082	TOP/OVEN ORIFICE #36 DMS (NAT)	*
	GR10083	TOP BURNER ORIFICE #50 DMS (LP)	*
8	GR10074	FRONT CONTROL PANEL (R10)	1
9	GR10069	TOP BURNER GAS VALVE KNOB	10
10	GR10070	OVEN THERMOSTAT KNOB	2
11	N/A	SIDE PANEL (Left)	1
12	GR10005	RACK SUPPORT LEFT/RIGHT	4
13	GR10004	OVEN RACK (25" X 24")	4
14	GR10072	BASEBOARD (CHAMBER)	2
15	GR10090	DOOR ASSEMBLY	2
16	GR10093	LOWER FRONT PANEL (R10)	2
17	GR10009	ORIFICE ELBOW	2
18	GR10082	TOP/OVEN ORIFICE #36 DMS (NAT)	2
18	GR10084	OVEN ORIFICE #51 DMS (LP)	*
19	GR10075	THERMOCOUPLE	2
20	GR10013	DOOR HINGE ASSY (RIGHT)	2
20	GR10012	DOOR HINGE ASSY (LEFT)	2
21	GR10008	OVEN TUBE BURNER	2
	GR10082	TOP/OVEN ORIFICE #36 DMS (NAT)	2
	GR10084	OVEN ORIFICE #51 DMS (LP)	*
22	GR10003	6" ADJUSTABLE LEG (USED PRIOR TO 11/1	6
	GR10003.1	6" ADJUSTABLE LEG (USED APFER TO 11/	6
22	GR10085	SWIVEL CASTER W/BRAKE (FRONT)	*2*
22	GR10086	SWIVEL CASTER W/O BRAKE (REAR)	*2*
23	N/A	SIDE PANEL(Right)	1
24	GR10007	OVEN PILOT (NAT)	1
24	GR10092	OVEN PILOT (LP)	*
25	N/A	GAS INLET PIPE ASSEMBLY	1
26	GR10028	INNER FLUE ASSEMBLY	2
27	GR10066	SLIDE RAIL (REAR BAFFLE)	2
28	GR10034	PILOT TUBING (SHORT BURNER)	5
29	GR10035	PILOT TUBING (LONG BURNER)	5
30	GC10003	TOP PILOT BUNER	10
31	GR10001	MANIFOLD SUPPORT BRACKET	1
32	GR10079	FRONT PANEL (BACK) - HIGH SHELF 60"	1
	GC10015	GAS PRESSURE REG 3/4"NPT LP&NAT	1
	GR10094	CRUMB TRAY LEFT	1
	GR10080	CRUMB TRAY RIGHT	1

N/A - NOT AVAILABLE



Contact Info: 704-900-2068

Website: <http://www.entree.biz>