

# Orthophosphate Test Kit

30 or 60 ppm

**TK9930-Z**  
white caps

## KIT COMPONENTS:

MO1460-B	Molybdate Reagent, 60 mL
SC7555-H	Stannous Chloride Powder, 10g
TU-2000-T	Tube, Phosphate w/ Stopper
FN-6050-P	Funnel, 50mm
FP-0610-9	Filter Paper, #610, 9cm
BR-2400	Brush, Test Tube
9025	Orthophosphate Comparator, 30 & 60 ppm

## SAFETY TIPS:



Wear  
Gloves



Use Eye  
Protection



Read  
SDS

## TESTING TIPS:



Collect  
Accurate  
Sample



Hold  
Bottles  
Vertically



Ensure  
Proper  
Lighting

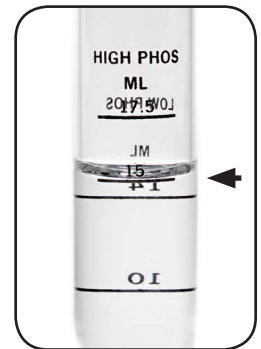
**INTERFERENCES:** As little as 0.5 ppm Fluoride and 1 ppm Orthophosphate will cause interference. Even low concentrations of Iron and Sulfate will cause interference.

**ATTENTION:** As necessary, calibrate this kit against a known standard made with plant / make-up water. Be sure to collect a representative sample.

**1** Rinse test tube three times with sample to be tested. **Fill test tube to 5 mL.** Filter sample if needed.



**2** Add Molybdate Reagent (MO1460) to the 15 mL line. Stopper and mix. Remove stopper from tube.



**3** Add 2 scoops of Stannous Chloride Powder (SC7555). Stopper and mix.

**Wait at least one minute for color to develop.**



**4** Place test tube in comparator and match color to a color standard. Record as ppm Orthophosphate.

